

Rolesville Comprehensive Transportation Plan

January 21, 2020



Kimley»Horn

What is a CTP?

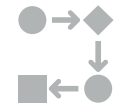
A Community Transportation Plan:



Helps establish a **vision** for transportation in Rolesville



Identifies **needs and deficiencies**



Recommends specific **projects and strategies**



Creates an **action plan** for implementation



Provides information to **secure project funding, coordinate with future development, and shape policy and program decisions.**

In the absence of local planning, someone else will make decisions for you.

Objectives of the Plan

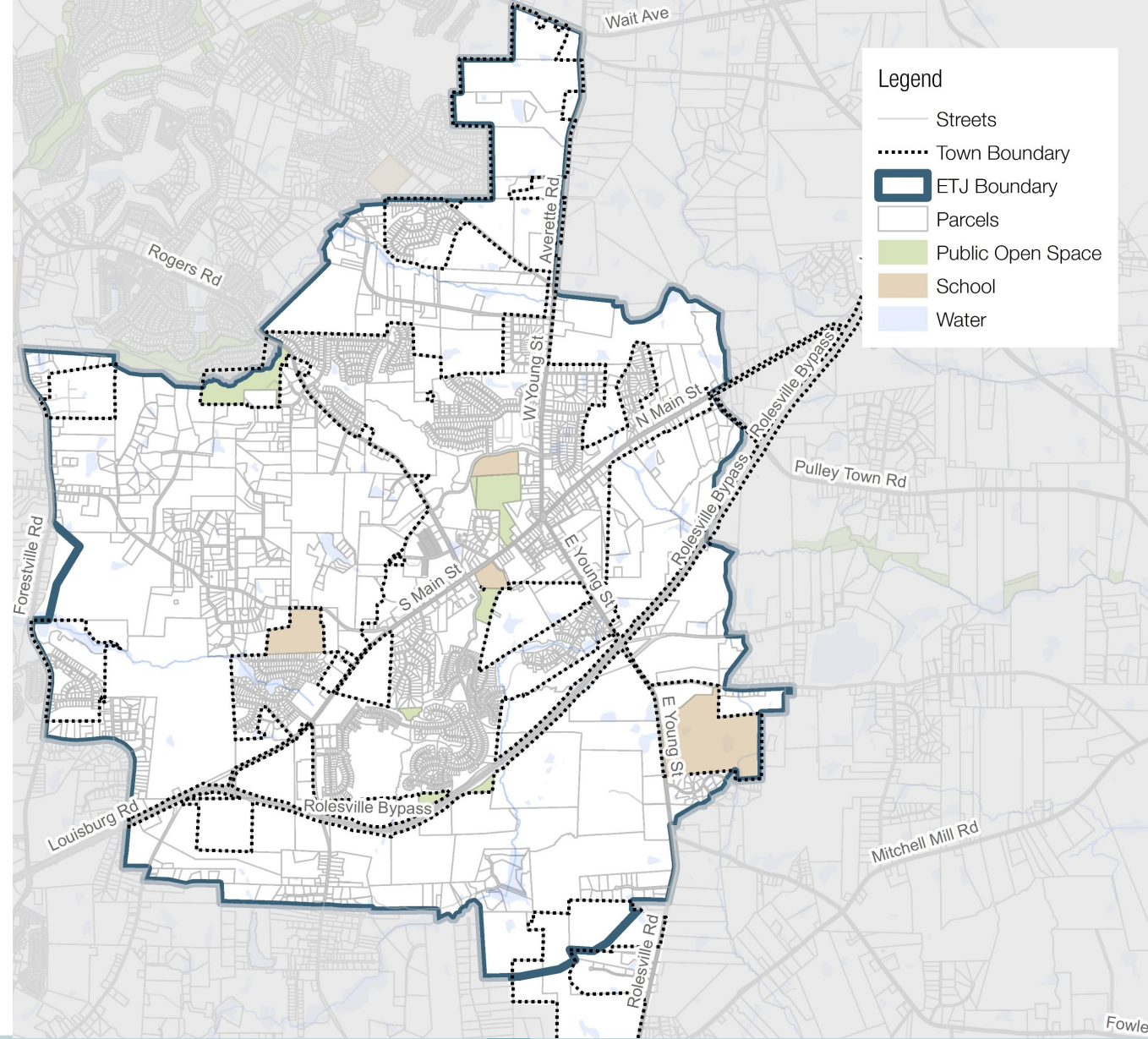
Update Previous Planning Efforts

Plan for 2045

Recommend Improvements

- roadways
- transit service
- sidewalks
- bicycle facilities

Study Area

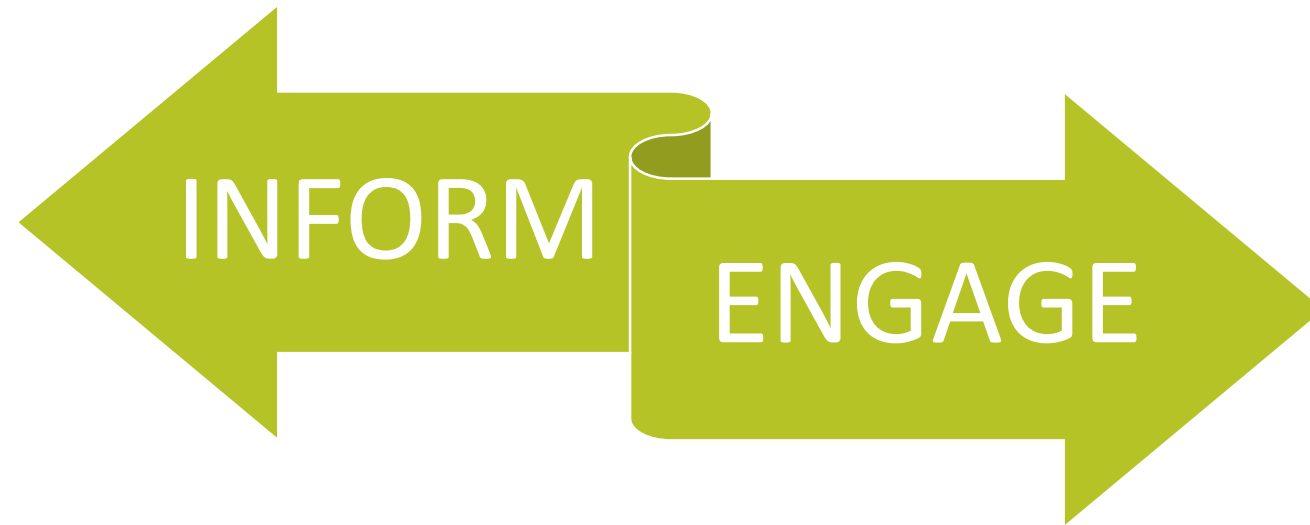


Planning Partners



Kimley»Horn

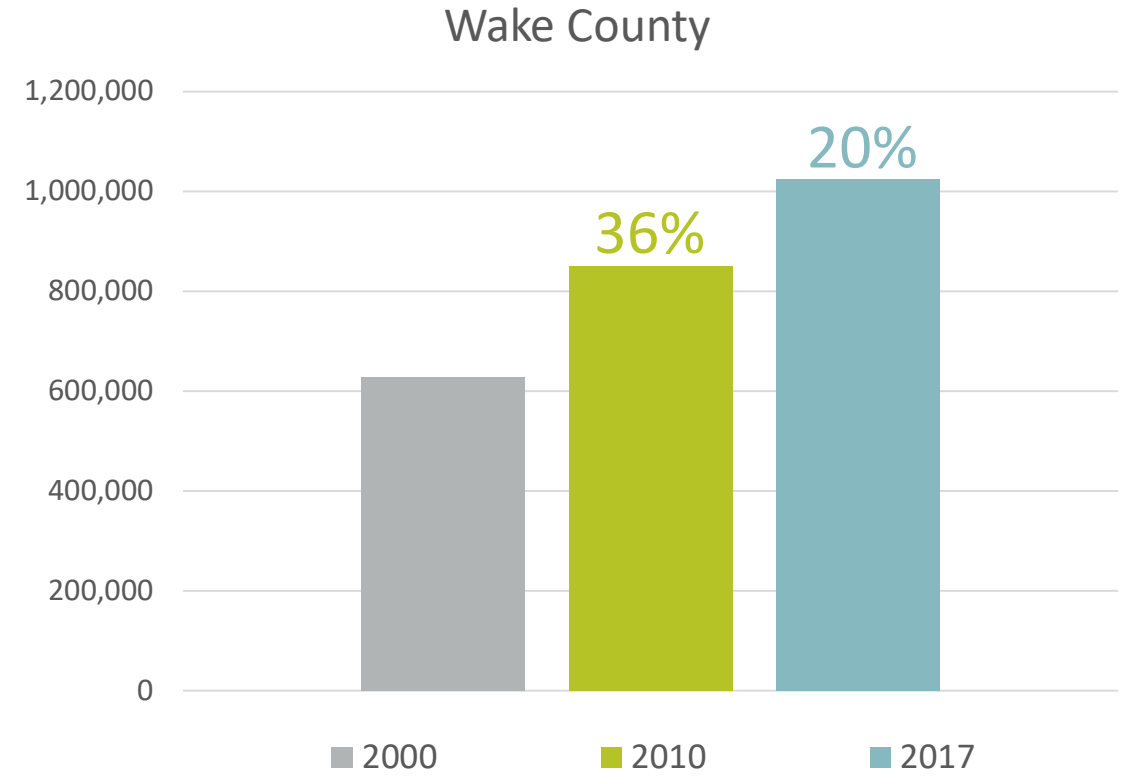
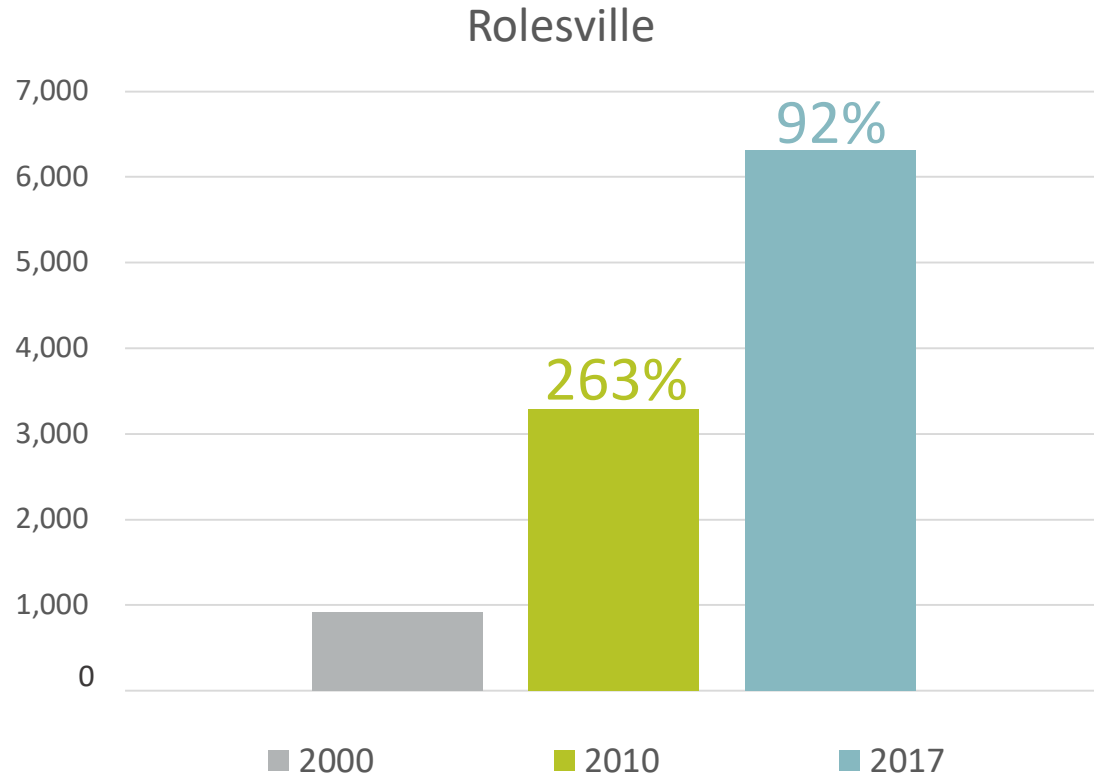
Public Engagement Philosophy



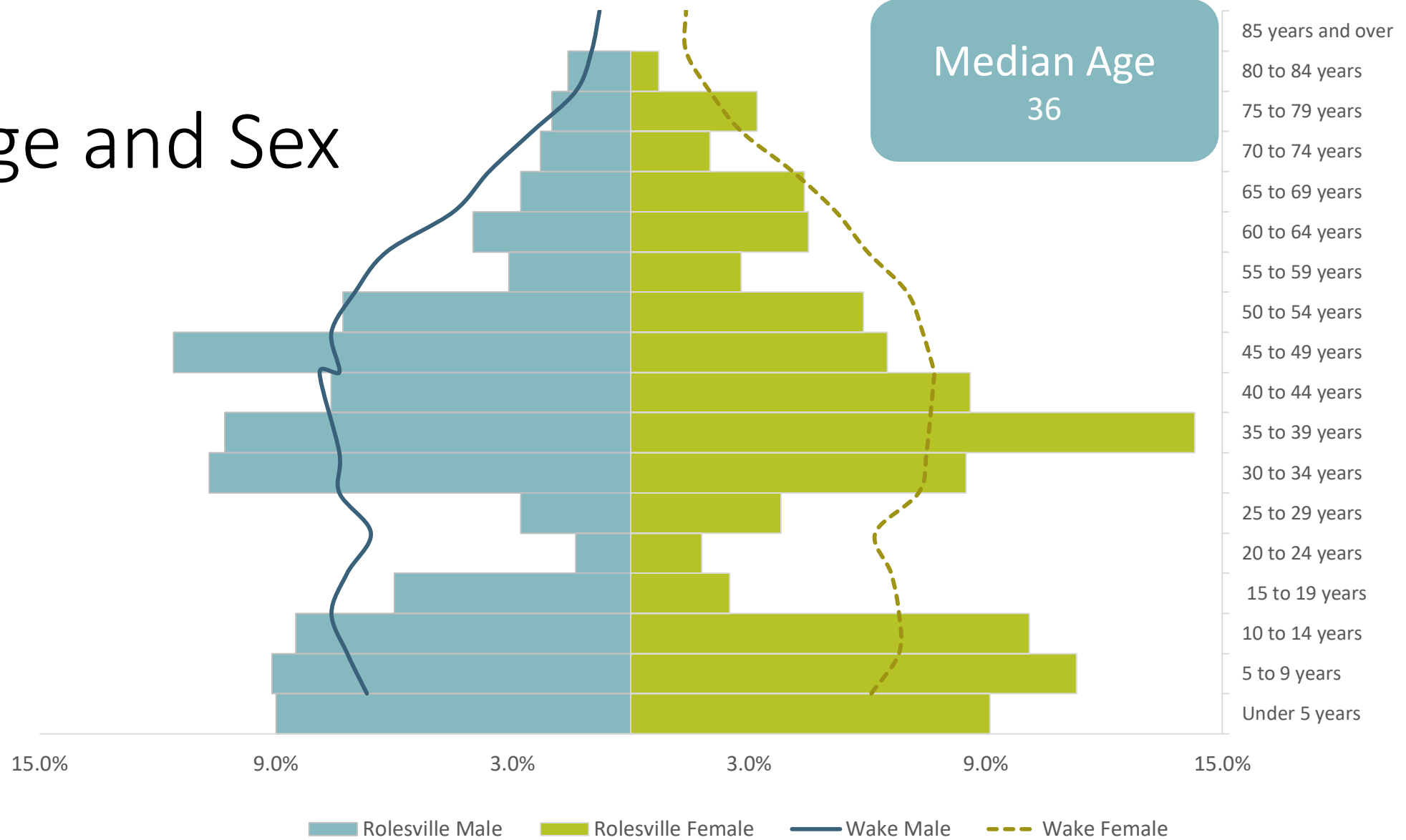
Public Engagement Strategies

- Planning Board and Town Council meetings and work sessions
- Community event outreach
- Stakeholder group meetings
- Social media activity
- Town website updates
- Plan update presentation
- Open house meetings
- Online survey tool

Population Growth



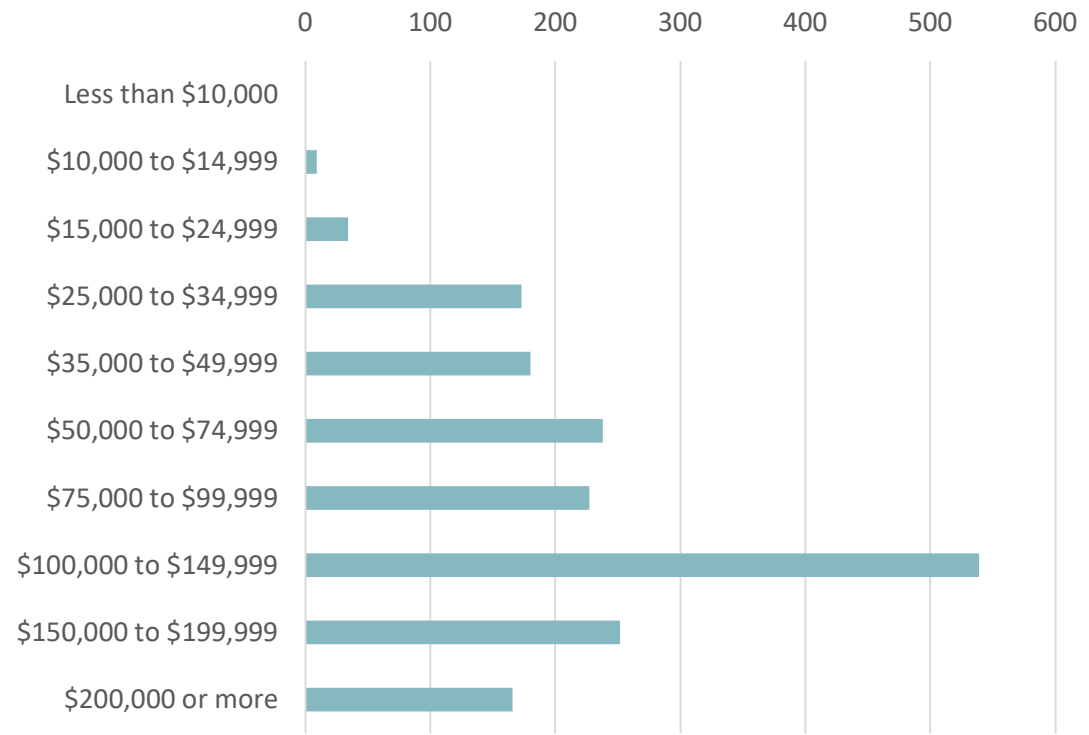
Age and Sex



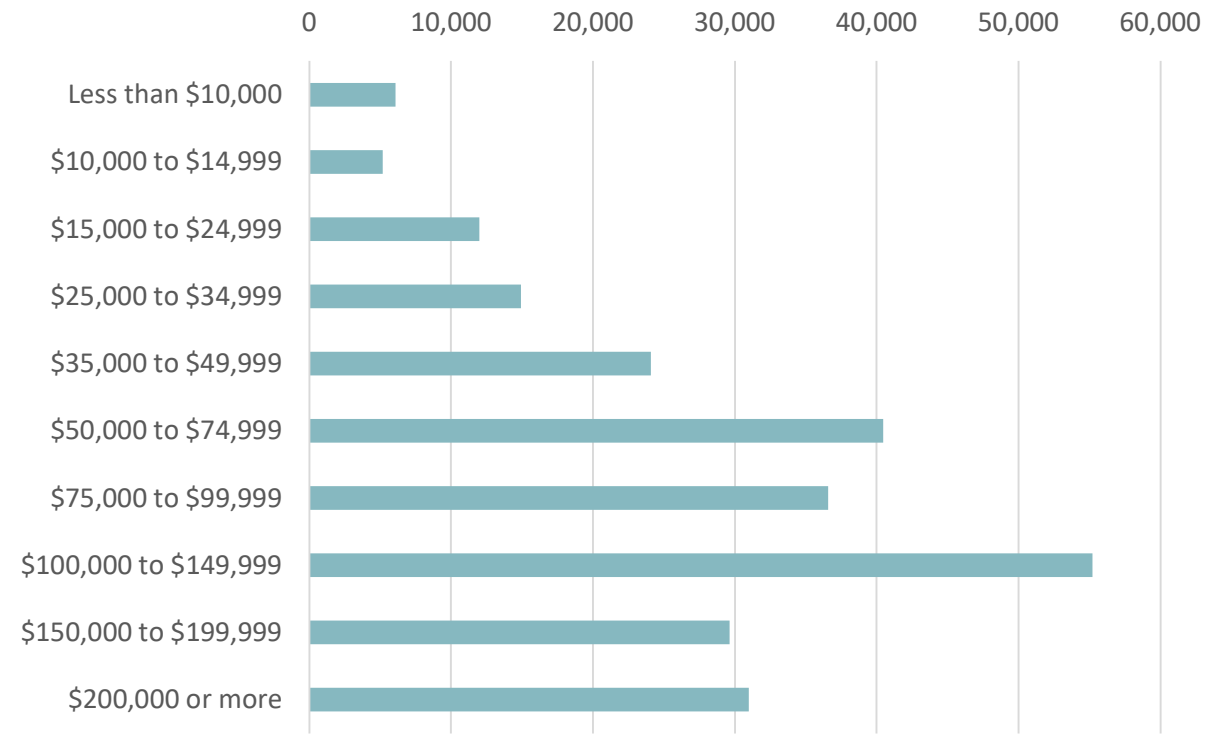
Income

Median Income
Rolesville \$96,384
Wake County \$73,577

Rolesville

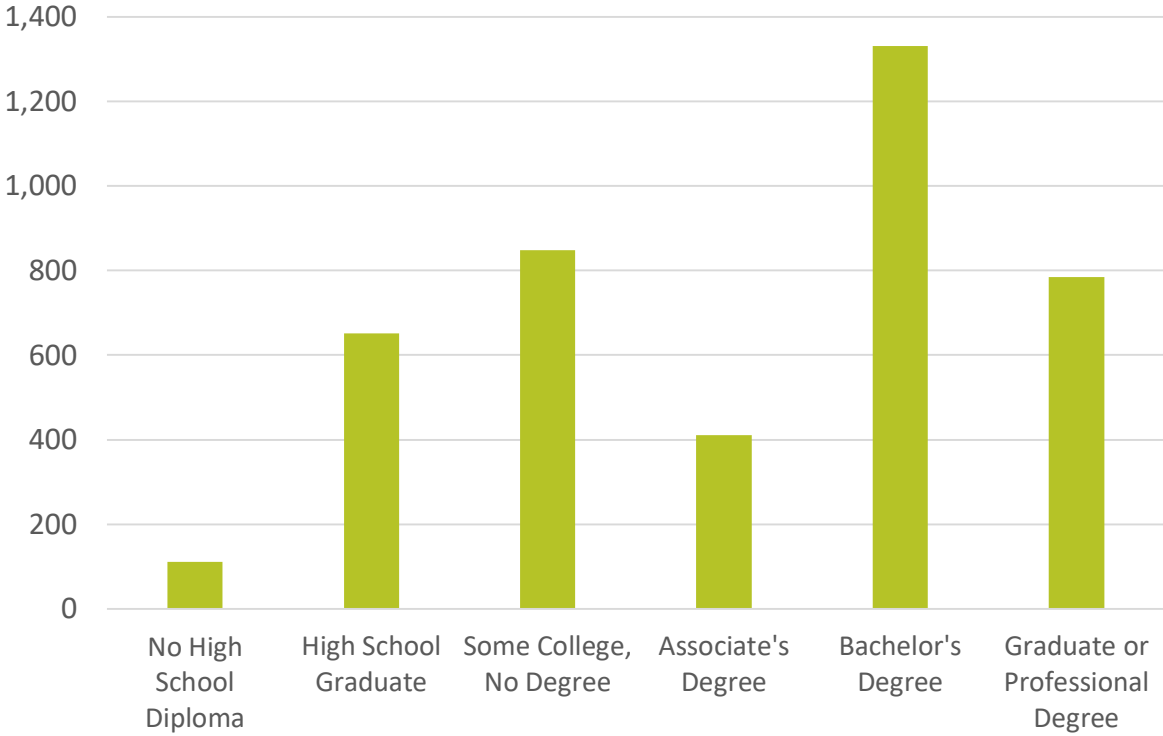


Wake County

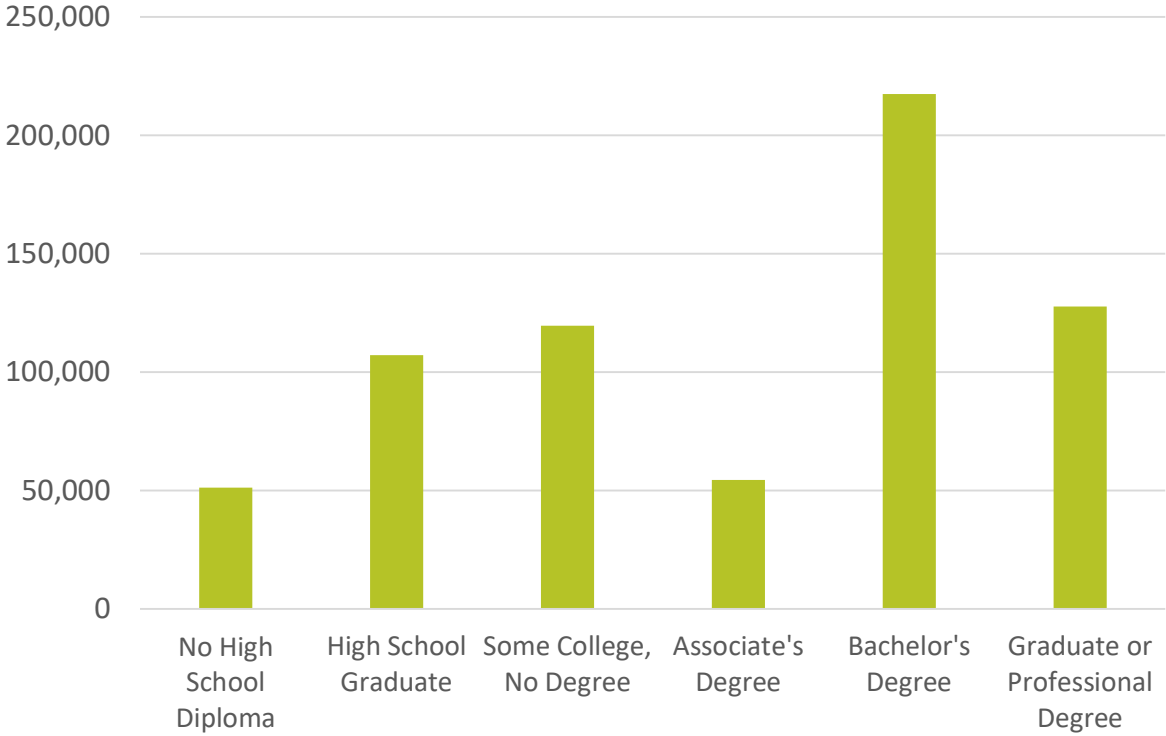


Education

Rolesville



Wake County

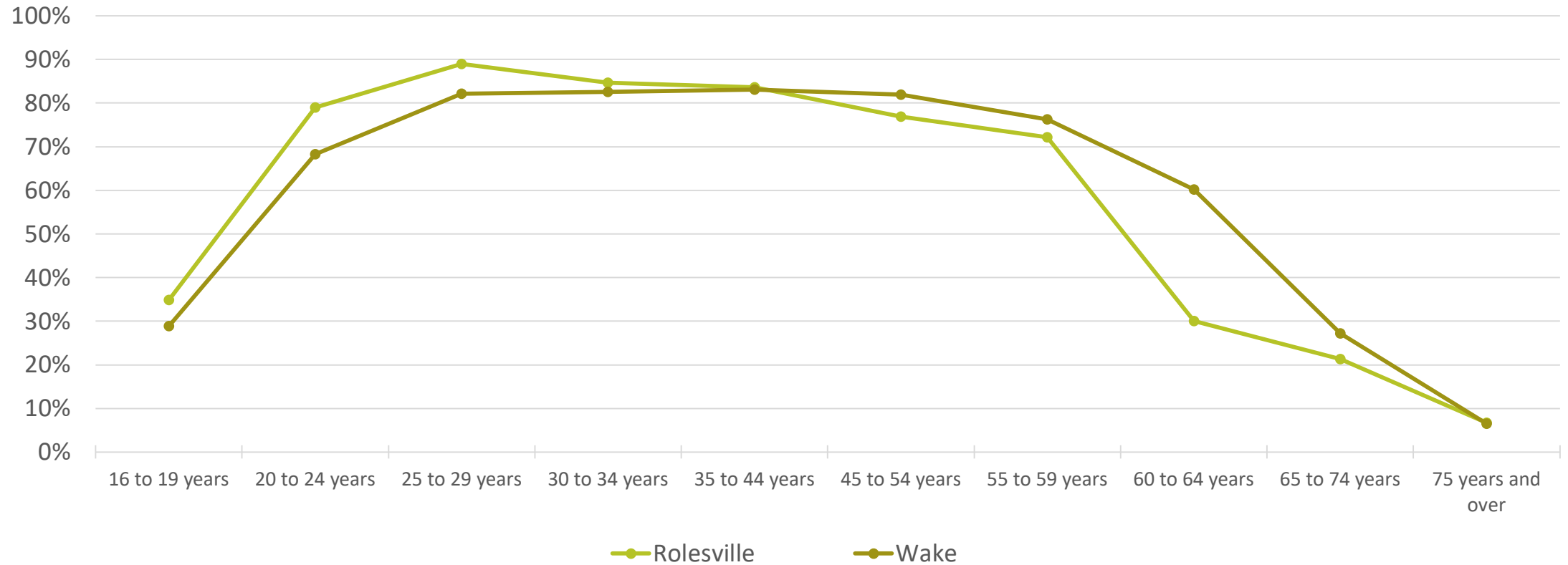


Employment

Unemployment Rate

Rolesville 10.6%

Wake County 4.9%



Transportation Considerations



Vehicles Available

No vehicle available 0%

One vehicle available 3%

Two vehicles available 67%

Three or more available 30%



30.5 minutes, average commute time

Mode Split

Walk



0%

Bicycle



0%

Drive Alone



87.3%

Carpool

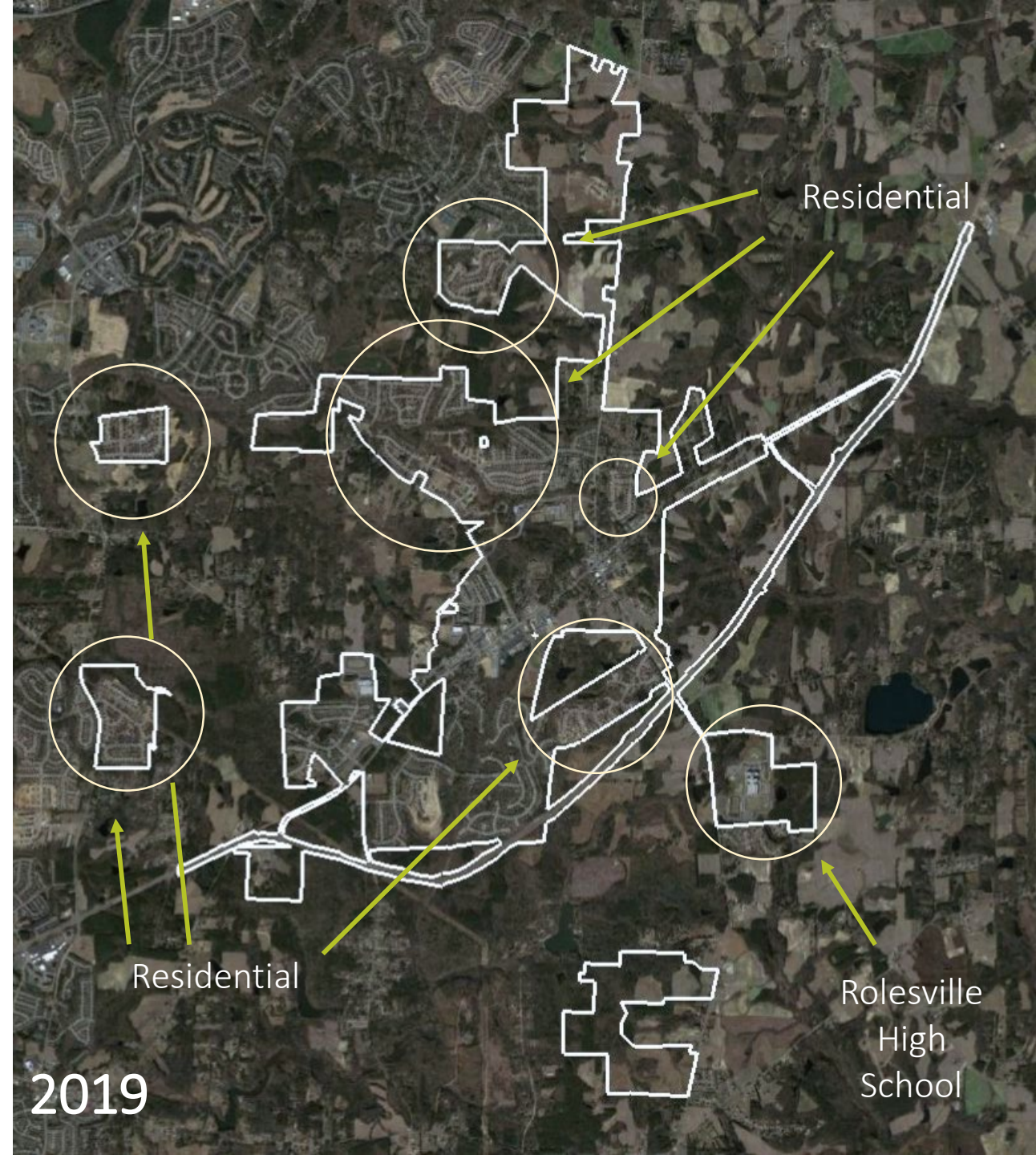
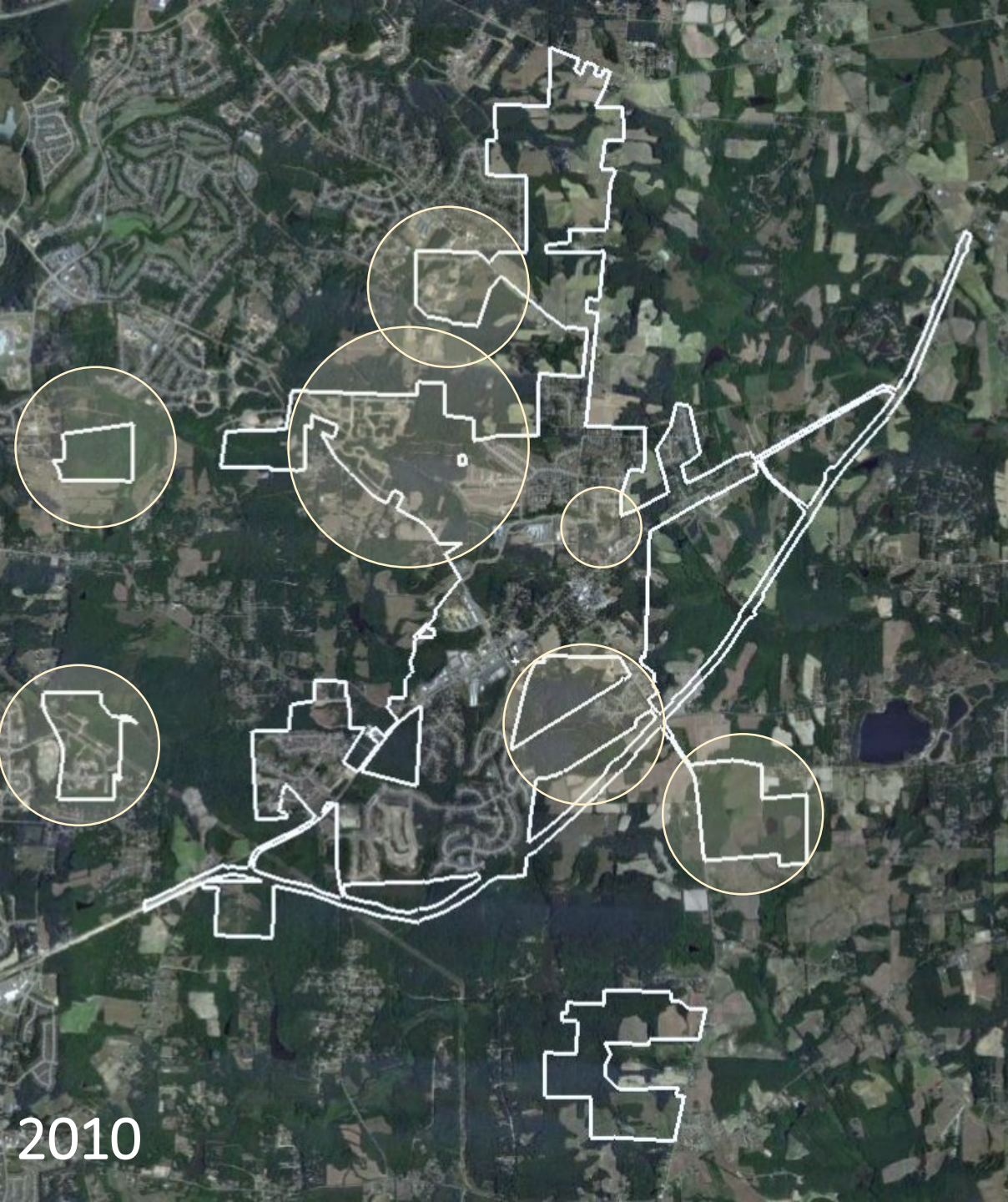


7.7%

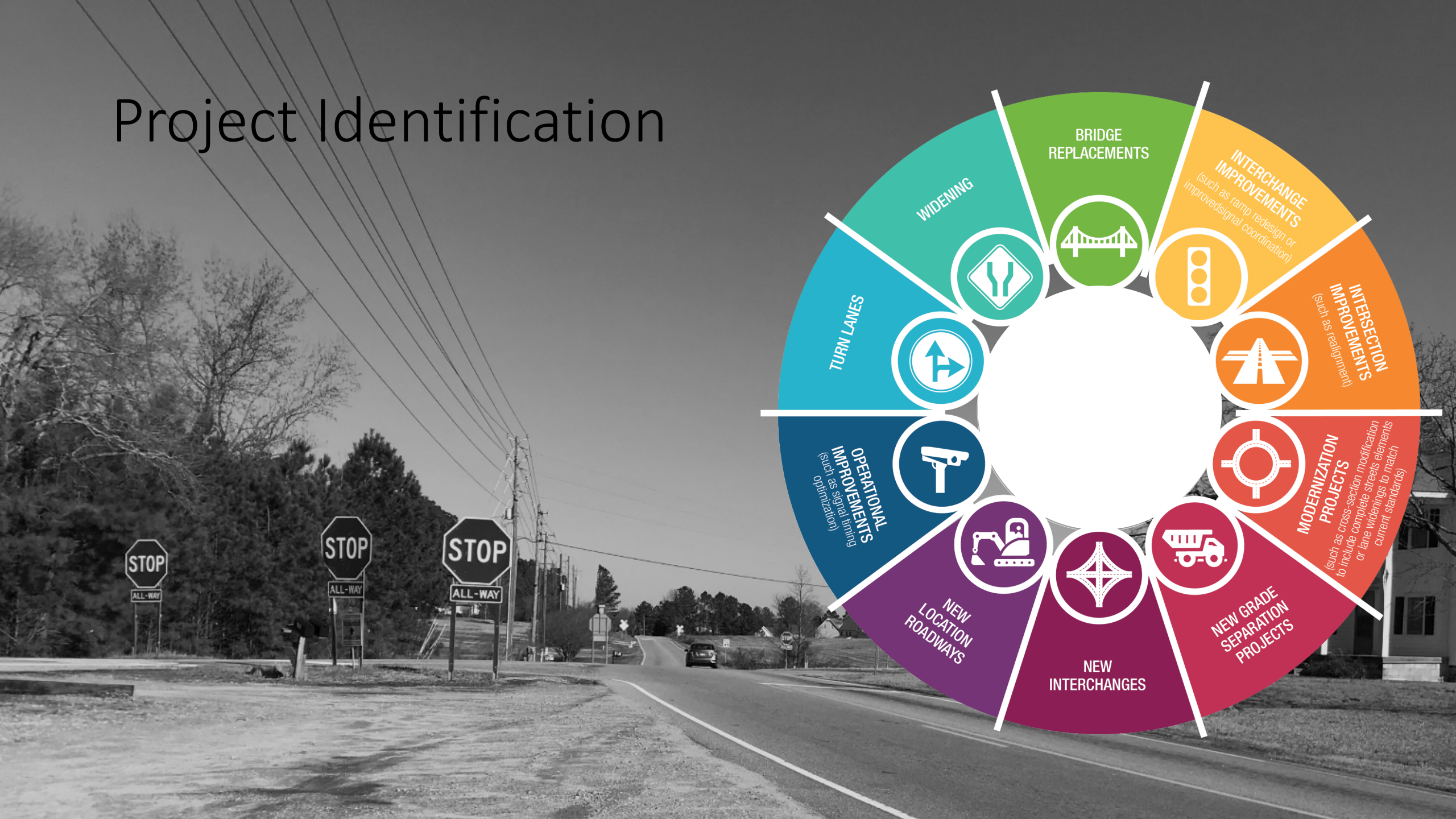
LAPP Projects

- Burlington Mills Road Realignment (\$1.8M)
- Main Street Corridor Improvements (\$2.9M)





Project Identification



Averette Road/Young Street/Rolesville Road

- Look at existing traffic analyses
- Consider congestion mitigation strategies
- *How can this roadway better accommodate new growth?*





Community Funding Areas

- Integration with Wake Forest
- Consideration of micromobility
- Identification of likely user groups and destinations
- Integration of multimodal accommodations

Prioritization and Implementation

WHEN?

Establish an expectation of schedule

WHY?

Relate the project to the Plan's goals and objectives

HOW MUCH?

Develop estimates of probable construction cost

WHAT NEXT?

Define the initial steps and action items

WHO?

Identify the responsible agencies and parties

Points of Contact

Danny
Johnson

danny.johnson@rolesville.nc.gov

919-554-6517

Allison
Fluitt

allison.fluitt@kimley-horn.com

919-653-2947

Jonathan
Whitehurst

jonathan.whitehurst@kimley-horn.com

704-954-7465
