

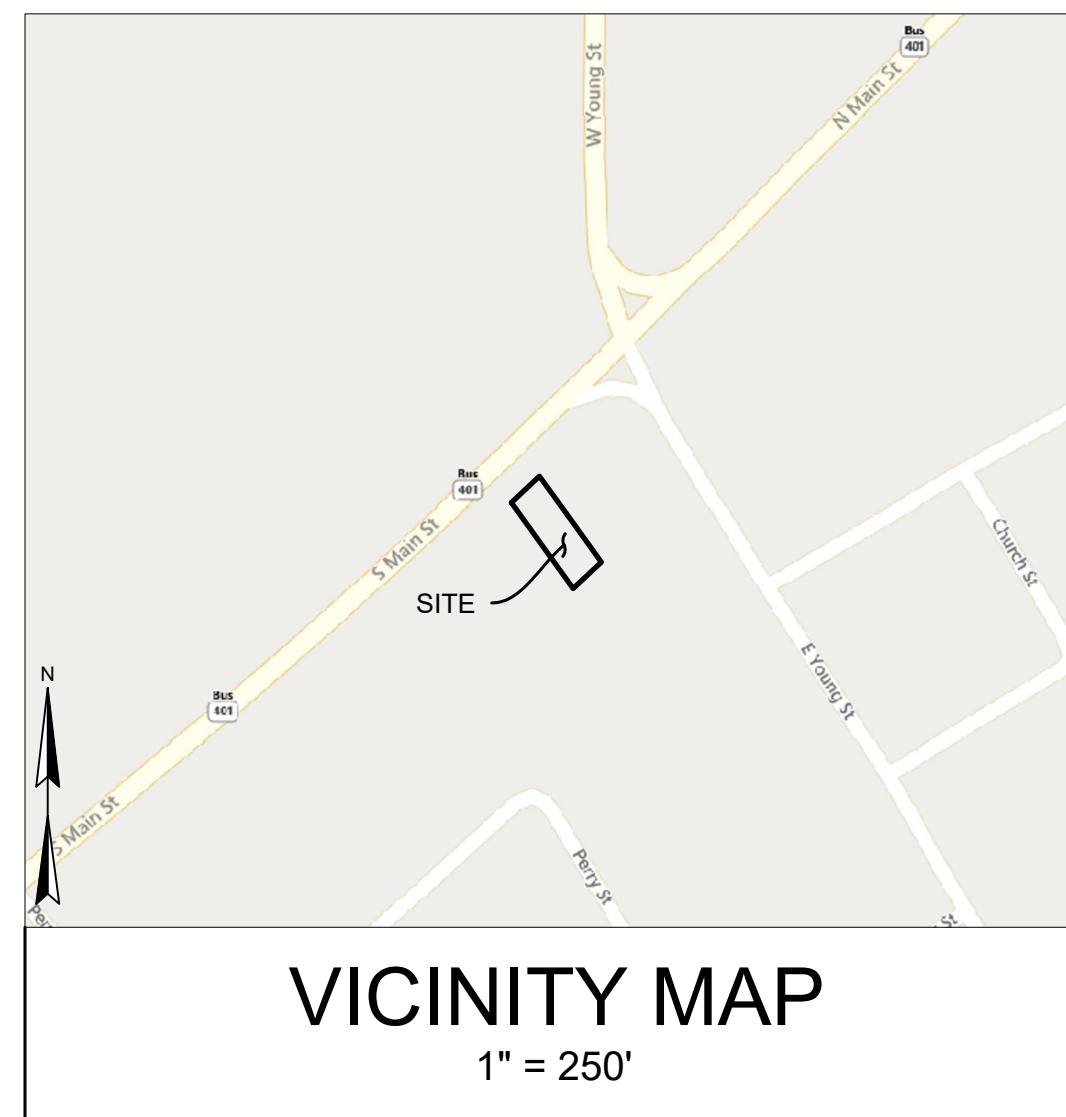


V1 -  
SDP-24-04

# SITE CONSTRUCTION PLANS FOR

# SALON

105 S MAIN ST  
ROLESVILLE, NORTH CAROLINA  
PIN: 1769-01-5157



VICINITY MAP  
1" = 250'

REVISION HISTORY

REV #	DESCRIPTION	DATE	BY

ORIGINAL PLAN SIZE: 24" X 36"

SHEET	TITLE
C-1	COVER
C-2	EXISTING CONDITIONS & DEMOLITION PLAN
C-3	SITE PLAN
C-4	UTILITY PLAN
C-5	GRADING AND EROSION & SEDIMENT CONTROL PLAN
C-6	LANDSCAPING PLAN
C-7	SITE DETAILS
C-8	EROSION & SEDIMENT CONTROL DETAILS
C-9	WATER & SEWER DETAILS

SCALE ADJUSTMENT  
THIS BAR IS 1 INCH IN LENGTH  
ON ORIGINAL DRAWING  
0 1"  
IF IT IS NOT 1 INCH ON THIS  
SHEET, ADJUST YOUR SCALE  
ACCORDINGLY

**OWNER/DEVELOPER:**

DRAGONFLY INVESTMENTS NC LLC  
CONTACT: ALLEN CLARK  
15405 NEW LIGHT RD  
WAKE FOREST, NC 27587  
919.868.1576  
ALLEN@WHITEWATERHOMES.BIZ

**ENGINEER OF RECORD:**

FLM ENGINEERING, INC  
CONTACT: JON FRAZIER, PE  
PO BOX 91727  
RALEIGH, NC 27675  
919.610.1051  
JFRAZIER@FLMENGINEERING.COM

SITE CONSTRUCTION PLANS  
  
SALON  
  
105 S MAIN ST  
ROLESVILLE, NC 27571

DRAGONFLY INVESTMENTS LLC

DATE:	04-26-2024
SCALE:	AS SHOWN
DESIGNED BY:	FLM
APPROVED BY:	FLM
PROJECT NO.:	23043

COVER

**C-1**  
SHEET 1 OF 9

CALL 48 HOURS BEFORE  
YOU DIG  
**North Carolina 811**  
www.nc811.org  
NORTH CAROLINA  
ONE-CALL CENTER  
1-800-632-4949

PROPOSED INFRASTRUCTURE QUANTITIES			
ITEM	OWNERSHIP	DIAMETER / MATERIAL	LENGTH
WATER	CITY OF RALEIGH	STUB	1
SEWER	CITY OF RALEIGH	STUB	1

**CITY OF RALEIGH - PLANS AUTHORIZED FOR CONSTRUCTION**  
ELECTRONIC APPROVAL: THIS APPROVAL IS BEING ISSUED ELECTRONICALLY. THIS APPROVAL IS VALID ONLY UPON THE SIGNATURE OF A CITY OF RALEIGH REVIEW OFFICER BELOW. THE CITY WILL RETAIN A COPY OF THE APPROVED PLANS. ANY WORK AUTHORIZED BY THIS APPROVAL MUST PROCEED IN ACCORDANCE WITH THE PLANS KEPT ON FILE WITH THE CITY. THIS ELECTRONIC APPROVAL MAY NOT BE EDITED ONCE ISSUED. ANY MODIFICATION TO THIS APPROVAL ONCE ISSUED WILL INVALIDATE THIS APPROVAL.  
CITY OF RALEIGH DEVELOPMENT APPROVAL \_\_\_\_\_  
RALEIGH WATER REVIEW OFFICER

ALL CONSTRUCTION SHALL BE IN ACCORDANCE WITH ALL TOWN OF ROLESVILLE, CITY OF RALEIGH AND WAKE COUNTY STANDARDS AND SPECIFICATIONS



**NOTES**

- BOUNDARY AND TOPOGRAPHIC SURVEY DATA PROVIDED BY CAWTHORNE, MOSS & PANCIERA, P.C.
- THE UTILITIES SHOWN ARE NOT GUARANTEED TO BE A REPRESENTATION OF ALL UTILITIES WITHIN THE PROJECT EXTENT.
- THE CONTRACTOR SHALL CALL THE NORTH CAROLINA ONE-CALL-CENTER AT LEAST 48 HOURS PRIOR TO BEGINNING WORK.
- THE CONTRACTOR SHALL VERIFY DEPTHS AND LOCATIONS OF ALL UTILITIES PRIOR TO BEGINNING WORK AND SHALL USE CARE WHEN OPERATING AROUND EXISTING UTILITIES.
- THE CONTRACTOR SHALL BE FINANCIALLY RESPONSIBLE FOR THE REPAIR OF ANY EXISTING UTILITIES DAMAGED DURING CONSTRUCTION.

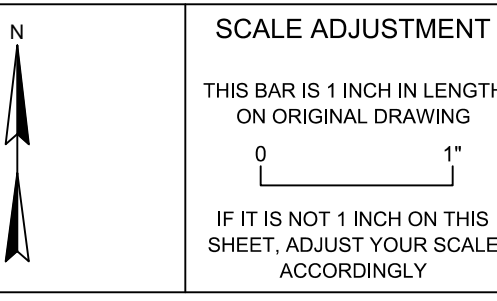
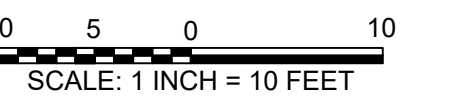
**LEGEND**

- EX. PROPERTY LINE
- - - EX. RIGHT-OF-WAY
- - - - - EX. ADJACENT OWNERS
- OHW — OHW — EX. OVERHEAD ELECTRIC LINE
- W — W — EX. WATER LINE
- G — G — EX. GAS LINE
- SS — SS — EX. SANITARY SEWER
- SD — SD — EX. STORM SEWER
- - - 440 - - - EX. MAJOR CONTOUR (5')
- - - 439 - - - EX. MINOR CONTOUR (1')

REVISION HISTORY

REV #	DESCRIPTION	DATE	BY

ORIGINAL PLAN SIZE: 24" X 36"



SITE CONSTRUCTION PLANS

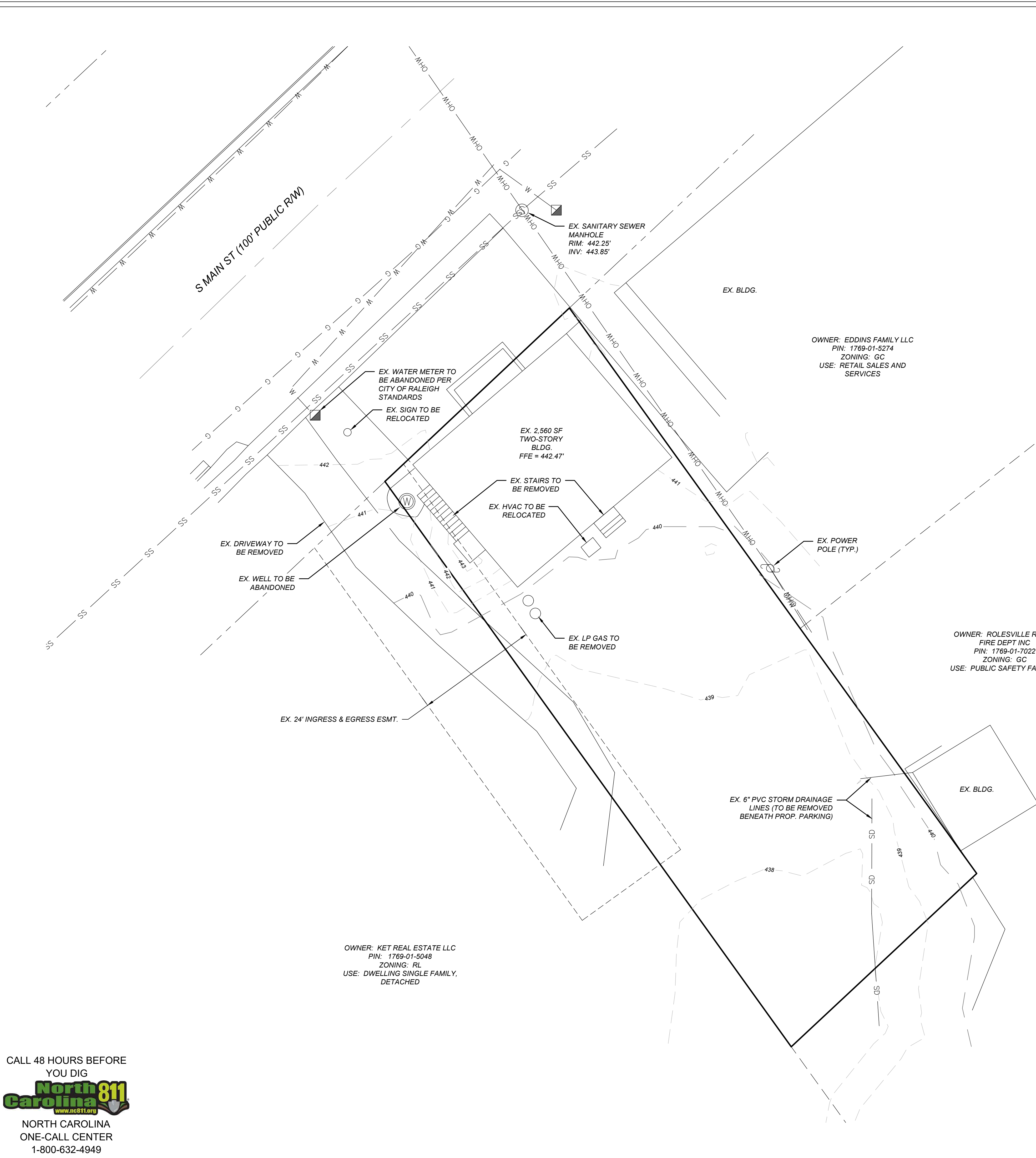
SALON  
105 S MAIN ST  
ROLESVILLE, NC 27571

DRAGONFLY INVESTMENTS LLC

DATE:	04-26-2024
SCALE:	AS SHOWN
DESIGNED BY:	FLM
APPROVED BY:	FLM
PROJECT NO.:	23043

EXISTING CONDITIONS & DEMOLITION PLAN

**C-2**



OWNER: EDDINS FAMILY LLC  
PIN: 1769-01-5274  
ZONING: GC  
USE: RETAIL SALES AND SERVICES

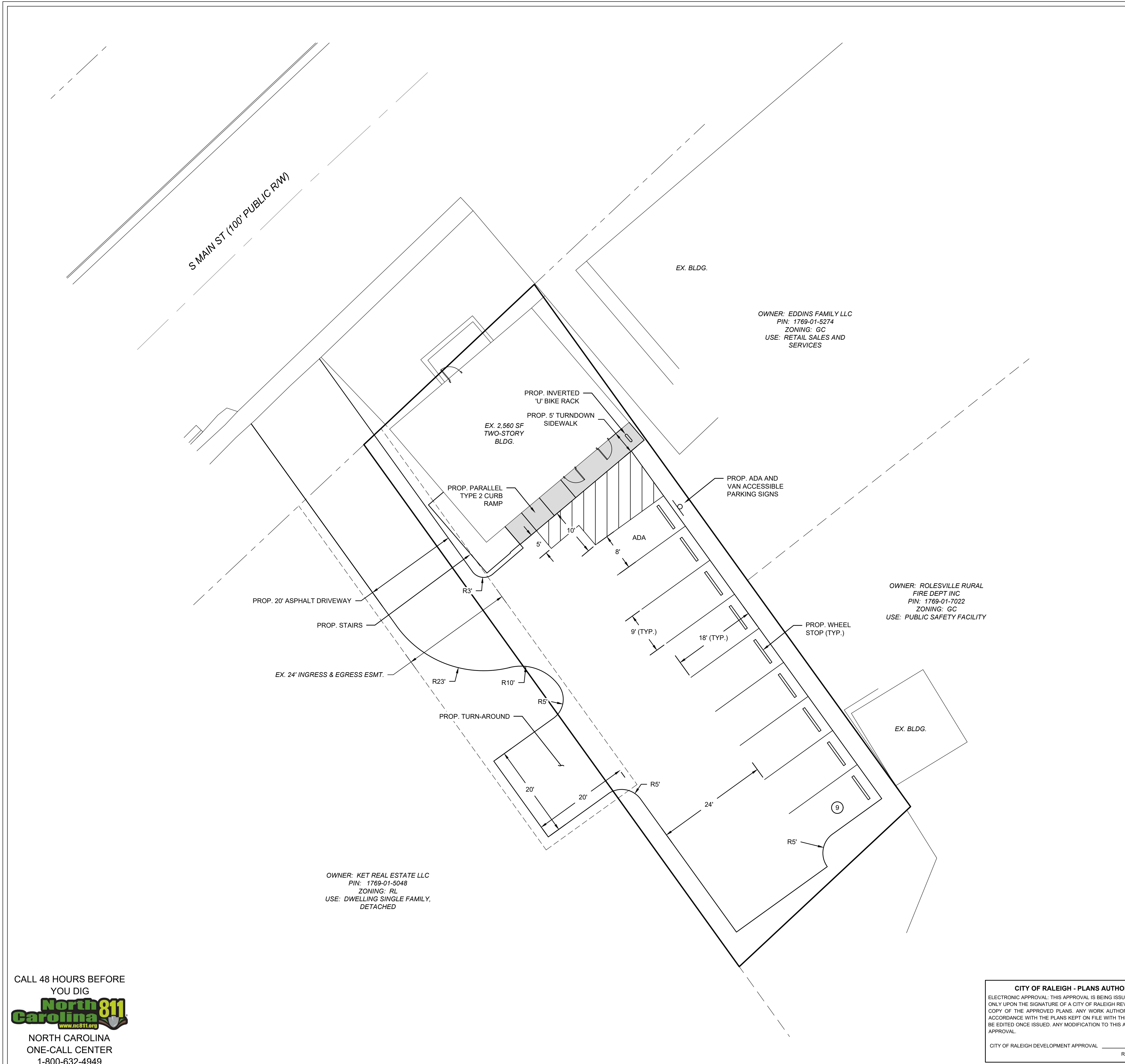
OWNER: ROLESVILLE RURAL  
FIRE DEPT INC  
PIN: 1769-01-7022  
ZONING: GC  
USE: PUBLIC SAFETY FACILITY

OWNER: KET REAL ESTATE LLC  
PIN: 1769-01-5048  
ZONING: RL  
USE: DWELLING SINGLE FAMILY,  
DETACHED

CALL 48 HOURS BEFORE  
YOU DIG  
**North Carolina 811**  
www.nc811.org  
NORTH CAROLINA  
ONE-CALL CENTER  
1-800-632-4949

**CITY OF RALEIGH - PLANS AUTHORIZED FOR CONSTRUCTION**  
ELECTRONIC APPROVAL: THIS APPROVAL IS BEING ISSUED ELECTRONICALLY. THIS APPROVAL IS VALID ONLY UPON THE SIGNATURE OF A CITY OF RALEIGH REVIEW OFFICER BELOW. THE CITY WILL RETAIN A COPY OF THE APPROVED PLANS. ANY WORK AUTHORIZED BY THIS APPROVAL MUST PROCEED IN ACCORDANCE WITH THE PLANS KEPT ON FILE WITH THE CITY. THIS ELECTRONIC APPROVAL MAY NOT BE EDITED ONCE ISSUED. ANY MODIFICATION TO THIS APPROVAL ONCE ISSUED WILL INVALIDATE THIS APPROVAL.  
CITY OF RALEIGH DEVELOPMENT APPROVAL \_\_\_\_\_  
RALEIGH WATER REVIEW OFFICER \_\_\_\_\_

**ALL CONSTRUCTION SHALL BE IN ACCORDANCE WITH ALL TOWN OF ROLESVILLE, CITY OF RALEIGH AND WAKE COUNTY STANDARDS AND SPECIFICATIONS**



SUMMARY INFORMATION	
<b>DEVELOPMENT NAME:</b>	SALON
<b>SITE ADDRESS:</b>	8105 S MAIN ST, ROLESVILLE, NC 27571
<b>PIN NUMBER(S):</b>	1769-01-5157
<b>TOTAL ACREAGE:</b>	0.168 AC
<b>EXISTING USE:</b>	RETAIL SALES AND SERVICES
<b>PROPOSED USE:</b>	RETAIL SALES AND SERVICES
<b>JURISDICTION:</b>	TOWN OF ROLESVILLE
<b>CURRENT ZONING DISTRICT:</b>	GC
<b>SETBACKS:</b>	
<b>FRONT:</b>	20'
<b>SIDE:</b>	15'
<b>REAR:</b>	35'
<b>EXISTING BUILDING AREA:</b>	2,560 SF
<b>PROPOSED BUILDING AREA:</b>	2,560 SF
<b>REQUIRED PARKING:</b>	2.5 SPACES PER 1,000 SF = 2,560 SF / 2.5 SPACES / 1,000 SF = 6.4 SPACE
<b>PROPOSED PARKING:</b>	9 SPACES (1 ADA, VAN ACCESSIBLE)
<b>REQUIRED BICYCLE PARKING:</b>	1 SPACE
<b>PROVIDED BICYCLE PARKING:</b>	2 SPACES (1 INVERTED 'U' RACK)
<b>WATERSHED:</b>	LOWER NEUSE RIVER
<b>EXISTING IMPERVIOUS AREA:</b>	1,600 SF (0.04 AC) OR 25%
<b>PROPOSED IMPERVIOUS AREA:</b>	5,830 SF (0.13 AC) OR 80%

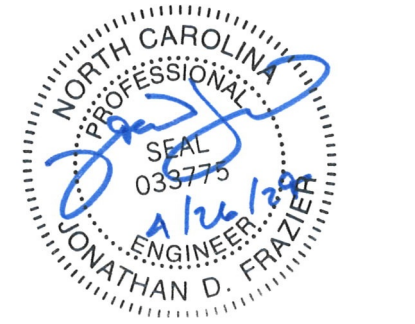
- NOTES**
- PROPOSED ADA STALL AND AISLE SHALL HAVE SLOPES NO STEEPER THAN 1:48 (2%) IN ALL DIRECTIONS.
  - PROPOSED ACCESSIBLE ROUTES SHALL HAVE RUNNING SLOPES NO STEEPER THAN 1:20 (5%) AND CROSS SLOPES NO STEEPER THAN 1:48 (2%).
  - DIMENSIONS SHOWN ARE TO FACE OF CURB UNLESS OTHERWISE NOTED.
  - ADA PARKING SIGNS (R7-8 & R7-8A) SHALL BE PLACED IN FRONT OF THE ADA PARKING STALL.
  - STRIPING FOR PARKING STALLS AND CROSSWALK SHALL BE AS SHOWN.
  - SOLID WASTE COLLECTION SHALL BE BY ROLL-OUT CARTS CONTRACTED PRIVATELY. ROLL-OUT CARTS WILL BE COLLECTED ONSITE AND NOT AT THE ROAD.

**LEGEND**

	EX. PROPERTY LINE
	EX. RIGHT-OF-WAY
	EX. ADJACENT OWNERS



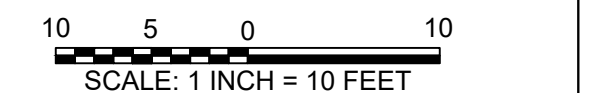
POST OFFICE BOX 91727  
 RALEIGH, NORTH CAROLINA 27675  
 PHONE: 919.610.1051  
 FIRM NC LICENSE NUMBER C-4222



**REVISION HISTORY**

REV #	DESCRIPTION	DATE	BY

ORIGINAL PLAN SIZE: 24" X 36"



**SCALE ADJUSTMENT**  
 THIS BAR IS 1 INCH IN LENGTH ON ORIGINAL DRAWING  
 IF IT IS NOT 1 INCH ON THIS SHEET, ADJUST YOUR SCALE ACCORDINGLY

**SITE CONSTRUCTION PLANS**  
**SALON**  
 105 S MAIN ST  
 ROLESVILLE, NC 27571

**DRAGONFLY INVESTMENTS LLC**

DATE:	04-26-2024
SCALE:	AS SHOWN
DESIGNED BY:	FLM
APPROVED BY:	FLM
PROJECT NO.:	23043

**SITE PLAN**

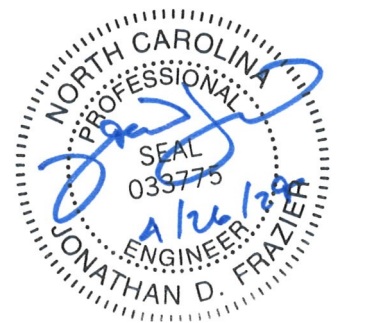
**C-3**  
 SHEET 3 OF 9

CALL 48 HOURS BEFORE YOU DIG  
**North Carolina 811**  
 www.nc811.org  
 NORTH CAROLINA ONE-CALL CENTER  
 1-800-632-4949

**CITY OF RALEIGH - PLANS AUTHORIZED FOR CONSTRUCTION**  
 ELECTRONIC APPROVAL: THIS APPROVAL IS BEING ISSUED ELECTRONICALLY. THIS APPROVAL IS VALID ONLY UPON THE SIGNATURE OF A CITY OF RALEIGH REVIEW OFFICER BELOW. THE CITY WILL RETAIN A COPY OF THE APPROVED PLANS. ANY WORK AUTHORIZED BY THIS APPROVAL MUST PROCEED IN ACCORDANCE WITH THE PLANS KEPT ON FILE WITH THE CITY. THIS ELECTRONIC APPROVAL MAY NOT BE EDITED ONCE ISSUED. ANY MODIFICATION TO THIS APPROVAL ONCE ISSUED WILL INVALIDATE THIS APPROVAL.  
 CITY OF RALEIGH DEVELOPMENT APPROVAL: \_\_\_\_\_ RALEIGH WATER REVIEW OFFICER: \_\_\_\_\_

**ALL CONSTRUCTION SHALL BE IN ACCORDANCE WITH ALL TOWN OF ROLESVILLE, CITY OF RALEIGH AND WAKE COUNTY STANDARDS AND SPECIFICATIONS**

© 2024 THIS DRAWING SHALL NOT BE REPRODUCED IN WHOLE OR IN PART WITHOUT WRITTEN PERMISSION OF FLM ENGINEERING, INC.



REVISION HISTORY

REV #	DESCRIPTION	DATE	BY

ORIGINAL PLAN SIZE: 24" X 36"

10 5 0 10  
SCALE: 1 INCH = 10 FEET

**SCALE ADJUSTMENT**  
THIS BAR IS 1 INCH IN LENGTH ON ORIGINAL DRAWING  
0 1"  
IF IT IS NOT 1 INCH ON THIS SHEET, ADJUST YOUR SCALE ACCORDINGLY

SITE CONSTRUCTION PLANS

**SALON**  
105 S MAIN ST  
ROLESVILLE, NC 27571

DRAGONFLY INVESTMENTS LLC

DATE:	04-26-2024
SCALE:	AS SHOWN
DESIGNED BY:	FLM
APPROVED BY:	FLM
PROJECT NO.:	23043

UTILITY PLAN

**C-4**  
SHEET 4 OF 9

**NOTES**

- ALL WATER AND SANITARY SEWER CONSTRUCTION SHALL BE IN ACCORDANCE WITH CITY OF RALEIGH STANDARDS AND SPECIFICATIONS.
- THE UTILITIES SHOWN ARE NOT GUARANTEED TO BE A REPRESENTATION OF ALL UTILITIES WITHIN THE PROJECT EXTENT.
- THE CONTRACTOR SHALL CALL THE NORTH CAROLINA ONE-CALL-CENTER AT LEAST 48 HOURS PRIOR TO BEGINNING WORK.
- THE CONTRACTOR SHALL VERIFY DEPTHS AND LOCATIONS OF ALL UTILITIES PRIOR TO BEGINNING WORK AND SHALL USE CARE WHEN OPERATING AROUND EXISTING UTILITIES.
- THE CONTRACTOR SHALL BE FINANCIALLY RESPONSIBLE FOR THE REPAIR OF ANY EXISTING UTILITIES DAMAGED DURING CONSTRUCTION.

**CITY OF RALEIGH STANDARD UTILITY NOTES (AS APPLICABLE)**

- ALL MATERIALS & CONSTRUCTION METHODS SHALL BE IN ACCORDANCE WITH CITY OF RALEIGH DESIGN STANDARDS, DETAILS & SPECIFICATIONS (REFERENCE: CORPUD HANDBOOK, CURRENT EDITION).
- UTILITY SEPARATION REQUIREMENTS:
  - A DISTANCE OF 10' SHALL BE MAINTAINED BETWEEN SANITARY SEWER & ANY PRIVATE OR PUBLIC WATER SUPPLY SOURCE SUCH AS AN IMPOUNDED RESERVOIR USED AS A SOURCE OF DRINKING WATER, IF ADEQUATE LATERAL SEPARATION CANNOT BE ACHIEVED, FERROUS SANITARY SEWER PIPE SHALL BE SPECIFIED & INSTALLED TO WATERLINE SPECIFICATIONS. HOWEVER, THE MINIMUM SEPARATION SHALL NOT BE LESS THAN 25' FROM A PRIVATE WELL OR 50' FROM A PUBLIC WELL.
  - WHEN INSTALLING WATER &/OR SEWER MAINS, THE HORIZONTAL SEPARATION BETWEEN UTILITIES SHALL BE 10'. IF THIS SEPARATION CANNOT BE MAINTAINED DUE TO EXISTING CONDITIONS, THE VARIATION ALLOWED IS THE WATER MAIN IN A SEPARATE TRENCH WITH THE ELEVATION OF THE WATER MAIN AT LEAST 18" ABOVE THE TOP OF THE SEWER & MUST BE APPROVED BY THE PUBLIC UTILITIES DIRECTOR. ALL DISTANCES ARE MEASURED FROM OUTSIDE DIAMETER TO OUTSIDE DIAMETER.
  - WHERE IT IS IMPOSSIBLE TO OBTAIN PROPER SEPARATION, OR ANYTIME A SANITARY SEWER PASSES OVER A WATERMAIN, DIP MATERIALS OR STEEL ENCASUREMENT EXTENDED 10' ON EACH SIDE OF CROSSING MUST BE SPECIFIED & INSTALLED TO WATERLINE SPECIFICATIONS.
  - 5'0" MINIMUM HORIZONTAL SEPARATION IS REQUIRED BETWEEN ALL SANITARY SEWER & STORM SEWER FACILITIES, UNLESS DIP MATERIAL IS SPECIFIED FOR SANITARY SEWER
  - MAINTAIN 18" MIN. VERTICAL SEPARATION AT ALL WATERMAIN & RCP STORM DRAIN CROSSINGS, MAINTAIN 18" MIN. VERTICAL SEPARATION AT ALL SANITARY SEWER & RCP STORM DRAIN CROSSINGS. WHERE ADEQUATE SEPARATIONS CANNOT BE ACHIEVED, SPECIFY DIP MATERIALS & A CONCRETE CRADLE HAVING 6" MIN. CLEARANCE (PER CORPUD DETAILS W-41 & S-49).
  - ALL OTHER UNDERGROUND UTILITIES SHALL CROSS WATER & SEWER FACILITIES WITH 18" MIN. VERTICAL SEPARATION REQUIRED.
- ANY NECESSARY FIELD REVISIONS ARE SUBJECT TO REVIEW & APPROVAL OF AN AMENDED PLAN &/OR PROFILE BY THE CITY OF RALEIGH PUBLIC UTILITIES DEPARTMENT PRIOR TO CONSTRUCTION.
- DEVELOPER SHALL PROVIDE 30 DAYS ADVANCE WRITTEN NOTICE TO OWNER FOR ANY WORK REQUIRED WITHIN AN EXISTING CITY OF RALEIGH UTILITY EASEMENT TRAVERSING PRIVATE PROPERTY.
- CONTRACTOR SHALL MAINTAIN CONTINUOUS WATER & SEWER SERVICE TO EXISTING RESIDENCES & BUSINESSES THROUGHOUT CONSTRUCTION OF PROJECT. ANY NECESSARY SERVICE INTERRUPTIONS SHALL BE PRECEDED BY A 24-HOUR ADVANCE NOTICE TO THE CITY OF RALEIGH PUBLIC UTILITIES DEPARTMENT.
- SEWER BYPASS PUMPING - A BYPASS PLAN SEALED BY AN NC PROFESSIONAL ENGINEER SHALL BE PROVIDED TO RALEIGH WATER PRIOR TO PUMPING OPERATIONS FOR APPROVAL. THE OPERATIONS AND EQUIPMENT SHALL COMPLY WITH THE PUBLIC UTILITIES HANDBOOK.
- 3'0" MINIMUM COVER IS REQUIRED ON ALL WATER MAINS & SEWER FORCE MAINS. 4'0" MINIMUM COVER IS REQUIRED ON ALL REUSE MAINS.
- IT IS THE DEVELOPER'S RESPONSIBILITY TO ABANDON OR REMOVE EXISTING WATER & SEWER SERVICES NOT BEING USED IN REDEVELOPMENT OF A SITE UNLESS OTHERWISE DIRECTED BY THE CITY OF RALEIGH PUBLIC UTILITIES DEPARTMENT. THIS INCLUDES ABANDONING TAP AT MAIN & REMOVAL OF SERVICE FROM ROW OR EASEMENT PER CORPUD HANDBOOK PROCEDURE.
- INSTALL 1/2" COPPER WATER SERVICES WITH METERS LOCATED AT ROW OR WITHIN A 2'X2' WATERLINE EASEMENT IMMEDIATELY ADJACENT. NOTE: IT IS THE APPLICANT'S RESPONSIBILITY TO PROPERLY SIZE THE WATER SERVICE FOR EACH CONNECTION TO PROVIDE ADEQUATE FLOW & PRESSURE.
- INSTALL 4" PVC SEWER SERVICES @ 1.0% MINIMUM GRADE WITH CLEANOUTS LOCATED AT ROW OR EASEMENT LINE & SPACED EVERY 75 LINEAR FEET MAXIMUM.
- PRESSURE REDUCING VALVES ARE REQUIRED ON ALL WATER SERVICES EXCEEDING 80 PSI; BACKWATER VALVES ARE REQUIRED ON ALL SANITARY SEWER SERVICES HAVING BUILDING DRAINS LOWER THAN 1'0" ABOVE THE NEXT UPSTREAM MANHOLE.
- ALL ENVIRONMENTAL PERMITS APPLICABLE TO THE PROJECT MUST BE OBTAINED FROM NCDWQ, USACE &/OR FEMA FOR ANY RIPARIAN BUFFER, WETLAND &/OR FLOODPLAIN IMPACTS (RESPECTIVELY) PRIOR TO CONSTRUCTION.
- NCDOT / RAILROAD ENCROACHMENT AGREEMENTS ARE REQUIRED FOR ANY UTILITY WORK (INCLUDING MAIN EXTENSIONS & SERVICE TAPS) WITHIN STATE OR RAILROAD ROW PRIOR TO CONSTRUCTION.
- GREASE INTERCEPTOR / OIL WATER SEPARATOR SIZING CALCULATIONS & INSTALLATION SPECIFICATIONS SHALL BE APPROVED BY THE RW FOG PROGRAM COORDINATOR PRIOR TO ISSUANCE OF A LIC AND/OR BUILDING PERMIT. CONTACT (919) 996-4516 OR FOG@RALEIGHNC.GOV FOR MORE INFORMATION.
- CROSS-CONNECTION CONTROL PROTECTION DEVICES ARE REQUIRED BASED ON THE DEGREE OF HEALTH HAZARD INVOLVED AS LISTED IN APPENDIX B OF THE RULES GOVERNING PUBLIC WATER SYSTEMS IN NORTH CAROLINA.
- THE DEVICES SHALL MEET THE AMERICAN SOCIETY OF SANITARY ENGINEERING (ASAE) STANDARDS AND BE ON THE UNIVERSITY OF SOUTHERN CALIFORNIA APPROVAL LIST.
- THE DEVICE AND INSTALLATION SHALL MEE THE GUIDELINES OF APPENDIX A - GUIDELINES AND REQUIREMENTS FOR THE CROSS CONNECTION PROGRAM IN RALEIGH'S SERVICE AREA.
- THE DEVICES SHALL BE INSTALLED AND TESTED (BOTH, INITIAL AND PERIODIC TESTING THEREAFTER) IN ACCORDANCE WITH THE MANUFACTURER'S RECOMMENDATIONS OR THE LOCAL CROSS CONNECTION CONTROL PROGRAM, WHICHEVER IS MORE STRINGENT. CONTACT CROSS-CONNECTION@RALEIGHNC.GOV FOR MORE INFORMATION.
- NOTICE FOR PROJECTS THAT INVOLVE AN OVERSIZED MAIN OR URBAN MAIN REPLACEMENT, ANY CITY REIMBURSEMENT GREATER THAN \$250,000.00 MUST UNDERGO THE PUBLIC BIDDING PROCESS.

**LEGEND**

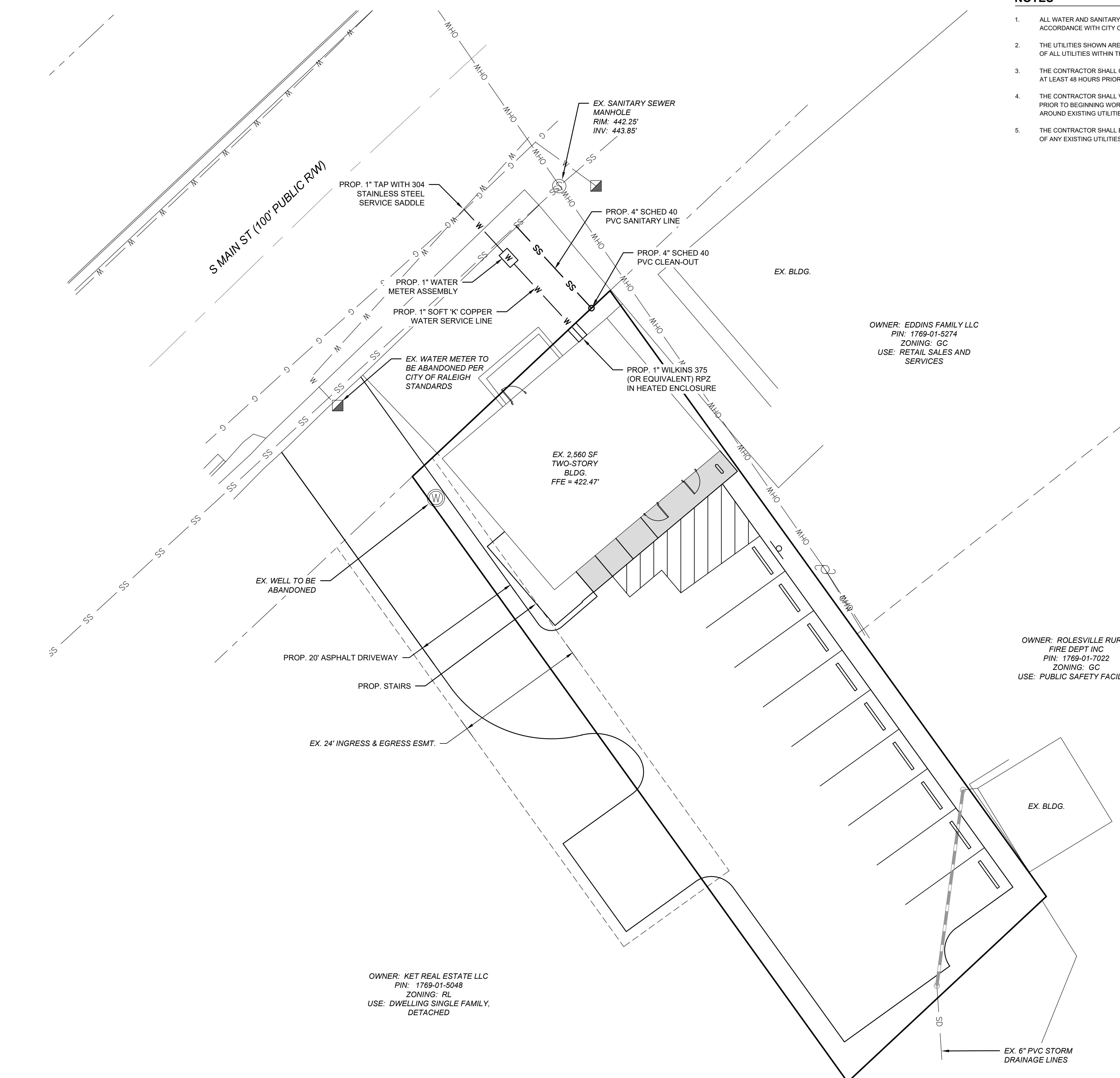
- EX. PROPERTY LINE
- - - - EX. RIGHT-OF-WAY
- - - - EX. ADJACENT OWNERS
- OHW — OHW — EX. OVERHEAD ELECTRIC LINE
- W — W — EX. WATER LINE
- G — G — EX. GAS LINE
- SS — SS — EX. SANITARY SEWER
- SD — SD — EX. STORM SEWER
- W — W — PROP. WATER LINE
- SS — SS — PROP. SANITARY SEWER
- — — — PROP. STORM SEWER

**CITY OF RALEIGH - PLANS AUTHORIZED FOR CONSTRUCTION**

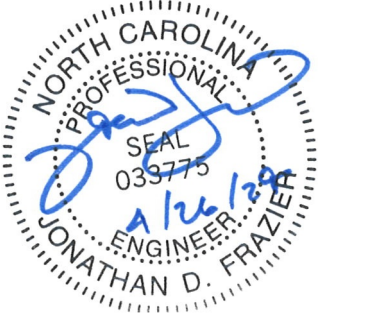
ELECTRONIC APPROVAL: THIS APPROVAL IS BEING ISSUED ELECTRONICALLY. THIS APPROVAL IS VALID ONLY UPON THE SIGNATURE OF A CITY OF RALEIGH REVIEW OFFICER BELOW. THE CITY WILL RETAIN A COPY OF THE APPROVED PLANS. ANY WORK AUTHORIZED BY THIS APPROVAL MUST PROCEED IN ACCORDANCE WITH THE PLANS KEPT ON FILE WITH THE CITY. THIS ELECTRONIC APPROVAL MAY NOT BE EDITED ONCE ISSUED. ANY MODIFICATION TO THIS APPROVAL ONCE ISSUED WILL INVALIDATE THIS APPROVAL.

CITY OF RALEIGH DEVELOPMENT APPROVAL \_\_\_\_\_ RALEIGH WATER REVIEW OFFICER \_\_\_\_\_

**ALL CONSTRUCTION SHALL BE IN ACCORDANCE WITH ALL TOWN OF ROLESVILLE, CITY OF RALEIGH AND WAKE COUNTY STANDARDS AND SPECIFICATIONS**



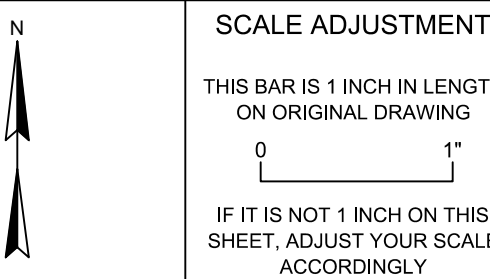
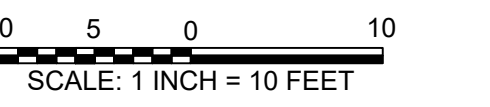
CALL 48 HOURS BEFORE YOU DIG  
**North Carolina 811**  
[www.nc811.org](http://www.nc811.org)  
NORTH CAROLINA ONE-CALL CENTER  
1-800-632-4949



REVISION HISTORY

REV #	DESCRIPTION	DATE	BY

ORIGINAL PLAN SIZE: 24" X 36"



SITE CONSTRUCTION PLANS  
SALON  
105 S MAIN ST  
ROLESVILLE, NC 27571

DRAGONFLY INVESTMENTS LLC

DATE:	04-26-2024
SCALE:	AS SHOWN
DESIGNED BY:	FLM
APPROVED BY:	FLM
PROJECT NO.:	23043

GRADING AND EROSION & SEDIMENT CONTROL PLAN

**C-5**  
SHEET 5 OF 9

**CONSTRUCTION SEQUENCE**

1. INSTALL GRAVEL CONSTRUCTION PAD, SILT FENCE, OR OTHER MEASURES AS SHOWN ON THE APPROVED PLAN.
2. BEGIN CLEARING AND GRUBBING. MAINTAIN DEVICES AS NEEDED.
3. BEGIN ROUGH GRADING.
4. INSTALL STORM, WATER, AND SEWER UTILITIES.
5. STABILIZE SITE AS AREAS ARE BROUGHT UP TO FINISH GRADE WITH VEGETATION, PAVING, ETC. SEED AND MULCH DENUDED AREAS PER GROUND STABILIZATION TIME FRAMES.
6. REMOVE TEMPORARY SILT FENCE, ETC., AND SEED OR STABILIZE ANY RESULTING BARE AREAS.

**EROSION CONTROL NOTES**

1. ALL LAND DISTURBING ACTIVITIES SHALL BE CONDUCTED IN ACCORDANCE WITH WAKE COUNTY AND NCDEQ STANDARDS.
2. ALL TEMPORARY EROSION CONTROL MEASURES SHALL BE MAINTAINED IN PROPER WORKING CONDITION DURING THE PERIOD OF CONSTRUCTION.
3. ADDITIONAL EROSION CONTROL MEASURES AND/OR MODIFICATIONS TO PROPOSED MEASURES MAY BE NECESSARY DEPENDING ON ACTUAL SITE CONDITIONS.

4. THE TOTAL DISTURBED AREA IS 0.19 ACRE.

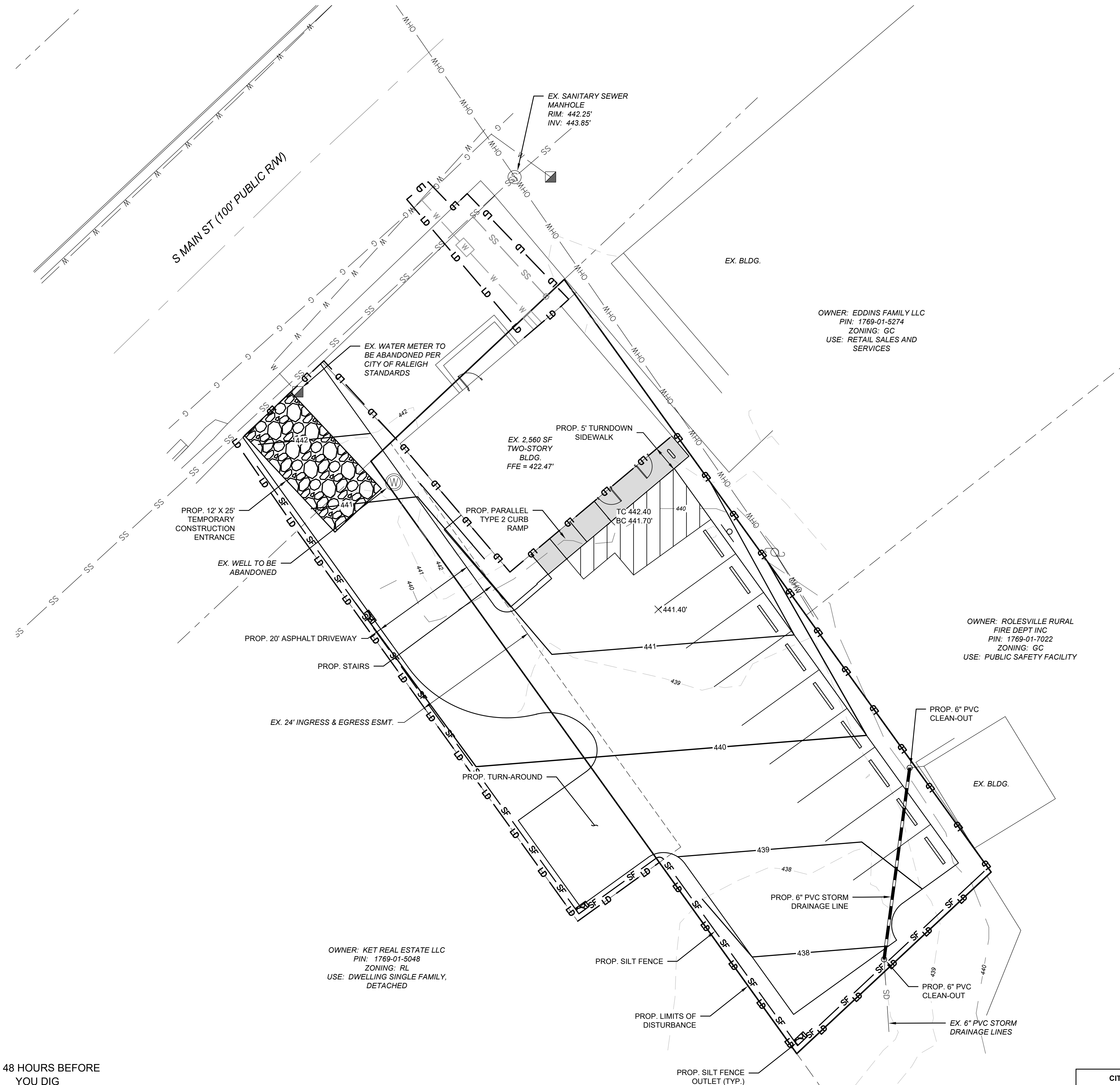
5. SILT FENCE OUTLETS TO BE PLACED AS SHOWN AND AT LOW POINTS ALONG SILT FENCE AS NECESSARY.

**GRADING & DRAINAGE NOTES**

1. PROPOSED CONTOURS REPRESENT FINISH GRADES.
2. PROPOSED ADA STALL AND AISLE SHALL HAVE SLOPES NO STEEPER THAN 1:48 (2%) IN ALL DIRECTIONS.
3. PROPOSED ACCESSIBLE ROUTES SHALL HAVE RUNNING SLOPES NO STEEPER THAN 1:20 (5%) AND CROSS SLOPES NO STEEPER THAN 1:48 (2%).

**LEGEND**

- EX. PROPERTY LINE
- - - EX. RIGHT-OF-WAY
- - - EX. ADJACENT OWNERS
- OHW — OHW — EX. OVERHEAD ELECTRIC LINE
- W — W — EX. WATER LINE
- G — G — EX. GAS LINE
- SS — SS — EX. SANITARY SEWER
- SD — SD — EX. STORM SEWER
- 440 — EX. MAJOR CONTOUR (5')
- 439 — EX. MINOR CONTOUR (1')
- W — W — PROP. WATER LINE
- SS — SS — PROP. SANITARY SEWER
- — — PROP. STORM SEWER
- 440 — PROP. MAJOR CONTOUR (5')
- 439 — PROP. MINOR CONTOUR (1')
- LD — LD — PROP. LIMIT OF DISTURBANCE
- SF — SF — PROP. SILT FENCE
- PROP. CONSTRUCTION ENTRANCE
- PROP. SILT FENCE OUTLET



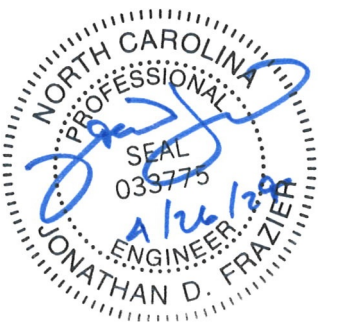
CALL 48 HOURS BEFORE YOU DIG  
**North Carolina 811**  
www.nc811.org  
NORTH CAROLINA ONE-CALL CENTER  
1-800-632-4949

**CITY OF RALEIGH - PLANS AUTHORIZED FOR CONSTRUCTION**

ELECTRONIC APPROVAL: THIS APPROVAL IS BEING ISSUED ELECTRONICALLY. THIS APPROVAL IS VALID ONLY UPON THE SIGNATURE OF A CITY OF RALEIGH REVIEW OFFICER BELOW. THE CITY WILL RETAIN A COPY OF THE APPROVED PLANS. ANY WORK AUTHORIZED BY THIS APPROVAL MUST PROCEED IN ACCORDANCE WITH THE PLANS KEPT ON FILE WITH THE CITY. THIS ELECTRONIC APPROVAL MAY NOT BE EDITED ONCE ISSUED. ANY MODIFICATION TO THIS APPROVAL ONCE ISSUED WILL INVALIDATE THIS APPROVAL.

CITY OF RALEIGH DEVELOPMENT APPROVAL \_\_\_\_\_  
RALEIGH WATER REVIEW OFFICER

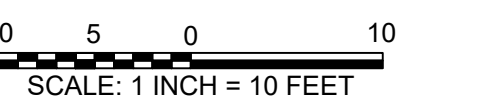
**ALL CONSTRUCTION SHALL BE IN ACCORDANCE WITH ALL TOWN OF ROLESVILLE, CITY OF RALEIGH AND WAKE COUNTY STANDARDS AND SPECIFICATIONS**



REVISION HISTORY

REV #	DESCRIPTION	DATE	BY

ORIGINAL PLAN SIZE: 24" X 36"



SCALE ADJUSTMENT  
THIS BAR IS 1 INCH IN LENGTH ON ORIGINAL DRAWING  
IF IT IS NOT 1 INCH ON THIS SHEET, ADJUST YOUR SCALE ACCORDINGLY

SITE CONSTRUCTION PLANS  
**SALON**  
105 S MAIN ST  
RALEIGH, NC 27571

DRAGONFLY INVESTMENTS LLC

DATE:	04-26-2024
SCALE:	AS SHOWN
DESIGNED BY:	FLM
APPROVED BY:	FLM
PROJECT NO.:	23043

LANDSCAPING PLAN

**NOTES**

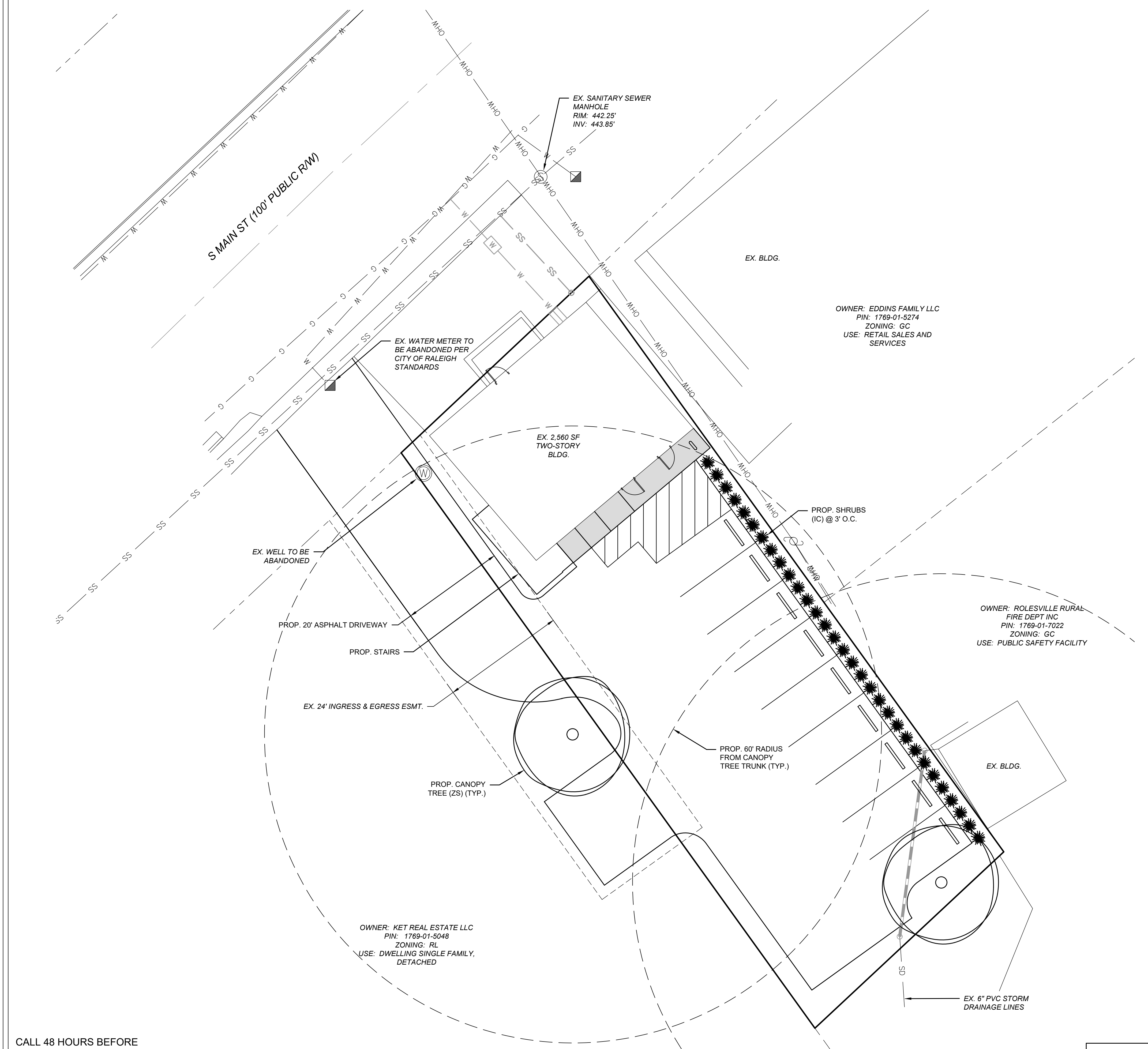
- ALL NEW PLANTINGS SHALL MEET THE REQUIREMENTS OF THE TOWN OF ROLESVILLE LAND DEVELOPMENT ORDINANCE (LDO) SECTION 6.2.
- NO CHANGE OF USE IS PROPOSED, THUS, PERIMETER BUFFERS ARE NOT REQUIRED.
- ALL DISTURBED AREAS NOT OCCUPIED BY STRUCTURES, PAVING OR PLANTINGS SHALL BE GRADED AND SEEDDED AS INDICATED IN SPECIFICATIONS.
- ALL TREE PLANTINGS SHALL BE MULCHED WITH 4" CLEAN, PINE STRAW MULCH.
- ALL PLANT BEDS TO BE EDGED WITH TYPICAL "V-CANNEL" EDGE.
- A MINIMUM OF FOUR INDIVIDUAL SOIL SAMPLES SHALL BE TAKEN THROUGHOUT THE SITE FOR OVERALL SOIL ANALYSIS.
- CONTRACTOR TO UTILIZE ALL ONSITE TOPSOIL. CONTRACTOR SHALL SUPPLY ADDITIONAL TOPSOIL AT NO ADDITIONAL COST TO OWNER IF EXISTING TOPSOIL IS NOT SUFFICIENT TO MEET THE NEEDS OF THIS PROJECT.
- ALL PLANTING AREAS TO RECEIVE 1 CY OF SOIL CONDITIONER FOR EACH 75 SF OF PLANT BED AREA. ACCEPTABLE SOIL CONDITIONERS SHALL BE PULVERIZED PINE BARK, PEAT MOSS OR SHREDDED/COMPOSTED LEAVES.
- CONTRACTOR TO FIELD VERIFY LOCATION OF EXISTING UTILITIES BEFORE BEGINNING OF GRADING AND LANDSCAPE INSTALLATION.
- CONTRACTOR TO VERIFY QUANTITIES OF PLANTINGS AS SHOWN. PLANTINGS INDICATED ON PLANS SHALL PREVAIL OVER QUANTITIES INDICATED IN PLANT LIST IF DISCREPANCIES ARISE.
- ALL PLANTS ARE TO BE THOROUGHLY "WATERED IN" THE SAME DAY AS PLANTED.
- THE PLANT HOLE WIDTH SHALL BE A MINIMUM THREE TIMES THE DIAMETER OF THE ROOT BALL.
- REMOVE ALL STRAPPING AND TWINE FROM ROOT BALL. REMOVE WIRE BASKET AND BURLAP FROM TOP 1/3 OF ROOT BALL BEFORE BACKFILLING AROUND BALL IS COMPLETED.
- ALL TREES WHICH ARE SMOOTH BARKED AT THE TIME OF PLANTING AND HAVE MORE THAN 2' OF ALL TREE WRAPPING SHALL EXTEND FROM THE TOP OF THE BACKFILL TO THE LOWERMOST TREE BRANCHES.
- ALL TREES, WHEN PLANTED, SHALL HAVE THE SAME RELATIONSHIP TO FINISHED GRADE AS TO THE GRADING PLAN.
- LANDSCAPING SHOWN MEETS QUANTITY REQUIREMENTS. ALL INSTALLATION AND MAINTENANCE SHALL BE PER TOWN OF ROLESVILLE UDO.
- ALL ADDITIONAL LANDSCAPING SHALL BE PER OWNER.

**LANDSCAPING REQUIREMENTS**

- PARKING LANDSCAPING:**
- ALL PARKING SPACES SHALL BE WITHIN 60' FROM THE TRUNK OF A CANOPY TREE
  - PARKING PERIMETER SHALL CONSIST OF A SINGLE CONTINUOUS ROW OF SHRUBS NO GREATER THAN 3' ON-CENTER AND WITHIN 5' OF THE PARKING LOT EDGE

**LEGEND**

	EX. PROPERTY LINE
	EX. RIGHT-OF-WAY
	EX. ADJACENT OWNERS
	EX. OVERHEAD ELECTRIC LINE
	EX. WATER LINE
	EX. GAS LINE
	EX. SANITARY SEWER
	EX. STORM SEWER
	PROP. WATER LINE
	PROP. SANITARY SEWER
	PROP. STORM SEWER
	PROP. CANOPY TREE
	PROP. SHRUB



PLANT LIST					
KEY	SCIENTIFIC NAME	COMMON NAME	QUAN.	CAL.	HT.
<b>CANOPY TREES</b>					
ZS	ZELKOVA SERRATA	JAPANESE ZELKOVA	2	2"	8'
<b>SHRUBS</b>					
IC	ILEX CRENATA	JAPANESE HOLLY	31		18"

**CITY OF RALEIGH - PLANS AUTHORIZED FOR CONSTRUCTION**  
ELECTRONIC APPROVAL: THIS APPROVAL IS BEING ISSUED ELECTRONICALLY. THIS APPROVAL IS VALID ONLY UPON THE SIGNATURE OF A CITY OF RALEIGH REVIEW OFFICER BELOW. THE CITY WILL RETAIN A COPY OF THE APPROVED PLANS. ANY WORK AUTHORIZED BY THIS APPROVAL MUST PROCEED IN ACCORDANCE WITH THE PLANS KEPT ON FILE WITH THE CITY. THIS ELECTRONIC APPROVAL MAY NOT BE EDITED ONCE ISSUED. ANY MODIFICATION TO THIS APPROVAL ONCE ISSUED WILL INVALIDATE THIS APPROVAL.

CITY OF RALEIGH DEVELOPMENT APPROVAL \_\_\_\_\_  
RALEIGH WATER REVIEW OFFICER

ALL CONSTRUCTION SHALL BE IN ACCORDANCE WITH ALL TOWN OF ROLESVILLE, CITY OF RALEIGH AND WAKE COUNTY STANDARDS AND SPECIFICATIONS

CALL 48 HOURS BEFORE YOU DIG  
**North Carolina 811**  
www.nc811.org  
NORTH CAROLINA ONE-CALL CENTER  
1-800-632-4949

© 2024 THIS DRAWING SHALL NOT BE REPRODUCED IN WHOLE OR IN PART WITHOUT WRITTEN PERMISSION OF FLM ENGINEERING, INC.



REVISION HISTORY

REV #	DESCRIPTION	DATE	BY

ORIGINAL PLAN SIZE: 24" X 36"

SCALE ADJUSTMENT

THIS BAR IS 1 INCH IN LENGTH ON ORIGINAL DRAWING

IF IT IS NOT 1 INCH ON THIS SHEET, ADJUST YOUR SCALE ACCORDINGLY

SITE CONSTRUCTION PLANS

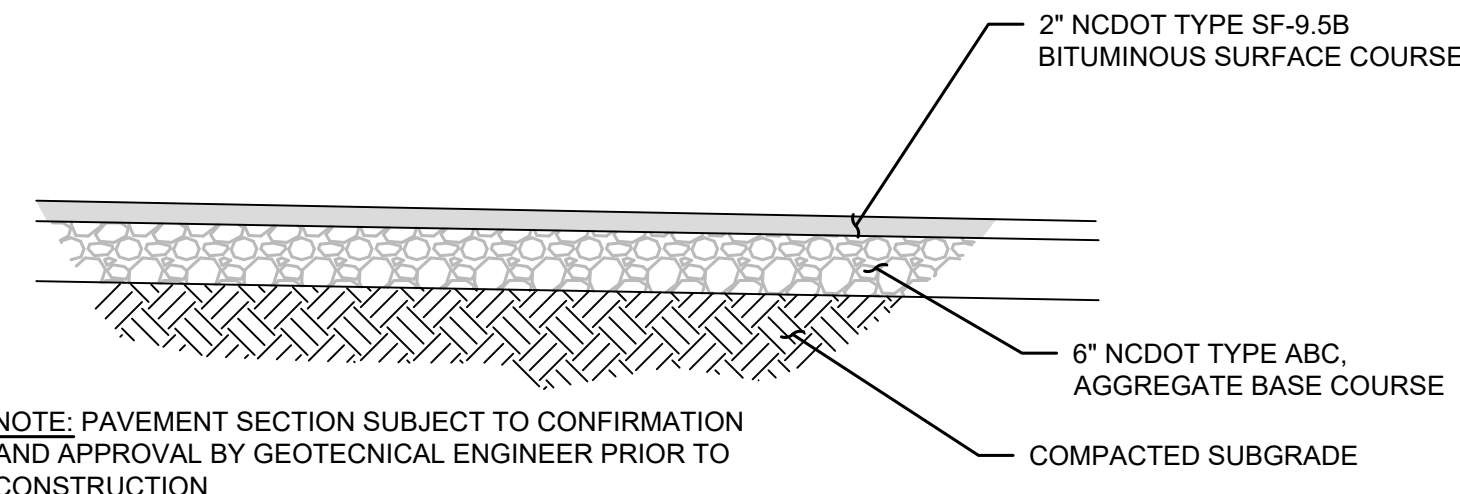
SALON  
 105 S MAIN ST  
 ROLESVILLE, NC 27571

DRAGONFLY INVESTMENTS LLC

DATE:	04-26-2024
SCALE:	AS SHOWN
DESIGNED BY:	FLM
APPROVED BY:	FLM
PROJECT NO.:	23043

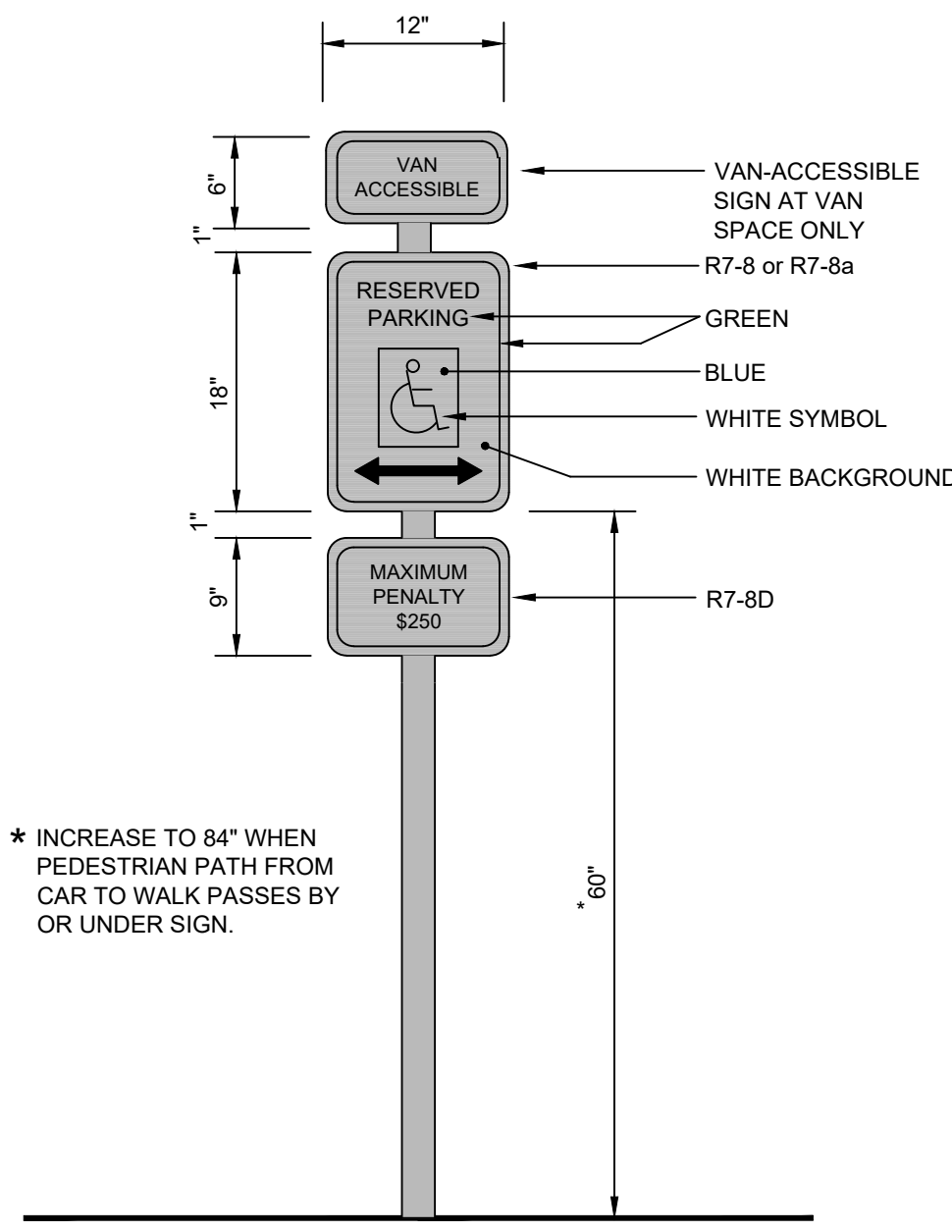
SITE DETAILS

C-7  
 SHEET 7 OF 9



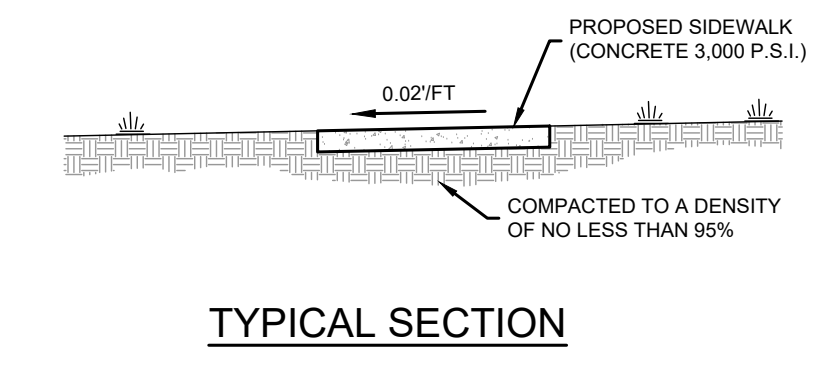
**ASPHALT PARKING PAVEMENT SECTION**  
NO SCALE

NOTE: PAVEMENT SECTION SUBJECT TO CONFIRMATION AND APPROVAL BY GEOTECHNICAL ENGINEER PRIOR TO CONSTRUCTION

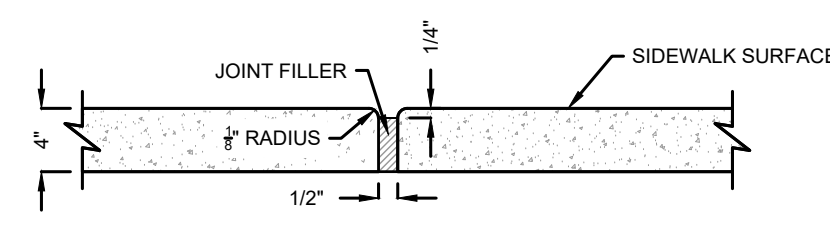


**ADA SIGN AND POST**  
NO SCALE

\* INCREASE TO 84" WHEN PEDESTRIAN PATH FROM CAR TO WALK PASSES BY OR UNDER SIGN.



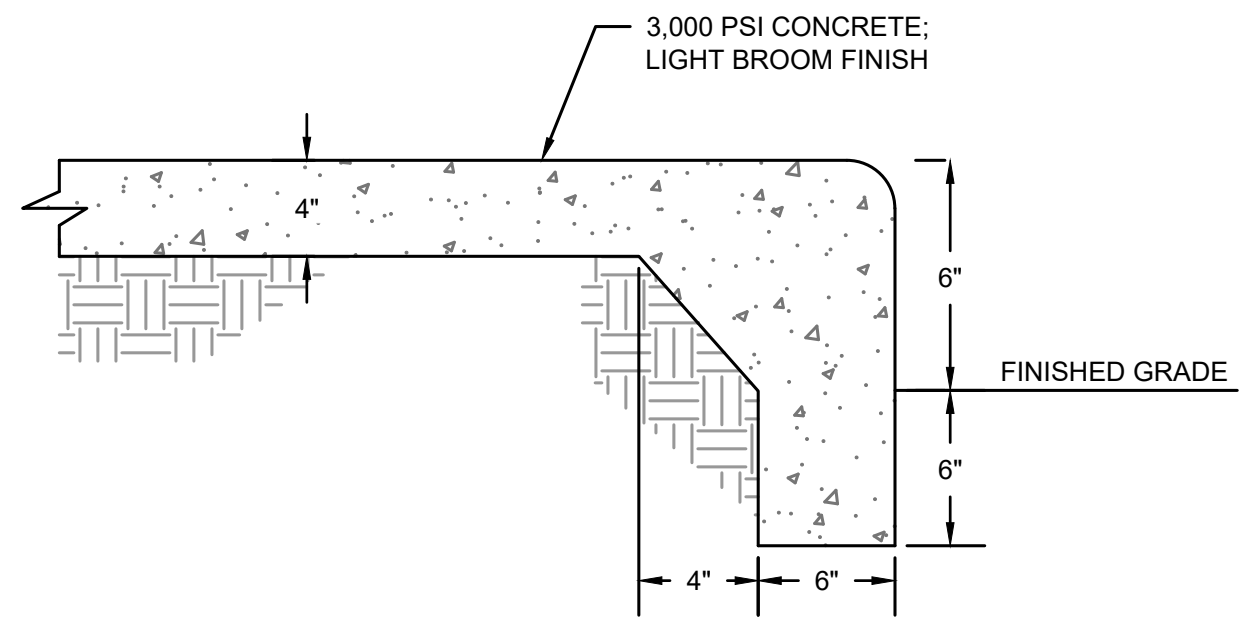
**TYPICAL SECTION**



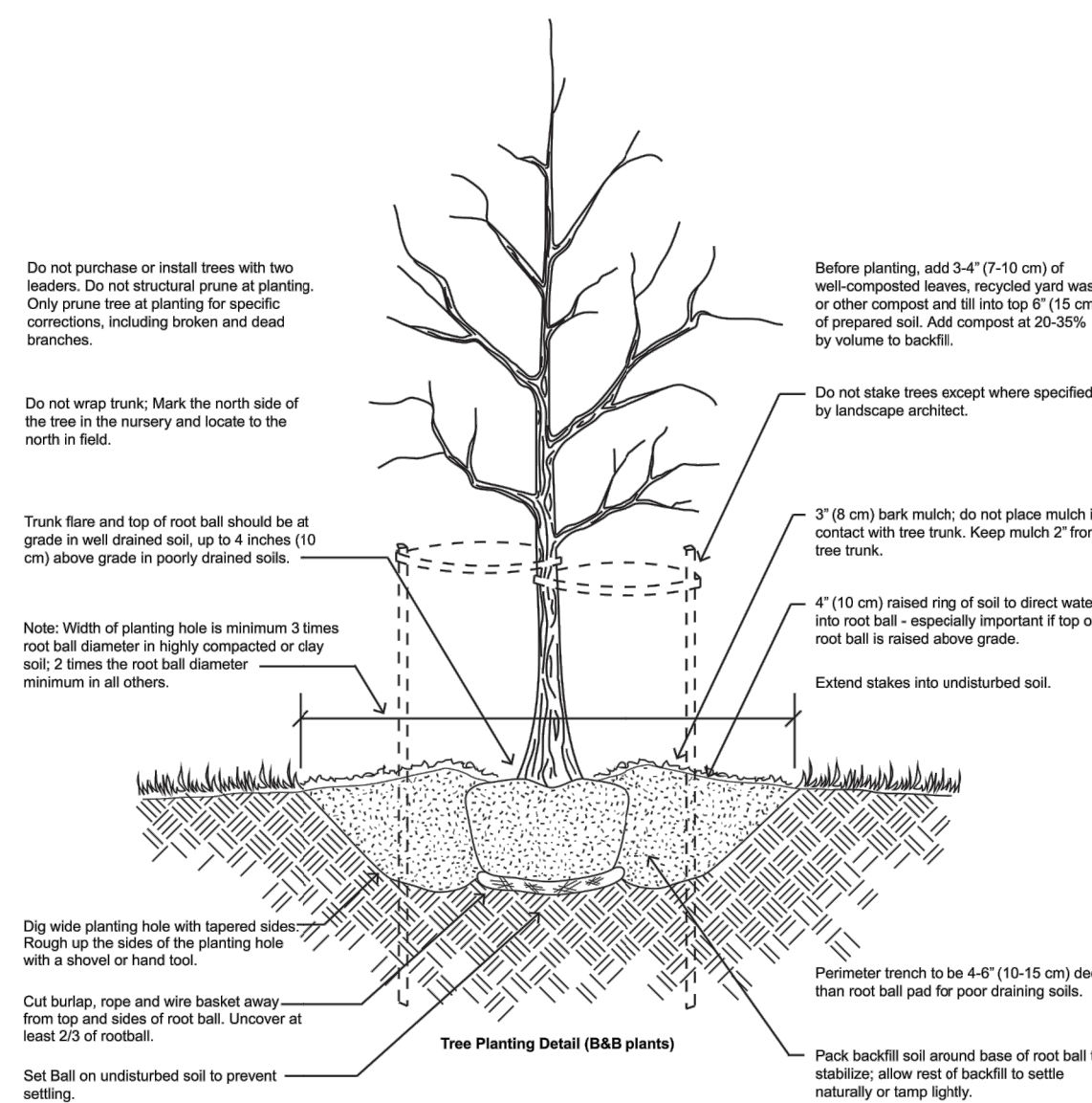
**TRANSVERSE EXPANSION JOINT**

PLAN VIEW

- NOTES:
1. TRANSVERSE EXPANSION JOINTS TO BE A MAXIMUM OF 5 FEET.
  2. ALL CONCRETE TO BE FINISHED WITH CURING COMPOUND.
  3. A 6 INCH DEPTH IS REQUIRED AT LOCATIONS OF DRIVEWAY CROSSINGS, AT STREET INTERSECTIONS (ALONG THE LENGTH OF RADIUS CURB RETURNS), AND IN THE HANDICAP RAMPS.

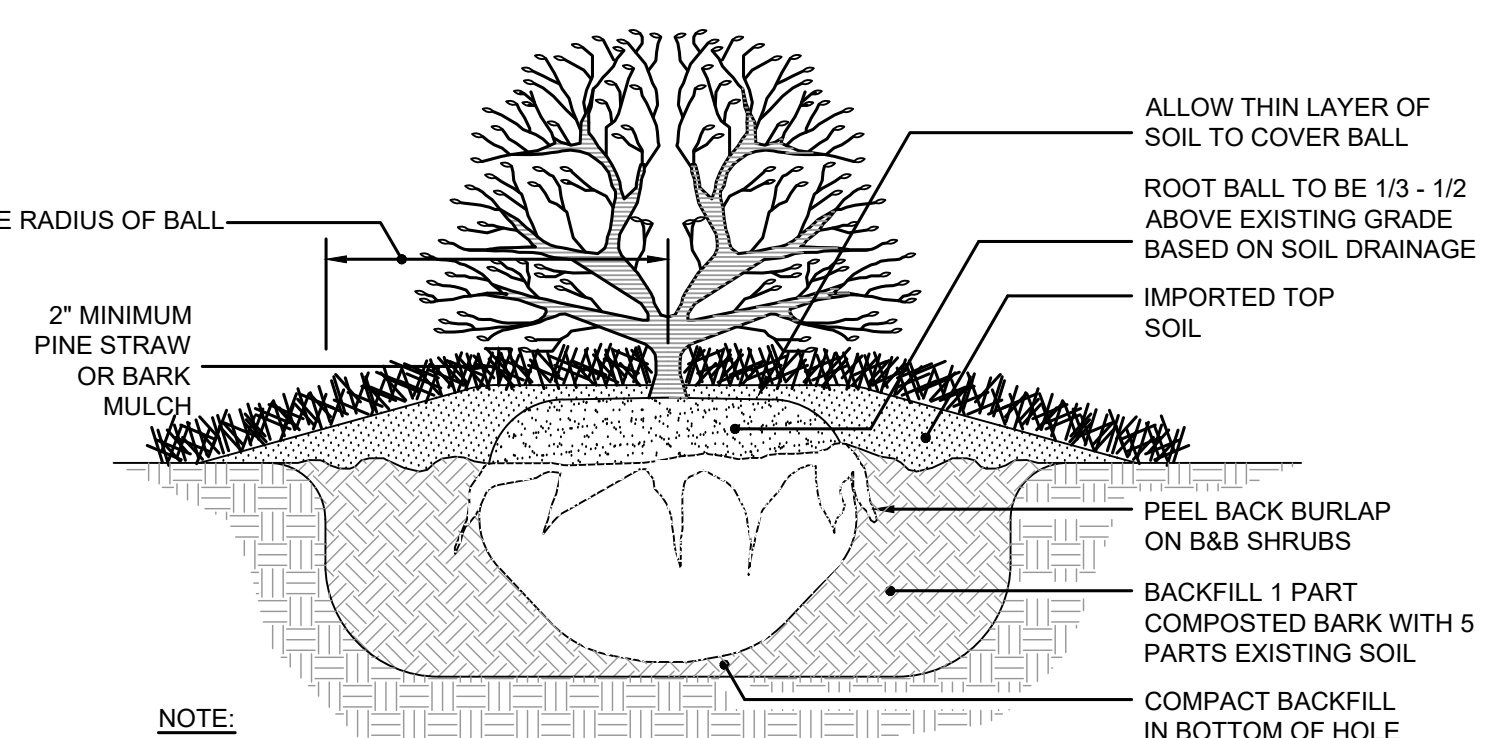


**TURNDOWN SIDEWALK**  
NO SCALE



**TREE PLANTING DETAIL**  
NO SCALE

- Do not purchase or install trees with bare leaders. Do not structural prune at planting. Only prune trees at planting for specific corrections, including broken and dead branches.
- Do not wrap trunk. Mark the north side of the tree in the nursery and locate to the north in field.
- Trunk flare and top of root ball should be at grade in well drained soil, up to 4 inches (10 cm) above grade in poorly drained soils.
- Note: Width of planting hole is minimum 3 times root ball diameter in highly compacted or clay soil; 2 times the root ball diameter minimum in all others.
- Extend stakes into undisturbed soil.
- 3" (8 cm) bark mulch; do not place mulch in contact with tree trunk. Keep mulch 2" from tree trunk.
- 4" (10 cm) raised ring of soil to direct water into root ball - especially important if top of root ball is raised above grade.
- Peel back burlap on B&B shrubs.
- BACKFILL 1 PART COMPOSTED BARK WITH 5 PARTS EXISTING SOIL.
- COMPACT BACKFILL IN BOTTOM OF HOLE.
- 2" MINIMUM PINE STRAW OR BARK MULCH.
- ALLOW THIN LAYER OF SOIL TO COVER BALL.
- ROOT BALL TO BE 1/3 - 1/2 ABOVE EXISTING GRADE BASED ON SOIL DRAINAGE.
- IMPORTED TOP SOIL.
- PEEL BACK BURLAP ON B&B SHRUBS.
- BACKFILL 1 PART COMPOSTED BARK WITH 5 PARTS EXISTING SOIL.
- COMPACT BACKFILL IN BOTTOM OF HOLE.
- NOTE: TWICE RADIUS OF BALL.
1. Where several trees will be planted close together such that they will reach above root space, fill in soil amendments to a depth of 4'-2" (10-15cm) over the entire area.
2. For container grown trees, use fingers or small hand tools to pull the roots out of the outer layer of potting soil; then cut or pull apart any roots extending the perimeter of the container.
3. During the design phase, confirm that water drains out of the soil; use lowered planting hole depth and design alternative drainage system as required.
4. Thoroughly soak the tree root ball and adjacent prepared soil several times during the first month after planting and regularly throughout the following two summers.
5. The planting process is similar for deciduous and evergreen trees.



**TYP. SHRUB/EVERGREEN PLANTING DETAIL**  
NO SCALE

- NOTE:
1. ALL SHRUB/EVERGREEN BEDS SHALL BE RAISED 6" - 8" ABOVE ADJACENT GRADE, AND FILLED WITH SOIL CONDITIONER.
  2. ALL SHRUB/EVERGREEN BEDS IN PARKING ISLANDS ONLY SHALL BE RAISED 12" ABOVE ADJACENT GRADE AND FILLED WITH SOIL CONDITIONER.

**1-Loop Wave Style Bike Rack - 3 Bike Capacity, Black**



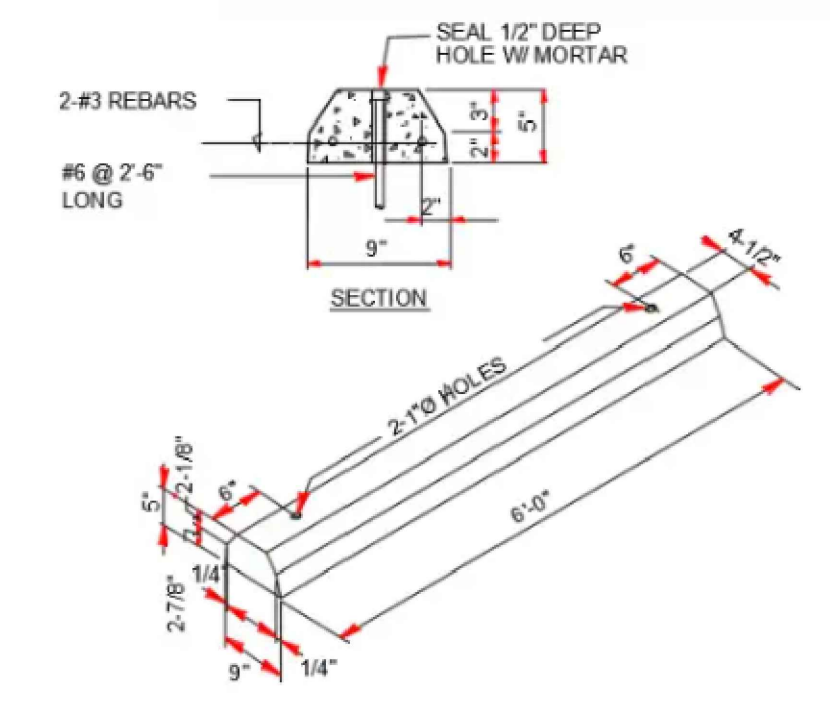
- Upscale stylish look for downtown shopping and business districts.
- For stadiums, parks and athletic fields.
  - 10-gauge steel with attractive powder coating.
  - 2 3/8" diameter bar.
  - Mounting hardware included.

Q. More Images

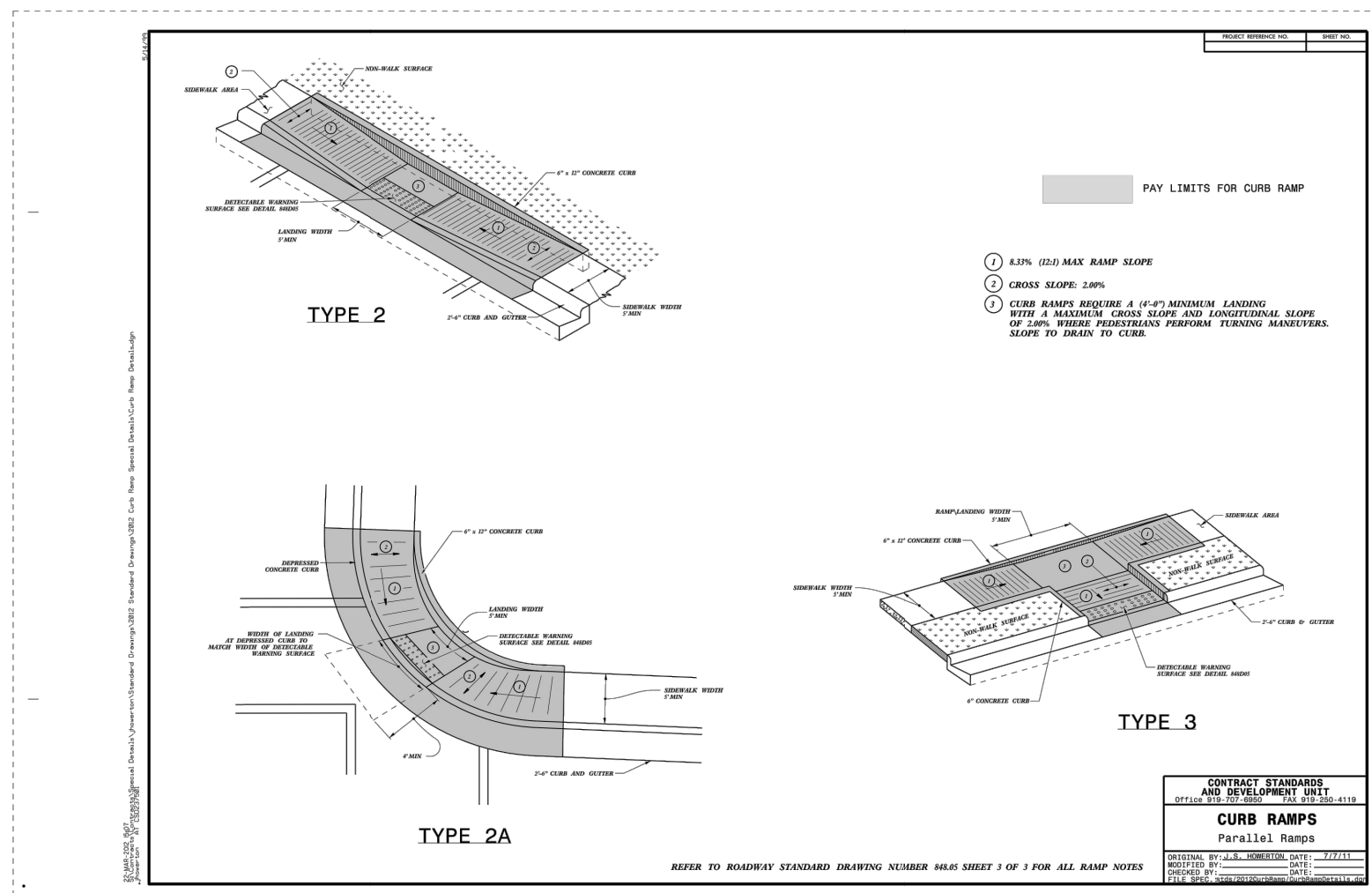
SPECIFY COLOR:

MODEL NO.	DESCRIPTION	SIZE L x W x H	BIKE CAPACITY	WT. (LBS.)	PRICE EACH 1	PRICE EACH 3+	COLOR	IN STOCK SHIPS TODAY
H-2892BL	1-Loop	22 x 2 1/2 x 34"	3	27	\$230	\$220	Black - <input type="checkbox"/>	<input type="checkbox"/> ADD

**BIKE RACK DETAIL**  
NO SCALE



**PRE-CAST CONCRETE WHEEL STOP DETAIL**  
NO SCALE



**CURE RAMPS**  
Parallel Ramps

CALL 48 HOURS BEFORE YOU DIG

NORTH CAROLINA ONE-CALL CENTER  
 1-800-632-4949

**CITY OF RALEIGH - PLANS AUTHORIZED FOR CONSTRUCTION**

ELECTRONIC APPROVAL: THIS APPROVAL IS BEING ISSUED ELECTRONICALLY. THIS APPROVAL IS VALID ONLY UPON THE SIGNATURE OF A CITY OF RALEIGH REVIEW OFFICER BELOW. THE CITY WILL RETAIN A COPY OF THE APPROVED PLANS. ANY WORK AUTHORIZED BY THIS APPROVAL MUST PROCEED IN ACCORDANCE WITH THE PLANS KEPT ON FILE WITH THE CITY. THIS ELECTRONIC APPROVAL MAY NOT BE EDITED ONCE ISSUED. ANY MODIFICATION TO THIS APPROVAL ONCE ISSUED WILL INVALIDATE THIS APPROVAL.

CITY OF RALEIGH DEVELOPMENT APPROVAL \_\_\_\_\_ RALEIGH WATER REVIEW OFFICER \_\_\_\_\_

ALL CONSTRUCTION SHALL BE IN ACCORDANCE WITH ALL TOWN OF ROLESVILLE, CITY OF RALEIGH AND WAKE COUNTY STANDARDS AND SPECIFICATIONS



REVISION HISTORY

REV #	DESCRIPTION	DATE	BY

ORIGINAL PLAN SIZE: 24" X 36"

SCALE ADJUSTMENT	
THIS BAR IS 1 INCH IN LENGTH ON ORIGINAL DRAWING	
0	1"
IF IT IS NOT 1 INCH ON THIS SHEET, ADJUST YOUR SCALE ACCORDINGLY	

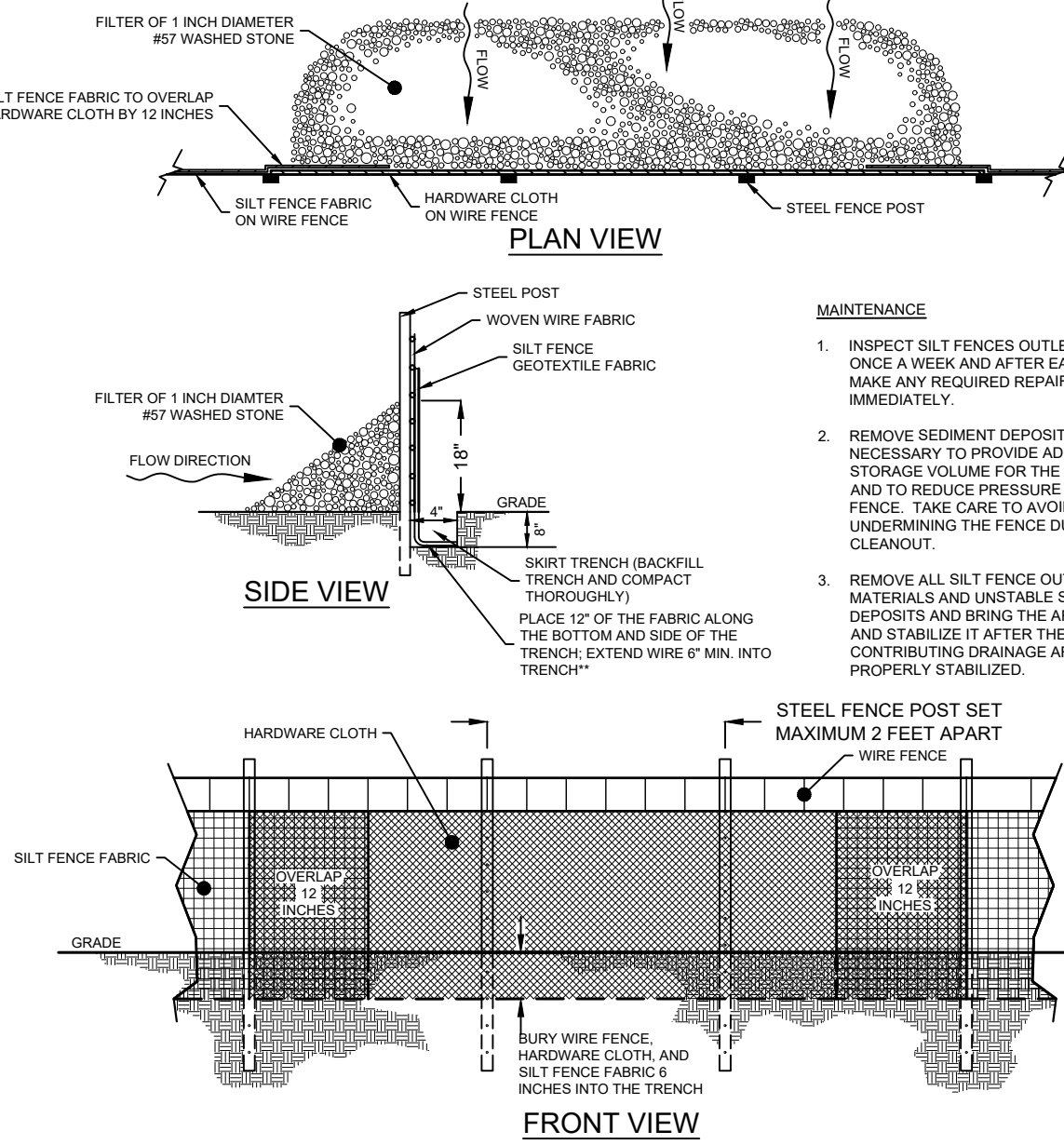
SITE CONSTRUCTION PLANS  
SALON  
105 S MAIN ST  
ROLESVILLE, NC 27571

DRAGONFLY INVESTMENTS LLC

DATE:	04-26-2024
SCALE:	AS SHOWN
DESIGNED BY:	FLM
APPROVED BY:	FLM
PROJECT NO.:	23043

EROSION & SEDIMENT CONTROL DETAILS

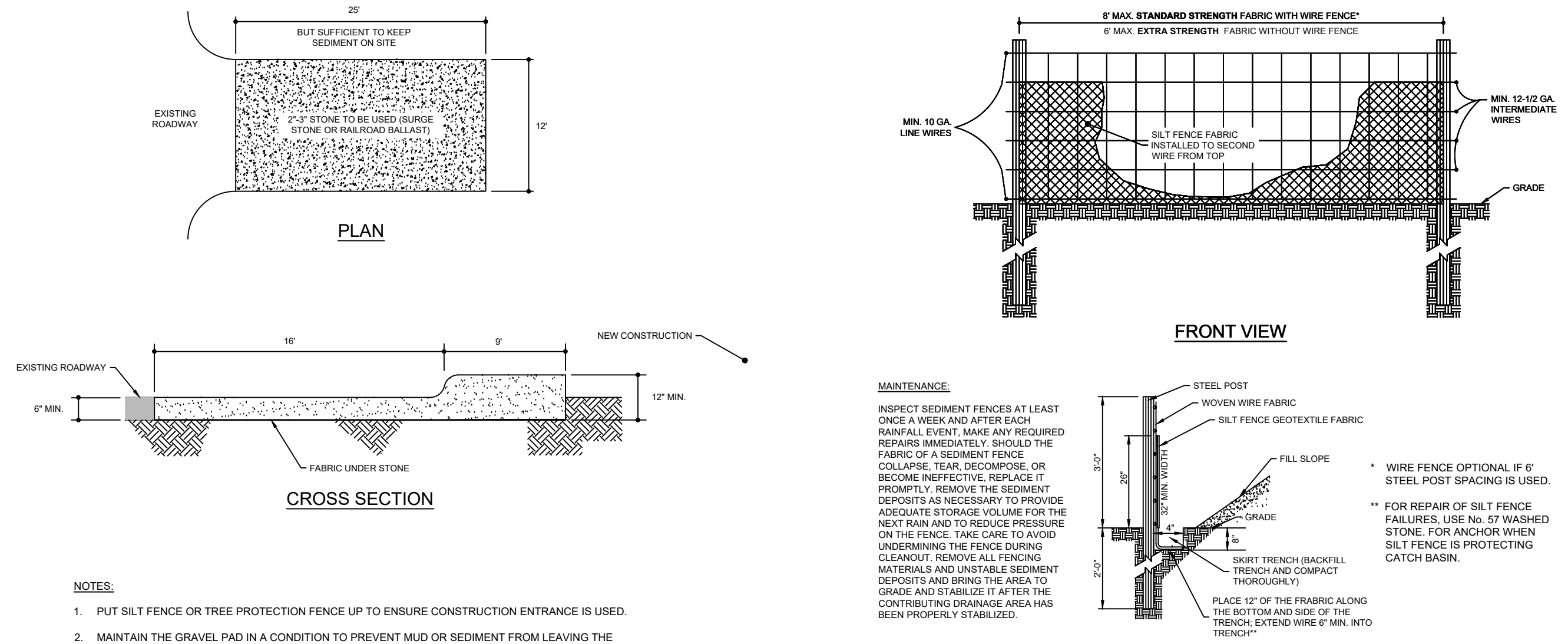
C-8  
SHEET 8 OF 9



- MAINTENANCE**
1. INSPECT SILT FENCES OUTLETS AT LEAST ONCE A WEEK AND AFTER EACH RAINFALL. MAKE ANY REQUIRED REPAIRS IMMEDIATELY.
  2. REMOVE SEDIMENT DEPOSITS AS NECESSARY TO PROVIDE ADEQUATE STORAGE VOLUME FOR THE NEXT RAIN AND TO REDUCE PRESSURE ON THE FENCE. TAKE CARE TO AVOID UNDERMINING THE FENCE DURING CLEANOUT.
  3. REMOVE ALL SILT FENCE OUTLET MATERIALS AND UNSTABLE SEDIMENT DEPOSITS AND BRING THE AREA TO GRADE AND STABILIZE IT AFTER THE CONTRIBUTING DRAINAGE AREA HAS BEEN PROPERLY STABILIZED.

- NOTES**
1. INSPECT SILT FENCES OUTLETS AT LEAST ONCE A WEEK AND AFTER EACH RAINFALL. MAKE ANY REQUIRED REPAIRS IMMEDIATELY.
  2. REMOVE SEDIMENT DEPOSITS AS NECESSARY TO PROVIDE ADEQUATE STORAGE VOLUME FOR THE NEXT RAIN AND TO REDUCE PRESSURE ON THE FENCE. TAKE CARE TO AVOID UNDERMINING THE FENCE DURING CLEANOUT.
  3. REMOVE ALL SILT FENCE OUTLET MATERIALS AND UNSTABLE SEDIMENT DEPOSITS AND BRING THE AREA TO GRADE AND STABILIZE IT AFTER THE CONTRIBUTING DRAINAGE AREA HAS BEEN PROPERLY STABILIZED.

SILT FENCE OUTLET  
NO SCALE



- MAINTENANCE**
- INSPECT SEDIMENT FENCES AT LEAST ONCE A WEEK AND AFTER EACH RAINFALL EVENT. MAKE ANY REQUIRED REPAIRS IMMEDIATELY. SHOULD THE FABRIC OF A SEDIMENT FENCE COLLAPSE, TEAR, DECOMPOSE, OR BECOME INEFFECTIVE, REPLACE IT PROMPTLY. REMOVE THE SEDIMENT DEPOSITS AS NECESSARY TO PROVIDE ADEQUATE STORAGE VOLUME FOR THE NEXT RAIN AND TO REDUCE PRESSURE ON THE FENCE. TAKE CARE TO AVOID UNDERMINING THE FENCE DURING CLEANOUT. REMOVE ALL FENCING MATERIALS AND UNSTABLE SEDIMENT DEPOSITS AND BRING THE AREA TO GRADE AND STABILIZE IT AFTER THE CONTRIBUTING DRAINAGE AREA HAS BEEN PROPERLY STABILIZED.

- NOTES**
1. USE SILT FENCE ONLY WHEN DRAINAGE AREA DOES NOT EXCEED 1/4 ACRE AND NEVER IN AREAS OF CONCENTRATED FLOW.
  2. END OF SILT FENCE NEEDS TO BE TURNED UPHILL.
  3. INSPECT SILT FENCES AT LEAST ONCE A WEEK AND AFTER EACH RAINFALL. MAKE ANY REQUIRED REPAIRS IMMEDIATELY.
  4. REMOVE SEDIMENT DEPOSITS AS NECESSARY TO PROVIDE ADEQUATE STORAGE VOLUME FOR THE NEXT RAIN AND TO REDUCE PRESSURE ON THE FENCE. TAKE CARE TO AVOID UNDERMINING THE FENCE DURING CLEANOUT.
  5. REMOVE ALL FENCING MATERIALS AND UNSTABLE SEDIMENT DEPOSITS AND BRING THE AREA TO GRADE AND STABILIZE IT AFTER THE CONTRIBUTING DRAINAGE AREA HAS BEEN PROPERLY STABILIZED.

SILT FENCE  
NO SCALE

- NOTES**
1. PUT SILT FENCE OR TREE PROTECTION FENCE UP TO ENSURE CONSTRUCTION ENTRANCE IS USED.
  2. MAINTAIN THE GRAVEL PAD IN A CONDITION TO PREVENT MUD OR SEDIMENT FROM LEAVING THE CONSTRUCTION SITE. THIS MAY REQUIRE PERIODIC TOPDRESSING WITH 2 INCH STONE. IMMEDIATELY REMOVE ALL OBJECTIONABLE MATERIALS SPILLED, WASHED, OR TRACKED ONTO PUBLIC ROADWAYS.

GRAVEL CONSTRUCTION ENTRANCE  
NO SCALE

FOR SHOULDERS, SIDE DITCHES, SLOPES (MAX 3:1):		
DATE	TYPE	PLANTING RATE
AUG 15-NOV 1	TALL FESCUE	300 LBS/ACRE
NOV 1-MAR 1	TALL FESCUE & ABRUZZI RYE	300 LBS/ACRE
MAR 1-APR 15	TALL FESCUE	300 LBS/ACRE
APR 15-JUN 30	HULLED COMMON BERMUDAGRASS	25 LBS/ACRE
JUL 1-AUG 15	TALL FESCUE AND BROWNTOP MILLET OR SORGHUM-SUDAN HYBRIDS ***	125 LBS/ACRE (TALL FESCUE); 35 LBS/ACRE (BROWNTOP MILLET); 30 LBS/ACRE (SORGHUM-SUDAN HYBRIDS) ***

FOR SHOULDERS, SIDE DITCHES, SLOPES (3:1 TO 2:1):		
DATE	TYPE	PLANTING RATE
MAR 1 - JUN 1	SERICA LESPEDEZA (SCARIFIED) AND USE THE FOLLOWING COMBINATIONS:	50 LBS/ACRE
MAR 1 - APR 15	ADD TALL FESCUE	120 LBS/ACRE
MAR 1 - JUN 30	OR ADD WEeping LOVE GRASS	10 LBS/ACRE
MAR 1 - JUN 30	OR ADD HULLED COMMON BERMUDAGRASS	25 LBS/ACRE
JUN 1 - SEPT 1	TALL FESCUE AND BROWNTOP MILLET OR SORGHUM-SUDAN HYBRIDS ***	120 LBS/ACRE (TALL FESCUE); 35 LBS/ACRE (BROWNTOP MILLET); 30 LBS/ACRE (SORGHUM-SUDAN HYBRIDS) ***
SEPT 1 - MAR 1	SERICA LESPEDEZA (UNSCARIFIED) AND TALL FESCUE	70 LBS/ACRE (SERICA LESPEDEZA); 120 LBS/ACRE (TALL FESCUE)
NOV 1 - MAR 1	AND ABRUZZI RYE	25 LBS/ACRE

MIXTURE	
AGRICULTURAL LIMESTONE	3 TONS/ACRE (3 TONS/ACRE IN CLAY SOILS)
FERTILIZER	1,000 LBS/ACRE - 10-10-10
SUPERPHOSPHATE	500 LBS/ACRE - 20% ANALYSIS
MULCH	2 TONS/ACRE - SMALL GRAIN STRAW
ANCHOR	ASPHALT EMULSION TT 400 GALS/ACRE

**FOR LATE WINTER AND EARLY SPRING:**

**SEEDING MIXTURE:** RYE (GRAIN) - 120 LBS/ACRE ANNUAL LESPEDEZA\* (KORE IN PIEDMONT AND COASTAL PLAIN, KOREAN IN MOUNTAINS) - 50 LBS/ACRE

\*OMT ANNUAL LESPEDEZA WHEN DURATION OF TEMPORARY COVER IS NOT TO EXTEND BEYOND JUNE

**SEEDING DATES:** MOUNTAINS: ABOVE 2500 FEET: FEB. 15 - MAY 15  
BELOW 2500 FEET: FEB. 1 - MAY 1  
PIEDMONT: JAN. 1 - MAY 1  
COASTAL PLAIN: DEC. 1 - APR. 15

**SOIL AMENDMENTS:** FOLLOW RECOMMENDATIONS OF SOIL TESTS OR APPLY 3 TONS/ACRE (6,000 LBS/ACRE) GROUND AGRICULTURAL LIMESTONE AND 750 LBS/ACRE 10-10-10 FERTILIZER

**MULCH:** APPLY 4,000 LBS/ACRE STRAW. ANCHOR STRAW BY TACKLING WITH 400 GALLONS/ACRE OF ASPHALT EMULSION, NETTING, OR A MULCH ANCHORING TOOL.

**MAINTENANCE:** REFERTILIZE IF GROWTH IS NOT FULLY ADEQUATE. RESEED, REFERTILIZE, AND MULCH IMMEDIATELY FOLLOWING EROSION OR OTHER DAMAGE.

**FOR SUMMER:**

**SEEDING MIXTURE:** GERMAN MILLET\*\* - 40 LBS/ACRE

\*\*IN THE PIEDMONT AND MOUNTAINS, A SMALL-STEMMED SUDANGRASS MAY BE SUBSTITUTED AT A RATE OF 50 LBS/ACRE

**SEEDING DATES:** MOUNTAINS: MAY 15 - AUG. 15  
PIEDMONT: MAY 1 - AUG. 15  
COASTAL PLAIN: APR. 15 - AUG. 15

**SOIL AMENDMENTS:** FOLLOW RECOMMENDATIONS OF SOIL TESTS OR APPLY 3 TONS/ACRE (6,000 LBS/ACRE) GROUND AGRICULTURAL LIMESTONE AND 1,000 LBS/ACRE 10-10-10 FERTILIZER

**MULCH:** APPLY 4,000 LBS/ACRE STRAW. ANCHOR STRAW BY TACKLING WITH 400 GALLONS/ACRE OF ASPHALT EMULSION, NETTING, OR A MULCH ANCHORING TOOL.

**MAINTENANCE:** REFERTILIZE IF GROWTH IS NOT FULLY ADEQUATE. RESEED, REFERTILIZE, AND MULCH IMMEDIATELY FOLLOWING EROSION OR OTHER DAMAGE.

**FOR FALL:**

**SEEDING MIXTURE:** RYE (GRAIN) - 120 LBS/ACRE

**SEEDING DATES:** MOUNTAINS: AUG. 15 - DEC. 15  
COASTAL PLAIN AND PIEDMONT: AUG. 15 - DEC. 30

**SOIL AMENDMENTS:** FOLLOW RECOMMENDATIONS OF SOIL TESTS OR APPLY 3 TONS/ACRE (6,000 LBS/ACRE) GROUND AGRICULTURAL LIMESTONE AND 1,000 LBS/ACRE 10-10-10 FERTILIZER

**MULCH:** APPLY 4,000 LBS/ACRE STRAW. ANCHOR STRAW BY TACKLING WITH 400 GALLONS/ACRE OF ASPHALT EMULSION, NETTING, OR A MULCH ANCHORING TOOL.

**MAINTENANCE:** REPAIR AND REFERTILIZE DAMAGED AREAS IMMEDIATELY. TOPDRESS WITH 50 LBS/ACRE OF NITROGEN IN MARCH IF IT IS NECESSARY TO EXTEND TEMPORARY COVER BEYOND JUNE 15. OVERSEED WITH 50 LBS/ACRE KORE (PIEDMONT AND COASTAL PLAIN) OR KOREAN (MOUNTAINS) LESPEDEZA IN LATE FEBRUARY OR EARLY MARCH.

**SEEDBED PREPARATION:**

LIMING - APPLY LIME ACCORDING TO SOIL TEST RECOMMENDATIONS. IF THE PH (ACIDITY) OF THE SOIL IS NOT KNOWN, AN APPLICATION OF GROUND AGRICULTURAL LIMESTONE AT THE 6.106 RATE OF 1 TO 1 1/2 TONS/ACRE ON COARSE-TEXTURED SOILS AND 2-3 TONS/ACRE ON FINE-TEXTURED SOILS IS USUALLY SUFFICIENT. APPLY LIME UNIFORMLY AND INCORPORATE INTO THE TOP 4-6 INCHES OF SOIL. SOILS WITH A PH OF 6 OR HIGHER NEED NOT BE LIMED.

FERTILIZER - BASE APPLICATION RATES ON SOIL TESTS. WHEN THESE ARE NOT POSSIBLE, APPLY A 10-10-10 GRADE FERTILIZER AT 700-1,000 LBS/ACRE. BOTH FERTILIZER AND LIME SHOULD BE INCORPORATED INTO THE TOP 4-8 INCHES OF SOIL. IF A HYDRAULIC SEEDER IS USED, DO NOT MIX SEED AND FERTILIZER MORE THAN 30 MINUTES BEFORE APPLICATION.

SURFACE ROUGHENING - IF RECENT TILLAGE OPERATIONS HAVE RESULTED IN A LOOSE SURFACE, ADDITIONAL ROUGHENING MAY NOT BE REQUIRED, EXCEPT TO BREAK UP LARGE CLODS. IF RAINFALL CAUSES THE SURFACE TO BECOME SEALED OR CRUSTED, LOOSEN IT JUST PRIOR TO SEEDING BY DISKING, PLOWING, HARROWING, OR OTHER SUITABLE METHODS. GROOVE OR FURROW SLOPES STEEPER THAN 3:1 ON THE CONTOUR BEFORE SEEDING (PRACTICE 6.03, SURFACE ROUGHENING).

TEMPORARY SEEDING SCHEDULE  
NO SCALE

PERMANENT SEEDING SCHEDULE  
NO SCALE

\*APPLY: AGRICULTURAL LIMESTONE: 2 TONS/ACRE MINIMUM OR PER SOIL TEST  
FERTILIZER - 10-10-10 ANALYSIS @ 1,000 LBS/ACRE  
SUPERPHOSPHATE - 500 LBS/ACRE OF 20% ANALYSIS  
MULCH - 2 TONS (+/- 80 BALES) STRAW/ACRE  
ANCHOR - USE LIQUID ASPHALT @ 400 GALS/ACRE OR EMULSIFIED ASPHALT @ 400 GALS/ACRE

CALL 48 HOURS BEFORE  
YOU DIG

NORTH CAROLINA  
ONE-CALL CENTER  
1-800-632-4949

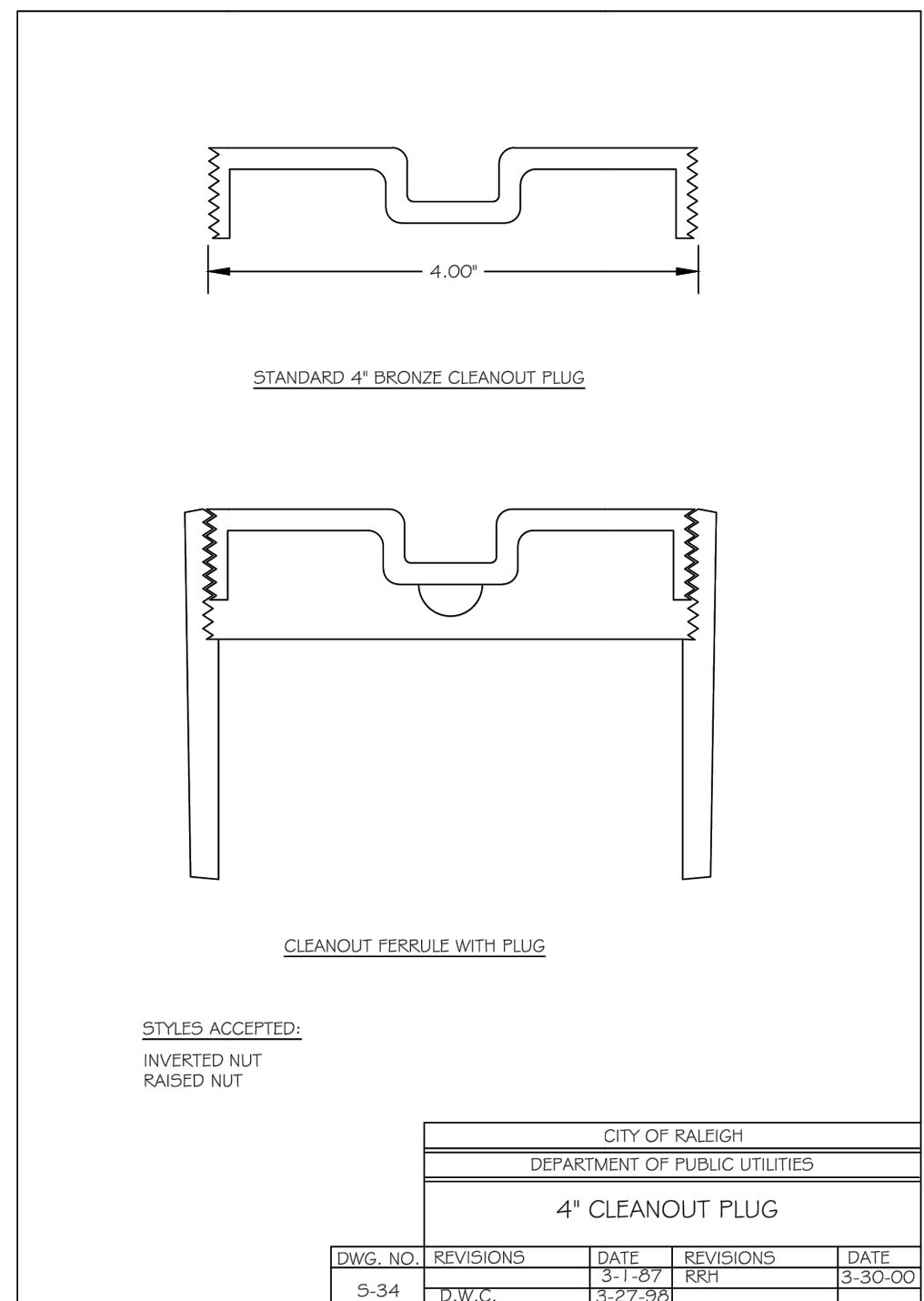
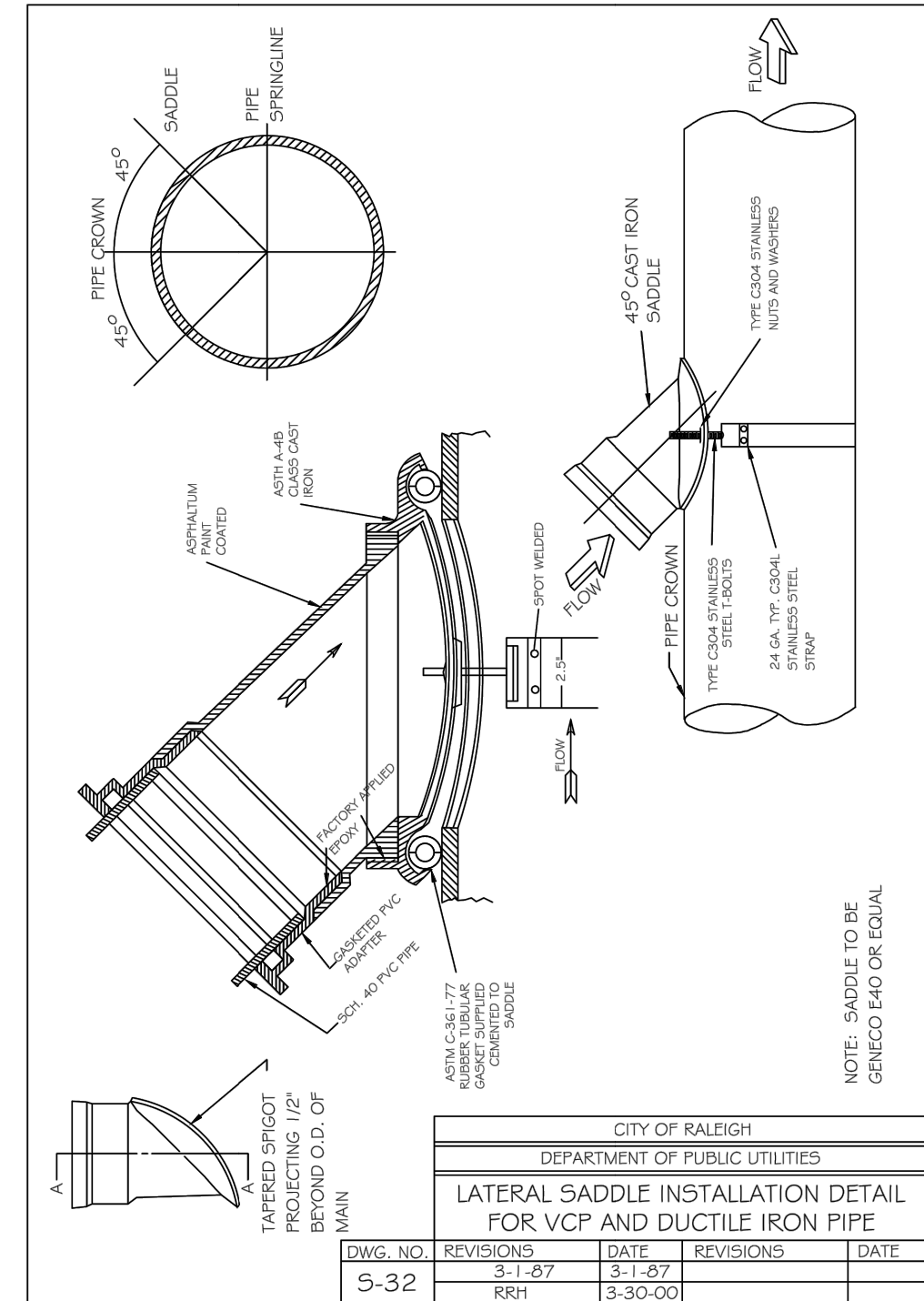
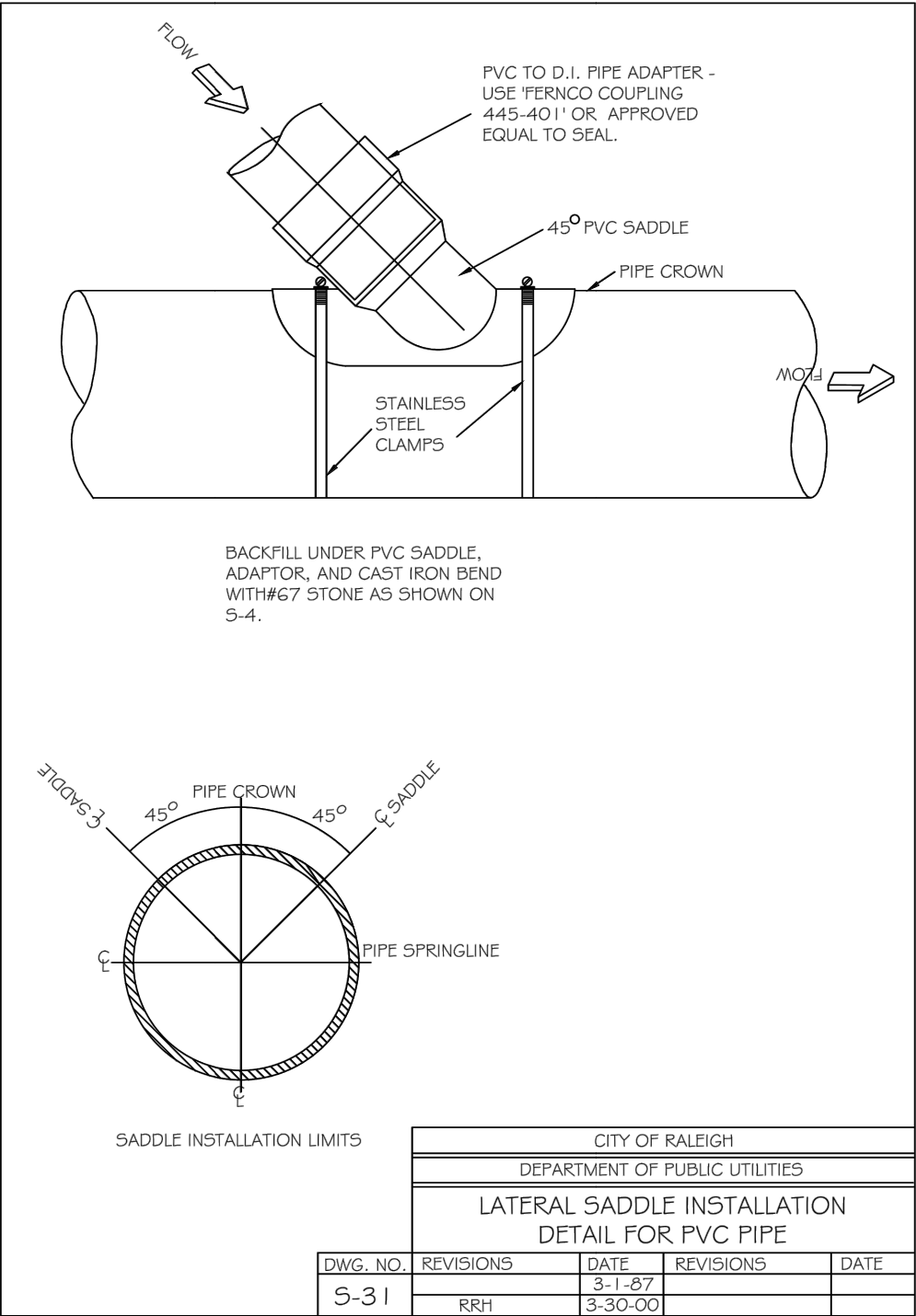
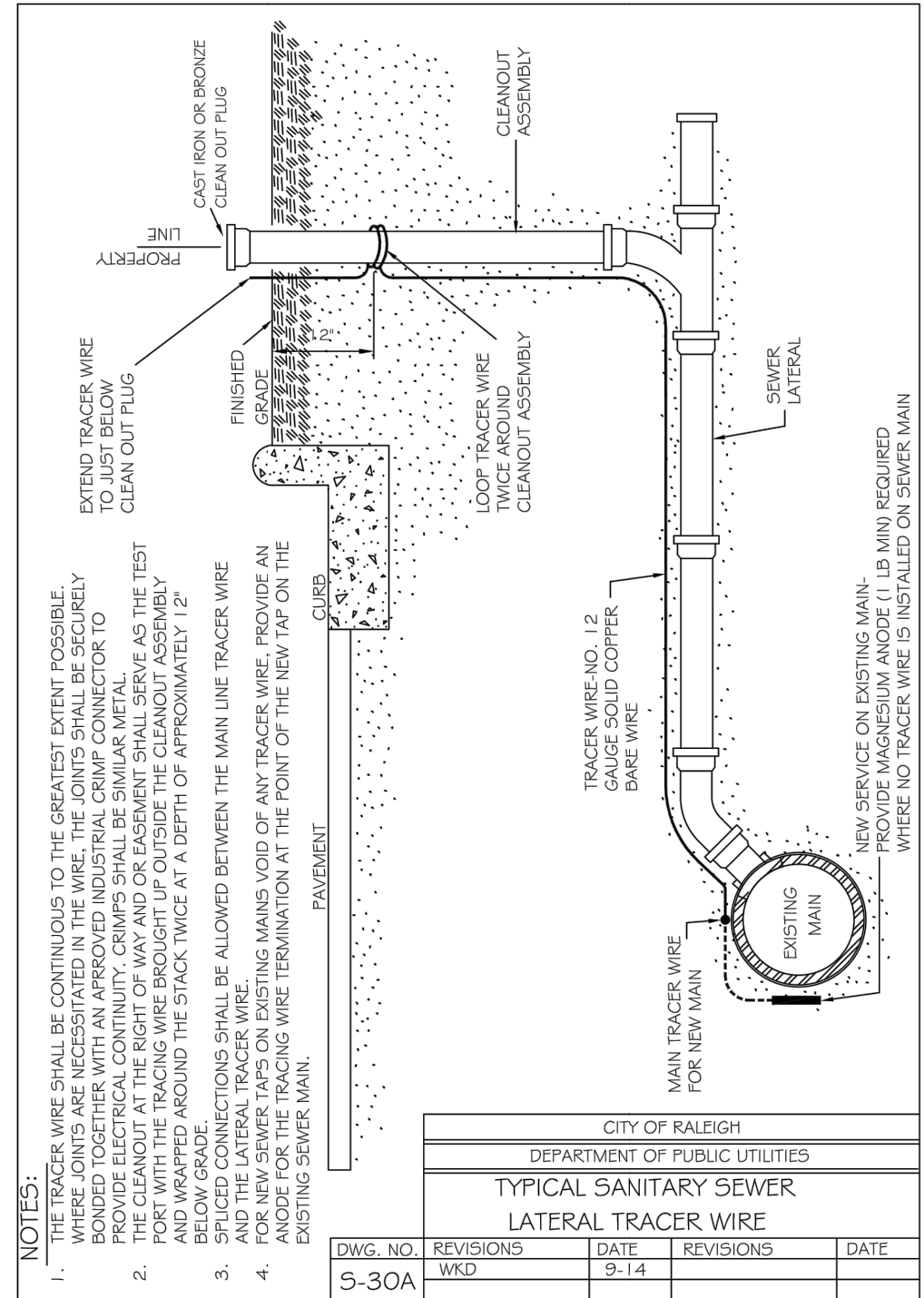
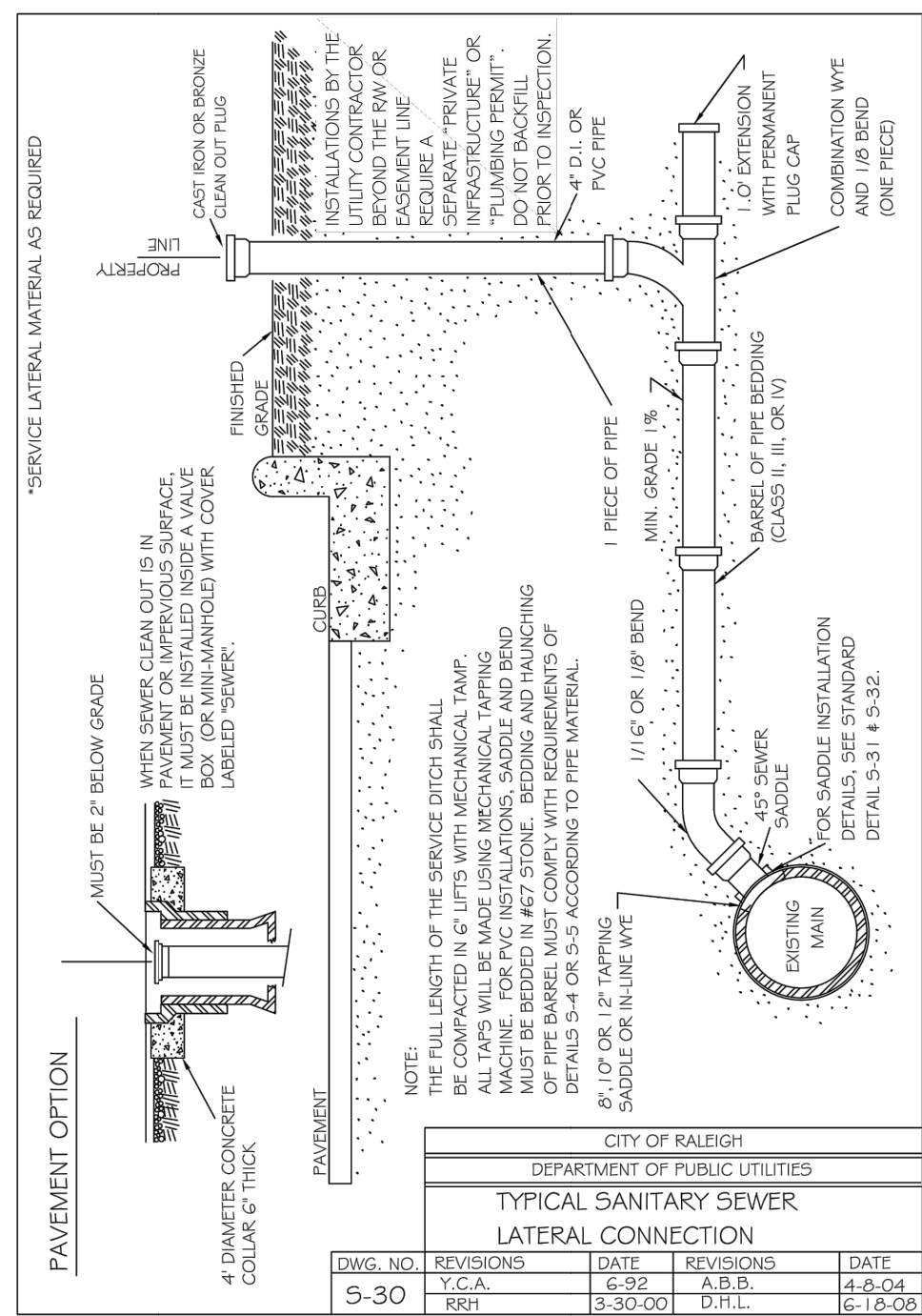
CITY OF RALEIGH - PLANS AUTHORIZED FOR CONSTRUCTION

ELECTRONIC APPROVAL: THIS APPROVAL IS BEING ISSUED ELECTRONICALLY. THIS APPROVAL IS VALID ONLY UPON THE SIGNATURE OF A CITY OF RALEIGH REVIEW OFFICER BELOW. THE CITY WILL RETAIN A COPY OF THE APPROVED PLANS. ANY WORK AUTHORIZED BY THIS APPROVAL MUST PROCEED IN ACCORDANCE WITH THE PLANS KEPT ON FILE WITH THE CITY. THIS ELECTRONIC APPROVAL MAY NOT BE EDITED ONCE ISSUED. ANY MODIFICATION TO THIS APPROVAL ONCE ISSUED WILL INVALIDATE THIS APPROVAL.

CITY OF RALEIGH DEVELOPMENT APPROVAL \_\_\_\_\_  
RALEIGH WATER REVIEW OFFICER \_\_\_\_\_

ALL CONSTRUCTION SHALL BE IN ACCORDANCE WITH ALL TOWN OF ROLESVILLE, CITY OF RALEIGH AND WAKE COUNTY STANDARDS AND SPECIFICATIONS





POST OFFICE BOX 91727  
RALEIGH, NORTH CAROLINA 27675  
PHONE: 919.610.1051  
FIRM NC LICENSE NUMBER C-4222



REVISION HISTORY

REV #	DESCRIPTION	DATE	BY

ORIGINAL PLAN SIZE: 24" X 36"

SCALE ADJUSTMENT  
THIS BAR IS 1 INCH IN LENGTH ON ORIGINAL DRAWING  
IF IT IS NOT 1 INCH ON THIS SHEET, ADJUST YOUR SCALE ACCORDINGLY

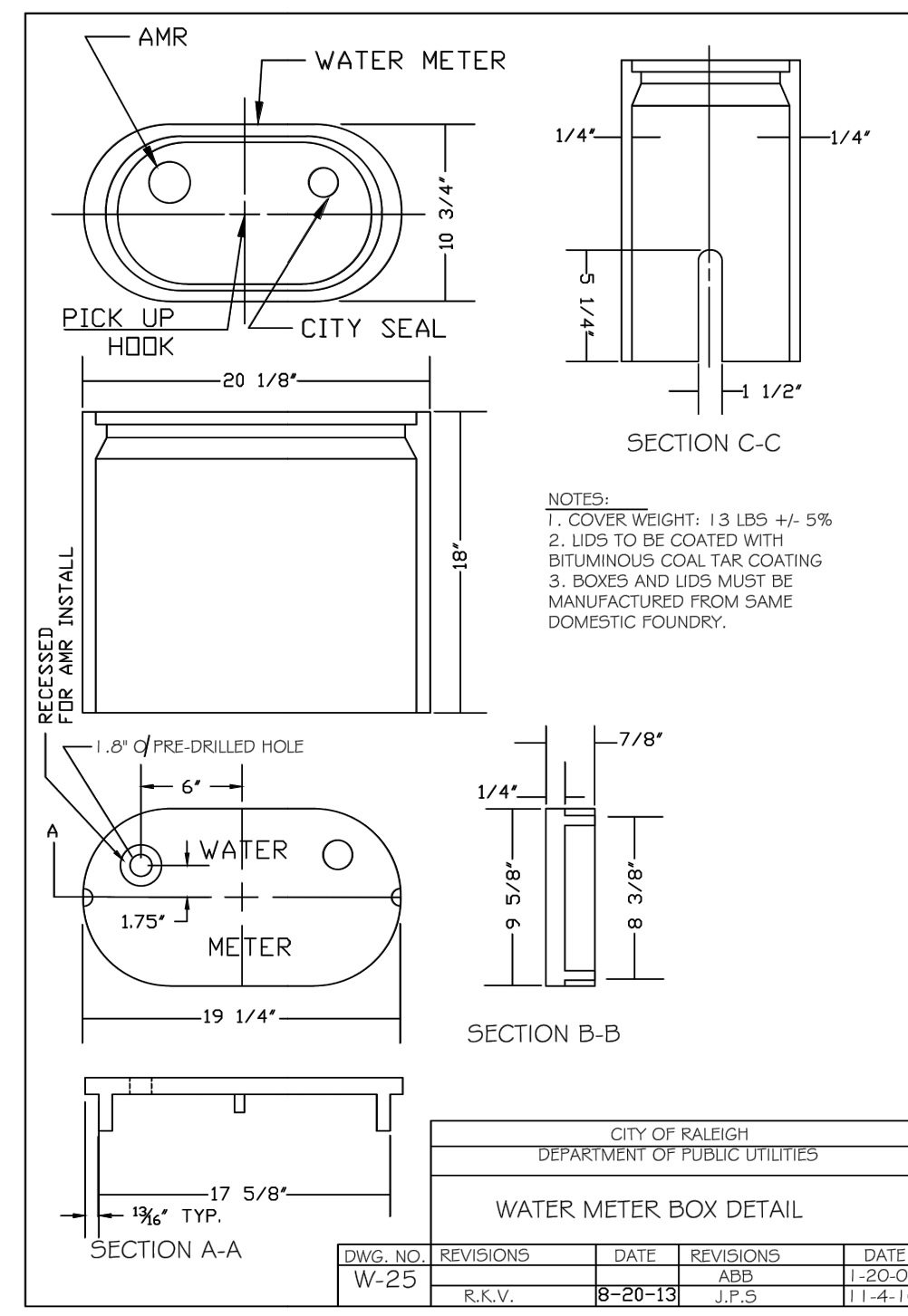
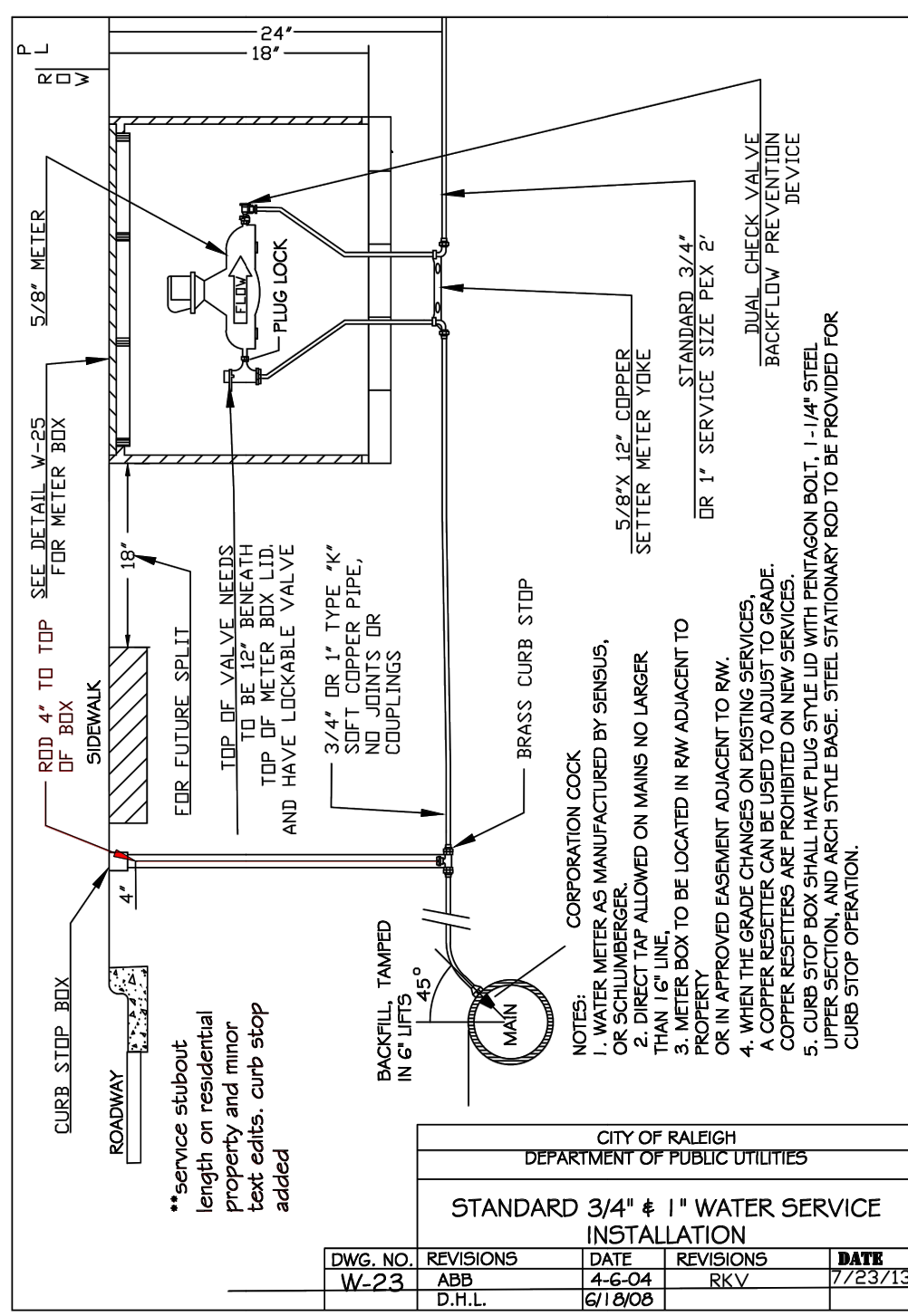
SITE CONSTRUCTION PLANS  
SALON  
105 S MAIN ST  
ROLESVILLE, NC 27571

DRAGONFLY INVESTMENTS LLC

DATE: 04-26-2024  
SCALE: AS SHOWN  
DESIGNED BY: FLM  
APPROVED BY: FLM  
PROJECT NO.: 23043

WATER & SEWER DETAILS

C-9  
SHEET 9 OF 9



CALL 48 HOURS BEFORE YOU DIG  
North Carolina 811  
www.nc811.org  
NORTH CAROLINA ONE-CALL CENTER  
1-800-632-4949

CITY OF RALEIGH - PLANS AUTHORIZED FOR CONSTRUCTION  
ELECTRONIC APPROVAL: THIS APPROVAL IS BEING ISSUED ELECTRONICALLY. THIS APPROVAL IS VALID ONLY UPON THE SIGNATURE OF A CITY OF RALEIGH REVIEW OFFICER BELOW. THE CITY WILL RETAIN A COPY OF THE APPROVED PLANS. ANY WORK AUTHORIZED BY THIS APPROVAL MUST PROCEED IN ACCORDANCE WITH THE PLANS KEPT ON FILE WITH THE CITY. THIS ELECTRONIC APPROVAL MAY NOT BE EDITED ONCE ISSUED. ANY MODIFICATION TO THIS APPROVAL ONCE ISSUED WILL INVALIDATE THIS APPROVAL.  
CITY OF RALEIGH DEVELOPMENT APPROVAL \_\_\_\_\_  
RALEIGH WATER REVIEW OFFICER

ALL CONSTRUCTION SHALL BE IN ACCORDANCE WITH ALL TOWN OF ROLESVILLE, CITY OF RALEIGH AND WAKE COUNTY STANDARDS AND SPECIFICATIONS