

From: [FOG](#)
To: [Alexander, Jamal](#)
Cc: [FOG](#); [Sanders, Courtney](#)
Subject: 302 S Main St Learning Center Rolesville (SDP-23-07) - Grease Interceptor Requirement
Date: Wednesday, December 13, 2023 1:45:36 PM
Attachments: [The Learning Center Rolesville Utility Plan.pdf](#)

You don't often get email from fatog.fog@raleighnc.gov. [Learn why this is important](#)

Jamal,

Raleigh Water Fats, Oil, and Greases offers no objection to **Rolesville Learning Center located at 302 S. Main St, Rolesville, NC 27571** operating with a variance that **does not** require the installation of a grease interceptor. If the scope of operation changes to include ANY preparation of food, ware washing of soiled equipment onsite or routine CCTV inspections determine the establishment is conveying Fats, Oil and Greases to the sanitary sewer collection system; Raleigh Water may require the installation of an approved grease interceptor.

C. DeCarlo Sanders

Utilities Analyst

City of Raleigh

Public Utilities | Raleigh Water

Sewer Maintenance Division

Raleigh, NC 27604

919-996-2334 (office) | 919-280-1300 (mobile)

Courtney.Sanders@raleighnc.gov

From: Alexander, Jamal <Jamal.Alexander@kimley-horn.com>
Sent: Tuesday, December 12, 2023 5:11 PM
To: FOG <FatOG.FOG@raleighnc.gov>
Subject: Learning Center Rolesville (SDP-23-07) - Grease Interceptor Requirement

CAUTION: This email originated from outside of the organization. Do not click links or open attachments unless you verify that the attachment and content are safe. If you believe this email is suspicious, please click the 'Phish Alert' link in the banner to report this message.

Good Afternoon,

We recently received a comment from Tim Beasley in COR Public Utilities for the Learning Center Rolesville (302 S Main St) project as part of our Technical Review Committee review submitted to the Town of Rolesville. Per the comment, we would like to confirm whether our project requires a grease interceptor. The project consists of a 10,000 square foot daycare building with a kitchen that is designed to act as a warming facility only. The kitchen does not have a stove, oven, hood, or dryer, and all food is delivered by a food distribution company. For your reference, I have also attached our current utility plan.

Could you please confirm if a grease interceptor is required? Please let me know should you need any additional information.

Thank you,

Jamal Alexander, EI | Civil Analyst

Kimley-Horn | 421 Fayetteville Street, Suite 600, Raleigh, NC 27601

Direct: 919 566 1945

Connect with us: [Twitter](#) | [LinkedIn](#) | [Facebook](#) | [Instagram](#) | [Kimley-Horn.com](#)

Celebrating 16 years as one of FORTUNE's 100 Best Companies to Work For

Plotted By: Alexander, Jamal Sheet Set: THE LEARNING CENTER ROLESVILLE, Layout: C4.0 UTILITY PLAN, October 02, 2023, 02:41:39pm. K:\RAL_LDE\0130031004_Rolesville_Leaning_Center\10_CAD Files\Plan\Sheet\C4.0 UTILITY PLAN.dwg
 This document, together with the concepts and designs presented herein, is an instrument of service, is intended only for the specific purpose and client for which it was prepared. Reuse of and improper reliance on this document without written authorization and adaptation by Kimley-Horn and Associates, Inc. shall be without liability to Kimley-Horn and Associates, Inc.

STANDARD UTILITY NOTES

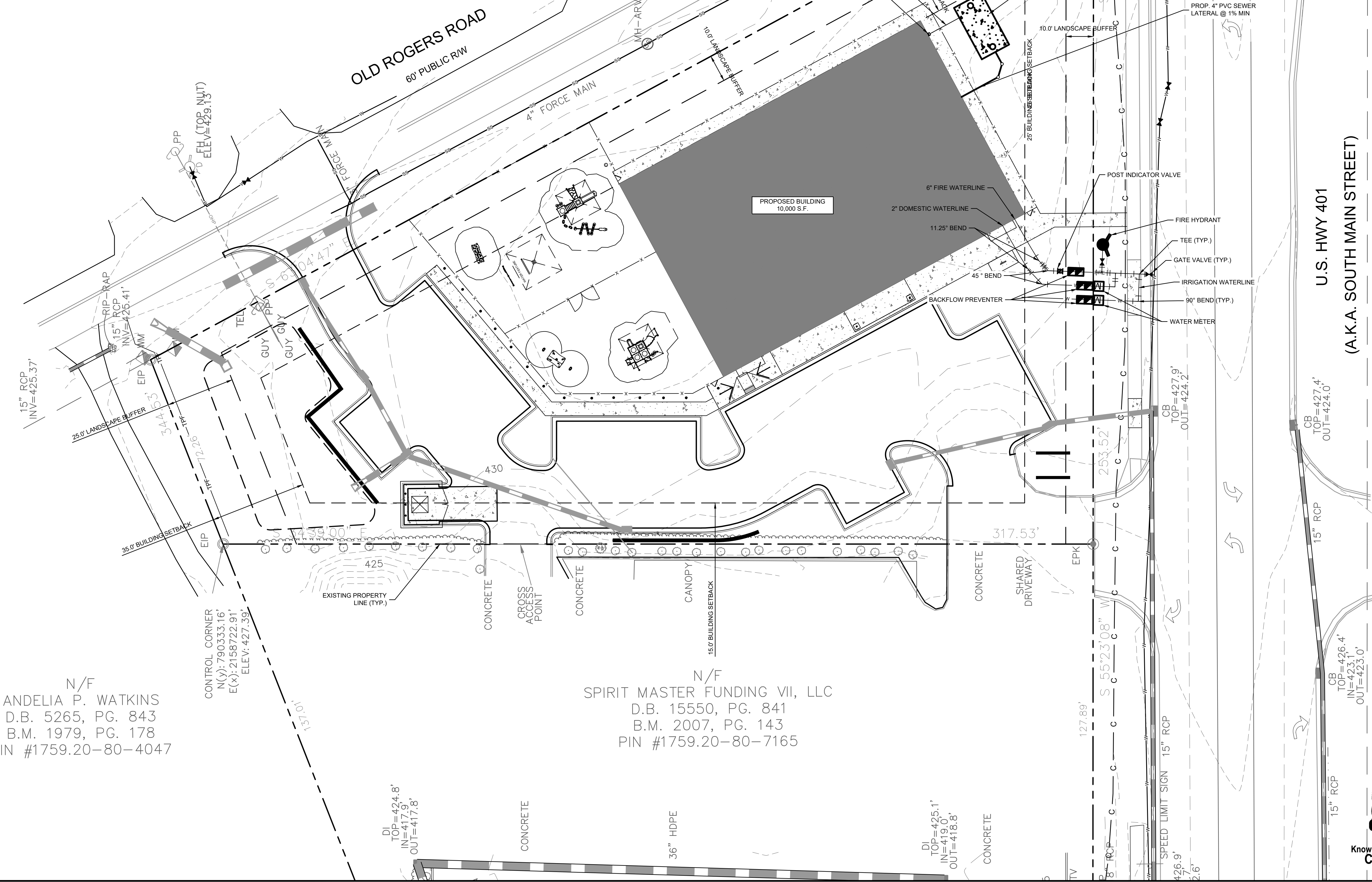
- ALL MATERIALS AND CONSTRUCTION METHODS SHALL BE IN ACCORDANCE WITH CITY OF RALEIGH DESIGN STANDARDS & SPECIFICATIONS
- UTILITY SEPARATION REQUIREMENTS:
 - A DISTANCE OF 100' SHALL BE MAINTAINED BETWEEN SANITARY SEWER & ANY PRIVATE OR PUBLIC WATER SUPPLY SOURCE SUCH AS AN IMPOUNDED RESERVOIR USED AS A SOURCE OF DRINKING WATER. IF ADEQUATE LATERAL SEPARATION CANNOT BE ACHIEVED, FERROUS SANITARY SEWER PIPE SHALL BE SPECIFIED & INSTALLED TO WATERLINE SPECIFICATIONS. HOWEVER, THE MINIMUM SEPARATION SHALL NOT BE LESS THAN 25' FROM A PRIVATE WELL OR 50' FROM A PUBLIC WELL.
 - WHEN INSTALLING WATER &/OR SEWER MAINS, THE HORIZONTAL SEPARATION BETWEEN UTILITIES SHALL BE 10'. IF THIS SEPARATION CANNOT BE MAINTAINED DUE TO EXISTING CONDITIONS, THE VARIATION ALLOWED IS THE WATER MAIN IN A SEPARATE TRENCH WITH THE ELEVATION OF THE WATER MAIN AT LEAST 18" ABOVE THE TOP OF THE SEWER & MUST BE APPROVED BY THE PUBLIC UTILITIES DIRECTOR. ALL DISTANCES ARE MEASURED FROM OUTSIDE DIAMETER TO OUTSIDE DIAMETER.
 - WHERE IT IS IMPOSSIBLE TO OBTAIN PROPER SEPARATION, OR ANYTIME A SANITARY SEWER PASSES OVER A WATER MAIN, DIP MATERIALS OR STEEL ENCASEMENT EXTENDED 10' ON EACH SIDE OF CROSSING MUST BE SPECIFIED & INSTALLED TO WATERLINE SPECIFICATIONS.
 - 5.0' MINIMUM HORIZONTAL SEPARATION IS REQUIRED BETWEEN ALL SANITARY SEWER & STORM SEWER FACILITIES, UNLESS DIP MATERIAL IS SPECIFIED FOR SANITARY SEWER.
 - MAINTAIN 18" MIN. VERTICAL SEPARATION AT ALL WATER MAIN & RCP STORM DRAIN CROSSINGS; MAINTAIN 24" MIN. VERTICAL SEPARATION AT ALL SANITARY SEWER & RCP STORM DRAIN CROSSINGS. WHERE ADEQUATE SEPARATIONS CANNOT BE ACHIEVED, SPECIFY DIP MATERIALS & A CONCRETE CRADLE HAVING 6" MIN. CLEARANCE.
 - ALL OTHER UNDERGROUND UTILITIES SHALL CROSS WATER & SEWER FACILITIES WITH 18" MIN. VERTICAL SEPARATION REQUIRED.
- ANY NECESSARY FIELD REVISIONS ARE SUBJECT TO REVIEW & APPROVAL OF AN AMENDED PLAN &/OR PROFILE BY THE CITY OF RALEIGH PUBLIC UTILITIES DEPARTMENT PRIOR TO CONSTRUCTION.
- CONTRACTOR SHALL MAINTAIN CONTINUOUS WATER & SEWER SERVICE TO EXISTING RESIDENCES & BUSINESSES THROUGHOUT CONSTRUCTION OF PROJECT. ANY NECESSARY SERVICE INTERRUPTIONS SHALL BE PRECEDED BY A 24 HOUR ADVANCE NOTICE TO THE CITY OF RALEIGH PUBLIC UTILITIES DEPARTMENT.
- 3.0' MINIMUM COVER IS REQUIRED ON ALL WATER MAINS & SEWER FORCE MAINS. 4.0' MINIMUM COVER IS REQUIRED ON ALL REUSE MAINS.
- IT IS THE DEVELOPER'S RESPONSIBILITY TO ABANDON OR REMOVE EXISTING WATER & SEWER SERVICES NOT BEING USED IN REDEVELOPMENT OF A SITE UNLESS OTHERWISE DIRECTED BY THE CITY OF RALEIGH PUBLIC UTILITIES DEPARTMENT. THIS INCLUDES ABANDONING TAP AT MAIN & REMOVAL OF SERVICE FROM ROW OR EASEMENT.
- INSTALL 2" WATER SERVICES WITH METERS LOCATED AT ROW OR WITHIN A 2'x2' WATERLINE EASEMENT IMMEDIATELY ADJACENT. NOTE: IT IS THE APPLICANT'S RESPONSIBILITY TO PROPERLY SIZE THE WATER SERVICE FOR EACH CONNECTION TO PROVIDE ADEQUATE FLOW & PRESSURE.
- INSTALL 4" PVC SEWER SERVICES @ 2.0% MINIMUM GRADE WITH CLEANOUTS LOCATED AT ROW OR EASEMENT LINE & SPACED EVERY 75 LINEAR FEET MAXIMUM.
- PRESSURE REDUCING VALVES ARE REQUIRED ON ALL WATER SERVICES EXCEEDING 80 PSI; BACKWATER VALVES ARE REQUIRED ON ALL SANITARY SEWER SERVICES HAVING BUILDING DRAINS LOWER THAN 1.0' ABOVE THE NEXT UPSTREAM MANHOLE
- ALL ENVIRONMENTAL PERMITS APPLICABLE TO THE PROJECT MUST BE OBTAINED FROM NCDOW, USACE &/OR FEMA FOR ANY RIPARIAN BUFFER, WETLAND &/OR FLOODPLAIN IMPACTS (RESPECTIVELY) PRIOR TO CONSTRUCTION.
- NC DOT ENCROACHMENT AGREEMENTS ARE REQUIRED FOR ANY UTILITY WORK (INCLUDING MAIN EXTENSIONS & SERVICE TAPS) WITHIN STATE ROW PRIOR TO CONSTRUCTION.
- CROSS-CONNECTION CONTROL PROTECTION DEVICES ARE REQUIRED BASED ON DEGREE OF HEALTH HAZARD INVOLVED AS LISTED IN APPENDIX - 9 OF THE RULES GOVERNING PUBLIC WATER SYSTEMS IN NORTH CAROLINA. THESE GUIDELINES ARE THE MINIMUM REQUIREMENTS. THE DEVICES SHALL MEET AMERICAN SOCIETY OF SANITARY ENGINEERING (ASSE) STANDARDS OR BE ON THE UNIVERSITY OF SOUTHERN CALIFORNIA APPROVAL LIST. THE DEVICES SHALL BE INSTALLED AND TESTED (BOTH INITIAL AND PERIODIC TESTING THEREAFTER) IN ACCORDANCE WITH THE MANUFACTURER'S RECOMMENDATIONS OR THE LOCAL CROSS-CONNECTION CONTROL PROGRAM, WHICHEVER IS MORE STRINGENT.
- THE STATE OF NORTH CAROLINA AND C.O.R. PUBLIC WORKS DEPT. SHALL BE NOTIFIED IN WRITING PRIOR TO UTILITY INSTALLATION AND FOR SCHEDULING INSPECTIONS.

UTILITY LEGEND	
---	PROPERTY LINE
W	WATER LINE
FW	FIRE LINE
SS	SANITARY SEWER LINE
E	ELECTRIC
FO	FIBER OPTIC
G	GAS
P	POWER
T	TELECOMMUNICATION
C	CABLE
LP	LIGHT POLE
WM	WATER METER
GV	GATE VALVE
PC	POINT OF CONNECTION
BP	BACKFLOW PREVENTOR
PT	PIPE TEE/BENDS
FR	FIRE HYDRANT (FH)
FDC	FIRE DEPARTMENT CONNECTION (FDC)
SSCO	SANITARY SEWER CLEANOUT (SSCO)
SSMH	SANITARY SEWER MANHOLE (SSMH)
SGT	SANITARY SEWER GREASE TRAP

STANDARD UTILITY NOTES (CONT.)

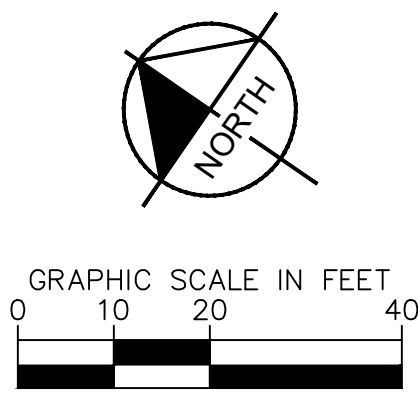
- TRAFFIC CONTROLS FOR ANY UTILITY WORK WITHIN THE PUBLIC RIGHT-OF-WAY SHALL BE IN COMPLIANCE WITH STANDARDS OF THE NORTH CAROLINA MANUAL ON UNIFORM TRAFFIC CONTROL DEVICES.
- IN THE EVENT AN ITEM IS NOT COVERED BY THESE PLANS, THEN THE STANDARDS AND SPECIFICATIONS CONTAINED IN THE CITY OF RALEIGH PUBLIC UTILITIES DEPARTMENT HANDBOOK COVERING SUCH ITEMS SHALL APPLY.
- IF CITY OF RALEIGH WATER AND SANITARY SEWER PERMITS ARE REQUIRED, CONTRACTOR IS RESPONSIBLE FOR ALL PERMIT FEES.
- LOCATIONS AND SIZES OF EXISTING WATER AND SEWER LINES SHOWN ON THESE PLANS WITHIN THE PROPERTY LIMITS OF THE SITE ARE ASSUMED BASED ON SURVEY OF SURFACE FEATURES (MANHOLES, VALVES, VAULTS, METERS, ETC.) PREPARED BY GSC SURVEYING, INC., 4072 BARRETT DRIVE, RALEIGH, N.C. 27609. IT IS SOLELY THE RESPONSIBILITY OF THE CONTRACTOR TO FIELD VERIFY THE HORIZONTAL AND VERTICAL LOCATION OF THE EXISTING UTILITIES PRIOR TO COMMENCING WORK. ANY DEVIATIONS FROM WHAT IS INDICATED ON THESE PLANS SHALL BE REPORTED TO THE DEVELOPER AND ENGINEER, IN WRITING, IMMEDIATELY.
- CONTRACTOR SHALL PROVIDE A MEANS TO KEEP ALL NEW PIPING ISOLATED FROM EXISTING PIPING UNTIL ALL NEW PIPING HAS BEEN TESTED, AND ACCEPTED FOR SERVICE.
- EXISTING UTILITIES SHALL BE PROTECTED DURING ALL CONSTRUCTION.
- THE SITE UTILITY CONTRACTOR SHALL PROVIDE ALL MATERIALS AND APPURTENANCES NECESSARY FOR COMPLETE INSTALLATION OF THE UTILITIES. ALL PUBLIC PIPE, STRUCTURES, AND FITTINGS SHALL BE INSPECTED BY THE CITY INSPECTOR PRIOR TO BEING COVERED. THE INSPECTOR MUST ALSO BE PRESENT DURING DISINFECTION AND PRESSURE TESTING OF ALL MAINS. THE CONTRACTOR'S BID PRICE SHALL INCLUDE ALL INSPECTION FEES.
- UTILITY WORK SHALL BE INSPECTED AND ACCEPTED BY CITY OF RALEIGH PRIOR TO PLACING INTO SERVICE.
- THERE SHALL BE A MINIMUM 3' CLEAR DISTANCE AROUND ALL FIRE HYDRANTS.
- THE CONTRACTOR SHALL BE RESPONSIBLE FOR PROVIDING "AS-BUILT" PLANS, PER CITY OF RALEIGH REQUIREMENTS, TO THE ENGINEER SHOWING THE LOCATION OF WATER AND SEWER SERVICES AND ANY DEVIATIONS FROM PLANS MADE DURING CONSTRUCTION. THE ENGINEER WILL PROVIDE THESE RECORD PLANS TO THE CITY OF RALEIGH.

SURVEY NOTE:
 EXISTING TOPOGRAPHICAL INFORMATION IS BASED ON A TOPOGRAPHIC SURVEY OBTAINED ON 02/23/2023 BY CMP PROFESSIONAL LAND SURVEYORS, 333 S. WHITE STREET, WAKE FOREST, NC 27588. PHONE: (919) 556-3148. CONTRACTOR SHALL BE RESPONSIBLE FOR VERIFYING ALL EXISTING INFORMATION, DEPICTED OR NOT, PRIOR TO CONSTRUCTION AND REPORT POTENTIAL CONFLICTS TO OWNER AND ENGINEER.



N/F
 ANDELIA P. WATKINS
 D.B. 5265, PG. 843
 B.M. 1979, PG. 178
 PIN #1759.20-80-4047

N/F
 SPIRIT MASTER FUNDING VII, LLC
 D.B. 15550, PG. 841
 B.M. 2007, PG. 143
 PIN #1759.20-80-7165



		REVISIONS No. DATE BY	
KHA PROJECT 013031004		DATE 09/29/2023	
SCALE AS SHOWN		DESIGNED BY JAA	
DRAWN BY JAA		CHECKED BY COB	
<h2>UTILITY PLAN</h2>			
THE LEARNING CENTER ROLESVILLE		PREPARED FOR ROLESVILLE, LLC.	
SHEET NUMBER C4.0		TOWN OF ROLESVILLE NORTH CAROLINA	

