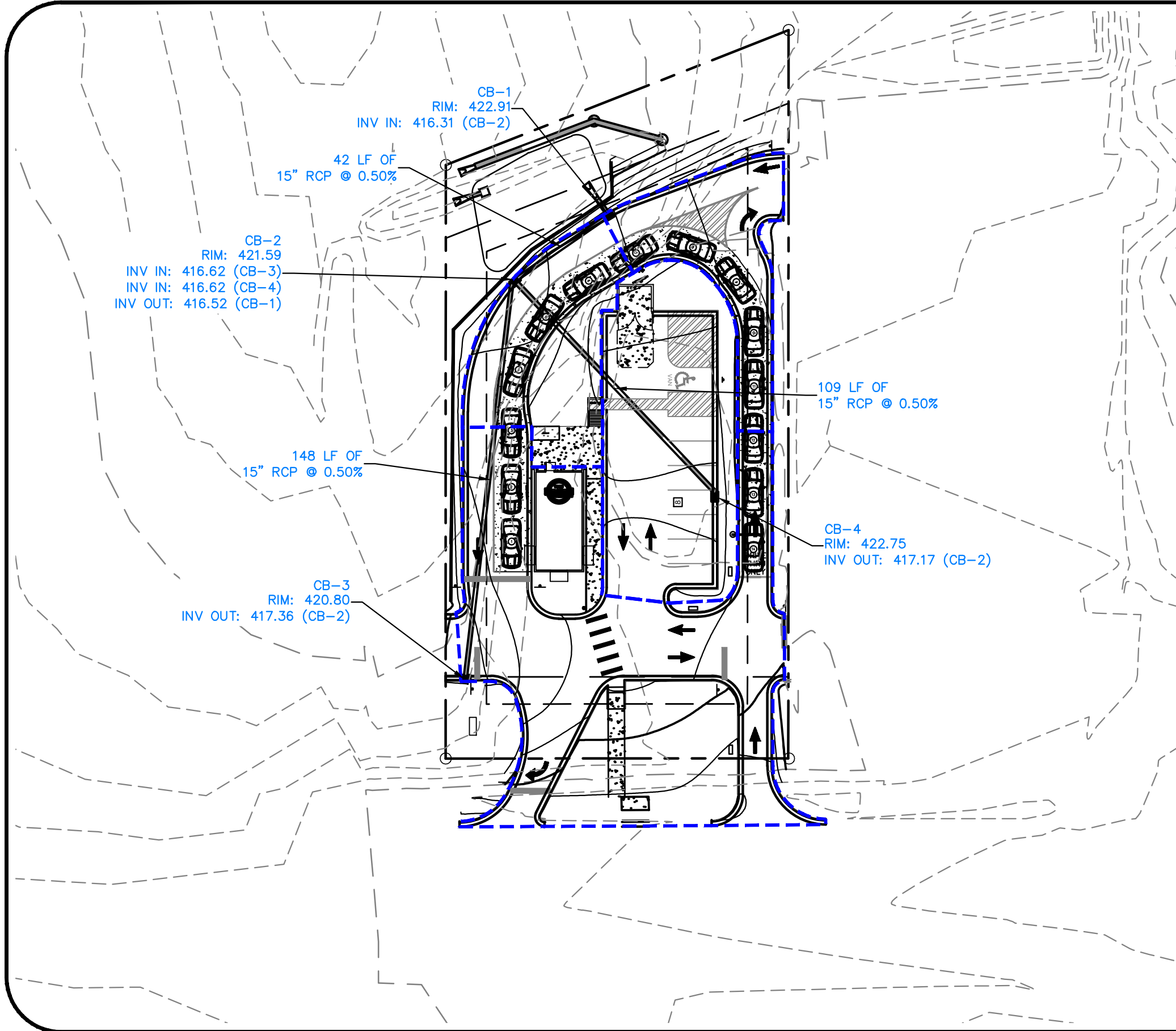


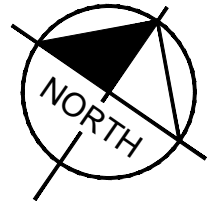
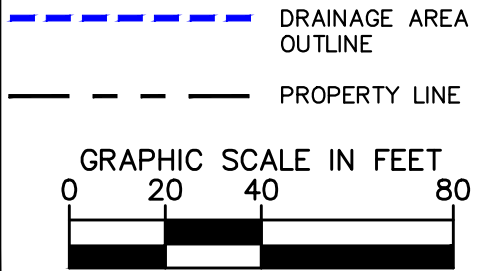
SCOOTERS ROLESVILLE



INLET DRAINAGE AREA	
INLET ID	AREA (AC)
CB-1	0.064
CB-2	0.081
CB-3	0.287
CB-4	0.134

#19 Include velocity dissipator calculations

LEGEND



INLET DRAINAGE AREA MAP

KHA PROJECT NO: 016485000
DATE: 12/19/2023



© 2023 KIMLEY-HORN AND ASSOCIATES, INC.
421 FAYETTEVILLE STREET, SUITE 600, RALEIGH, NC 27601
PHONE: 919-677-2000 FAX: 919-677-2050
WWW.KIMLEY-HORN.COM

2-YEAR

FlexTable: Catch Basin Table

Label	Inlet	Inlet Location	Elevation (Rim) (ft)	Elevation (Invert) (ft)	Inlet C	Inlet Drainage Area (acres)	External CA (acres)	Local CA (acres)	Local Intensity (in/h)	Local Flow Time (min)	Bypassed Rational Flow (cfs)	Flow (Captured) (cfs)	Flow (Total Out) (cfs)	Capture Efficiency (Calculated) (%)	Spread / Top Width (ft)	Hydraulic Grade Line (In) (ft)	Clogging Factor (%)
CB-1	NCDOT-combination inlet	On Grade	422.91	416.21	0.95	0.064	0.000	0.061	5.620	5.0	0.03	0.31	2.51	91.0	3.6	416.89	0.0
CB-2	NCDOT-combination inlet	In Sag	421.59	416.52	0.75	0.081	0.000	0.061	5.620	5.0	0.00	0.34	2.23	100.0	3.1	417.13	0.0
CB-3	NCDOT-combination inlet	In Sag	420.80	417.36	0.85	0.287	0.000	0.244	5.620	5.0	0.00	1.38	1.38	100.0	7.7	417.83	0.0
CB-4	NCDOT-combination inlet	In Sag	422.75	417.17	0.75	0.134	0.000	0.101	5.620	5.0	0.00	0.57	0.57	100.0	4.3	417.47	0.0

#22 Gutter spread is too large, 6ft max

10-YEAR

FlexTable: Conduit Table

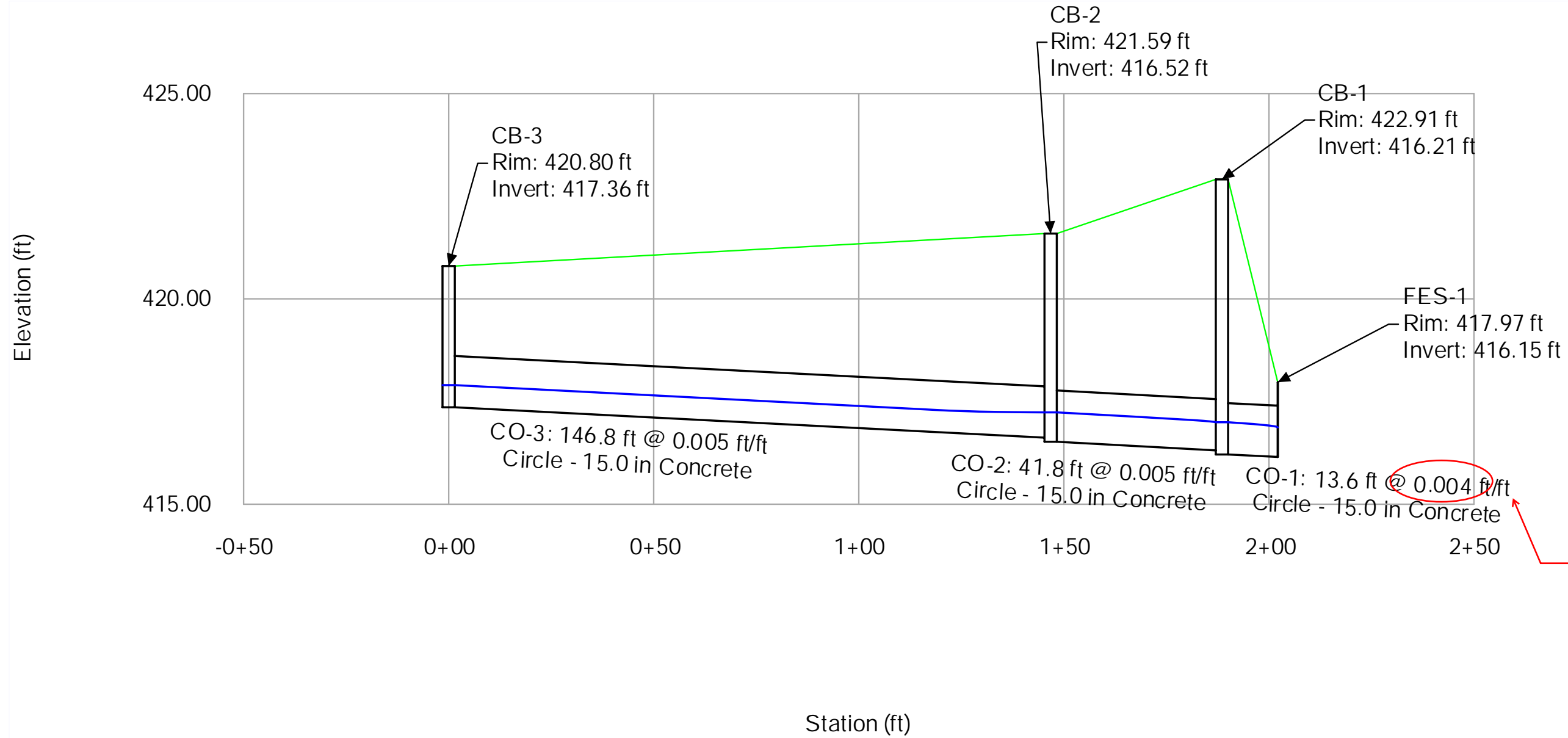
#15 Slope below minimum, 0.5%

Label	Start Node	Stop Node	Upstream Inlet C	Upstream Inlet Area (acres)	Velocity (ft/s)	System Rational Flow (cfs)	Capacity (Full Flow) (cfs)	Flow (cfs)	System Intensity (in/h)	Invert (Start) (ft)	Invert (Stop) (ft)	Hydraulic Grade Line (In) (ft)	Hydraulic Grade Line (Out) (ft)	Length (Unified) (ft)	Slope (Calculated) (ft/ft)	Diameter (in)	Manning's n	Material
CO-1	CB-1	FES-1	0.95	0.064	3.83	3.21	4.29	3.21	6.938	416.21	416.15	416.99	416.87	13.6	0.004	15.0	0.013	Concrete
CO-2	CB-2	CB-1	0.75	0.081	3.93	2.85	4.58	2.85	6.989	416.52	416.31	417.23	416.99	41.8	0.005	15.0	0.013	Concrete
CO-3	CB-3	CB-2	0.85	0.287	3.50	1.77	4.59	1.77	7.190	417.36	416.62	417.90	417.23	146.8	0.005	15.0	0.013	Concrete
CO-4	CB-4	CB-2	0.75	0.134	2.74	0.73	4.62	0.73	7.190	417.17	416.62	417.51	417.23	107.7	0.005	15.0	0.013	Concrete

10-YEAR

Profile Report

Engineering Profile - CB-3 to FES-1 (2023-12-18 Scooters Rolesville.stsw)



10-YEAR
Profile Report
Engineering Profile - CB-4 to CB-2 (2023-12-18 Scooters Rolesville.stsw)

