

Updated 1-12-2022

Disclaimer: This policy is subject to revision as COVID-19 has shown to be an ever-changing situation.

COVID-19

COVID-19 Exposure and Close Contact Policy (Athletics)

**Any direction not covered hereinafter please refer to guidelines established by the CDC.*

Should a coach, staff member, official or participant be **diagnosed** with COVID-19, it is expected that it will be reported to the Town of Rolesville (TOR) Parks and Recreation department **immediately** in order to take proper measures:

- a. Everyone on the team will be contacted via email and encouraged to be tested;
- b. The whole team will not be permitted to participate in practices or games for 10 days.
- c. Any other teams who have played against the infected person within 2 days of the positive test will also not be permitted to participate in practices or games for 10 days after the last contact with the infected team.
- d. Those that have been **diagnosed** with COVID-19 and meet the following criteria may return to play.
 - i. Received a **negative test taken at least 5 days after initially testing positive**. All negative test results must be presented to and approved by the Athletic Coordinator by 3pm the day of practice or a game for eligibility to participate the same day. If game or practice is on a Saturday, the negative test result must be submitted to the Athletic Coordinator by 3:00 PM on Friday.

OR
 - ii. Wait 10 days after being diagnosed with COVID-19.

2. Should a coach, staff member, official or participant be **exposed** to, or have **close contact** with COVID-19, it is expected that it will be reported to the Town of Rolesville (TOR) Parks and Recreation department **immediately** in order to take proper measures:
 - a. Those that have been exposed COVID-19 and meet the following criteria may return to play.
 - iii. Received a **negative test taken at least 5 days after exposure**. All negative test results must be presented to and approved by the Athletic Coordinator by 3pm the day of practice or a game for eligibility to participate the same day. If game or practice is on a Saturday, the negative test result must be submitted to the Athletic Coordinator by 3:00 PM on Friday.

OR
 - iv. Wait 10 days after being exposed to COVID-19.

Indoor Mask Policy (Athletics)

**Any direction not covered herein after please refer to the current Executive Order.*

All players, coaches, officials and staff are required to wear face coverings at all times will indoors unless they meet an exemption recognized by the Wake County Mask Mandate.

- Mask Mandate - <https://s3.us-west-2.amazonaws.com/wakegov.com.if-us-west-2/prod/documents/2021-08/DECLARATION-2021.pdf>

FAQ

Q - What counts as an exposure?

A - Contact with someone infected with SARS-CoV-2, The virus that causes COVID-19, in a way that increases likelihood of getting infected with the virus

Q - What counts as close contact?

A - Someone who was less than 6 feet away from an infected person (Laboratory-confirmed or a clinical diagnosis) for a cumulative total of 15 minutes or more over a 24-hour period (for example, three individual 5-minute exposures for a total of 15 minutes).

Q - What type of test will be accepted?

A - A rapid test or a Laboratory test

Q - What information does my test result need to show to be accepted?

A - Your test result should show your name, date of birth, collection date, acceptable type of test and a negative test result

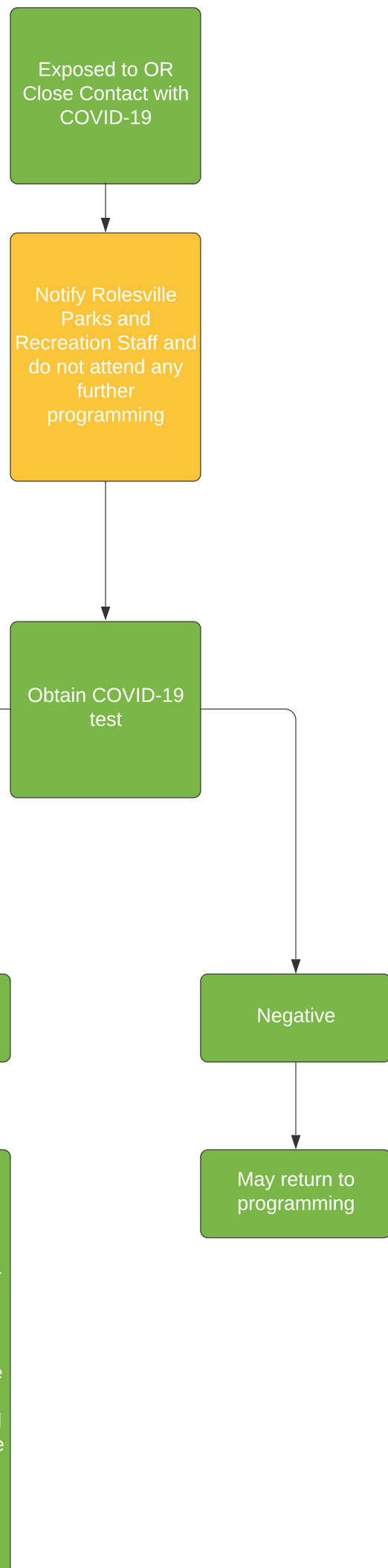
Q - Is my initial exposure or positive test date considered day 1 of my suspension?

A - No, your initial exposure or positive test date is counted as day 0, the following day is counted as day 1.

**Games and practices will not be rescheduled or made up if cancelled due to COVID-19*

All refund requests are subject to the policies found on TOR's website.

- Refund Request Policy - <https://www.rolesvillenc.gov/parks-recreation/forms>



FAQ

Q - What counts as an exposure?

A - Contact with someone infected with SARS-CoV-2, The virus that causes COVID-19, in a way that increases likelihood of getting infected with the virus

Q - What counts as close contact?

A - Someone who was less than 6 feet away from an infected person (Laboratory-confirmed or a clinical diagnosis) for a cumulative total of 15 minutes or more over a 24-hour period (for example, *three individual 5-minute exposures for a total of 15 minutes*).

Q - What type of test will be accepted?

A - A rapid test or a Laboratory test

Q - What information does my test result need to show to be accepted?

A - Your test result should show your name, date of birth, collection date, acceptable type of test and a negative test result

Q - Is my initial exposure date considered day 1 of my suspension?

A - No, your initial exposure date is counted as day 0, the following day is counted as day 1.

If at any point in time you test positive for COVID-19, it is required that you notify Rolesville Parks and Recreation staff immediately and do not attend any further programming until otherwise directed.

Athletic Coordinator - Garrit Soney
 Phone (919)-554-6582 ext.119
 Email - garrit.soney@rolesville.nc.gov

Program Coordinator - Madison Barry
 Phone (919)-554-6582 ext.121
 Email - madison.barry@rolesville.nc.gov

Special Events Coordinator - Kristen Stafford
 Phone (919)-554-6582 ext.120
 Email - kristen.stafford@rolesville.nc.gov