



Rolesville Town Council Meeting: Main Street Project Update

Betsy L. Watson, PE
October 27, 2020



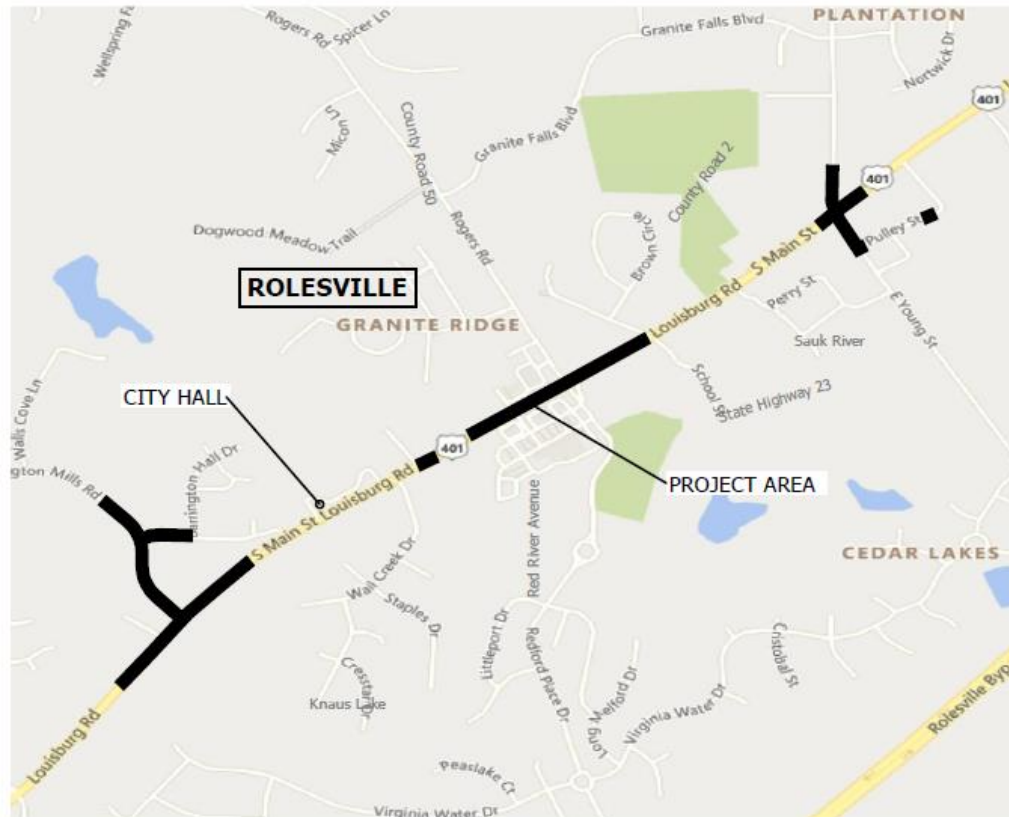
Agenda

1. Status update and schedule
2. Burlington Mills Road design update
3. Main St. at Young St. design update
4. Concepts for public realm at Main and Young
5. Concepts for Main St. medians
6. Questions



Image from Main Street Vision Plan

Status Update and Schedule



- Projects were selected for LAPP funding!
- Two projects were combined into one: U-6241
- Final design is in progress
- Anticipated construction start early 2022
- Anticipated construction completion Summer 2023

Burlington Mills Road Realignment

Proposed Development Improvements outlined in blue



Burlington Mills Road Realignment

Proposed Development Improvements outlined in blue



Burlington Mills Road Realignment

Proposed Development Improvements outlined in blue



Burlington Mills Road Realignment

Proposed Development Improvements outlined in blue



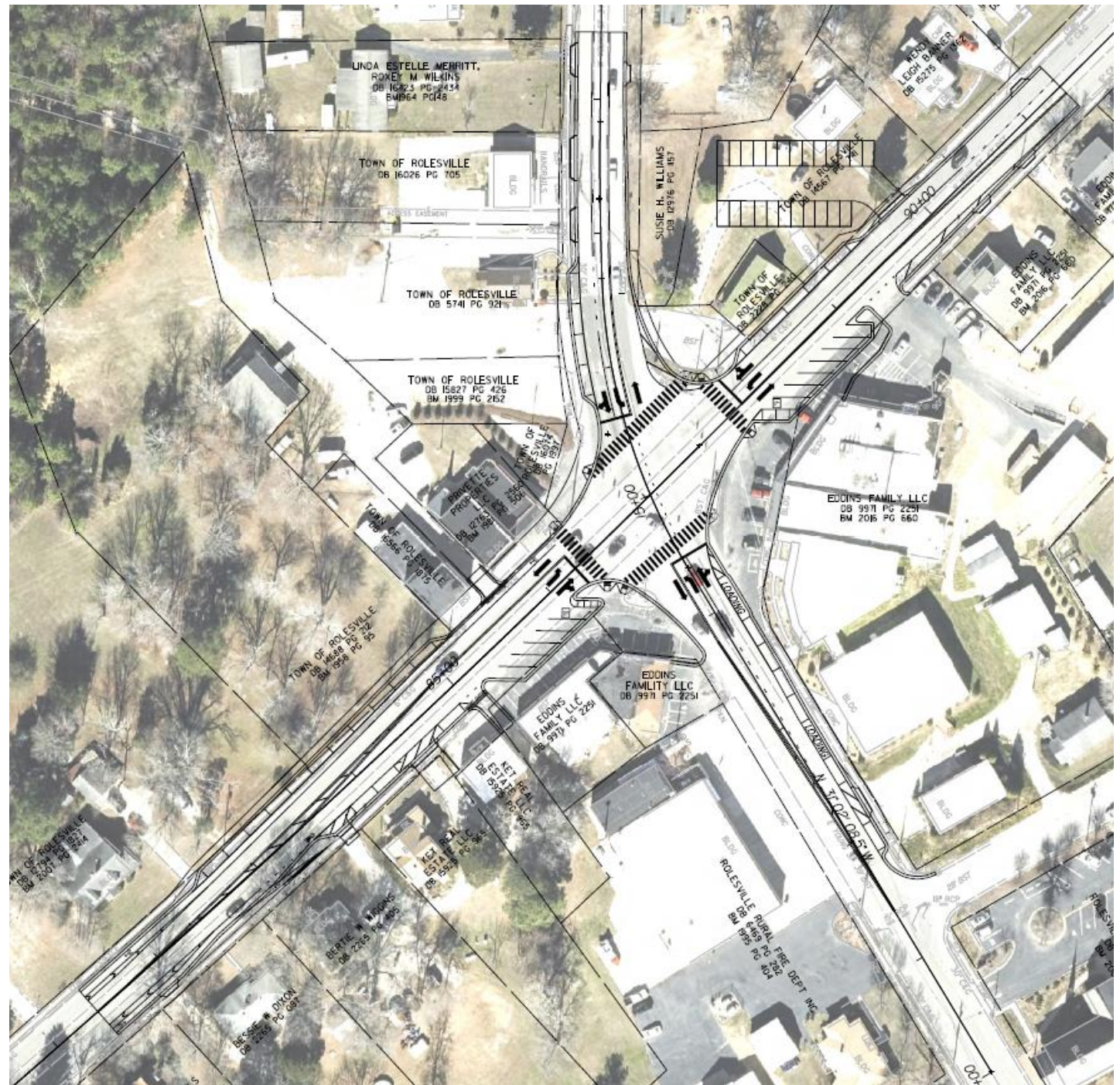
Main Street at Young Street

- Stantec investigated a design option that would reduce construction impacts
- We recorded a 12-minute video presentation explaining the design options, which was posted to the Town's YouTube channel on July 21
- We held a virtual stakeholder meeting on August 11
- It was decided to stick with our original "Option 1"



Option 1

- Road will be undercut to become lower than existing
- Heavy impacts during construction
- Intersection will be closed to vehicles for about 2 months but businesses will remain open
- Final product will have greater flexibility for the public space, or public realm





Main and Young Public Realm



Flexible Outdoor Spaces

- Simple hardscape areas with limited fixed objects allow for more flexibility in the downtown area
- Movable seating/chairs and umbrellas invite customers to stay and enjoy the area
- Seasonal planters create a sense of safety for pedestrians
- Lighting to create an inviting ambiance





Feature Local Materials

- Pay homage to Rolesville Granite (below) in hardscape elements





Honor the History of Downtown

- Public art as a storytelling feature of the downtown experience
- Wayfinding signage to guide and direct visitors to downtown





Street Trees in Strategic Locations

- Tree wells or limited planting space around trees
- Ensure subsurface tree root space allocations
- Provide shade in the downtown





Benches

- Fixed benches for comfort and image of the area
- Plant material and seat walls optional





Median Treatments



Native Plants

- Drought tolerant and hardy, native perennials, shrubs, and small trees
- Mulch until established





Decorative Paving

- Raised median with paving pattern
- Option for permeable paving material or pavers
- Limited to no plantings





Median Bioswales

- Dual function for both aesthetics and sustainable stormwater treatment
- Combination of plant material, stones, and pavers





Naturalized Stones, Boulders, & Plants

- Decorative stone pavers, river pebbles, and crushed aggregate
- Drought tolerant grasses and perennials in pockets





Pebble/Stone Hardscape Design with Plant Pockets

- Artistic hardscape design with pebbles/stones
- Drought tolerant grasses and perennials in small pockets





Thank you!

