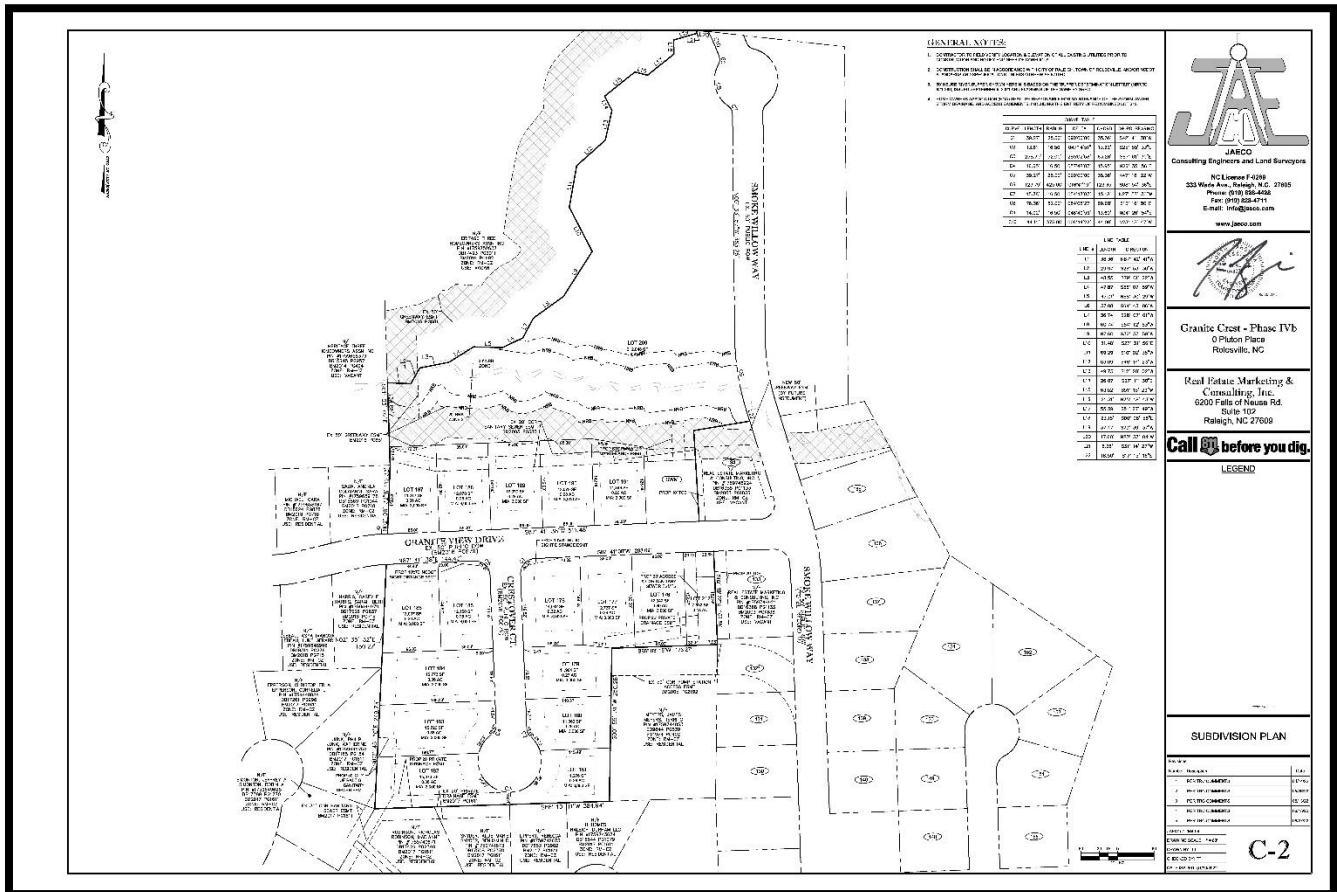


HIGHLIGHTS



The Granite Crest Phase IV Preliminary Subdivision Plat was approved by the Town Board of Commissioners on July 6, 2022.

The Town of Rolesville is committed to providing accessible facilities, programs and services for all people in compliance with the Americans with Disabilities Act. Should you need assistance or a particular accommodation please contact the ADA Coordinator.

Developments

CURRENT RESIDENTIAL PERMITS ISSUED Summary of Activity

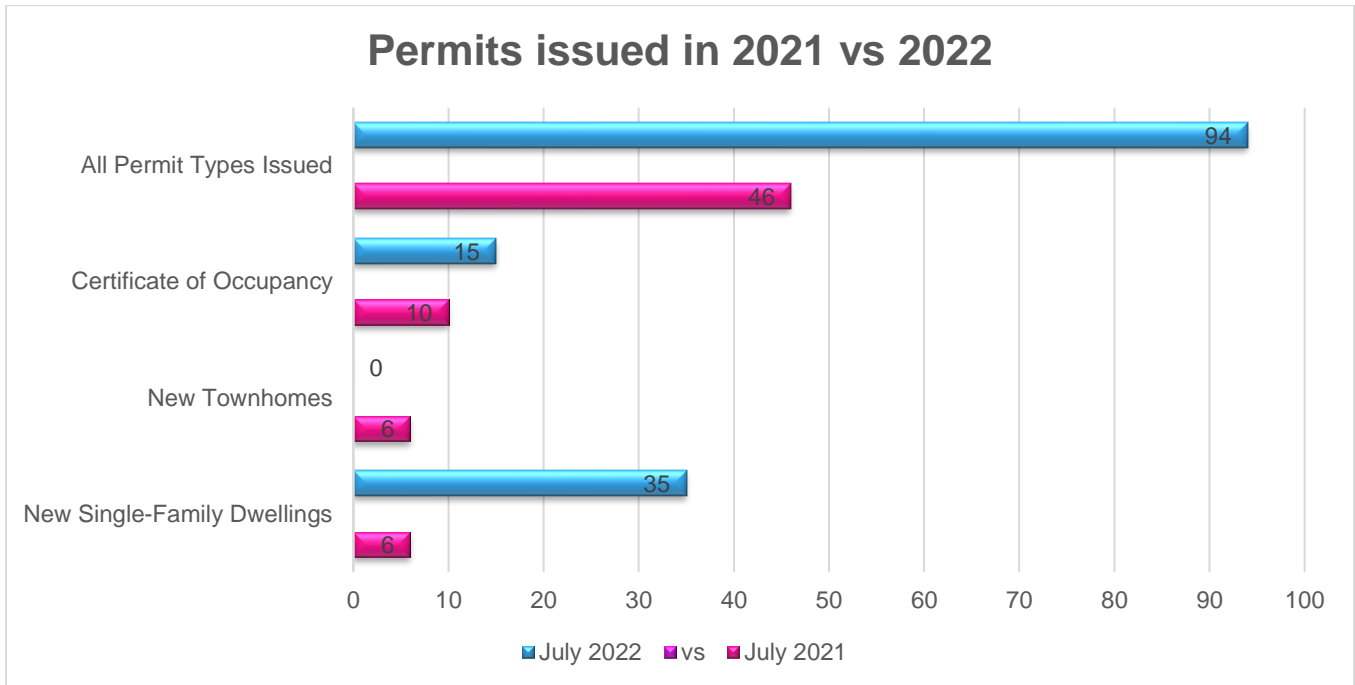
Subdivision	Total Buildable Lots	Total Permits Issued Per Development	Un-permitted Lots Remaining	Permits Issued in July	Permits Issued YTD
Carlton Pointe	301	297	4		7
Chandler's Ridge	74	57	17	01	29
Elizabeth Springs	87	43	28	05	16
Perry Farms	113	89	25	02	28
Preserve at Jones Dairy South	122	48	49	06	48
Stonewater	208	206	2		1
TOTAL	905	725	141	14	129

Elizabeth Springs Townhomes	54	35	13	0	28
TOTAL	54	35	13	0	28

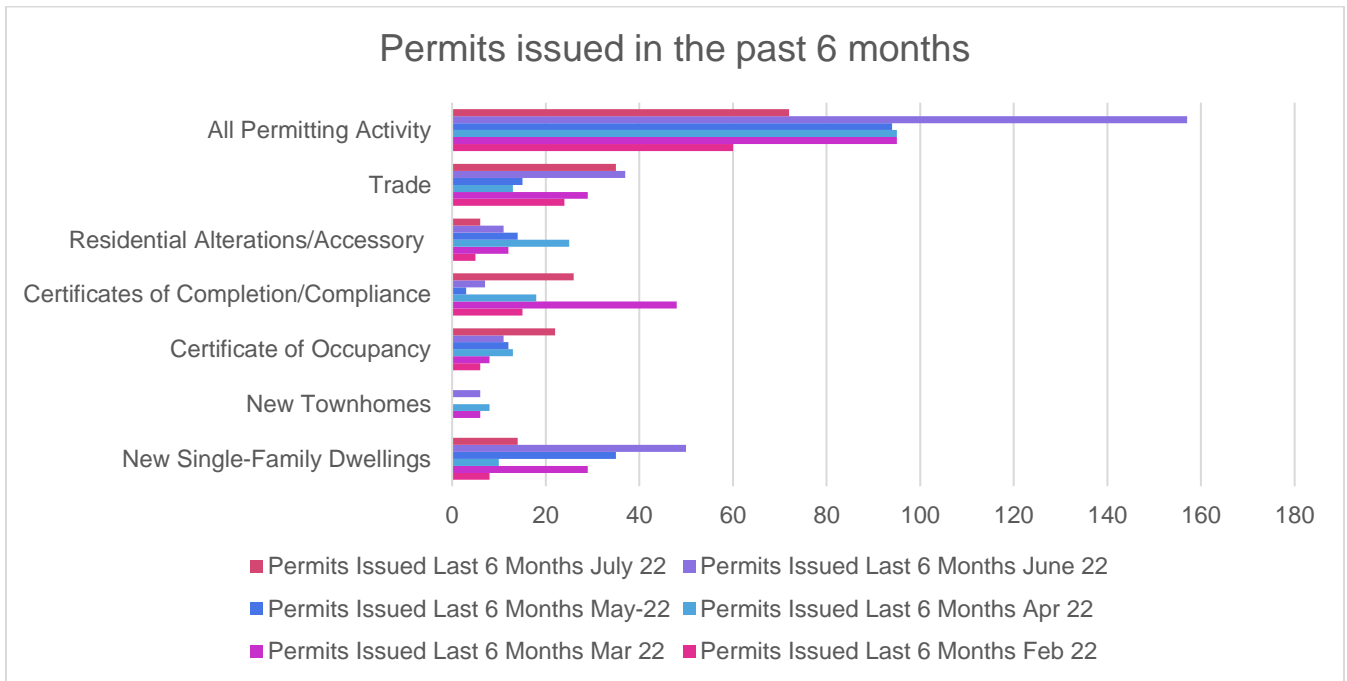
ETJ/ Non-Sub					
TOTAL				0	03

TOTAL Residential Permits Issued	959	760	154	14	157
---	------------	------------	------------	-----------	------------

Permitting Activity



The Town of Rolesville has experienced an overall **increase** in permitting activity compared to this time last year.



Detailed information regarding these projects can be found by clicking on the link provided <https://www.rolesvillenc.gov/planning/development-projects>

Development Projects Summary

Commercial/ Mixed-Use

Triangle Medical Group	Carolina Legacy Volleyball	Cobblestone
Hampton Lake Drive Dental Office	Public Works Facility	Wallbrook

Residential

A-Master Team- 47 New Townhomes

Chandlers Ridge- 90 New Single-Family Homes

Cobblestone- 176 New Apartments

Elizabeth Springs- 89 New Single-Family Homes & 98 New Townhomes

Granite Crest Phase 3- 19 New Single-Family Homes

Kalas Falls- 484 New Single-Family Homes & 108 New Townhomes

Perry Farms Phase 2- 33 New Single-Family Homes

Preserve at Jones Dairy Road Central- 261 New Single-Family Homes & 173 New THs

Preserve at Jones Dairy Road North- 141 New Single-Family Homes & 65 New Townhomes

Preserve at Jones Dairy Road South- 221 New Single-Family Homes

Preserve at Moody Farm- 82 New Single-Family Homes

Regency at Heritage- 27 New Single-Family Homes

Rolesville Crossing – 177 New Single-Family Homes & 120 New Townhomes

The Point- 483 New Single-Family Homes & 324 New Townhomes

The Townes at Carlton Pointe- 53 New Townhomes

Wallbrook- 140 New Townhomes

