

**Disclaimer: This policy is subject to revision as COVID-19 has shown to be an ever-changing situation.**

## **COVID-19**

### **COVID-19 Exposure and Close Contact Policy (Cultural Programs)**

*\*Any direction not covered hereinafter please refer to guidelines established by the CDC.*

1. Should a staff member, vendor or participant be **diagnosed** with COVID-19, it is expected that it will be reported to the Town of Rolesville (TOR) Parks and Recreation department **immediately** in order to take proper measures:
  - a. Everyone in the class/session will be contacted via email and encouraged to be tested;
  - b. The whole class/session will not be permitted to participate in Town of Rolesville programming (cultural or athletics) for 10 days.
  - c. Those that have been **diagnosed** with COVID-19 and meet the following criteria may return to programming.
    - i. Received a **negative test taken at least 5 days after initially testing positive for COVID-19**. All negative test results must be presented to and approved by the Program Coordinator by 3pm the day of a class for eligibility to participate the same day. If a program is on a Saturday, the negative test result must be submitted to the Program Coordinator by 3:00 PM on Friday.

**OR**
    - ii. Wait 10 days after being diagnosed with COVID-19.
2. Should a staff member, vendor or participant be **exposed** to, or have **close contact** with COVID-19, it is expected that it will be reported to the Town of Rolesville (TOR) Parks and Recreation department **immediately** in order to take proper measures:
  - a. Those that have been exposed COVID-19 and meet the following criteria may return to programming.
    - iii. Received a **negative test taken at least 5 days after initially being exposed to COVID-19 or having close contact with COVID-19**. All negative test results must be presented to and approved by the Program Coordinator by 3pm the day of the class for eligibility to participate the same day. If a program is on a Saturday, the negative test result must be submitted to the Program Coordinator by 3:00 PM on Friday.

**OR**
    - iv. Wait 10 days after being exposed to COVID-19.

### **Indoor Mask Policy (Cultural Programs)**

*\*Any direction not covered herein after please refer to the current Executive Order.*

All participants, parent/guardians, staff and vendors are required to wear face coverings at all times will indoors unless they meet an exemption recognized by the Wake County Mask Mandate.

- Mask Mandate - <https://s3.us-west-2.amazonaws.com/wakegov.com.if-us-west-2/prod/documents/2021-08/DECLARATION-2021.pdf>

## PROGRAM POLICIES

1. Participants and vendors will answer health screening questions when they arrive at the facility.
  - a. If a participant does not pass the health screening questions, that participant cannot participate in the program. The participant can return and participate in the program when COVID-19 Policies on page 1 (one) have been met.
  - b. If a parent/guardian has a fever or is showing COVID-19 symptoms, they may not enter the facility.
2. Town of Rolesville Staff will fill out health screening questions before each shift.
3. Patrons will be asked to use hand sanitizer when they enter and exit the building.
4. Hand sanitizer will be located inside at each entrance of the facility.
5. Patrons must wait outside the facility until it is their time for class, or invited in by Town of Rolesville staff.
6. Patrons must leave the building immediately after class is over.
7. There will be at least 10 minutes between all classes to give time for the Town of Rolesville's staff to clean.
8. All patrons, five (5) years and older, **both vaccinated and unvaccinated individuals, are required to wear a face-covering at all times while inside the facility.**
  - a. CDC recommends all people 2 years of age and older wear a cloth face-covering in public settings and when around others who don't live in their household.
  - b. Definitions: "Face Covering" means a covering of the nose and mouth that is secured to the head with ties, straps, or loops over the ears and fits snugly against the side of a person's face. A Face Covering can be made of a variety of synthetic and natural fabrics, including cotton, silk, or linen. Face Coverings are most effective when they fit snugly against a person's face and have two (2) or more layers. This can be achieved by wearing a cloth Face Covering with two or more layers or by wearing one disposable mask underneath a cloth mask. A cloth Face Covering may be factory-made, sewn by hand, or can be improvised from household items such as scarfs, bandanas, t-shirts, sweatshirts, or towels. These Face Coverings are not intended for use by healthcare providers in the care of patients. Based on recommendations from the CDC, face shields do not meet the requirements for Face Coverings.
  - c. <https://www.cdc.gov/coronavirus/2019-ncov/prevent-getting-sick/cloth-face-cover-guidance.html>
  - d. Exemptions can be found: <https://governor.nc.gov/news/executive-orders>
9. The bathroom will be open for use.
10. The water fountain will be open for use.
  - a. Please **DO NOT** drink directly from the water fountain.
  - b. Use the water fountain as a bottle filling station.
11. **Please bring bottled water labeled with your name.**
  - a. No spray bottles, water must transfer directly from bottle to mouth
12. Please bring your own personal items such as towels, yoga mats, clothing, weights, etc. unless otherwise noted.
  - a. **DO NOT** share these personal items.
13. **NO** food is allowed in the facility.
14. Everyone in the facility is expected to cover their coughs and sneezes with a tissue or use the inside of their elbow. Used tissues should be thrown in the trash and hands washed immediately with soap and water for at least 20 seconds.
  - a. If soap and water are not readily available, hand sanitizer that contains at least 60% alcohol can be used.
15. Town of Rolesville will not grant refunds to participants who do not pass the health screening or those who are required to miss programs due to COVID-19. All refunds are subject to the policies found on the Town of Rolesville website.
  - a. Refund Request Policy - <https://www.rolesvillenc.gov/parks-recreation/forms>

FAQ

**Q - What counts as an exposure?**

A - Contact with someone infected with SARS-CoV-2, The virus that causes COVID-19, in a way that increases likelihood of getting infected with the virus

**Q - What counts as close contact?**

A - Someone who was less than 6 feet away from an infected person (Laboratory-confirmed or a clinical diagnosis) for a cumulative total of 15 minutes or more over a 24-hour period (for example, three individual 5-minute exposures for a total of 15 minutes).

**Q - What type of test will be accepted?**

A - A rapid test or a Laboratory test

**Q - What information does my test result need to show to be accepted?**

A - Your test result should show your name, date of birth, collection date, acceptable type of test and a negative test result.

**Q - Is my initial exposure or positive test date considered day 1 of my suspension?**

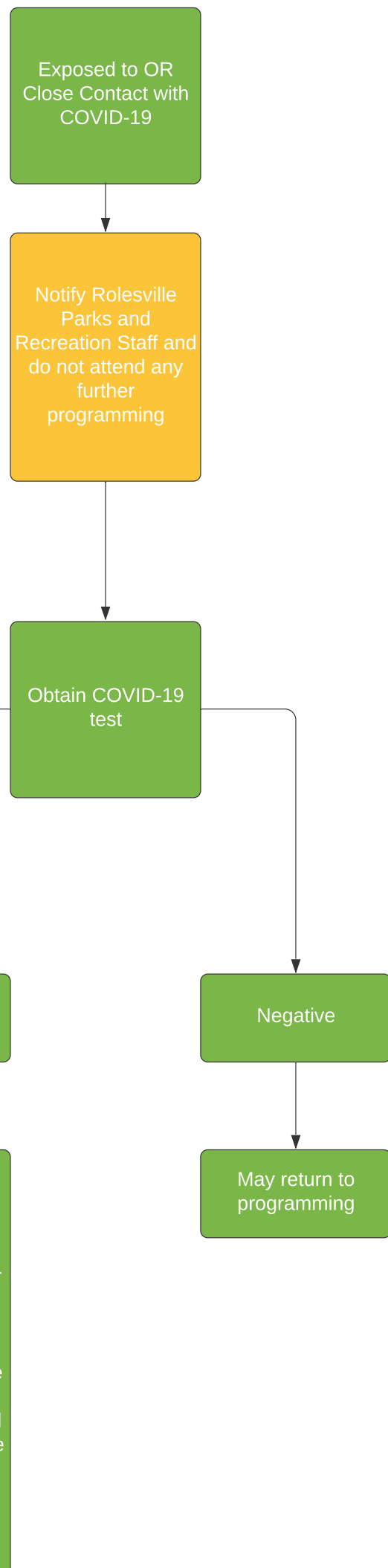
A - No, your initial exposure or positive test date is counted as day 0, the following day is counted as day 1.

*\*Programs will not be rescheduled or made up if cancelled due to COVID-19. If the Town of Rolesville cancels the program, class, or session, there will be a 100% refund.*

All refund requests are subject to the policies found on TOR's website.

- Refund Request Policy - <https://www.rolesvillenc.gov/parks-recreation/forms>





## FAQ

### Q - What counts as an exposure?

A - Contact with someone infected with SARS-CoV-2, The virus that causes COVID-19, in a way that increases likelihood of getting infected with the virus

### Q - What counts as close contact?

A - Someone who was less than 6 feet away from an infected person (Laboratory-confirmed or a clinical diagnosis) for a cumulative total of 15 minutes or more over a 24-hour period (for example, *three individual 5-minute exposures for a total of 15 minutes*).

### Q - What type of test will be accepted?

A - A rapid test or a Laboratory test

### Q - What information does my test result need to show to be accepted?

A - Your test result should show your name, date of birth, collection date, acceptable type of test and a negative test result

### Q - Is my initial exposure date considered day 1 of my suspension?

A - No, your initial exposure date is counted as day 0, the following day is counted as day 1.

If at any point in time you test positive for COVID-19, it is required that you notify Rolesville Parks and Recreation staff immediately and do not attend any further programming until otherwise directed.

Athletic Coordinator - Garrit Soney  
 Phone (919)-554-6582 ext.119  
 Email - garrit.soney@rolesville.nc.gov

Program Coordinator - Madison Barry  
 Phone (919)-554-6582 ext.121  
 Email - madison.barry@rolesville.nc.gov

Special Events Coordinator - Kristen Stafford  
 Phone (919)-554-6582 ext.120  
 Email - kristen.stafford@rolesville.nc.gov