



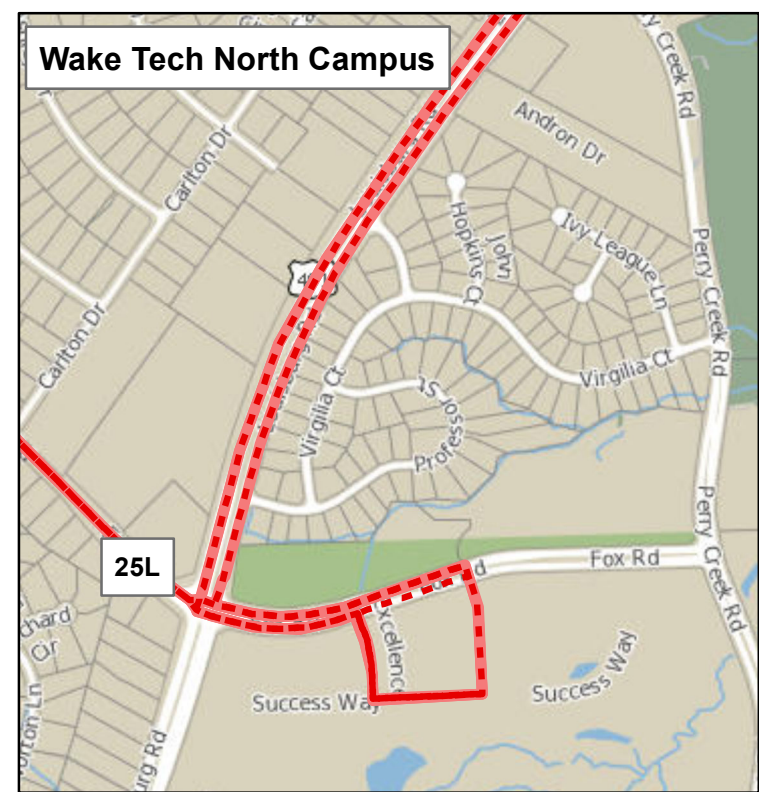
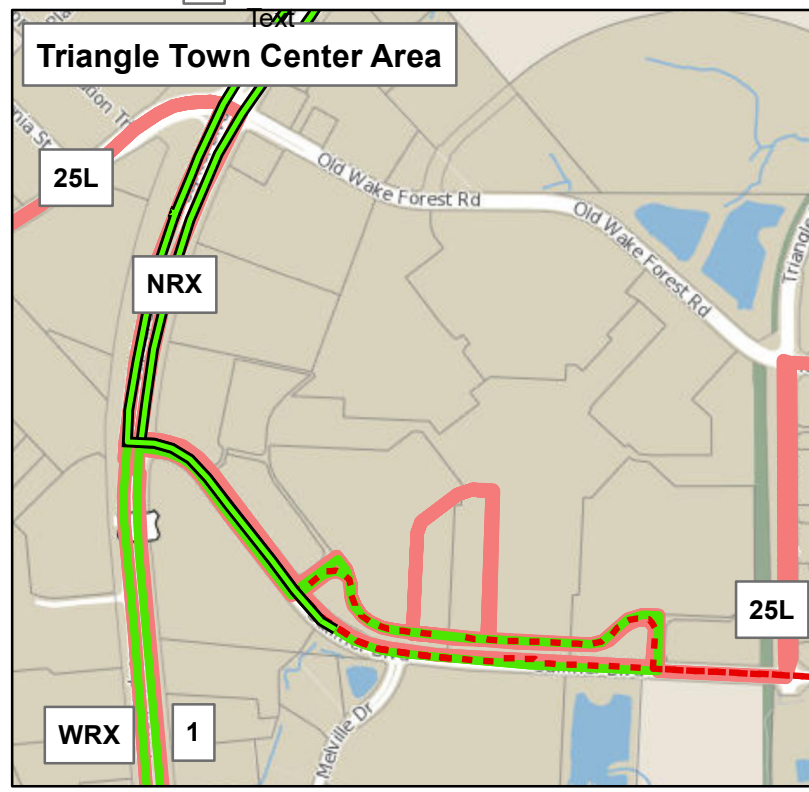
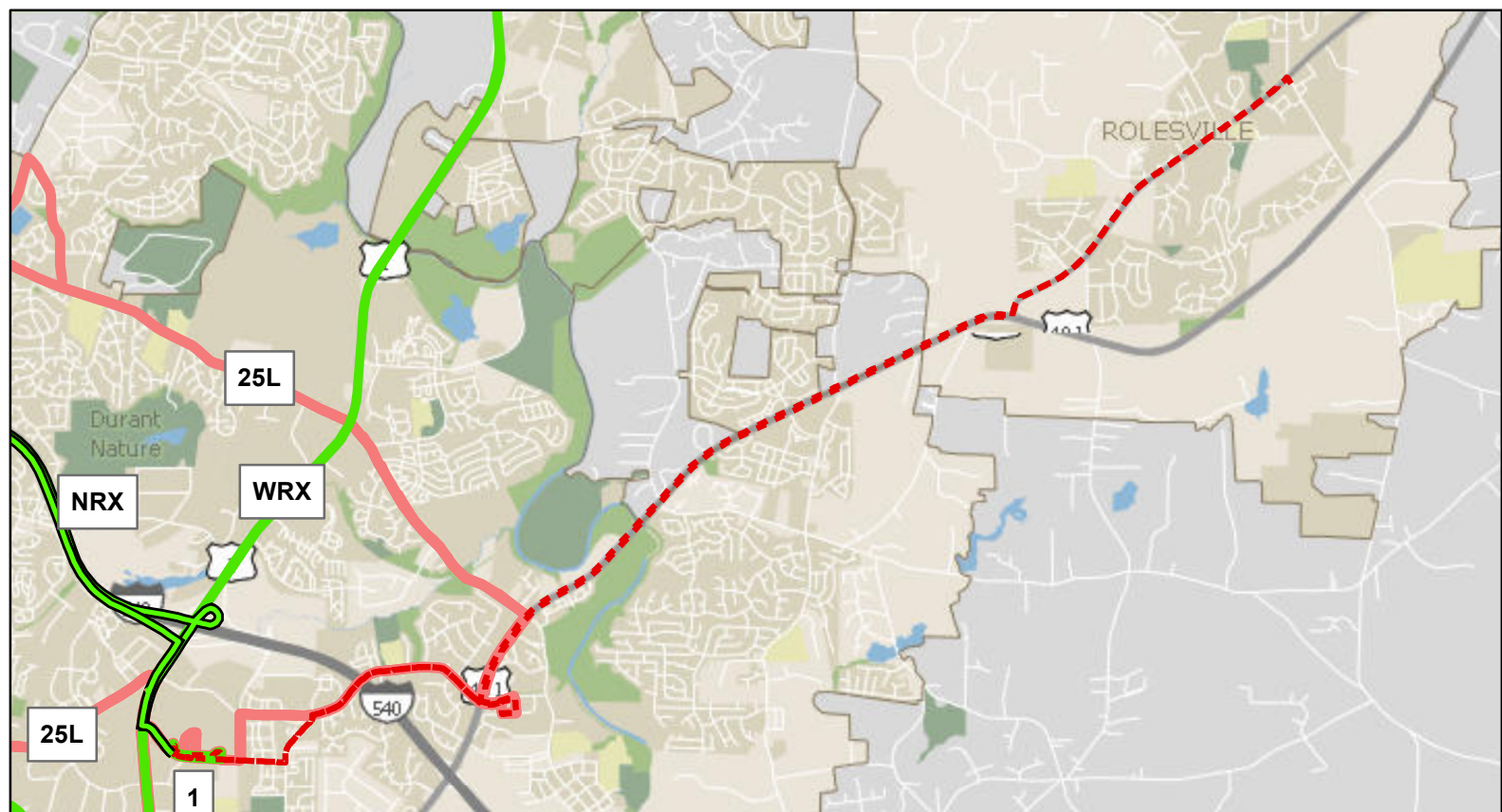
Wake Transit Plan

Proposed Rolesville Route

Proposed Route 401

September 2019 Services

- - - Proposed 401 Rolesville Route
- Proposed GoTriangle Route
- Connecting GoRaleigh Services
- Connecting GoTriangle Services



Map updated April 2019 by City of Raleigh Department of Transportation- Transit Division.
 This map is provided as public information resource and geographic representation. Every reasonable effort has been made to assure the validity and quality of this information. This geographic representation are not legal documents and are not intended to be used as such. The City of Raleigh and GoRaleigh Transit System makes no guarantee, express or implied, as to the accuracy, reliability, utility or completeness of this information. In addition, no liability is assumed either for any errors, omissions, or inaccuracies in the information provided regardless of the cause of such or for any decision made, action taken or not taken by the user in reliance upon this map or information provided herein.