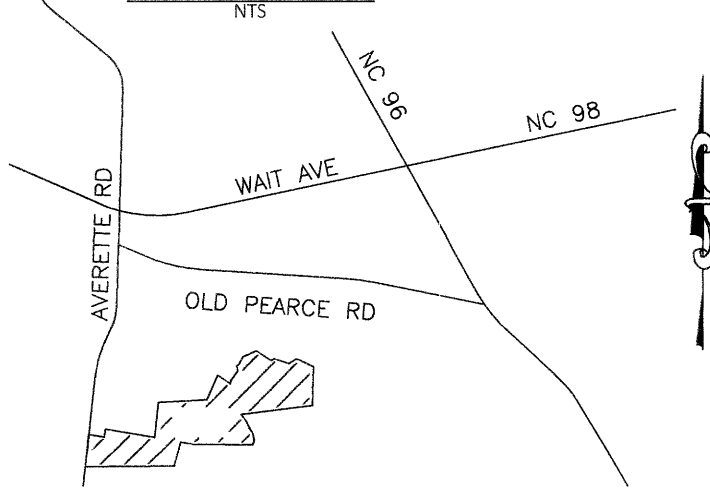


VICINITY MAP



Owner Information:
Owner: D.R. Horton - Terramor, LLC
7208 Falls of Neuse Road, #201
Raleigh, NC, 27615
Zoning District - R40W & RM
Existing Use - Vacant
Watershed - Little River
Pin - 1769470059 Reid - 0014930
DB 18091, Pg 389
BM 2020, Pg 1476-1478

REFERENCES
-DEED BOOK 18091, PAGE 389
-BOOK OF MAPS 2020, PAGE 1476

Table with 2 columns: Site Data, Overall Area, Phase 1 Area, Residual Area, Phase 1 Number of Lots, Phase 1 Smallest Lot Area, Phase 1 Linear Street Length, Pump Station Lot, Phase 1 Lot Area, Phase 1 Future Lot Area, Phase 1 R/W Dedication, Phase 1 Open Space.

I hereby certify that I am the owner of the property shown and described hereon, which is located in the subdivision jurisdiction of the Town of Rolesville and that I hereby adopt this plan of subdivision with my free consent, establish minimum building setback lines, and dedicate all streets, alleys, walks, parks, and other sites and easements to public or private use as noted. Furthermore, I hereby dedicate all sanitary sewer, storm sewer and water lines to the Town of Rolesville.
Owner: D.R. Horton - Terramor, LLC Ben C. Lunnen / Division President
11-22-21
Date
"North Carolina, Wake County.
I, Michael L. Jones, a Notary Public of the County and State aforesaid, certify that Ben C. Lunnen, personally appeared before me this day and acknowledged the execution of the foregoing instrument. Witness my hand and official stamp or seal, this 22 day of November, 2021.
Michael L. Jones
Notary Public
My commission expires 7-20-24
MICHAEL L. JONES
Notary Public
Wake County
North Carolina

"Certificate of Approval for Recording"
I hereby certify that the subdivision plat shown hereon has been found to comply with the Subdivision Regulations of the Town of Rolesville, North Carolina and that this plat has been approved by the Subdivision Administrator of the Town of Rolesville for recording in the Office of the Register of Deeds of Wake County.
Meredith Gruber
Subdivision Administrator, Town of Rolesville
Date 11-23-21
Rolesville, North Carolina

I, Meredith Gruber, hereby certify that all streets, utilities and other required improvements have been installed in a acceptable manner and according to Town specifications and standards in the Subdivision or that guarantees of the installation of the required improvements in an amount and manner satisfactory to the Town of Rolesville has been received and that the filing fees for this plat, in the amount of \$ 695.00 has been paid.
11-23-21 Meredith Gruber
Date Subdivision Administrator

Rolesville, North Carolina
I, Meredith Gruber, Review Officer
of the Town of Rolesville, Certify that the Map or Plat to which this Certification is affixed meets all statutory requirements for recording.
11-23-21 Meredith Gruber
Date Review Officer

- GENERAL NOTES
1. This survey was prepared by Bateman Civil Survey Company, under the supervision of Jeffrey W. Baker, pls.
2. Field equipment used: Trimble r8 gps and Trimble s8 robotic total station.
3. All distances are horizontal ground distances unless otherwise noted.
4. The property lies in Zone "X" per National Flood Insurance Program Flood Insurance Rate Map #3720176900J, dated May 02, 2006.
5. No grid monuments found within 2000'
6. No evidence of cemeteries were observed at the time of survey.
7. This survey was prepared without the benefit of a title report and is subjected to any matters that a full title search would disclose.
8. Areas by coordinate method.

"I, Jeffrey W. Baker, certify that this plat was drawn under my supervision from an actual survey made under my supervision (deed description recorded in Book 18091, page 389); that the boundaries not surveyed are clearly indicated as drawn from information found in Book 2020, page 1476-1478; that the ratio of precision or positional accuracy as calculated is 1:10000+; that this plat was prepared in accordance with G.S. 47-30 as amended. witness my original signature, license number and seal this 22nd day of November, A.D. 2021."

Jeffrey W. Baker
Professional Land Surveyor
License Number-4412

I, Jeffrey W. Baker, Professional Land Surveyor No. L-4412 certify that this survey creates a subdivision of land within the area of a county or municipality that has an ordinance that regulates parcels of land.

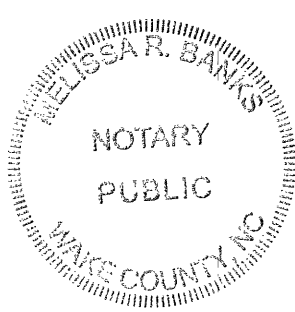
Jeffrey W. Baker, PLS L-4412
11/22/21
date

"North Carolina, Wake County.

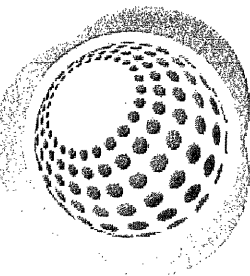
I, Melissa R. Banks, a Notary Public of the County and State aforesaid, certify that Jeffrey W. Baker, a registered land surveyor, personally appeared before me this day and acknowledged the execution of the foregoing instrument. Witness my hand and official stamp or seal, this 22 day of November, 2021.

Melissa R. Banks
Notary Public

My commission expires March 12, 2023



WAKE COUNTY, NC 104
TAMMY L. BRUNNER
REGISTER OF DEEDS
PRESENTED & RECORDED ON
11/23/2021 16:11:35
300K:BN2021 PAGE:02067



Bateman Civil Survey Company
Engineers • Surveyors • Planners
2524 Reliance Avenue, Apex, NC 27539
Phone: 919.577.1080 Fax: 919.577.1081
NCBELS FIRM No. C-2378

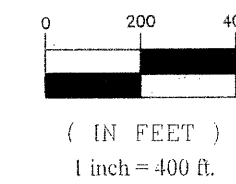
D.R. Horton - Terramor, LLC
7208 Falls of Neuse Road, #201
Raleigh, NC, 27615

FINAL PLAT
CHANDLER'S RIDGE SUBDIVISION
PHASE ONE - LOTS 1-34 & 36-41
Wake Forest Township, Rolesville
Wake County, North Carolina

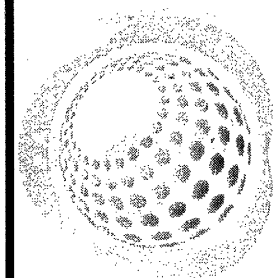
Table with 2 columns: Field Name, Value. Includes: Designed By: N/A, Drawn By: JCH, Checked By: JWB, Scale: N/A, Date: 11/02/2021, Project Number: 200330

- A) Hunt, Pin: 1769058681, Reid: 0169078, DB 17026, Pg 1287, Zoned R1, Use: Single Family
- B) Logan, Pin: 1769150681, Reid: 0169079, DB 18192, Pg 1163, Zoned R1, Use: Single Family
- C) Blackwood, Pin: 1769152651, Reid: 0169080, DB 15721, Pg 644, Zoned R1, Use: Single Family
- D) Strietland, Pin: 1769154631, Reid: 0169081, DB 8134, Pg 460, Zoned R40W, Use: Single Family
- E) Belcher, Pin: 1769156610, Reid: 0169082, DB 14781, Pg 1506, Zoned R40W, Use: Single Family
- F) Onderdonk, Pin: 1769157692, Reid: 0169083, DB 16886, Pg 1732, Zoned R40W, Use: Single Family
- G) W&W Rental Properties Inc, Pin: 1769159670, Reid: 0169084, DB 13269, Pg 1954, Zoned R40W, Use: Vacant
- H) Brown, Pin: 1769251650, Reid: 0169085, DB 10162, Pg 1198, Zoned R40W, Use: Single Family
- I) Burgie, Pin: 1769253630, Reid: 0169086, DB 11316, Pg 2235, Zoned R40W, Use: Single Family
- J) McNamara, Pin: 1769350556, Reid: 00235231, DB 17083, Pg 583, Zoned R2, Use: Single Family
- K) Vierno, Pin: 1769351555, Reid: 0235232, DB 9062, Pg 1929, Zoned R2, Use: Single Family
- L) Doren, Pin: 1769352642, Reid: 0298557, DB 9813, Pg 1166, Zoned SIA, Use: Single Family
- M) Wiggins, Pin: 1769353820, Reid: 0298552, DB 11010, Pg 1756, Zoned SIA, Use: Single Family
- N) Armant, Pin: 1769353910, Reid: 0298551, DB 10584, Pg 1380, Zoned SIA, Use: Single Family
- O) Little, Pin: 1769363022, Reid: 0298550, DB 18375, Pg 392, Zoned SIA, Use: Single Family
- P) Pursler, Pin: 1769362171, Reid: 0298549, DB 9784, Pg 2116, Zoned SIA, Use: Single Family
- Q) Dodson, Pin: 1769362294, Reid: 0298548, DB 17086, Pg 1008, Zoned SIA, Use: Single Family
- R) Tucker, Pin: 1769363370, Reid: 0298547, DB 10599, Pg 913, Zoned SIA, Use: Single Family
- S) Harris, Pin: 1769365207, Reid: 0298546, DB 14433, Pg 2044, Zoned SIA, Use: Single Family
- T) Foster, Pin: 1769365260, Reid: 0298545, DB 9987, Pg 1, Zoned SIA, Use: Single Family

GRAPHIC SCALE



BMI 2020, Pg 1476



Bateman Civil Survey Company
 Engineers • Surveyors • Planners
 2524 Reliance Avenue, Apex, NC 27539
 Phone: 919.577.1080 Fax: 919.577.1081
 NCBELS FIRM No. C-2378

D.R. Horton - Terramor, LLC
 7208 Falls of Neuse Road, #201
 Raleigh, NC, 27615

FINAL PLAT
 CHANDLER'S RIDGE SUBDIVISION
 PHASE ONE - LOTS 1-34 & 36-41
 Wake Forest Township, Rolesville
 Wake County, North Carolina

Designed By: N/A
 Drawn By: JCH
 Checked By: JWB
 Scale: N/A
 Date: 11/02/2021
 Project Number: 200330

SHEET
2 OF 15

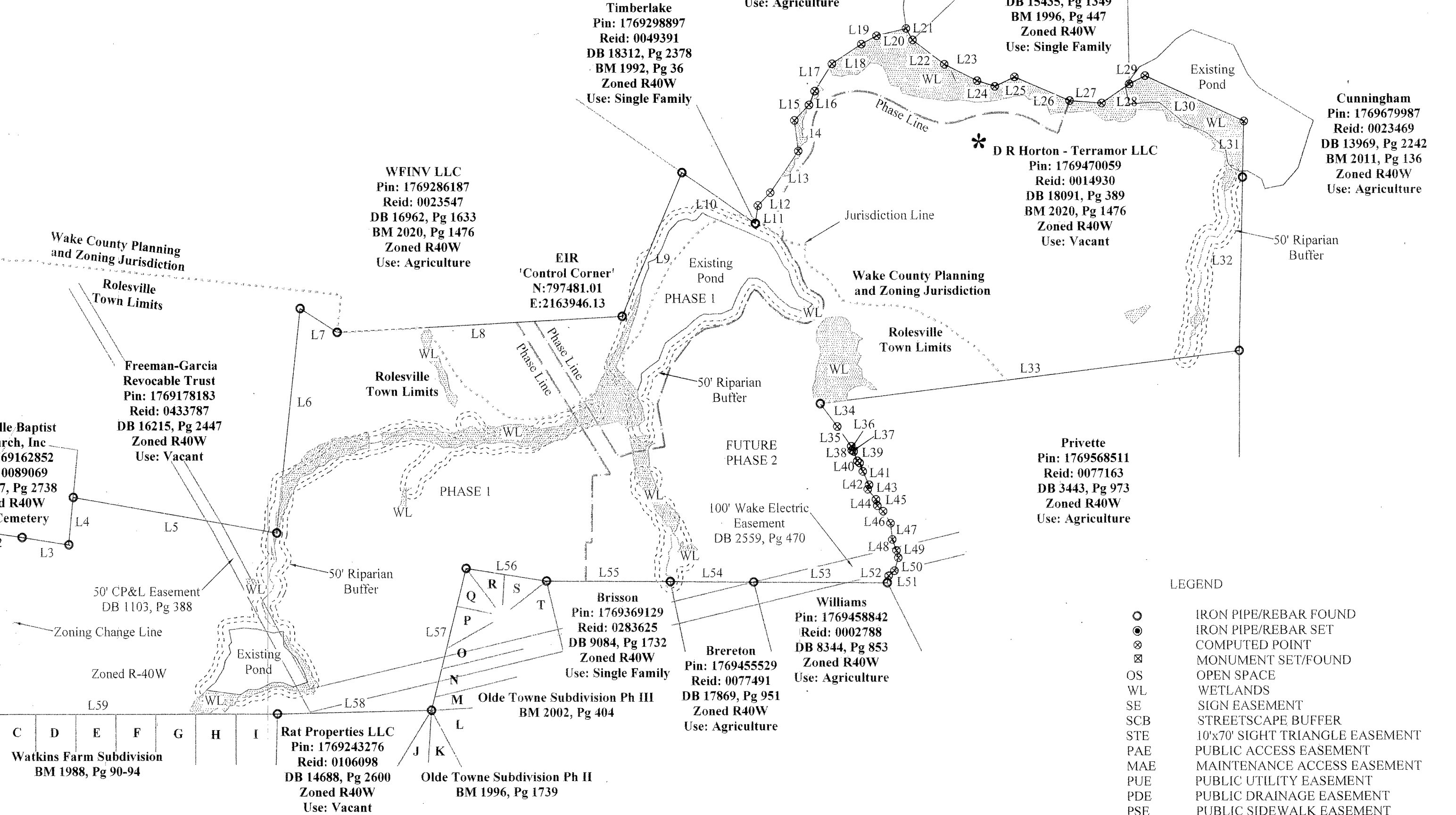
Averette Road - SR 1945
 60' Public R/W
 BM 2015, Pg 1905

Jones Dairy Road SR-2053
 60' Public R/W
 BM 1983, Pg 571

Chalk Road SR-2054
 60' Public R/W
 BM 1986, Pg 380

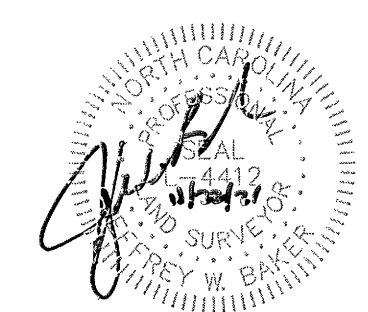
Young Street - SR 1945
 60' Public R/W
 BM 2006, Pg 2049

Teresa Drive
 60' Public R/W
 BM 1971, Pg 66



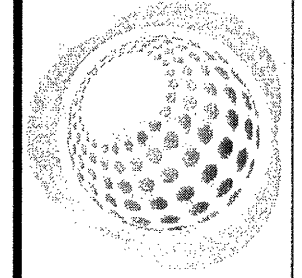
LEGEND

- IRON PIPE/REBAR FOUND
- IRON PIPE/REBAR SET
- ⊗ COMPUTED POINT
- ⊗ MONUMENT SET/FOUND
- OS OPEN SPACE
- WL WETLANDS
- SE SIGN EASEMENT
- SCB STREETScape BUFFER
- STE 10'x70' SIGHT TRIANGLE EASEMENT
- PAE PUBLIC ACCESS EASEMENT
- MAE MAINTENANCE ACCESS EASEMENT
- PUE PUBLIC UTILITY EASEMENT
- PDE PUBLIC DRAINAGE EASEMENT
- PSE PUBLIC SIDEWALK EASEMENT
- WLE WATER LINE EASEMENT
- CORUE CITY OF RALEIGH UTILITY EASEMENT
- CORSSE CITY OF RALEIGH SANITARY SEWER EASEMENT
- CORFM CITY OF RALEIGH FORCE MAIN EASEMENT
- TORGE TOWN OF ROLESVILLE GREENWAY EASEMENT
- DELPE DUKE ENERGY LIGHT POLE EASEMENT
- PRDE PRIVATE DRAINAGE EASEMENT
- # STREET ADDRESS
- NEW LOT - R/W LINE
- - - EXISTING LOT - R/W LINE
- - - EASEMENT LINE
- - - JURISDICTION LINE
- - - TOP OF BANK - WETLAND LINE
- - - BUFFER LINE
- - - PHASE LINE
- - - ZONING CHANGE LINE



WAKE COUNTY, NC 105
 TAMMY L. BRUNNER
 REGISTER OF DEEDS
 PRESENTED & RECORDED ON
 11/23/2021 16:11:35

300K:BM2021 PAGE:02068



Bateman Civil Survey Company
 Engineers • Surveyors • Planners
 2524 Reliance Avenue, Apex, NC 27539
 Phone: 919.577.1080 Fax: 919.577.1081
 NCBELS FIRM No. C-2378

D.R. Horton - Terramor, LLC
 7208 Falls of Neuse Road, #201
 Raleigh, NC, 27615

FINAL PLAT
CHANDLER'S RIDGE SUBDIVISION
PHASE ONE - LOTS 1-34 & 36-41
 Wake Forest Township, Rolesville
 Wake County, North Carolina

Designed By: N/A
 Drawn By: JCH
 Checked By: JWB
 Scale: 1"=60'
 Date: 11/02/2021
 Project Number: 200330

SHEET
4 OF 15

LEGEND

- IRON PIPE/REBAR FOUND
- ⊙ IRON PIPE/REBAR SET
- ⊗ COMPUTED POINT
- ⊠ MONUMENT SET/FOUND
- OS OPEN SPACE
- WL WETLANDS
- SE SIGN EASEMENT
- SCB STREETScape BUFFER
- STE 10'x70' SIGHT TRIANGLE EASEMENT
- PAE PUBLIC ACCESS EASEMENT
- MAE MAINTENANCE ACCESS EASEMENT
- PUE PUBLIC UTILITY EASEMENT
- PDE PUBLIC DRAINAGE EASEMENT
- PSE PUBLIC SIDEWALK EASEMENT
- WLE WATER LINE EASEMENT
- CORUE CITY OF RALEIGH UTILITY EASEMENT
- CORSSE CITY OF RALEIGH SANITARY SEWER EASEMENT
- CORFM CITY OF RALEIGH FORCE MAIN EASEMENT
- TORGE TOWN OF ROLESVILLE GREENWAY EASEMENT
- DELPE DUKE ENERGY LIGHT POLE EASEMENT
- PRDE PRIVATE DRAINAGE EASEMENT
- # STREET ADDRESS
- NEW LOT - R/W LINE
- EXISTING LOT - R/W LINE
- EASEMENT LINE
- JURISDICTION LINE
- TOP OF BANK - WETLAND LINE
- BUFFER LINE
- PHASE LINE
- ZONING CHANGE LINE

NOTE:
 SEE SHEET 5 FOR ANY EASEMENT MEETS
 & BOUNDS NOT DEPICTED ON THIS SHEET

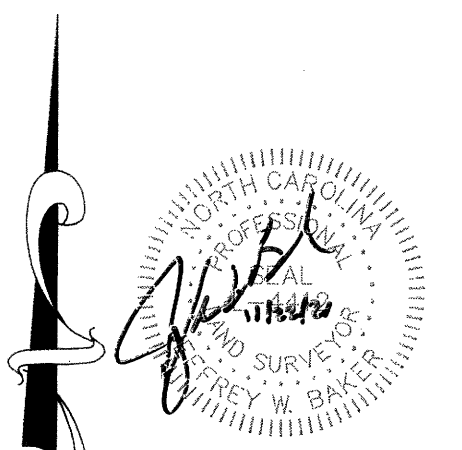
R-2 ZONING SETBACK DATA:
 FRONT YARD: 22.5'
 SIDE YARD: 9'
 CORNER YARD: 16.5'
 REAR YARD: 19'

R-40W ZONING SETBACK DATA:
 FRONT YARD: 38'
 SIDE YARD: 15'
 CORNER YARD: 15'
 REAR YARD: 23'

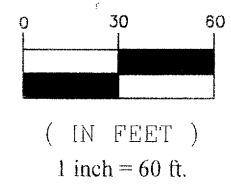
WAKE COUNTY, NC 107
 TAMMY L. BRUNNER
 REGISTER OF DEEDS
 PRESENTED & RECORDED ON
 11/23/2021 16:11:35



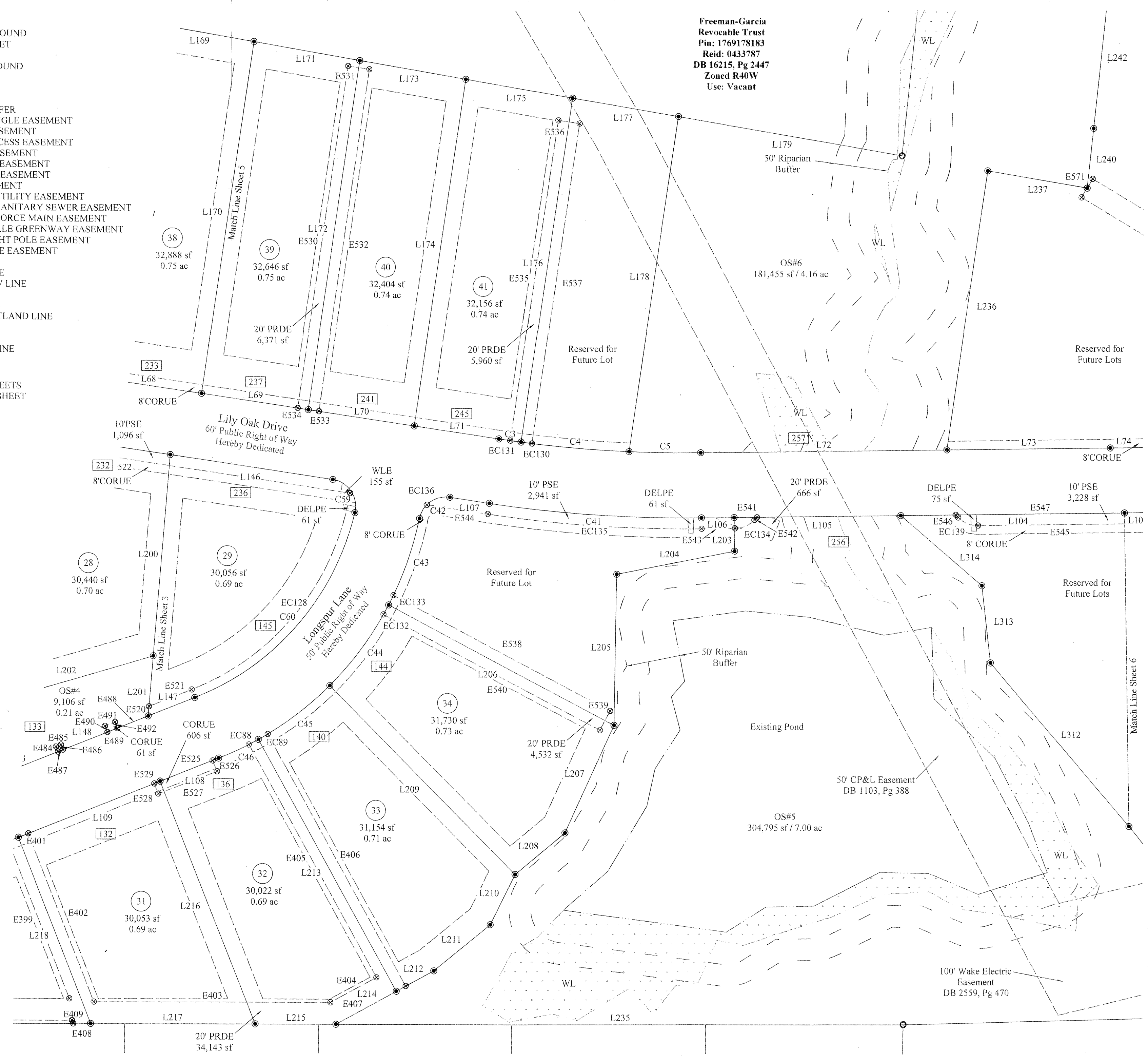
BOOK: BM2021 PAGE: 02070



GRAPHIC SCALE



BM2020, Pg 1476



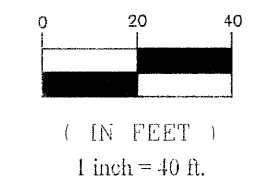
Freeman-Garcia
 Revocable Trust
 Pin: 1769178183
 Reid: 0433787
 DB 16215, Pg 2447
 Zoned R40W
 Use: Vacant

100' Wake Electric
 Easement
 DB 2559, Pg 470

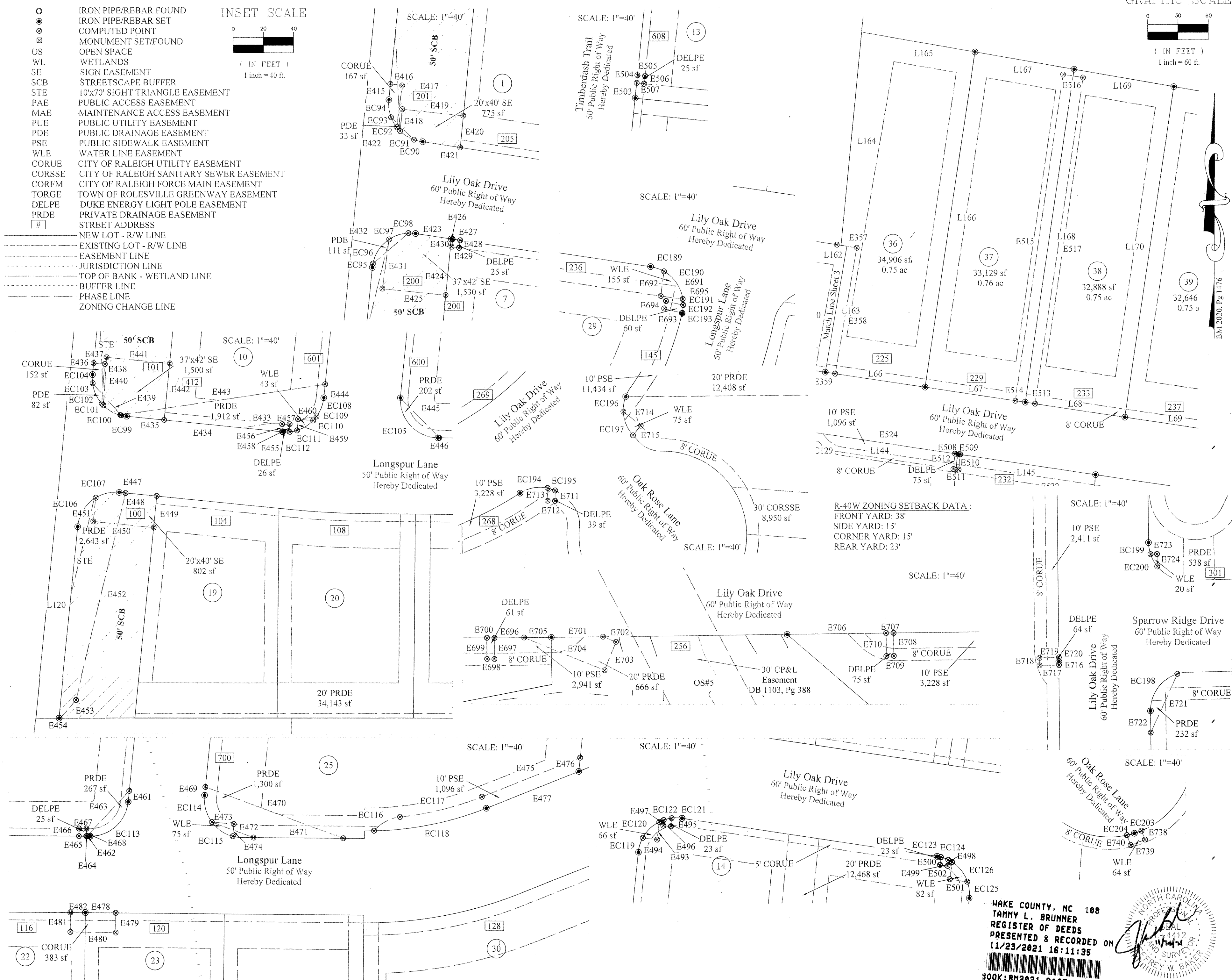
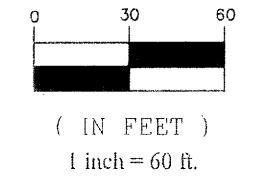
LEGEND

- IRON PIPE/REBAR FOUND
- IRON PIPE/REBAR SET
- ⊗ COMPUTED POINT
- ⊗ MONUMENT SET/FOUND
- OS OPEN SPACE
- WL WETLANDS
- SE SIGN EASEMENT
- SCB STREETScape BUFFER
- STE 10'x70' SIGHT TRIANGLE EASEMENT
- PAE PUBLIC ACCESS EASEMENT
- MAE MAINTENANCE ACCESS EASEMENT
- PUE PUBLIC UTILITY EASEMENT
- PDE PUBLIC DRAINAGE EASEMENT
- PSE PUBLIC SIDEWALK EASEMENT
- WLE WATER LINE EASEMENT
- CORUE CITY OF RALEIGH UTILITY EASEMENT
- CORSSE CITY OF RALEIGH SANITARY SEWER EASEMENT
- CORFM CITY OF RALEIGH FORCE MAIN EASEMENT
- TORGE TOWN OF ROLESVILLE GREENWAY EASEMENT
- DELPE DUKE ENERGY LIGHT POLE EASEMENT
- PRDE PRIVATE DRAINAGE EASEMENT
- # STREET ADDRESS
- NEW LOT - R/W LINE
- EXISTING LOT - R/W LINE
- EASEMENT LINE
- JURISDICTION LINE
- TOP OF BANK - WETLAND LINE
- BUFFER LINE
- PHASE LINE
- ZONING CHANGE LINE

INSET SCALE



GRAPHIC SCALE



Bateman Civil Survey Company
 Engineers Surveyors Planners
 2524 Reliance Avenue, Apex, NC 27539
 Phone: 919.577.1080 Fax: 919.577.1081
 NCBEELS FIRM No. C-2378

D.R. Horton - Terramor, LLC
 7208 Falls of Neuse Road, #201
 Raleigh, NC, 27615

FINAL PLAT
CHANDLER'S RIDGE SUBDIVISION
PHASE ONE - LOTS 1-34 & 36-41
 Wake Forest Township, Rolesville
 Wake County, North Carolina

Designed By: N/A
 Drawn By: JCH
 Checked By: JWB
 Scale: Plan 1"=60'
 Date: 11/02/2021
 Project Number: 2003330

WAKE COUNTY, NC 108
 TAMMY L. BRUNNER
 REGISTER OF DEEDS
 PRESENTED & RECORDED ON
 11/23/2021 16:11:35



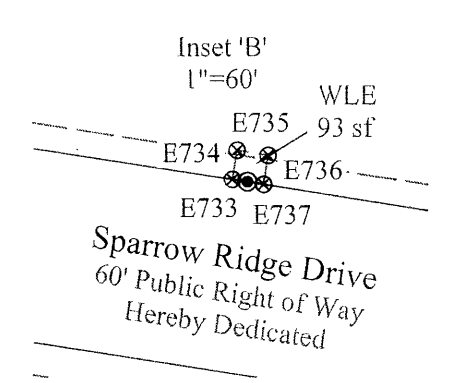
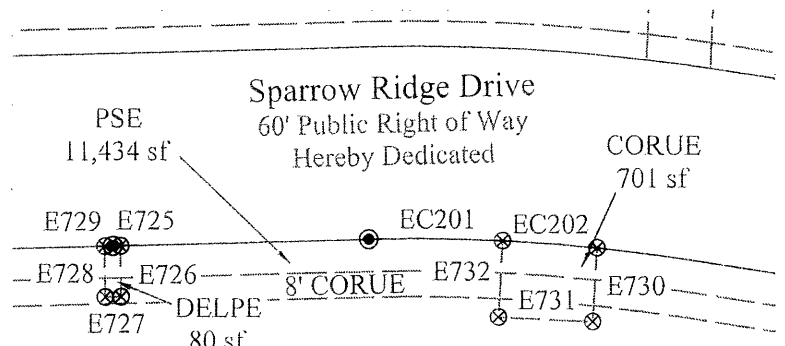
LEGEND

- IRON PIPE/REBAR FOUND
- ⊙ IRON PIPE/REBAR SET
- ⊕ COMPUTED POINT
- ⊗ MONUMENT SET/FOUND
- OS OPEN SPACE
- WL WETLANDS
- SE SIGN EASEMENT
- SCB STREETScape BUFFER
- STE 10'x70' SIGHT TRIANGLE EASEMENT
- PAE PUBLIC ACCESS EASEMENT
- MAE MAINTENANCE ACCESS EASEMENT
- PUE PUBLIC UTILITY EASEMENT
- PDE PUBLIC DRAINAGE EASEMENT
- PSE PUBLIC SIDEWALK EASEMENT
- WLE WATER LINE EASEMENT
- CORUE CITY OF RALEIGH UTILITY EASEMENT
- CORSSE CITY OF RALEIGH SANITARY SEWER EASEMENT
- CORFM CITY OF RALEIGH FORCE MAIN EASEMENT
- TORGE TOWN OF ROLESVILLE GREENWAY EASEMENT
- DELPE DUKE ENERGY LIGHT POLE EASEMENT
- PRDE PRIVATE DRAINAGE EASEMENT
- # STREET ADDRESS
- NEW LOT - R/W LINE
- EXISTING LOT - R/W LINE
- EASEMENT LINE
- JURISDICTION LINE
- TOP OF BANK - WETLAND LINE
- BUFFER LINE
- PHASE LINE
- ZONING CHANGE LINE

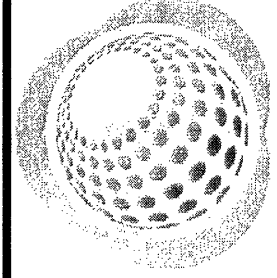
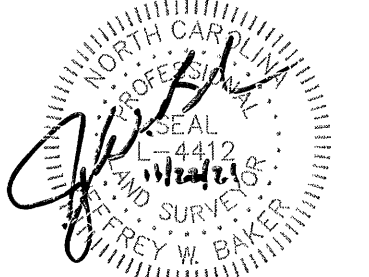
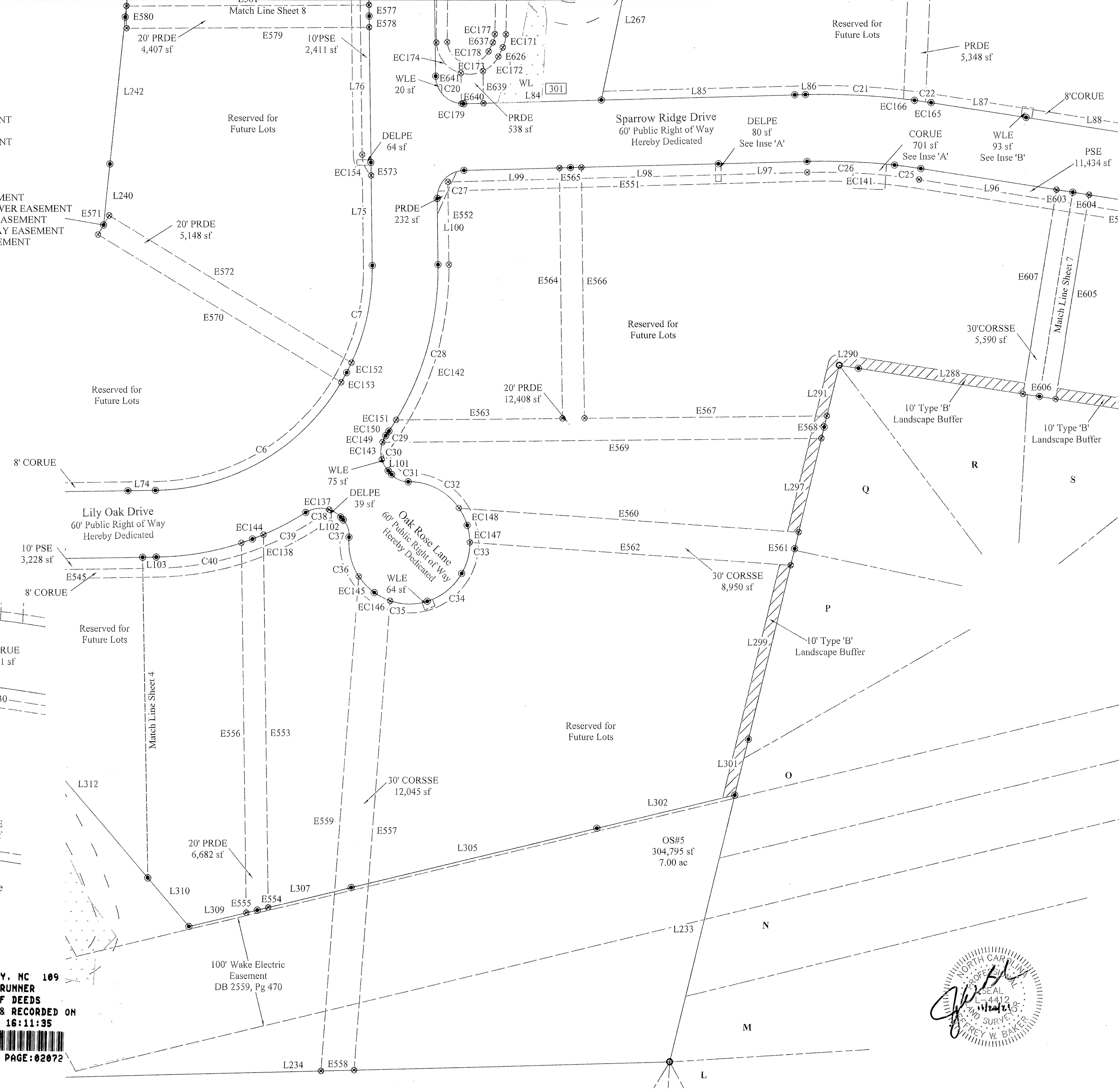
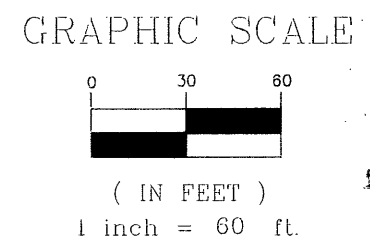
NOTE:
SEE SHEET 5 FOR ANY EASEMENT MEETS
& BOUNDS NOT DEPICTED ON THIS SHEET

R-2 ZONING SETBACK DATA:
FRONT YARD: 22.5'
SIDE YARD: 9'
CORNER YARD: 16.5'
REAR YARD: 19'

R-40W ZONING SETBACK DATA:
FRONT YARD: 38'
SIDE YARD: 15'
CORNER YARD: 15'
REAR YARD: 23'



WAKE COUNTY, NC 109
TAMMY L. BRUNNER
REGISTER OF DEEDS
PRESENTED & RECORDED ON
11/23/2021 16:11:35



Bateman Civil Survey Company
Engineers • Surveyors • Planners
2524 Reliance Avenue, Apex, NC 27539
Phone: 919.577.1080 Fax: 919.577.1081
NCBELS FRM No. C-2378

D.R. Horton - Terramor, LLC
7208 Falls of Neuse Road, #201
Raleigh, NC, 27615

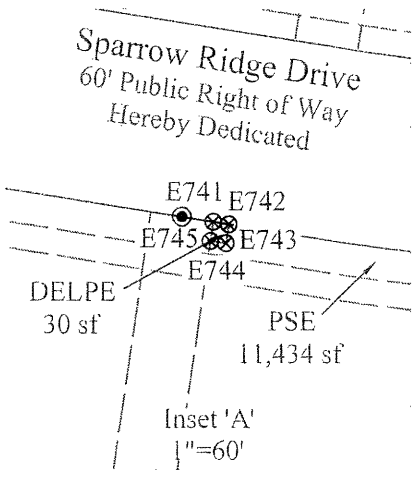
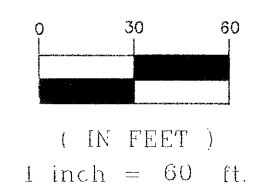
FINAL PLAT
CHANDLER'S RIDGE SUBDIVISION
PHASE ONE - LOTS 1-34 & 36-41
Wake Forest Township, Rolesville
Wake County, North Carolina

Designed By: N/A
Drawn By: JCH
Checked By: JWB
Scale: 1"=60'
Date: 11/02/2021
Project Number: 200330

LEGEND

- IRON PIPE/REBAR FOUND
- IRON PIPE/REBAR SET
- ⊗ COMPUTED POINT
- ⊠ MONUMENT SET/FOUND
- OS OPEN SPACE
- WL WETLANDS
- SE SIGN EASEMENT
- SCB STREETSCAPE BUFFER
- STE 10'x70' SIGHT TRIANGLE EASEMENT
- PAB PUBLIC ACCESS EASEMENT
- MAE MAINTENANCE ACCESS EASEMENT
- PUE PUBLIC UTILITY EASEMENT
- PDE PUBLIC DRAINAGE EASEMENT
- PSE PUBLIC SIDEWALK EASEMENT
- WLE WATER LINE EASEMENT
- CORUE CITY OF RALEIGH UTILITY EASEMENT
- CORSSE CITY OF RALEIGH SANITARY SEWER EASEMENT
- CORFM CITY OF RALEIGH FORCE MAIN EASEMENT
- TORGE TOWN OF ROLESVILLE GREENWAY EASEMENT
- DELPE DUKE ENERGY LIGHT POLE EASEMENT
- PRDE PRIVATE DRAINAGE EASEMENT
- # STREET ADDRESS
- NEW LOT - R/W LINE
- EXISTING LOT - R/W LINE
- EASEMENT LINE
- JURISDICTION LINE
- TOP OF BANK - WETLAND LINE
- BUFFER LINE
- PHASE LINE
- ZONING CHANGE LINE

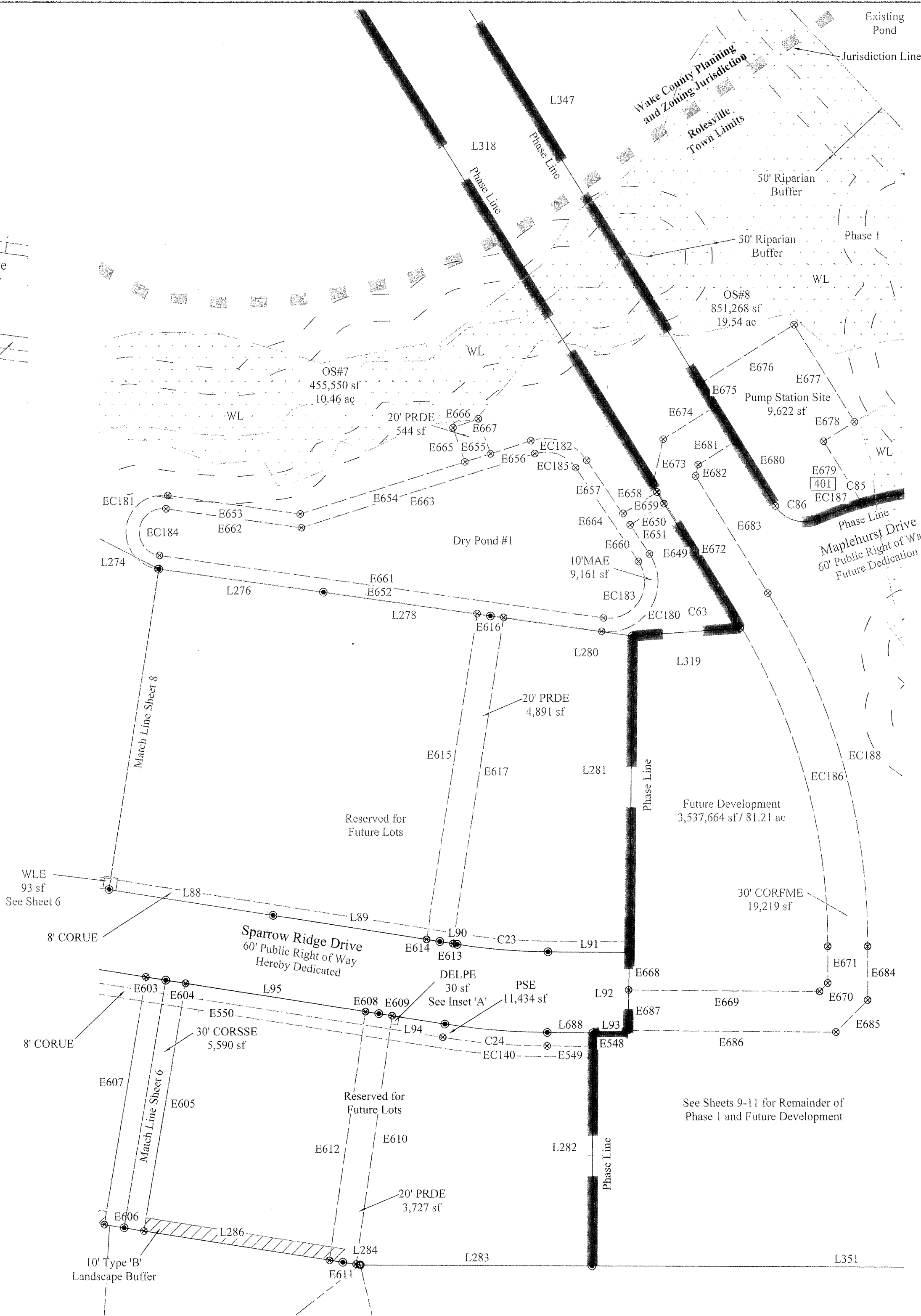
GRAPHIC SCALE



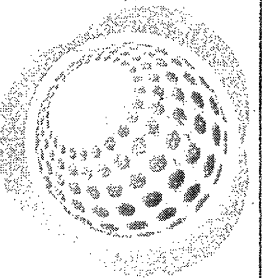
NOTE:
SEE SHEET 5 FOR ANY EASEMENT MEETS
& BOUNDS NOT DEPICTED ON THIS SHEET

R-2 ZONING SETBACK DATA:
FRONT YARD: 22.5'
SIDE YARD: 9'
CORNER YARD: 16.5'
REAR YARD: 19'

R-40W ZONING SETBACK DATA:
FRONT YARD: 38'
SIDE YARD: 15'
CORNER YARD: 15'
REAR YARD: 23'



WAKE COUNTY, NC 110
TAMMY L. BRUMMER
REGISTER OF DEEDS
PRESENTED & RECORDED ON
11/23/2021 16:11:35
300K:BM2021 PAGE:02073



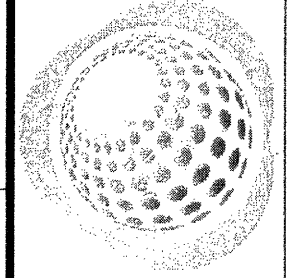
Bateman Civil Survey Company
Engineers • Surveyors • Planners
2624 Reliance Avenue, Apex, NC 27039
Phone: 919.577.1080 Fax: 919.577.1081
NCBELS FIRM No. C-2378

D.R. Horton - Terramor, LLC
7208 Falls of Neuse Road, #201
Raleigh, NC, 27615

FINAL PLAT
CHANDLER'S RIDGE SUBDIVISION
PHASE ONE - LOTS 1-34 & 36-41
Wake Forest Township, Rolesville
Wake County, North Carolina

Designed By: N/A
Drawn By: JCH
Checked By: JWB
Scale: 1"=60'
Date: 11/02/2021
Project Number: 200330

**SHEET
7 OF 15**



Bateman Civil Survey Company
 Engineers • Surveyors • Planners
 2524 Reliance Avenue, Apex, NC 27539
 Phone: 919.577.1080 Fax: 919.577.1081
 NCBELS FIRM No. C-2378

D.R. Horton - Terramor, LLC
 7208 Falls of Neuse Road, #201
 Raleigh, NC, 27615

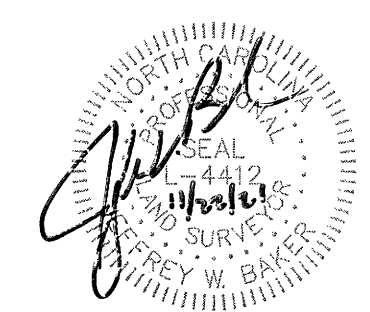
FINAL PLAT
 CHANDLER'S RIDGE SUBDIVISION
 PHASE ONE - LOTS 1-34 & 36-41
 Wake Forest Township, Rolesville
 Wake County, North Carolina

Designed By: N/A
 Drawn By: JCH
 Checked By: JWB
 Scale: 1"=60'
 Date: 11/02/2021
 Project Number: 200330

SHEET
8 OF 15

WAKE COUNTY, NC 111
 TAMMY L. BRUNNER
 REGISTER OF DEEDS
 PRESENTED & RECORDED ON
 11/23/2021 16:11:35
 BOOK: BM2021 PAGE: 02074

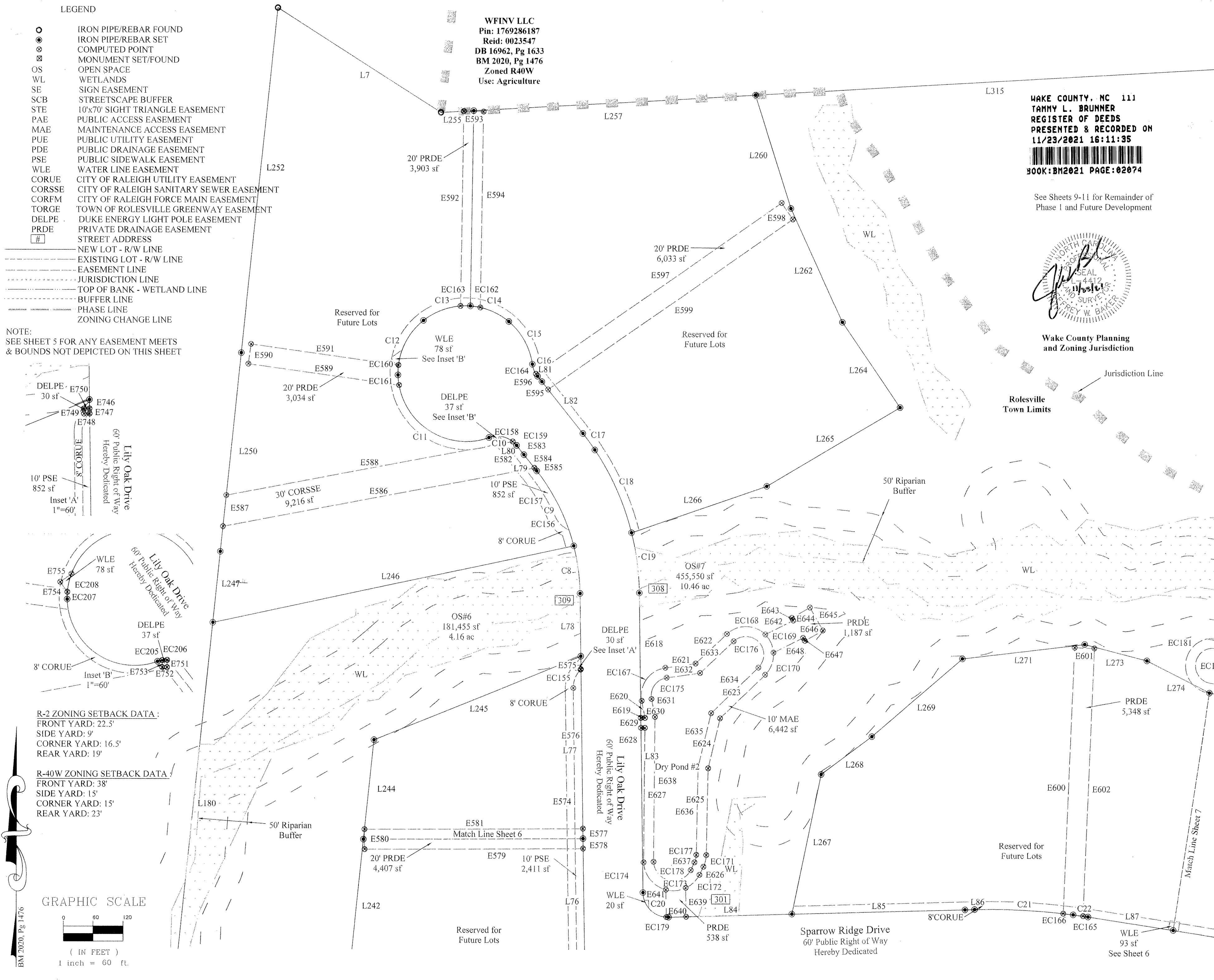
See Sheets 9-11 for Remainder of
 Phase 1 and Future Development



Wake County Planning
 and Zoning Jurisdiction

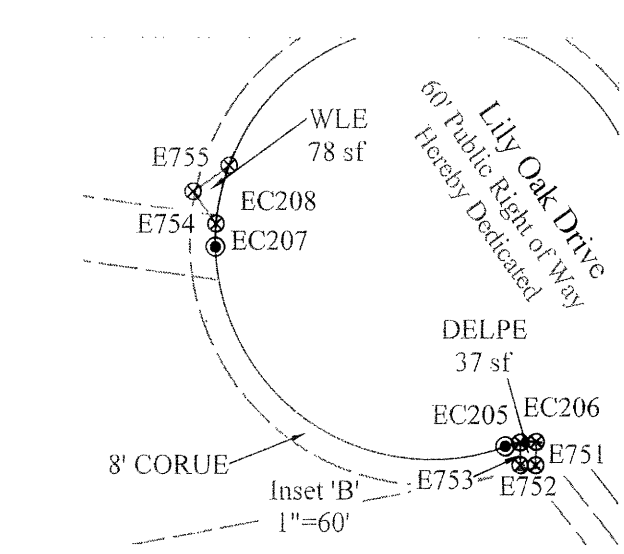
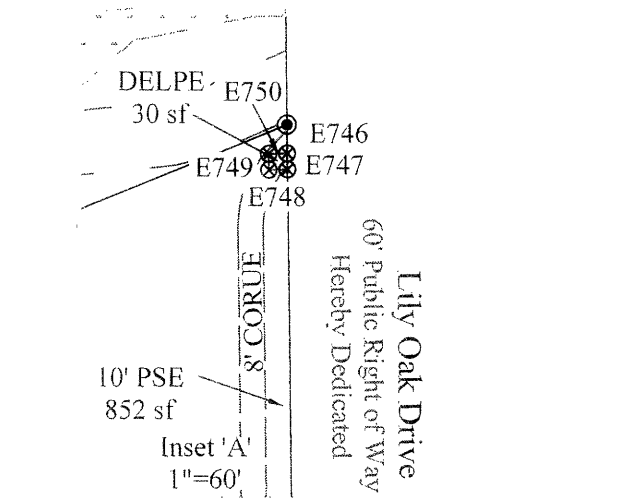
Rolesville
 Town Limits

WFINV LLC
 Pin: 1769286187
 Reid: 0023547
 DB 16962, Pg 1633
 BM 2020, Pg 1476
 Zoned R40W
 Use: Agriculture



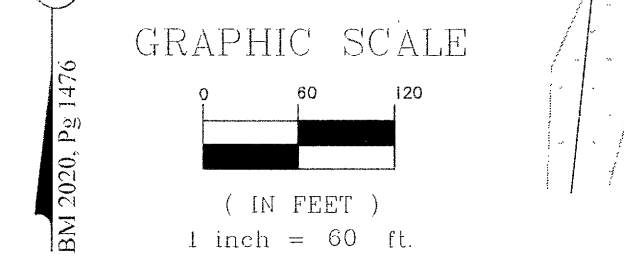
- LEGEND**
- IRON PIPE/REBAR FOUND
 - ⊙ IRON PIPE/REBAR SET
 - ⊗ COMPUTED POINT
 - ⊠ MONUMENT SET/FOUND
 - OS OPEN SPACE
 - WL WETLANDS
 - SE SIGN EASEMENT
 - SCB STREETScape BUFFER
 - STE 10'x70' SIGHT TRIANGLE EASEMENT
 - PAB PUBLIC ACCESS EASEMENT
 - MAE MAINTENANCE ACCESS EASEMENT
 - PUE PUBLIC UTILITY EASEMENT
 - PDE PUBLIC DRAINAGE EASEMENT
 - PSE PUBLIC SIDEWALK EASEMENT
 - WLE WATER LINE EASEMENT
 - CORUE CITY OF RALEIGH UTILITY EASEMENT
 - CORSSE CITY OF RALEIGH SANITARY SEWER EASEMENT
 - CORFM CITY OF RALEIGH FORCE MAIN EASEMENT
 - TORGE TOWN OF ROLESVILLE GREENWAY EASEMENT
 - DELPE DUKE ENERGY LIGHT POLE EASEMENT
 - PRDE PRIVATE DRAINAGE EASEMENT
 - # STREET ADDRESS
 - NEW LOT - R/W LINE
 - EXISTING LOT - R/W LINE
 - EASEMENT LINE
 - JURISDICTION LINE
 - TOP OF BANK - WETLAND LINE
 - BUFFER LINE
 - PHASE LINE
 - ZONING CHANGE LINE

NOTE:
 SEE SHEET 5 FOR ANY EASEMENT MEETS
 & BOUNDS NOT DEPICTED ON THIS SHEET



R-2 ZONING SETBACK DATA:
 FRONT YARD: 22.5'
 SIDE YARD: 9'
 CORNER YARD: 16.5'
 REAR YARD: 19'

R-40W ZONING SETBACK DATA:
 FRONT YARD: 38'
 SIDE YARD: 15'
 CORNER YARD: 15'
 REAR YARD: 23'



BM 2020, Pg 1476

GRAPHIC SCALE



(IN FEET)
1 inch = 100 ft.

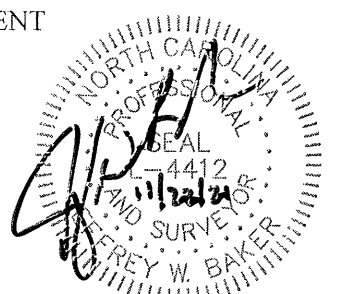
BM 2020, Pg 1476

WFINV LLC
Pin: 1769286187
Reid: 0023547
DB 16962, Pg 1633
BM 2020, Pg 1476
Zoned R40W
Use: Agriculture

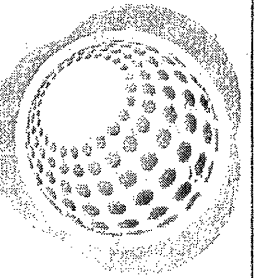
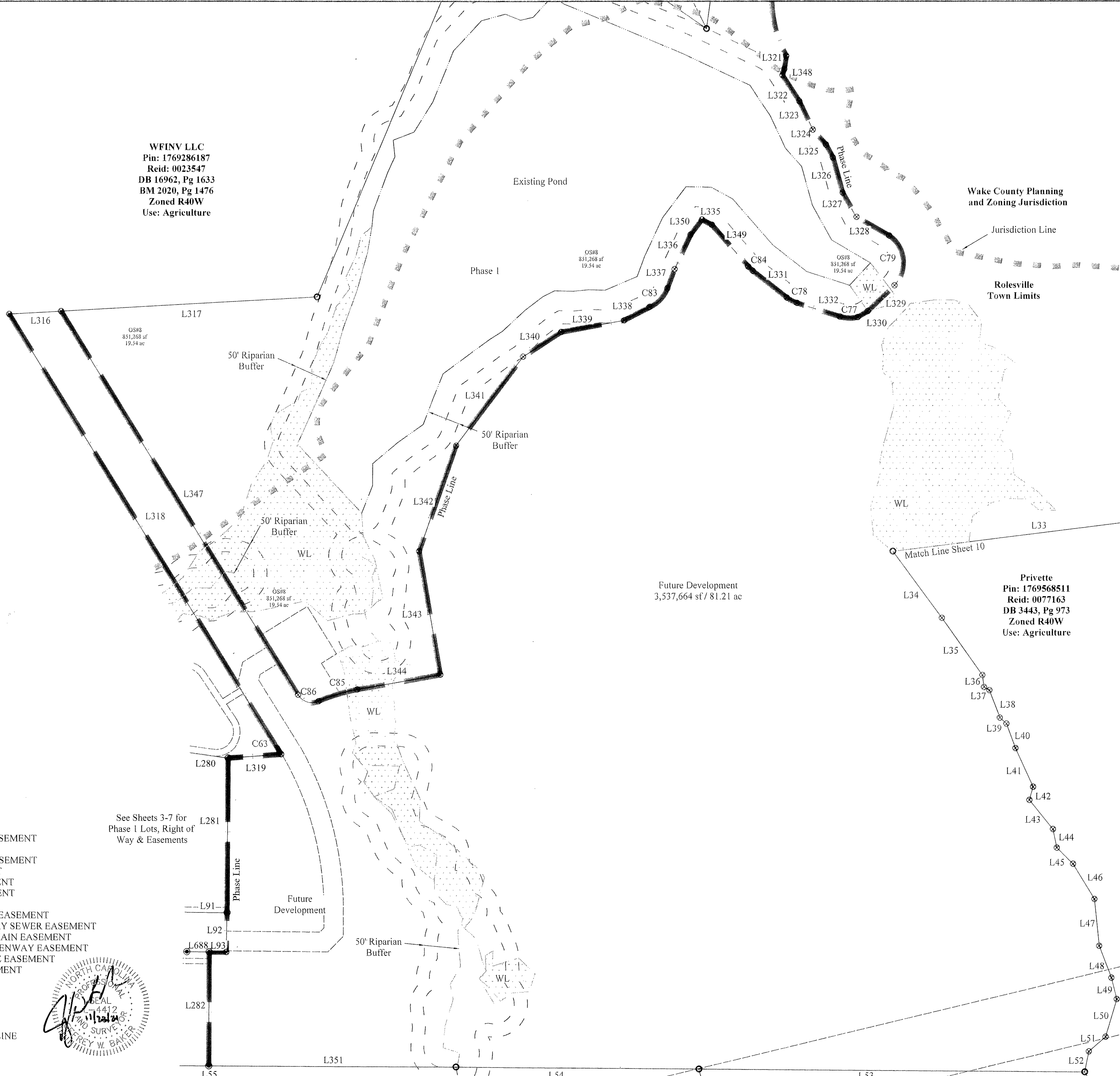
WAKE COUNTY, NC 112
TAMMY L. BRUNNER
REGISTER OF DEEDS
PRESENTED & RECORDED ON
11/23/2021 16:11:35
300K:BM2021 PAGE:02075

LEGEND

- IRON PIPE/REBAR FOUND
- ⊙ IRON PIPE/REBAR SET
- ⊗ COMPUTED POINT
- ⊠ MONUMENT SET/FOUND
- OS OPEN SPACE
- WL WETLANDS
- SE SIGN EASEMENT
- SCB STREETScape BUFFER
- STE 10'x70' SIGHT TRIANGLE EASEMENT
- PAE PUBLIC ACCESS EASEMENT
- MAE MAINTENANCE ACCESS EASEMENT
- PUE PUBLIC UTILITY EASEMENT
- PDE PUBLIC DRAINAGE EASEMENT
- PSE PUBLIC SIDEWALK EASEMENT
- WLE WATER LINE EASEMENT
- CORUE CITY OF RALEIGH UTILITY EASEMENT
- CORSSE CITY OF RALEIGH SANITARY SEWER EASEMENT
- CORFM CITY OF RALEIGH FORCE MAIN EASEMENT
- TORGE TOWN OF ROLESVILLE GREENWAY EASEMENT
- DELPE DUKE ENERGY LIGHT POLE EASEMENT
- PRDE PRIVATE DRAINAGE EASEMENT
- # STREET ADDRESS
- NEW LOT - R/W LINE
- EXISTING LOT - R/W LINE
- EASEMENT LINE
- JURISDICTION LINE
- TOP OF BANK - WETLAND LINE
- BUFFER LINE
- PHASE LINE
- ZONING CHANGE LINE



See Sheets 3-7 for
Phase 1 Lots, Right of
Way & Easements



Bateman Civil Survey Company
Engineers • Surveyors • Planners
2524 Reliance Avenue, Apex, NC 27539
Phone: 919.577.1080 Fax: 919.577.1081
NCBELS FIRM No. C-2376

D.R. Horton - Terramor, LLC
7208 Falls of Neuse Road, #201
Raleigh, NC, 27615

FINAL PLAT
CHANDLER'S RIDGE SUBDIVISION
PHASE ONE - LOTS 1-34 & 36-41
Wake Forest Township, Rolesville
Wake County, North Carolina

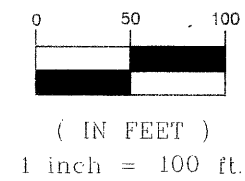
Designed By: N/A
Drawn By: JCH
Checked By: JWB
Scale: 1"=100'
Date: 11/02/2021
Project Number: 200330

**SHEET
9 OF 15**

LEGEND

- IRON PIPE/REBAR FOUND
- ⊙ IRON PIPE/REBAR SET
- ⊗ COMPUTED POINT
- ⊗ MONUMENT SET/FOUND
- OS OPEN SPACE
- WL WETLANDS
- SE SIGN EASEMENT
- SCB STREETSCAPE BUFFER
- STE 10'x70' SIGHT TRIANGLE EASEMENT
- PAE PUBLIC ACCESS EASEMENT
- MAE MAINTENANCE ACCESS EASEMENT
- PUE PUBLIC UTILITY EASEMENT
- PDE PUBLIC DRAINAGE EASEMENT
- PSE PUBLIC SIDEWALK EASEMENT
- WLE WATER LINE EASEMENT
- CORUE CITY OF RALEIGH UTILITY EASEMENT
- CORSSE CITY OF RALEIGH SANITARY SEWER EASEMENT
- CORFM CITY OF RALEIGH FORCE MAIN EASEMENT
- TORGE TOWN OF ROLESVILLE GREENWAY EASEMENT
- DELPE DUKE ENERGY LIGHT POLE EASEMENT
- PRDE PRIVATE DRAINAGE EASEMENT
- # STREET ADDRESS
- NEW LOT - R/W LINE
- EXISTING LOT - R/W LINE
- EASEMENT LINE
- JURISDICTION LINE
- TOP OF BANK - WETLAND LINE
- BUFFER LINE
- PHASE LINE
- ZONING CHANGE LINE

GRAPHIC SCALE



BM 2020, Pg 1476

Alexander Family Investments LLC
 Pin: 1860307638
 Reid: 0053754
 DB 8774, Pg 1944
 Zoned R40W
 Use: Agriculture

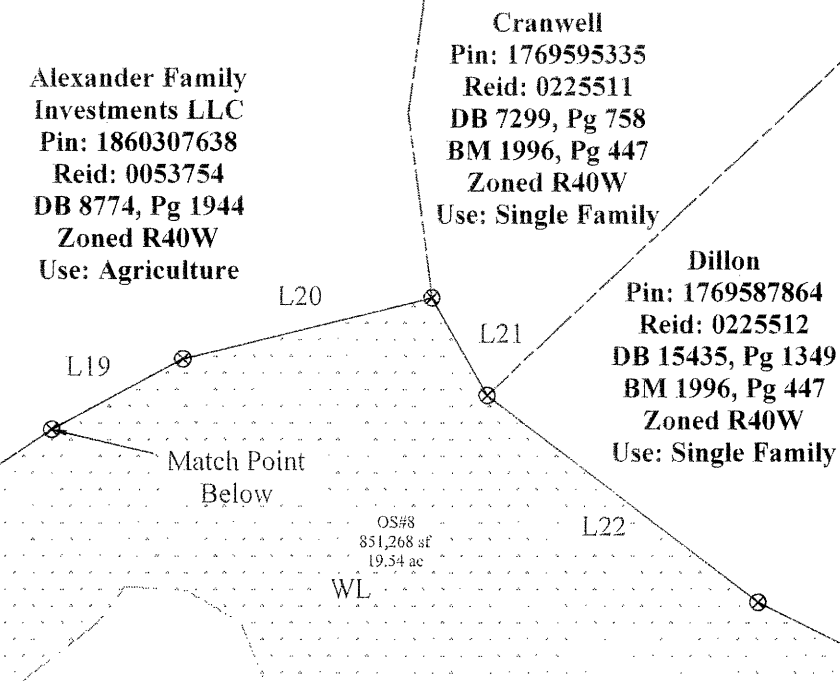
Timberlake
 Pin: 1769298897
 Reid: 0049391
 DB 18312, Pg 2378
 BM 1992, Pg 36
 Zoned R40W
 Use: Single Family

WFINV LLC
 Pin: 1769286187
 Reid: 0023547
 DB 16962, Pg 1633
 BM 2020, Pg 1476
 Zoned R40W
 Use: Agriculture

Alexander Family Investments LLC
 Pin: 1860307638
 Reid: 0053754
 DB 8774, Pg 1944
 Zoned R40W
 Use: Agriculture

Cranwell
 Pin: 1769595335
 Reid: 0225511
 DB 7299, Pg 758
 BM 1996, Pg 447
 Zoned R40W
 Use: Single Family

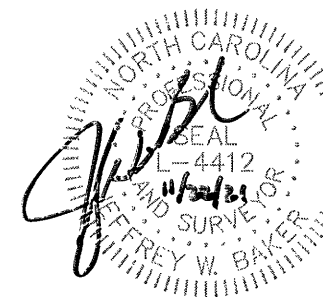
Dillon
 Pin: 1769587864
 Reid: 0225512
 DB 15435, Pg 1349
 BM 1996, Pg 447
 Zoned R40W
 Use: Single Family



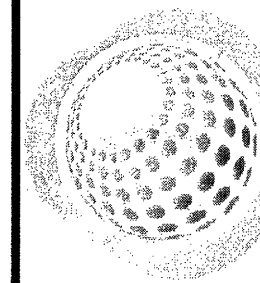
WAKE COUNTY, NC 113
 TAMMY L. BRUNNER
 REGISTER OF DEEDS
 PRESENTED & RECORDED ON
 11/23/2021 16:11:35
 BOOK: BM2021 PAGE: 02076

Wake County Planning and Zoning Jurisdiction

Rolesville Town Limits



Privette
 Pin: 1769568511
 Reid: 0077163
 DB 3443, Pg 973
 Zoned R40W
 Use: Agriculture



Bateman Civil Survey Company
 Engineers • Surveyors • Planners

2524 Reliance Avenue, Apex, NC 27539
 Phone: 919.577.1080 Fax: 919.577.1081
 NCBELS FIRM No. C-2378

D.R. Horton - Terramor, LLC
 7208 Falls of Neuse Road, #201
 Raleigh, NC, 27615

FINAL PLAT
 CHANDLER'S RIDGE SUBDIVISION
 PHASE ONE - LOTS 1-34 & 36-41
 Wake Forest Township, Rolesville
 Wake County, North Carolina

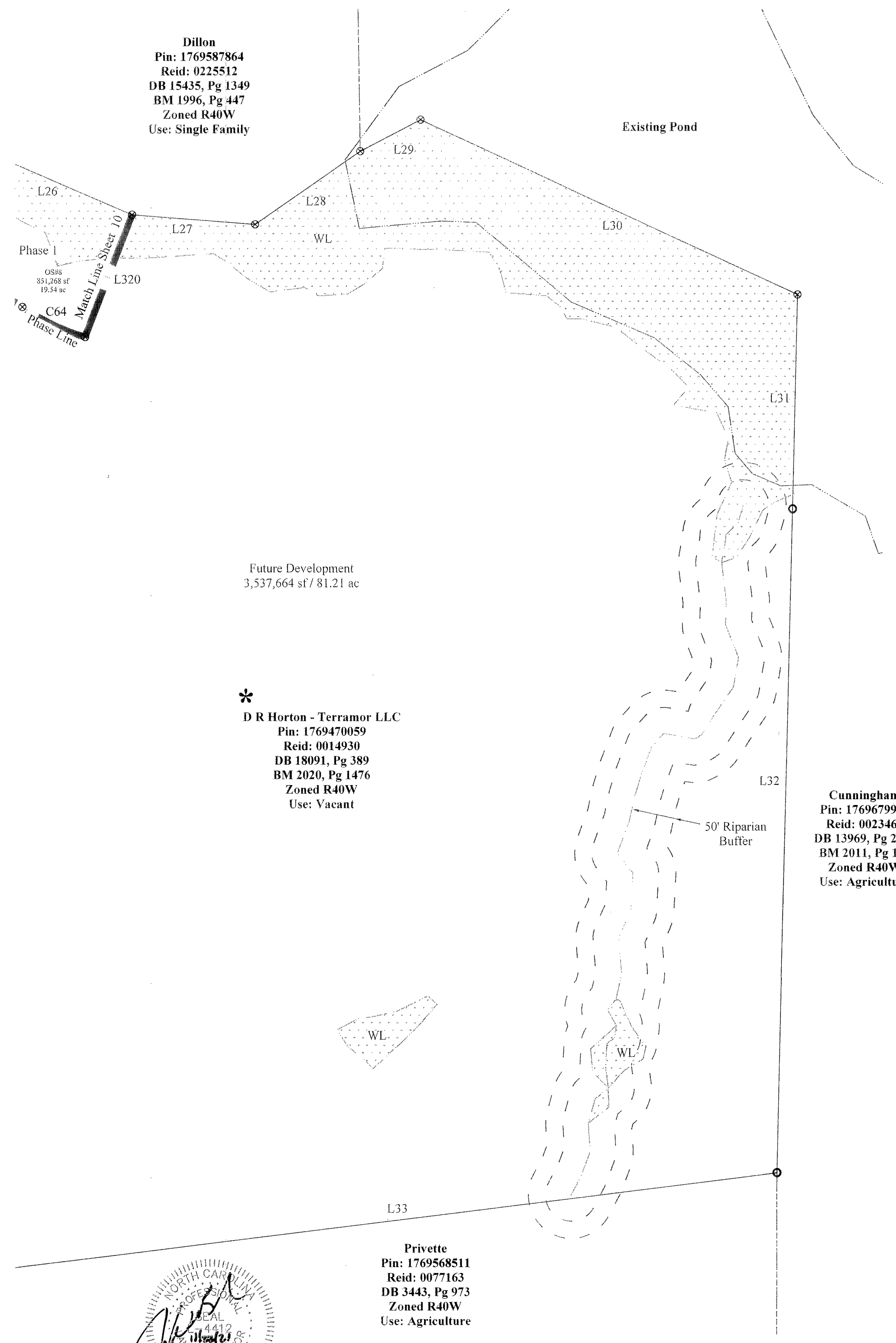
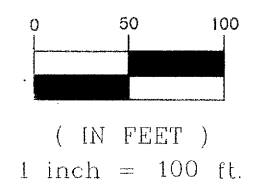
Designed By: N/A
 Drawn By: JCH
 Checked By: JWVB
 Scale: 1"=100'
 Date: 11/02/2021
 Project Number: 200330

SHEET 10 OF 15

LEGEND

- IRON PIPE/REBAR FOUND
 - IRON PIPE/REBAR SET
 - ⊗ COMPUTED POINT
 - ⊗ MONUMENT SET/FOUND
 - OS OPEN SPACE
 - WL WETLANDS
 - SE SIGN EASEMENT
 - SCB STREETScape BUFFER
 - STE 10'x70' SIGHT TRIANGLE EASEMENT
 - PAE PUBLIC ACCESS EASEMENT
 - MAE MAINTENANCE ACCESS EASEMENT
 - PUE PUBLIC UTILITY EASEMENT
 - PDE PUBLIC DRAINAGE EASEMENT
 - PSE PUBLIC SIDEWALK EASEMENT
 - WLE WATER LINE EASEMENT
 - CORUE CITY OF RALEIGH UTILITY EASEMENT
 - CORSSE CITY OF RALEIGH SANITARY SEWER EASEMENT
 - CORFM CITY OF RALEIGH FORCE MAIN EASEMENT
 - TORGE TOWN OF ROLESVILLE GREENWAY EASEMENT
 - DELPE DUKE ENERGY LIGHT POLE EASEMENT
 - PRDE PRIVATE DRAINAGE EASEMENT
 - # STREET ADDRESS
-
- NEW LOT - R/W LINE
 - - - EXISTING LOT - R/W LINE
 - - - EASEMENT LINE
 - - - JURISDICTION LINE
 - - - TOP OF BANK - WETLAND LINE
 - - - BUFFER LINE
 - - - PHASE LINE
 - - - ZONING CHANGE LINE

GRAPHIC SCALE

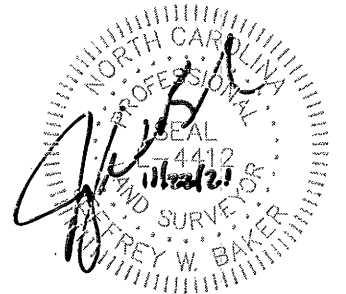


Dillon
 Pin: 1769587864
 Reid: 0225512
 DB 15435, Pg 1349
 BM 1996, Pg 447
 Zoned R40W
 Use: Single Family

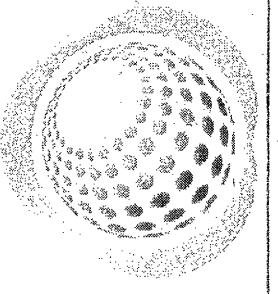
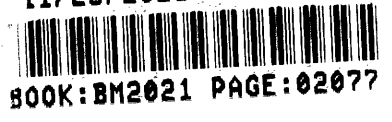
*
D R Horton - Terramor LLC
 Pin: 1769470059
 Reid: 0014930
 DB 18091, Pg 389
 BM 2020, Pg 1476
 Zoned R40W
 Use: Vacant

Cunningham
 Pin: 1769679987
 Reid: 0023469
 DB 13969, Pg 2242
 BM 2011, Pg 136
 Zoned R40W
 Use: Agriculture

Privette
 Pin: 1769568511
 Reid: 0077163
 DB 3443, Pg 973
 Zoned R40W
 Use: Agriculture



WAKE COUNTY, NC 114
 TAMMY L. BRUNNER
 REGISTER OF DEEDS
 PRESENTED & RECORDED ON
 11/23/2021 16:11:35



Bateman Civil Survey Company
 Engineers • Surveyors • Planners
 2524 Reliance Avenue, Apex, NC 27539
 Phone: 919.577.1080 Fax: 919.577.1081
 NCBELS FIRM No. C-2378

D.R. Horton - Terramor, LLC
 7208 Falls of Neuse Road, #201
 Raleigh, NC, 27615

FINAL PLAT
 CHANDLER'S RIDGE SUBDIVISION
 PHASE ONE - LOTS 1-34 & 36-41
 Wake Forest Township, Rolesville
 Wake County, North Carolina

Designed By: N/A
Drawn By: JCH
Checked By: JWB
Scale: 1"=100'
Date: 11/02/2021
Project Number: 200330

Line Table		
Line #	Direction	Length
L1	S81°12'56"E	178.72
L2	S81°12'49"E	210.95
L3	S81°12'49"E	210.51
L4	N05°32'36"E	209.90
L5	S80°12'08"E	924.66
L6	N06°03'21"E	995.48
L7	S57°33'12"E	194.83
L8	N86°48'10"E	1269.97
L9	N23°02'29"E	688.83
L10	S55°27'54"E	399.01
L11	N07°49'06"E	80.26
L12	N44°41'40"E	78.77
L13	N34°07'44"E	223.37
L14	N07°17'09"W	135.94
L15	N43°25'56"E	93.24
L16	N22°09'47"E	65.45
L17	N32°21'39"E	143.40
L18	N56°30'21"E	156.81
L19	N61°58'55"E	77.86
L20	N76°21'53"E	135.03
L21	S29°48'13"E	58.53
L22	S52°51'27"E	178.27
L23	S63°45'31"E	164.54
L24	S72°26'53"E	83.22
L25	N64°46'54"E	97.09
L26	S66°47'32"E	266.88
L27	S85°28'59"E	143.23
L28	N55°32'08"E	148.84
L29	N62°34'27"E	79.00
L30	S65°18'33"E	482.26
L31	S01°18'56"W	247.11
L32	S01°18'56"W	765.21
L33	S82°58'37"W	1881.12
L34	S36°29'19"E	126.12
L35	S35°23'49"E	106.85
L36	S07°59'11"E	18.28
L37	S59°12'50"E	9.62
L38	S21°13'06"E	44.58
L39	S47°34'32"E	13.67
L40	S20°28'22"E	39.79
L41	S24°41'28"E	64.65
L42	S15°44'48"W	20.71
L43	S38°52'21"E	57.30
L44	S11°42'28"E	28.87
L45	S45°40'36"E	35.21
L46	S31°30'25"E	62.67
L47	S05°44'30"E	71.50
L48	S21°01'37"E	52.07
L49	S14°11'37"E	33.36
L50	S16°41'36"W	59.55

Line Table		
Line #	Direction	Length
L51	S49°18'04"W	33.85
L52	S11°19'37"W	32.19
L53	N89°30'20"W	591.45
L54	N89°32'04"W	372.83
L55	N89°46'10"W	553.26
L56	N81°04'56"W	362.24
L57	S13°52'13"W	645.35
L58	S88°35'01"W	683.80
L59	S89°57'24"W	1609.04
L60	N05°38'12"E	844.94
L61	S81°12'56"E	15.02
L62	S05°38'12"W	105.53
L63	S81°35'15"E	25.03
L64	S81°35'15"E	87.35
L66	S81°35'15"E	100.17
L67	S81°35'15"E	100.00
L68	S81°35'15"E	100.00
L69	S81°35'15"E	100.00
L70	S81°35'15"E	100.00
L71	S81°35'15"E	79.31
L72	N89°16'36"E	229.19
L73	N89°16'36"E	152.04
L74	N89°16'36"E	24.98
L75	N00°43'24"W	92.67
L76	N00°43'24"W	131.52
L77	N00°43'24"W	182.74
L78	N00°43'24"W	62.80
L79	N38°45'45"W	20.87
L80	N38°45'45"W	11.88
L81	S38°45'45"E	7.05
L82	S38°45'45"E	66.32
L83	S00°43'24"E	300.14
L84	N88°34'20"E	124.71
L85	N88°34'20"E	175.32
L86	N88°34'20"E	9.69
L87	S81°06'12"E	87.04
L88	S81°06'12"E	124.59
L89	S81°06'12"E	125.68
L90	S81°06'12"E	13.23
L91	S89°33'00"E	60.99
L92	S01°04'12"W	60.00
L93	N89°33'02"W	26.14
L94	N81°06'12"W	49.83
L95	N81°06'12"W	161.12
L96	N81°06'12"W	139.59
L97	S88°34'20"W	80.86
L98	S88°34'20"W	133.56
L99	S88°34'20"W	96.65
L100	S00°43'24"E	59.59
L101	S42°46'22"E	4.82

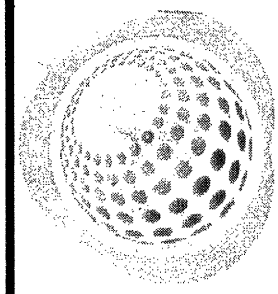
Line Table		
Line #	Direction	Length
L102	N42°46'22"W	3.51
L103	S89°16'36"W	12.45
L104	S89°16'36"W	208.38
L105	S89°16'36"W	154.92
L106	S89°16'36"W	30.46
L107	N81°35'15"W	36.96
L108	S68°27'43"W	58.11
L109	S68°27'43"W	141.88
L110	S68°27'43"W	72.73
L111	N00°25'46"E	5.00
L114	N89°34'14"W	91.62
L115	N89°34'14"W	90.71
L116	N89°34'14"W	33.44
L117	N84°21'44"W	8.94
L118	N84°21'44"W	81.28
L119	N84°21'44"W	25.00
L120	S05°38'12"W	125.82
L121	S89°57'24"W	15.07
L122	N05°38'12"E	844.94
L123	N05°38'13"E	50.00
L124	N05°38'11"E	401.04
L125	S81°35'27"E	23.82
L126	S81°35'15"E	81.30
L127	S05°49'01"W	83.25
L128	S05°49'01"W	109.70
L129	S05°49'01"W	113.20
L130	S05°49'01"W	89.70
L131	N84°21'44"W	78.75
L132	N84°21'44"W	25.00
L133	S79°00'08"E	50.21
L137	N89°34'14"W	90.25
L138	N89°34'14"W	80.51
L139	N05°49'01"E	92.49
L140	N05°49'01"E	105.03
L141	N05°49'01"E	104.73
L142	N05°49'01"E	82.54
L143	S79°00'08"E	50.21
L144	S81°35'15"E	218.42
L145	S81°35'15"E	138.33
L146	S81°35'15"E	152.45
L147	S68°27'43"W	46.61
L148	S68°27'43"W	160.48
L149	S68°27'43"W	65.63
L150	S00°25'46"W	5.00
L151	N89°34'14"W	80.91
L152	N05°49'01"E	124.22
L153	N05°49'01"E	124.87
L154	N05°49'01"E	98.01
L155	S81°12'55"E	50.08
L156	N05°38'12"E	129.24

Line Table		
Line #	Direction	Length
L157	S81°12'56"E	94.33
L158	S08°43'48"W	128.47
L159	S81°12'56"E	19.30
L162	S81°12'49"E	5.90
L163	S09°50'56"W	125.60
L164	N05°32'36"E	209.90
L165	S80°12'08"E	113.46
L166	S08°24'48"W	332.49
L167	S80°12'08"E	100.04
L168	S08°24'52"W	330.08
L169	S80°12'08"E	100.04
L170	S08°24'56"W	327.66
L171	S80°12'08"E	100.04
L172	S08°25'00"W	325.24
L173	S80°12'08"E	100.04
L174	S08°25'04"W	322.82
L175	S80°12'08"E	100.00
L176	S08°24'45"W	320.22
L177	S80°12'08"E	100.03
L178	S08°24'45"W	311.77
L179	S80°12'08"E	211.03
L180	N06°03'21"E	376.12
L181	N05°38'12"E	114.94
L182	S84°10'59"E	104.03
L183	N05°38'12"E	113.20
L184	S84°10'59"E	104.39
L185	N05°38'12"E	109.82
L186	S84°06'57"E	104.74
L187	N05°38'12"E	111.78
L188	S05°49'01"W	103.83
L189	N84°10'59"W	107.50
L190	S05°49'01"W	104.73
L191	N84°10'59"W	107.50
L192	S05°49'01"W	105.03
L193	N84°10'59"W	107.50
L194	S05°49'01"W	109.82
L195	S05°49'01"W	124.16
L196	N81°35'15"W	244.58
L197	S05°49'01"W	124.87
L198	N81°35'15"W	244.58
L199	S05°49'01"W	72.20
L200	S04°47'04"W	185.70
L201	S04°47'04"W	55.57
L202	S73°50'45"W	152.61
L203	S00°56'48"E	30.90
L204	S78°58'29"W	111.60
L205	S00°56'23"W	138.70
L206	N62°13'07"W	235.98
L207	S24°29'21"W	109.28
L208	S50°15'58"W	59.70

Line Table		
Line #	Direction	Length
L209	N44°49'38"W	244.55
L210	S26°16'57"W	51.74
L211	S50°42'09"W	67.31
L212	S61°40'23"W	39.68
L213	N29°08'42"W	264.75
L214	S61°40'23"W	64.05
L215	S89°57'24"W	75.16
L216	N21°32'17"W	239.77
L217	S89°57'24"W	152.49
L218	N21°32'17"W	183.89
L219	S89°57'24"W	239.12
L220	S00°25'58"W	125.34
L221	S89°57'24"W	92.08
L222	S89°57'24"W	92.09
L224	N00°24'08"E	131.86
L225	S89°57'24"W	91.69
L226	N00°25'46"E	132.62
L227	S89°57'24"W	90.71
L228	N00°25'46"E	133.37
L229	S89°57'24"W	90.00
L230	N00°25'46"E	137.09
L231	S89°57'24"W	94.18
L232	N05°38'12"E	145.85
L233	S13°52'13"W	247.19
L234	S88°35'01"W	683.80
L235	S89°57'24"W	526.19
L236	N08°26'16"E	259.63
L237	S80°12'39"E	93.61
L240	N06°03'12"E	55.18
L242	N06°03'12"E	132.76
L244	N06°03'12"E	100.12
L245	N67°59'47"E	224.99
L246	S77°59'19"W	372.64
L247	N06°03'21"E	71.51
L250	N06°03'21"E	200.28
L252	N06°03'21"E	347.58
L255	N86°48'10"E	33.10
L257	N86°48'10"E	285.64
L260	S17°45'12"E	119.34
L262	S24°29'19"E	125.07
L264	S34°13'16"E	103.51
L265	S59°39'53"W	156.41
L266	S71°14'27"W	144.07
L267	N12°00'40"E	143.00
L268	N53°34'17"E	63.79
L269	N49°37'25"E	120.27
L271	N83°20'29"E	123.80
L273	S75°24'26"E	64.89
L274	S63°12'29"E	71.39
L276	S81°59'28"E	124.60

Line Table		
Line #	Direction	Length
L278	S81°59'28"E	125.69
L280	S81°59'28"E	107.39
L281	S00°27'00"W	234.76
L282	S00°14'14"W	172.92
L283	N89°46'10"W	173.60
L284	N81°04'56"W	13.08
L286	N81°04'56"W	165.57
L288	N81°04'56"W	165.96
L290	N81°04'56"W	17.64
L291	S13°52'13"W	57.38
L297	S13°52'13"W	112.53
L299	S13°52'13"W	176.50
L301	S13°52'13"W	51.75
L302	S76°34'19"W	128.13
L305	S76°34'19"W	229.57
L307	S76°34'19"W	87.74
L309	S76°34'19"W	63.64
L310	N40°32'41"W	57.48
L312	N40°32'41"W	198.38
L313	N06°27'53"W	71.32
L314	N49°39'22"W	99.45
L315	N86°48'10"E	478.43
L316	N86°48'10"E	79.81
L317	N86°48'10"E	392.99
L318	S31°54'38"E	752.41
L319	S85°49'48"W	81.23
L320	S20°51'08"W	151.22
L321	S08°37'28"W	20.11
L322	S33°17'22"E	47.36
L323	S25°33'09"E	47.93
L324	S41°40'06"E	30.35
L325	S28°40'48"E	22.48
L326	S15°41'30"E	55.25
L327	S30°12'03"E	42.78
L328	S59°53'24"E	57.40
L329	S46°02'26"W	56.38
L330	S59°25'09"W	17.87
L331	N52°09'25"W	66.11
L332	N72°31'03"W	69.21
L335	N61°43'19"W	17.17
L336	S25°02'54"W	58.02
L337	S20°51'29"W	31.15
L338	S63°04'45"W	44.06
L339	S79°36'19"W	98.12
L340	S57°14'52"W	69.45
L341	S37°10'54"W	169.81
L342	S19°34'07"W	170.44
L343	S09°53'56"E	190.63
L344	S80°06'04"W	130.16
L347	N31°54'38"W	687.06

Line Table		
Line #	Direction	Length
L348	S18°27'21"W	9.71
L349	N41°13'22"W	84.59
L350	S37°17'58"W	28.95
L351	N89°46'10"W	379.65
L688	N89°33'02"W	34.20



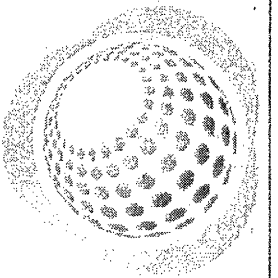
Bateman Civil Survey Company
 Engineers • Surveyors • Planners
 2624 Reliance Avenue, Apex, NC 27539
 Phone: 919.577.1080 Fax: 919.577.1081
 NCBELS FIRM No. C-2378

D.R. Horton - Terramor, LLC
 7208 Falls of Neuse Road, #201
 Raleigh, NC, 27615

FINAL PLAT

Curve Table						
Curve #	Radius	Length	Delta	Direction	Chord	Tangent
C1	25.00	39.51	090°33'24"	S39°05'16"E	35.53	25.24
C3	1175.00	20.69	001°00'32"	S82°05'31"E	20.69	10.35
C4	1175.00	100.21	004°53'12"	S85°02'23"E	100.18	50.14
C5	1175.00	66.46	003°14'26"	S89°06'12"E	66.45	33.24
C6	200.00	213.86	061°15'55"	N58°38'38"E	203.81	118.43
C7	200.00	100.30	028°44'05"	N13°38'38"E	99.25	51.23
C8	200.00	48.32	013°50'35"	N07°38'42"W	48.20	24.28
C9	200.00	84.46	024°11'45"	N26°39'52"W	83.83	42.87
C10	25.00	31.06	071°11'09"	N74°21'19"W	29.10	17.89
C11	68.00	128.85	108°33'49"	N55°39'59"W	110.42	94.57
C12	68.00	62.72	052°50'50"	N25°02'20"E	60.52	33.79
C13	68.00	50.37	042°26'32"	N72°41'01"E	49.23	26.40
C14	68.00	42.47	035°47'16"	S68°12'04"E	41.79	21.96
C15	68.00	50.08	042°11'42"	S29°12'35"E	48.95	26.24
C16	25.00	13.37	030°39'00"	S23°26'14"E	13.21	6.85
C17	260.00	20.39	004°29'36"	S36°30'57"E	20.38	10.20
C18	260.00	91.34	020°07'42"	S24°12'18"E	90.87	46.15
C19	260.00	60.89	013°25'03"	S07°25'56"E	60.75	30.58
C20	25.00	39.58	090°42'15"	S46°04'32"E	35.57	25.31
C21	635.00	99.27	008°57'25"	S86°56'58"E	99.17	49.73
C22	635.00	15.16	001°22'03"	S81°47'14"E	15.16	7.58
C23	465.00	68.55	008°26'48"	S85°19'36"E	68.49	34.34
C24	524.94	77.40	008°26'51"	N85°19'36"W	77.33	38.77
C25	575.00	24.10	002°24'06"	N82°18'15"W	24.10	12.05
C26	575.00	79.51	007°55'22"	N87°27'59"W	79.45	39.82
C27	25.00	38.96	089°17'45"	S43°55'28"W	35.14	24.69
C28	260.00	158.90	035°00'58"	S16°47'04"W	156.44	82.02
C29	260.00	5.09	001°07'15"	S34°51'11"W	5.09	2.54
C30	25.00	34.12	078°11'10"	S03°40'47"E	31.53	20.31
C31	20.00	16.82	048°11'23"	S66°52'03"E	16.33	8.94
C32	55.00	71.23	074°12'23"	S53°51'33"E	66.36	41.60
C33	55.00	44.83	046°42'12"	S06°35'44"W	43.60	23.75
C34	55.00	41.12	042°50'23"	S51°22'02"W	40.17	21.58
C35	55.00	50.71	052°49'23"	N80°48'05"W	48.93	27.32
C36	55.00	57.41	059°48'25"	N24°29'11"W	54.84	31.63
C37	20.00	16.82	048°11'23"	N18°40'40"W	16.33	8.94
C38	25.00	34.71	079°33'30"	N82°33'07"W	31.99	20.81
C39	260.00	54.11	011°55'24"	S63°37'50"W	54.01	27.15
C40	260.00	89.32	019°41'04"	S79°26'04"W	88.89	45.11
C41	1235.00	196.93	009°08'10"	N86°09'20"W	196.72	98.67
C42	25.00	37.77	086°33'58"	S55°07'47"W	34.28	23.54

Curve Table						
Curve #	Radius	Length	Delta	Direction	Chord	Tangent
C43	305.00	84.83	015°56'06"	S19°48'51"W	84.55	42.69
C44	305.00	92.58	017°23'29"	S36°28'38"W	92.22	46.65
C45	305.00	83.48	015°40'56"	S53°00'50"W	83.22	42.00
C46	305.00	40.49	007°36'25"	S64°39'31"W	40.46	20.28
C47	275.00	105.44	021°58'03"	S79°26'45"W	104.79	53.37
C48	525.00	47.72	005°12'29"	N86°57'59"W	47.71	23.88
C49	25.00	39.27	090°00'03"	S50°38'14"W	35.35	25.00
C50	25.00	39.15	089°44'03"	N39°29'43"W	35.27	24.88
C51	25.00	40.48	092°46'21"	N52°01'22"E	36.20	26.24
C52	25.00	38.14	087°24'16"	S37°53'07"E	34.55	23.89
C53	25.00	39.19	089°49'15"	S50°43'38"W	35.30	24.92
C54	25.00	40.40	092°35'44"	N52°06'53"E	36.15	26.16
C55	25.00	38.14	087°24'16"	S37°53'07"E	34.55	23.89
C56	25.00	36.92	084°36'45"	S48°07'24"W	33.65	22.75
C57	25.00	41.62	095°23'15"	N41°52'36"W	36.98	27.47
C58	25.00	40.40	092°35'14"	N52°06'53"E	36.15	26.16
C59	25.00	41.52	095°09'18"	S34°00'36"E	36.91	27.36
C60	245.00	234.73	054°53'40"	S41°00'53"W	225.86	127.25
C61	215.00	82.43	021°58'03"	S79°26'45"W	81.93	41.73
C62	25.00	41.62	095°23'15"	N41°52'36"W	36.98	27.47
C63	2446.76	36.12	000°50'45"	S31°41'58"E	36.12	18.06
C64	245.84	81.09	018°53'53"	N64°32'47"W	80.72	40.91
C65	308.55	176.18	032°42'55"	N71°27'18"W	173.80	90.56
C66	454.47	190.70	024°02'32"	S80°10'33"W	189.31	96.78
C67	197.07	135.07	039°16'09"	S87°47'55"W	132.44	70.31
C68	645.05	138.09	012°15'56"	N66°26'00"W	137.82	69.31
C69	1594.77	111.80	004°01'00"	N62°18'27"W	111.78	55.92
C70	265.44	232.77	050°14'42"	N89°26'15"W	225.38	124.47
C71	149.88	206.74	079°01'53"	S25°55'27"W	190.74	123.62
C72	109.19	104.58	054°52'32"	S13°50'38"W	100.63	56.69
C73	878.27	42.11	002°44'49"	S39°54'42"W	42.10	21.06
C74	880.85	70.07	004°33'27"	S36°15'48"W	70.05	35.05
C75	880.12	83.41	005°25'49"	S31°16'18"W	83.38	41.74
C76	178.82	179.74	057°35'28"	S00°14'13"E	172.27	98.29
C77	50.00	27.82	031°53'10"	S88°27'35"E	27.47	14.28
C78	50.00	17.77	020°21'38"	N62°20'14"W	17.67	8.98
C79	50.20	86.21	098°24'30"	S06°06'32"E	76.00	58.16
C83	52.37	40.68	044°30'11"	S43°38'40"W	39.67	21.43
C84	50.00	9.54	010°56'03"	N46°41'24"W	9.53	4.79
C85	260.00	62.16	013°41'57"	S73°15'05"W	62.02	31.23
C86	25.00	35.64	081°41'16"	N72°45'15"W	32.70	21.61



Bateman Civil Survey Company
 Engineers • Surveyors • Planners
 2624 Reliance Avenue, Apex, NC 27539
 Phone: 919.577.1080 Fax: 919.577.1081
 NCBELS FIRM No. C-2378

D.R. Horton - Terramor, LLC
 7208 Falls of Neuse Road, #201
 Raleigh, NC, 27615

FINAL PLAT
 CHANDLER'S RIDGE SUBDIVISION
 PHASE ONE - LOTS 1-34 & 36-41
 Wake Forest Township, Rolesville
 Wake County, North Carolina

Designed By: N/A
 Drawn By: JCH
 Checked By: JWB
 Scale:
 Date: 11/02/2021
 Project Number: 200330

SHEET
13 OF 15

WAKE COUNTY, NC 116
 TAMMY L. BRUNNER
 REGISTER OF DEEDS
 PRESENTED & RECORDED ON
 11/23/2021 16:11:35

 BOOK: BM2021 PAGE: 02079



Easement Line Table with columns: Line #, Direction, Length. Rows E352 to E402.

Easement Line Table with columns: Line #, Direction, Length. Rows E403 to E452.

Easement Line Table with columns: Line #, Direction, Length. Rows E453 to E502.

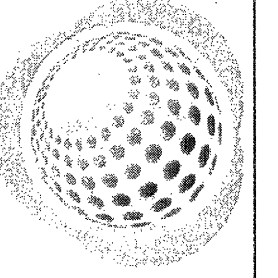
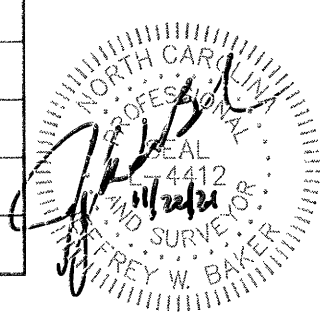
Easement Line Table with columns: Line #, Direction, Length. Rows E503 to E552.

Easement Line Table with columns: Line #, Direction, Length. Rows E553 to E602.

Easement Line Table with columns: Line #, Direction, Length. Rows E603 to E652.

Easement Line Table with columns: Line #, Direction, Length. Rows E653 to E703.

WAKE COUNTY, NC 117 TAMMY L. BRUNNER REGISTERED PROFESSIONAL SURVEYOR PRESENTED & RECORDED ON 11/23/2021 16:11:35 BOOK: 182021 PAGE: 02080



Bateman Civil Survey Company Engineers • Surveyors • Planners 2524 Reliance Avenue, Apex, NC 27539 Phone: 919.577.1080 Fax: 919.577.1081 NCBELS FIRM No. C-2378

D.R. Horton - Terramor, LLC 7208 Falls of Neuse Road, #201 Raleigh, NC, 27615

FINAL PLAT CHANDLER'S RIDGE SUBDIVISION PHASE ONE - LOTS 1-34 & 36-41 Wake Forest Township, Rolesville Wake County, North Carolina


Designed By: N/A Drawn By: JCH Checked By: JWB Scale: Date: 11/02/2021 Project Number: 200330

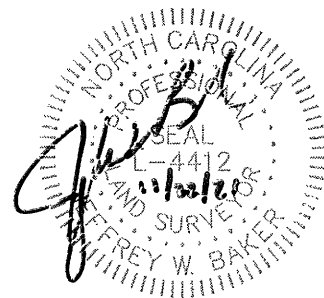
Easement Curve Table						
Curve #	Radius	Length	Delta	Direction	Chord	Tangent
EC87	275.00	10.00	002°05'02"	N89°23'15"E	10.00	5.00
EC88	305.00	10.00	001°52'44"	N61°47'40"E	10.00	5.00
EC89	305.00	10.00	001°52'44"	N59°54'56"E	10.00	5.00
EC90	25.00	5.92	013°34'21"	N77°34'48"W	5.91	2.97
EC91	25.00	10.91	024°59'44"	N58°17'45"W	10.82	5.54
EC92	25.00	3.40	007°47'14"	N41°54'17"W	3.40	1.70
EC93	25.00	7.51	017°12'28"	N29°24'26"W	7.48	3.78
EC94	25.00	11.78	026°59'39"	N07°18'23"W	11.67	6.00
EC95	25.00	2.56	005°51'30"	N08°33'56"E	2.56	1.28
EC96	25.00	19.61	044°56'44"	N33°58'03"E	19.11	10.34
EC97	25.00	13.47	030°52'21"	N71°52'36"E	13.31	6.90
EC98	25.00	4.84	011°05'45"	S87°08'21"E	4.83	2.43
EC99	25.00	3.70	008°28'56"	N80°07'17"W	3.70	1.85
EC100	25.00	0.59	001°21'28"	N75°12'04"W	0.59	0.30
EC101	25.00	12.81	029°22'06"	N59°50'18"W	12.67	6.55
EC102	25.00	1.71	003°55'35"	N43°11'27"W	1.71	0.86
EC103	25.00	14.72	033°43'42"	N24°21'48"W	14.51	7.58
EC104	25.00	5.62	012°52'15"	N01°03'50"W	5.60	2.82
EC105	25.00	40.14	091°59'51"	N43°34'18"W	35.97	25.89
EC106	25.00	23.22	053°13'08"	N32°14'50"E	22.40	12.52
EC107	25.00	16.05	036°46'48"	N77°14'52"E	15.77	8.31
EC108	25.00	13.32	030°31'15"	S21°04'38"W	13.16	6.82
EC109	25.00	3.50	008°01'32"	S40°21'02"W	3.50	1.75
EC110	25.00	12.57	028°48'26"	S58°46'01"W	12.44	6.42
EC111	25.00	5.05	011°34'31"	S78°57'30"W	5.04	2.53
EC112	25.00	4.75	010°53'30"	N89°48'29"W	4.75	2.38
EC113	25.00	36.92	084°36'45"	S48°07'24"W	33.65	22.75
EC114	25.00	18.56	042°32'33"	N15°27'15"W	18.14	9.73
EC115	25.00	17.00	038°57'05"	N56°12'04"W	16.67	8.84
EC116	26.00	19.89	043°49'59"	N62°01'10"E	19.41	10.46
EC117	207.00	55.91	015°28'27"	N76°11'57"E	55.74	28.12
EC118	215.00	76.09	020°16'42"	S78°36'04"W	75.70	38.45
EC119	25.00	9.93	022°45'30"	N17°11'46"E	9.87	5.03
EC120	25.00	15.14	034°41'55"	N45°55'28"E	14.91	7.81
EC121	25.00	6.88	015°46'33"	N89°28'31"W	6.86	3.46
EC122	25.00	5.31	012°10'29"	N76°32'58"E	5.30	2.67
EC123	25.00	2.60	005°57'04"	S78°36'43"E	2.60	1.30
EC124	25.00	5.21	011°56'57"	S69°39'42"E	5.20	2.62
EC125	25.00	10.88	024°56'36"	N06°39'17"W	10.80	5.53
EC126	25.00	16.63	038°06'12"	S38°10'41"E	16.32	8.63
EC127	25.00	38.64	088°33'20"	N54°07'50"E	34.91	24.38
EC128	237.00	243.64	058°54'00"	N39°00'43"E	233.05	133.81
EC129	26.00	20.42	045°00'00"	N59°05'15"W	19.90	10.77
EC130	1175.00	10.00	000°29'16"	N82°50'25"W	10.00	5.00
EC131	1175.00	10.00	000°29'16"	N82°21'09"W	10.00	5.00
EC132	305.00	10.00	001°52'44"	N28°43'15"E	10.00	5.00
EC133	305.00	10.00	001°52'44"	N26°50'31"E	10.00	5.00
EC134	26.00	20.42	045°00'00"	S66°46'36"W	19.90	10.77
EC135	1245.00	198.52	009°08'10"	N86°09'20"W	198.31	99.47
EC136	25.00	23.18	053°07'48"	N71°50'51"E	22.36	12.50

Easement Curve Table						
Curve #	Radius	Length	Delta	Direction	Chord	Tangent
EC137	25.00	22.29	051°05'32"	N83°12'54"E	21.56	11.95
EC138	270.00	168.42	035°44'22"	S71°24'24"W	165.70	87.05
EC139	26.00	20.42	045°00'00"	N68°13'24"W	19.90	10.77
EC140	535.00	78.87	008°26'48"	N85°19'36"W	78.80	39.51
EC141	565.00	101.81	010°19'27"	N86°15'56"W	101.67	51.04
EC142	270.00	189.76	040°16'08"	S19°24'39"W	185.88	98.99
EC143	25.00	15.63	035°49'54"	N02°14'14"E	15.38	8.08
EC144	260.00	21.26	004°41'04"	N69°34'30"E	21.25	10.63
EC145	55.00	20.16	021°00'18"	S43°53'14"E	20.05	10.20
EC146	55.00	16.31	016°59'36"	S62°53'12"E	16.25	8.22
EC147	55.00	15.44	016°04'47"	N08°42'58"W	15.38	7.77
EC148	55.00	17.38	018°06'25"	N25°48'34"W	17.31	8.76
EC149	25.00	6.66	015°15'37"	N27°47'00"E	6.64	3.35
EC150	260.00	5.09	001°07'15"	N34°51'11"E	5.09	2.54
EC151	260.00	11.98	002°38'26"	N32°58'20"E	11.98	5.99
EC152	200.00	10.03	002°52'25"	S26°34'28"W	10.03	5.02
EC153	200.00	10.00	002°51'58"	S29°26'39"W	10.00	5.00
EC154	26.00	20.96	046°11'13"	N23°49'01"W	20.40	11.09
EC155	26.00	20.42	045°00'00"	N21°46'36"E	19.90	10.77
EC156	30.72	20.12	037°31'44"	N45°43'54"W	19.77	10.44
EC157	192.00	47.70	014°14'09"	N31°38'40"W	47.58	23.98
EC158	25.00	15.08	034°33'58"	S68°38'09"E	14.85	7.78
EC159	25.00	5.49	012°35'25"	S45°03'27"E	5.48	2.76
EC160	68.00	10.05	008°28'02"	S02°50'56"W	10.04	5.03
EC161	68.00	10.30	008°40'48"	S05°43'29"E	10.29	5.16
EC162	68.00	10.09	008°30'07"	N81°50'39"W	10.08	5.05
EC163	68.00	10.01	008°26'07"	S89°41'14"W	10.00	5.01
EC164	25.00	2.97	006°48'28"	N35°21'31"W	2.97	1.49
EC165	635.00	10.05	000°54'23"	N82°01'04"W	10.05	5.02
EC166	635.00	10.03	000°54'19"	N82°55'25"W	10.03	5.02
EC167	28.00	45.50	093°06'40"	N35°38'08"E	40.66	29.56
EC168	28.20	42.99	087°20'27"	S89°05'18"E	38.95	26.92
EC169	28.20	20.46	041°33'25"	S24°38'22"E	20.01	10.70
EC170	28.20	24.41	049°35'06"	S20°55'54"W	23.65	13.03
EC171	28.00	12.13	024°49'18"	S13°38'06"W	12.04	6.16
EC172	29.97	19.35	036°59'28"	S46°52'18"W	19.01	10.02
EC173	29.97	20.45	039°06'16"	S84°55'10"W	20.06	10.64
EC174	29.97	37.78	072°14'00"	N39°24'42"W	35.33	21.86
EC175	18.00	29.25	093°06'40"	N35°38'08"E	26.14	19.00
EC176	18.20	56.70	178°28'58"	S43°31'02"E	36.40	1374.65
EC177	18.00	7.80	024°49'18"	S13°38'06"W	7.74	3.96
EC178	19.97	51.69	148°19'44"	N77°27'34"W	38.42	70.39
EC179	25.00	2.19	005°00'46"	N88°55'17"W	2.19	1.09
EC180	37.00	85.24	131°59'52"	S31°57'26"W	67.60	83.10
EC181	27.50	86.39	180°00'00"	N07°57'22"E	55.00	INFINITY
EC182	37.00	47.48	073°31'43"	S70°48'21"E	44.29	27.64
EC183	27.00	62.20	131°59'52"	S31°57'26"W	49.33	60.64
EC184	17.50	54.98	180°00'00"	N07°57'22"E	35.00	INFINITY
EC185	27.00	34.65	073°31'43"	S70°48'21"E	32.32	20.17
EC186	466.00	259.53	031°54'38"	N15°57'19"W	256.19	133.23

Easement Curve Table						
Curve #	Radius	Length	Delta	Direction	Chord	Tangent
EC187	260.00	35.06	007°43'35"	S70°15'54"W	35.03	17.56
EC188	496.00	276.24	031°54'38"	S15°57'19"E	272.69	141.81
EC189	25.00	9.40	021°33'09"	S70°48'40"E	9.35	4.76
EC190	25.00	22.60	051°47'05"	S34°08'33"E	21.83	12.14
EC191	25.00	3.98	009°07'11"	S03°41'24"E	3.98	1.99
EC192	25.00	5.20	011°54'27"	S06°49'25"W	5.19	2.61
EC193	25.00	0.34	000°47'24"	S13°10'21"W	0.34	0.17
EC194	25.00	19.02	043°36'05"	N79°28'10"E	18.57	10.00
EC195	25.00	5.34	012°14'40"	S72°36'27"E	5.33	2.68
EC196	25.00	9.97	022°50'24"	S08°43'59"W	9.90	5.05
EC197	25.00	17.01	038°58'39"	N22°10'32"W	16.68	8.85
EC198	25.00	32.29	074°00'07"	N36°16'39"E	30.09	18.84
EC199	25.00	7.74	017°44'38"	S09°35'44"E	7.71	3.90
EC200	25.00	9.22	021°08'21"	N29°02'13"W	9.17	4.66
EC201	575.00	42.37	004°13'18"	S89°19'01"E	42.36	21.19
EC202	575.00	29.75	002°57'51"	S85°43'27"E	29.74	14.88
EC203	55.00	4.97	005°10'57"	N70°11'45"E	4.97	2.49
EC204	55.00	5.07	005°16'36"	N75°25'31"E	5.06	2.53
EC205	25.00	4.95	011°21'18"	N75°43'45"E	4.95	2.49
EC206	25.00	5.11	011°42'41"	N87°15'45"E	5.10	2.56
EC207	68.00	7.25	006°06'29"	N01°40'10"E	7.25	3.63
EC208	68.00	18.69	015°44'56"	S12°35'53"W	18.63	9.40

Easement Line Table		
Line #	Direction	Length
E754	N35°38'50"W	12.41
E755	N54°21'10"E	13.90
E756	S81°12'49"E	10.00

WAKE COUNTY, NC 118
 TAMMY L. BRUNNER
 REGISTER OF DEEDS
 PRESENTED & RECORDED ON
 11/23/2021 16:11:35

 BOOK:BM2021 PAGE:02081



Easement Line Table		
Line #	Direction	Length
E704	N68°09'02"W	57.34
E705	N89°16'36"E	18.08
E706	N89°16'36"E	65.50
E707	N89°16'36"E	5.00
E708	S00°43'24"E	14.94
E709	S89°16'36"W	5.00
E710	N00°43'24"W	14.94
E711	S00°44'03"W	6.86
E712	N89°15'57"W	5.00
E713	N00°00'30"W	8.38
E714	S51°14'43"E	14.58
E715	S38°45'17"W	8.10
E716	S00°43'24"E	2.36
E717	S89°16'36"W	12.86
E718	N00°43'24"W	5.00
E719	N89°16'36"E	12.86
E720	S00°43'24"E	2.64
E721	S24°38'18"W	42.28
E722	N00°43'24"W	14.17
E723	N88°59'09"E	4.31
E724	S01°00'51"E	8.10
E725	N88°34'20"E	2.50
E726	S00°25'20"E	15.97
E727	S89°34'40"W	5.00
E728	N00°25'20"W	15.88
E729	N88°34'20"E	2.50
E730	S03°29'38"W	23.04
E731	N87°19'05"W	29.67
E732	N03°19'13"E	23.87
E733	N81°06'12"W	4.77
E734	N09°08'50"E	9.36
E735	S80°51'10"E	10.00
E736	S09°08'50"W	9.31
E737	N81°06'12"W	5.23
E738	S21°19'08"E	6.21
E739	S68°40'52"W	10.00
E740	N21°19'08"W	6.93
E741	S81°06'12"E	10.00
E742	S81°06'12"E	5.00
E743	S08°14'55"W	6.00
E744	N81°45'05"W	5.00