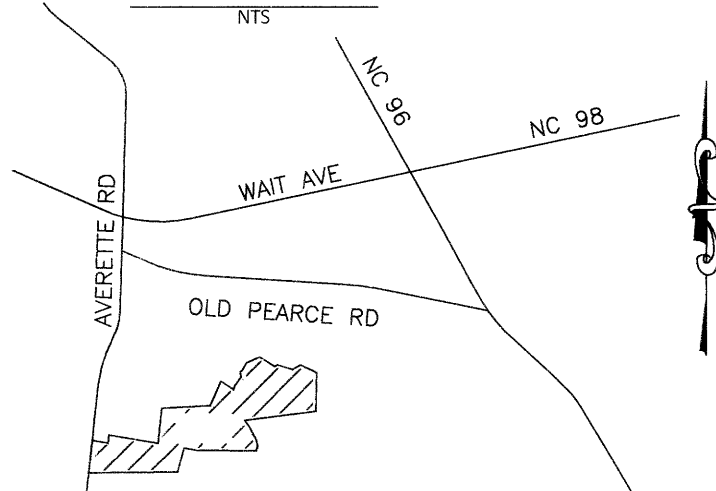


**VICINITY MAP**



**Owner Information:**  
 Owner: D.R. Horton - Terramor, LLC  
 7208 Falls of Neuse Road, #201  
 Raleigh, NC, 27615  
 Zoning District - R40W & R2 (Conservation Subdivision)  
 Existing Use - Vacant  
 Watershed - Little River  
 Pin - 1769470059 Reid - 0014930  
 DB 18091, Pg 389  
 BM 2020, Pg 1476-1478

**REFERENCES**  
 -DEED BOOK 18091, PAGE 389  
 -BOOK OF MAPS 2020, PAGE 1476  
 -BOOK OF MAPS 2021, PAGE 2067

**Site Data:**

Overall Area:	7,584,090 sf / 174.1067 ac
Phase 1 Area:	4,046,426 sf / 92.8931 ac
Residual Area:	3,537,664 sf / 81.2136 ac
Phase 1 Number of Lots:	40
Phase 1 Smallest Lot Area:	11,258 sf / 0.26 ac
Phase 1 Linear Street Length:	6,278 lf
Pump Station Lot:	9,622 sf / 0.2209 ac
Phase 1 Lot Area:	225,823 sf / 5.1842 ac
Phase 1 Future Lot Area:	1,609,683 sf / 36.9532 ac
Phase 1 R/W Dedication:	363,226 sf / 8.3385 ac
Phase 1 Open Space:	1,838,072 sf / 42.1963 ac

**GENERAL NOTES**

- This survey was prepared by Bateman Civil Survey Company, under the supervision of Jeffrey W. Baker, pls.
- Field equipment used: Trimble r8 gps and Trimble s8 robotic total station.
- All distances are horizontal ground distances unless otherwise noted.
- The property lies in Zone "X" per National Flood Insurance Program Flood Insurance Rate Map #37201769001, dated May 02, 2006.
- No grid monuments found within 2000'
- No evidence of cemeteries were observed at the time of survey.
- This survey was prepared without the benefit of a title report and is subjected to any matters that a full title search would disclose.
- Areas by coordinate method.

I hereby certify that I am the owner of the property shown and described hereon, which is located in the subdivision jurisdiction of the Town of Rolesville and that I hereby adopt this plan of subdivision with my free consent, establish minimum building setback lines, and dedicate all streets, alleys, walks, parks, and other sites and easements to public or private use as noted. Furthermore, I hereby dedicate all sanitary sewer, storm sewer and water lines to the Town of Rolesville.

Owner: Ben C. Lunn  
 DR Horton - Terramor, LLC Ben C. Lunn / Division President  
 12-14-21

Date

"North Carolina, Wake County.

I, Michael L. Jones, a Notary Public of the County and State aforesaid, certify that Ben C. Lunn, personally appeared before me this day and acknowledged the execution of the foregoing instrument. Witness my hand and official stamp or seal, this 16<sup>th</sup> day of December, 2021.

Notary Public Michael L. Jones  
 My commission expires 7-20-24 "

MICHAEL L. JONES  
 Notary Public  
 Wake County  
 North Carolina

"Certificate of Approval for Recording"

I hereby certify that the subdivision plat shown hereon has been found to comply with the Subdivision Regulations of the Town of Rolesville, North Carolina and that this plat has been approved by the Subdivision Administrator of the Town of Rolesville for recording in the Office of the Register of Deeds of Wake County.

Meredith Gruber  
 Subdivision Administrator, Town of Rolesville

Date 12/17/2021  
 Rolesville, North Carolina

"I Meredith Gruber hereby certify that all streets, utilities and other required improvements have been installed in a acceptable manner and according to Town specifications and standards in the Subdivision or that guarantees of the installation of the required improvements in an amount and manner satisfactory to the Town of Rolesville has been received and that the filing fees for this plat, in the amount of \$ 625.00 has been paid.

12/17/2021 Meredith Gruber  
 Date Subdivision Administrator"

Rolesville, North Carolina

I Meredith Gruber Review Officer of the Town of Rolesville, Certify that the Map or Plat to which this Certification is affixed meets all statutory requirements for recording.

12/17/2021 Meredith Gruber  
 Date Review Officer

"I, Jeffrey W. Baker, certify that this plat was drawn under my supervision from an actual survey made under my supervision (deed description recorded in Book 18091, page 389); that the boundaries not surveyed are clearly indicated as drawn from information found in Book 2021, page 2067-2081; that the ratio of precision or positional accuracy as calculated is 1:10000+; that this plat was prepared in accordance with G.S. 47-30 as amended. witness my original signature, license number and seal this 14th day of December, A.D. 2021."

Jeffrey W. Baker  
 Professional Land Surveyor  
 License Number-4412

I, Jeffrey W. Baker, Professional Land Surveyor No. L-4412 certify that this survey creates a subdivision of land within the area of a county or municipality that has an ordinance that regulates parcels of land.

Jeffrey W. Baker 12/14/21  
 Jeffrey W. Baker, PLS L-4412 date

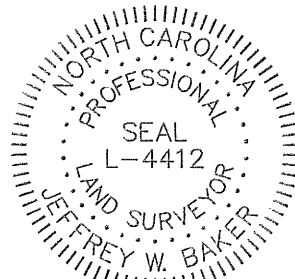
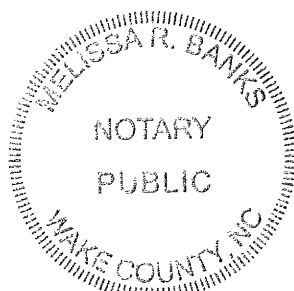
WAKE COUNTY, NC 88  
 TAMMY L. BRUNNER  
 REGISTER OF DEEDS  
 PRESENTED & RECORDED ON  
 12/21/2021 10:27:07  
  
 BOOK:BM2021 PAGE:02282

"North Carolina, Wake County.

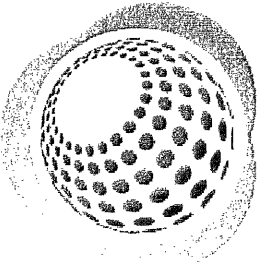
I, Melissa R. Banks, a Notary Public of the County and State aforesaid, certify that Jeffrey W. Baker, a registered land surveyor, personally appeared before me this day and acknowledged the execution of the foregoing instrument. Witness my hand and official stamp or seal, this 14 day of December, 2021.

Melissa R. Banks  
 Notary Public

My commission expires March 17, 2023



The Sole Purpose of this Plat is to Include Line and Curve Data that was inadvertently left of the Previous Plat Recorded in Book of Maps 2021, Pages 2067-2081.



**Bateman Civil Survey Company**  
 Engineers • Surveyors • Planners  
 2524 Reliance Avenue, Apex, NC 27539  
 Phone: 919.577.1080 Fax: 919.577.1081  
 NCBELS FIRM No. C-2378

D.R. Horton - Terramor, LLC  
 7208 Falls of Neuse Road, #201  
 Raleigh, NC, 27615

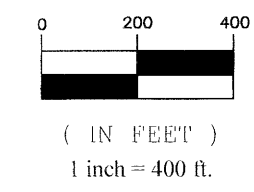
PLAT OF CORRECTION  
 CHANDLER'S RIDGE SUBDIVISION  
 PHASE ONE - LOTS 1-34 & 36-41  
 Wake Forest Township, Rolesville  
 Wake County, North Carolina

Designed By: N/A  
 Drawn By: JCH  
 Checked By: JWB  
 Scale: N/A  
 Date: 12/14/2021  
 Project Number: 200330

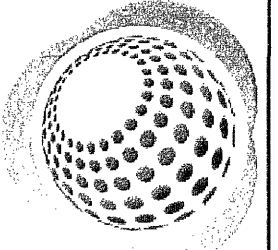
**SHEET**  
**1 OF 15**

- A) Hunt, Pin: 1769058681, Reid: 0169078, DB 17026, Pg 1287, Zoned R1, Use: Single Family
- B) Logan, Pin: 1769150681, Reid: 0169079, DB 18192, Pg 1163, Zoned R1, Use: Single Family
- C) Blackwood, Pin: 1769152651, Reid: 0169080, DB 15721, Pg 644, Zoned R1, Use: Single Family
- D) Strickland, Pin: 1769154631, Reid: 0169081, DB 8134, Pg 460, Zoned R40W, Use: Single Family
- E) Belcher, Pin: 1769156610, Reid: 0169082, DB 14781, Pg 1506, Zoned R40W, Use: Single Family
- F) Onderdonk, Pin: 1769157692, Reid: 0169083, DB 16886, Pg 1732, Zoned R40W, Use: Single Family
- G) W&W Rental Properties Inc, Pin: 1769159670, Reid: 0169084, DB 13269, Pg 1954, Zoned R40W, Use: Vacant
- H) Brown, Pin: 1769251650, Reid: 0169085, DB 10162, Pg 1198, Zoned R40W, Use: Single Family
- I) Burgie, Pin: 1769253630, Reid: 0169086, DB 11316, Pg 2235, Zoned R40W, Use: Single Family
- J) McNamara, Pin: 1769350556, Reid: 00235231, DB 17083, Pg 583, Zoned R2, Use: Single Family
- K) Vierno, Pin: 1769351555, Reid: 0235232, DB 9062, Pg 1929, Zoned R2, Use: Single Family
- L) Doren, Pin: 1769352642, Reid: 0298557, DB 9813, Pg 1166, Zoned SIA, Use: Single Family
- M) Wiggins, Pin: 1769353820, Reid: 0298552, DB 11010, Pg 1756, Zoned SIA, Use: Single Family
- N) Armant, Pin: 1769353910, Reid: 0298551, DB 10584, Pg 1380, Zoned SIA, Use: Single Family
- O) Little, Pin: 1769363022, Reid: 0298550, DB 18375, Pg 392, Zoned SIA, Use: Single Family
- P) Purser, Pin: 1769362171, Reid: 0298549, DB 9784, Pg 2116, Zoned SIA, Use: Single Family
- Q) Dodson, Pin: 1769362294, Reid: 0298548, DB 17086, Pg 1008, Zoned SIA, Use: Single Family
- R) Tucker, Pin: 1769363370, Reid: 0298547, DB 10599, Pg 913, Zoned SIA, Use: Single Family
- S) Harris, Pin: 1769365207, Reid: 0298546, DB 14433, Pg 2044, Zoned SIA, Use: Single Family
- T) Foster, Pin: 1769365260, Reid: 0298545, DB 9987, Pg 1, Zoned SIA, Use: Single Family

GRAPHIC SCALE



BM 2020, Pg 1476



**Bateman Civil Survey Company**  
 Engineers • Surveyors • Planners  
 2824 Reliance Avenue, Apex, NC 27539  
 Phone: 919.577.1080 Fax: 919.577.1081  
 NCBELS FIRM No. C-2378

**D.R. Horton - Terramor, LLC**  
 7208 Falls of Neuse Road, #201  
 Raleigh, NC, 27615

**PLAT OF CORRECTION**  
**CHANDLER'S RIDGE SUBDIVISION**  
**PHASE ONE - LOTS 1-34 & 36-41**  
 Wake Forest Township, Rolesville  
 Wake County, North Carolina

Designed By: N/A  
 Drawn By: JCH  
 Checked By: JWB  
 Scale: N/A  
 Date: 12/14/2021  
 Project Number: 200330

**SHEET**  
**2 OF 15**

**Averette Road - SR 1945**  
 60' Public R/W  
 BM 2015, Pg 1905

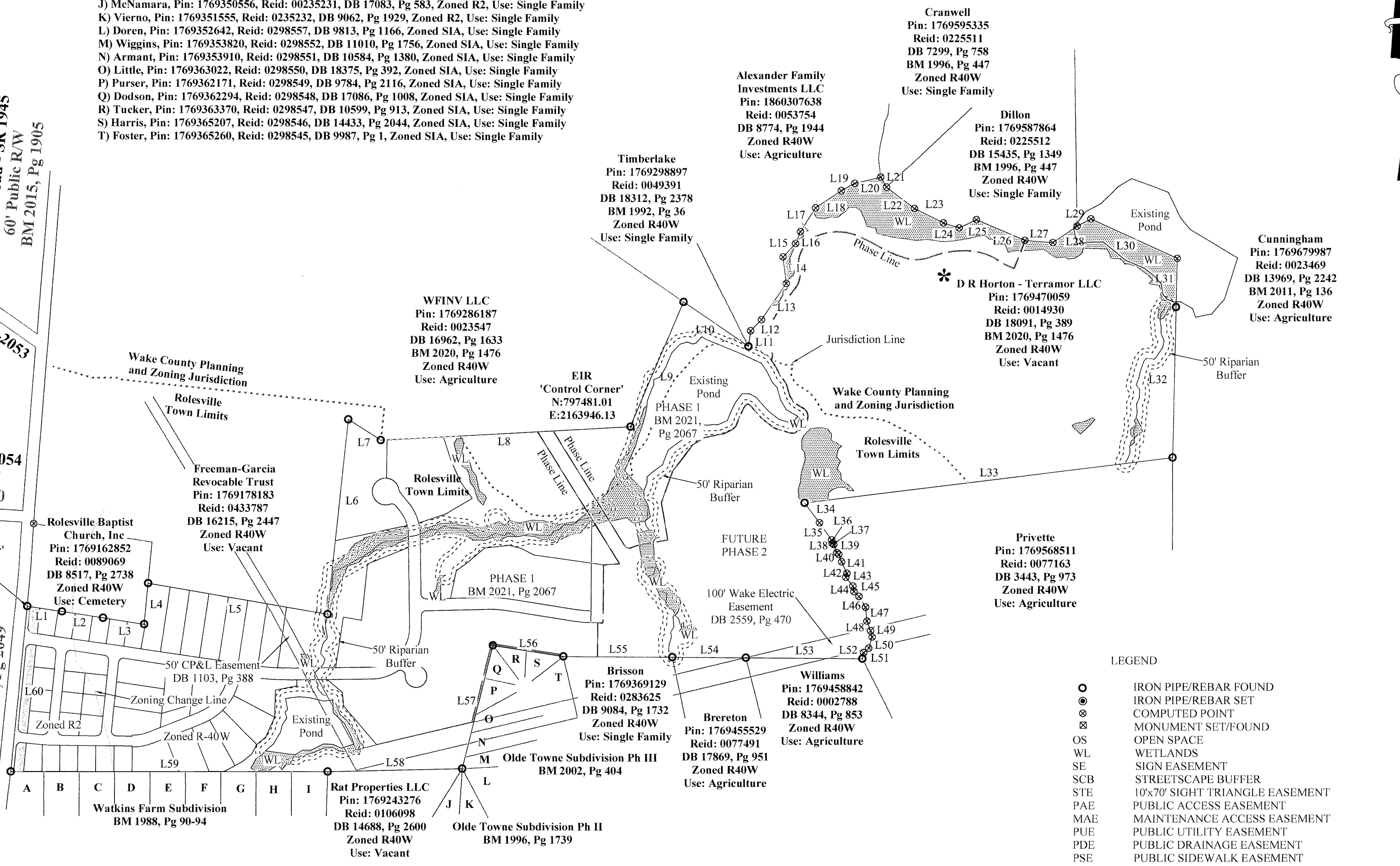
**Jones Dairy Road SR-2053**  
 60' Public R/W  
 BM 1983, Pg 571

**Chalk Road SR-2054**  
 60' Public R/W  
 BM 1986, Pg 380

**Young Street - SR 1945**  
 60' Public R/W  
 BM 2006, Pg 2049

**Teresa Drive**  
 60' Public R/W  
 BM 1971, Pg 66

WAKE COUNTY, NC 89  
 TAMMY L. BRUNNER  
 REGISTER OF DEEDS  
 PRESENTED & RECORDED ON  
 12/21/2021 10:27:07  
 BOOK: BM2021 PAGE: 02283



**LEGEND**

○	IRON PIPE/REBAR FOUND
⊙	IRON PIPE/REBAR SET
⊛	COMPUTED POINT
⊠	MONUMENT SET/FOUND
OS	OPEN SPACE
WL	WETLANDS
SE	SIGN EASEMENT
SCB	STREETSCAPE BUFFER
STE	10'x70' SIGHT TRIANGLE EASEMENT
PAE	PUBLIC ACCESS EASEMENT
MAE	MAINTENANCE ACCESS EASEMENT
PUE	PUBLIC UTILITY EASEMENT
PDE	PUBLIC DRAINAGE EASEMENT
PSE	PUBLIC SIDEWALK EASEMENT
WLE	WATER LINE EASEMENT
CORUE	CITY OF RALEIGH UTILITY EASEMENT
CORSSE	CITY OF RALEIGH SANITARY SEWER EASEMENT
CORFM	CITY OF RALEIGH FORCE MAIN EASEMENT
TORGE	TOWN OF ROLESVILLE GREENWAY EASEMENT
DELPE	DUKE ENERGY LIGHT POLE EASEMENT
PRDE	PRIVATE DRAINAGE EASEMENT
#	STREET ADDRESS
---	NEW LOT - R/W LINE
- - -	EXISTING LOT - R/W LINE
- · - · -	EASEMENT LINE
- · - · - · -	JURISDICTION LINE
- · - · - · - · -	TOP OF BANK - WETLAND LINE
- · - · - · - · - · -	BUFFER LINE
- · - · - · - · - · - · -	PHASE LINE
- · - · - · - · - · - · - · -	ZONING CHANGE LINE



LEGEND

- IRON PIPE/REBAR FOUND
- ⊙ IRON PIPE/REBAR SET
- ⊗ COMPUTED POINT
- ⊠ MONUMENT SET/FOUND
- OS OPEN SPACE
- WL WETLANDS
- SE SIGN EASEMENT
- SCB STREETScape BUFFER
- STE 10'x70' SIGHT TRIANGLE EASEMENT
- PAE PUBLIC ACCESS EASEMENT
- MAE MAINTENANCE ACCESS EASEMENT
- PUE PUBLIC UTILITY EASEMENT
- PDE PUBLIC DRAINAGE EASEMENT
- PSE PUBLIC SIDEWALK EASEMENT
- WLE WATER LINE EASEMENT
- CORUE CITY OF RALEIGH UTILITY EASEMENT
- CORSSE CITY OF RALEIGH SANITARY SEWER EASEMENT
- CORFM CITY OF RALEIGH FORCE MAIN EASEMENT
- TORGE TOWN OF ROLESVILLE GREENWAY EASEMENT
- DELPE DUKE ENERGY LIGHT POLE EASEMENT
- PRDE PRIVATE DRAINAGE EASEMENT
- # STREET ADDRESS
- NEW LOT - R/W LINE
- EXISTING LOT - R/W LINE
- EASEMENT LINE
- JURISDICTION LINE
- TOP OF BANK - WETLAND LINE
- BUFFER LINE
- PHASE LINE
- ZONING CHANGE LINE

NOTE:  
SEE SHEET 5 FOR ANY EASEMENT MEETS  
& BOUNDS NOT DEPICTED ON THIS SHEET

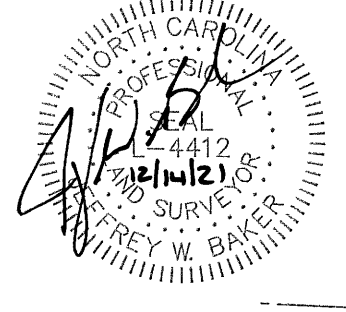
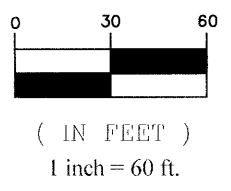
R-2 ZONING SETBACK DATA:  
FRONT YARD: 22.5'  
SIDE YARD: 9'  
CORNER YARD: 16.5'  
REAR YARD: 19'

R-40W ZONING SETBACK DATA:  
FRONT YARD: 38'  
SIDE YARD: 15'  
CORNER YARD: 15'  
REAR YARD: 23'  
\*This is a Conservation Subdivision\*

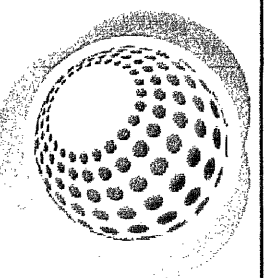
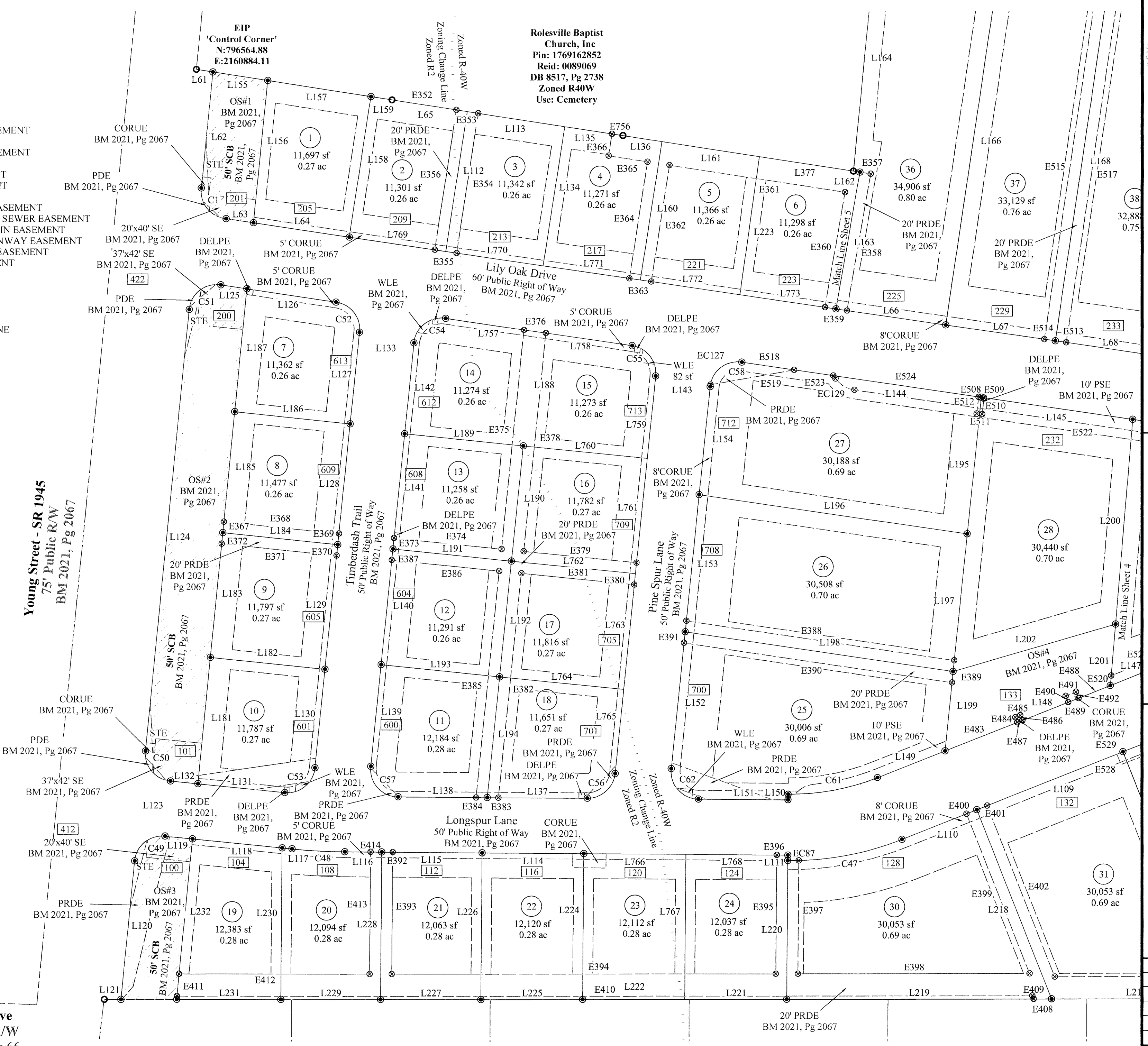
WAKE COUNTY, NC 90  
TAMMY L. BRUNNER  
REGISTER OF DEEDS  
PRESENTED & RECORDED ON  
12/21/2021 10:27:07  
BOOK: BM2021 PAGE: 02284



GRAPHIC SCALE



Teressa Drive  
60' Public R/W  
BM 1971, Pg 66



**Bateman Civil Survey Company**  
Engineers • Surveyors • Planners

2524 Reliance Avenue, Apex, NC 27539  
Phone: 919.577.1080 Fax: 919.577.1081  
NCBELS FIRM No. C-2378

D.R. Horton - Terramor, LLC  
7208 Falls of Neuse Road, #201  
Raleigh, NC, 27615

PLAT OF CORRECTION  
CHANDLER'S RIDGE SUBDIVISION  
PHASE ONE - LOTS 1-34 & 36-41  
Wake Forest Township, Rolesville  
Wake County, North Carolina

Designed By: N/A  
Drawn By: JCH  
Checked By: JWB  
Scale: 1"=60'  
Date: 12/14/2021  
Project Number: 200330

**SHEET**  
**3 OF 15**

BM 2020, Pg 1476

LEGEND

- IRON PIPE/REBAR FOUND
- ⊙ IRON PIPE/REBAR SET
- ⊗ COMPUTED POINT
- ⊠ MONUMENT SET/FOUND
- OS OPEN SPACE
- WL WETLANDS
- SE SIGN EASEMENT
- SCB STREETScape BUFFER
- STE 10'x70' SIGHT TRIANGLE EASEMENT
- PAB PUBLIC ACCESS EASEMENT
- MAE MAINTENANCE ACCESS EASEMENT
- PUE PUBLIC UTILITY EASEMENT
- PDE PUBLIC DRAINAGE EASEMENT
- PSE PUBLIC SIDEWALK EASEMENT
- WLE WATER LINE EASEMENT
- CORUE CITY OF RALEIGH UTILITY EASEMENT
- CORSSE CITY OF RALEIGH SANITARY SEWER EASEMENT
- CORFM CITY OF RALEIGH FORCE MAIN EASEMENT
- TORGE TOWN OF ROLESVILLE GREENWAY EASEMENT
- DELPE DUKE ENERGY LIGHT POLE EASEMENT
- PRDE PRIVATE DRAINAGE EASEMENT
- # STREET ADDRESS
- NEW LOT - R/W LINE
- - - EXISTING LOT - R/W LINE
- - - EASEMENT LINE
- - - JURISDICTION LINE
- - - TOP OF BANK - WETLAND LINE
- - - BUFFER LINE
- - - PHASE LINE
- - - ZONING CHANGE LINE

NOTE:  
SEE SHEET 5 FOR ANY EASEMENT MEETS  
& BOUNDS NOT DEPICTED ON THIS SHEET

R-2 ZONING SETBACK DATA :

- FRONT YARD: 22.5'
- SIDE YARD: 9'
- CORNER YARD: 16.5'
- REAR YARD: 19'

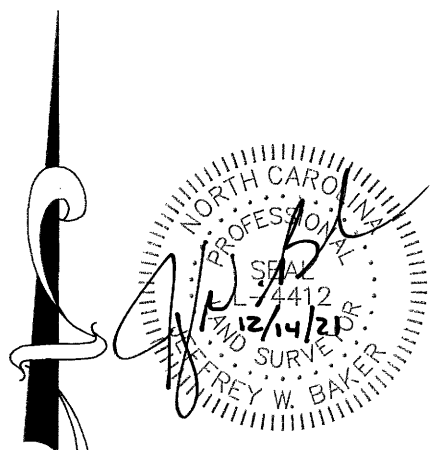
R-40W ZONING SETBACK DATA :

- FRONT YARD: 38'
- SIDE YARD: 15'
- CORNER YARD: 15'
- REAR YARD: 23'

\*This is a Conservation Subdivision\*

WAKE COUNTY, NC 91  
TAMMY L. BRUNNER  
REGISTER OF DEEDS  
PRESENTED & RECORDED ON  
12/21/2021 10:27:07

BOOK:BM2021 PAGE:02285

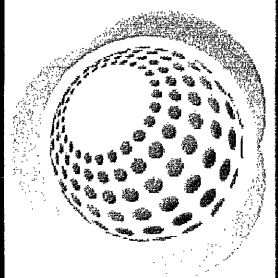
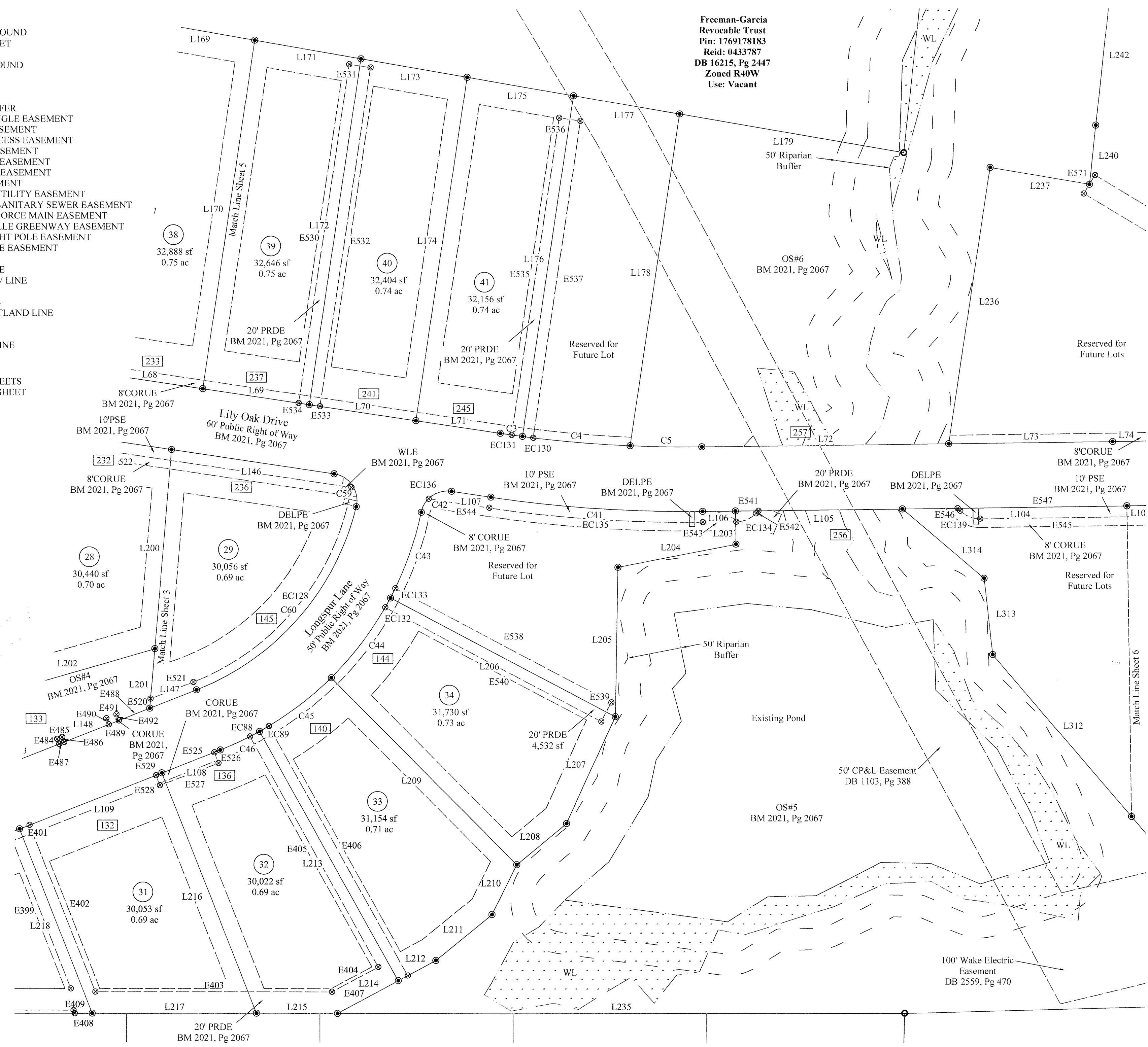


GRAPHIC SCALE



( IN FEET )  
1 inch = 60 ft.

Freeman-Garcia  
Revocable Trust  
Pin: 1769178183  
Reid: 0433787  
DB 16215, Pg 2447  
Zoned R40W  
Use: Vacant



**Bateman Civil Survey Company**  
Engineers • Surveyors • Planners  
2524 Reliance Avenue, Apex, NC 27539  
Phone: 919.577.1080 Fax: 919.577.1081  
NCBELS FIRM No. C-2378

D.R. Horton - Terramor, LLC  
7208 Falls of Neuse Road, #201  
Raleigh, NC, 27615

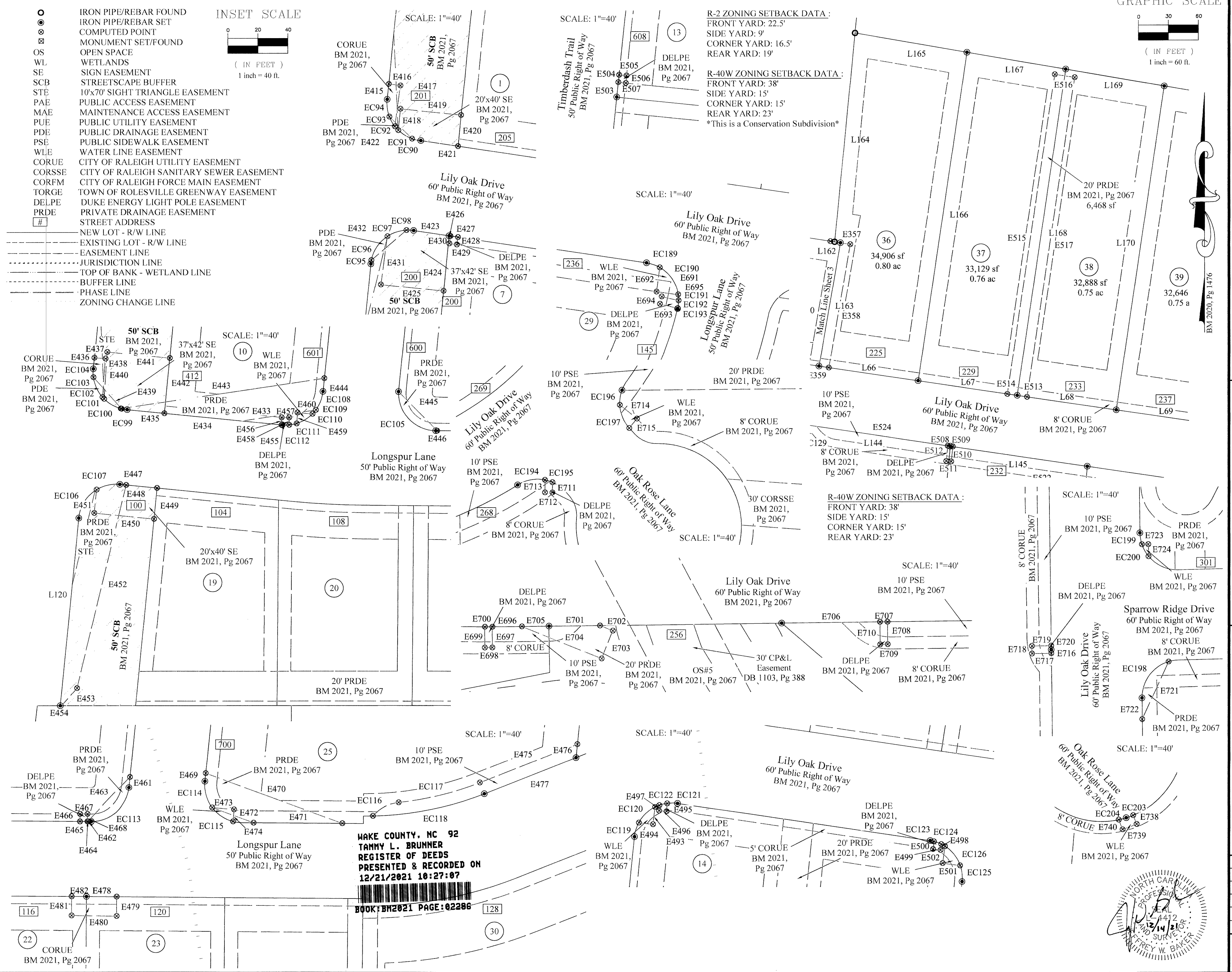
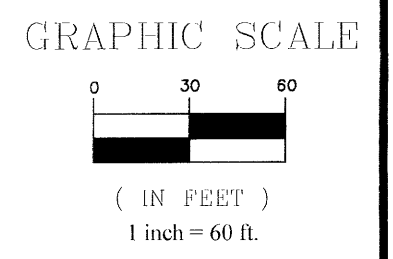
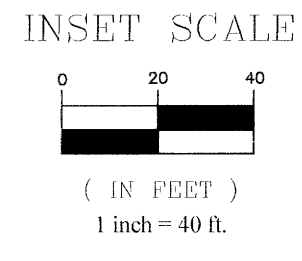
PLAT OF CORRECTION  
CHANDLER'S RIDGE SUBDIVISION  
PHASE ONE - LOTS 1-34 & 36-41  
Wake Forest Township, Rolesville  
Wake County, North Carolina

Designed By: N/A  
Drawn By: JCH  
Checked By: JWB  
Scale: 1"=60'  
Date: 12/14/2021  
Project Number: 200330

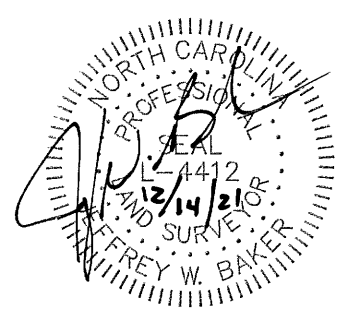
**SHEET  
4 OF 15**

LEGEND

- IRON PIPE/REBAR FOUND
- ⊗ IRON PIPE/REBAR SET
- ⊙ COMPUTED POINT
- ⊠ MONUMENT SET/FOUND
- OPEN SPACE
- WL WETLANDS
- SE SIGN EASEMENT
- SCB STREETScape BUFFER
- STE 10'x70' SIGHT TRIANGLE EASEMENT
- PAE PUBLIC ACCESS EASEMENT
- MAE MAINTENANCE ACCESS EASEMENT
- PUE PUBLIC UTILITY EASEMENT
- PDE PUBLIC DRAINAGE EASEMENT
- PSE PUBLIC SIDEWALK EASEMENT
- WLE WATER LINE EASEMENT
- CORUE CITY OF RALEIGH UTILITY EASEMENT
- CORSSE CITY OF RALEIGH SANITARY SEWER EASEMENT
- CORFM CITY OF RALEIGH FORCE MAIN EASEMENT
- TORGE TOWN OF ROLESVILLE GREENWAY EASEMENT
- DELPE DUKE ENERGY LIGHT POLE EASEMENT
- PRDE PRIVATE DRAINAGE EASEMENT
- # STREET ADDRESS
- NEW LOT - R/W LINE
- - - EXISTING LOT - R/W LINE
- - - EASEMENT LINE
- - - JURISDICTION LINE
- - - TOP OF BANK - WETLAND LINE
- - - BUFFER LINE
- - - PHASE LINE
- - - ZONING CHANGE LINE



WAKE COUNTY, NC 92  
 TAMMY L. BRUNNER  
 REGISTER OF DEEDS  
 PRESENTED & RECORDED ON  
 12/21/2021 10:27:07  
 BOOK: BM2021 PAGE: 02286



**Bateman Civil Survey Company**  
 Engineers Surveyors Planners  
 2524 Reliance Avenue, Apex, NC 27539  
 Phone: 919.577.1080 Fax: 919.577.1081  
 NCBELS FIRM No. C-2378

D.R. Horton - Terramor, LLC  
 7208 Falls of Neuse Road, #201  
 Raleigh, NC, 27615

PLAT OF CORRECTION  
 CHANDLER'S RIDGE SUBDIVISION  
 PHASE ONE - LOTS 1-34 & 36-41  
 Wake Forest Township, Rolesville  
 Wake County, North Carolina

Designed By: N/A  
 Drawn By: JCH  
 Checked By: JWB  
 Scale: Plan 1"=60'  
 Date: 12/14/2021  
 Project Number: 200330

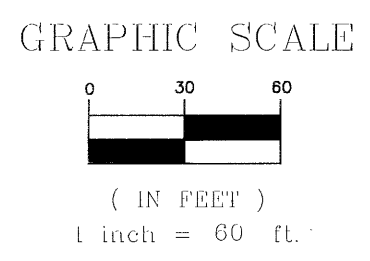
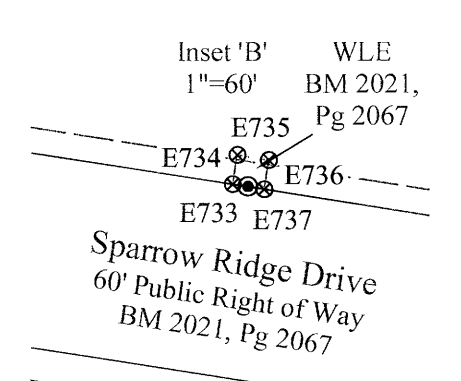
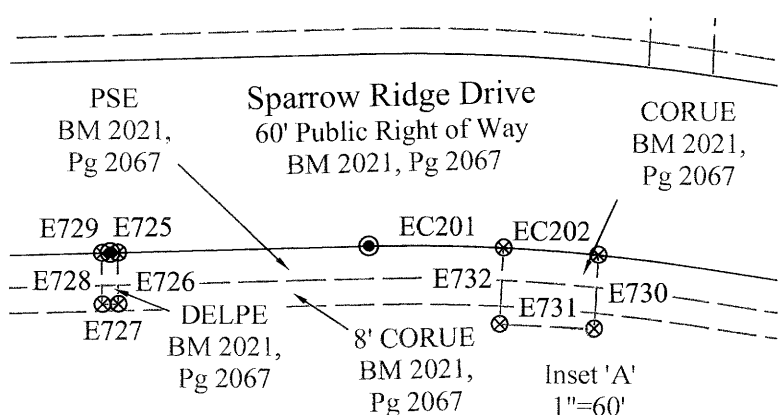
LEGEND

- IRON PIPE/REBAR FOUND
- ⊙ IRON PIPE/REBAR SET
- COMPUTED POINT
- ⊠ MONUMENT SET/FOUND
- OS OPEN SPACE
- WL WETLANDS
- SE SIGN EASEMENT
- SCB STREETScape BUFFER
- STE 10'x70' SIGHT TRIANGLE EASEMENT
- PAE PUBLIC ACCESS EASEMENT
- MAE MAINTENANCE ACCESS EASEMENT
- PUE PUBLIC UTILITY EASEMENT
- PDE PUBLIC DRAINAGE EASEMENT
- PSE PUBLIC SIDEWALK EASEMENT
- WLE WATER LINE EASEMENT
- CORUE CITY OF RALEIGH UTILITY EASEMENT
- CORSSE CITY OF RALEIGH SANITARY SEWER EASEMENT
- CORFM CITY OF RALEIGH FORCE MAIN EASEMENT
- TORGE TOWN OF ROLESVILLE GREENWAY EASEMENT
- DELPE DUKE ENERGY LIGHT POLE EASEMENT
- PRDE PRIVATE DRAINAGE EASEMENT
- # STREET ADDRESS
- NEW LOT - R/W LINE
- EXISTING LOT - R/W LINE
- EASEMENT LINE
- JURISDICTION LINE
- TOP OF BANK - WETLAND LINE
- BUFFER LINE
- PHASE LINE
- ZONING CHANGE LINE

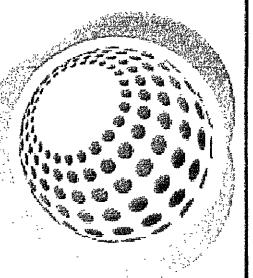
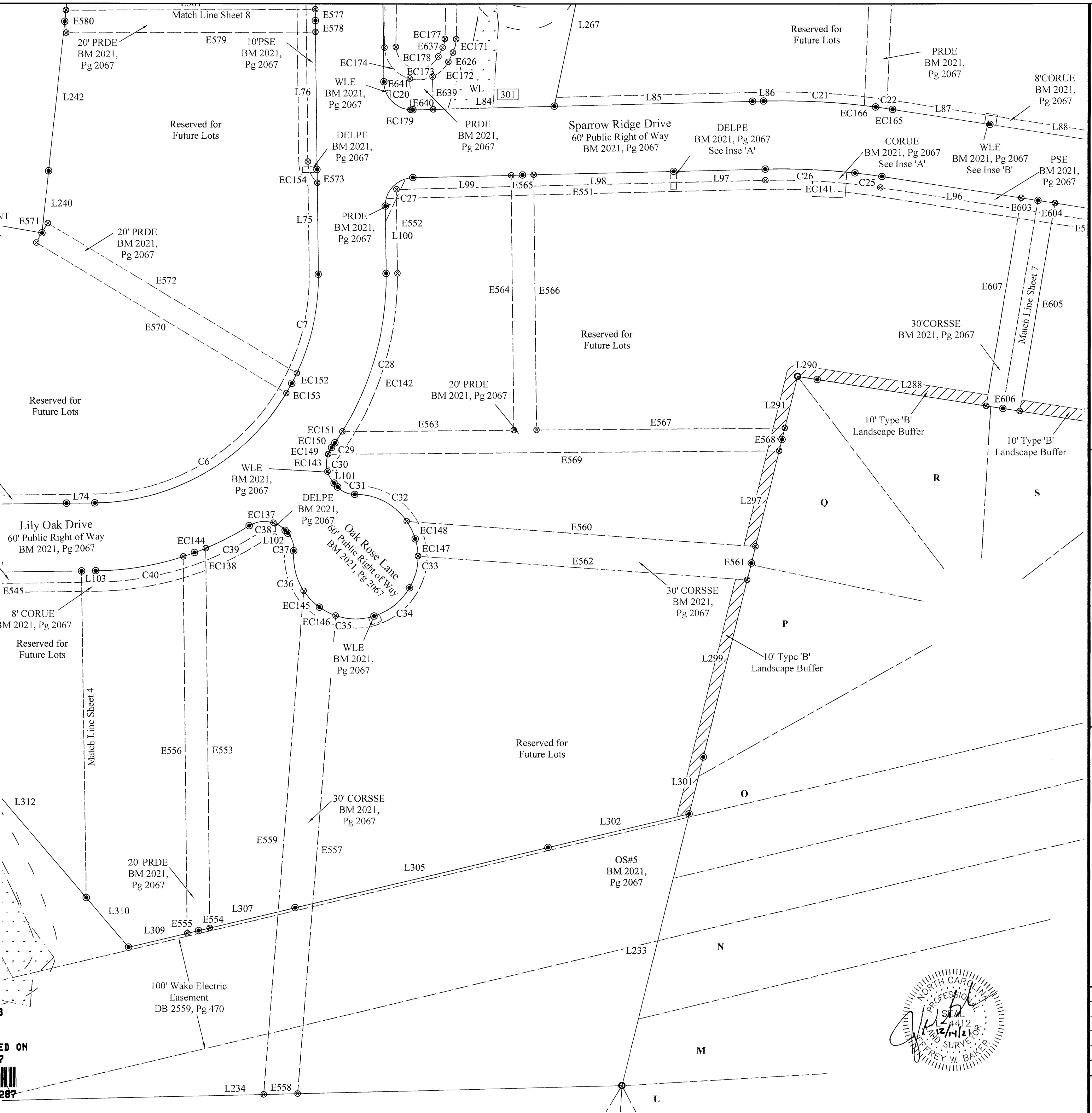
NOTE:  
SEE SHEET 5 FOR ANY EASEMENT MEETS  
& BOUNDS NOT DEPICTED ON THIS SHEET

R-2 ZONING SETBACK DATA :  
FRONT YARD: 22.5'  
SIDE YARD: 9'  
CORNER YARD: 16.5'  
REAR YARD: 19'

R-40W ZONING SETBACK DATA :  
FRONT YARD: 38'  
SIDE YARD: 15'  
CORNER YARD: 15'  
REAR YARD: 23'  
\*This is a Conservation Subdivision\*



MAKE COUNTY, NC 93  
TAMMY L. BRUNNER  
REGISTER OF DEEDS  
PRESENTED & RECORDED ON  
12/21/2021 10:27:07  
BOOK:BM2021 PAGE:02287



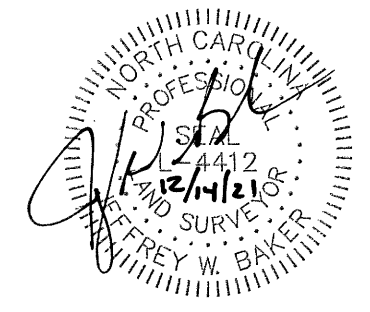
**Bateman Civil Survey Company**  
Engineers • Surveyors • Planners  
2824 Reliance Avenue, Apex, NC 27539  
Phone: 919.577.1080 Fax: 919.577.1081  
NCBELS FIRM No. C-2378

D.R. Horton - Terramor, LLC  
7208 Falls of Neuse Road, #201  
Raleigh, NC, 27615

PLAT OF CORRECTION  
CHANDLER'S RIDGE SUBDIVISION  
PHASE ONE - LOTS 1-34 & 36-41  
Wake Forest Township, Rolesville  
Wake County, North Carolina

Designed By: N/A  
Drawn By: JCH  
Checked By: JWB  
Scale: 1"=60'  
Date: 12/14/2021  
Project Number: 200330

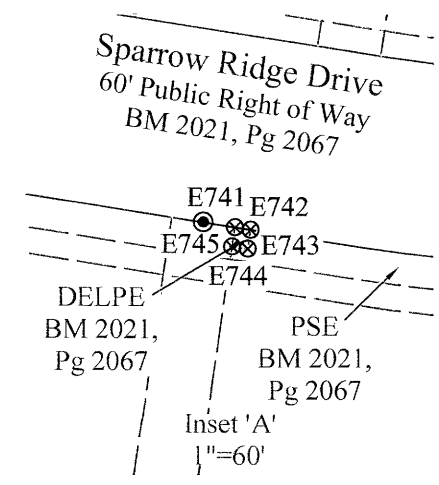
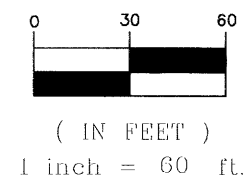
**SHEET  
6 OF 15**



LEGEND

- IRON PIPE/REBAR FOUND
- ⊙ IRON PIPE/REBAR SET
- ⊗ COMPUTED POINT
- ⊠ MONUMENT SET/FOUND
- OS OPEN SPACE
- WL WETLANDS
- SE SIGN EASEMENT
- SCB STREETScape BUFFER
- STE 10'x70' SIGHT TRIANGLE EASEMENT
- PAE PUBLIC ACCESS EASEMENT
- MAE MAINTENANCE ACCESS EASEMENT
- PUE PUBLIC UTILITY EASEMENT
- PDE PUBLIC DRAINAGE EASEMENT
- PSE PUBLIC SIDEWALK EASEMENT
- WLE WATER LINE EASEMENT
- CORUE CITY OF RALEIGH UTILITY EASEMENT
- CORSSE CITY OF RALEIGH SANITARY SEWER EASEMENT
- CORFM CITY OF RALEIGH FORCE MAIN EASEMENT
- TORGE TOWN OF ROLESVILLE GREENWAY EASEMENT
- DELPE DUKE ENERGY LIGHT POLE EASEMENT
- PRDE PRIVATE DRAINAGE EASEMENT
- # STREET ADDRESS
- NEW LOT - R/W LINE
- - - EXISTING LOT - R/W LINE
- - - EASEMENT LINE
- - - JURISDICTION LINE
- - - TOP OF BANK - WETLAND LINE
- - - BUFFER LINE
- - - PHASE LINE
- - - ZONING CHANGE LINE

GRAPHIC SCALE

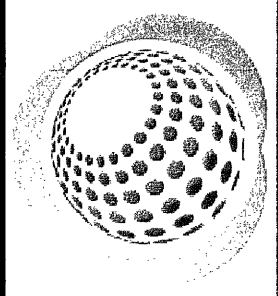
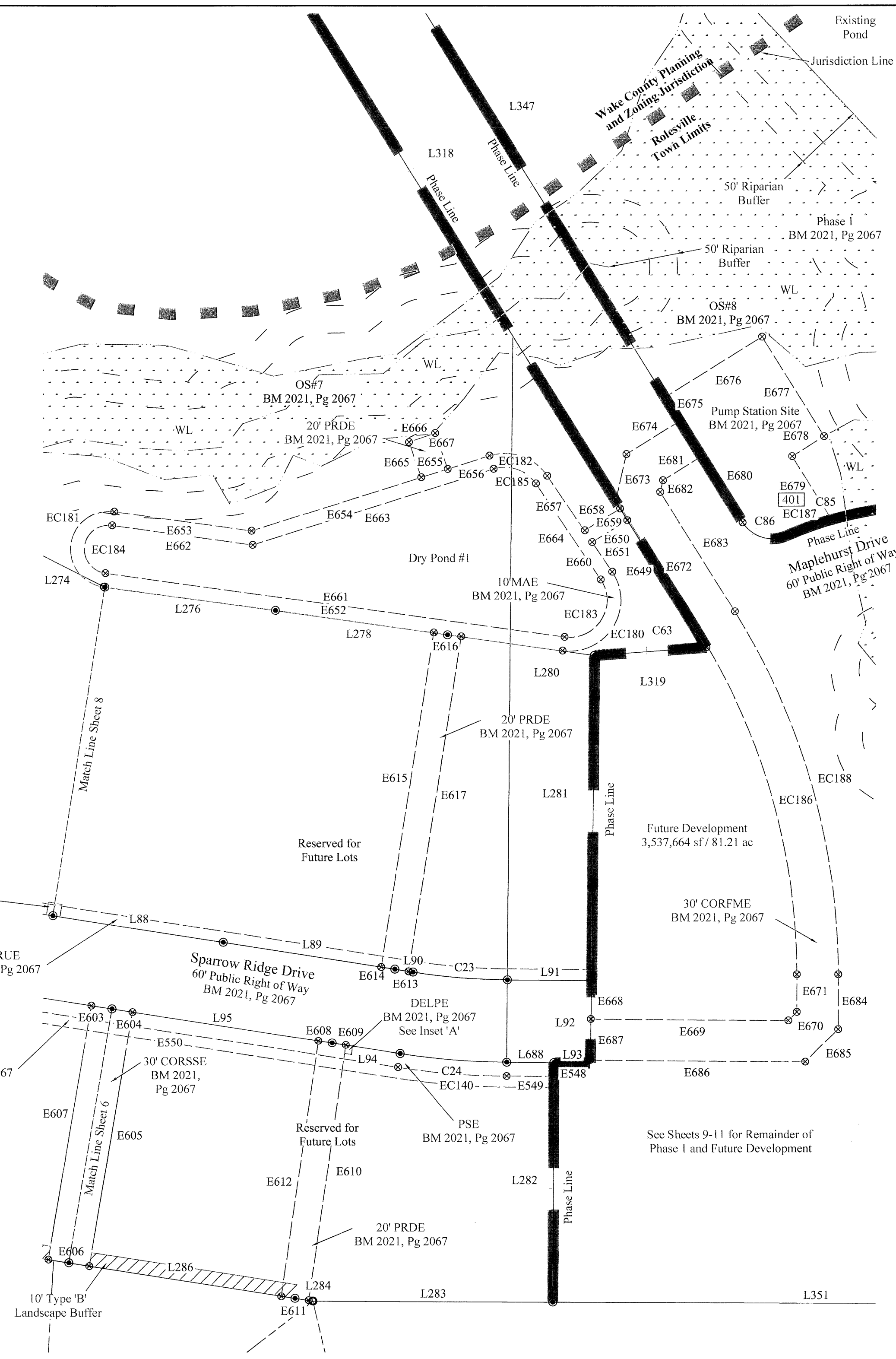


NOTE:  
SEE SHEET 5 FOR ANY EASEMENT MEETS  
& BOUNDS NOT DEPICTED ON THIS SHEET

R-2 ZONING SETBACK DATA :  
FRONT YARD: 22.5'  
SIDE YARD: 9'  
CORNER YARD: 16.5'  
REAR YARD: 19'

R-40W ZONING SETBACK DATA :  
FRONT YARD: 38'  
SIDE YARD: 15'  
CORNER YARD: 15'  
REAR YARD: 23'  
\*This is a Conservation Subdivision\*

WAKE COUNTY, NC 94  
TAMMY L. BRUNNER  
REGISTERED DEEDS  
PRESENTED & RECORDED ON  
12/21/2021 10:27:07

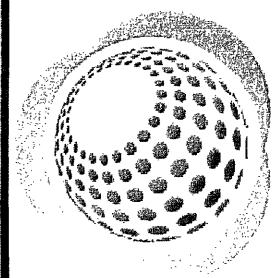


**Bateman Civil Survey Company**  
Engineers • Surveyors • Planners  
2524 Reliance Avenue, Apex, NC 27539  
Phone: 919.577.1080 Fax: 919.577.1081  
NCBELS FIRM No. C-2378

D.R. Horton - Terramor, LLC  
7208 Falls of Neuse Road, #201  
Raleigh, NC, 27615

PLAT OF CORRECTION  
CHANDLER'S RIDGE SUBDIVISION  
PHASE ONE - LOTS 1-34 & 36-41  
Wake Forest Township, Rolesville  
Wake County, North Carolina

Designed By: N/A  
Drawn By: JCH  
Checked By: JWB  
Scale: 1"=60'  
Date: 12/14/2021  
Project Number: 200330



**Bateman Civil Survey Company**  
 Engineers • Surveyors • Planners  
 2524 Reliance Avenue, Apex, NC 27539  
 Phone: 919.577.1080 Fax: 919.577.1081  
 NCBELS FIRM No. C-2378

**D.R. Horton - Terramor, LLC**  
 7208 Falls of Neuse Road, #201  
 Raleigh, NC, 27615

**PLAT OF CORRECTION**  
**CHANDLER'S RIDGE SUBDIVISION**  
**PHASE ONE - LOTS 1-34 & 36-41**  
 Wake Forest Township, Rolesville  
 Wake County, North Carolina

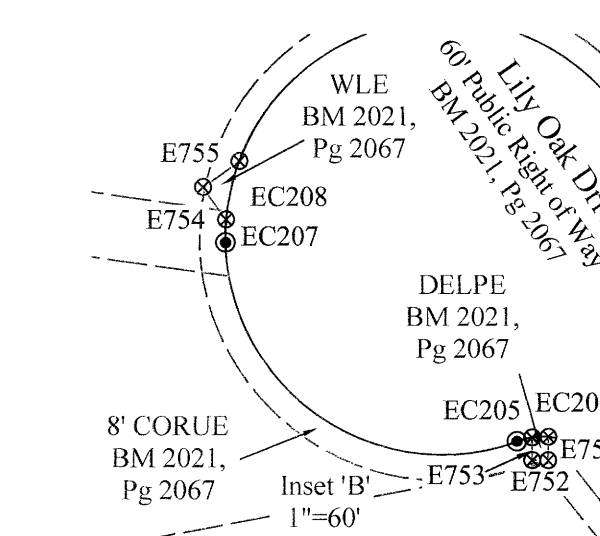
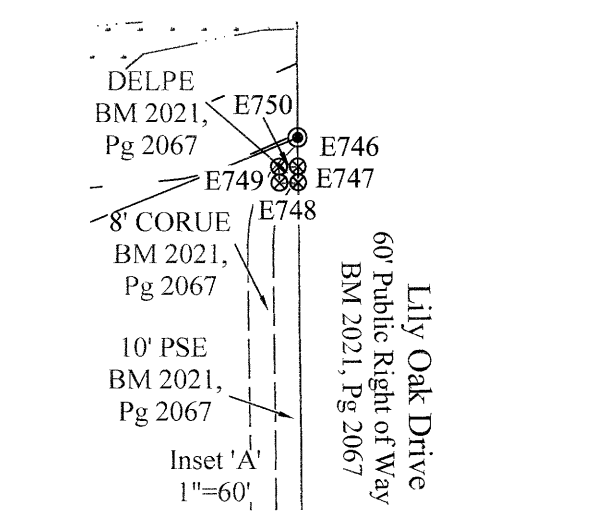
Designed By: N/A  
 Drawn By: JCH  
 Checked By: JWB  
 Scale: 1"=60'  
 Date: 12/14/2021  
 Project Number: 200330

**SHEET**  
**8 OF 15**

LEGEND

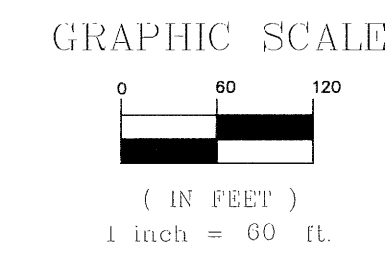
- IRON PIPE/REBAR FOUND
- ⊙ IRON PIPE/REBAR SET
- ⊕ COMPUTED POINT
- ⊗ MONUMENT SET/FOUND
- OS OPEN SPACE
- WL WETLANDS
- SE SIGN EASEMENT
- SCB STREETScape BUFFER
- STE 10'x70' SIGHT TRIANGLE EASEMENT
- PAE PUBLIC ACCESS EASEMENT
- MAE MAINTENANCE ACCESS EASEMENT
- PUE PUBLIC UTILITY EASEMENT
- PDE PUBLIC DRAINAGE EASEMENT
- PSE PUBLIC SIDEWALK EASEMENT
- WLE WATER LINE EASEMENT
- CORUE CITY OF RALEIGH UTILITY EASEMENT
- CORSSE CITY OF RALEIGH SANITARY SEWER EASEMENT
- CORFM CITY OF RALEIGH FORCE MAIN EASEMENT
- TORGE TOWN OF ROLESVILLE GREENWAY EASEMENT
- DELPE DUKE ENERGY LIGHT POLE EASEMENT
- PRDE PRIVATE DRAINAGE EASEMENT
- # STREET ADDRESS
- NEW LOT - R/W LINE
- EXISTING LOT - R/W LINE
- EASEMENT LINE
- JURISDICTION LINE
- TOP OF BANK - WETLAND LINE
- BUFFER LINE
- PHASE LINE
- ZONING CHANGE LINE

NOTE:  
 SEE SHEET 5 FOR ANY EASEMENT MEETS  
 & BOUNDS NOT DEPICTED ON THIS SHEET



**R-2 ZONING SETBACK DATA:**  
 FRONT YARD: 22.5'  
 SIDE YARD: 9'  
 CORNER YARD: 16.5'  
 REAR YARD: 19'

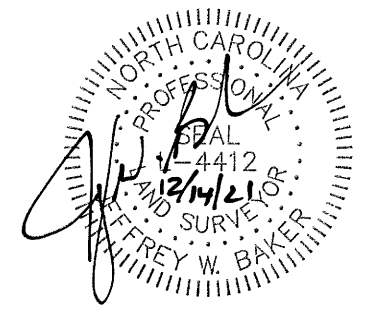
**R-40W ZONING SETBACK DATA:**  
 FRONT YARD: 38'  
 SIDE YARD: 15'  
 CORNER YARD: 15'  
 REAR YARD: 23'  
 \*This is a Conservation Subdivision\*



**WFINV LLC**  
 Pin: 1769286187  
 Reid: 0023547  
 DB 16962, Pg 1633  
 BM 2020, Pg 1476  
 Zoned R40W  
 Use: Agriculture

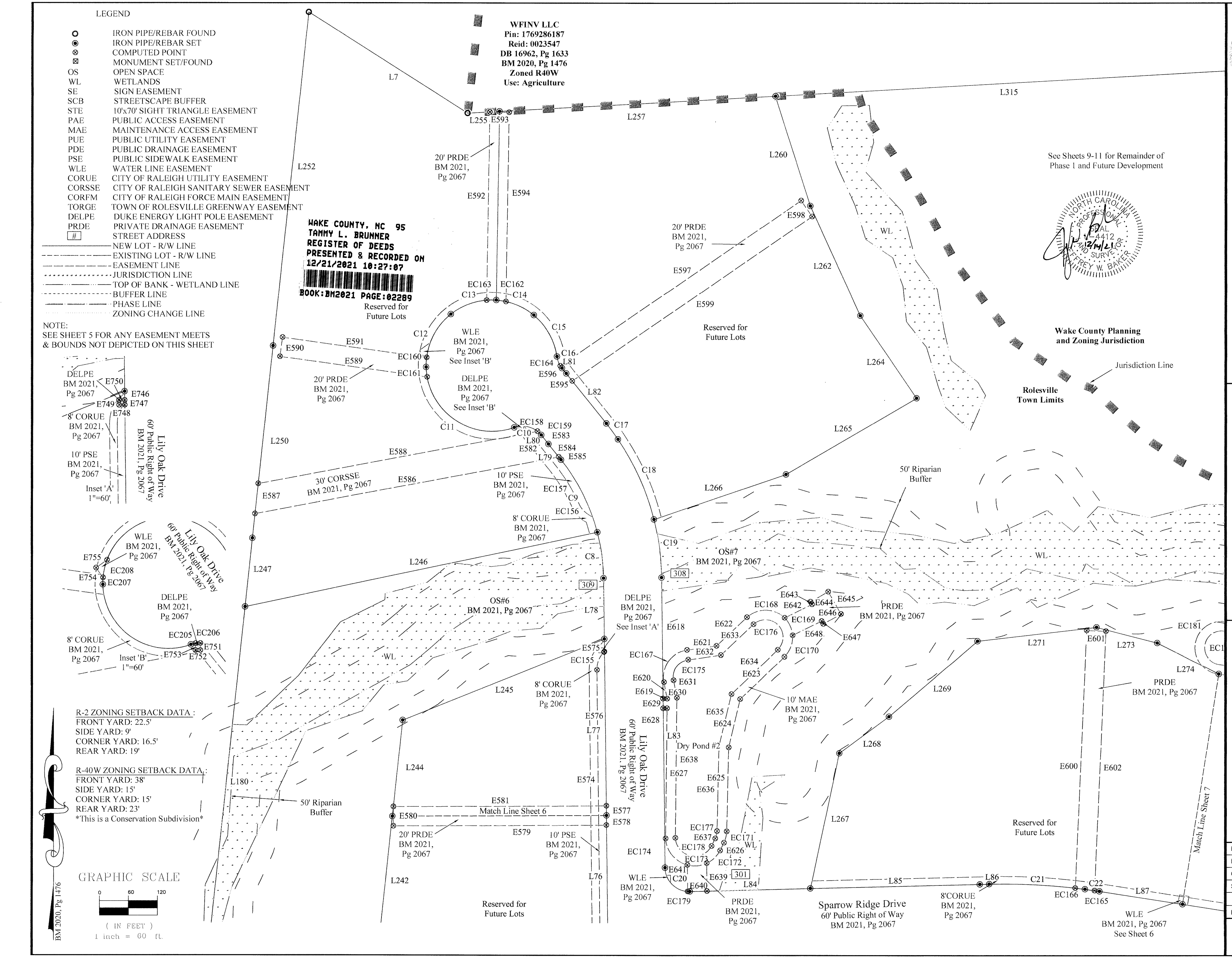
**WAKE COUNTY, NC 95**  
**TAMMY L. BRUNNER**  
**REGISTER OF DEEDS**  
**PRESENTED & RECORDED ON**  
**12/21/2021 10:27:07**  
**BOOK: BM2021 PAGE: 02289**  
 Reserved for  
 Future Lots

See Sheets 9-11 for Remainder of  
 Phase 1 and Future Development



Wake County Planning  
 and Zoning Jurisdiction

Rolesville  
 Town Limits

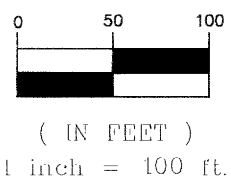


Match Line Sheet 7

Match Line Sheet 6



GRAPHIC SCALE

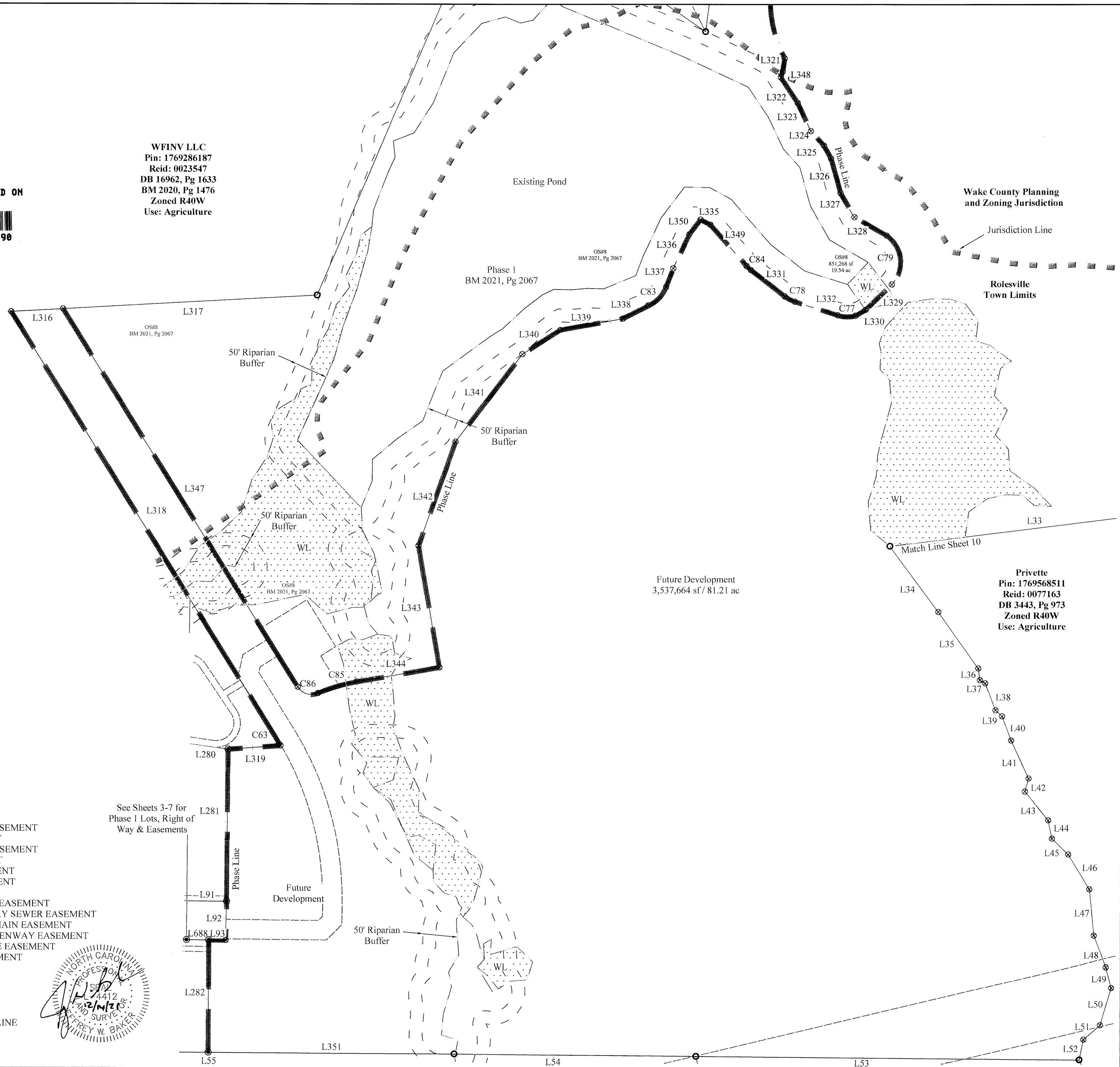


WAKE COUNTY, NC 96  
TAMMY L. BRUNNER  
REGISTER OF DEEDS  
PRESENTED & RECORDED ON  
12/21/2021 10:27:07  
BOOK: BM2021 PAGE: 02290



WFINV LLC  
Pin: 1769286187  
Reid: 0023547  
DB 16962, Pg 1633  
BM 2020, Pg 1476  
Zoned R40W  
Use: Agriculture

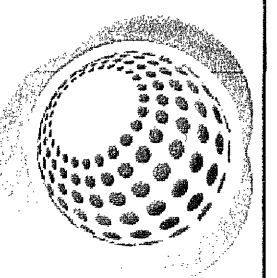
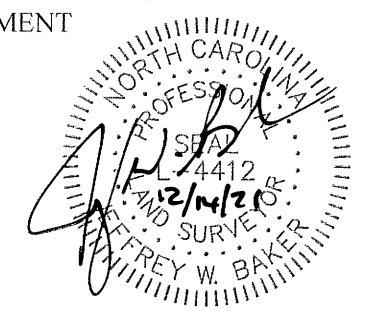
BM 2020, Pg 1476



LEGEND

- IRON PIPE/REBAR FOUND
- ⊙ IRON PIPE/REBAR SET
- ⊗ COMPUTED POINT
- ⊠ MONUMENT SET/FOUND
- OS OPEN SPACE
- WL WETLANDS
- SE SIGN EASEMENT
- SCB STREETScape BUFFER
- STE 10'x70' SIGHT TRIANGLE EASEMENT
- PAE PUBLIC ACCESS EASEMENT
- MAE MAINTENANCE ACCESS EASEMENT
- PUE PUBLIC UTILITY EASEMENT
- PDE PUBLIC DRAINAGE EASEMENT
- PSE PUBLIC SIDEWALK EASEMENT
- WLE WATER LINE EASEMENT
- CORUE CITY OF RALEIGH UTILITY EASEMENT
- CORSSE CITY OF RALEIGH SANITARY SEWER EASEMENT
- CORFM CITY OF RALEIGH FORCE MAIN EASEMENT
- TORGE TOWN OF ROLESVILLE GREENWAY EASEMENT
- DELPE DUKE ENERGY LIGHT POLE EASEMENT
- PRDE PRIVATE DRAINAGE EASEMENT
- # STREET ADDRESS
- NEW LOT - R/W LINE
- EXISTING LOT - R/W LINE
- - - EASEMENT LINE
- ⋯ JURISDICTION LINE
- ⋯ TOP OF BANK - WETLAND LINE
- ⋯ BUFFER LINE
- ⋯ PHASE LINE
- ⋯ ZONING CHANGE LINE

See Sheets 3-7 for  
Phase 1 Lots, Right of  
Way & Easements



**Bateman Civil Survey Company**  
Engineers • Surveyors • Planners  
2524 Reliance Avenue, Apex, NC 27539  
Phone: 919.577.1080 Fax: 919.577.1081  
NCBELS FIRM No. C-2378

D.R. Horton - Terramor, LLC  
7208 Falls of Neuse Road, #201  
Raleigh, NC, 27615

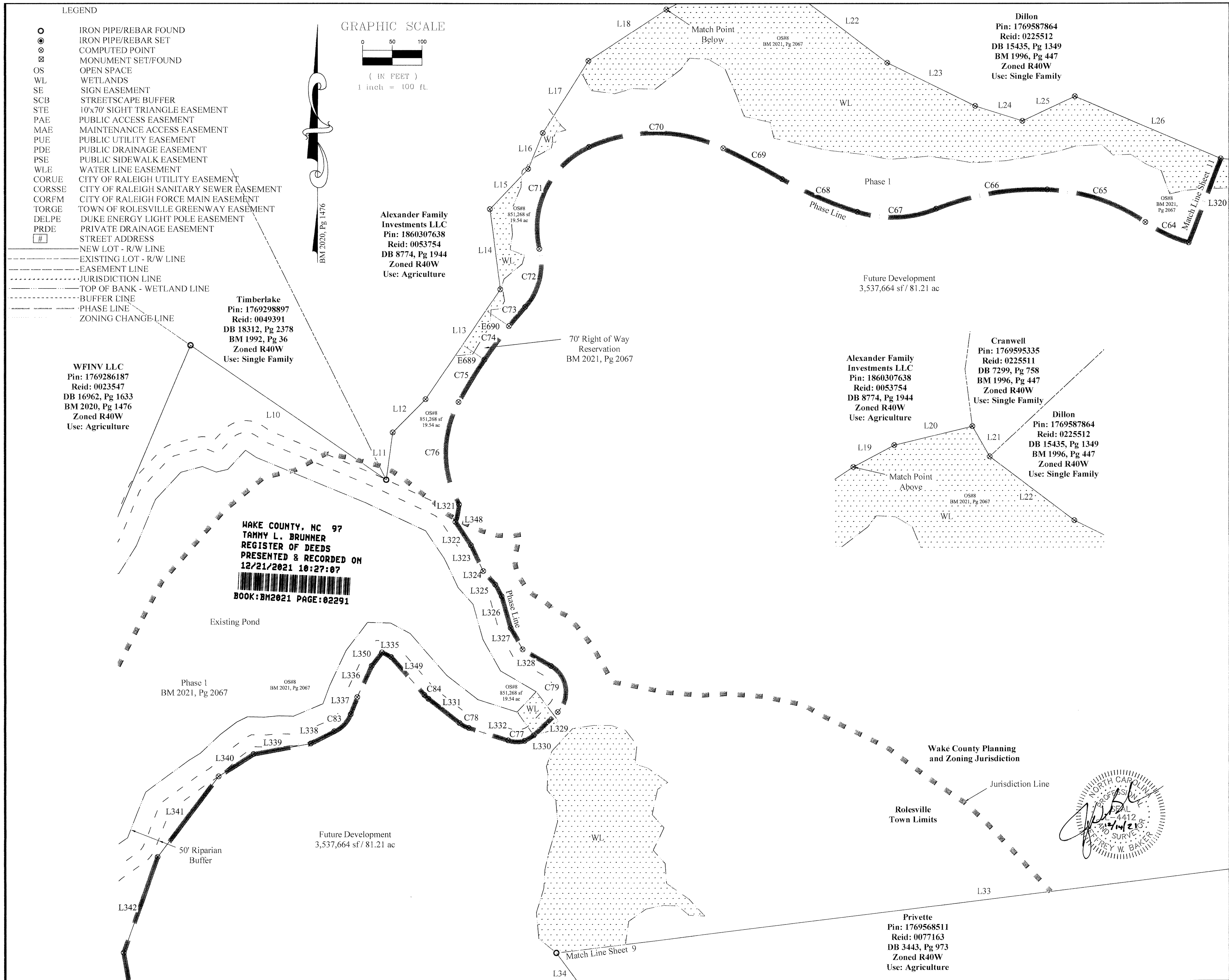
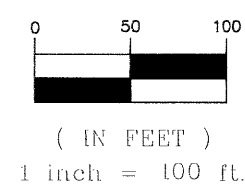
PLAT OF CORRECTION  
CHANDLER'S RIDGE SUBDIVISION  
PHASE ONE - LOTS 1-34 & 36-41  
Wake Forest Township, Rolesville  
Wake County, North Carolina

Designed By: N/A
Drawn By: JCH
Checked By: JWB
Scale: 1"=100'
Date: 12/14/2021
Project Number: 200330

LEGEND

- IRON PIPE/REBAR FOUND
- ⊙ IRON PIPE/REBAR SET
- ⊗ COMPUTED POINT
- ⊠ MONUMENT SET/FOUND
- OS OPEN SPACE
- WL WETLANDS
- SE SIGN EASEMENT
- SCB STREETScape BUFFER
- STE 10'x70' SIGHT TRIANGLE EASEMENT
- PAE PUBLIC ACCESS EASEMENT
- MAE MAINTENANCE ACCESS EASEMENT
- PUE PUBLIC UTILITY EASEMENT
- PDE PUBLIC DRAINAGE EASEMENT
- PSE PUBLIC SIDEWALK EASEMENT
- WLE WATER LINE EASEMENT
- CORUE CITY OF RALEIGH UTILITY EASEMENT
- CORSSE CITY OF RALEIGH SANITARY SEWER EASEMENT
- CORFM CITY OF RALEIGH FORCE MAIN EASEMENT
- TORGE TOWN OF ROLESVILLE GREENWAY EASEMENT
- DELPE DUKE ENERGY LIGHT POLE EASEMENT
- PRDE PRIVATE DRAINAGE EASEMENT
- # STREET ADDRESS
- NEW LOT - R/W LINE
- EXISTING LOT - R/W LINE
- EASEMENT LINE
- JURISDICTION LINE
- TOP OF BANK - WETLAND LINE
- BUFFER LINE
- PHASE LINE
- ZONING CHANGE-LINE

GRAPHIC SCALE



WAKE COUNTY, NC 97  
 TAMMY L. BRUNNER  
 REGISTER OF DEEDS  
 PRESENTED & RECORDED ON  
 12/21/2021 10:27:07  

 BOOK: BM2021 PAGE: 02291

WFINV LLC  
 Pin: 1769286187  
 Reid: 0023547  
 DB 16962, Pg 1633  
 BM 2020, Pg 1476  
 Zoned R40W  
 Use: Agriculture

Timberlake  
 Pin: 1769298897  
 Reid: 0049391  
 DB 18312, Pg 2378  
 BM 1992, Pg 36  
 Zoned R40W  
 Use: Single Family

Alexander Family  
 Investments LLC  
 Pin: 1860307638  
 Reid: 0053754  
 DB 8774, Pg 1944  
 Zoned R40W  
 Use: Agriculture

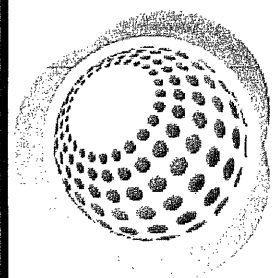
70' Right of Way  
 Reservation  
 BM 2021, Pg 2067

Alexander Family  
 Investments LLC  
 Pin: 1860307638  
 Reid: 0053754  
 DB 8774, Pg 1944  
 Zoned R40W  
 Use: Agriculture

Cranwell  
 Pin: 1769595335  
 Reid: 0225511  
 DB 7299, Pg 758  
 BM 1996, Pg 447  
 Zoned R40W  
 Use: Single Family

Dillon  
 Pin: 1769587864  
 Reid: 0225512  
 DB 15435, Pg 1349  
 BM 1996, Pg 447  
 Zoned R40W  
 Use: Single Family

Privette  
 Pin: 1769568511  
 Reid: 0077163  
 DB 3443, Pg 973  
 Zoned R40W  
 Use: Agriculture



**Bateman Civil Survey Company**  
 Engineers • Surveyors • Planners  
 2524 Reliance Avenue, Apex, NC 27539  
 Phone: 919.577.1080 Fax: 919.577.1081  
 NCBELS FIRM No. C-2378

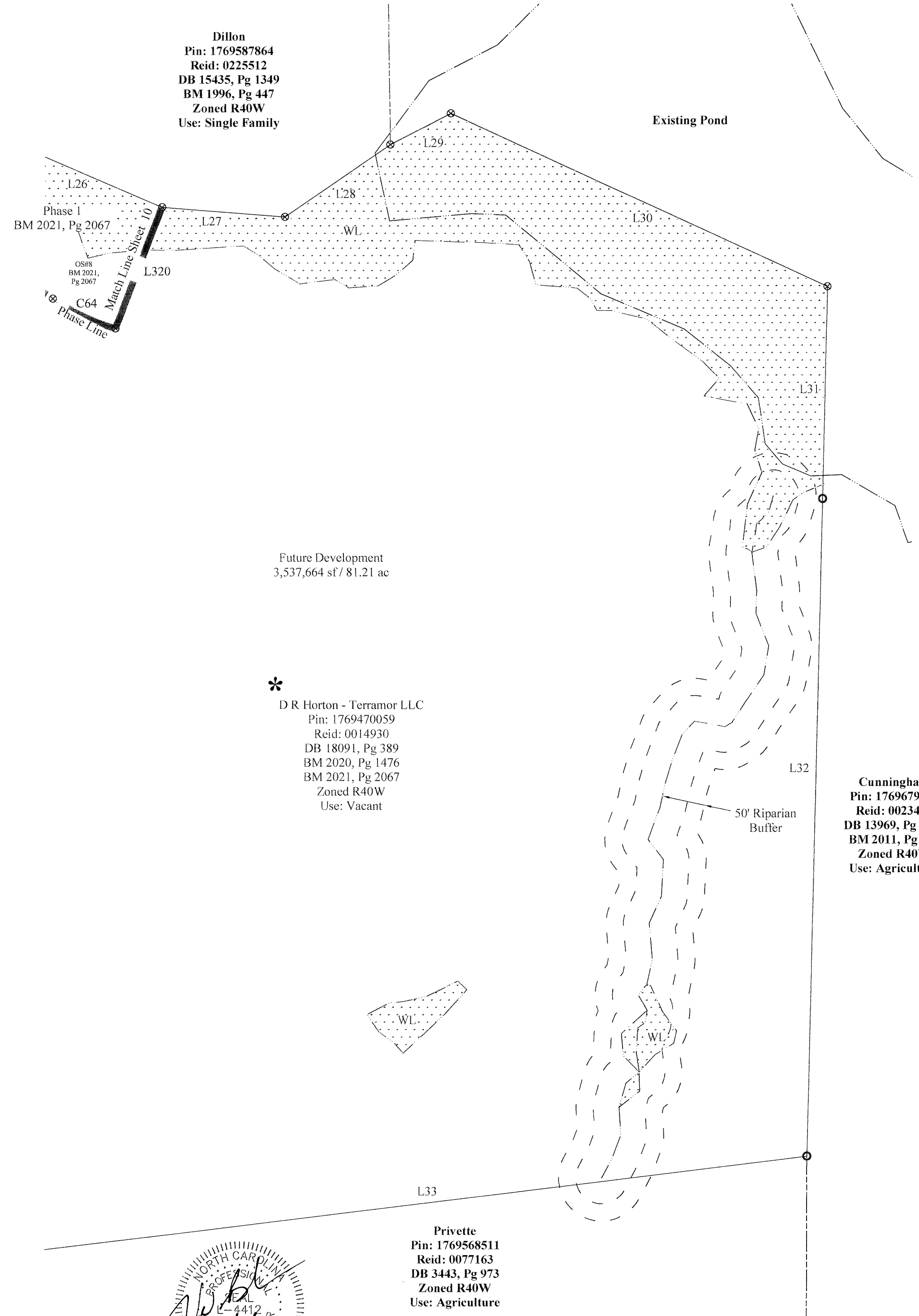
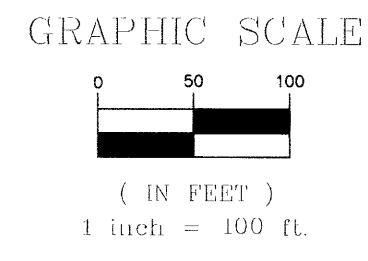
D.R. Horton - Terramor, LLC  
 7208 Falls of Neuse Road, #201  
 Raleigh, NC, 27615

PLAT OF CORRECTION  
 CHANDLER'S RIDGE SUBDIVISION  
 PHASE ONE - LOTS 1-34 & 36-41  
 Wake Forest Township, Rolesville  
 Wake County, North Carolina

Designed By: N/A  
 Drawn By: JCH  
 Checked By: JWB  
 Scale: 1"=100'  
 Date: 12/14/2021  
 Project Number: 200330

LEGEND

- IRON PIPE/REBAR FOUND
- ⊙ IRON PIPE/REBAR SET
- ⊗ COMPUTED POINT
- ⊠ MONUMENT SET/FOUND
- OS OPEN SPACE
- WL WETLANDS
- SE SIGN EASEMENT
- SCB STREETScape BUFFER
- STE 10'x70' SIGHT TRIANGLE EASEMENT
- PAE PUBLIC ACCESS EASEMENT
- MAE MAINTENANCE ACCESS EASEMENT
- PUE PUBLIC UTILITY EASEMENT
- PDE PUBLIC DRAINAGE EASEMENT
- PSE PUBLIC SIDEWALK EASEMENT
- WLE WATER LINE EASEMENT
- CORUE CITY OF RALEIGH UTILITY EASEMENT
- CORSSE CITY OF RALEIGH SANITARY SEWER EASEMENT
- CORFM CITY OF RALEIGH FORCE MAIN EASEMENT
- TORGE TOWN OF ROLESVILLE GREENWAY EASEMENT
- DELPE DUKE ENERGY LIGHT POLE EASEMENT
- PRDE PRIVATE DRAINAGE EASEMENT
- # STREET ADDRESS
- NEW LOT - R/W LINE
- - - EXISTING LOT - R/W LINE
- - - EASEMENT LINE
- - - JURISDICTION LINE
- - - TOP OF BANK - WETLAND LINE
- - - BUFFER LINE
- - - PHASE LINE
- - - ZONING CHANGE LINE



Dillon  
Pin: 1769587864  
Reid: 0225512  
DB 15435, Pg 1349  
BM 1996, Pg 447  
Zoned R40W  
Use: Single Family

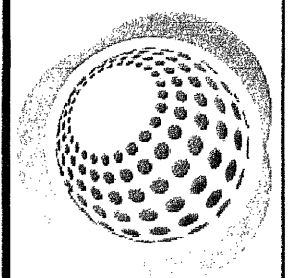
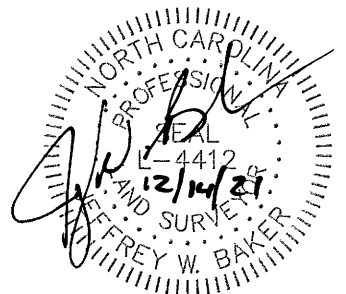
Future Development  
3,537,664 sf / 81.21 ac

\*  
D R Horton - Terramor LLC  
Pin: 1769470059  
Reid: 0014930  
DB 18091, Pg 389  
BM 2020, Pg 1476  
BM 2021, Pg 2067  
Zoned R40W  
Use: Vacant

Cunningham  
Pin: 1769679987  
Reid: 0023469  
DB 13969, Pg 2242  
BM 2011, Pg 136  
Zoned R40W  
Use: Agriculture

Privette  
Pin: 1769568511  
Reid: 0077163  
DB 3443, Pg 973  
Zoned R40W  
Use: Agriculture

WAKE COUNTY, NC 98  
TAMMY L. BRUNNER  
REGISTERED OF DEEDS  
PRESENTED & RECORDED ON  
12/21/2021 10:27:07  
BOOK: BM2021 PAGE: 02292



**Bateman Civil Survey Company**  
Engineers • Surveyors • Planners  
2524 Reliance Avenue, Apex, NC 27539  
Phone: 919.577.1080 Fax: 919.577.1081  
NCBELS FIRM No. C-2378

D.R. Horton - Terramor, LLC  
7208 Falls of Neuse Road, #201  
Raleigh, NC, 27615

PLAT OF CORRECTION  
CHANDLER'S RIDGE SUBDIVISION  
PHASE ONE - LOTS 1-34 & 36-41  
Wake Forest Township, Rolesville  
Wake County, North Carolina

Designed By: N/A
Drawn By: JCH
Checked By: JWB
Scale: 1"=100'
Date: 12/14/2021
Project Number: 200330







