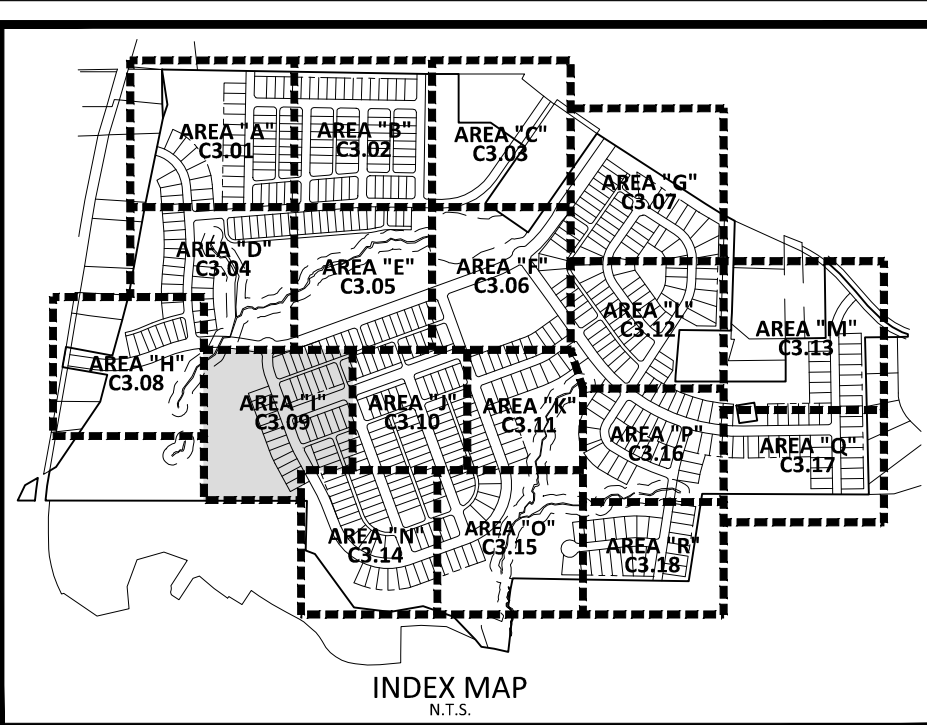
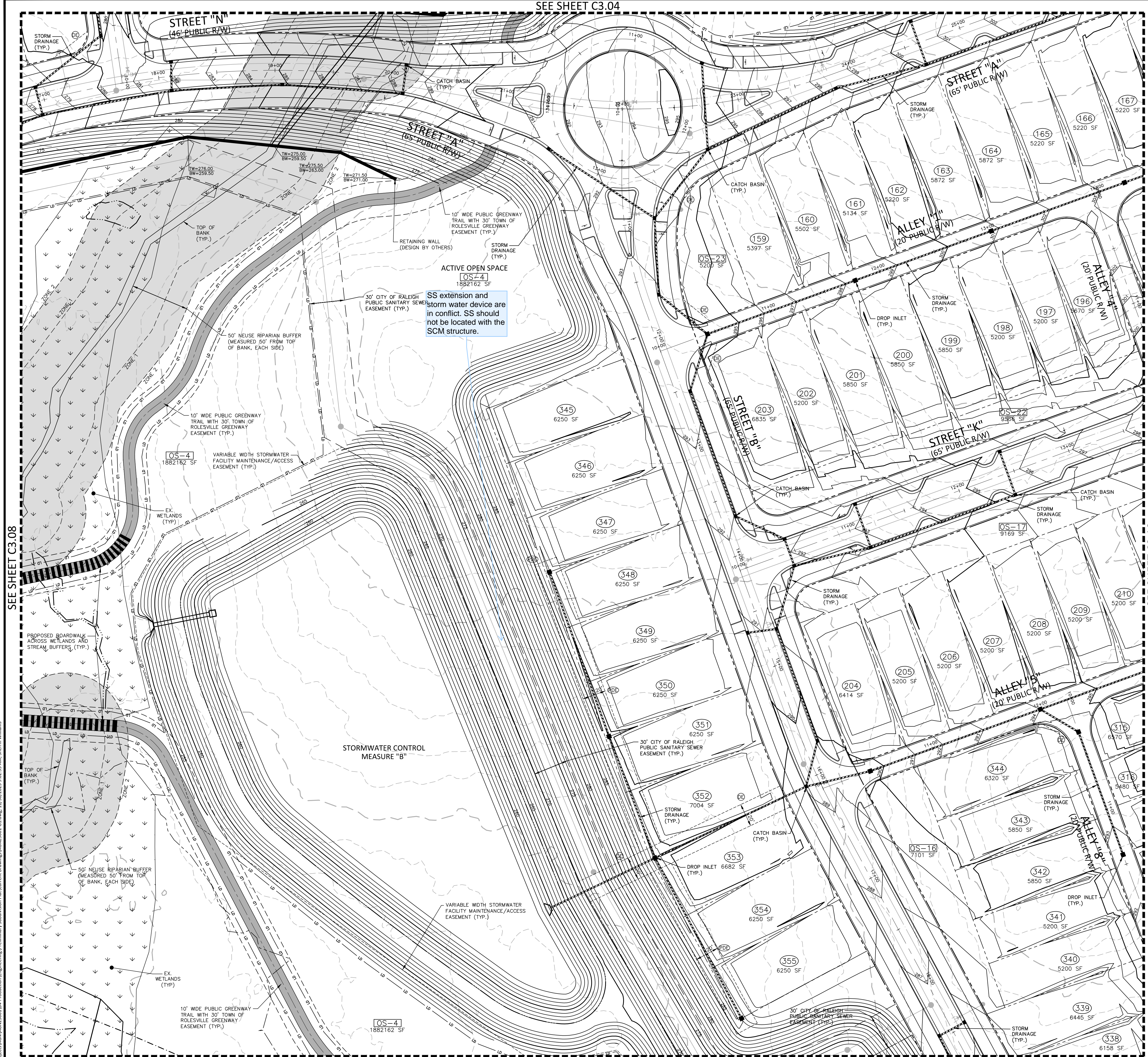


SEE SHEET C3.04



GRADING LEGEND

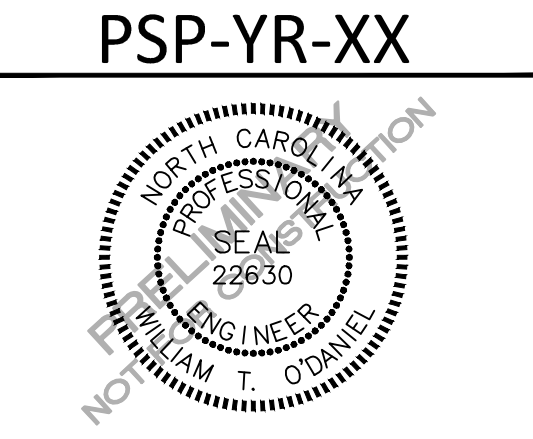
- FLARED END SECTION
- ENDWALL SECTION
- CATCH BASIN
- DROP INLET
- STORM SERVICE INLET
- JUNCTION BOX
- DRAINAGE FLOW ARROW
- TOP & BOTTOM CURB ELEVATIONS
- TOP OF WALL ELEVATION
- BOTTOM OF WALL ELEVATION
(NOTE: BOTTOM OF WALL IS GROUND ELEVATION NOT WALL FOUNDATION)
- SPOT ELEVATION
- STORM DRAINAGE
- STORM SERVICE LINE
- TREE PROTECTION FENCE
- LIMITS OF DISTURBANCE
- MAJOR CONTOUR
- MINOR CONTOUR
- EXISTING MAJOR CONTOUR
- EXISTING MINOR CONTOUR
- EASEMENT LINE

McADAMS
The John R. McAdams Company, Inc.
2905 Meridian Parkway
Durham, NC 27713
phone 919. 361. 5000
fax 919. 361. 2269
license number: C-0293, C-187
www.mcadamsco.com

CLIENT
ALLIANCE GROUP OF NC, LLC
7208 FALLS OF NEUSE RD, SUITE 101
RALEIGH, NORTH CAROLINA 27615
CONTACT: JACOB ANDERSON
PHONE: 919. 239. 9486



PEARCE FARM
PRELIMINARY PLAT PLANS
BURLINGTON MILLS ROAD
TOWN OF ROLESVILLE, WAKE FOREST TOWNSHIP,
WAKE COUNTY, NORTH CAROLINA



REVISIONS

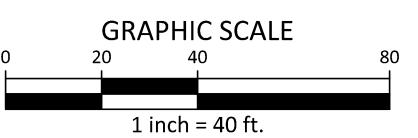
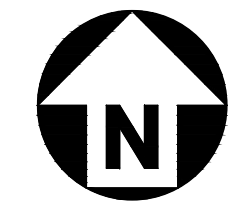
NO.	DATE

PLAN INFORMATION

PROJECT NO. AGN23001
FILENAME AGN23001-G1
CHECKED BY .
DRAWN BY .
SCALE 1"=40'
DATE 12.01.2023

GRADING AND STORM DRAINAGE PLAN
AREA "I"
C3.09

SEE SHEET C0.01 FOR ALL PROJECT, SITE, GRADING, STORM DRAINAGE AND UTILITY NOTES



PRELIMINARY DRAWING - NOT RELEASED FOR CONSTRUCTION

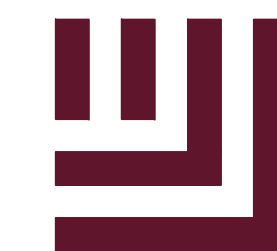
SEE SHEET C3.08

SEE SHEET C3.10

SEE SHEET C3.14

M:\Projects\AGN\AGN23001\04-Production\Engineering\Preliminary Subdivision Plat\Current Drawings\AGN23001-G1.dwg, 11/20/2023 9:02:27 AM, Williams, 1:1

M:\Projects\AGN\AGN23001\04-Production\Engineering\Preliminary Subdivision Plat\Current Drawings\AGN23001-G1.dwg, 11/20/2023 9:02:35 AM, Sherill Williams



McADAMS

The John R. McAdams Company, Inc.
2905 Meridian Parkway
Durham, NC 27713

phone 919. 361. 5000
fax 919. 361. 2269
license number: C-0293, C-187

www.mcadamsco.com

CLIENT

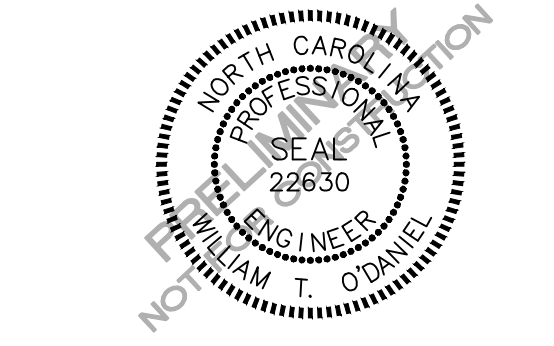
ALLIANCE GROUP OF NC, LLC
7208 FALLS OF NEUSE RD, SUITE 101
RALEIGH, NORTH CAROLINA 27615
CONTACT: JACOB ANDERSON
PHONE: 919. 239. 9486



AGNC
BROKERAGE | CONSULTING | PLANNING

PEARCE FARM
PRELIMINARY PLAT PLANS
BURLINGTON MILLS ROAD
TOWN OF ROLESVILLE, WAKE FOREST TOWNSHIP,
WAKE COUNTY, NORTH CAROLINA

PSP-YR-XX



REVISIONS

NO.	DATE
-----	------

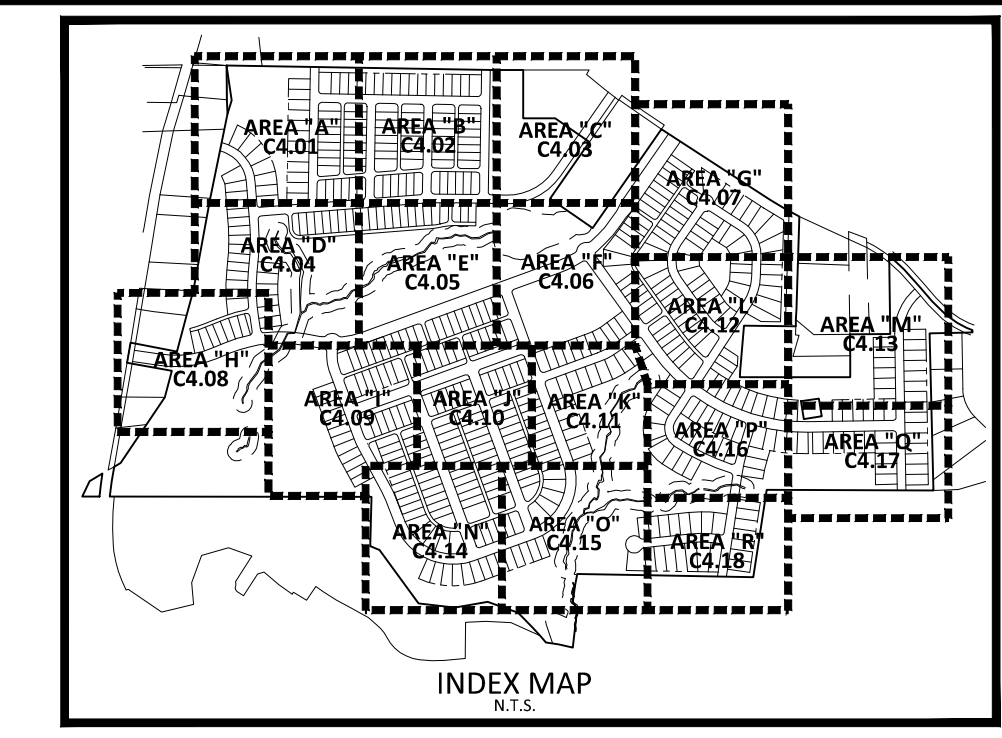
PLAN INFORMATION

PROJECT NO.	AGN23001
FILENAME	AGN23001-0AU1
CHECKED BY	
DRAWN BY	
SCALE	1"=200'
DATE	12.01.2023

SHEET

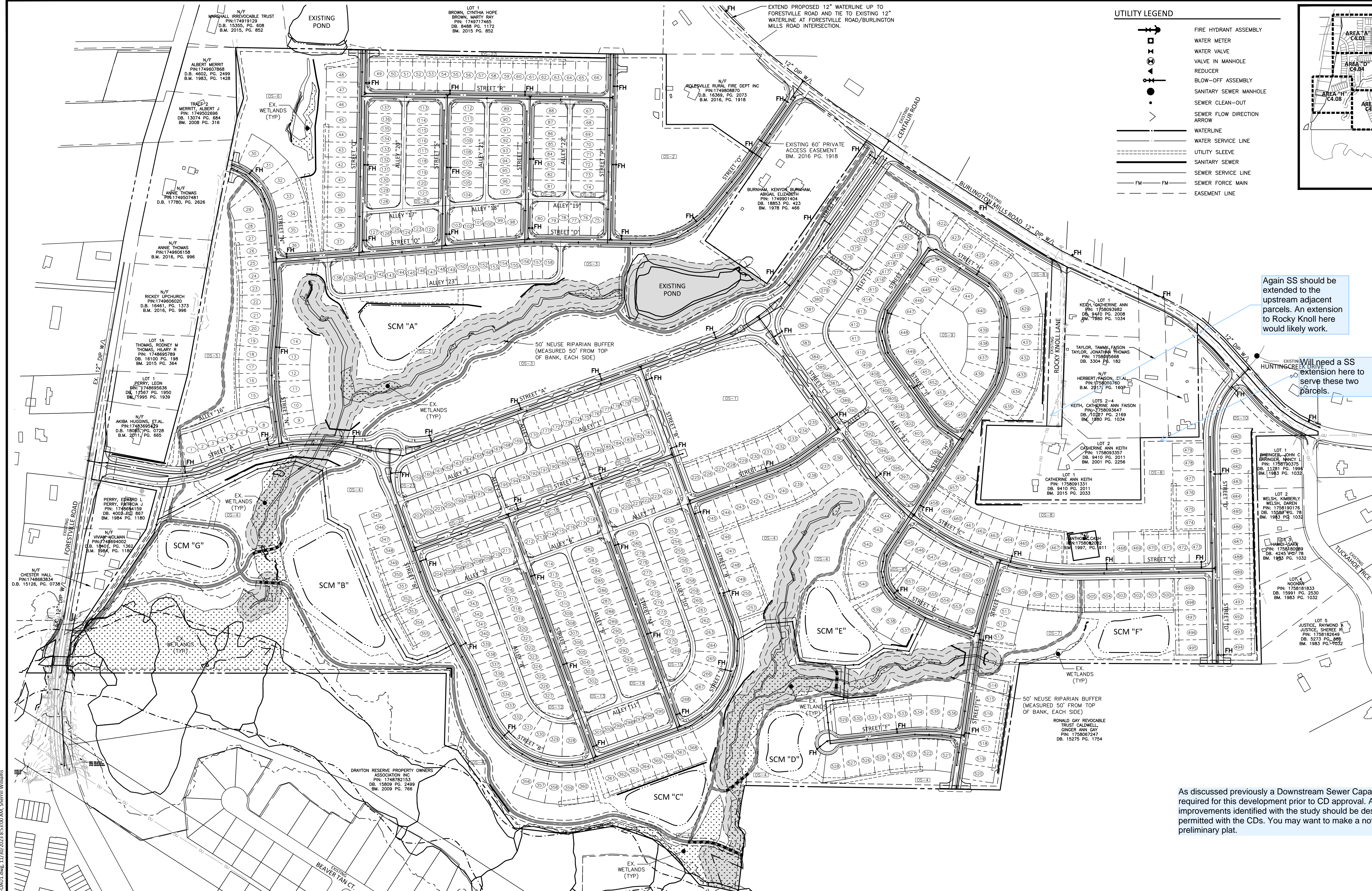
OVERALL
UTILITY PLAN

C4.00



UTILITY LEGEND

- FIRE HYDRANT ASSEMBLY
- WATER METER
- WATER VALVE
- VALVE IN MANHOLE
- REDUCER
- BLOW-OFF ASSEMBLY
- SEWER CLEAN-OUT
- SEWER FLOW DIRECTION ARROW
- WATERLINE
- WATER SERVICE LINE
- UTILITY SLEEVE
- SANITARY SEWER
- SEWER SERVICE LINE
- SEWER FORCE MAIN
- EASEMENT LINE



Again SS should be extended to the upstream adjacent parcels. An extension to Rocky Knoll here would likely work.

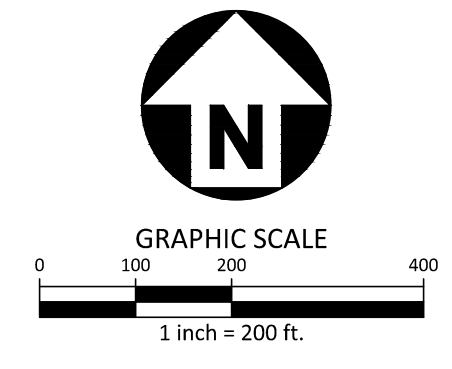
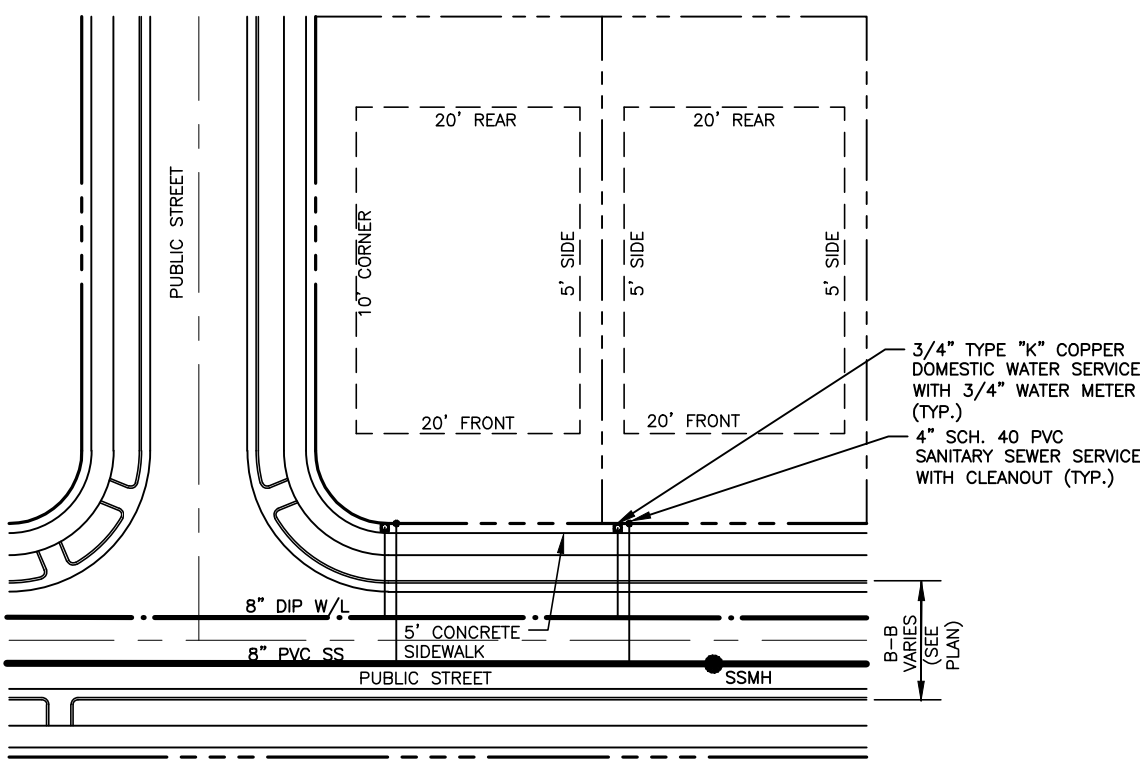
Will need a SS extension here to serve these two parcels.

As discussed previously a Downstream Sewer Capacity Analysis is required for this development prior to CD approval. Any necessary improvements identified with the study should be designed and permitted with the CDs. You may want to make a note for this on the preliminary plat.

CITY OF RALEIGH PUBLIC UTILITIES STANDARD UTILITY NOTES (AS APPLICABLE)

- ALL MATERIALS & CONSTRUCTION METHODS SHALL BE IN ACCORDANCE WITH CITY OF RALEIGH DESIGN STANDARDS, DETAILS & SPECIFICATIONS (REFERENCE: CORPUD HANDBOOK, CURRENT EDITION).
- UTILITY SEPARATION REQUIREMENTS:
 - A DISTANCE OF 100' SHALL BE MAINTAINED BETWEEN SANITARY SEWER & ANY PRIVATE OR PUBLIC WATER SUPPLY SOURCE SUCH AS AN IMPOUNDED RESERVOIR USED AS A SOURCE OF DRINKING WATER. IF ADEQUATE LATERAL SEPARATION CANNOT BE ACHIEVED, FERRULED SANITARY SEWER PIPE SHALL BE SPECIFIED & INSTALLED TO WATERLINE SPECIFICATIONS, HOWEVER, THE MINIMUM SEPARATION SHALL NOT BE LESS THAN 25' FROM A PRIVATE WELL OR 50' FROM A PUBLIC WELL.
 - WHEN INSTALLING WATER &/OR SEWER MAINS, THE HORIZONTAL SEPARATION BETWEEN UTILITIES SHALL BE 30'. IF THIS SEPARATION CANNOT BE MAINTAINED DUE TO EXISTING CONDITIONS, THE VARIATION ALLOWED IS THE WATER MAIN IN A SEPARATE TRENCH WITH THE ELEVATION OF THE WATER MAIN AT LEAST 18" ABOVE THE TOP OF THE SEWER & MUST BE APPROVED BY THE PUBLIC UTILITIES DEPARTMENT. ALL DISTANCES ARE MEASURED FROM OUTSIDE DIAMETER TO OUTSIDE DIAMETER.
 - WHERE IT IS IMPOSSIBLE TO OBTAIN PROPER SEPARATION, OR ANYTIME A SANITARY SEWER PASSES OVER A WATERMAIN, DIP MATERIALS OR STEEL ENCASUREMENT EXTENDED 10' ON EACH SIDE OF CROSSING MUST BE SPECIFIED & INSTALLED TO WATERLINE SPECIFICATIONS.
 - 5.0' MINIMUM HORIZONTAL SEPARATION IS REQUIRED BETWEEN ALL SANITARY SEWER & STORM SEWER FACILITIES, UNLESS DIP MATERIAL IS SPECIFIED FOR SANITARY SEWER.
 - MAINTAIN 18" MIN. VERTICAL SEPARATION AT ALL WATERMAIN & RCP STORM DRAIN CROSSINGS; MAINTAIN 18" MIN. VERTICAL SEPARATION AT ALL SANITARY SEWER & RCP STORM DRAIN CROSSINGS, WHERE ADEQUATE SEPARATIONS CANNOT BE ACHIEVED, SPECIFY DIP MATERIALS & A CONCRETE CRADLE HAVING 6" MIN. CLEARANCE (PER CORPUD DETAILS W-41 & S-49).
 - ALL OTHER UNDERGROUND UTILITIES SHALL CROSS WATER & SEWER FACILITIES WITH 18" MIN. VERTICAL SEPARATION REQUIRED.
- ANY NECESSARY FIELD REVISIONS ARE SUBJECT TO REVIEW & APPROVAL OF AN AMENDED PLAN &/OR PROFILE BY THE CITY OF RALEIGH PUBLIC UTILITIES DEPARTMENT PRIOR TO CONSTRUCTION.
- DEVELOPER SHALL PROVIDE 30 DAYS ADVANCE WRITTEN NOTICE TO OWNER FOR ANY WORK REQUIRED WITHIN AN EXISTING CITY OF RALEIGH UTILITY EASEMENT TRAVELING PRIVATE PROPERTY.
- CONTRACTOR SHALL MAINTAIN CONTINUOUS WATER & SEWER SERVICE TO EXISTING RESIDENCES & BUSINESSES THROUGHOUT CONSTRUCTION OF PROJECT. ANY NECESSARY SERVICE INTERRUPTIONS SHALL BE PRECEDED BY A 24 HOUR ADVANCE NOTICE TO THE CITY OF RALEIGH PUBLIC UTILITIES DEPARTMENT.

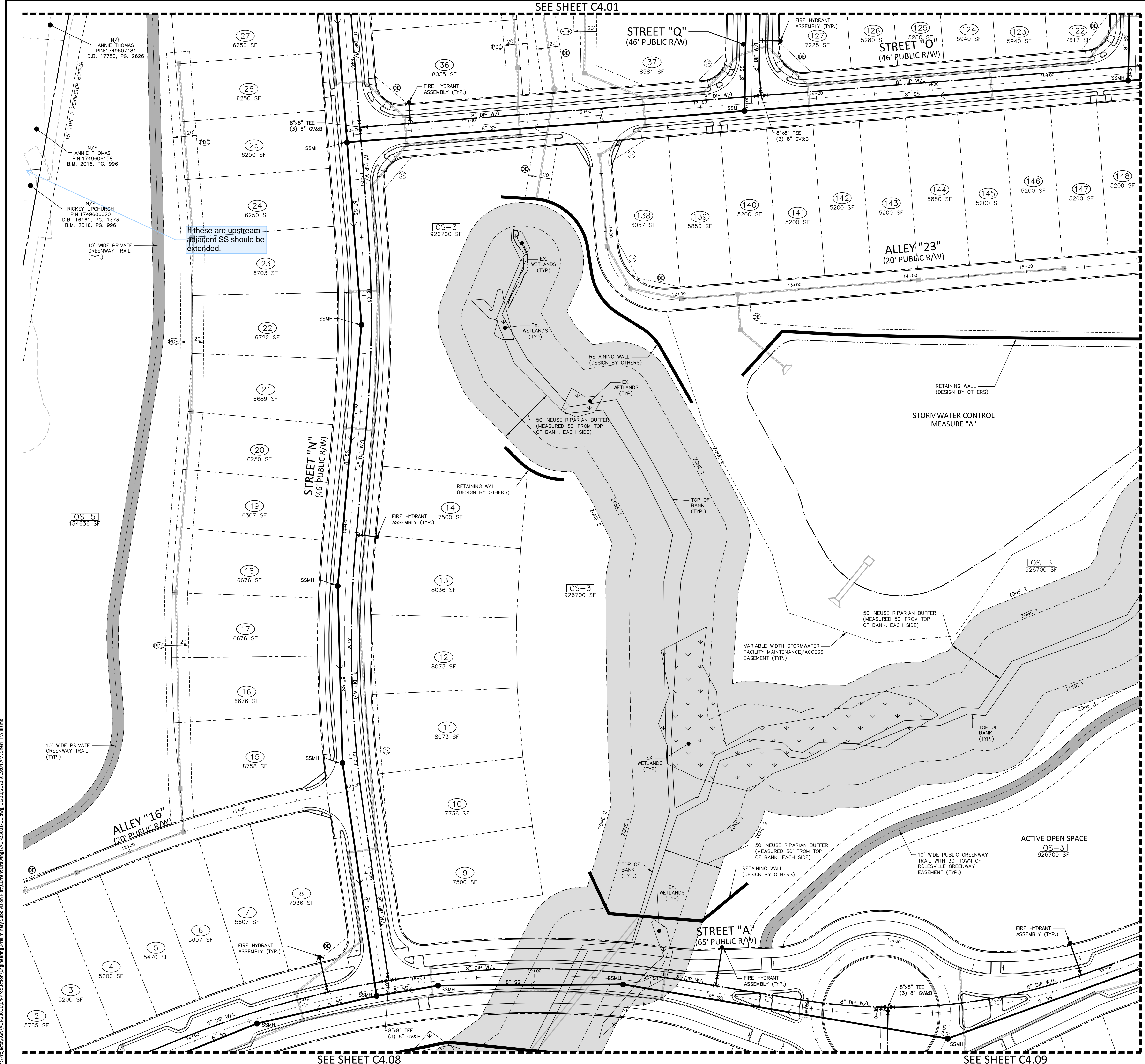
- 3.0' MINIMUM COVER IS REQUIRED ON ALL WATER MAINS & SEWER FORCEMAINS. 4.0' MINIMUM COVER IS REQUIRED ON ALL REUSE MAINS.
- IT IS THE DEVELOPER'S RESPONSIBILITY TO ABANDON OR REMOVE EXISTING WATER & SEWER SERVICES NOT BEING USED IN REDEVELOPMENT OF A SITE UNLESS OTHERWISE DIRECTED BY THE CITY OF RALEIGH PUBLIC UTILITIES DEPARTMENT. THIS INCLUDES ABANDONING TAP AT MAIN & REMOVAL OF SERVICE FROM ROW OR EASEMENT PER CORPUD HANDBOOK PROCEDURE.
- INSTALL 3/4" COPPER WATER SERVICES WITH METERS LOCATED AT ROW OR WITHIN A 2' X 2' WATERLINE EASEMENT IMMEDIATELY ADJACENT. NOTE: IT IS THE APPLICANT'S RESPONSIBILITY TO PROPERLY SIZE THE WATER SERVICE FOR EACH CONNECTION TO PROVIDE ADEQUATE FLOW & PRESSURE.
- INSTALL 4" PVC SEWER SERVICES @ 1.0% MINIMUM GRADE WITH CLEANOUTS LOCATED AT ROW OR EASEMENT LINE & SPACED EVERY 75 LINEAR FEET MAXIMUM.
- PRESSURE REDUCING VALVES ARE REQUIRED ON ALL WATER SERVICES EXCEEDING 80 PSI; BACKWATER VALVES ARE REQUIRED ON ALL SANITARY SEWER SERVICES HAVING BUILDING DRAINS LOWER THAN 1.0' ABOVE THE NEXT UPSTREAM MANHOLE.
- ALL ENVIRONMENTAL PERMITS APPLICABLE TO THE PROJECT MUST BE OBTAINED FROM NCDOW, USACE &/OR FEM FOR ANY RIPARIAN BUFFER, WETLAND &/OR FLOODPLAIN IMPACTS (RESPECTIVELY) PRIOR TO CONSTRUCTION.
- NCDOT / RAILROAD ENCROACHMENT AGREEMENTS ARE REQUIRED FOR ANY UTILITY WORK (INCLUDING MAIN EXTENSIONS & SERVICE TAPS) WITHIN STATE OR RAILROAD ROW PRIOR TO CONSTRUCTION.
- GREASE INTERCEPTOR / OIL WATER SEPARATOR SIZING CALCULATIONS & INSTALLATION SPECIFICATIONS SHALL BE APPROVED BY THE RW FOG PROGRAM COORDINATOR PRIOR TO ISSUANCE OF A U/C / BLDG PERMIT. CONTACT (919) 996-4516 OR FOG@RALEIGH.GOV FOR MORE INFORMATION.
- CROSS-CONNECTION CONTROL PROTECTION DEVICES ARE REQUIRED BASED ON DEGREE OF HEALTH HAZARD INVOLVED AS LISTED IN APPENDIX B OF THE RULES GOVERNING PUBLIC WATER SYSTEMS IN NORTH CAROLINA. THESE GUIDELINES ARE THE MINIMUM REQUIREMENTS. THE DEVICES SHALL MEET AMERICAN SOCIETY OF SANITARY ENGINEERING (ASSE) STANDARDS OR BE ON THE UNIVERSITY OF SOUTHERN CALIFORNIA APPROVAL LIST. THE DEVICES SHALL BE INSTALLED AND TESTED (BOTH INITIAL AND PERIODIC TESTING THEREAFTER) IN ACCORDANCE WITH THE MANUFACTURER'S RECOMMENDATIONS OR THE LOCAL CROSS-CONNECTION CONTROL PROGRAM, WHICHEVER IS MORE STRINGENT. A CERTIFICATE OF COMPLIANCE SHALL ALSO BE OBTAINED FROM THE RW CROSS-CONNECTION COORDINATOR FOR EACH DEVICE PRIOR TO ISSUANCE OF A U/C / BLDG PERMIT. CONTACT (919) 996-5923 OR CROSS.CONNECTION@RALEIGH.GOV FOR MORE INFORMATION.
- NOTICE FOR PROJECTS WITH REPLACED OR OVERSIZED MAINS: IF THE CITY'S REIMBURSEMENT FOR AN OVERSIZED MAIN OR URBAN MAIN REPLACEMENT PROJECT IS \$250,000 OR GREATER - THE PROJECT MUST BE PUBLICLY BID



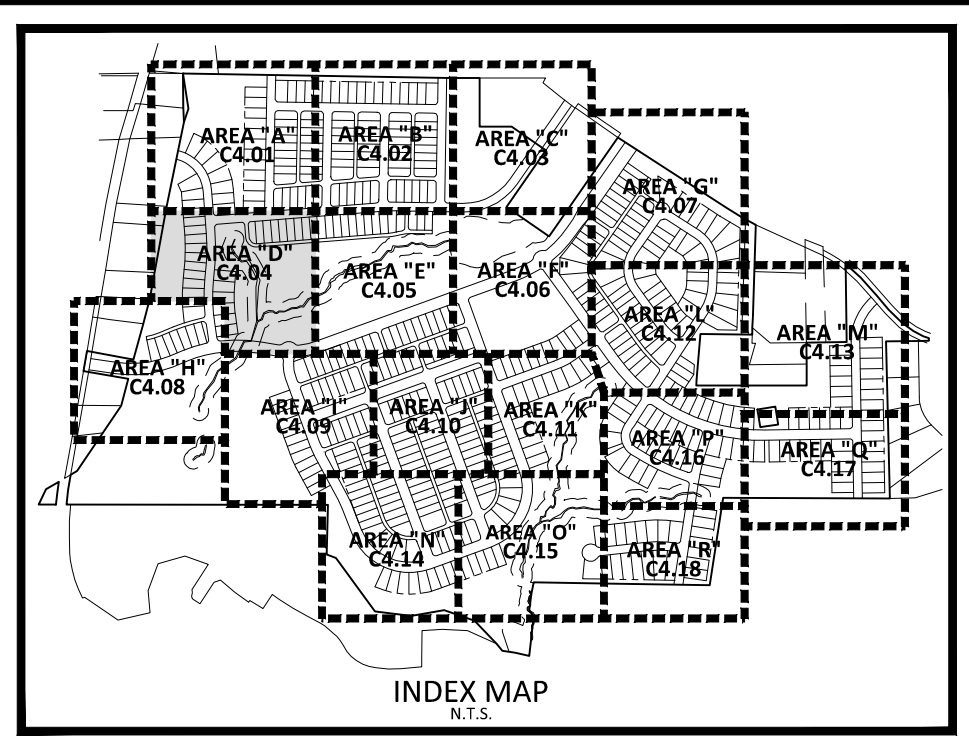
PRELIMINARY DRAWING - NOT RELEASED FOR CONSTRUCTION

M:\Projects\AGN\AGN23001\04-Production\Engineering\Preliminary Subdivision\Drawings\AGN23001-0AU1.dwg, 11/30/2023 8:52:35 AM, Williams, 1:1

SEE SHEET C4.01



If these are upstream adjacent SS should be extended.



UTILITY LEGEND

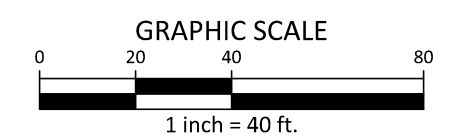
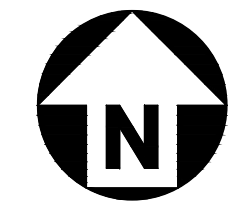
- FIRE HYDRANT ASSEMBLY
- WATER METER
- WATER VALVE
- VALVE IN MANHOLE
- REDUCER
- BLOW-OFF ASSEMBLY
- SANITARY SEWER MANHOLE
- SEWER CLEAN-OUT
- SEWER FLOW DIRECTION ARROW
- WATERLINE
- WATER SERVICE LINE
- UTILITY SLEEVE
- SANITARY SEWER
- SEWER SERVICE LINE
- SEWER FORCE MAIN
- EASEMENT LINE

SEE SHEET C4.05

SEE SHEET C4.08

SEE SHEET C4.09

SEE SHEET C0.01 FOR ALL PROJECT, SITE, GRADING, STORM DRAINAGE AND UTILITY NOTES



PRELIMINARY DRAWING - NOT RELEASED FOR CONSTRUCTION

McADAMS
The John R. McAdams Company, Inc.
2905 Meridian Parkway
Durham, NC 27713
phone 919. 361. 5000
fax 919. 361. 2269
license number: C-0293, C-187
www.mcadamsco.com

CLIENT
ALLIANCE GROUP OF NC, LLC
7208 FALLS OF NEUSE RD, SUITE 101
RALEIGH, NORTH CAROLINA 27615
CONTACT: JACOB ANDERSON
PHONE: 919. 239. 9486



PEARCE FARM
PRELIMINARY PLAT PLANS
BURLINGTON MILLS ROAD
TOWN OF ROLESVILLE, WAKE FOREST TOWNSHIP,
WAKE COUNTY, NORTH CAROLINA

PSP-YR-XX



REVISIONS

NO.	DATE

PLAN INFORMATION

PROJECT NO.	AGN23001
FILENAME	AGN23001-U1
CHECKED BY	
DRAWN BY	
SCALE	1"=40'
DATE	12.01.2023

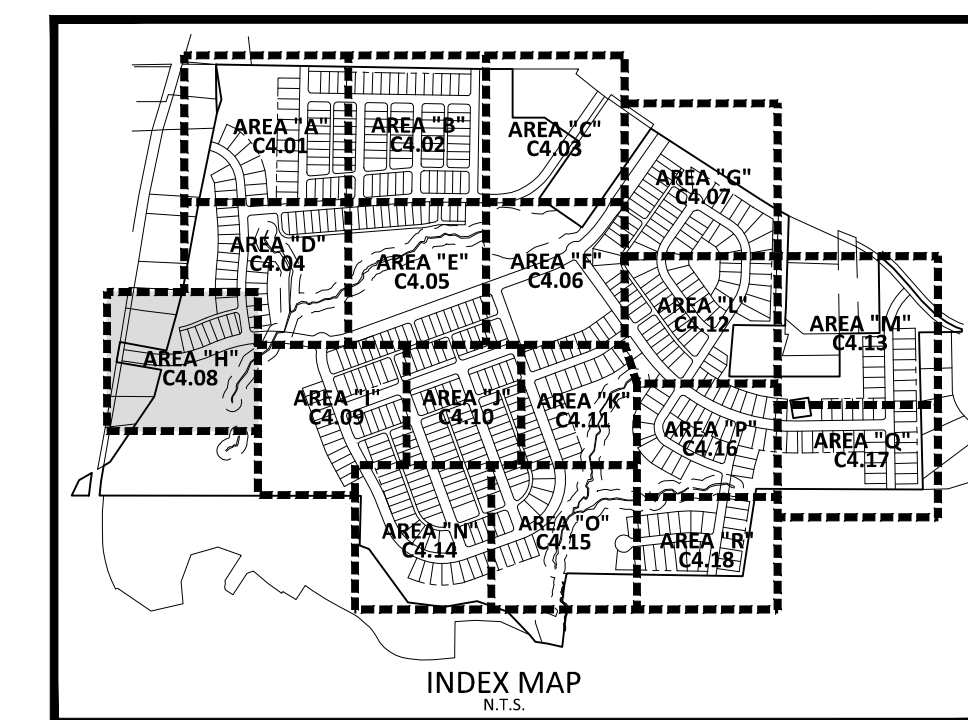
SHEET

UTILITY PLAN
AREA "D"
C4.04

M:\Projects\AGN\AGN23001\04-Production\Engineering\Preliminary Subdivision Plat\Current Drawings\AGN23001-U1.dwg, 11/30/2023 9:16:59 AM, Williams, 1:1

M:\Projects\AGN\AGN23001\04-Production\Engineering\Preliminary Subdivision Plat\Current Drawings\AGN23001-U1.dwg, 11/30/2023 9:19:04 AM, Sherill Williams

SEE SHEET C4.04



McADAMS
 The John R. McAdams Company, Inc.
 2905 Meridian Parkway
 Durham, NC 27713
 phone 919. 361. 5000
 fax 919. 361. 2269
 license number: C-0293, C-187
 www.mcadamsco.com

CLIENT
 ALLIANCE GROUP OF NC, LLC
 7208 FALLS OF NEUSE RD, SUITE 101
 RALEIGH, NORTH CAROLINA 27615
 CONTACT: JACOB ANDERSON
 PHONE: 919. 239. 9486



PEARCE FARM
 PRELIMINARY PLAT PLANS
 BURLINGTON MILLS ROAD
 TOWN OF ROLESVILLE, WAKE FOREST TOWNSHIP,
 WAKE COUNTY, NORTH CAROLINA



REVISIONS
 NO. DATE

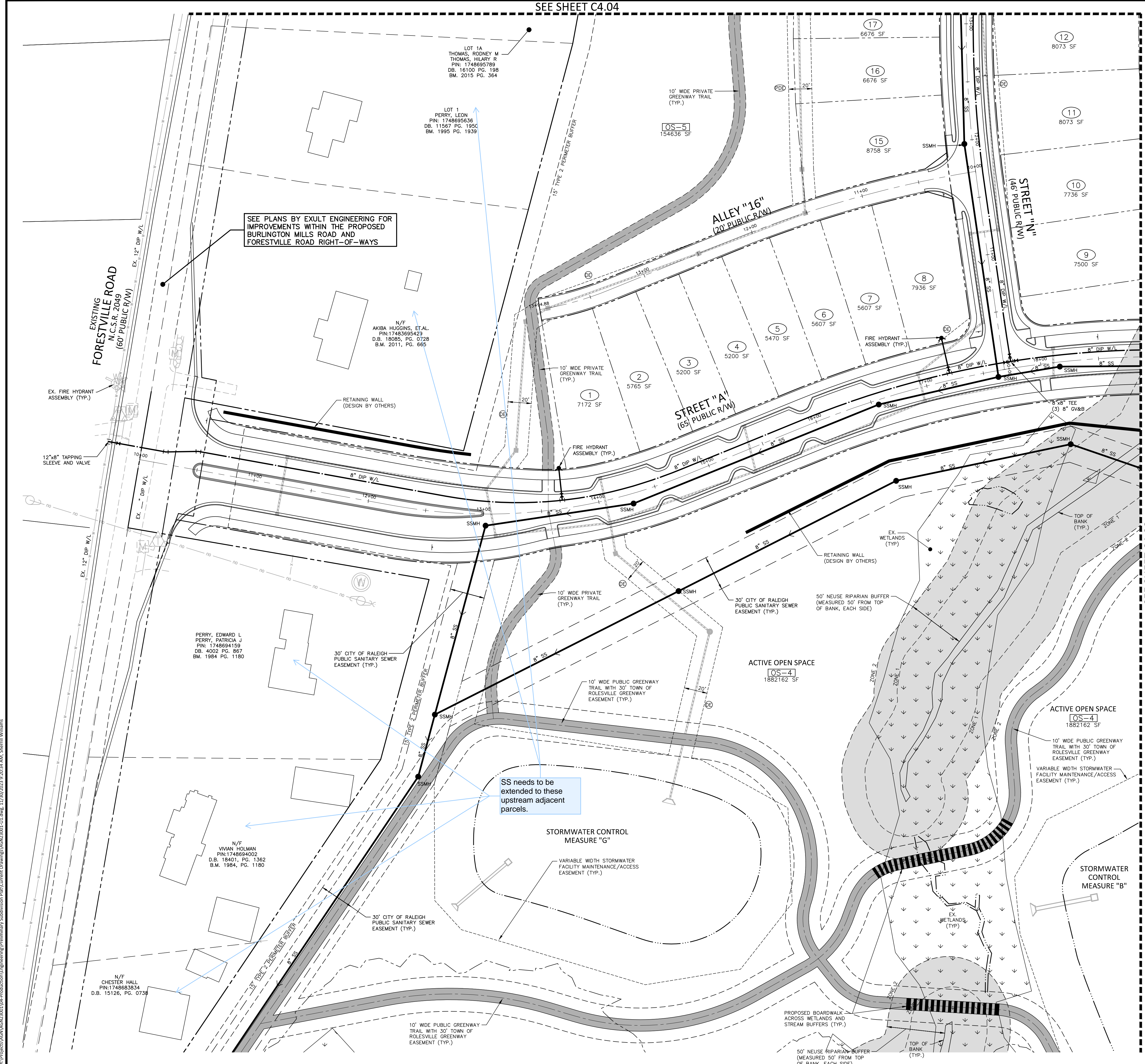
PLAN INFORMATION
 PROJECT NO. AGN23001
 FILENAME AGN23001-U1
 CHECKED BY .
 DRAWN BY .
 SCALE 1"=40'
 DATE 12. 01. 2023

UTILITY PLAN
 AREA "H"
C4.08

UTILITY LEGEND

	FIRE HYDRANT ASSEMBLY
	WATER METER
	WATER VALVE
	VALVE IN MANHOLE
	REDUCER
	BLOW-OFF ASSEMBLY
	SANITARY SEWER MANHOLE
	SEWER CLEAN-OUT
	SEWER FLOW DIRECTION ARROW
	WATERLINE
	WATER SERVICE LINE
	UTILITY SLEEVE
	SANITARY SEWER
	SEWER SERVICE LINE
	SEWER FORCE MAIN
	EASEMENT LINE

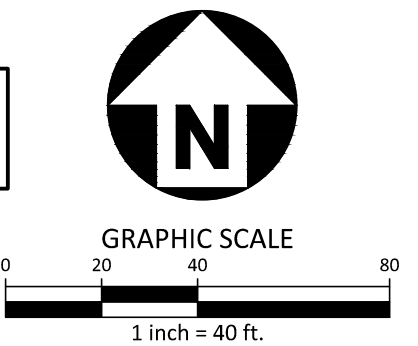
SEE SHEET C4.09



SEE PLANS BY EXULT ENGINEERING FOR IMPROVEMENTS WITHIN THE PROPOSED BURLINGTON MILLS ROAD AND FORESTVILLE ROAD RIGHT-OF-WAYS

SS needs to be extended to these upstream adjacent parcels.

SEE SHEET C0.01 FOR ALL PROJECT, SITE, GRADING, STORM DRAINAGE AND UTILITY NOTES



PRELIMINARY DRAWING - NOT RELEASED FOR CONSTRUCTION

M:\Projects\AGN23001\04-Production\Engineering\Preliminary Subdivision Plat\Current Drawings\AGN23001-U1.dwg, 11/20/2023 9:29:29 AM, Williams, 1:1

M:\Projects\AGN23001\04-Production\Engineering\Preliminary Subdivision Plat\Current Drawings\AGN23001-U1.dwg, 11/20/2023 9:29:34 AM, Sherill Williams