

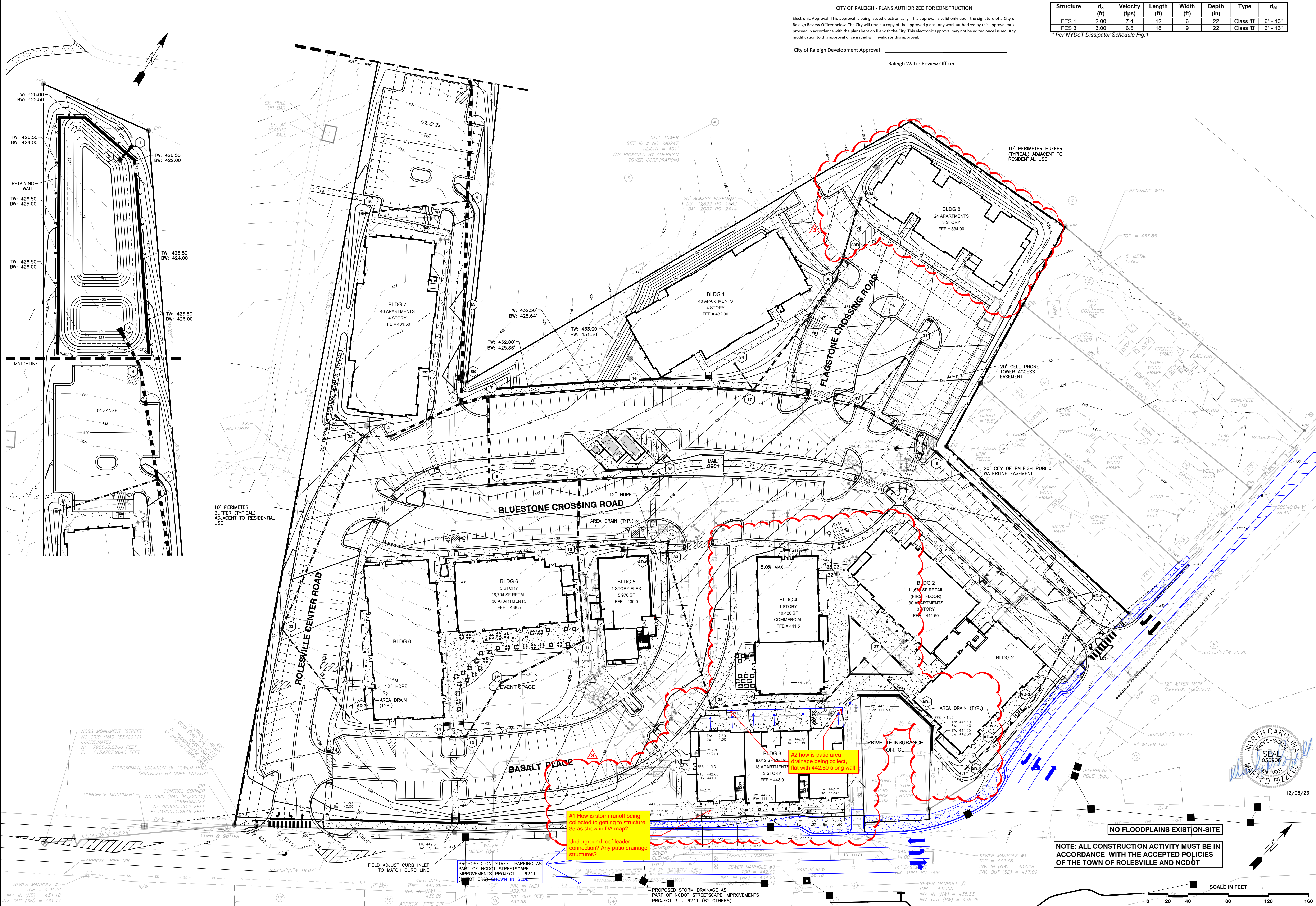
CITY OF RALEIGH - PLANS AUTHORIZED FOR CONSTRUCTION

Electronic Approval: This approval is being issued electronically. This approval is valid only upon the signature of a City of Raleigh Review Officer below. The City will retain a copy of the approved plans. Any work authorized by this approval must proceed in accordance with the plans kept on file with the City. This electronic approval may not be edited once issued. Any modification to this approval once issued will invalidate this approval.

City of Raleigh Development Approval \_\_\_\_\_  
Raleigh Water Review Officer \_\_\_\_\_

Structure	d <sub>1</sub> (ft)	Velocity (fps)	Length (ft)	Width (ft)	Depth (in)	Type	d <sub>50</sub>
FES 1	2.00	7.4	12	6	22	Class 'B'	6" - 13"
FES 3	3.00	6.5	18	9	22	Class 'B'	6" - 13"

\* Per NYDOT Dissipator Schedule Fig.1



**BASS, NIXON & KENNEDY, INC.**  
**CONSULTING ENGINEERS**  
 6310 CHAPEL HILL ROAD, SUITE 250, RALEIGH, NC 27607  
 TELEPHONE: (919)881-4422 FAX: (919)881-6868  
 CERTIFICATION NUMBERS: NCBELS (C-0110); NCBOLA (C-0267)

NO.	DATE	DESCRIPTION	BY
1	09-21-23	CHANGES FROM 06-02-22 CDS	MRM
2	10-16-23	T.O.R. COMMENTS	MRM
3	12-06-23	TOWN OF ROLESVILLE COMMENTS	MRM

GRADING PLAN  
 SCALE: 1" = 40'  
 CHK BY: MDB

**COBBLESTONE VILLAGE**  
**MIXED USE DEVELOPMENT**  
 TOWN OF ROLESVILLE, WAKE COUNTY, NORTH CAROLINA  
 SHEET C3.1  
 NOT RELEASED FOR CONSTRUCTION OR BID SOLICITATION



12/08/23