

- SITE LAYOUT NOTES**
- ALL CONSTRUCTION SHALL COMPLY WITH ALL APPLICABLE ROLESVILLE, WAKE COUNTY, NCDOT AND OSHA STANDARDS AND SPECIFICATIONS.
 - ALL DIMENSIONS ARE TO FACE OF CURB, EDGE OF PAVEMENT, BUILDING WALL FACE OR PROPERTY LINE, UNLESS OTHERWISE NOTED.
 - ALL RADII ARE DIMENSIONED FROM BACK OF CURB, IF NOT STATED, RADII DIMENSION IS 5'.
 - CONTRACTOR SHALL FIELD VERIFY ALL DIMENSIONS, UTILITIES AND GRADES PRIOR TO CONSTRUCTION. NOTIFY ENGINEER OF ANY DISCREPANCIES PRIOR TO COMMENCING ANY RELATED CONSTRUCTION.
 - THE CONTRACTOR SHALL BE RESPONSIBLE FOR OFF-SITE DISPOSAL OF ALL WASTE MATERIALS GENERATED DURING CONSTRUCTION AND FOR OBTAINING ALL APPLICABLE PERMITS FOR OFF-SITE STOCKPILES AND/OR WASTE AREAS.
 - CONTRACTOR IS RESPONSIBLE FOR ANY DAMAGES DURING CONSTRUCTION AND SHALL MAKE REPAIRS AT NO EXPENSE TO THE OWNER.
 - AT LEAST 72 HOURS PRIOR TO CONSTRUCTION OR EXCAVATION THE CONTRACTOR SHALL NOTIFY "NORTH CAROLINA ONE CALL" (811) OR (1-800-692-4949) TO HAVE EXISTING UTILITIES LOCATED. ALL PRIVATE UTILITIES SHALL BE LOCATED AS NEEDED BY A PRIVATE UTILITY LOCATE COMPANY EMPLOYED BY THE CONTRACTOR.
 - ALL CURB AND GUTTER OFFSITE SHALL BE 30" WIDE UNLESS NOTED OTHERWISE.
 - ALL DISTURBED CURB & GUTTER AND ASPHALT SHALL BE REPLACED PER PROJECT DETAILS AND NCDOT STANDARDS AND SPECIFICATIONS.
 - RAISE ALL STRUCTURES AT NO ADDITIONAL COST TO THE OWNER SO THAT THE TOP OF THE STRUCTURE EQUALS THE FINISH GRADE OF THE NEW ASPHALT.
 - COORDINATE THE PROJECT SCHEDULE WITH THE CIVIL ENGINEER AND OWNER IN ACCORDANCE WITH THE OWNER'S ONGOING ONSITE OPERATIONS. ANY UTILITY INTERRUPTIONS SHALL BE COORDINATED WITH THE OWNER AT LEAST 72 HOURS PRIOR TO THE INTERRUPTION.
 - PROVIDE A SMOOTH TRANSITION BETWEEN NEW ASPHALT AND EXISTING ASPHALT SURFACES.
 - ALL SIDEWALKS ARE TO HAVE NO MORE THAN A 1:20 (5.0%) SLOPE FOR THE LENGTH OF THE SIDEWALK AND NO MORE THAN A 1:50 (2.0%) SLOPE FOR THE WIDTH OF THE SIDEWALK. NOTIFY ENGINEER IF THIS CANNOT BE ACHIEVED.

- KEY NOTES**
- | | |
|-----------|----------------------------------|
| 1
C6.0 | ACCESSIBLE CURB RAMP |
| 2
C6.0 | STANDARD DUTY CONCRETE PAVEMENT |
| 3
C6.0 | HEAVY DUTY ASPHALT PAVEMENT |
| 4
C6.0 | STANDARD DUTY ASPHALT PAVEMENT |
| 5
C6.0 | NCDOT ASPHALT PAVEMENT |
| 6
C6.0 | NCDOT 30" CONCRETE CURB & GUTTER |
| 7
C6.0 | CURB ENDING TAPER |
| 1
C6.1 | 8-FT ORNAMENTAL FENCE |
| 2
C6.1 | 8' TALL ORNAMENTAL GATES |
| 4
C6.2 | RETAINING WALL |
| 5
C6.2 | BOLLARD TYP. |
| 6
C6.2 | 24" CONCRETE CURB & GUTTER |
| A
C6.2 | KNOX BOX |
| B
C6.2 | ROLLOUT TRASH & RECYCLING BINS |
- TRAFFIC CONTROL NOTES**
- ALL SITE SIGNAGE SHALL BE IN ACCORDANCE WITH THE MANUAL ON UNIFORM TRAFFIC CONTROL DEVICES (MUTCD) AND NCDOT STANDARDS.
 - ALL PAVEMENT MARKINGS SHALL BE THERMOPLASTIC.
 - ALL PAVEMENT MARKINGS SHALL BE IN ACCORDANCE WITH NCDOT STANDARDS AND THE PROJECT SPECIFICATIONS, WHICHEVER IS MORE STRINGENT.
 - ALL SIGNAGE SHALL HAVE HIGH INTENSITY PRISMATIC SHEETING.
 - SIGNS SHALL BE FABRICATED FROM ALUMINUM ALLOY SHEETS.
 - ALL MOUNTING HARDWARE SHALL BE GALVANIZED.
 - "VAPS" ON PLANS DENOTES VAN ACCESSIBLE PARKING SIGN. INSTALL R7-8A, R7-8D, & R7-8P.
 - "APS" ON PLANS DENOTES ACCESSIBLE PARKING SIGN. INSTALL R7-8A & R7-8D ONLY.
- STRIPING KEY NOTES**
- | | NCDOT STD. | WIDTH | COLOR |
|-----------|----------------------------------|---------------|------------|
| 1
C6.2 | PARKING STALL AND TRAFFIC STRIPE | 1205.07 (STD) | 4-IN WHITE |
| 7
C6.2 | ACCESSIBLE PARKING LAYOUT | | |
| C
C6.2 | STOP BAR | 24-IN | WHITE |
- SIGNAGE KEY NOTES**
- | | MUTCD |
|-----------|---|
| 2
C6.2 | STOP SIGN (R1-1 (PER PLAN & DETAIL)) |
| 3
C6.2 | VAN ACCESSIBLE PARKING SIGN (R7-8P, R7-8A, R7-8D (PER PLAN & DETAIL)) |
| D
C6.2 | GROUND SIGN (REQUIRES SEPARATE PLANS) |

PRELIMINARY PLANS
FOR REVIEW ONLY

DO NOT USE FOR CONSTRUCTION

THIS DRAWING PREPARED AT THE
RALEIGH OFFICE
5410 Trinity Road, Suite 102 | Raleigh, NC 27607
TEL 919.866.1951 FAX 919.833.8174 www.timmons.com

YOUR VISION. ACHIEVED THROUGH OURS.

DATE
06/07/2023

DATE
06/01/2023

DRAWN BY
J. HAYES

DESIGNED BY
G. FRANK

CHECKED BY
G. FRANK

SCALE
AS SHOWN

TIMMONS GROUP

NORTH CAROLINA LICENSE NO. C-1652

JONES DAIRY STORAGE FACILITY

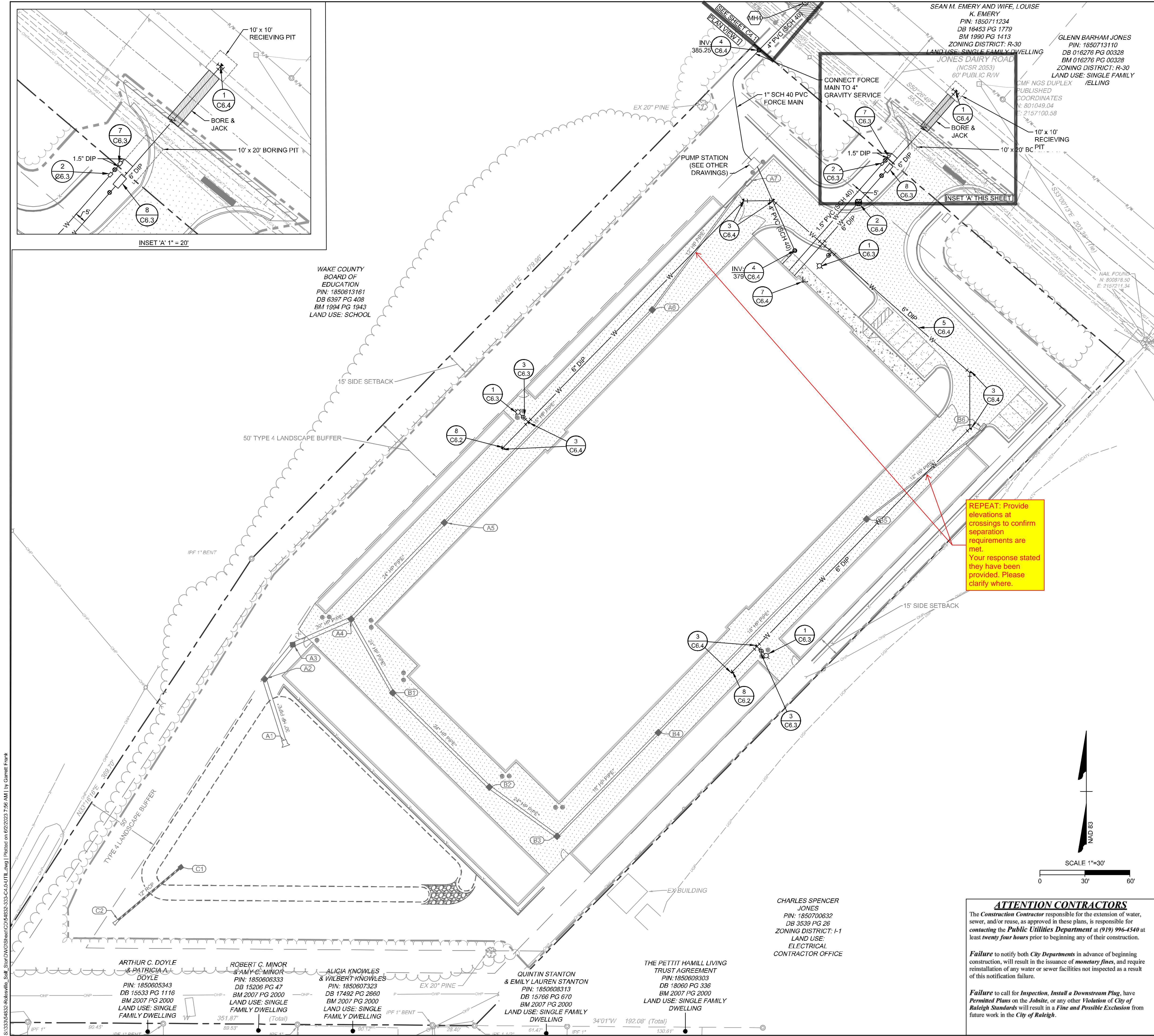
TOWN OF ROLESVILLE - WAKE COUNTY - NORTH CAROLINA

SITE PLAN

JOB NO.
54832

SHEET NO.
C2.0

S:\3334\832-Rolesville_Site_SitePlan\DWG\Sheet\CD\54832-C2.0-SITE.dwg [Plotted on 6/20/2023 7:45 AM] by Garret Frank



CITY OF RALEIGH UTILITY NOTES

ALL MATERIALS & CONSTRUCTION METHODS SHALL BE IN ACCORDANCE WITH CITY OF RALEIGH DESIGN STANDARDS, DETAILS & SPECIFICATIONS (REFERENCE: CORPUD HANDBOOK, CURRENT EDITION)

1. UTILITY SEPARATION REQUIREMENTS:

a) WHEN INSTALLING WATER &/OR SEWER MAINS, THE HORIZONTAL SEPARATION BETWEEN UTILITIES SHALL BE 10'. IF THIS SEPARATION CANNOT BE MAINTAINED DUE TO EXISTING CONDITIONS, THE VARIATION ALLOWED IS THE WATER MAIN IN A SEPARATE TRENCH WITH THE ELEVATION OF THE WATER MAIN AT LEAST 18" ABOVE THE TOP OF THE SEWER & MUST BE APPROVED BY THE PUBLIC UTILITIES DIRECTOR. ALL DISTANCES ARE MEASURED FROM OUTSIDE DIAMETER TO OUTSIDE DIAMETER

b) WHERE IT IS IMPOSSIBLE TO OBTAIN PROPER SEPARATION, OR ANYTIME A SANITARY SEWER PASSES OVER A WATERMAIN, DIP MATERIALS OR STEEL ENCASMENT EXTENDED 10' ON EACH SIDE OF CROSSING MUST BE SPECIFIED & INSTALLED TO WATERLINE SPECIFICATIONS

c) 5.0' MINIMUM HORIZONTAL SEPARATION IS REQUIRED BETWEEN ALL SANITARY SEWER & STORM SEWER FACILITIES, UNLESS DIP MATERIAL IS SPECIFIED FOR SANITARY SEWER

d) MAINTAIN 18" MIN. VERTICAL SEPARATION AT ALL WATERMAIN & RCP STORM DRAIN CROSSINGS; MAINTAIN 24" MIN. VERTICAL SEPARATION AT ALL SANITARY SEWER & RCP STORM DRAIN CROSSINGS. WHERE ADEQUATE SEPARATIONS CANNOT BE ACHIEVED, SPECIFY DIP MATERIALS & A CONCRETE CRADLE HAVING 6" MIN. CLEARANCE (PER CORPUD DETAILS W-41 & S-49)

e) ALL OTHER UNDERGROUND UTILITIES SHALL CROSS WATER & SEWER FACILITIES WITH 18" MIN. VERTICAL SEPARATION REQUIRED

3. ANY NECESSARY FIELD REVISIONS ARE SUBJECT TO REVIEW & APPROVAL OF AN AMENDED PLAN &/OR PROFILE BY THE CITY OF RALEIGH PUBLIC UTILITIES DEPARTMENT PRIOR TO CONSTRUCTION

4. CONTRACTOR SHALL MAINTAIN CONTINUOUS WATER & SEWER SERVICE TO EXISTING RESIDENCES & BUSINESSES THROUGHOUT CONSTRUCTION OF PROJECT. ANY NECESSARY SERVICE INTERRUPTIONS SHALL BE PRECEDED BY A 24 HOUR ADVANCE NOTICE TO THE CITY OF RALEIGH PUBLIC UTILITIES DEPARTMENT

5. 3.0' MINIMUM COVER IS REQUIRED ON ALL WATER MAINS & SEWER FORCEMAINS. 4.0' MINIMUM COVER IS REQUIRED ON ALL REUSE MAINS

6. INSTALL 4" PVC SEWER SERVICES @ 1.0% MINIMUM GRADE WITH CLEANOUTS LOCATED AT ROW OR EASEMENT LINE & SPACED EVERY 75 LINEAR FEET MAXIMUM

7. PRESSURE REDUCING VALVES ARE REQUIRED ON ALL WATER SERVICES EXCEEDING 80 PSI. BACKWATER VALVES ARE REQUIRED ON ALL SANITARY SEWER SERVICES HAVING BUILDING DRAINS LOWER THAN 1.0' ABOVE THE NEXT UPSTREAM MANHOLE

8. NCDOT / RAILROAD ENCROACHMENT AGREEMENTS ARE REQUIRED FOR ANY UTILITY WORK (INCLUDING MAIN EXTENSIONS & SERVICE TAPS) WITHIN STATE OR RAILROAD ROW PRIOR TO CONSTRUCTION

9. GREASE INTERCEPTOR / OIL WATER SEPARATOR SIZING CALCULATIONS & INSTALLATION SPECIFICATIONS SHALL BE APPROVED BY THE CORPUD FOG PROGRAM COORDINATOR PRIOR TO ISSUANCE OF A BUILDING PERMIT. CONTACT TIM BEASLEY AT (919) 996-2334 OR TIMOTHY.BEASLEY@RALEIGHNC.GOV FOR MORE INFORMATION

10. CROSS-CONNECTION CONTROL PROTECTION DEVICES ARE REQUIRED BASED ON DEGREE OF HEALTH HAZARD INVOLVED AS LISTED IN APPENDIX-B OF THE RULES GOVERNING PUBLIC WATER SYSTEMS IN NORTH CAROLINA. THESE GUIDELINES ARE THE MINIMUM REQUIREMENTS. THE DEVICES SHALL MEET AMERICAN SOCIETY OF SANITARY ENGINEERING (ASSE) STANDARDS OR BE ON THE UNIVERSITY OF SOUTHERN CALIFORNIA APPROVAL LIST. THE DEVICES SHALL BE INSTALLED AND TESTED (BOTH INITIAL AND PERIODIC TESTING THEREAFTER) IN ACCORDANCE WITH THE MANUFACTURER'S RECOMMENDATIONS OR THE LOCAL CROSS-CONNECTION CONTROL PROGRAM, WHICHEVER IS MORE STRINGENT. CONTACT JOANIE HARTLEY AT (919) 996-5923 OR JOANIE.HARTLEY@RALEIGHNC.GOV FOR MORE INFORMATION

KEY NOTES			
<div>8</div> <div>C6.2</div>	FIRE LINE CAPPING	<div>8</div> <div>C6.3</div>	FIRE SERVICE BACKFLOW (6" RPDA)
<div>1</div> <div>C6.3</div>	FIRE HYDRANT ASSEMBLY	<div>1</div> <div>C6.4</div>	TAPPING SLEEVE w/ GATE VALVE
<div>2</div> <div>C6.3</div>	1.5" RPZ BACKFLOW PREVENTER (DOMESTIC SERVICE)	<div>2</div> <div>C6.4</div>	POST INDICATOR VALVE ASSEMBLY
<div>3</div> <div>C6.3</div>	GATE VALVE ASSEMBLY	<div>3</div> <div>C6.4</div>	THRUST BLOCKING (TYP.)
<div>4</div> <div>C6.3</div>	SANITARY SEWER MANHOLE	<div>4</div> <div>C6.4</div>	SANITARY CLEANOUT
<div>5</div> <div>C6.3</div>	SANITARY SEWER MANHOLE RING & COVER	<div>5</div> <div>C6.4</div>	UTILITY TRENCHING AND BACKFILL
<div>6</div> <div>C6.3</div>	SEWER MANHOLE STEPS	<div>6</div> <div>C6.4</div>	FIRE, DOMESTIC, & IRRIGATION WALL MOUNTED FIRE DEPARTMENT CONNECTION (STORZ)
<div>7</div> <div>C6.3</div>	1-1/2" WATER METER AND VAULT	<div>7</div> <div>C6.4</div>	

Public Sewer Collection / Extension System

The City of Raleigh consents to the connection and extension of the City's public sewer system as shown on this plan. The material and Construction methods used for this project shall conform to the standards and specifications of the City's Public Utilities Handbook.

City of Raleigh
Public Utilities Department Permit # _____
Authorization to Construct _____
Date _____

ATTENTION CONTRACTORS

The *Construction Contractor* responsible for the extension of water, sewer, and/or reuse, as approved in these plans, is responsible for contacting the **Public Utilities Department** at (919) 996-4540 at least **twenty four hours** prior to beginning any of their construction.

Failure to notify both *City Departments* in advance of beginning construction, will result in the issuance of **monetary fines**, and require reinstallation of any water or sewer facilities not inspected as a result of this notification failure.


Failure to call for *Inspection, Install a Downstream Plug, have Permitted Plans* on the *Jobsite*, or any other *Violation of City of Raleigh Standards* will result in a **Fine and Possible Exclusion** from future work in the *City of Raleigh*.

CITY OF RALEIGH - PLANS AUTHORIZED FOR CONSTRUCTION

ELECTRONIC APPROVAL: THIS APPROVAL IS BEING ISSUED ELECTRONICALLY. THIS APPROVAL IS VALID ONLY UPON THE SIGNATURE OF A CITY OF RALEIGH REVIEW OFFICER BELOW. THE CITY WILL RETAIN A COPY OF THE APPROVED PLANS. ANY WORK AUTHORIZED BY THIS APPROVAL MUST PROCEED IN ACCORDANCE WITH THE PLANS KEPT ON FILE WITH THE CITY. THIS ELECTRONIC APPROVAL MAY NOT BE EDITED ORCE ISSUED. ANY MODIFICATION TO THIS APPROVAL ONCE ISSUED WILL INVALIDATE THIS APPROVAL.

CITY OF RALEIGH DEVELOPMENT APPROVAL _____
RALEIGH WATER REVIEW OFFICER _____

PRELIMINARY PLANS
FOR REVIEW ONLY



DO NOT USE FOR CONSTRUCTION

THIS DRAWING PREPARED AT THE
RALEIGH OFFICE
5410 Trinity Road, Suite 102 | Raleigh, NC 27607
TEL 919.806.1951 FAX 919.833.8124 www.timmons.com

YOUR VISION. ACHIEVED THROUGH OURS.

DATE	REVISION	DESCRIPTION	ADDRESS	TOWN OF ROLESVILLE	COMMENTS
06/07/2023					

DATE: 06/01/2023
DRAWN BY: J. HAYES
DESIGNED BY: G. FRANK
CHECKED BY: G. FRANK
SCALE: AS SHOWN

TIMMONS GROUP

NORTH CAROLINA LICENSE NO. C-1652

JONES DAIRY STORAGE FACILITY

TOWN OF ROLESVILLE - WAKE COUNTY - NORTH CAROLINA

SITE UTILITY PLAN

JOB NO.
54832

SHEET NO.
C4.0

S:\333\4832-Rolesville_Site_StorDWG\SheetCD\54832-333-C4-UTL.dwg | Plotted on 06/20/2023 7:56 AM | By Garrett Frank