

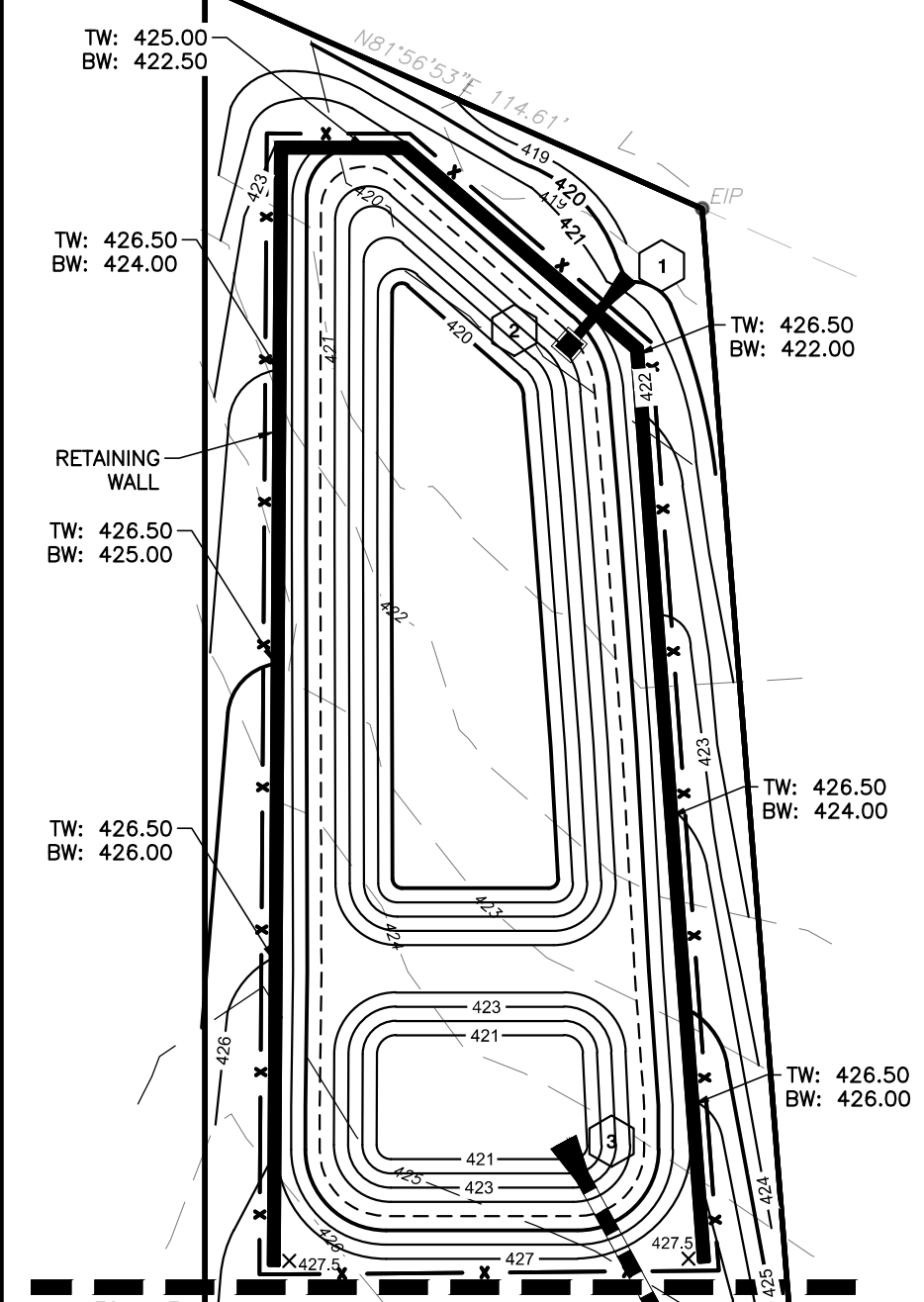
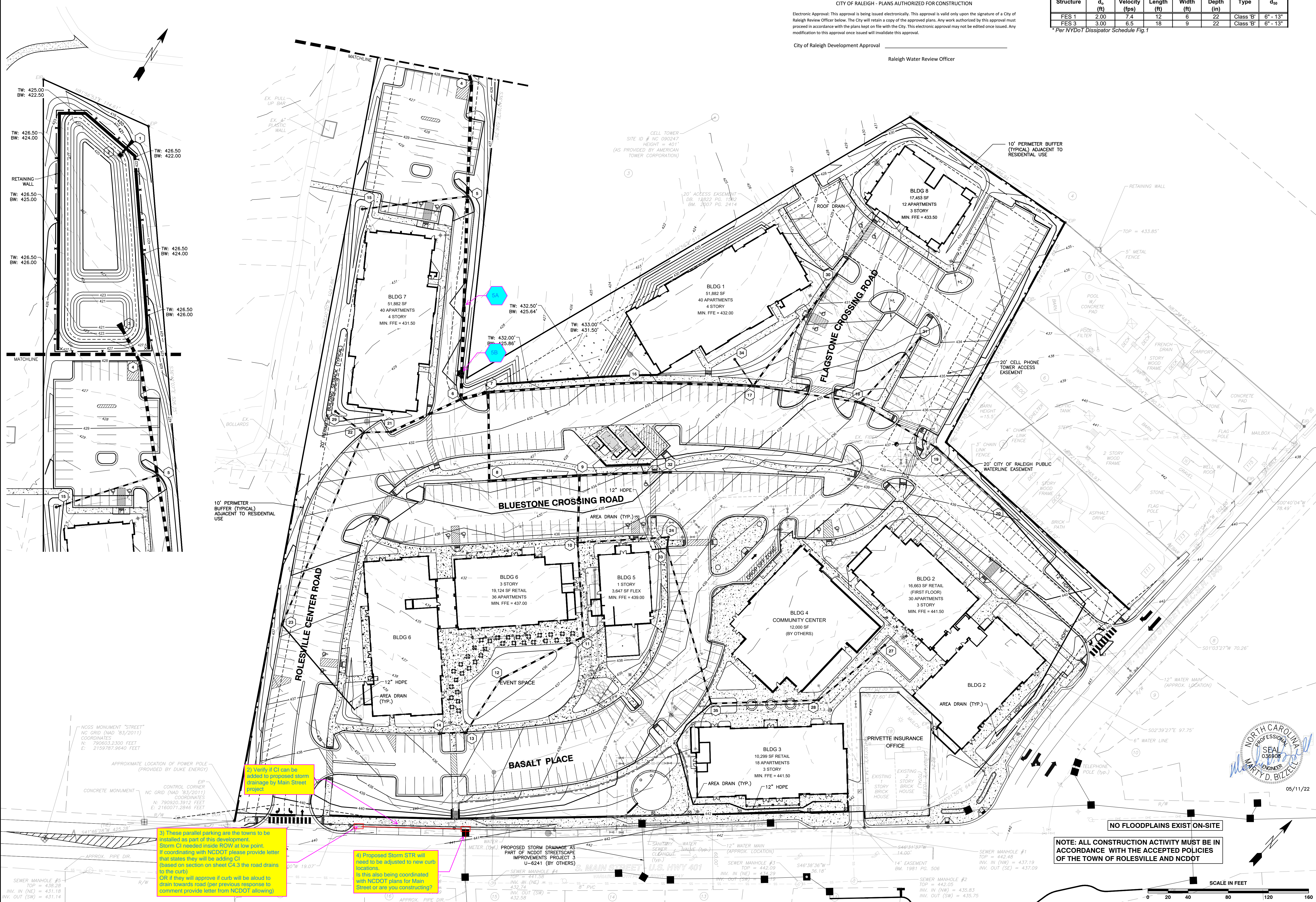
CITY OF RALEIGH - PLANS AUTHORIZED FOR CONSTRUCTION

Electronic Approval: This approval is being issued electronically. This approval is valid only upon the signature of a City of Raleigh Review Officer below. The City will retain a copy of the approved plans. Any work authorized by this approval must proceed in accordance with the plans kept on file with the City. This electronic approval may not be edited once issued. Any modification to this approval once issued will invalidate this approval.

City of Raleigh Development Approval \_\_\_\_\_  
 Raleigh Water Review Officer \_\_\_\_\_

| Structure | d <sub>1</sub> (ft) | Velocity (fps) | Length (ft) | Width (ft) | Depth (in) | Type      | d <sub>50</sub> |
|-----------|---------------------|----------------|-------------|------------|------------|-----------|-----------------|
| FES 1     | 2.00                | 7.4            | 12          | 6          | 22         | Class 'B' | 6" - 13"        |
| FES 3     | 3.00                | 6.5            | 18          | 9          | 22         | Class 'B' | 6" - 13"        |

\* Per NYDOT Dissipator Schedule Fig.1



R:\2019\19157 - Rolesville Town Center\CIVIL\04 Construction\04 - 19157\_Grading.dwg, Grading Plan, 5/17/2023 3:33:20 PM, marc.mueller

2) Verify if CI can be added to proposed storm drainage by Main Street project.

3) These parallel parking are the towns to be installed as part of this development. Storm CI needed inside ROW at low point. If coordinating with NCDOT please provide letter that states they will be adding CI (based on section on sheet CA.3 the road drains to the curb) OR if they will approve if curb will be allowed to drain towards road (per previous response to comment provide letter from NCDOT allowing)

4) Proposed Storm STR will need to be adjusted to new curb locations. Is this also being coordinated with NCDOT plans for Main Street or are you constructing?

NOTE: ALL CONSTRUCTION ACTIVITY MUST BE IN ACCORDANCE WITH THE ACCEPTED POLICIES OF THE TOWN OF ROLESVILLE AND NCDOT



**BASS, NIXON & KENNEDY, INC.**  
 CONSULTING ENGINEERS  
 6310 CHAPEL HILL ROAD, SUITE 250, RALEIGH, NC 27607  
 TELEPHONE: (919) 881-1122 FAX: (919) 881-6868  
 CERTIFICATION NUMBERS: NCBELS (C-0110); NCBOLA (C-0267)

| NO. | DATE | DESCRIPTION | BY |
|-----|------|-------------|----|
|     |      |             |    |

GRADING PLAN

SCALE: 1" = 40'

**COBBLESTONE VILLAGE**  
 MIXED USE DEVELOPMENT  
 TOWN OF ROLESVILLE, WAKE COUNTY, NORTH CAROLINA

SHEET **C3.1**

NOT RELEASED FOR CONSTRUCTION OR BID SOLICITATION