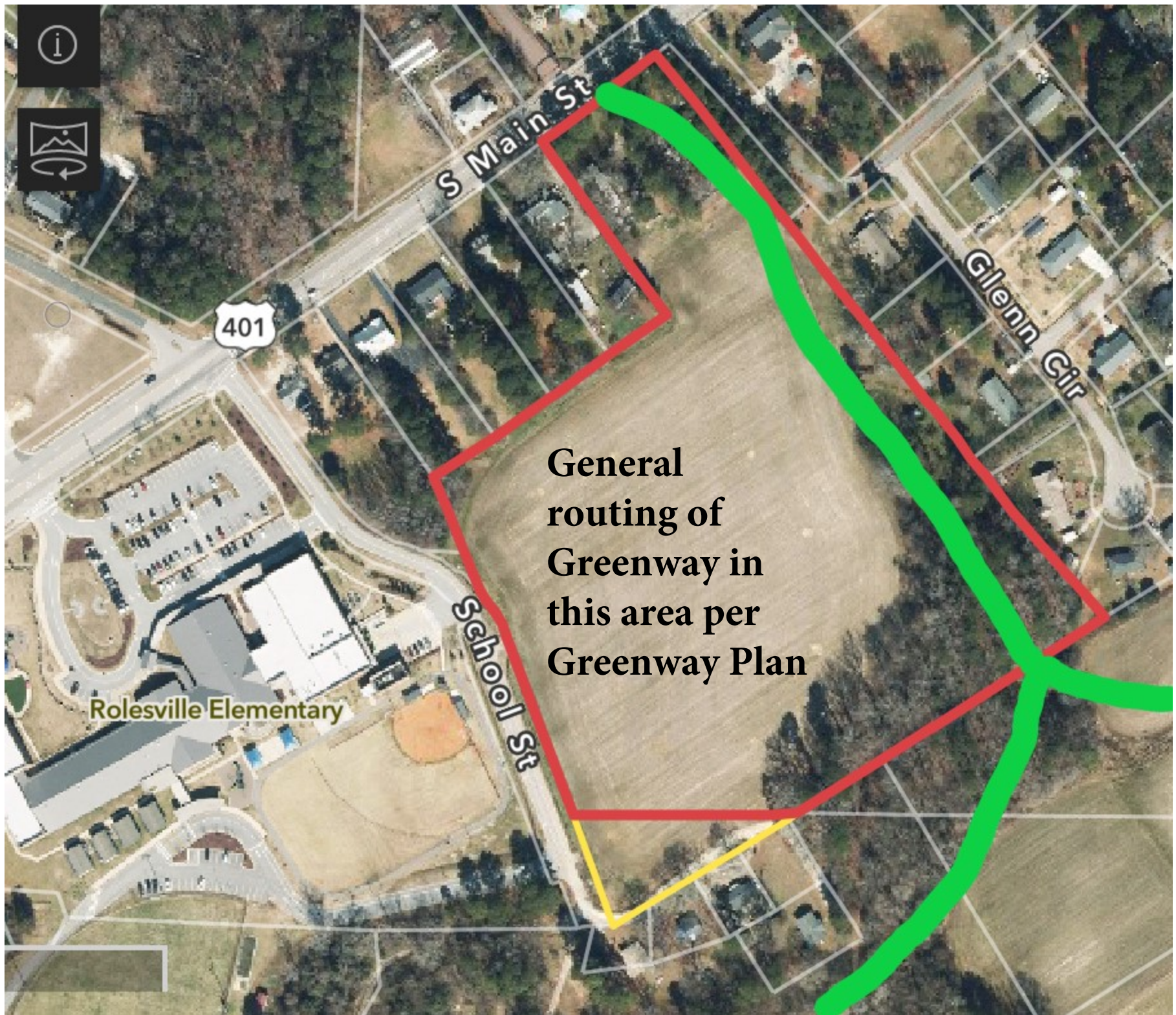


Excerpt from GREENWAY PLAN





**General
routing of
Greenway in
this area per
Greenway Plan**

SCARBORO APARTMENTS CONCEPT 2

V1 - REZ-
201 S Mc

15.12 AC
PLAT ID: 128312
TO:
15.2 UNITS/AC
32 UP TO 42 UNITS/AC DESIGN ALTERNATIVE
C-102
D-112
D-142
D-205
22 OR 105 OF BUILDING PROVIDED
1.4 SPACES/UNIT + 350 SPACES
250 SPACES
105 UNITS INCLUDE
2 SMALL OPEN SPACES TYPE

TOTAL UNITS = 240
PARKING RATE = 1.6/UNIT

0 20' 40' 100'
SCALE 1" = 40'



| | | |
|---------------------|-------------------|---------------------|
| DRAWN BY: CRM | CHECKED BY: TS | PROJECT NO: 2275 |
| DATE: 05-22-2023 | | SHEET NO: SKP |
| SCALE AS NOTED | | |

© COPYRIGHT 2023 THE DOCUMENT AND THE DESIGN ARE THE PROPERTY OF HOK U.S. ASSOCIATES, P.A. ANY REPRODUCTION WITHOUT PRIOR WRITTEN CONSENT

**STAFF
suggested
routing
based on
Concept
Plan, and
CTP
Collector
roadways**

