

SITE LEGEND	
EXISTING	
REFER TO C2.0 FOR EXISTING FEATURES LEGEND	
PROPOSED	
[Symbol]	PROPOSED STANDARD DUTY ASPHALT PAVEMENT (8" CABC & 3" S9.5B)
[Symbol]	PROPOSED CONCRETE PAVEMENT / SIDEWALK
[Symbol]	PROPOSED CONCRETE PAVEMENT - PICKLEBALL COURTS
[Symbol]	PROPERTY BOUNDARY LINE
[Symbol]	RIGHT-OF-WAY
[Symbol]	SETBACK
[Symbol]	EASEMENT
[Symbol]	CENTERLINE
[Symbol]	CONCRETE CURB
[Symbol]	FENCE (VARIES)
[Symbol]	PARKING SPACE COUNT
[Symbol]	SIGN
[Symbol]	DETECTABLE WARNING MAT.
[Symbol]	FIRE HYDRANT
[Symbol]	LIGHT POLE
[Symbol]	PARKING BLOCK SEE DETAIL SHEET C7.0

GENERAL NOTES:
SEE SHEET C1.1

- CODED NOTES:**
- PROPOSED 3,343± SF CLUBHOUSE BUILDING.
 - PROPOSED POOL AND POOL DECK TO BE DESIGNED AND PERMITTED BY OTHERS.
 - PROPOSED STANDARD DUTY ASPHALT PAVEMENT (8" CABC & 3" S9.5B).
 - PROPOSED CONCRETE SIDEWALK. SEE DETAIL ON SHEET C7.0
 - PROPOSED ADA ACCESSIBLE PARKING SPACE. SEE DETAIL ON SHEET C7.0
 - PROPOSED PARKING LOT PAVEMENT MARKINGS.
 - PROPOSED POOL FENCE. POOL FENCE TO BE PROVIDED BY POOL DESIGNER AND MUST MEET POOL CODE REQUIREMENTS.
 - PROPOSED STANDARD CURB AND GUTTER. SEE DETAIL ON SHEET C7.0
 - CONNECT TO EXISTING SIDEWALK.
 - PROPOSED ACCESSIBLE PARKING SIGN "VAN ACCESSIBLE" TO BE INSTALLED PER MUTCD. SEE DETAIL SHEET C7.0.
 - PROPOSED ACCESSIBLE PARKING SIGN TO BE INSTALLED PER MUTCD. SEE DETAIL SHEET C7.0.
 - PROPOSED PICKLEBALL COURTS. REFER TO LANDSCAPE ARCHITECT SET FOR DETAILS.
 - PROPOSED TOT LOT AREA TO BE SPECIFIED IN LANDSCAPE FURNISHING PLANS.
 - PROPOSED BENCH TO BE SPECIFIED IN LANDSCAPE FURNISHING PLANS.
 - PROPOSED MAIL KIOSK WITH 6" CONCRETE PAD. REFER TO FINAL LANDSCAPE ARCHITECT SET FOR DETAILS ADDITIONALLY SEE SHEET C7.2.
 - PROPOSED PICKLEBALL COURT FENCE. REFERENCE FINAL LANDSCAPE PLANS.
 - ~~PROPOSED~~
 - CURB TRANSITION FROM CURB AND GUTTER TO INTEGRAL CURB. SEE DETAIL SHEET C7.0.
 - ADA RAMPS WITH 5' LANDINGS.
 - PROPOSED STOP SIGN (R1-1) TO BE INSTALLED PER MUTCD.
 - PROPOSED STOP BAR PAVEMENT MARKING.
 - CONNECT TO EXISTING CURB AND GUTTER.
 - PROPOSED RIBBON CURB. SEE DETAIL ON SHEET C7.0.
 - PROPOSED CURB TAPER. SEE DETAIL C7.0.
 - PROPOSED LIGHT DUTY BITUMINOUS CONCRETE. SEE DETAIL ON SHEET C7.0.
 - PROPOSED TRUNCATED DOME
 - PROPOSED SPILL TYPE CURB
 - PROPOSED CROSSWALK STRIPING PER NCDOT DETAIL 1205.07.
 - PROPOSED ±616 SF COVERED PAVILION

LINE #	LENGTH	DIRECTION
L1	40.537	N69° 06' 05.04"W
L2	22.064	N73° 23' 37.03"W
L3	80.135	S33° 19' 15.52"W
L4	36.425	S03° 31' 54.46"W
L5	87.452	S34° 35' 42.38"W
L6	54.859	S30° 40' 31.17"E

CURVE #	RADIUS	ARC LENGTH	CHORD LENGTH	CHORD BEARING	DELTA	TANGENT
C1	100.00'	7.49'	7.49'	N71° 14' 51"W	004° 17' 32"	3.75'
C2	40.50'	51.80'	48.34'	S69° 57' 49"W	073° 17' 07"	30.12'
C3	35.00'	18.20'	17.99'	S18° 28' 35"W	029° 47' 21"	9.31'
C4	28.00'	15.18'	15.00'	S19° 03' 48"W	031° 03' 48"	7.78'
C5	285.00'	75.30'	75.08'	S42° 09' 51"W	015° 08' 17"	37.87'
C6	25.00'	35.08'	32.28'	S09° 31' 44"W	080° 24' 31"	21.13'

NOTE:

- N & E: VALUES ARE ON ASSUMED COORDINATE PLANE, AND ARE NOT ASSUMED TO BE PRESENT ON STATE PLANE COORDINATE SYSTEM.
- CONDITIONS OF APPROVAL PER APPROVED SUBDIVISION KALAS FALLS PHASE 2.
- AMENITY
TOTAL AREA: 2.93 AC
IMPERVIOUS AREA: 1.22 AC



MERITAGE HOME
KALAS FALLS PHASE 2
AMENITY AND OPEN SPACE
1832 ROLESVILLE ROAD,
WAKE COUNTY, NC

Revisions / Submissions		
ID	Description	Date
01	ROLESVILLE COMMENTS	12/19/2025
02	ROLESVILLE COMMENTS	02/18/2026

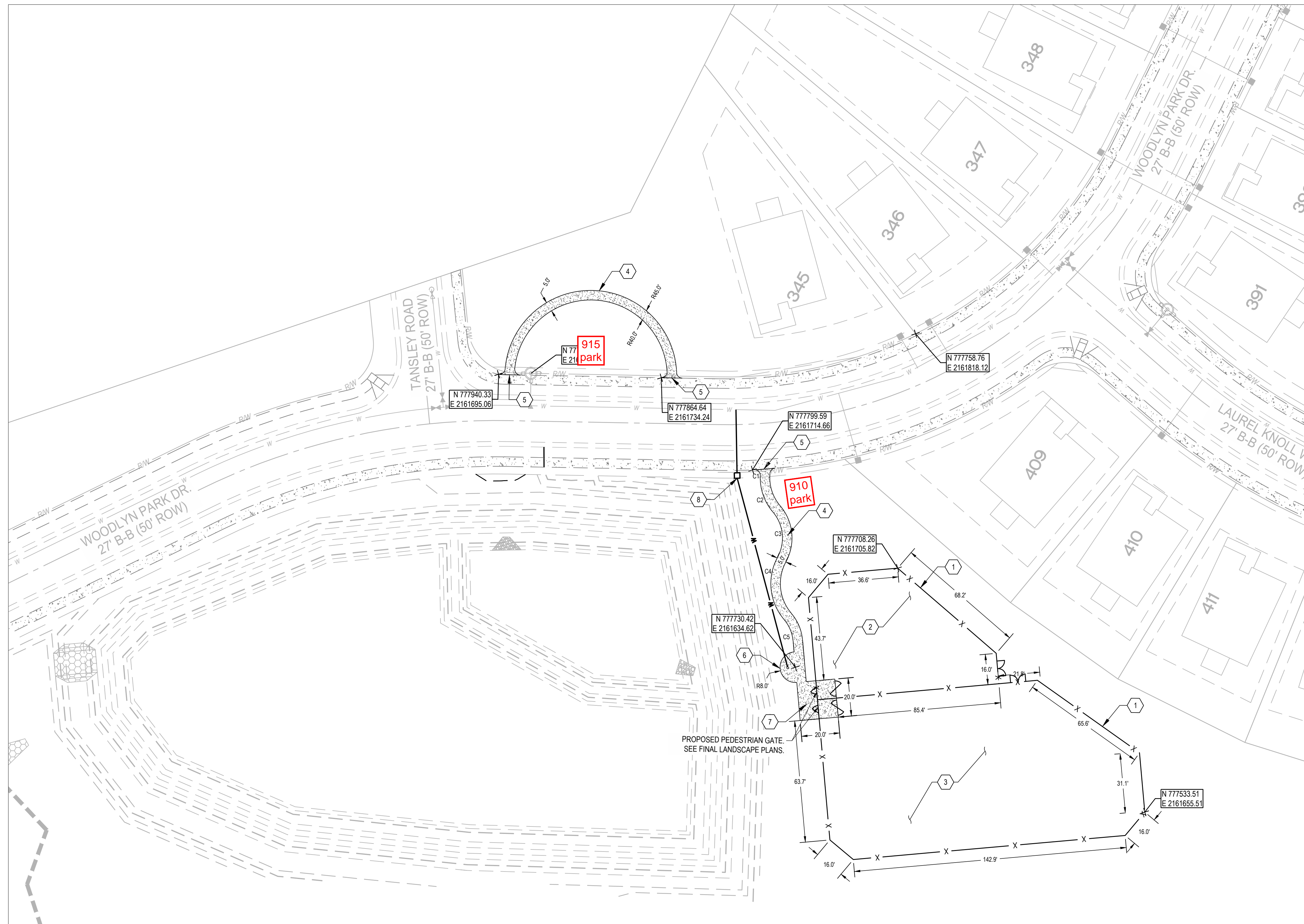
© 2025 CESO, INC.
Project Number: 766740-01 / -02
Scale: AS SHOWN
Drawn By: RM
Checked By: CG
Date: 10/31/2025
Issue: NOT FOR CONSTRUCTION

Drawing Title:
SITE PLAN
AMENITY AREA

C4.1



SEVENTY-TWO (72) HOURS BEFORE DIGGING IS TO COMMENCE, THE CONTRACTORS SHALL NOTIFY THE FOLLOWING AGENCIES: NORTH CAROLINA UTILITIES PROTECTION SERVICE AT 811 OR 800-632-4949 AND ALL OTHER AGENCIES WHICH MIGHT HAVE UNDERGROUND UTILITIES INVOLVING THIS PROJECT AND ARE NONMEMBERS OF STATE UTILITIES PROTECTION SERVICE



SITE LEGEND	
EXISTING	
REFER TO C2.0 FOR EXISTING FEATURES LEGEND	
PROPOSED	
	PROPOSED CONCRETE PAVEMENT/ SIDEWALK
	R/W RIGHT-OF-WAY
	PROPERTY LINE
	SETBACK
	EASEMENT
	CENTERLINE
	CONCRETE CURB
	PAVEMENT/WALK
	FENCE
	PARKING SPACE COUNT
	SIGN
	DETECTABLE WARNING MAT.
	FIRE HYDRANT
	LIGHT POLE
	CONCRETE BUMPER BLOCK

GENERAL NOTES:
SEE SHEET C1.1

CODED NOTES:

- PROPOSED 48" HT FENCE.
- PROPOSED SMALL DOG PARK.
- PROPOSED LARGE DOG PARK.
- PROPOSED CONCRETE SIDEWALK.
- CONNECT TO EXISTING SIDEWALK.
- PROPOSED DOG WASH STATION.
- PROPOSED SALLY PORT ENTRY.
- PROPOSED 3/4" WATER LINE WITH METER.

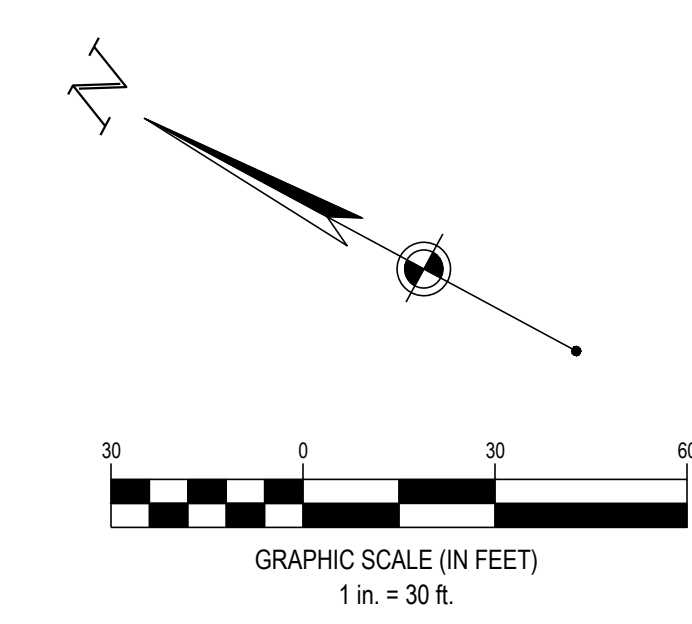
NOTE:

N: & E: VALUES ARE ON ASSUMED COORDINATE PLANE, AND ARE NOT ASSUMED TO BE PRESENT ON STATE PLANE COORDINATE SYSTEM.

SITE QUANTITY:

- A. DOG PARK:
TOTAL AREA: 0.94 AC
IMPERVIOUS AREA: 0.02 AC
- B. OPEN SPACE:
TOTAL AREA: 0.55 AC
IMPERVIOUS AREA: 0.01 AC

LOT & R/W CURVE TABLE						
CURVE	RADIUS	ARC LENGTH	CHORD LENGTH	CHORD BEARING	DELTA ANGLE	TANGENT
C1	3.00'	4.98'	4.42'	N16° 01' 46"E	095° 02' 13"	3.28'
C2	27.63'	20.56'	20.09'	N42° 13' 48"E	042° 38' 09"	10.78'
C3	20.97'	25.35'	23.83'	N55° 31' 54"E	069° 14' 22"	14.48'
C4	28.82'	35.03'	32.92'	N55° 20' 01"E	069° 38' 07"	20.05'
C5	19.14'	11.97'	11.78'	N38° 26' 14"E	035° 50' 33"	6.19'



SEVENTY-TWO (72) HOURS BEFORE DIGGING IS TO COMMENCE, THE CONTRACTORS SHALL NOTIFY THE FOLLOWING AGENCIES: NORTH CAROLINA UTILITIES PROTECTION SERVICE AT 811 OR 800-632-4949 AND ALL OTHER AGENCIES WHICH MIGHT HAVE UNDERGROUND UTILITIES INVOLVING THIS PROJECT AND ARE NONMEMBERS OF STATE UTILITIES PROTECTION SERVICE



MERITAGE HOME
KALAS FALLS PHASE 2
AMENITY AND OPEN SPACE
1832 ROLESVILLE ROAD,
WAKE COUNTY, NC

Revisions / Submissions		
ID	Description	Date
01	ROLESVILLE COMMENTS	12/19/2025
02	ROLESVILLE COMMENTS	02/18/2026

© 2025 CESO, INC.
Project Number: 766740-01 / -02
Scale: AS SHOWN
Drawn By: RM
Checked By: CG
Date: 10/31/2025
Issue: NOT FOR CONSTRUCTION

Drawing Title:
SITE PLAN OPEN SPACE & DOG PARK

C4.2