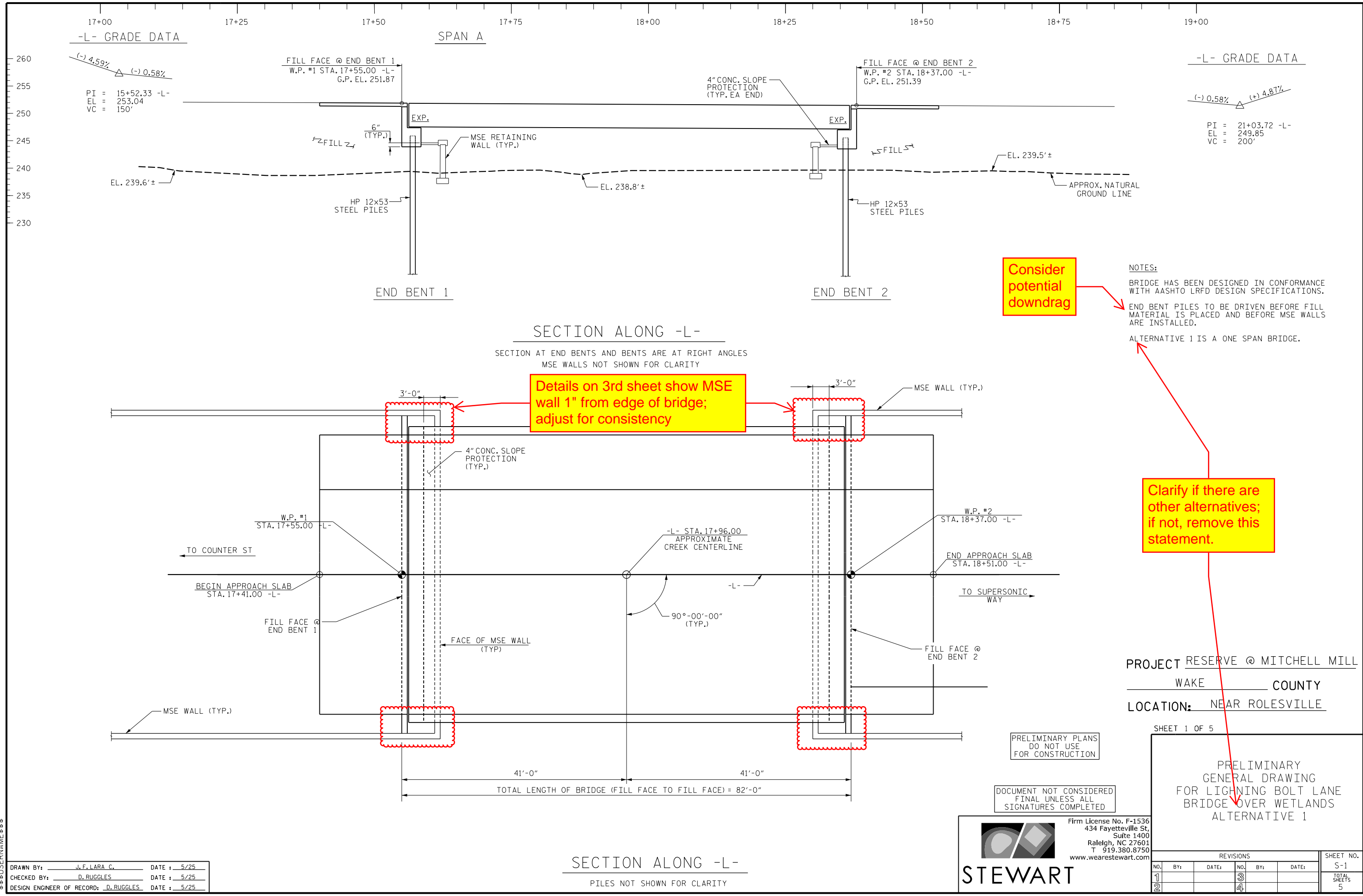


+

+

\$\$\$\$SYTIME\$\$\$\$
\$\$\$\$\$GN\$\$\$\$
\$\$\$\$\$USERNAME\$\$\$\$



DRAWN BY: J. F. LARA, C. DATE: 5/25
CHECKED BY: D. RUGGLES DATE: 5/25
DESIGN ENGINEER OF RECORD: D. RUGGLES DATE: 5/25

SECTION ALONG -L-
PILES NOT SHOWN FOR CLARITY

PRELIMINARY PLANS
DO NOT USE
FOR CONSTRUCTION

DOCUMENT NOT CONSIDERED
FINAL UNLESS ALL
SIGNATURES COMPLETED

STEWART

Firm License No. F-1536
434 Fayetteville St,
Suite 1400
Raleigh, NC 27601
T 919.380.8750
www.wearestewart.com

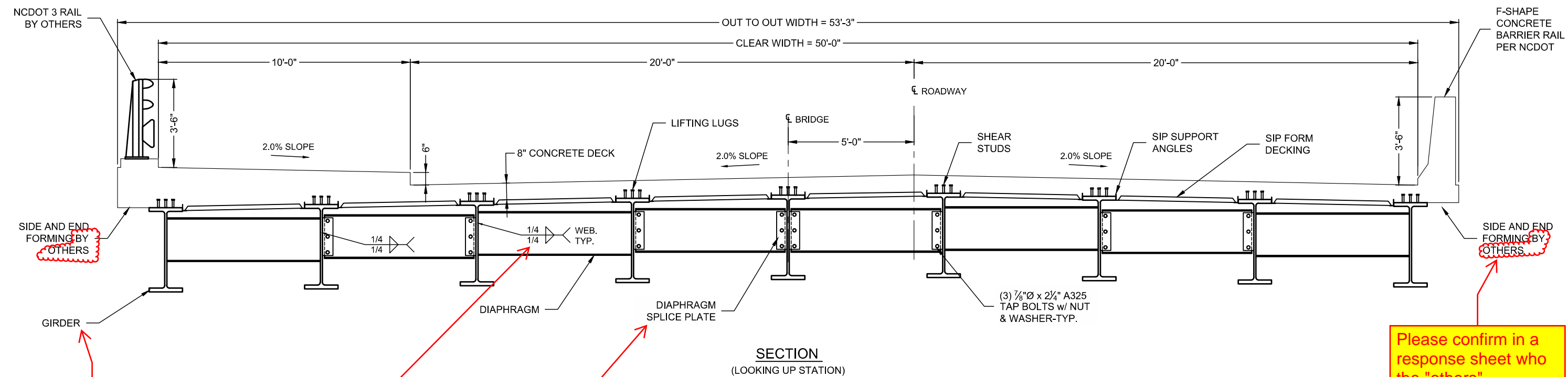
PROJECT RESERVE @ MITCHELL MILL
WAKE COUNTY
LOCATION: NEAR ROLESVILLE

SHEET 1 OF 5

PRELIMINARY
GENERAL DRAWING
FOR LIGHTNING BOLT LANE
BRIDGE OVER WETLANDS
ALTERNATIVE 1

REVISIONS						SHEET NO.
NO.	BY:	DATE:	NO.	BY:	DATE:	S-1
1			3			TOTAL SHEETS
2			4			5

I:\MERLIN\PROJECTS\16302006\30254\10-BIG R ROLLED GIRDER\DRAWINGS\PROPOSAL\30254-010 PRELIMINARY SKETCH.DWG 5/29/2025 1:00 PM



Include girder sizes and details

Include splice plates details

Please confirm why some diaphragms are shown welded to girders and others bolted.

Please confirm in a response sheet who the "others" responsible for this work will be.

Please confirm if there are standard bridge sheets that this bridge is referencing; there does not appear to be much information on these plans.

PRELIMINARY
DRAWINGS
NOT FOR
CONSTRUCTION

The design and information shown on this drawing is provided as a service to the project owner, engineer and contractor by Contech Engineered Solutions LLC ("Contech"). Neither this drawing, nor any part thereof, may be used, reproduced or modified in any manner without the prior written consent of Contech. Failure to comply is done at the user's own risk and Contech expressly disclaims any liability or responsibility for such use.

If discrepancies between the supplied information upon which the drawing is based and actual field conditions are encountered as site work progresses, these discrepancies must be reported to Contech immediately for re-evaluation of the design. Contech accepts no liability for designs based on missing, incomplete or inaccurate information supplied by others.

MARK	DATE	REVISION DESCRIPTION	BY

CONTECH
ENGINEERED SOLUTIONS LLC
A QUORRETT COMPANY
19060 Cr 66 Greeley, CO 80631
800-328-2047 320-345-9126 320-566-3148 FAX

BIG R
CONTECH
CONTRACT
DRAWING

80'-0" x 50'-0"
MITCHEL MILL BRIDGE
ROLLED GIRDER - SITE-SPECIFIC MODULAR
ROLESVILLE, NC

PROJECT No.: 830254	SEQ. No.: 010	DATE: 5/29/2025
DESIGNED: DBA	DRAWN: DBA	
CHECKED: XXX	APPROVED: XXX	
SHEET NO.: 5	OF 6	



THE TOP SURFACE OF THE CAP EXCEPT THE BRIDGE SEAT
BUILDUPS SHALL BE SLOPED TRANSVERSELY FROM THE FILL
FACE TO THE BACK FACE AT THE RATE OF 2%.



Confirm how deep the steel sleeves go.



STEWART

REVISIONS						SHEET NO. S-4
NO.	BY:	DATE:	NO.	BY:	DATE:	
1			3			TOTAL SHEETS 5
2			4			

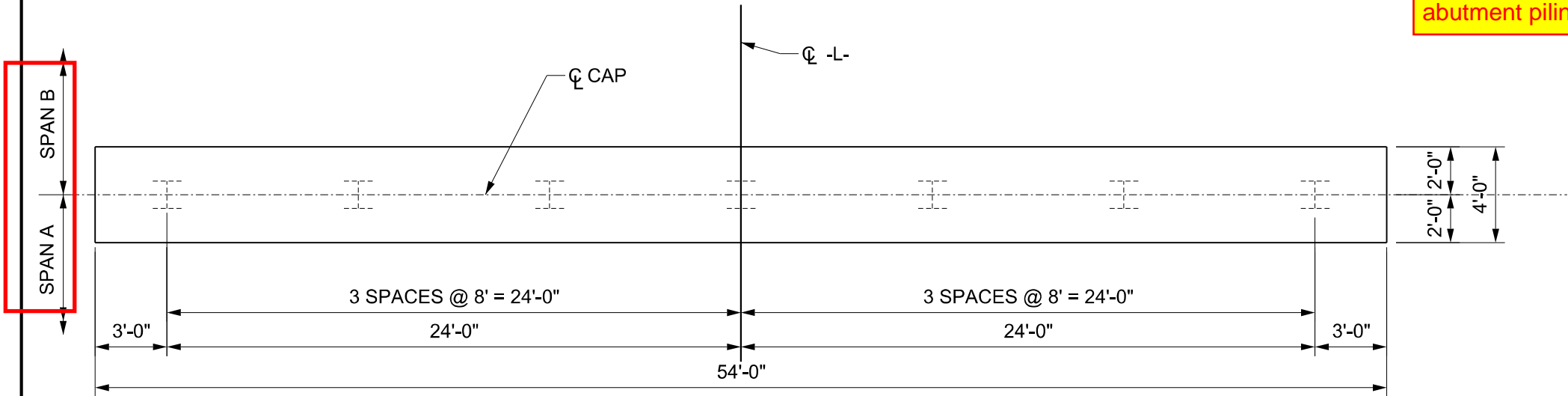
DRAWN BY: J. F. LARA C. DATE: 5/25
CHECKED BY: D. RUGGLES DATE: 5/25
DESIGN ENGINEER OF RECORD: D. RUGGLES DATE: 5/25

This sheet appears to be details for a pier and not necessary for this alternative - Please confirm.

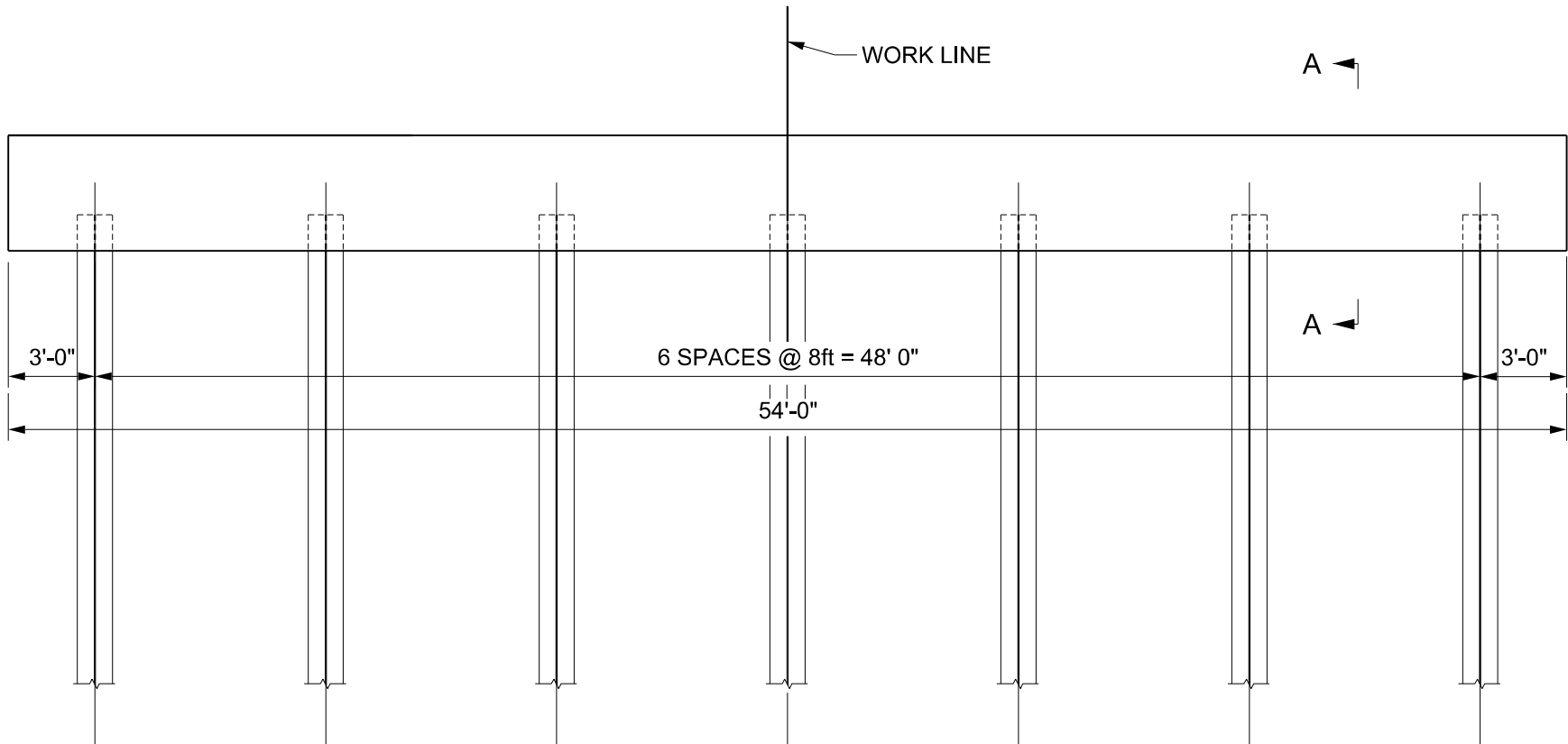
Please clarify where the driving data for the abutment piling is.

NOTES

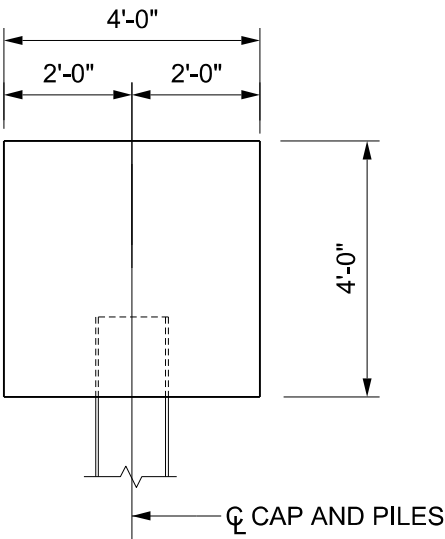
1. PILES AT BENT NO. 1 ARE DESIGNED FOR AN ALLOWABLE AXIAL (COMPRESSION) CAPACITY OF 50 TONS PER PILE.
2. DRIVE PILES TO A REQUIRED DRIVING RESISTANCE OF 80 TONS PER PILE.
3. PILE DRIVING CRITERIA SHOULD BE ESTABLISHED BY A QUALIFIED ENGINEER. THE DRIVING CRITERIA AND PILE DRIVING EQUIPMENT INFORMATION SHALL BE SUBMITTED TO THE OWNER'S TESTING AGENCY NO LESS THAN FIVE (5) BUSINESS DAYS PRIOR TO THE START OF PILE DRIVING OPERATIONS.
4. PILE INSTALLATION SHOULD BE OBSERVED AND LOGGED ON A FULL TIME BASIS BY A QUALIFIED INSPECTOR WORKING UNDER THE DIRECTION OF A GEOTECHNICAL ENGINEER.



PLAN



ELEVATION



SECTION A-A

PROJECT RESERVE @ MITCHELL MILL
WAKE COUNTY
LOCATION: NEAR ROLESVILLE

SHEET 5 OF 5

PRELIMINARY PLANS
DO NOT USE
FOR CONSTRUCTION

DOCUMENT NOT CONSIDERED
FINAL UNLESS ALL
SIGNATURES COMPLETED



STEWART

Firm License No. F-1536
434 Fayetteville St,
Suite 1400
Raleigh, NC 27601
T 919.380.8750
www.wearestewart.com

SUBSTRUCTURE
TYPICAL
BENT DETAILS

REVISIONS						SHEET NO.
NO.	BY:	DATE:	NO.	BY:	DATE:	
1			3			S-5
2			4			
TOTAL SHEETS						5

\$\$\$SYTIME\$\$\$
\$\$\$DGN\$\$\$
\$\$\$USERNAME\$\$\$

DRAWN BY: J. F. LARA C. DATE : 5/25
CHECKED BY: D. RUGGLES DATE : 5/25
DESIGN ENGINEER OF RECORD: D. RUGGLES DATE : 5/25