

**CITY OF RALEIGH PUBLIC UTILITIES
STANDARD UTILITY NOTES (AS APPLICABLE)**

- ALL MATERIALS & CONSTRUCTION METHODS SHALL BE IN ACCORDANCE WITH CITY OF RALEIGH DESIGN STANDARDS, DETAILS & SPECIFICATIONS (REFERENCE: CORPUD HANDBOOK, CURRENT EDITION).
- UTILITY SEPARATION REQUIREMENTS:
 - A DISTANCE OF 100' SHALL BE MAINTAINED BETWEEN SANITARY SEWER & ANY PRIVATE OR PUBLIC WATER SUPPLY SOURCE SUCH AS AN IMPROVED RESERVOIR USED AS A SOURCE OF DRINKING WATER. IF ADEQUATE LATERAL SEPARATION CANNOT BE ACHIEVED, FERROUS SANITARY SEWER PIPE SHALL BE SPECIFIED & INSTALLED TO WATERLINE SPECIFICATIONS. HOWEVER, THE MINIMUM SEPARATION SHALL NOT BE LESS THAN 25' FROM A PRIVATE WELL OR 50' FROM A PUBLIC WELL.
 - WHEN INSTALLING WATER &/OR SEWER MAINS, THE HORIZONTAL SEPARATION BETWEEN UTILITIES SHALL BE 10'. IF THIS SEPARATION CANNOT BE MAINTAINED DUE TO EXISTING CONDITIONS, THE VARIATION ALLOWED IS THE WATER MAIN IN A SEPARATE TRENCH WITH THE ELEVATION OF THE WATER MAIN AT LEAST 18" ABOVE THE TOP OF THE SEWER & MUST BE APPROVED BY THE PUBLIC UTILITIES DIRECTOR. ALL DISTANCES ARE MEASURED FROM OUTSIDE DIAMETER TO OUTSIDE DIAMETER.
 - WHERE IT IS IMPOSSIBLE TO OBTAIN PROPER SEPARATION, OR ANYTIME A SANITARY SEWER PASSES OVER A WATERMAIN, DIP MATERIALS OR STEEL ENCASUREMENT EXTENDED 10' ON EACH SIDE OF CROSSING MUST BE SPECIFIED & INSTALLED TO WATERLINE SPECIFICATIONS.
 - 5.0' MINIMUM HORIZONTAL SEPARATION IS REQUIRED BETWEEN ALL SANITARY SEWER & STORM SEWER FACILITIES, UNLESS DIP MATERIAL IS SPECIFIED FOR SANITARY SEWER.
 - MAINTAIN 18" MIN. VERTICAL SEPARATION AT ALL WATERMAIN & RCP STORM DRAIN CROSSINGS; MAINTAIN 18" MIN. VERTICAL SEPARATION AT ALL SANITARY SEWER & RCP STORM DRAIN CROSSINGS. WHERE ADEQUATE SEPARATIONS CANNOT BE ACHIEVED, SPECIFY DIP MATERIALS & A CONCRETE CRADLE HAVING 6" MIN. CLEARANCE (PER CORPUD DETAILS W-41 & S-49).
 - ALL OTHER UNDERGROUND UTILITIES SHALL CROSS WATER & SEWER FACILITIES WITH 18" MIN. VERTICAL SEPARATION REQUIRED.
- ANY NECESSARY FIELD REVISIONS ARE SUBJECT TO REVIEW & APPROVAL OF AN AMENDED PLAN &/OR PROFILE BY THE CITY OF RALEIGH PUBLIC UTILITIES DEPARTMENT PRIOR TO CONSTRUCTION.
- DEVELOPER SHALL PROVIDE 30 DAYS ADVANCE WRITTEN NOTICE TO OWNER FOR ANY WORK REQUIRED WITHIN AN EXISTING CITY OF RALEIGH UTILITY EASEMENT TRAVERSING PRIVATE PROPERTY.
- CONTRACTOR SHALL MAINTAIN CONTINUOUS WATER & SEWER SERVICE TO EXISTING RESIDENCES & BUSINESSES THROUGHOUT CONSTRUCTION OF PROJECT. ANY NECESSARY SERVICE INTERRUPTIONS SHALL BE PRECEDED BY A 24 HOUR ADVANCE NOTICE TO THE CITY OF RALEIGH PUBLIC UTILITIES DEPARTMENT.
- 3.0' MINIMUM COVER IS REQUIRED ON ALL WATER MAINS & SEWER FORCEMAINS. 4.0' MINIMUM COVER IS REQUIRED ON ALL REUSE MAINS.
- IT IS THE DEVELOPER'S RESPONSIBILITY TO ABANDON OR REMOVE EXISTING WATER & SEWER SERVICES NOT BEING USED IN REDEVELOPMENT OF A SITE UNLESS OTHERWISE DIRECTED BY THE CITY OF RALEIGH PUBLIC UTILITIES DEPARTMENT. THIS INCLUDES ABANDONING TAP AT MAIN & REMOVAL OF SERVICE FROM ROW OR EASEMENT PER CORPUD HANDBOOK PROCEDURE.
- INSTALL 3/4" COPPER WATER SERVICES WITH METERS LOCATED AT ROW OR WITHIN A 2'X2' WATERLINE EASEMENT IMMEDIATELY ADJACENT. NOTE: IT IS THE APPLICANT'S RESPONSIBILITY TO PROPERLY SIZE THE WATER SERVICE FOR EACH CONNECTION TO PROVIDE ADEQUATE FLOW & PRESSURE.
- INSTALL 4" PVC SEWER SERVICES @ 1.0% MINIMUM GRADE WITH CLEANOUTS LOCATED AT ROW OR EASEMENT LINE & SPACED EVERY 75 LINEAR FEET MAXIMUM.
- PRESSURE REDUCING VALVES ARE REQUIRED ON ALL WATER SERVICES EXCEEDING 80 PSI; BACKWATER VALVES ARE REQUIRED ON ALL SANITARY SEWER SERVICES HAVING BUILDING DRAINS LOWER THAN 1.0' ABOVE THE NEXT UPSTREAM MANHOLE.
- ALL ENVIRONMENTAL PERMITS APPLICABLE TO THE PROJECT MUST BE OBTAINED FROM NCDM, USACE &/OR FEMA FOR ANY RIPARIAN BUFFER, WETLAND &/OR FLOODPLAIN IMPACTS (RESPECTIVELY) PRIOR TO CONSTRUCTION.
- NCDOT / RAILROAD ENCROACHMENT AGREEMENTS ARE REQUIRED FOR ANY UTILITY WORK (INCLUDING MAIN EXTENSIONS & SERVICE TAPS) WITHIN STATE OR RAILROAD ROW PRIOR TO CONSTRUCTION.
- GREASE INTERCEPTOR / OIL WATER SEPARATOR SIZING CALCULATIONS & INSTALLATION SPECIFICATIONS SHALL BE APPROVED BY THE RW FOG PROGRAM COORDINATOR PRIOR TO ISSUANCE OF A UC / BLDG PERMIT. CONTACT (919) 996-4516 OR FOG@RALEIGHNC.GOV FOR MORE INFORMATION.
- CROSS-CONNECTION CONTROL PROTECTION DEVICES ARE REQUIRED BASED ON DEGREE OF HEALTH HAZARD INVOLVED AS LISTED IN APPENDIX B OF THE RULES GOVERNING PUBLIC WATER SYSTEMS IN NORTH CAROLINA. THESE GUIDELINES ARE THE MINIMUM REQUIREMENTS. THE DEVICES SHALL MEET AMERICAN SOCIETY OF SANITARY ENGINEERING (ASSE) STANDARDS OR BE ON THE UNIVERSITY OF SOUTHERN CALIFORNIA APPROVAL LIST. THE DEVICES SHALL BE INSTALLED AND TESTED (BOTH INITIAL AND PERIODIC TESTING THEREAFTER) IN ACCORDANCE WITH THE MANUFACTURER'S RECOMMENDATIONS OR THE LOCAL CROSS-CONNECTION CONTROL PROGRAM, WHICHEVER IS MORE STRINGENT. A CERTIFICATE OF COMPLIANCE SHALL ALSO BE OBTAINED FROM THE RW CROSS-CONNECTION COORDINATOR FOR EACH DEVICE PRIOR TO ISSUANCE OF A UC / BLDG PERMIT. CONTACT (919) 996-5923 OR CROSS.CONNECTION@RALEIGHNC.GOV FOR MORE INFORMATION.
- NOTICE FOR PROJECTS WITH REPLACED OR OVERSIZED MAINS: IF THE CITY'S REIMBURSEMENT FOR AN OVERSIZED MAIN OR URBAN MAIN REPLACEMENT PROJECT IS \$250,000 OR GREATER - THE PROJECT MUST BE PUBLICLY BID

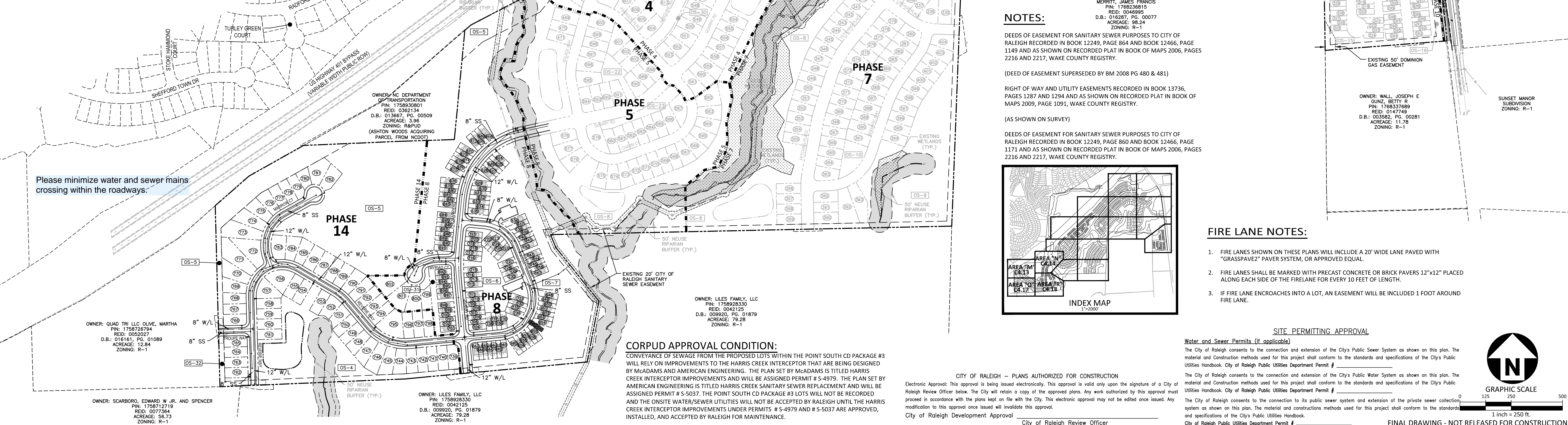


CONTRACTOR SHALL NOTIFY "811" (811) OR (1-800-632-4949) AT LEAST 3 FULL BUSINESS DAYS PRIOR TO BEGINNING CONSTRUCTION OR EXCAVATION TO HAVE EXISTING UTILITIES LOCATED. CONTRACTOR SHALL CONTACT ANY LOCAL UTILITIES THAT PROVIDE THEIR OWN LOCATOR SERVICES INDEPENDENT OF "811". REPORT ANY DISCREPANCIES TO THE ENGINEER IMMEDIATELY.

Please submit public water and sewer permit applications with the next submittal.

UTILITY LEGEND

	FIRE HYDRANT ASSEMBLY		WATERLINE
	WATER METER		WATER SERVICE LINE
	WATER VALVE		UTILITY SLEEVE
	REDUCER		SANITARY SEWER
	PLUG		SEWER SERVICE LINE
	BLOW-OFF ASSEMBLY		SEWER FORCE MAIN
	SANITARY SEWER MANHOLE		FM
	SEWER CLEAN-OUT		GAS LINE
	SEWER FLOW DIRECTION ARROW		OVERHEAD UTILITY
	YARD LIGHTS		UNDERGROUND ELECTRIC
	LIGHT POLE		TELEPHONE
	POWER POLE		EASEMENT LINE



NOTES:

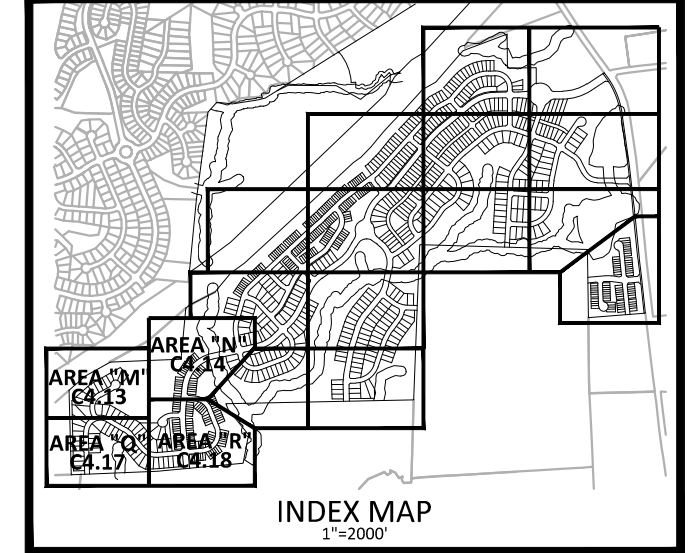
DEEDS OF EASEMENT FOR SANITARY SEWER PURPOSES TO CITY OF RALEIGH RECORDED IN BOOK 12249, PAGE 864 AND BOOK 12466, PAGE 1149 AND AS SHOWN ON RECORDED PLAT IN BOOK OF MAPS 2006, PAGES 2216 AND 2217, WAKE COUNTY REGISTRY.

(DEED OF EASEMENT SUPERSEDED BY BM 2008 PG 480 & 481)

RIGHT OF WAY AND UTILITY EASEMENTS RECORDED IN BOOK 13736, PAGES 1287 AND 1294 AND AS SHOWN ON RECORDED PLAT IN BOOK OF MAPS 2009, PAGE 1091, WAKE COUNTY REGISTRY.

(AS SHOWN ON SURVEY)

DEEDS OF EASEMENT FOR SANITARY SEWER PURPOSES TO CITY OF RALEIGH RECORDED IN BOOK 12249, PAGE 864 AND BOOK 12466, PAGE 1171 AND AS SHOWN ON RECORDED PLAT IN BOOK OF MAPS 2006, PAGES 2216 AND 2217, WAKE COUNTY REGISTRY.



FIRE LANE NOTES:

- FIRE LANES SHOWN ON THESE PLANS WILL INCLUDE A 20' WIDE LANE PAVED WITH "GRASSPAVEZ" PAVEMENT SYSTEM, OR APPROVED EQUIV.
- FIRE LANES SHALL BE MARKED WITH PRECAST CONCRETE OR BRICK PAVERS 12"x12" PLACED ALONG EACH SIDE OF THE FIRELANE FOR EVERY 10 FEET OF LENGTH.
- IF FIRE LANE ENCLOSES INTO A LOT, AN EASEMENT WILL BE INCLUDED 1 FOOT AROUND FIRE LANE.

SITE PERMITTING APPROVAL

Water and Sewer Permits (if applicable)

The City of Raleigh consents to the connection and extension of the City's Public Sewer System as shown on this plan. The material and Construction methods used for this project shall conform to the standards and specifications of the City's Public Utilities Handbook, City of Raleigh Public Utilities Department Permit # _____

The City of Raleigh consents to the connection and extension of the City's Public Water System as shown on this plan. The material and Construction methods used for this project shall conform to the standards and specifications of the City's Public Utilities Handbook, City of Raleigh Public Utilities Department Permit # _____

The City of Raleigh consents to the connection to its public sewer system and extension of the private sewer collection system as shown on this plan. The material and construction methods used for this project shall conform to the standards and specifications of the City's Public Utilities Handbook, City of Raleigh Public Utilities Department Permit # _____

FINAL DRAWING - NOT RELEASED FOR CONSTRUCTION

CORPUD APPROVAL CONDITION:

CONVEYANCE OF SEWAGE FROM THE PROPOSED LOTS WITHIN THE POINT SOUTH CD PACKAGE #3 WILL RELY ON IMPROVEMENTS TO THE HARRIS CREEK INTERCEPTOR THAT ARE BEING DESIGNED BY McADAMS AND AMERICAN ENGINEERING. THE PLAN SET BY McADAMS IS TITLED HARRIS CREEK INTERCEPTOR IMPROVEMENTS AND WILL BE ASSIGNED PERMIT # S-4979. THE PLAN SET BY AMERICAN ENGINEERING IS TITLED HARRIS CREEK SANITARY SEWER REPLACEMENT AND WILL BE ASSIGNED PERMIT # S-5037. THE POINT SOUTH CD PACKAGE #3 LOTS WILL NOT BE RECORDED AND THE ONSITE WATER/SEWER UTILITIES WILL NOT BE ACCEPTED BY RALEIGH UNTIL THE HARRIS CREEK INTERCEPTOR IMPROVEMENTS UNDER PERMITS # S-4979 AND # S-5037 ARE APPROVED, INSTALLED, AND ACCEPTED BY RALEIGH FOR MAINTENANCE.

CITY OF RALEIGH - PLANS AUTHORIZED FOR CONSTRUCTION

Electronic Approval: This approval is being issued electronically. This approval is valid only upon the signature of a City of Raleigh Review Officer below. The City will retain a copy of the approved plans. Any work authorized by this approval must proceed in accordance with the plans kept on file with the City. This electronic approval may not be edited once issued. Any modification to this approval once issued will invalidate this approval.

City of Raleigh Development Approval _____
City of Raleigh Review Officer _____

The John R. McAdams Company, Inc.
2905 Meridian Parkway
Durham, NC 27713

phone 919. 361. 5000
fax 919. 361. 2269
license number: C-0293, C-187

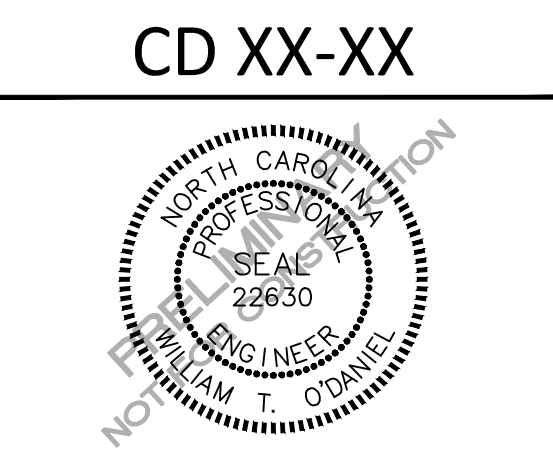
www.mcadamsco.com

CLIENT

ASHTON RALEIGH RESIDENTIAL, LLC.
900 RIDGEFIELD DRIVE, SUITE 335
RALEIGH, NORTH CAROLINA 27609
PHONE: 919. 422. 7663
CONTACT: BOB MISHLER



**THE POINT
PHASES 8 AND 14
CONSTRUCTION DRAWINGS - PACKAGE 3
EAST YOUNG STREET
TOWN OF ROLESVILLE, WAKE FOREST TOWNSHIP,
WAKE COUNTY, NORTH CAROLINA**



REVISIONS

NO.	DATE

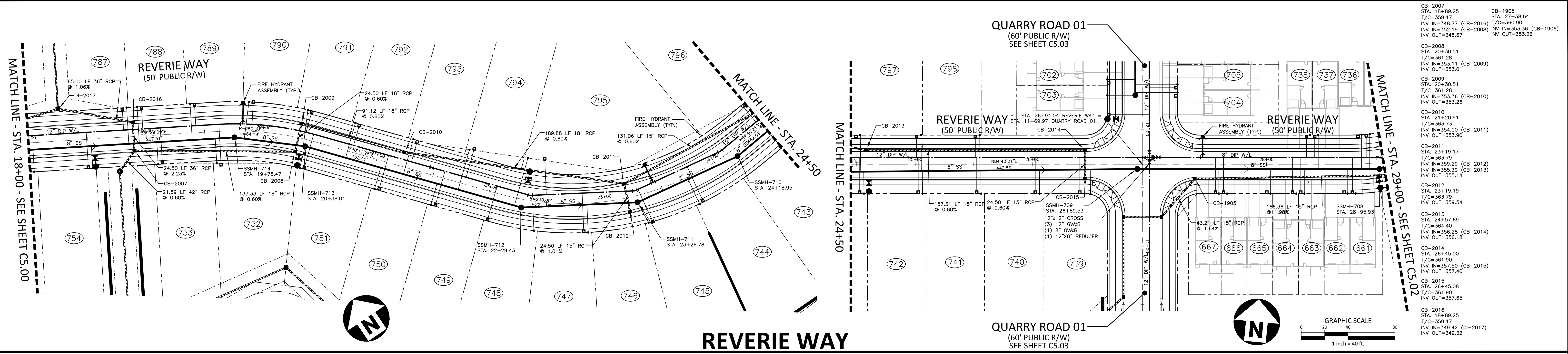
PLAN INFORMATION

PROJECT NO. AWH-20000
FILENAME AWH20000-CD-PKG-03-AOU1
CHECKED BY WTO
DRAWN BY TKD
SCALE 1"=250'
DATE 12.13.2023

SHEET

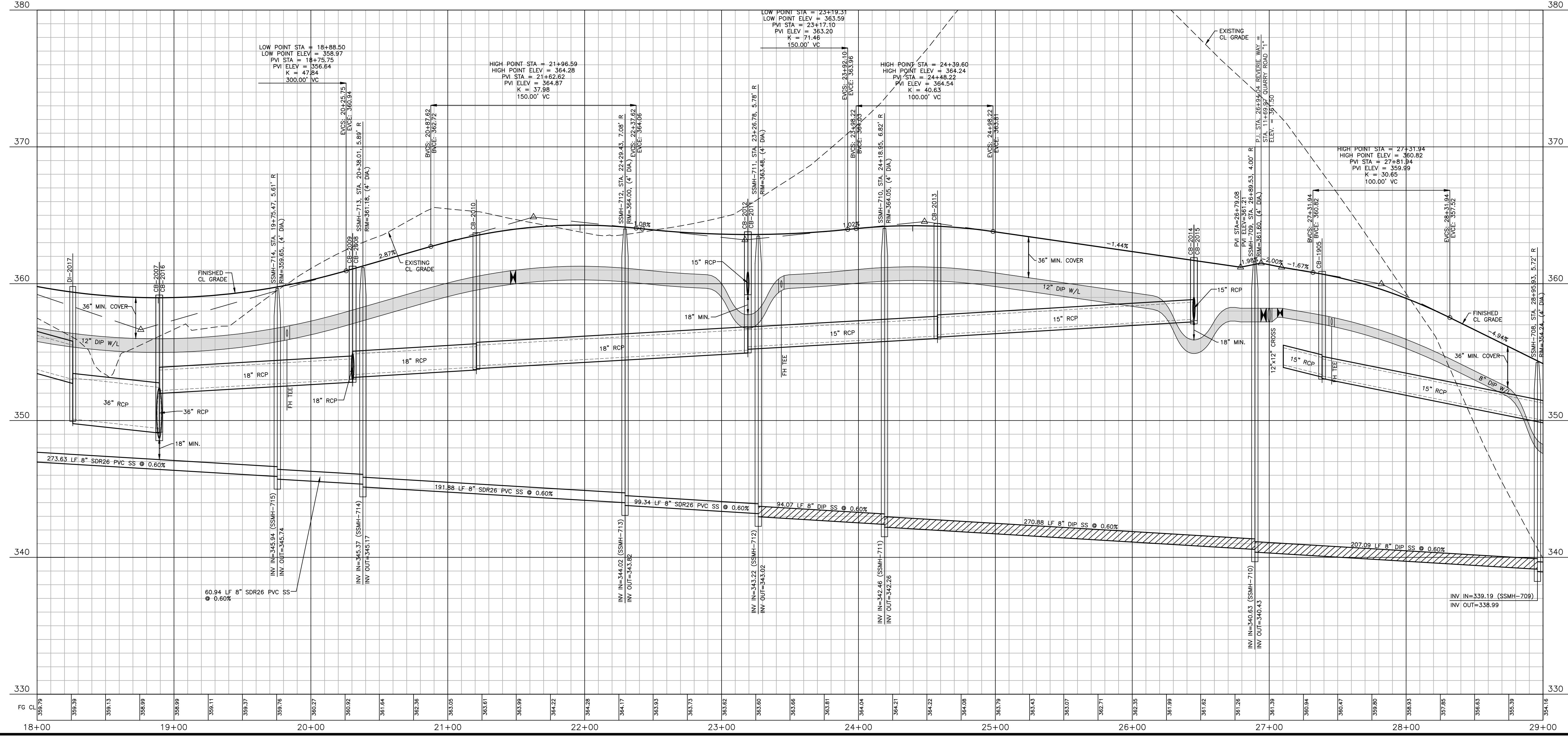
**OVERALL UTILITY PLAN
C4.00**

M:\Projects\AWH\AWH-20000\CD\Production\Engineering\CD PKG 3\Current Drawing\AWH20000-CD-PKG-03-AOU1.dwg, 12/13/2023 10:20:28 AM, Tommy Dobson



CB-2007 STA. 18+89.25 T/C=359.17 INV IN=348.77 (CB-2016) INV IN=352.19 (CB-2008) INV OUT=348.67	CB-1905 STA. 27+38.64 T/C=360.90 INV IN=353.36 (CB-1906) INV OUT=353.26
CB-2008 STA. 20+30.51 T/C=361.28 INV IN=353.11 (CB-2009) INV OUT=353.01	CB-2009 STA. 20+30.51 T/C=363.73 INV IN=353.36 (CB-2010) INV OUT=353.26
CB-2010 STA. 21+20.91 T/C=363.73 INV IN=354.00 (CB-2011) INV OUT=353.90	CB-2011 STA. 23+19.17 T/C=363.79 INV IN=359.29 (CB-2012) INV OUT=355.14
CB-2012 STA. 23+19.17 T/C=363.79 INV IN=355.39 (CB-2015) INV OUT=359.54	CB-2013 STA. 24+57.69 T/C=364.40 INV IN=356.28 (CB-2014) INV OUT=356.18
CB-2014 STA. 26+45.00 T/C=361.90 INV IN=357.50 (CB-2015) INV OUT=357.40	CB-2015 STA. 26+45.08 T/C=361.90 INV IN=357.50 INV OUT=357.65
CB-2016 STA. 18+89.25 T/C=359.17 INV IN=349.42 (DI-2017) INV OUT=349.32	

REVERIE WAY



Please explore opportunities to change the sanitary design so that sewer does not have to be excessively deep within Reverie Way.

MH's must be 5' dia if installation depth is greater than 12'.

FINAL DRAWING - NOT RELEASED FOR CONSTRUCTION

M:\Projects\AWH\AWH-20000\Production\Drawings\CD-Pkg-3\Current Drawings\AWH20000-CD-Pkg-3-1.dwg, 12/13/2023 10:50:37 AM, Tommy Dabot

The John R. McAdams Company, Inc.
2905 Meridian Parkway
Durham, NC 27713

phone 919. 361. 5000
fax 919. 361. 2269
license number: C-0293, C-187

www.mcadamsco.com

CLIENT
ASHTON RALEIGH RESIDENTIAL, LLC.
900 RIDGEMOUNT DRIVE, SUITE 335
RALEIGH, NORTH CAROLINA 27609
PHONE: 919. 422. 7663
CONTACT: BOB MISHLER

ASHTON WOODS

REVISIONS

NO.	DATE



THE POINT - PHASES 8, AND 14

CONSTRUCTION DRAWINGS - PACKAGE 3

TOWN OF ROLESVILLE, WAKE FOREST TOWNSHIP,
WAKE COUNTY, NORTH CAROLINA

PLAN INFORMATION

PROJECT NO.	AWH-20000
FILENAME	AWH20000-CD-Pkg-03-P
CHECKED BY	WTO
DRAWN BY	TKD
SCALE	1"=40'/1"=4'
DATE	12. 13. 2023

PLAN AND PROFILE
REVERIE WAY, STA. 18+00 THRU STA. 29+00

C5.01

CD XX-XX

CB-1903
STA. 29+03.00
T/C=354.21
INV IN=349.96 (CB-1905)
INV OUT=349.56

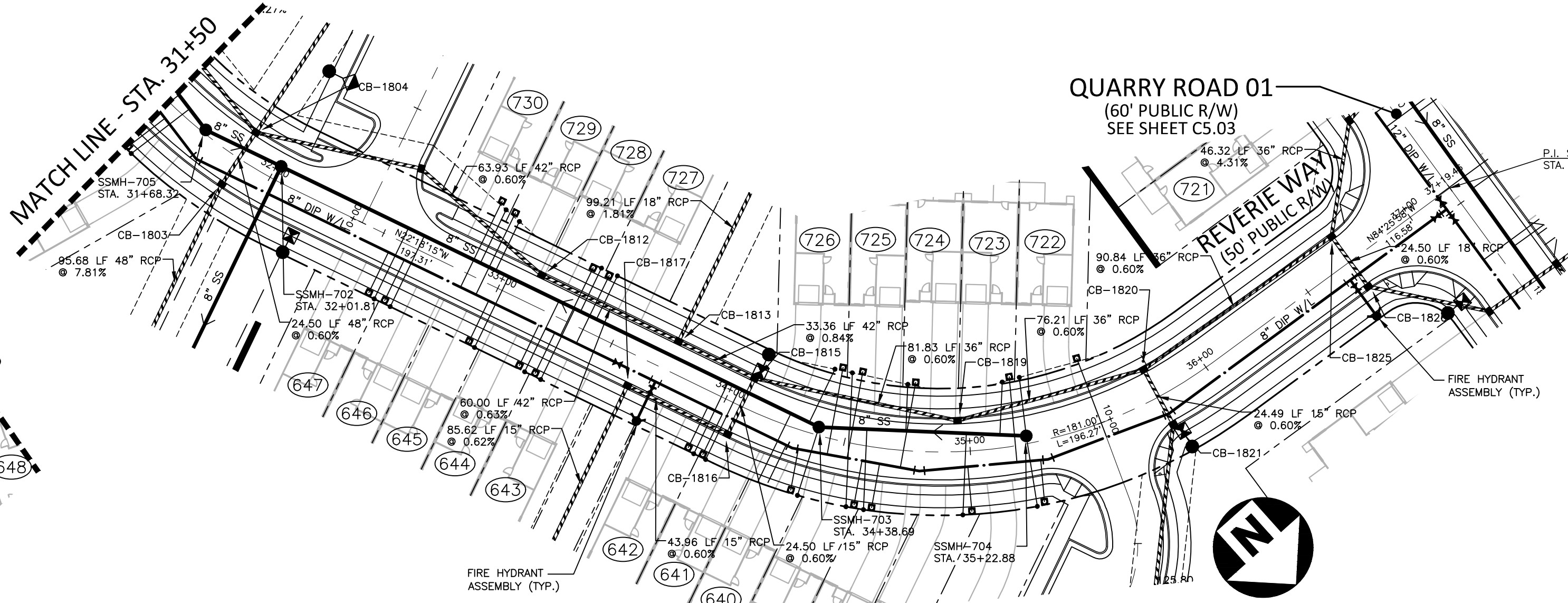
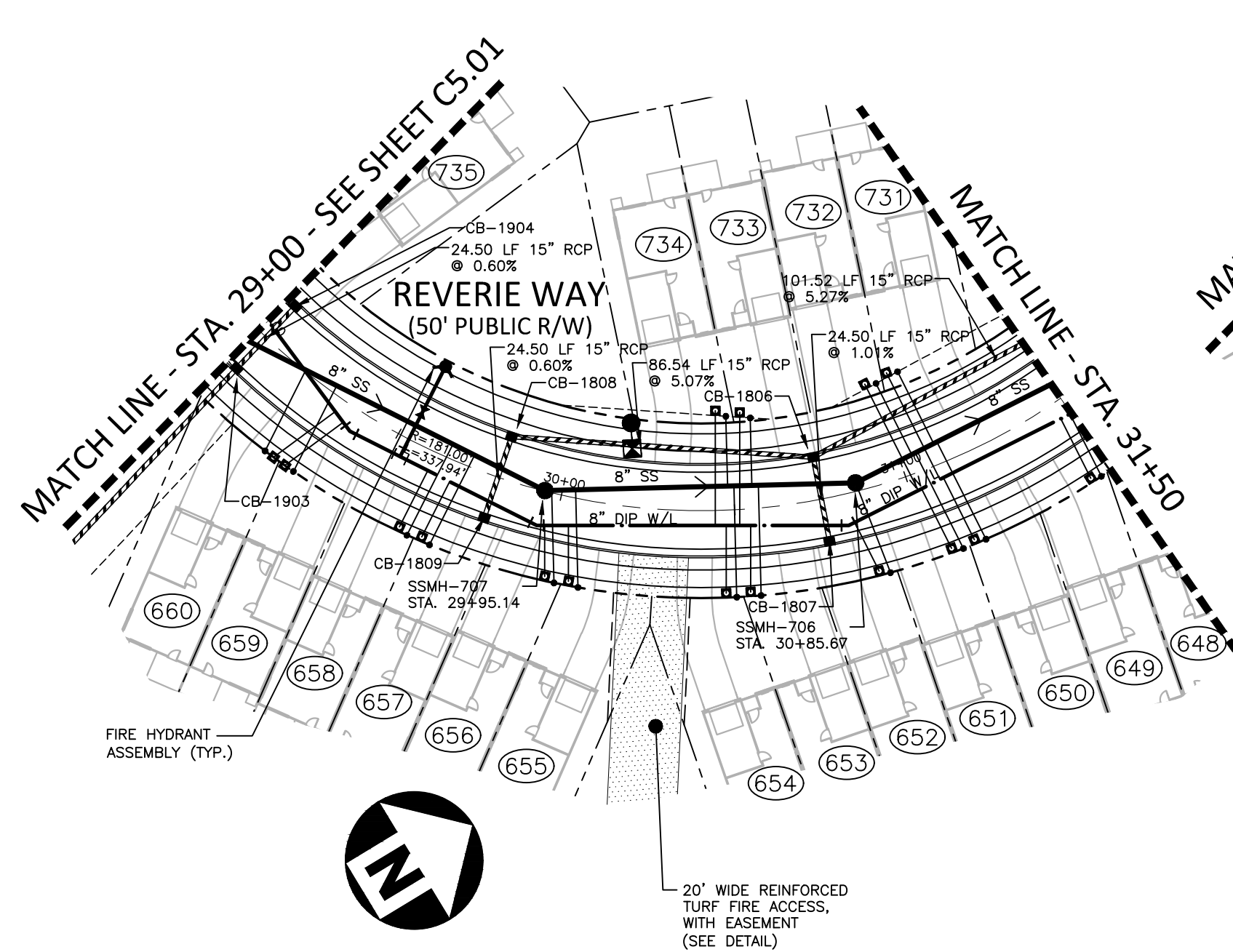
CB-1904
STA. 29+03.00
T/C=354.21
INV OUT=349.96

CB-1806
STA. 30+74.99
T/C=345.72
STA. 30+75.00
T/C=345.72
INV IN=341.22 (CB-1807)
INV IN=341.47 (CB-1808)
INV OUT=341.37

CB-1807
STA. 30+75.00
T/C=345.72
INV IN=341.22 (CB-1807)
INV IN=341.47 (CB-1808)
INV OUT=341.37

CB-1808
STA. 29+81.12
T/C=350.36
INV IN=345.96 (CB-1809)
INV IN=345.96

CB-1809
STA. 29+81.13
T/C=350.36
INV IN=346.11



CB-1803
STA. 31+85.59
T/C=340.27
INV IN=317.89 (CB-1804)
INV OUT=317.57

CB-1804
STA. 31+85.59
T/C=340.27
INV IN=317.89 (CB-1804)
INV OUT=317.57

CB-1816
STA. 34+62.82
T/C=333.62
INV IN=329.29 (CB-1817)
INV OUT=329.19

CB-1817
STA. 34+62.82
T/C=333.62
INV IN=329.29 (CB-1817)
INV OUT=329.19

CB-1818
STA. 34+95.42
T/C=334.74
INV IN=321.07 (CB-1820)
INV OUT=320.97

CB-1820
STA. 34+95.42
T/C=334.74
INV IN=321.07 (CB-1820)
INV OUT=320.97

CB-1811
STA. 32+51.83
T/C=337.97
INV IN=318.84 (CB-1812)
INV OUT=321.53

CB-1812
STA. 32+51.83
T/C=337.97
INV IN=318.84 (CB-1812)
INV OUT=321.53

CB-1821
STA. 35+77.88
T/C=337.50
INV IN=326.42 (CB-1822)
INV OUT=326.32

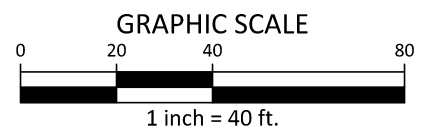
CB-1822
STA. 35+77.88
T/C=337.50
INV IN=326.42 (CB-1822)
INV OUT=326.32

CB-1825
STA. 36+70.46
T/C=340.36
INV IN=319.32 (CB-1813)
INV OUT=319.22

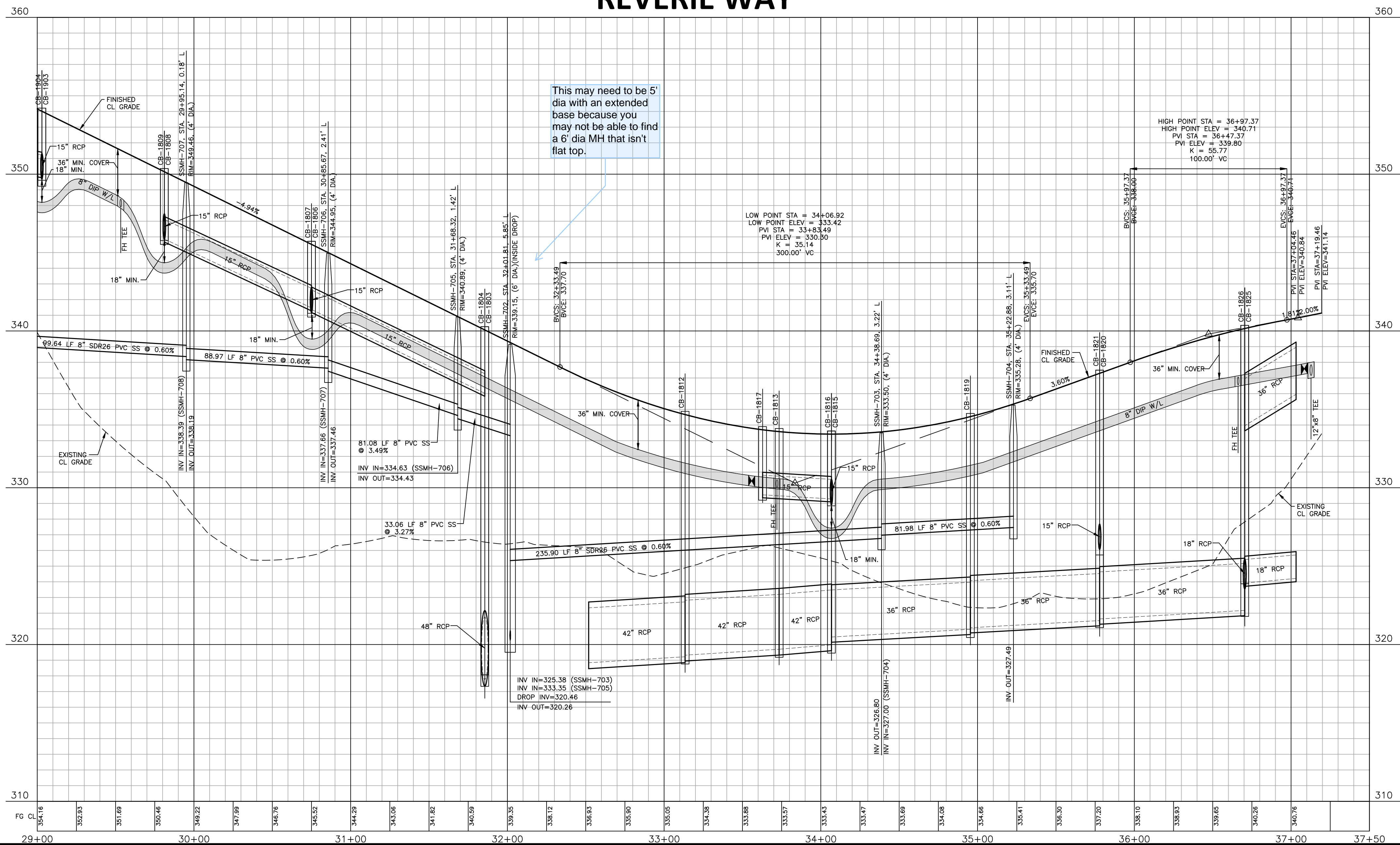
CB-1826
STA. 36+70.46
T/C=340.36
INV IN=319.32 (CB-1813)
INV OUT=319.22

CB-1813
STA. 33+73.39
T/C=333.78
INV IN=319.70 (CB-1815)
INV IN=328.00 (DI-1814)
INV OUT=319.70

CB-1815
STA. 34+06.77
T/C=333.52
INV IN=320.48 (CB-1819)
INV IN=320.48 (CB-1819)
INV OUT=319.98



REVERIE WAY



M:\Projects\AWH\20000\AWH20000\Production\Engineering\CD Pkg 3\Current Drawings\AWH20000-CD-Pkg-03-P1.dwg, 12/13/2023 10:53:24 AM, Tommy Dabot

FINAL DRAWING - NOT RELEASED FOR CONSTRUCTION



The John R. McAdams Company, Inc.
2905 Meridian Parkway
Durham, NC 27713

phone 919. 361. 5000
fax 919. 361. 2269
license number: C-0293, C-187

www.mcadamsco.com

CLIENT
ASHTON RALEIGH RESIDENTIAL, LLC.
900 RIDGEMOUNT DRIVE, SUITE 335
RALEIGH, NORTH CAROLINA 27609
PHONE: 919. 422. 7663
CONTACT: BOB MISHLER

ASHTON WOODS

REVISIONS

NO.	DATE



THE POINT - PHASES 8, AND 14
CONSTRUCTION DRAWINGS - PACKAGE 3
TOWN OF ROLESVILLE, WAKE FOREST TOWNSHIP,
WAKE COUNTY, NORTH CAROLINA

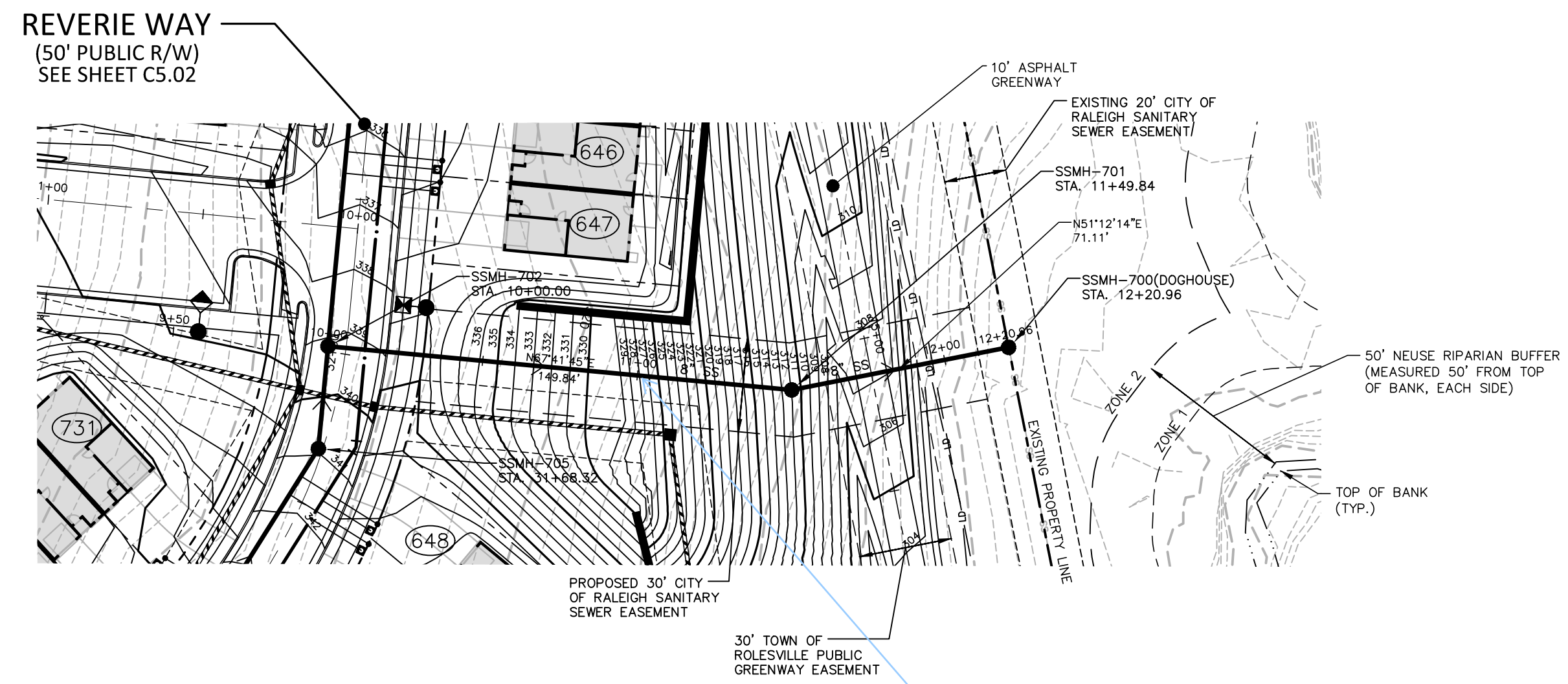
PLAN INFORMATION

PROJECT NO.	AWH-20000
FILENAME	AWH20000-CD-Pkg-03-P
CHECKED BY	WTO
DRAWN BY	TKD
SCALE	1"=40'/1"=4'
DATE	12.13.2023

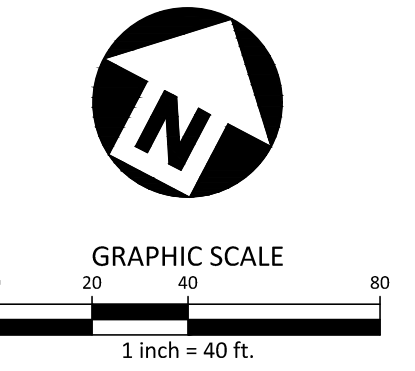
CD XX-XX

PLAN AND PROFILE
STREET "A", STA. 29+00 THRU STA. 37+19.46

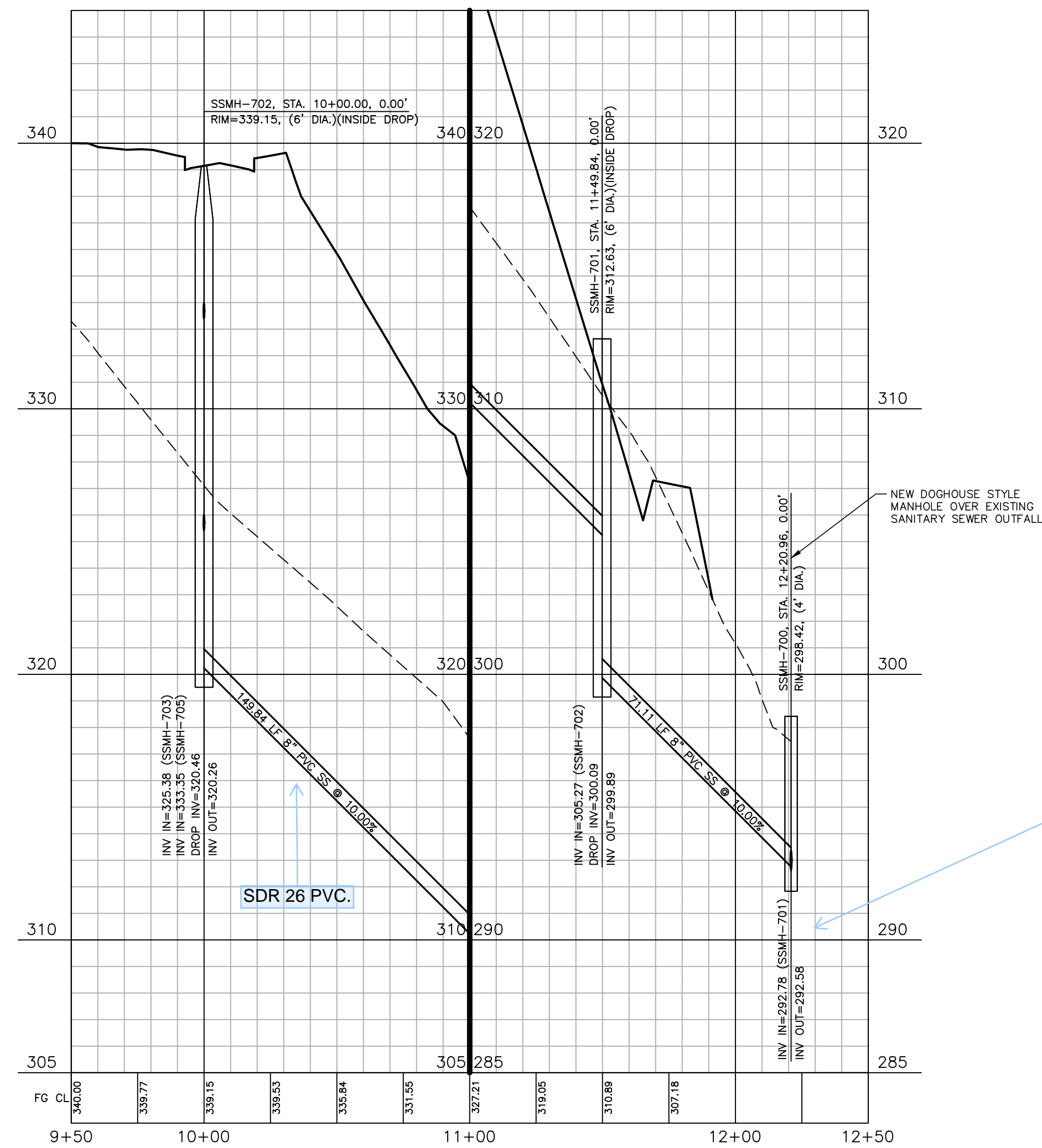
C5.02



The slope within this easement appears to exceed 3:1.



SS O/F "K"



The slope within the pipe should be less than 10%.

M:\Projects\AWH\AWH-20000\04-Production\Engineering\CD PKG 3\Current Drawings\AWH20000-CD-Pkg-03-P2.dwg, 12/13/2023 11:06:13 AM, Tommy Dubot

FINAL DRAWING - NOT RELEASED FOR CONSTRUCTION



The John R. McAdams Company, Inc.
2905 Meridian Parkway
Durham, NC 27713

phone 919. 361. 5000
fax 919. 361. 2269
license number: C-0293, C-187

www.mcadamsco.com

CLIENT
ASHTON RALEIGH RESIDENTIAL, LLC.
900 RIDGEFIELD DRIVE, SUITE 335
RALEIGH, NORTH CAROLINA 27609
PHONE: 919. 422. 7663
CONTACT: BOB MISHLER

ASHTON WOODS.

REVISIONS

NO.	DATE



THE POINT - PHASES 8, AND 14
CONSTRUCTION DRAWINGS - PACKAGE 3
TOWN OF ROLESVILLE, WAKE FOREST TOWNSHIP,
WAKE COUNTY, NORTH CAROLINA

PLAN INFORMATION

PROJECT NO.	AWH-20000
FILENAME	AWH20000-CD-Pkg-03-P2
CHECKED BY	WTO
DRAWN BY	TKD
SCALE	1"=40'/1"=4'
DATE	12.13.2023

CD XX-XX

PLAN AND PROFILE
SS O/F "K", STA. 10+00 THRU STA. 12+20.96

C5.06