

SHEET INDEX			ISSUED ○ REVISED ●			DESCRIPTION		
ToR PERMIT REVIEW	#	TITLE	DATE	DATE	DATE	DATE	DATE	DATE
CIVIL								
CID	SDP	C0.01	COVER	●	○			
CID	SDP	C0.02	SHEET INDEX	●	○	●		
	SDP	C0.03	LEGEND AND NOTES	●	○			
CID	SDP	C0.04	EXISTING CONDITIONS AND DEMOLITION PLAN	●	○			
CID	SDP	C1.00	EROSION CONTROL NOTES	●	○			
CID	SDP	C1.01	EROSION CONTROL DETAILS	●	○			
	SDP	C1.10	EROSION CONTROL PLAN - PHASE 1	●	○			
CID		C1.11	EROSION CONTROL PLAN - PHASE 1	●	○			
	SDP	C1.20	EROSION CONTROL PLAN - PHASE 2	●	○			
CID		C1.21	EROSION CONTROL PLAN - PHASE 2	●	○			
	SDP	C1.30	EROSION CONTROL PLAN - PHASE 3	●	○			
CID		C1.31	EROSION CONTROL PLAN - PHASE 3	●	○			
	SDP	C2.00	SITE PLAN - OVERALL	○	○			
	SDP	C2.10	SITE PLAN 'A'	○	○			
	SDP	C2.20	SITE PLAN 'B'	○	○			
	SDP	C2.30	TEMPORARY SITE ACCESS PLAN	○	○			
	SDP	C2.31	TRUCK ACCESS PLAN	○	○			
	SDP	C2.32	DRIVE-THRU ACCESS PLAN	○	○			
CID		C2.40	ROADWAY - LAYOUT PLAN	○	○			
CID		C2.41	ROADWAY - STRIPING AND SIGNAGE PLAN	○	○			
	SDP	C3.00	UTILITY PLAN - OVERALL	●	○	●		
	SDP	C3.10	UTILITY PLAN 'A'	●	○	●		
	SDP	C3.20	UTILITY PLAN 'B'	●	○	●		
CID		C3.30	PLAN-PROFILE - SANITARY SEWER RELOCATION	●	○	●		
	SDP	C3.31	PLAN-PROFILE - PRIVATE SEWER - CORNER SHOPS	●	○	●		
	SDP	C3.32	PLAN-PROFILE - PRIVATE SEWER - PUBLIX	●	○	●		
	SDP	C3.33	PLAN-PROFILE - PRIVATE SEWER - SHOP BLDG	●	○	●		
	SDP	C4.00	GRADING & DRAINAGE PLAN - OVERALL	●	○			
	SDP	C4.10	GRADING & DRAINAGE PLAN 'A'	●	○			
	SDP	C4.11	GRADING & DRAINAGE PLAN 'A' - ENLARGEMENT	○	○			
	SDP	C4.20	GRADING & DRAINAGE PLAN 'B'	●	○			
	SDP	C4.21	GRADING & DRAINAGE PLAN - OUTPARCELS	○	○			
	SDP	C4.22	PLAN-PROFILE - RETAINING WALL - CORNER SHOPS	○	○			
	SDP	C4.31	SITE ACCESSIBILITY PLAN 'A'	○	○			
	SDP	C4.32	SITE ACCESSIBILITY PLAN 'B'	○	○			
	SDP	C4.33	SITE ACCESSIBILITY PLAN 'C'	○	○			
CID		C5.00	PLAN-PROFILE - VIRGINIA WATER DRIVE	○	○			
CID		C5.01	PLAN-PROFILE - WALLBROOK DRIVE	○	○	●		
CID		C5.02	PLAN-PROFILE - WALLBROOK DRIVE	○	○			
CID		C5.10	GRADING PLAN - LOT 5	○	○	●		
CID		C6.00	SCM DETAIL - PLAN	●	○			
CID		C6.01	SCM PLANTING PLAN	○	○			
CID		C6.10	SCM DETAILS	○	○			
CID		C6.20	SCM SECTION & RETAINING WALL PLAN-PROFILE	○	○			
CID	SDP	C7.01	MISC. DETAILS	○	○			
CID	SDP	C7.02	MISC. DETAILS	○	○			
CID	SDP	C7.03	MISC. DETAILS	○	○			
CID	SDP	C7.04	MISC. DETAILS	○	○			
CID	SDP	C7.05	MISC. DETAILS	○	○			
CID	SDP	C7.06	MISC. DETAILS	●	○			

7	22-SEP-23	REVISED PER REVIEW COMMENTS - SDP SUBMITTAL #3
6	18-AUG-23	REVISED PER REVIEW COMMENTS - SDP SUBMITTAL #2
5	19-JUL-23	CART CORRAL DETAIL REVISED
4	29-JUN-23	REVISED PER REVIEW COMMENTS
3	23-JUN-23	REVISED PER REVIEW COMMENTS - SDP PERMIT REVIEW SUBMITTAL #1
2	24-APR-23	REVISED PER REVIEW COMMENTS
1	10-FEB-23	SHIFTED BUILDING LOCATION PER OWNER REQUEST - CID PERMIT REVIEW SUBMITTAL #1
#	DATE	DESCRIPTION

SEPARATE REVISION/SUBMITTAL HISTORY FOR SDP 23-05 (ARK DWG No. D-1219-CD) AND CID 23-01 (ARK DWG No. D-1219-RDY) PROVIDED FOR REFERENCE

4A	12-OCT-23	REVISED PER REVIEW COMMENTS
4	20-SEP-23	REVISED PER REVIEW COMMENTS - CID SUBMITTAL #4
3	30-AUG-23	REVISED PER REVIEW COMMENTS - CID SUBMITTAL #3
2	21-JUN-23	REVISED PER REVIEW COMMENTS - CID SUBMITTAL #2
1	1-FEB-23	ISSUED FOR INITIAL REVIEW
#	DATE	DESCRIPTION

SHEET INDEX			ISSUED ○ REVISED ●			DESCRIPTION		
ToR PERMIT REVIEW	#	TITLE	DATE	DATE	DATE	DATE	DATE	DATE
LANDSCAPING								
SDP	L0.00	DRAWING INDEX & GENERAL NOTES	○	○				
SDP	L2.00	SITE PLAN - OVERALL	○	○				
SDP	L2.11	SITE PLAN - NORTHEAST	○	○				
SDP	L2.14	SITE PLAN - BLDG 4	○	○				
SDP	L3.10	MATERIAL & FURNISHING SCHEDULE	○	○				
SDP	L3.11	MATERIAL & FURNISHING PLAN - NORTHEAST	○	○				
SDP	L3.13	MATERIAL & FURNISHING PLAN - BLDG 4	○	○				
SDP	L3.90	SITE DETAILS	○	○				
SDP	L3.91	SITE DETAILS	○	○				
SDP	L3.92	SITE DETAILS	○	○				
SDP	L3.93	SITE DETAILS	○	○				
SDP	L3.94	SITE DETAILS	○	○				
SDP	L4.11	LAYOUT PLAN - NORTHEAST	○	○				
SDP	L4.14	LAYOUT PLAN - BLDG 4	○	○				
SDP	L7.00	PLANTING PLAN - OVERALL	○	○				
SDP	L7.01	PLANTING SCHEDULE - OVERALL	○	○				
SDP	L7.10	PLANTING PLAN	○	○				
SDP	L7.11	PLANTING PLAN	○	○				
SDP	L7.12	PLANTING PLAN	○	○				
SDP	L7.13	PLANTING PLAN	○	○				
SDP	L7.14	PLANTING PLAN	○	○				
SDP	L7.91	PLANTING DETAILS	○	○				
SDP	L7.92	PLANTING DETAILS	○	○				
SDP	L9.00	SITE LIGHTING - OVERALL	○	○				
SDP	L9.11	SITE LIGHTING - NORTHEAST	○	○				
SDP	L9.14	SITE LIGHTING - BLDG 4	○	○				
SDP	L9.91	SITE LIGHTING - DETAILS	○	○				
SDP	L9.92	SITE LIGHTING - DETAILS	○	○				
SDP	IR1.10	IRRIGATION - SHEET LAYOUT PLAN	○	○				
SDP	IR1.11	IRRIGATION - SCHEDULES AND NOTES	○	○				
SDP	IR1.12	ENHANCED IRRIGATION PLAN - NORTHWEST	○	○				
SDP	IR1.13	ENHANCED IRRIGATION PLAN - NORTHEAST	○	○				
SDP	IR1.14	ENHANCED IRRIGATION PLAN - SOUTHWEST	○	○				
SDP	IR1.15	ENHANCED IRRIGATION PLAN - SOUTHEAST	○	○				
SDP	IR1.16	ENHANCED IRRIGATION PLAN - SOUTHWEST	○	○				
SDP	IR1.17	IRRIGATION DETAILS	○	○				
SDP	IR1.18	IRRIGATION DETAILS	○	○				
SDP	S0.00	STRUCTURAL - GENERAL NOTES, ABBREVIATIONS, AND LEGEND	○	○				
SDP	S0.01	STRUCTURAL - STATEMENT OF SPECIAL INSPECTIONS	○	○				
SDP	S1.00	STRUCTURAL - FOUNDATION PLAN	○	○				
SDP	S3.03	STRUCTURAL - FOUNDATION DETAILS	○	○				
SDP	S3.12	STRUCTURAL - FOUNDATION DETAILS	○	○				
REFERENCE								
REF		Survey - Johnson, Mirmiran & Thompson (3 Sheets)	○	○				
REF		Survey - Cawthorne, Moss & Panciera, PC Professional Land Surveyors	○	○				
REF		Retaining Wall Design - NV5 Engineers and Consultants, Inc. (13 Sheets)	○	○				
REF		Concrete Retaining Wall Design - NV5 Engineers and Consultants, Inc. (3 Sheets)	○	○				
REF		Site Lighting Plan - Hiscutt & Associates / Savant Engineering, PLLC (4 Sheets)	○	○				
REF		Dumpster Enclosure & Details - Hiscutt & Associates (2 Sheets)	○	○				
REF		Building Elevations - Hiscutt & Associates (5 Sheets)	○	○				
REF		Tree Preservation Plan - PR-21-04 REVISED (1 Sheet)	○	○				

CITY OF RALEIGH - PLANS AUTHORIZED FOR CONSTRUCTION

Electronic Approval: This approval is being issued electronically. This approval is valid only upon the signature of a City of Raleigh Review Officer below. The City will retain a copy of the approved plans. Any work authorized by this approval must proceed in accordance with the plans kept on file with the City. This electronic approval may not be edited once issued. Any modification to this approval once issued will invalidate this approval.

City of Raleigh Development Approval \_\_\_\_\_

Raleigh Water Review Officer \_\_\_\_\_



**SHEET INDEX**  
**PUBLIX AT WALLBROOK AND WALLBROOK ROADWAY IMPROVEMENTS**  
 Town of Rolesville Project No. SDP 23-05 & CID 23-01  
 Rolesville, Wake County, North Carolina  
 S Main St. / US 401 and Virginia Water Drive

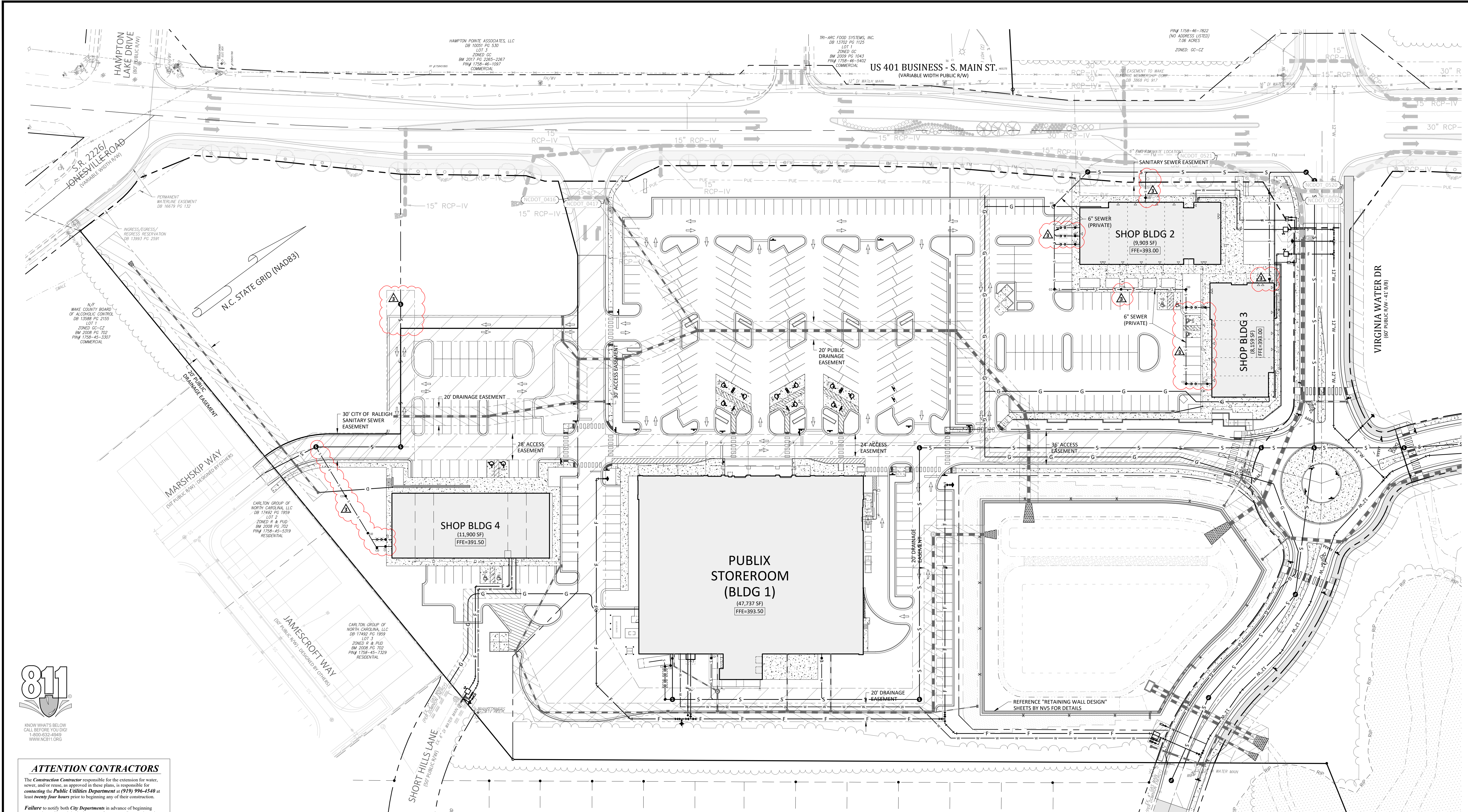
NC License: P-1199  
**ARK CONSULTING GROUP PLLC**  
 ENGINEERS & PLANNERS  
 2755-B Charles Blvd  
 Raleigh, NC 27608  
 (919) 558-0888  
 www.arkconsultinggroup.com

2/20/2024

Project Manager:	BCF
Drawn By:	DLC
Checked By:	STA
Project Number:	21089 / 22012
Drawing Number:	D-1219-CD
Date:	October 26, 2023

**C0.02**  
SDP

3 20-MAR-24 REVISED PER OWNER/TENANT COMMENTS  
 2 14-NOV-23 ISSUED FOR CONSTRUCTION  
 1 16-OCT-23 SDP 23-05 / CID 23-01 COMBINED REVIEW  
 # DATE DESCRIPTION



KNOW WHAT'S BELOW  
CALL BEFORE YOU DIG!  
800-433-4848  
WWW.NC811.ORG

**ATTENTION CONTRACTORS**

The Construction Contractor responsible for the extension for water, sewer, and/or gas, as approved in these plans, is responsible for contacting the Public Utilities Department at (919) 996-4540 at least twenty-four hours prior to beginning any of their construction.

Failure to notify both City Departments in advance of beginning construction, will result in the issuance of monetary fines, and require reinstallation of any water or sewer facilities not inspected as a result of this notification failure.

Failure to call for inspection, install a Downstream Plug, have Permitted Plans on the Jobsite, or any other Violation of City of Raleigh Standards will result in a Fine and Possible Exclusion from future work in the City of Raleigh.

**SITE PERMITTING APPROVAL**

Water and Sewer Permits (if applicable)  
The City of Raleigh consents to the connection and extension of the City's Public Sewer System as shown on this plan. The material and Construction methods used for this project shall conform to the standards and specifications of the City's Public Utilities Handbook. City of Raleigh Public Utilities Department Permit # S-5381

The City of Raleigh consents to the connection and extension of the City's Public Water System as shown on this plan. The material and Construction methods used for this project shall conform to the standards and specifications of the City's Public Utilities Handbook. City of Raleigh Public Utilities Department Permit # W-4074

The City of Raleigh consents to the connection to its public sewer system and extensions of the private sewer collection system as shown on this plan. The material and construction methods used for this project shall conform to the standards and specifications of the City's Public Utilities Handbook. City of Raleigh Public Utilities Department Permit # S-5380(P)

CITY OF RALEIGH - PLANS AUTHORIZED FOR CONSTRUCTION

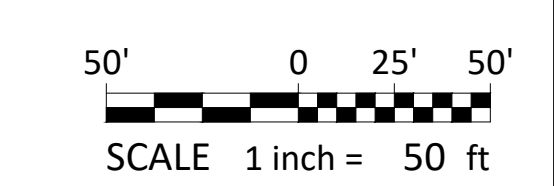
Plans for the proposed use have been reviewed for general compliance with applicable codes. This limited review, and authorization for construction is not to be considered to represent total compliance with all legal requirements for development and construction. The property owner, design consultants, and contractors are each responsible for compliance with all applicable City, State and Federal laws. This specific authorization below is not a permit, nor shall it be construed to permit any violation of City, State or Federal Law. All Construction must be in accordance with all Local, State, and Federal Rules and Regulations.

Electronic Approval: This approval is being issued electronically. This approval is valid only upon the signature of a City of Raleigh Review Official below. The City will retain a copy of the approved plans. Any work authorized by this approval must proceed in accordance with the plans kept on file with the City. This electronic approval may not be edited once issued. Any modification to this approval once issued will invalidate this approval.

City of Raleigh Development Approval  
City of Raleigh Review Official

**Utility Notes:**

- CONTRACTOR SHALL CONTACT NORTH CAROLINA ONE-CALL CENTER, INC. (NC ONE-CALL) AT 811 TO HAVE ALL UNDERGROUND UTILITIES LOCATED AT LEAST 72 HOURS PRIOR TO EXCAVATING OR TRENCHING.
- CONTRACTOR SHALL NOTIFY THE TOWN OF ROLESVILLE AND THE NC DEPARTMENT OF TRANSPORTATION, 72 HOURS PRIOR TO CLOSURE OF ROADWAY AND CUTTING PAVEMENT IN ROADWAY RIGHT-OF-WAY.
- ALL REQUIRED IMPROVEMENTS SHALL CONFORM TO THE CITY OF RALEIGH PUBLIC UTILITIES HANDBOOK, EFFECTIVE JANUARY 21, 2014, UPDATED OCTOBER 16, 2023.
- THE CONTRACTOR SHALL FAMILIARIZE THEMSELVES WITH CITY OF RALEIGH REQUIREMENTS AND IS RESPONSIBLE FOR ALL COORDINATION REGARDING UTILITY INSTALLATION AS IDENTIFIED OR REQUIRED FOR THE PROJECT.
- ALL NEW UTILITIES, INCLUDING ELECTRIC, TELEPHONE, CABLE TV SHALL BE INSTALLED UNDERGROUND.
- THE SITE UTILITY CONTRACTOR SHALL INSTALL DOMESTIC WATER SERVICE PIPING TO WITHIN 5' OF THE BUILDING ENTRY POINT.
- THE SITE UTILITY CONTRACTOR SHALL INSTALL THE FIRE SPRINKLER SERVICE PIPING TO TERMINATE IN THE FIRE RISER ROOM, TERMINATING 1' ABOVE FFE WITH A BLIND FLANGE CONNECTION.
- THE SITE UTILITY CONTRACTOR'S PRICE FOR WATER SERVICE SHALL INCLUDE ALL FEES AND APPURTENANCES REQUIRED BY THE UTILITY TO PROVIDE A COMPLETE WORKING SERVICE.
- THE SITE UTILITY CONTRACTOR SHALL INSTALL SANITARY SEWER SERVICE PIPING TO THE CLEANOUT WITHIN 5' OF THE BUILDING ENTRY POINT.
- NO SEWER SERVICE SHALL BE PROVIDED WITHIN THIS PROJECT UNTIL ALL MAINS HAVE BEEN INSTALLED AND ACCEPTED FOR MAINTENANCE BY THE CITY OF RALEIGH.
- THE SITE UTILITY CONTRACTOR SHALL INSTALL STORM DRAINAGE ROOF LEADER PIPING TO WITHIN 5' OF THE CONNECTION POINT AT THE BUILDING.
- THE SITE UTILITY CONTRACTOR SHALL INSTALL ALL STORM AND SANITARY SEWER COMPONENTS WHICH FUNCTION BY GRAVITY PRIOR TO THE INSTALLATION OF ALL OTHER UTILITIES.
- CONTRACTOR SHALL SUBMIT SHOP DRAWINGS TO ENGINEER FOR MATERIALS TO BE USED IN THE CONSTRUCTION OF UTILITY IMPROVEMENTS. SHOP DRAWINGS SHALL BE REVIEWED AND APPROVED BY THE ENGINEER PRIOR TO ORDERING MATERIALS.
- COORDINATE WITH MEP PLANS FOR ELECTRICAL SERVICE INFORMATION.
- THE SITE UTILITY CONTRACTOR IS RESPONSIBLE FOR COORDINATION OF SITE PLAN DOCUMENTS AND ARCHITECTURAL PLANS FOR EXACT BUILDING UTILITY CONNECTION LOCATIONS, GREASE TRAP REQUIREMENTS / DETAILS, DOOR ACCESS AND EXTERIOR GRADING.
- LOCATION OF ALL EXISTING AND PROPOSED UTILITIES ARE APPROXIMATE AND MUST BE CONFIRMED INDEPENDENTLY WITH UTILITY OWNERS PRIOR TO COMMENCEMENT OF ANY CONSTRUCTION OR EXCAVATION. UTILITY SERVICE CONNECTION POINTS SHALL BE CONFIRMED INDEPENDENTLY BY THE CONTRACTOR IN THE FIELD PRIOR TO THE COMMENCEMENT OF CONSTRUCTION. DISCREPANCIES SHALL BE REPORTED IMMEDIATELY IN WRITING TO ENGINEER. CONSTRUCTION SHALL COMMENCE BEGINNING AT THE LOWEST INVERT (POINT OF CONNECTION) AND PROGRESS UPSTREAM. PROPOSED INTERFACE POINTS (CROSSINGS) WITH EXISTING UNDERGROUND UTILITIES SHALL BE FIELD VERIFIED BY TEST PIT PRIOR TO COMMENCEMENT OF CONSTRUCTION.
- ALL UTILITIES AND SERVICES INCLUDING BUT NOT LIMITED TO GAS, WATER, ELECTRIC, SANITARY AND STORM SEWER, TELEPHONE, CABLE, FIBER OPTIC CABLE WITHIN THE LIMITS OF DISTURBANCE SHALL BE VERTICALLY AND HORIZONTALLY LOCATED. THE CONTRACTOR SHALL COMPLY WITH THE REQUIREMENTS OF THE APPLICABLE UTILITY NOTIFICATION SYSTEM TO LOCATE ALL THE UNDERGROUND UTILITIES. THE CONTRACTOR IS RESPONSIBLE FOR REPAIRS OF DAMAGE TO ANY EXISTING UTILITIES DURING CONSTRUCTION AT NO COST TO THE OWNER.
- IT IS THE RESPONSIBILITY OF THE CONTRACTOR TO REVIEW ALL OF THE DRAWINGS AND SPECIFICATIONS ASSOCIATED WITH THE PROJECT WORK SCOPE PRIOR TO THE INITIATION OF CONSTRUCTION. SHOULD THE CONTRACTOR FIND A CONFLICT WITH THE DOCUMENTS RELATIVE TO THE SPECIFICATIONS OR THE RELATIVE CODES, IT IS THE CONTRACTOR'S RESPONSIBILITY TO NOTIFY THE PROJECT ENGINEER OF RECORD IN WRITING PRIOR TO COMMENCING CONSTRUCTION. FAILURE BY THE CONTRACTOR TO NOTIFY THE PROJECT ENGINEER SHALL CONSTITUTE ACCEPTANCE OF FULL RESPONSIBILITY BY THE CONTRACTOR TO COMPLETE THE SCOPE OF WORK AS DEFINED BY THE DRAWINGS AND IN FULL COMPLIANCE WITH LOCAL AND STATE REGULATIONS AND CODES.
- THE SITE UTILITY CONTRACTOR SHALL FAMILIARIZE THEMSELVES WITH THE APPLICABLE UTILITY SERVICE PROVIDER REQUIREMENTS AND IS RESPONSIBLE FOR ALL COORDINATION REGARDING UTILITY DEMOLITION AS IDENTIFIED OR REQUIRED FOR THE PROJECT. THE SITE UTILITY CONTRACTOR SHALL PROVIDE THE OWNER WRITTEN NOTIFICATION THAT THE EXISTING UTILITIES AND SERVICES HAVE BEEN TERMINATED AND ABANDONED IN ACCORDANCE WITH JURISDICTION AND UTILITY COMPANY REQUIREMENTS.
- THE SITE UTILITY CONTRACTOR SHALL COORDINATE INSTALLATION OF UTILITIES / SERVICES WITH THE INDIVIDUAL COMPANIES, TO AVOID CONFLICTS, AND TO ENSURE PROPER DEPTHS ARE ACHIEVED. THE SITE UTILITY CONTRACTOR SHALL BE RESPONSIBLE FOR ENSURING THAT INSTALLATION OF ALL IMPROVEMENTS COMPLIES WITH UTILITY REQUIREMENTS HAVING JURISDICTION, AND SHALL BE RESPONSIBLE FOR COORDINATING THE UTILITY TIE-INS / CONNECTIONS PRIOR TO CONNECTING TO THE EXISTING UTILITY / SERVICE. WHERE CONFLICTS EXIST WITH THESE PLANS, OR WHERE ARCHITECTURAL PLAN UTILITY CONNECTION POINTS DIFFER, THE SITE UTILITY CONTRACTOR SHALL IMMEDIATELY NOTIFY THE GENERAL CONTRACTOR, PROJECT ARCHITECT, AND CIVIL ENGINEER PRIOR TO CONSTRUCTION COMMENCEMENT TO RESOLVE.
- THE SITE UTILITY CONTRACTOR IS RESPONSIBLE FOR COORDINATING WITH UTILITY PROVIDERS FOR THE RELOCATION / ABANDONMENT OF EXISTING UTILITIES AND INSTALLATION OF NEW UTILITY SERVICES AS WELL AS FEES ASSOCIATED WITH SUCH WORK.
- THE SITE UTILITY CONTRACTOR SHALL DEFINE AND LOCATE VERTICALLY AND HORIZONTALLY ALL ACTIVE UTILITY SERVICE SYSTEMS THAT ARE TO BE REMOVED. THE SITE UTILITY CONTRACTOR IS RESPONSIBLE TO PROTECT AND MAINTAIN ALL ACTIVE SYSTEMS THAT ARE NOT BEING REMOVED OR RELOCATED DURING SITE ACTIVITIES.



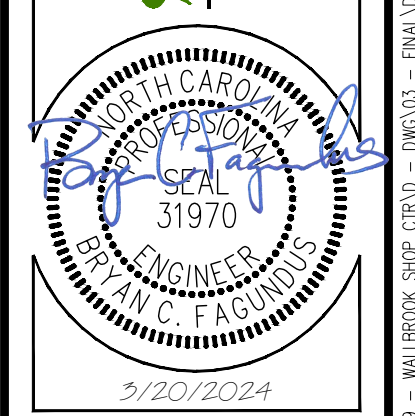
REVISIONS:

#	DATE	DESCRIPTION
1	12-06-23	SDP 23-05 / CID 23-01 COMBINED REVIEW
2	14-NOV-23	ISSUED FOR CONSTRUCTION
3	20-MAR-24	REVISED PER OWNER/FEMANENT COMMENTS



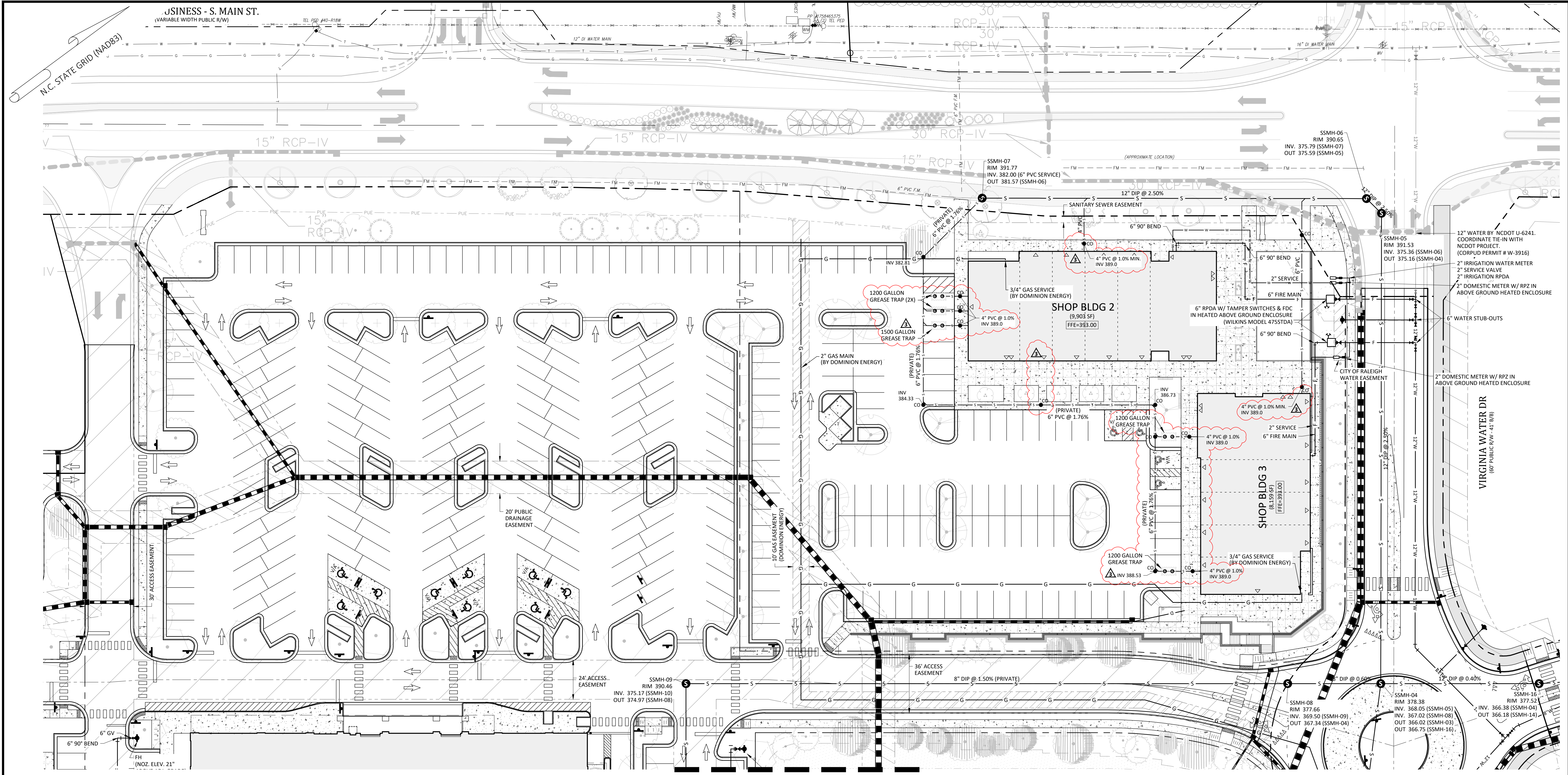
**UTILITY PLAN - OVERALL**  
**PUBLIX AT WALLBROOK AND WALLBROOK ROADWAY IMPROVEMENTS**  
 Town of Rolesville Project No. SDP 23-05 & CID 23-01  
 Rolesville, Wake County, North Carolina  
 S Main St. / US 401 and Virginia Water Drive

NC License: P-1109  
**ARK CONSULTING GROUP PLLC**  
 ENGINEERS & PLANNERS  
 2755-B Charles Blvd  
 Raleigh, NC 27608  
 (919) 558-0888  
 www.arkconsultinggroup.com



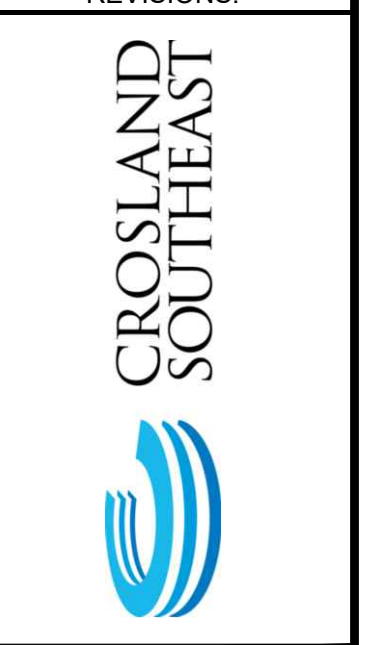
Project Manager: BCF  
 Drawn By: DLC  
 Checked By: STA  
 Project Number: 21089 / 22012  
 Drawing Number: D-1219-CD  
 Date: October 26, 2023

**C3.00**  
 SDP



REFERENCE LINE - SEE SHEET C3.20

#	DATE	DESCRIPTION
1	12-06-2023	SDP 23-05 / CID 23-01 COMBINED REVIEW
2	14-NOV-23	ISSUED FOR CONSTRUCTION
3	20-MAR-24	REVISED PER OWNER/TENANT COMMENTS



**UTILITY PLAN 'A'**  
**PUBLIX AT WALLBROOK AND WALLBROOK ROADWAY IMPROVEMENTS**  
 Town of Rolesville Project No. SDP 23-05 & CID 23-01  
 Rolesville, Wake County, North Carolina  
 S Main St. / US 401 and Virginia Water Drive



**SITE PERMITTING APPROVAL**

Water and Sewer Permits (if applicable)  
 The City of Raleigh consents to the connection and extension of the City's Public Sewer System as shown on this plan. The material and Construction methods used for this project shall conform to the standards and specifications of the City's Public Utilities Handbook. City of Raleigh Public Utilities Department Permit # S-5381

The City of Raleigh consents to the connection and extension of the City's Public Water System as shown on this plan. The material and Construction methods used for this project shall conform to the standards and specifications of the City's Public Utilities Handbook. City of Raleigh Public Utilities Department Permit # WJ-4074

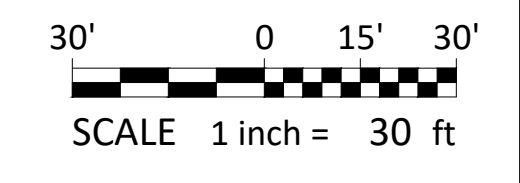
The City of Raleigh consents to the connection to its public sewer system and extensions of the private sewer collection system as shown on this plan. The material and construction methods used for this project shall conform to the standards and specifications of the City's Public Utilities Handbook. City of Raleigh Public Utilities Department Permit # S-5380(P)

**ATTENTION CONTRACTORS**

The Construction Contractor responsible for the extension for water, sewer, and/or reuse, as approved in these plans, is responsible for contacting the **Public Utilities Department at (919) 996-4540** at least **twenty-four hours** prior to beginning any of their construction.

**Failure** to notify both City Departments in advance of beginning construction will result in the issuance of **monetary fines**, and require reinstallation of any water or sewer facilities not inspected as a result of this notification failure.

**Failure** to call for Inspection, Install a Downstream Plug, have Permitted Plans on the Jobsite, or any other Violation of City of Raleigh Standards will result in a **Fine and Possible Exclusion** from future work in the City of Raleigh.

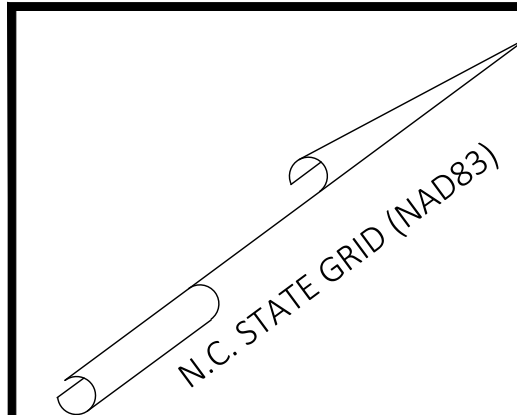
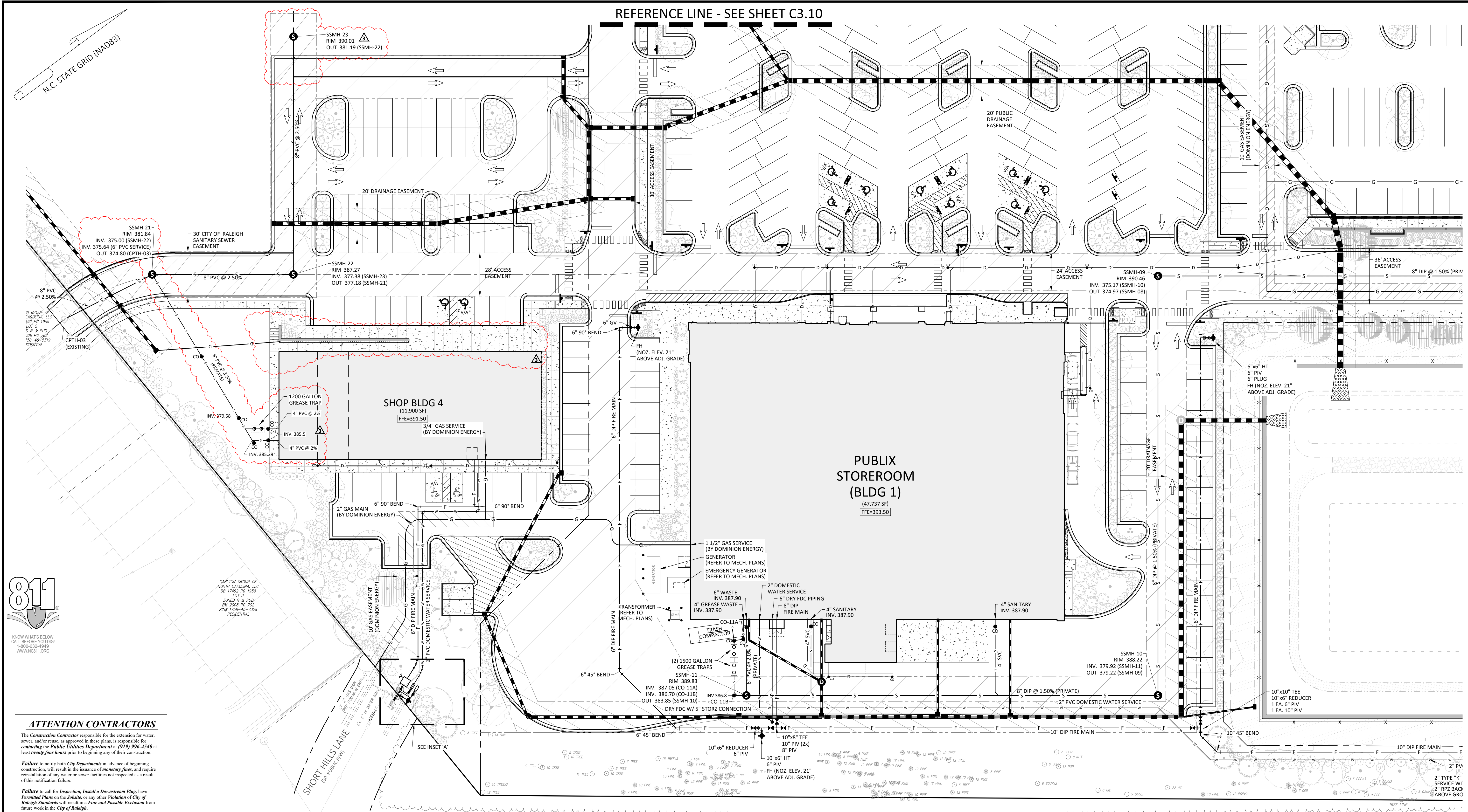


NC License: P-1109  
**ARK CONSULTING GROUP PLLC**  
 ENGINEERS & PLANNERS  
 2755-B Charles Blvd  
 Raleigh, NC 27608  
 (919) 558-0888  
 www.arkconsultinggroup.com

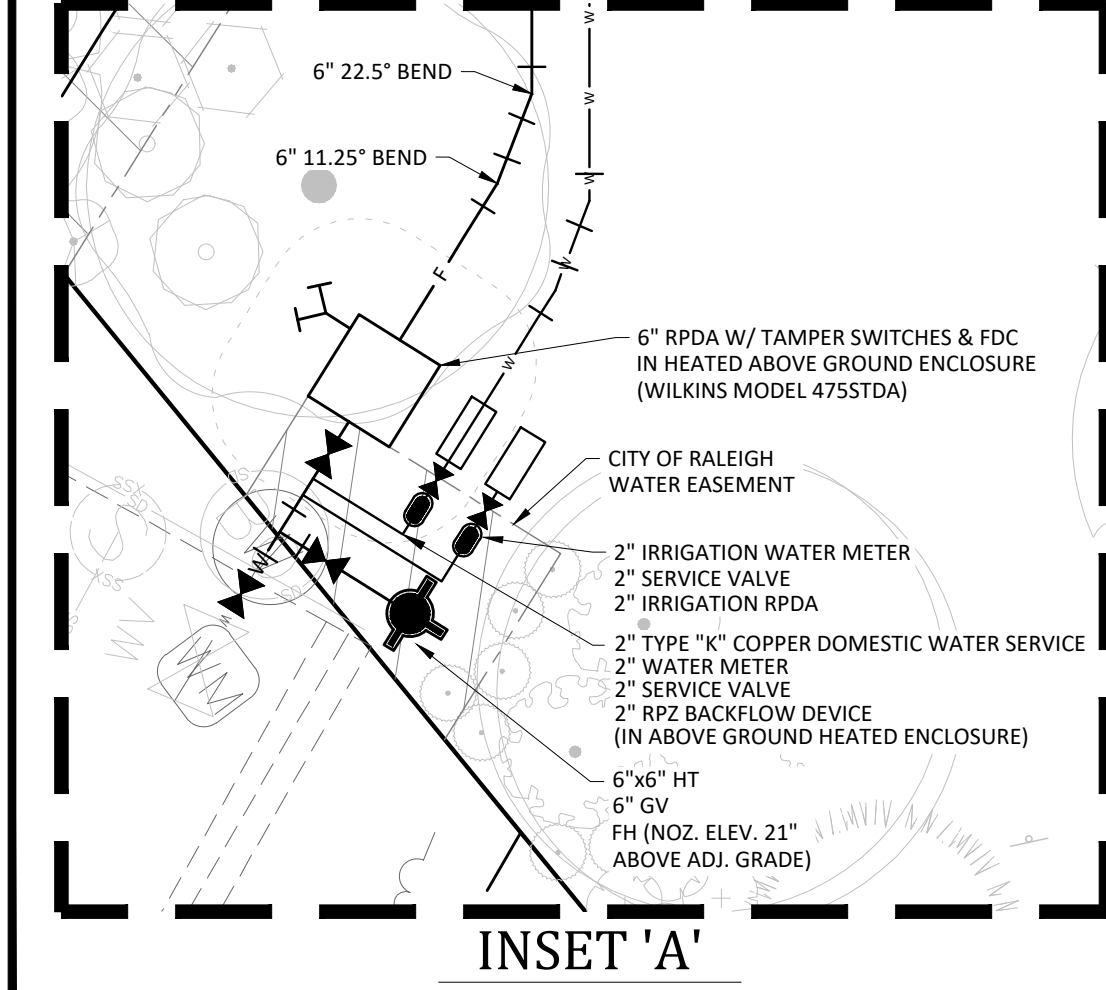
2/20/2024

Project Manager:	BCF
Drawn By:	DLC
Checked By:	STA
Project Number:	21089 / 22012
Drawing Number:	D-1219-CD
Date:	October 26, 2023

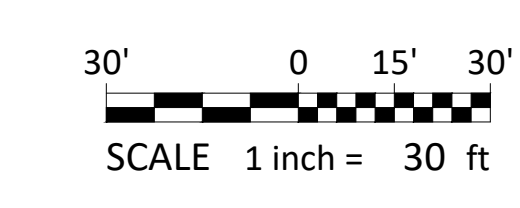
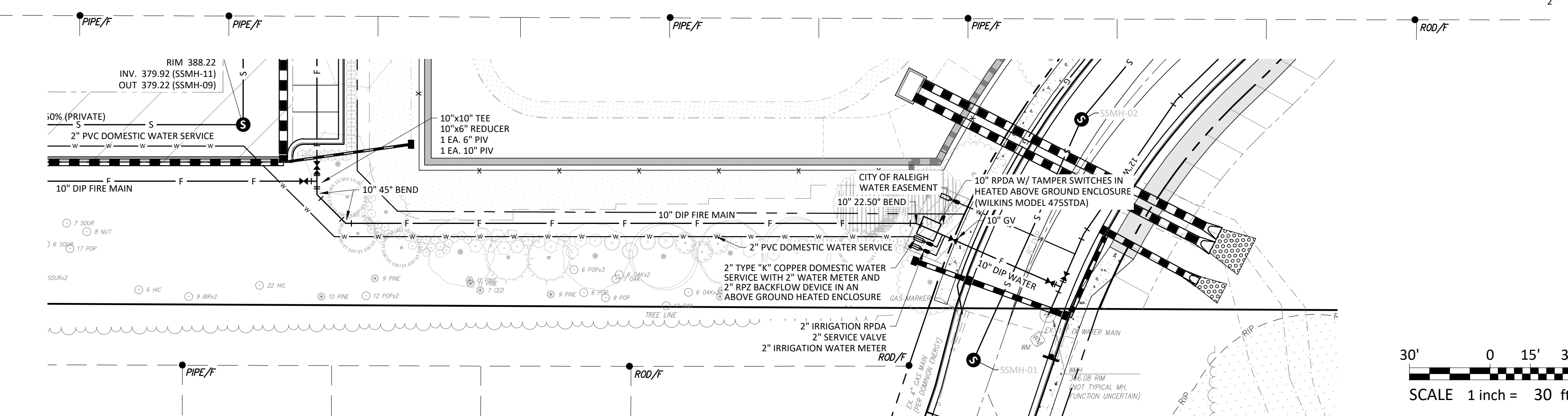
**C3.10**  
 SDP



**ATTENTION CONTRACTORS**  
 The Construction Contractor responsible for the extension for water, sewer, and/or gas, as approved in these plans, is responsible for contacting the Public Utilities Department at (919) 996-4540 at least twenty-four hours prior to beginning any of their construction.  
 Failure to notify both City Departments in advance of beginning construction, will result in the issuance of monetary fines, and require reinstallation of any water or sewer facilities not inspected as a result of this notification failure.  
 Failure to call for inspection, Install a Downstream Plug, have Permitted Plans on the Jobsite, or any other Violation of City of Raleigh Standards will result in a Fine and Possible Exclusion from future work in the City of Raleigh.



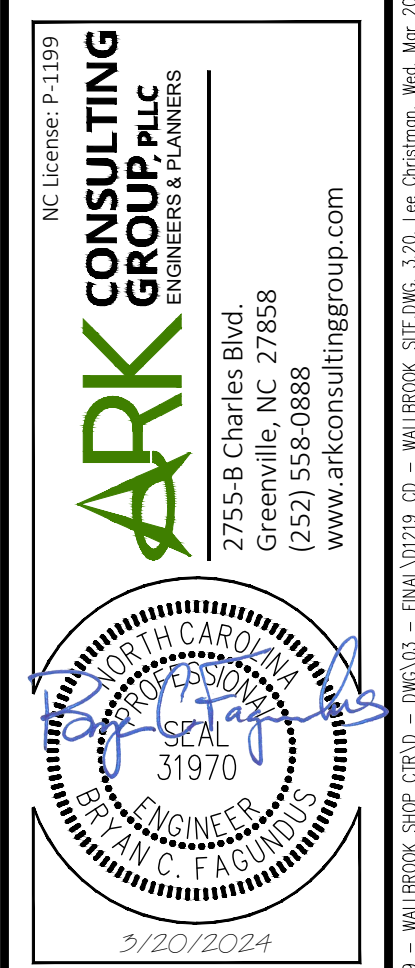
**SITE PERMITTING APPROVAL**  
 Water and Sewer Permits (if applicable)  
 The City of Raleigh consents to the connection and extension of the City's Public Sewer System as shown on this plan. The material and construction methods used for this project shall conform to the standards and specifications of the City's Public Utilities Handbook. City of Raleigh Public Utilities Department Permit # S-5381  
 The City of Raleigh consents to the connection and extension of the City's Public Water System as shown on this plan. The material and construction methods used for this project shall conform to the standards and specifications of the City's Public Utilities Handbook. City of Raleigh Public Utilities Department Permit # W-4074  
 The City of Raleigh consents to the connection to its public sewer system and extensions of the private sewer collection system as shown on this plan. The material and construction methods used for this project shall conform to the standards and specifications of the City's Public Utilities Handbook. City of Raleigh Public Utilities Department Permit # S-5380(P)  
 CITY OF RALEIGH - PLANS AUTHORIZED FOR CONSTRUCTION  
 Plans for the proposed use have been reviewed for general compliance with applicable codes. This limited review, and authorization for construction is not to be considered to represent total compliance with all legal requirements for development and construction. The property owner, design consultants, and contractors are each responsible for compliance with all applicable City, State and Federal laws. This specific authorization below is not a permit, nor shall it be construed to permit any violation of City, State or Federal Law. All construction must be in accordance with all Local, State, and Federal Rules and Regulations.  
 Electronic Approval: This approval is being issued electronically. This approval is valid only upon the signature of a City of Raleigh Review Officer below. The City will retain a copy of the approved plans. Any work authorized by this approval must proceed in accordance with the plans kept on file with the City. This electronic approval may not be edited once issued. Any modification to this approval once issued will invalidate this approval.  
 City of Raleigh Development Approval  
 City of Raleigh Review Officer



NO.	DATE	DESCRIPTION
1	12-06-23	ISSUED FOR CONSTRUCTION
2	14-NOV-23	REVISED PER OWNER/PERMANENT COMMENTS
3	20-MAR-24	REVISED PER OWNER/PERMANENT COMMENTS

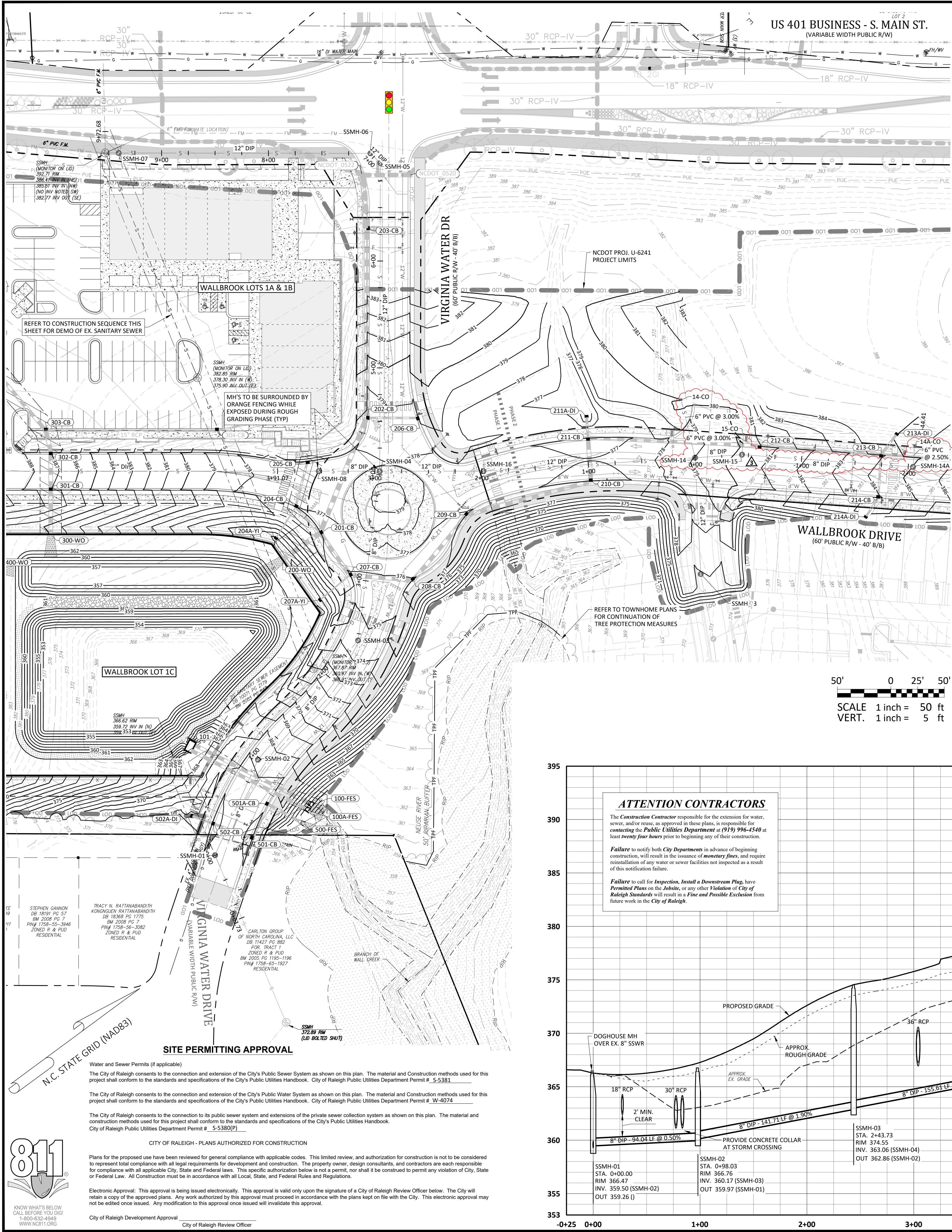


**UTILITY PLAN 'B'**  
**PUBLIX AT WALLBROOK AND WALLBROOK ROADWAY IMPROVEMENTS**  
 Town of Rolesville Project No. SDP 23-05 & CID 23-01  
 Rolesville, Wake County, North Carolina  
 S Main St. / US 401 and Virginia Water Drive



Project Manager: BCF  
 Drawn By: DLC  
 Checked By: STA  
 Project Number: 21089 / 22012  
 Drawing Number: D-1219-CD  
 Date: October 26, 2023  
**C3.20**  
 SDP

**US 401 BUSINESS - S. MAIN ST.**  
(VARIABLE WIDTH PUBLIC R/W)



**Sanitary Sewer Construction Sequence:**

- CONTRACTOR SHALL VERIFY EXISTING INVERT ELEVATIONS PRIOR TO BEGINNING CONSTRUCTION. NOTIFY DESIGN ENGINEER OF ANY DISCREPANCIES PRIOR TO BEGINNING SANITARY SEWER INSTALLATION.
- INSTALL DOGHOUSE SSMH-1, LEAVING THE EXISTING SANITARY SEWER MAIN IN SERVICE. EXISTING MAIN SHALL NOT BE CUT UNTIL ACCEPTANCE OF NEW MAIN IN ITS ENTIRETY.
- INSTALL NEW SANITARY SEWER MAIN FROM SSMH-1 UP TO SSMH-5. PERFORM SATISFACTORY VACUUM AND AIR TESTING OF NEW SANITARY SYSTEM BETWEEN SSMH-1 AND SSMH-5.
- INSTALL PIPE STUB WITH CAP OUT OF SSMH-4 TOWARDS SSMH-8 AND SSMH-13. INSTALLATION OF MAIN TOWARDS SSMH-8 AND SSMH-13 SHALL NOT OCCUR UNTIL AFTER THE COMPLETION OF THE TIE-IN OF EXISTING FORCE MAIN #3 TO SSMH-7.
- UPON COMPLETION OF SATISFACTORY VACUUM AND AIR TESTING OF NEW SANITARY SEWER BETWEEN SSMH-1 AND SSMH-5, COORDINATE WITH THE CITY OF RALEIGH TO CUT EXISTING MAIN THROUGH SSMH-5 TO FACILITATE FLOW FROM NEW SANITARY SEWER SYSTEM THROUGH SSMH-5.
- COORDINATE WITH THE CITY OF RALEIGH TO ABANDON THE EXISTING FORCE MAIN #1 CONNECTION TO THE EXISTING SSMH-1 AND PERFORM THE TIE-IN OF THE EXISTING FORCE MAIN #1 TO SSMH-5. TIE-IN SHALL BE PERFORMED DURING A LOW-FLOW PERIOD.
- UPON COMPLETION OF THE TIE-IN OF EXISTING FORCE MAIN #1 TO SSMH-5, REMOVE THE REMAINDER OF EXISTING FORCE MAIN #1 AND INSTALL NEW SANITARY SEWER FROM SSMH-5 UP TO SSMH-7. PERFORM SATISFACTORY VACUUM AND AIR TESTING OF NEW SANITARY SYSTEM BETWEEN SSMH-5 AND SSMH-7.
- UPON COMPLETION OF SATISFACTORY VACUUM AND AIR TESTING OF NEW SANITARY SEWER BETWEEN SSMH-5 AND SSMH-7, COORDINATE WITH THE CITY OF RALEIGH TO CONNECT THE EXISTING FORCE MAIN #2 TO SSMH-7. TIE-IN SHALL BE PERFORMED DURING A LOW-FLOW PERIOD.
- UPON COMPLETION OF THE TIE-IN OF EXISTING FORCE MAIN #2 TO SSMH-7, COORDINATE WITH THE CITY OF RALEIGH FOR THE REMOVAL OF THE EXISTING SSMH-1 AND PERFORM THE TIE-IN OF THE EXISTING FORCE MAIN #3 TO SSMH-7.
- UPON COMPLETION OF THE TIE-IN OF THE EXISTING FORCE MAIN #3 TO SSMH-7, REMOVAL OF THE REMAINDER OF THE EXISTING GRAVITY SANITARY SEWER BETWEEN EXISTING SSMH-1 AND PROPOSED SSMH-5 MAY BE PERFORMED.

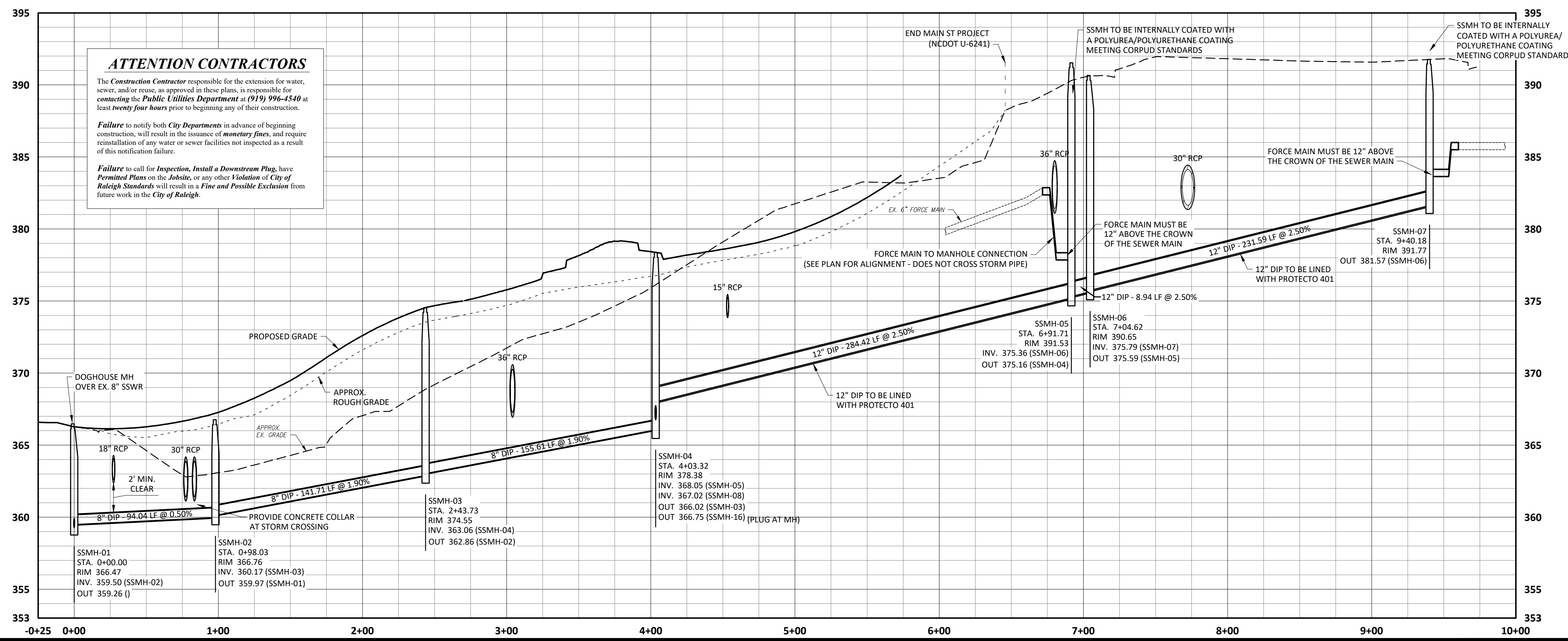
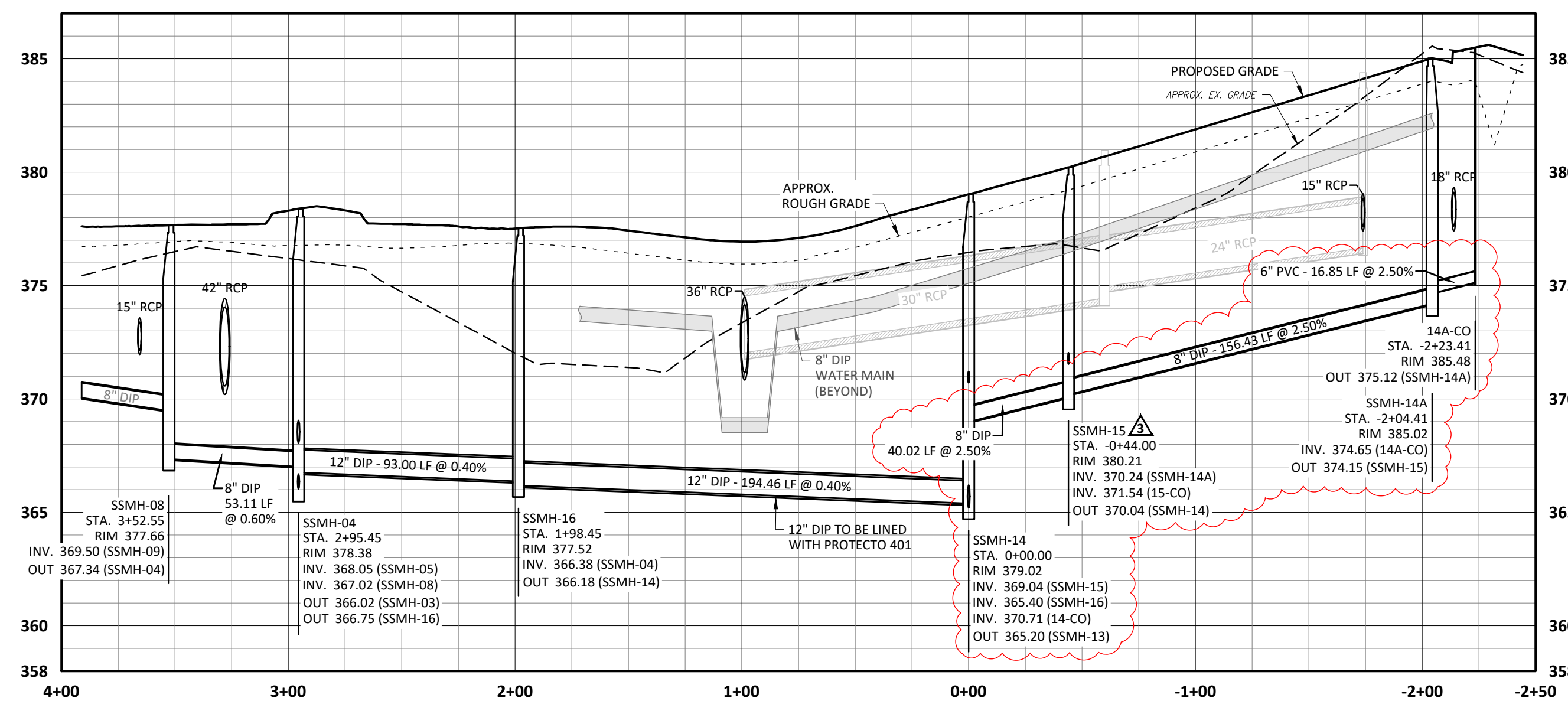
**Sequence For Sanitary Sewer Abandonment:**

- UPON THE COMPLETION AND ACCEPTANCE OF THE WALLBROOK TOWNHOME SANITARY SEWER (REF. CD 22-04 & CORPUD PERMIT # 5-5230), SANITARY SEWER FROM SSMH-13 TO SSMH-04 SHALL BE INSTALLED
- UPON THE COMPLETION OF THE TIE-IN AT SSMH-13, INSTALLATION FROM SSMH-13 TO SSMH-04, AND TIE-IN AT SSMH-04 CONTRACTOR SHALL PERFORM VACUUM AND AIR TESTING IN ACCORDANCE WITH CITY OF RALEIGH REQUIREMENTS FOR ACCEPTANCE
- UPON ACCEPTANCE OF THE SANITARY SEWER BETWEEN SSMH-13 AND SSMH-04, THE DOWNSTREAM SANITARY SEWER FROM SSMH-04 TO SSMH-01 SHALL BE ABANDONED IN PLACE WITH THE FOLLOWING SEQUENCE:
  - INSTALL FLOWABLE FILL TO THE CROWN OF THE SEWER MAIN
  - FILL MANHOLE RISER WITH #67 STONE
  - REMOVE CONE SECTION OF MANHOLE & BACKFILL WITH COMPACTED SELECT BACKFILL
  - INSTALL STONE BASE & ASPHALT PAVEMENT PATCH AS SHOWN ON THE ASPHALT PAVEMENT SECTIONS

**Sewer Bypass Pumping:**

A BYPASS PLAN SEALED BY A PROFESSIONAL ENGINEER MUST BE SUBMITTED TO PUBLIC UTILITIES PRIOR TO PUMPING OPERATIONS TO COORDINATE WITH ADMINISTRATION ENGINEERING STAFF. PUMPS SHOULD BE SIZED TO HANDLE THE PEAK DAILY FLOW (2.5 TIMES THE AVERAGE DAILY FLOW WITH A MINIMUM OF 50 GPM) FOR THE LINE OR AREA OF WORK. THE CONTRACTOR SHALL SECURE PUMPS FROM A PUMP SUPPLIER ACCORDING TO THE PROVIDED FLOW INFORMATION. PUMPING OPERATIONS MUST BE MONITORED 24 HOURS A DAY FOR EACH DAY OF THE PUMPING OPERATION BY QUALIFIED PERSONNEL IN ORDER TO RESPOND TO PROBLEMS OR FAILURES. 100% REDUNDANCY IS REQUIRED FOR PUMPING OPERATIONS. IN ADDITION, BACK UP PUMPS ARE TO BE CONNECTED TO THE BYPASS FORCE MAIN TO FACILITATE IMMEDIATE USE UPON FAILURE OF THE PRIMARY PUMPS. SEWER SERVICE OUTAGES MUST BE SCHEDULED ONE WEEK IN ADVANCE AND MAY NOT LAST LONGER THAN EIGHT HOURS.

WALLBROOK: SUGGESTED SEWER BYPASS PUMPING PLAN				
SUCTION MH	DISCHARGE MH	WORK TO BE PERFORMED	(GPM) AVG DAILY FLOW	(GPM) PEAK FLOW
EX. SSMH 1 (EX. SSMH166722)	SSMH 5	REPLACE EX. SSMH-1 WITH SSMH-7 RECONNECT FORCE MAIN FROM EX. SSMH-1 TO SSMH-7	317 GPM	800 GPM



**ATTENTION CONTRACTORS**  
The Construction Contractor responsible for the extension for water, sewer, and/or reuse, as approved in these plans, is responsible for contacting the Public Utilities Department at (919) 996-4540 at least twenty four hours prior to beginning any of their construction.  
**Failure** to notify both City Departments in advance of beginning construction, will result in the issuance of monetary fines, and require reinstallation of any water or sewer facilities not inspected as a result of this notification failure.  
**Failure** to call for inspection, install a Downstream Plug, have Permitted Plans on the Jobite, or any other violation of City of Raleigh Standards will result in a Fine and Possible Exclusion from future work in the City of Raleigh.

**SITE PERMITTING APPROVAL**  
Water and Sewer Permits (if applicable)  
The City of Raleigh consents to the connection and extension of the City's Public Sewer System as shown on this plan. The material and Construction methods used for this project shall conform to the standards and specifications of the City's Public Utilities Handbook. City of Raleigh Public Utilities Department Permit # 5-5381  
The City of Raleigh consents to the connection and extension of the City's Public Water System as shown on this plan. The material and Construction methods used for this project shall conform to the standards and specifications of the City's Public Utilities Handbook. City of Raleigh Public Utilities Department Permit # W-4074  
The City of Raleigh consents to the connection to its public sewer system and extensions of the private sewer collection system as shown on this plan. The material and construction methods used for this project shall conform to the standards and specifications of the City's Public Utilities Handbook. City of Raleigh Public Utilities Department Permit # 5-5380(P)  
CITY OF RALEIGH - PLANS AUTHORIZED FOR CONSTRUCTION  
Plans for the proposed use have been reviewed for general compliance with applicable codes. This limited review, and authorization for construction is not to be considered to represent total compliance with all legal requirements for development and construction. The property owner, design consultants, and contractors are each responsible for compliance with all applicable City, State and Federal laws. This specific authorization below is not a permit, nor shall it be construed to permit any violation of City, State or Federal Law. All Construction must be in accordance with all Local, State, and Federal Rules and Regulations.  
Electronic Approval: This approval is being issued electronically. This approval is valid only upon the signature of a City of Raleigh Review Officer below. The City will retain a copy of the approved plans. Any work authorized by this approval must proceed in accordance with the plans kept on file with the City. This electronic approval may not be edited once issued. Any modification to this approval once issued will invalidate this approval.  
City of Raleigh Department Approval  
City of Raleigh Review Officer

**REVISIONS:**

#	DATE	DESCRIPTION
1	12-06-23	ISSUED FOR CONSTRUCTION
2	12-06-23	ISSUED FOR CONSTRUCTION
3	12-06-23	REVISED PER OWNER/FEMAN COMMENTS

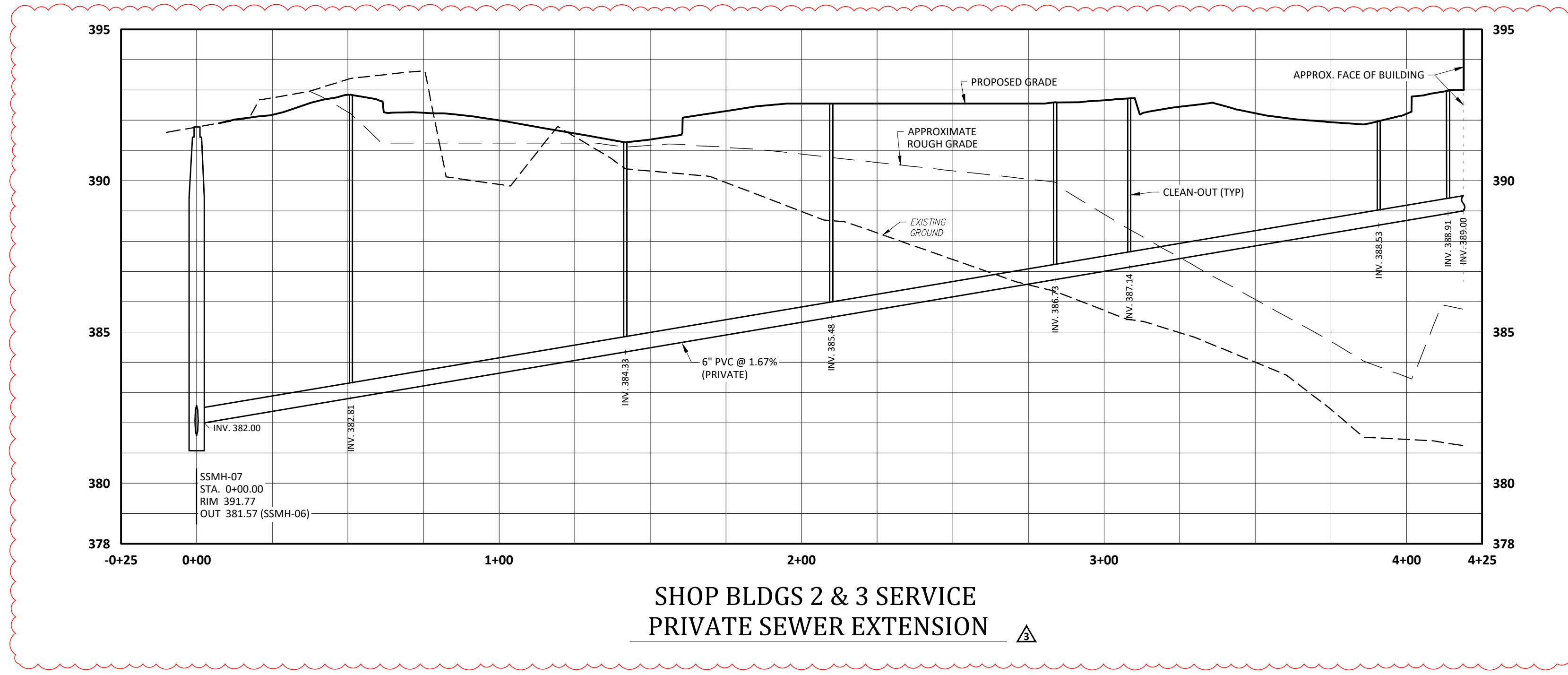
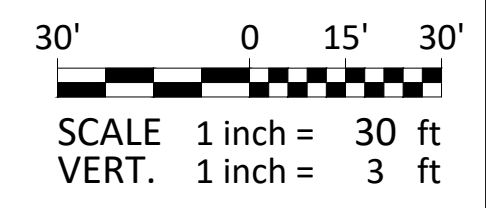
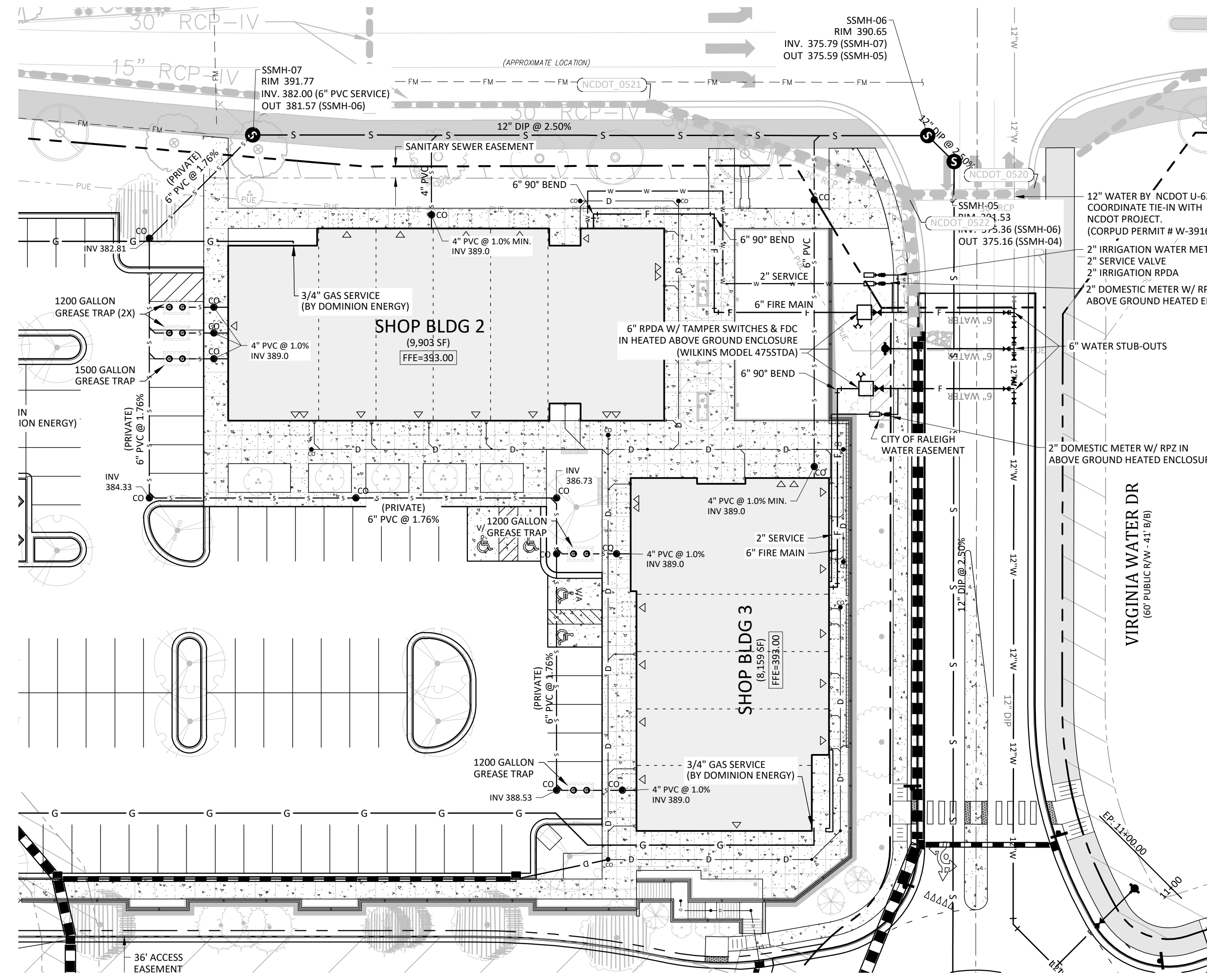
**CROSLAND SOUTHEAST**

**PLAN PROFILE - SANITARY SEWER RELOCATION**  
**PUBLIX AT WALLBROOK AND WALLBROOK ROADWAY IMPROVEMENTS**  
Town of Rolesville Project No. SDP 23-05 & CID 23-01  
Rolesville, Wake County, North Carolina  
S Main St. / US 401 and Virginia Water Drive

**ARK CONSULTING GROUP PLLC**  
ENGINEERS & PLANNERS  
2755-B Charles Blvd  
Raleigh, NC 27608  
(919) 558-0888  
www.arkconsultinggroup.com

Project Manager: BCF  
Drawn By: DLC  
Checked By: STA  
Project Number: 21089 / 22012  
Drawing Number: D-1219-CD  
Date: October 26, 2023

**C3.30**  
CID



SHOP BLDGS 2 & 3 SERVICE PRIVATE SEWER EXTENSION

**ATTENTION CONTRACTORS**  
 The Construction Contractor responsible for the extension for water, sewer, and/or gas, as approved in these plans, is responsible for contacting the Public Utilities Department at (919) 996-4540 at least twenty four hours prior to beginning any of their construction.  
 Failure to notify both City Departments in advance of beginning construction, will result in the issuance of monetary fines, and require reinstallation of any water or sewer facilities not inspected as a result of this notification failure.  
 Failure to call for inspection, install a Downstream Plug, have Permitted Plans on the Jobsite, or any other Violation of City of Raleigh Standards will result in a Fine and Possible Exclusion from future work in the City of Raleigh.

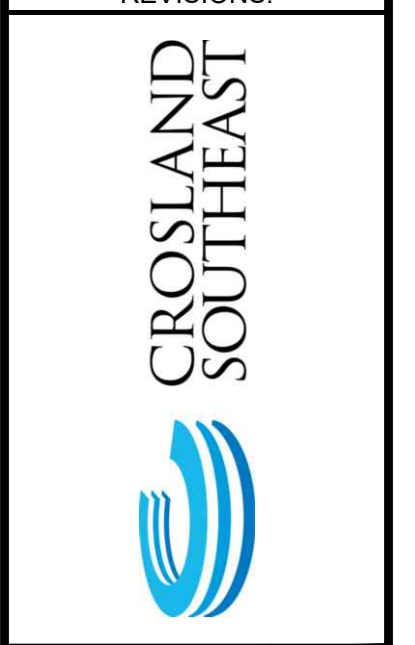
**SITE PERMITTING APPROVAL**  
 Water and Sewer Permits (if applicable)  
 The City of Raleigh consents to the connection and extension of the City's Public Sewer System as shown on this plan. The material and construction methods used for this project shall conform to the standards and specifications of the City's Public Utilities Handbook. City of Raleigh Public Utilities Department Permit # S-5381  
 The City of Raleigh consents to the connection and extension of the City's Public Water System as shown on this plan. The material and construction methods used for this project shall conform to the standards and specifications of the City's Public Utilities Handbook. City of Raleigh Public Utilities Department Permit # W-4074  
 The City of Raleigh consents to the connection to its public sewer system and extensions of the private sewer collection system as shown on this plan. The material and construction methods used for this project shall conform to the standards and specifications of the City's Public Utilities Handbook. City of Raleigh Public Utilities Department Permit # S-5380(P).

CITY OF RALEIGH - PLANS AUTHORIZED FOR CONSTRUCTION  
 Plans for the proposed use have been reviewed for general compliance with applicable codes. This limited review, and authorization for construction is not to be considered to represent total compliance with all legal requirements for development and construction. The property owner, design consultants, and contractors are each responsible for compliance with all applicable City, State and Federal laws. This specific authorization below is not a permit, nor shall it be construed to permit any violation of City, State or Federal Law. All Construction must be in accordance with all Local, State, and Federal Rules and Regulations.

Electronic Approval: This approval is being issued electronically. This approval is valid only upon the signature of a City of Raleigh Review Officer below. The City will retain a copy of the approved plans. Any work authorized by this approval must proceed in accordance with the plans kept on file with the City. This electronic approval may not be edited once issued. Any modification to this approval once issued will invalidate this approval.

City of Raleigh Development Approval  
 City of Raleigh Review Officer

#	DATE	DESCRIPTION
1	12-06-23	SDP 23-05 / CID 23-01 COMBINED REVIEW
2	14-NOV-23	ISSUED FOR CONSTRUCTION
3	20-MAR-24	REVISED PER OWNER/TENANT COMMENTS



**PLAN-PROFILE - PRIVATE SEWER - CORNER SHOPS**  
**PUBLIX AT WALLBROOK AND WALLBROOK ROADWAY IMPROVEMENTS**  
 Town of Rolesville Project No. SDP 23-05 & CID 23-01  
 Rolesville, Wake County, North Carolina  
 S Main St. / US 401 and Virginia Water Drive

NC License: P-1199  
**ARK CONSULTING GROUP PLLC**  
 ENGINEERS & PLANNERS  
 2755-B Charles Blvd  
 Raleigh, NC 27608  
 (919) 558-0888  
 www.arkconsultinggroup.com

Project Manager:	BCF
Drawn By:	DLC
Checked By:	STA
Project Number:	21089 / 22012
Drawing Number:	D-1219-CD
Date:	October 26, 2023

**C3.31**  
 SDP

N/C  
WAKE COUNTY BOARD  
OF ALCOHOLIC CONTROL  
DB 13088 PG 2155  
LOT 1  
ZONED CC-CZ  
BY 2008 PG 302  
PWA 1708-45-1307  
COMMERCIAL

**ATTENTION CONTRACTORS**  
The Construction Contractor responsible for the extension for water, sewer, and/or gas, as approved in these plans, is responsible for contacting the Public Utilities Department at (919) 996-4540 at least twenty four hours prior to beginning any of their construction.  
Failure to notify both City Departments in advance of beginning construction, will result in the issuance of monetary fines, and require restoration of any water or sewer facilities not inspected as a result of this notification failure.  
Failure to call for inspection, install a Downstream Plug, have Permitted Plans on the Jobsite, or any other Violation of City of Raleigh Standards will result in a Fine and Possible Exclusion from future work in the City of Raleigh.

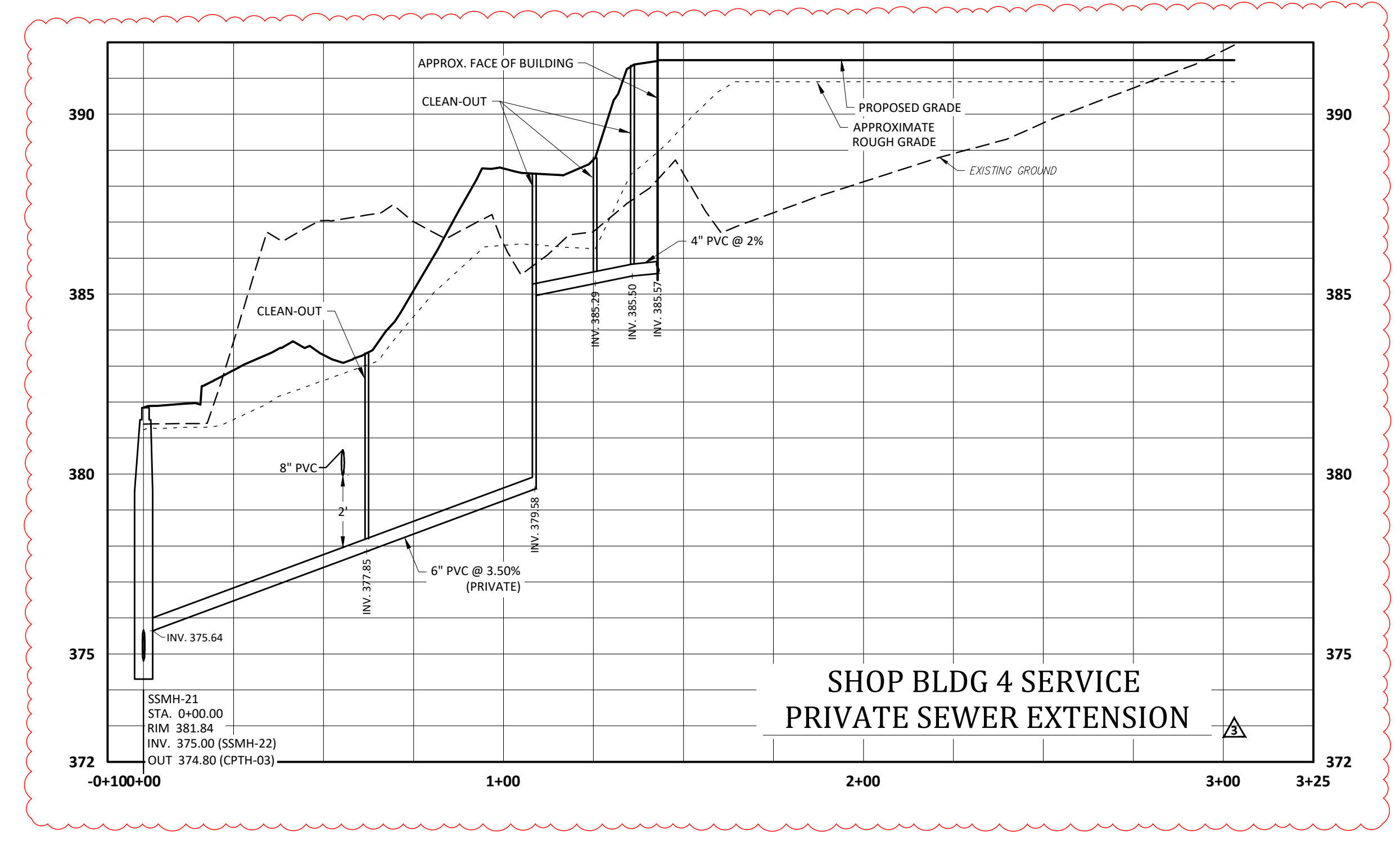
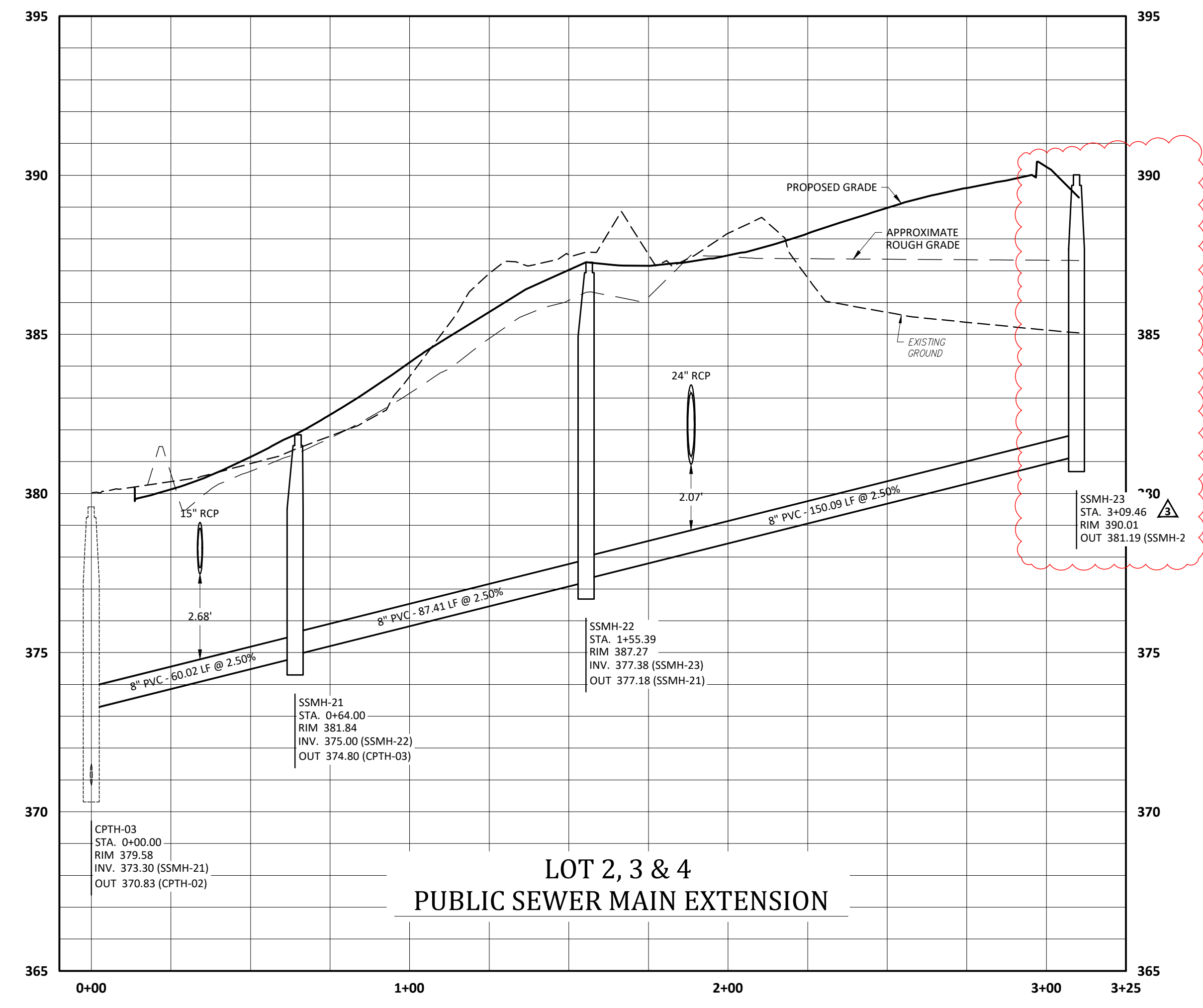
**SITE PERMITTING APPROVAL**

Water and Sewer Permits (if applicable)  
The City of Raleigh consents to the connection and extension of the City's Public Sewer System as shown on this plan. The material and construction methods used for this project shall conform to the standards and specifications of the City's Public Utilities Handbook. City of Raleigh Public Utilities Department Permit # S-5381  
The City of Raleigh consents to the connection and extension of the City's Public Water System as shown on this plan. The material and construction methods used for this project shall conform to the standards and specifications of the City's Public Utilities Handbook. City of Raleigh Public Utilities Department Permit # W-4074  
The City of Raleigh consents to the connection to its public sewer system and extensions of the private sewer collection system as shown on this plan. The material and construction methods used for this project shall conform to the standards and specifications of the City's Public Utilities Handbook. City of Raleigh Public Utilities Department Permit # S-5380(P)

CITY OF RALEIGH - PLANS AUTHORIZED FOR CONSTRUCTION  
Plans for the proposed use have been reviewed for general compliance with applicable codes. This limited review, and authorization for construction is not to be considered to represent total compliance with all legal requirements for development and construction. The property owner, design consultants, and contractors are each responsible for compliance with all applicable City, State and Federal laws. This specific authorization below is not a permit, nor shall it be construed to permit any violation of City, State or Federal Law. All construction must be in accordance with all Local, State, and Federal Rules and Regulations.  
Electronic Approval: This approval is being issued electronically. This approval is valid only upon the signature of a City of Raleigh Review Officer below. The City will retain a copy of the approved plans. Any work authorized by this approval must proceed in accordance with the plans kept on file with the City. This electronic approval may not be edited once issued. Any modification to this approval once issued will invalidate this approval.  
City of Raleigh Development Approval  
City of Raleigh Review Officer

MARSHSKIP WAY  
(60' PUBLIC R/W) DESIGNED BY OTHERS

CARLTON GROUP  
NORTH CAROLINA, LLC  
DB 14252 PG 1059  
LOT 2  
ZONED R & PLD  
BY 2008 PG 385  
PWA 1708-46-1319  
RESIDENTIAL



30' 0 15' 30'  
SCALE 1 inch = 30 ft  
VERT. 1 inch = 3 ft

**CROSLAND SOUTHEAST**

**PLAN-PROFILE - PRIVATE SEWER - SHOP BLDG #4**  
**PUBLIX AT WALLBROOK AND WALLBROOK ROADWAY IMPROVEMENTS**  
Town of Rolesville Project No. SDP 23-05 & CID 23-01  
Rolesville, Wake County, North Carolina  
S Main St. / US 401 and Virginia Water Drive

REVISIONS:

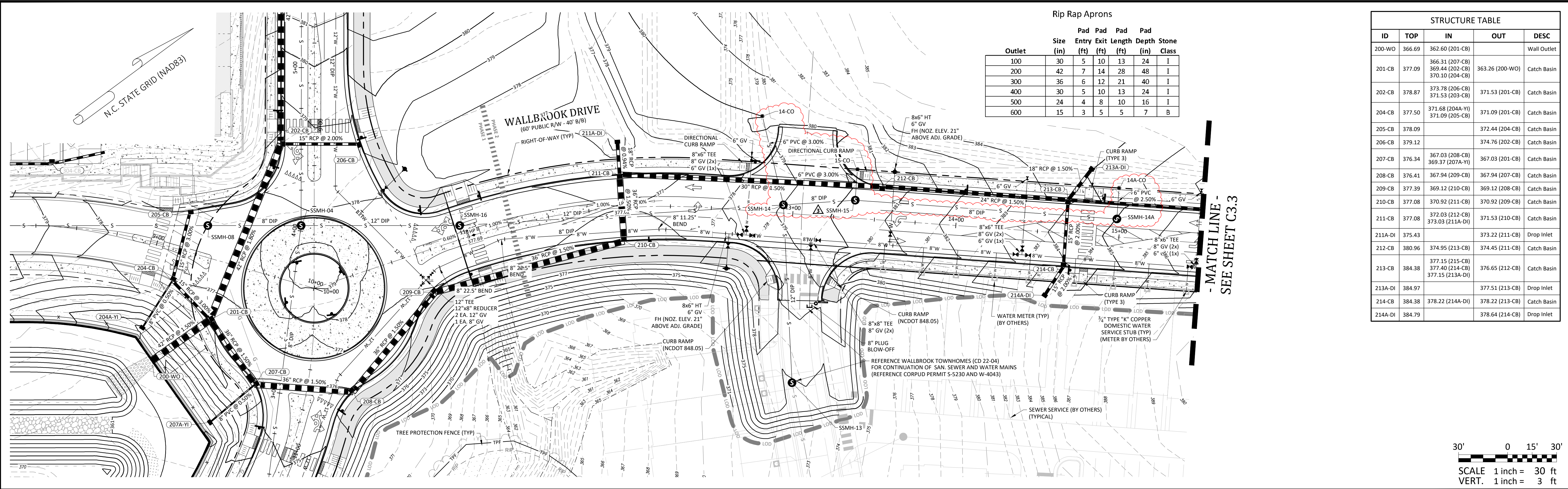
#	DATE	DESCRIPTION
1	26-OCT-23	SDP 23-05 / CID 23-01 COMBINED REVIEW
2	14-NOV-23	ISSUED FOR CONSTRUCTION
3	20-MAR-24	REVISED PER OWNER/TENANT COMMENTS

Project Manager: BCF  
Drawn By: DLC  
Checked By: STA  
Project Number: 21089 / 22012  
Drawing Number: D-1219-CD  
Date: October 26, 2023

**C3.33**  
SDP

ARK CONSULTING GROUP PLLC  
ENGINEERS & PLANNERS  
2755-B Charles Blvd  
Raleigh, NC 27608  
(919) 558-0888  
www.arkconsultinggroup.com

NC License: P-1199  
31970  
2/20/2024

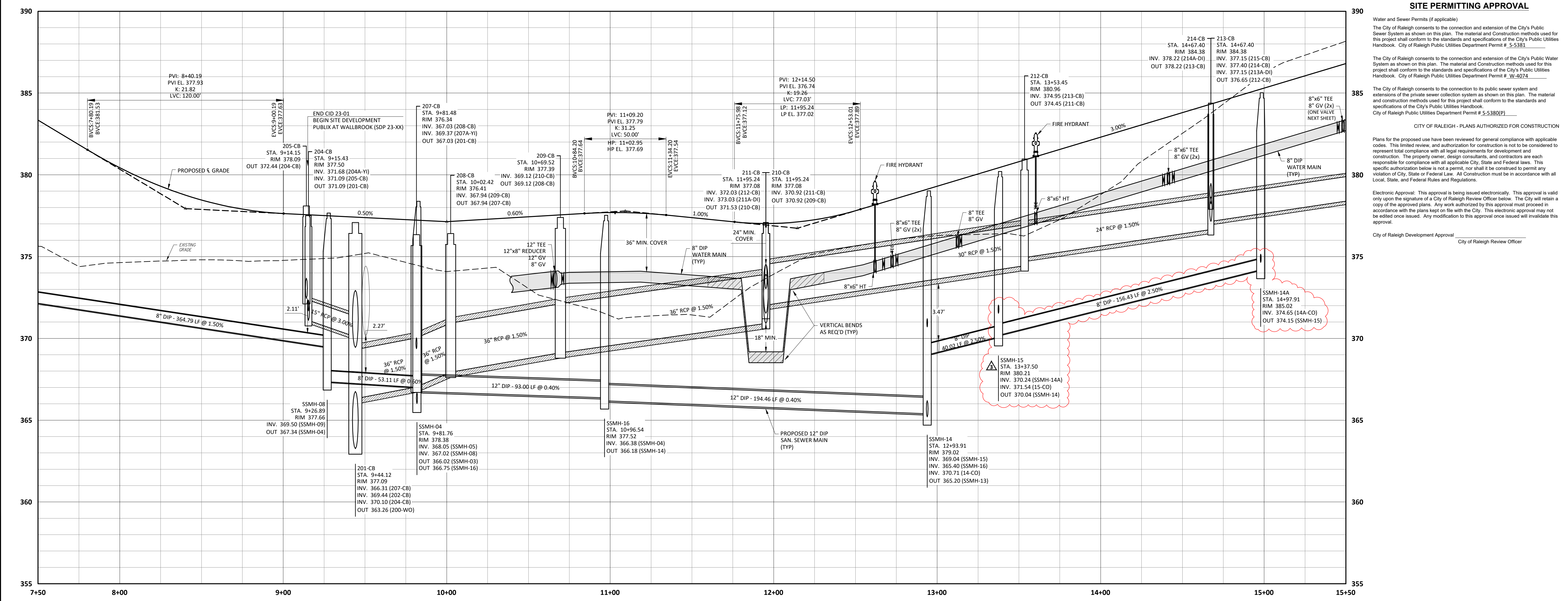


Rip Rap Aprons

Outlet	Size (in)	Pad Entry (ft)	Pad Exit (ft)	Pad Length (ft)	Pad Depth (in)	Stone Class
100	30	5	10	13	24	I
200	42	7	14	28	48	I
300	36	6	12	21	40	I
400	30	5	10	13	24	I
500	24	4	8	10	16	I
600	15	3	5	5	7	B

STRUCTURE TABLE

ID	TOP	IN	OUT	DESC
200-WO	366.69	362.60 (201-CB)		Wall Outlet
201-CB	377.09	366.31 (207-CB) 369.44 (202-CB) 370.10 (204-CB)	363.26 (200-WO)	Catch Basin
202-CB	378.87	373.78 (206-CB) 371.53 (203-CB)	371.53 (201-CB)	Catch Basin
204-CB	377.50	371.68 (204A-YI) 371.09 (205-CB)	371.09 (201-CB)	Catch Basin
205-CB	378.09		372.44 (204-CB)	Catch Basin
206-CB	379.12		374.76 (202-CB)	Catch Basin
207-CB	376.34	367.03 (208-CB) 369.37 (207A-YI)	367.03 (201-CB)	Catch Basin
208-CB	376.41	367.94 (209-CB)	367.94 (207-CB)	Catch Basin
209-CB	377.39	369.12 (210-CB)	369.12 (208-CB)	Catch Basin
210-CB	377.08	370.92 (211-CB)	370.92 (209-CB)	Catch Basin
211-CB	377.08	372.03 (212-CB) 373.03 (211A-DI)	371.53 (210-CB)	Catch Basin
211A-DI	375.43		373.22 (211-CB)	Drop Inlet
212-CB	380.96	374.95 (213-CB)	374.45 (211-CB)	Catch Basin
213-CB	384.38	377.15 (215-CB) 377.40 (214-CB) 377.15 (213A-DI)	376.65 (212-CB)	Catch Basin
213A-DI	384.97		377.51 (213-CB)	Drop Inlet
214-CB	384.38	378.22 (214A-DI)	378.22 (213-CB)	Catch Basin
214A-DI	384.79		378.64 (214-CB)	Drop Inlet



**SITE PERMITTING APPROVAL**

Water and Sewer Permits (if applicable)

The City of Raleigh consents to the connection and extension of the City's Public Sewer System as shown on this plan. The material and Construction methods used for this project shall conform to the standards and specifications of the City's Public Utilities Handbook, City of Raleigh Public Utilities Department Permit # 5-5383.

The City of Raleigh consents to the connection and extension of the City's Public Water System as shown on this plan. The material and Construction methods used for this project shall conform to the standards and specifications of the City's Public Utilities Handbook, City of Raleigh Public Utilities Department Permit # W-4074.

The City of Raleigh consents to the connection to its public sewer system and extensions of the private sewer collection system as shown on this plan. The material and construction methods used for this project shall conform to the standards and specifications of the City's Public Utilities Handbook, City of Raleigh Public Utilities Department Permit # 5-5380(P).

CITY OF RALEIGH - PLANS AUTHORIZED FOR CONSTRUCTION

Plans for the proposed use have been reviewed for general compliance with applicable codes. This limited review, and authorization for construction is not to be considered to represent total compliance with all legal requirements for development and construction. The property owner, design consultants, and contractors are each responsible for compliance with all applicable City, State and Federal laws. This specific authorization below is not a permit, nor shall it be construed to permit any violation of City, State or Federal Law. All construction must be in accordance with all Local, State, and Federal Rules and Regulations.

Electronic Approval: This approval is being issued electronically. This approval is valid only upon the signature of a City of Raleigh Review Officer below. The City will retain a copy of the approved plans. Any work authorized by this approval must proceed in accordance with the plans kept on file with the City. This electronic approval may not be edited once issued. Any modification to this approval once issued will invalidate this approval.

City of Raleigh Development Approval  
City of Raleigh Review Officer

3. 10/18/24 REVISED PER OWNER/TEAM COMMENTS  
2. 14/NOV/23 ISSUED FOR CONSTRUCTION  
1. 26/OCT/23 SUP-23-05 / CID-23-01 COMBINED REVIEW DESCRIPTION

REVISIONS:

CROSLAND SOUTHEAST

PLAN-PROFILE - WALLBROOK DRIVE

PUBLIX AT WALLBROOK AND WALLBROOK ROADWAY IMPROVEMENTS

Town of Rolesville Project No. SDP 23-05 & CID 23-01

S Main St. / US 401 and Virginia Water Drive

Rolesville, Wake County, North Carolina

NC License: P-1199

**ARK CONSULTING GROUP PLLC**  
ENGINEERS & PLANNERS

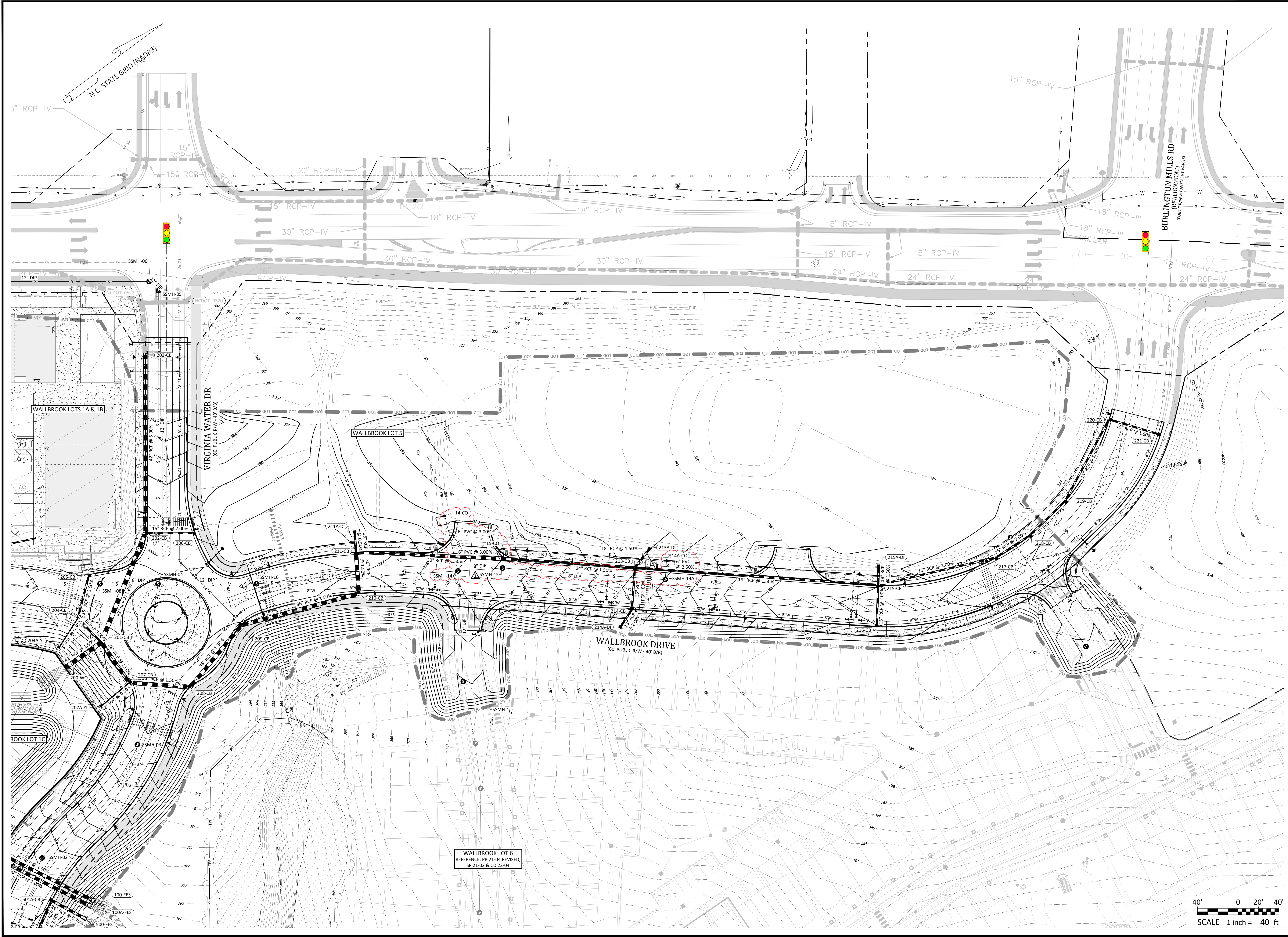
2755-B Charles Blvd  
Raleigh, NC 27608  
(757) 558-0888  
www.arkconsultinggroup.com

31970  
C. FAGNONI  
P.E.  
1/20/2024

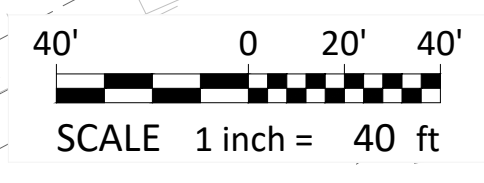
Project Manager: BCF  
Drawn By: DLC  
Checked By: STA  
Project Number: 21089 / 22012  
Drawing Number: D-1219-CD  
Date: October 26, 2023

**C5.01**  
CID





WALLBROOK LOT 6  
 REFERENCE: PR 21-04 REVISED,  
 SP 21-02 & CD 22-04



GRADING PLAN - LOT 5

**PUBLIX AT WALLBROOK AND WALLBROOK ROADWAY IMPROVEMENTS**  
 Town of Rolesville Project No. SDP 23-05 & CID 23-01  
 S Main St. / US 401 and Virginia Water Drive  
 Rolesville, Wake County, North Carolina

NC License: P1139  
**ARK CONSULTING GROUP PLLC**  
 ENGINEERS & PLANNERS  
 2755-B Charles Blvd  
 Charlotte, NC 28205  
 (754) 558-0888  
 www.arkconsultinggroup.com

Project Manager:	BCF
Drawn By:	DLC
Checked By:	STA
Project Number:	21089 / 22012
Drawing Number:	D-1219-CD
Date:	October 26, 2023

**C5.10**  
 CID



REVISIONS:

#	DATE	DESCRIPTION
1	12/02/23	SDP 23-05 / CID 23-01 COMBINED REVIEW
2	14/02/23	ISSUED FOR CONSTRUCTION
3	20/04/23	REVISED PER OWNER/TENANT COMMENTS