

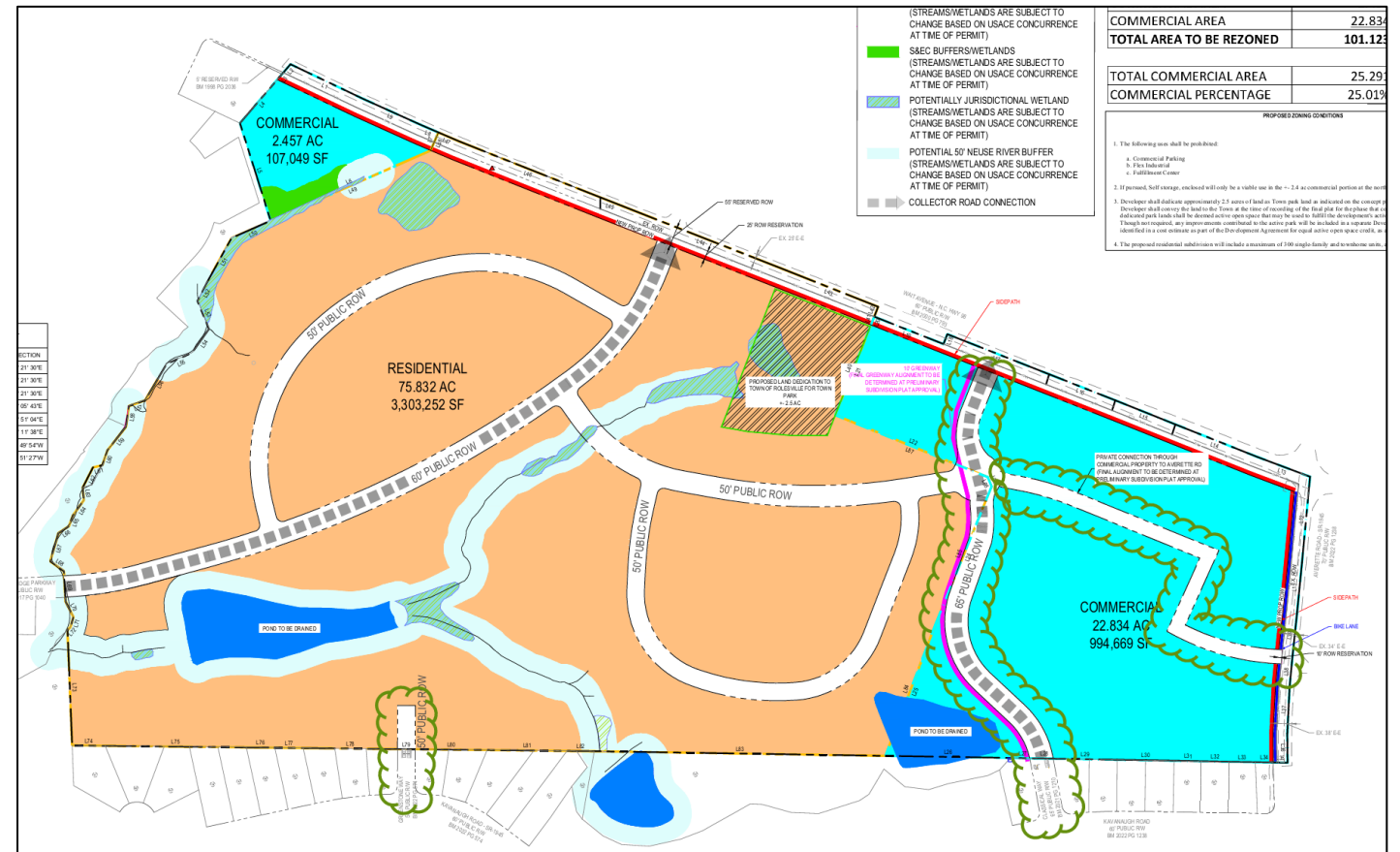
Atticus Woods Rezoning REZ-24-05

Rolesville Planning Board

December 15, 2025

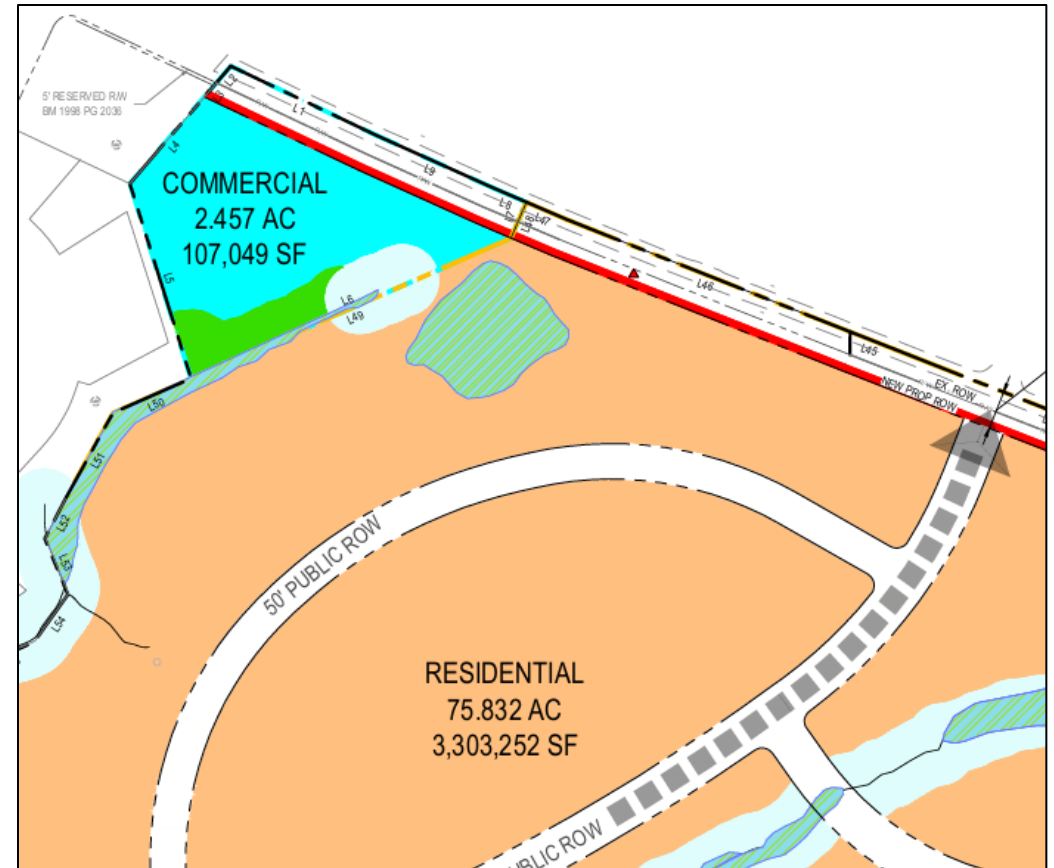
Updated Plan Shows All Required Road Connections & Improvements

- Updates made after Planning Board recommended denial in October hearing.
- Updated plans include street connections to road stubs to south.
- Updated plans show full east-west vehicular connection required by CPT (*Austin Ridge Parkway* ← → *Old Pearce Road*)



Update Adds Restrictions on Self-Storage

- Self Storage use restricted to +/- 2.4-acre commercial area at the northwestern corner of the property. (Condition #2)
- Max self-storage size dropped from 110,000 sf to 100,000 sf. (Development Agreement)



Other Updates

- Max size of grocery store in main commercial area reduced to 65,000 sf
- Dropped request to modify LDO commercial buildout requirements

