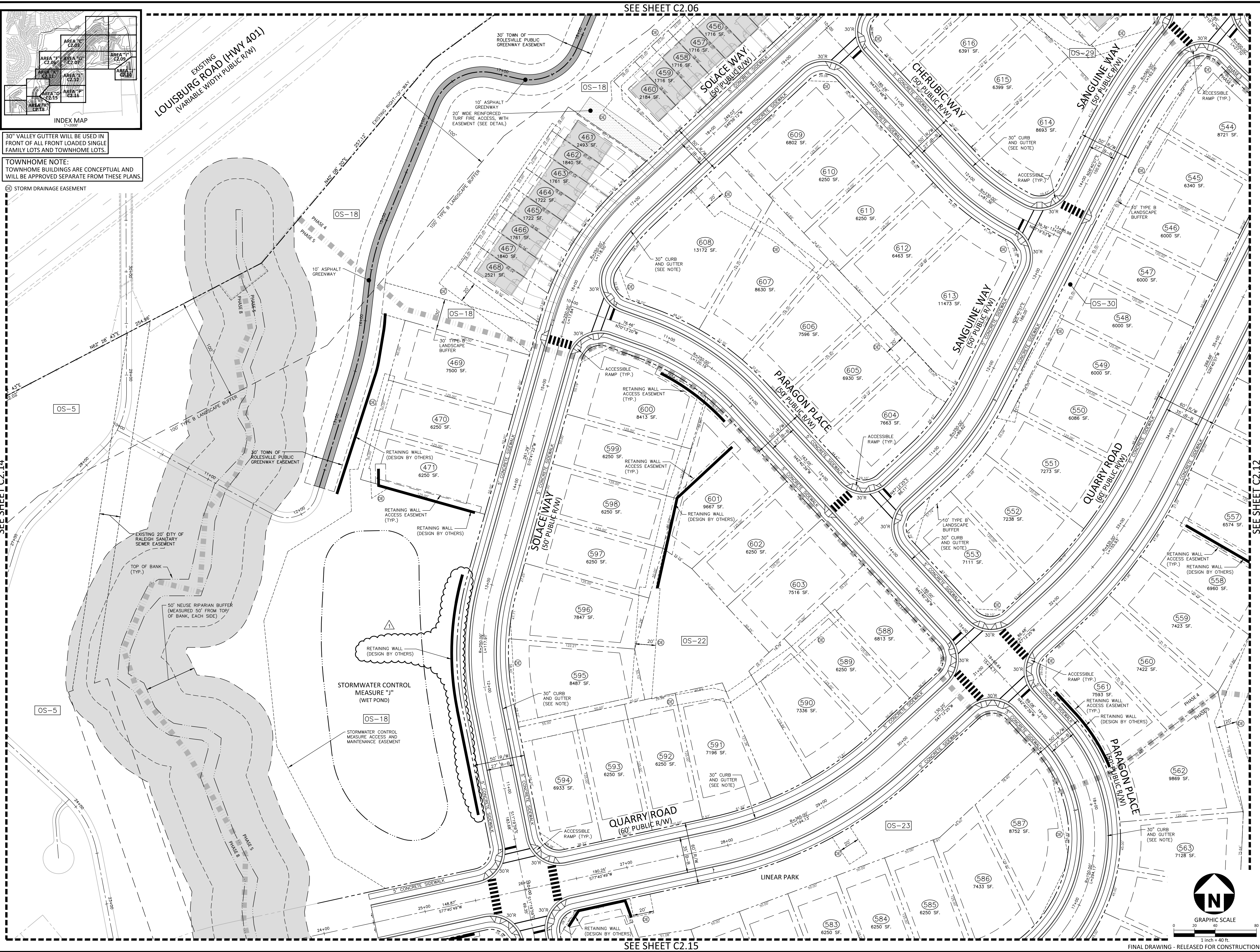


SEE SHEET C2.06



30" VALLEY GUTTER WILL BE USED IN FRONT OF ALL FRONT LOADED SINGLE FAMILY LOTS AND TOWNHOME LOTS.

TOWNHOME NOTE:
TOWNHOME BUILDINGS ARE CONCEPTUAL AND WILL BE APPROVED SEPARATE FROM THESE PLANS.

Ⓢ STORM DRAINAGE EASEMENT

SEE SHEET C2.14

SEE SHEET C2.12

M:\Projects\AWH\20000\04 Production\Engineering\Construction Drawings\AWH20000-CD-Pkg-02-51.dwg, 2/20/2024, 2:48:47 PM, Sherrill Williams



McADAMS
The John R. McAdams Company, Inc.
2905 Meridian Parkway
Durham, NC 27713
phone 919. 361. 5000
fax 919. 361. 2269
license number: C-0293, C-187
www.mcadamsco.com

CLIENT
ASHTON RALEIGH RESIDENTIAL, LLC.
900 RIDGEFIELD DRIVE, SUITE 335
RALEIGH, NORTH CAROLINA 27609
PHONE: 919. 422. 7663
CONTACT: BOB MISHLER



ASHTON WOODS.

THE POINT
PHASES 3, 4, 5, 7 AND 10
CONSTRUCTION DRAWINGS - PACKAGE 2
EAST YOUNG STREET
TOWN OF ROLESVILLE, WAKE FOREST TOWNSHIP,
WAKE COUNTY, NORTH CAROLINA
CD 20-08



REVISIONS

NO.	DATE	REV. POND, STORM DRAINAGE AND ADD WALL
1	02. 20. 2024	

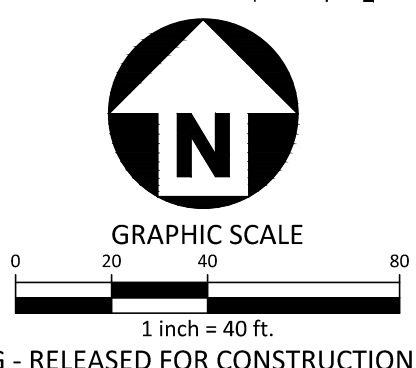
PLAN INFORMATION

PROJECT NO.	AWH-20000
FILENAME	AWH20000-CD-PKG-02-51
CHECKED BY	
DRAWN BY	
SCALE	1"=40'
DATE	05. 08. 2023

SHEET

SITE PLAN AREA "K"

C2.11



SEE SHEET C2.15

FINAL DRAWING - RELEASED FOR CONSTRUCTION