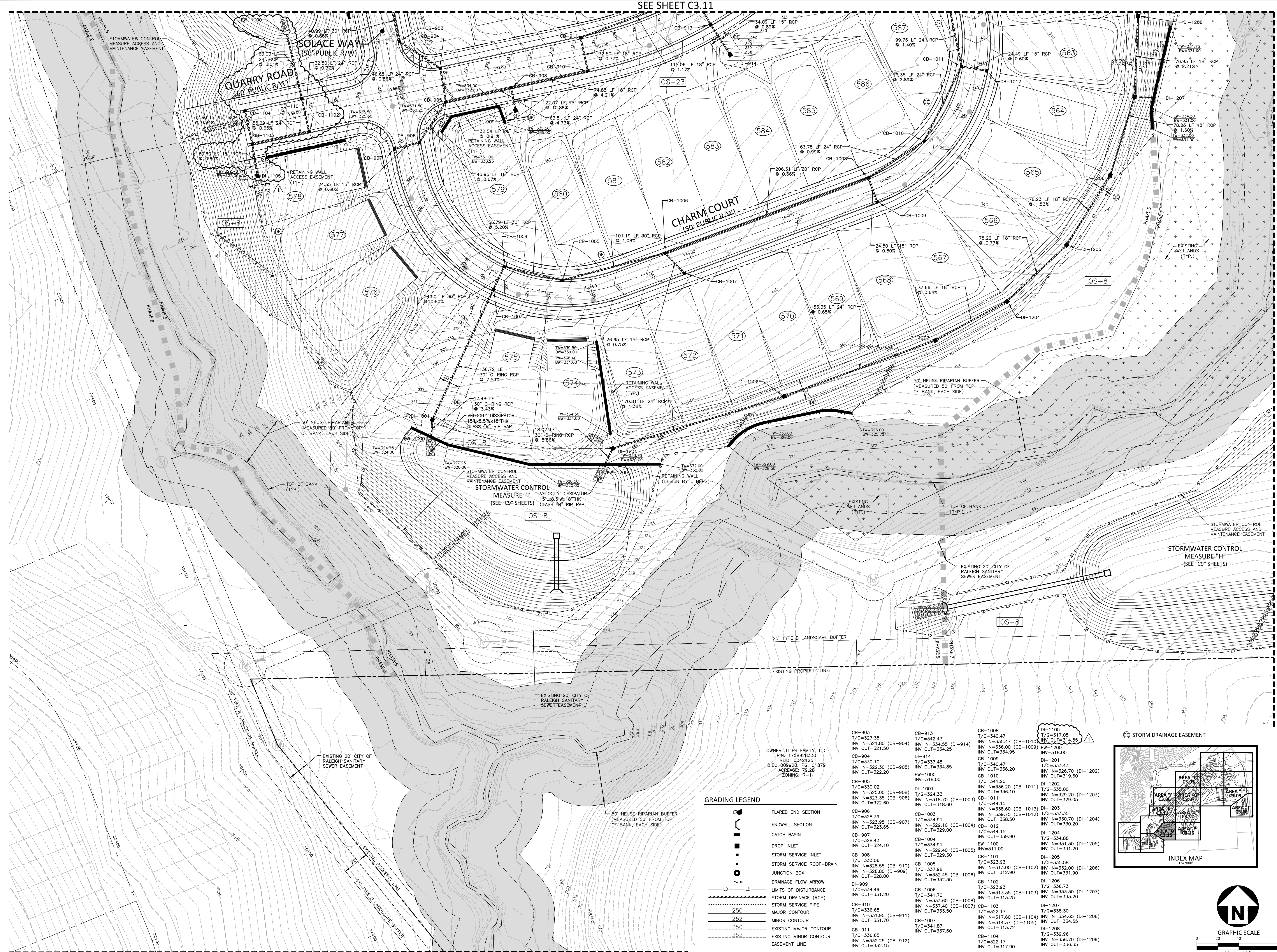


SEE SHEET C3.11



SEE SHEET C3.18

SEE SHEET C3.16



McADAMS

The John R. McAdams Company, Inc.
2905 Meridian Parkway
Durham, NC 27713

phone 919. 361. 5000
fax 919. 361. 2269
license number: C-0293, C-187

www.mcadamsco.com

CLIENT

ASHTON RALEIGH RESIDENTIAL, LLC.
900 RIDGEFIELD DRIVE, SUITE 335
RALEIGH, NORTH CAROLINA 27609
PHONE: 919. 422. 7663
CONTACT: BOB MISHLER



ASHTON WOODS.

THE POINT
PHASES 3, 4, 5, 7 AND 10
CONSTRUCTION DRAWINGS - PACKAGE 2
EAST YOUNG STREET
 TOWN OF ROLESVILLE, WAKE FOREST TOWNSHIP,
 WAKE COUNTY, NORTH CAROLINA

CD 20-08



REVISIONS

NO.	DATE	REV POND, STORM DRAINAGE AND ADD WALL
1	02.20.2024	

PLAN INFORMATION

PROJECT NO. AWH-20000
 FILENAME AWH20000-CD-PKG-02-G1
 CHECKED BY
 DRAWN BY
 SCALE 1"=40'
 DATE 05.08.2023

SHEET

GRADING AND STORM DRAINAGE PLAN AREA "O"

C3.15

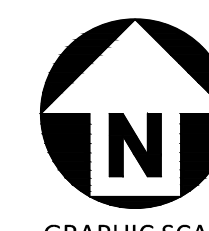
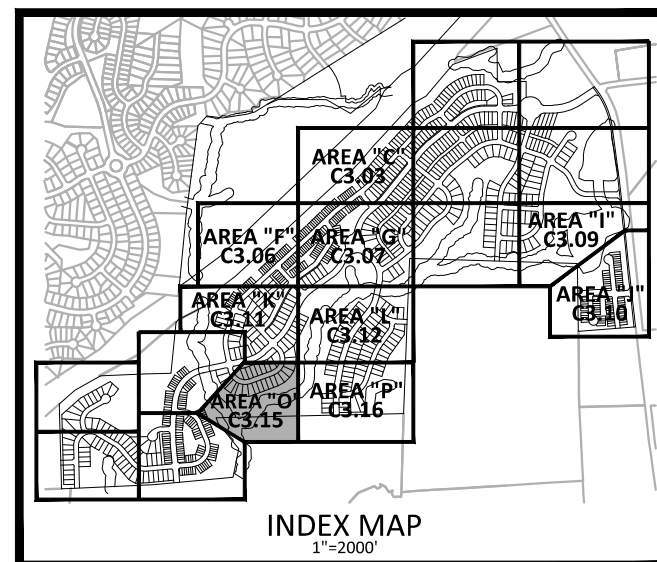
FINAL DRAWING - RELEASED FOR CONSTRUCTION

GRADING LEGEND

- FLARED END SECTION
- ENDWALL SECTION
- CATCH BASIN
- DROP INLET
- STORM SERVICE INLET
- STORM SERVICE ROOF-RAIN
- JUNCTION BOX
- DRAINAGE FLOW ARROW
- LIMITS OF DISTURBANCE
- STORM DRAINAGE (RCP)
- STORM SERVICE PIPE
- MAJOR CONTOUR
- MINOR CONTOUR
- EXISTING MAJOR CONTOUR
- EXISTING MINOR CONTOUR
- EASEMENT LINE

CB-903 T/C=327.35 INV IN=321.80 (CB-904) INV OUT=321.50	CB-913 T/C=342.43 INV IN=334.55 (DI-914) INV OUT=334.25	CB-1008 T/C=340.47 INV IN=335.47 (CB-1010) INV OUT=334.95	DI-1105 T/C=317.05 INV IN=314.55
CB-904 T/C=330.10 INV IN=322.30 (CB-905) INV OUT=322.20	DI-914 T/G=337.45 INV IN=322.34.85 EW=1000 INV=318.00	CB-1009 T/C=340.47 INV IN=336.20 CB-1010 T/C=341.20 INV IN=336.20 (CB-1011) CB-1011 T/C=335.00 INV IN=329.20 (DI-1203) CB-1012 T/C=344.15 INV IN=338.60 (CB-1013) CB-1013 T/C=339.75 (CB-1012) T/G=333.35 INV IN=330.70 (DI-1204) INV OUT=330.20	DI-1201 T/G=333.43 INV IN=326.70 (DI-1202) INV OUT=319.60
CB-905 T/C=330.02 INV IN=325.00 (CB-908) INV IN=323.35 (CB-906) INV OUT=322.60	DI-1001 T/G=324.33 INV IN=318.70 (CB-1003) INV OUT=318.60	DI-1202 T/G=334.15 INV IN=329.90 EW=1100 INV=311.00	DI-1202 T/G=335.00 INV IN=329.20 (DI-1203) INV OUT=329.05
CB-906 T/C=328.39 INV IN=323.95 (CB-907) INV OUT=323.65	CB-1003 T/C=334.91 INV IN=329.10 (CB-1004) INV OUT=329.00	CB-1101 T/C=333.93 INV IN=313.00 (CB-1102) INV IN=312.90 INV OUT=312.90	DI-1203 T/G=333.35 INV IN=330.70 (DI-1204) INV OUT=330.20
CB-907 T/C=328.43 INV IN=324.10 INV OUT=324.10	CB-1004 T/C=334.91 INV IN=329.40 (CB-1005) INV OUT=329.30	CB-1102 T/C=332.93 INV IN=333.60 (CB-1103) INV IN=332.45 (CB-1106) INV OUT=332.35	DI-1204 T/G=334.88 INV IN=331.30 (DI-1205) INV OUT=331.20
CB-908 T/C=333.06 INV IN=328.55 (CB-910) INV IN=328.80 (DI-909) INV OUT=328.00	CB-1005 T/C=337.88 INV IN=332.45 (CB-1006) INV OUT=332.35	CB-1103 T/C=332.17 INV IN=334.55 (DI-1105) INV IN=314.37 (DI-1105) INV OUT=313.72	DI-1205 T/G=335.58 INV IN=332.00 (DI-1206) INV OUT=331.90
DI-909 T/G=334.49 INV IN=331.90 INV OUT=331.20	CB-1103 T/C=334.70 (CB-1108) INV IN=333.50	CB-1104 T/C=332.17 INV IN=336.70 (DI-1105) INV IN=336.70 (DI-1105) INV OUT=317.90	DI-1206 T/G=336.73 INV IN=333.30 (DI-1207) INV IN=333.20 INV OUT=333.20
CB-910 T/C=336.65 INV IN=331.90 (CB-911) INV OUT=331.70	CB-1104 T/C=334.87 INV IN=333.60	CB-1105 T/G=339.96 INV IN=336.70 (DI-1209) INV OUT=336.35	DI-1207 T/G=338.30 INV IN=334.55 (DI-1208) INV IN=314.37 (DI-1105) INV OUT=334.55
CB-911 T/C=336.65 INV IN=332.25 (CB-912) INV OUT=332.15	CB-1105 T/C=341.87 INV IN=336.70	DI-1208 T/G=339.96 INV IN=336.70 (DI-1209) INV OUT=336.35	DI-1208 T/G=339.96 INV IN=336.70 (DI-1209) INV OUT=336.35

STORM DRAINAGE EASEMENT



M:\Projects\AWH\AWH-20000\04-Production\Engineering\Construction Drawings\AWH20000-CD-PKG-02-G1.dwg, 2/20/2024 2:46:00 PM, Sherrill Williams