

Legend

Evaluation Area

Potentially Jurisdictional Perennial Stream

Potentially Jurisdictional Intermittent Stream

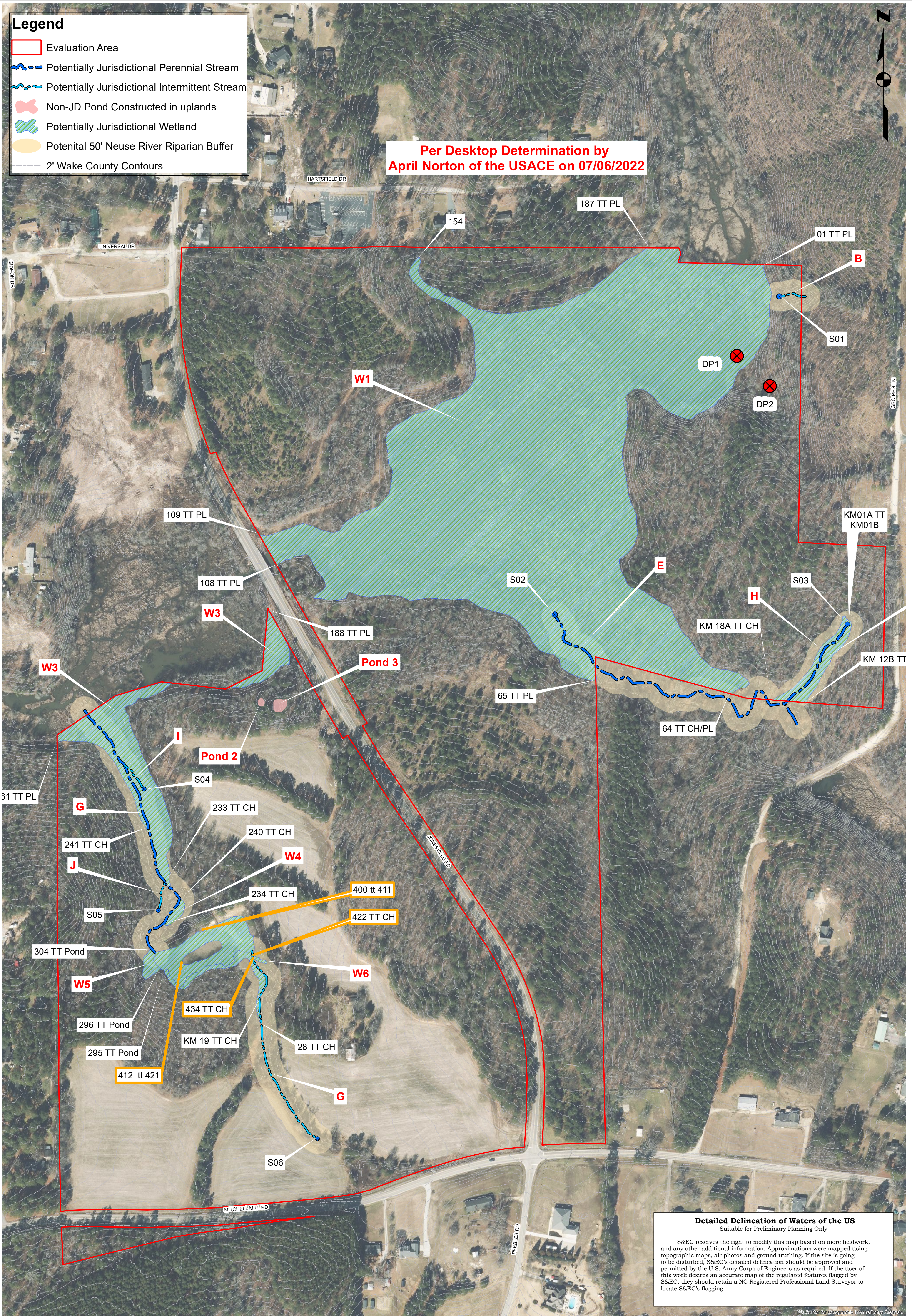
Non-JD Pond Constructed in uplands

Potentially Jurisdictional Wetland

Potenital 50' Neuse River Riparian Buffer

2' Wake County Contours

Per Desktop Determination by
April Norton of the USACE on 07/06/2022



Detailed Delineation of Waters of the US
Suitable for Preliminary Planning Only

S&EC reserves the right to modify this map based on more fieldwork, and any other additional information. Approximations were mapped using topographic maps, air photos and ground truthing. If the site is going to be disturbed, S&EC's detailed delineation should be approved and permitted by the U.S. Army Corps of Engineers as required. If the user of this work desires an accurate map of the regulated features flagged by S&EC, they should retain a NC Registered Professional Land Surveyor to locate S&EC's flagging.