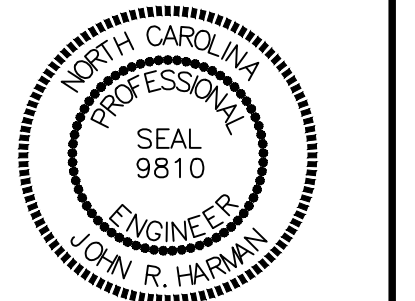


PRELIMINARY



FOR INFORMATION, ONLY

NO.	DATE	REVISION

STIPULATION FOR REUSE
 THIS DRAWING WAS PREPARED FOR USE ON THE SPECIFIC SITE, NAMED HEREON, CONTEMPORANEOUSLY WITH ITS ISSUE DATE AS LISTED, HEREON, AND IT IS NOT SUITABLE FOR USE ON A DIFFERENT PROJECT SITE OR AT A LATER TIME. USE OF THIS DRAWING FOR REFERENCE OR EXAMPLE ON ANOTHER PROJECT REQUIRES THE SERVICES OF PROPERLY LICENSED ARCHITECTS AND ENGINEERS. REPRODUCTION OF THIS DRAWING FOR REUSE ON ANOTHER PROJECT IS NOT AUTHORIZED AND MAY BE CONTRARY TO THE LAW.

**KALAS FALLS
 PHASE 1
 1832 ROLESVILLE ROAD
 WAKE COUNTY, NC**

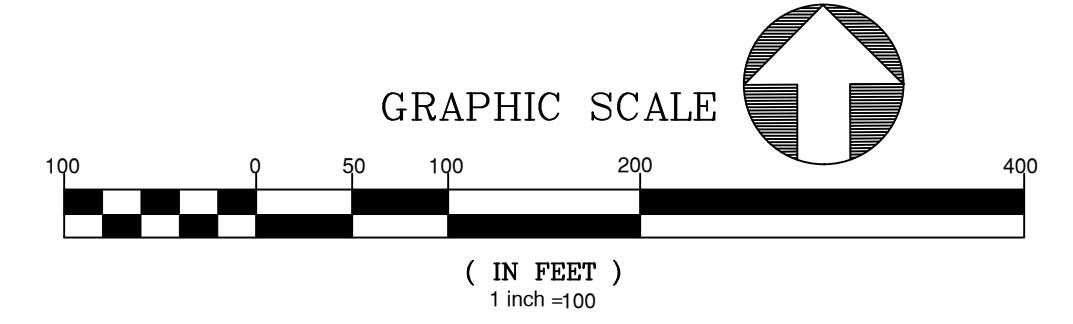
JOB NUMBER:	9900
CHECKED BY:	
DRAWN BY:	
DATE:	02-23-2021
SHEET TITLE:	
SHEET NO.:	

AMENITY PLANTING SCHEDULE

SYMB.	KEY	QUAN.	BOTANICAL NAME	COMMON NAME	SIZE	CONT.
TREES						
	CJR	18	Cryptomeria japonica 'Radicans'	Radicans Cryptomeria	2.5" Cal., 8' Ht.	B & B
	GBG	2	Ginkgo biloba 'Goldspire'	Goldspire Ginkgo	2.5" Cal., 8' Ht.	B & B
	POO	25	Prunus okame	Okame Cherry	2.5" Cal., 8' Ht.	B & B
	UPD	98	Ulmus parviflora 'Drake'	Drake Chinese Elm	2.5" Cal., 8' Ht.	B & B
	ZSV	165	Zelkova serrata 'Village Green'	Village Green Zelkova	2.5" Cal., 8' Ht.	B & B
SHRUBS						
	DEH	12	Distylium 'PIIDIST-I' PP #24,410	Emerald Heights Distylium	#3 Gal	Cont.

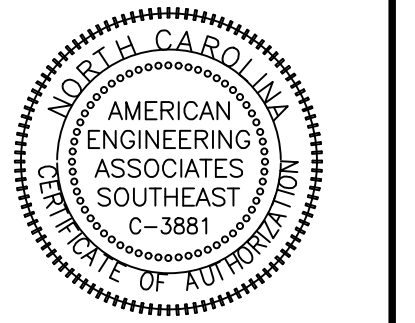
REQUIRED CALCULATIONS

TO MEET REQUIREMENTS WITHIN ARTICLE 14 OF THE TOWN OF ROLESVILLE UNIFIED DEVELOPMENT ORDINANCE

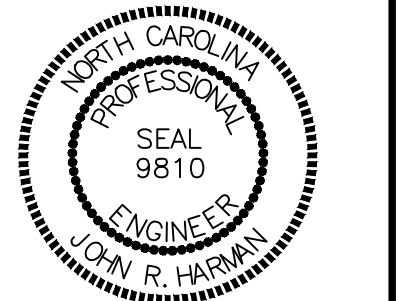


CITY OF RALEIGH - PLANS AUTHORIZED FOR CONSTRUCTION
 Electronic Approval: This approval is being issued electronically. This approval is valid only upon the signature of a City of Raleigh Review Officer below. The City will retain a copy of the approved plans. Any work authorized by this approval must proceed in accordance with the plans kept on file with the City. This electronic approval may not be edited once issued. Any modification to this approval once issued will invalidate this approval.
 City of Raleigh Development Approval _____
 Raleigh Water Review Officer _____

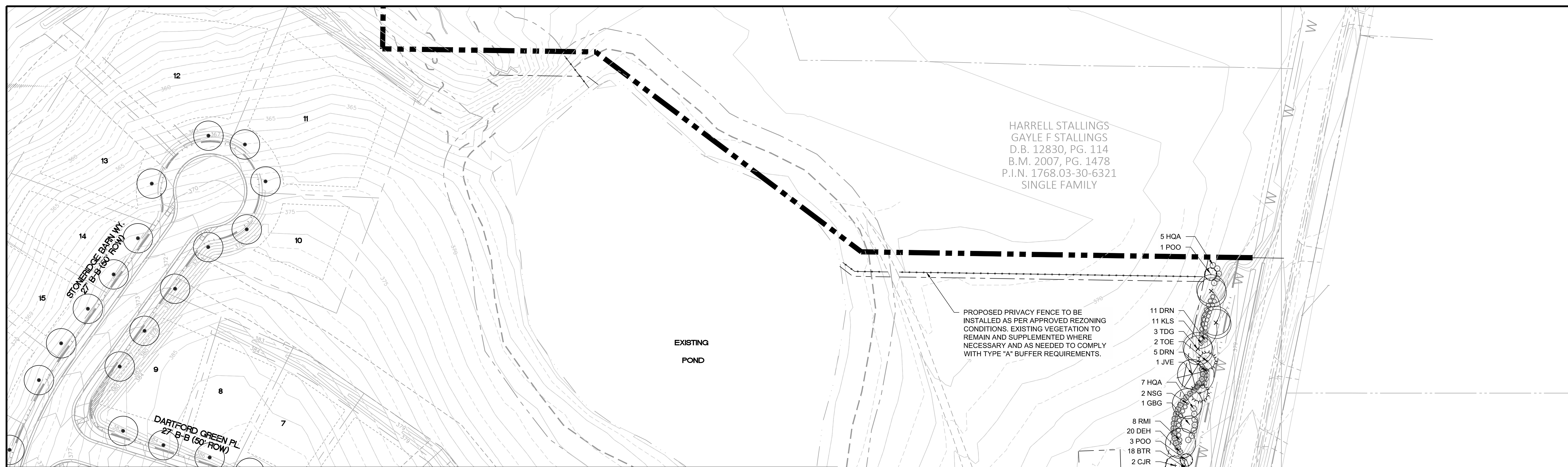




PRELIMINARY



FOR INFORMATION, ONLY

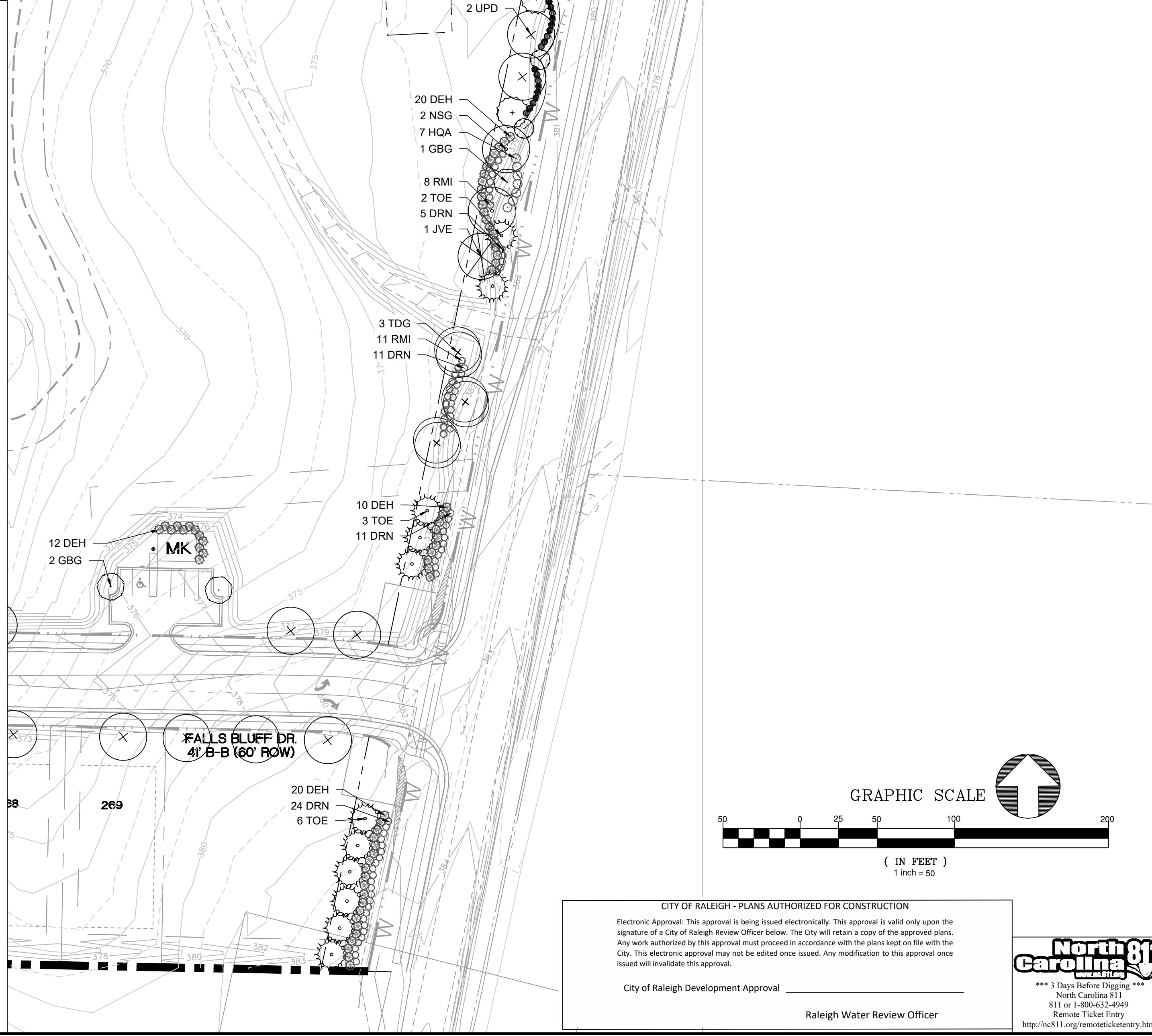


BUFFER PLANTING SCHEDULE

SYMB.	KEY	QUAN.	BOTANICAL NAME	COMMON NAME	SIZE	CONT.
TREES						
	CJR	2	Cryptomeria japonica 'Radicans'	Radicans Cryptomeria	2.5" Cal., 8' Ht.	B & B
	GBG	2	Ginkgo biloba 'Goldspire'	Goldspire Ginkgo	2.5" Cal., 8' Ht.	B & B
	JVE	2	Juniperus virginiana	Eastern Red Cedar	2.5" Cal., 8' Ht.	B & B
	NSG	4	Nyssa sylvatica 'Green Gable'	Green Gable Blackgum	2.5" Cal., 8' Ht.	B & B
	POO	4	Prunus okame	Okame Cherry	2.5" Cal., 8' Ht.	B & B
	TDG	6	Taxodium distichum 'Green Whisper'	Green Whisper Bald Cypress	2.5" Cal., 8' Ht.	B & B
	TOE	13	Thuja occidentalis 'Emerald Green'	Emerald Green Arbovitae	2.5" Cal., 8' Ht.	B & B
	UPD	2	Ulmus parviflora 'Drake'	Drake Chinese Elm	2.5" Cal., 8' Ht.	B & B
SHRUBS						
	BTR	18	Berberis thunbergii 'Rose Glow'	Rose Glow Barberry	#3 Gal	Cont.
	DEH	70	Distylium 'PIIDIST-I' PP #24,410	Emerald Heights Distylium	#3 Gal	Cont.
	DRN	67	Deutzia x rosea 'Nikko Blush'	Nikko Blush Deutzia	#3 Gal	Cont.
	HQA	19	Hydrangea quercifolia 'Alice'	Alice Oakleaf Hydrangea	#3 Gal	Cont.
	RMI	38	Rhamnus x 'Montic'	Indian Princess Hawthorne	#3 Gal	Cont.

REQUIRED CALCULATIONS

BUFFER YARD REQUIREMENTS ALONG ROLESVILLE ROAD:
TO MEET TYPE "A" BUFFER REQUIREMENTS



NO.	DATE	REVISION

STIPULATION FOR REUSE
THIS DRAWING WAS PREPARED FOR USE ON THE SPECIFIC SITE, NAMED HEREON, CONTEMPORANEOUSLY WITH ITS ISSUE DATE AS LISTED, HEREON, AND IT IS NOT SUITABLE FOR USE ON A DIFFERENT PROJECT SITE OR AT A LATER TIME. USE OF THIS DRAWING FOR REFERENCE OR EXAMPLE ON ANOTHER PROJECT REQUIRES THE SERVICES OF PROPERLY LICENSED ARCHITECTS AND ENGINEERS. REPRODUCTION OF THIS DRAWING FOR REUSE, ON ANOTHER PROJECT IS NOT AUTHORIZED AND MAY BE CONTRARY TO THE LAW.

**KALAS FALLS
PHASE 1
1832 ROLESVILLE ROAD
WAKE COUNTY, NC**

JOB NUMBER: 9900
CHECKED BY:
DRAWN BY:
DATE: 02-23-2021
SHEET TITLE:

SHEET NO.:

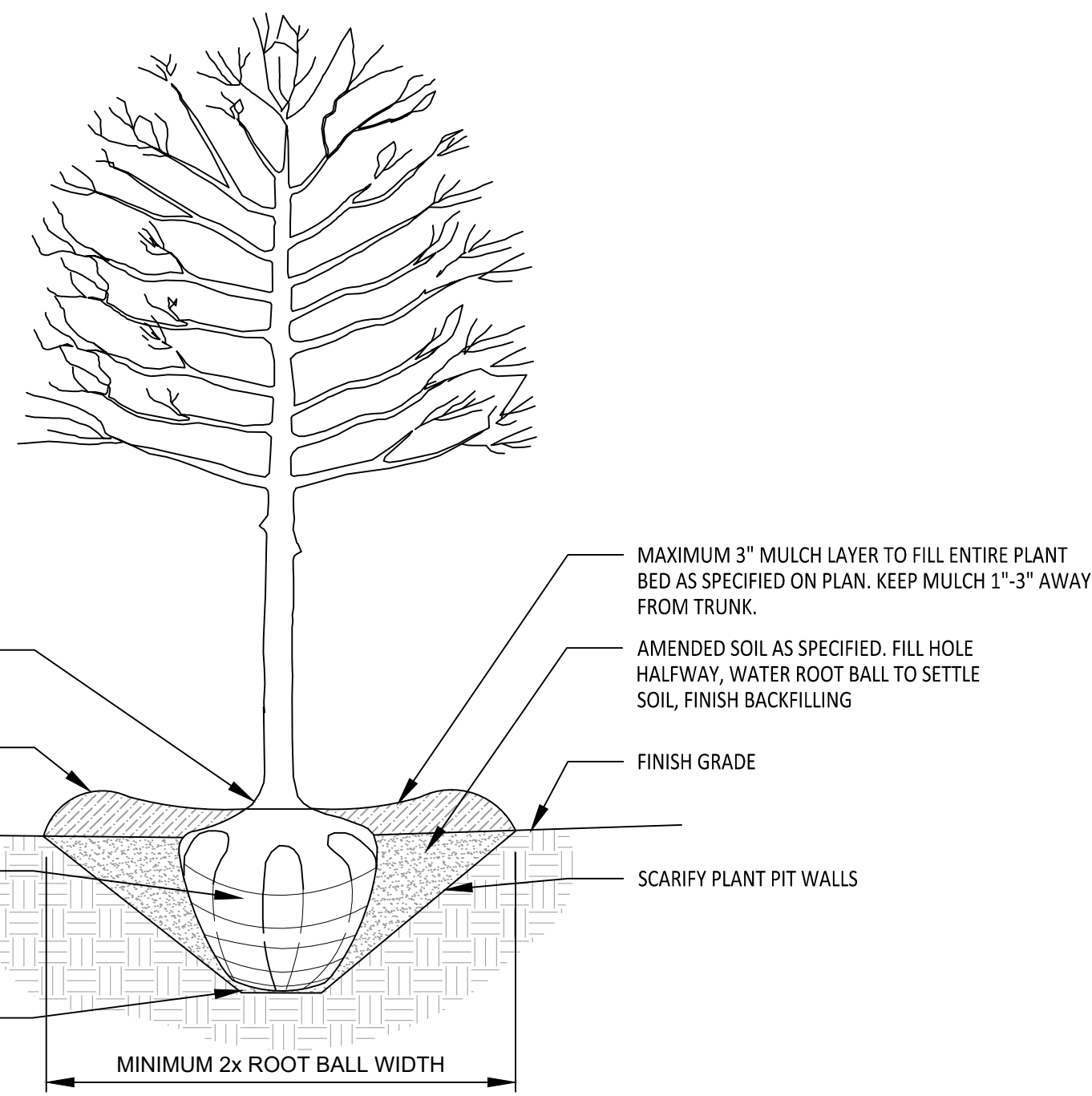
CITY OF RALEIGH - PLANS AUTHORIZED FOR CONSTRUCTION
Electronic Approval: This approval is being issued electronically. This approval is valid only upon the signature of a City of Raleigh Review Officer below. The City will retain a copy of the approved plans. Any work authorized by this approval must proceed in accordance with the plans kept on file with the City. This electronic approval may not be edited once issued. Any modification to this approval once issued will invalidate this approval.
City of Raleigh Development Approval _____
Raleigh Water Review Officer _____



PLANT DETAILS

NOTES

- REMOVE WIRE AND NYLON TWINE FROM BALL AND CANOPY.
- SOAK ROOT BALL AND PLANT PIT IMMEDIATELY AFTER INSTALLATION.
- DO NOT STAKE OR WRAP TRUNK UNLESS:
 - TREE HAS A LARGE CROWN
 - PLANTING SITE IS CONSISTENTLY WINDY OR IS A STEEP SLOPE
 - PLANTING SITE IS SUSCEPTIBLE TO VANDALISM.
- REMOVE ALL TAGS AND LABELS FROM PLANT MATERIAL.
- PRUNE DEAD, BROKEN, RUBBING OR CROSSING BRANCHES, AND ANY SUCKERS AFTER PLANTING. DO NOT TOP TREES.



ALL TREES SHALL MEET AMERICAN STANDARD FOR NURSERY STOCK (ANSI Z60.1-2004)

FOR EXAMPLE:	CALIPER	HEIGHT (RANGE)	MAX. HEIGHT	MIN. ROOT BALL DIA.	MIN. ROOT BALL DEPTH
	2"	12'-14'	16'	24"	16"
	3"	14'-16'	18'	32"	21"

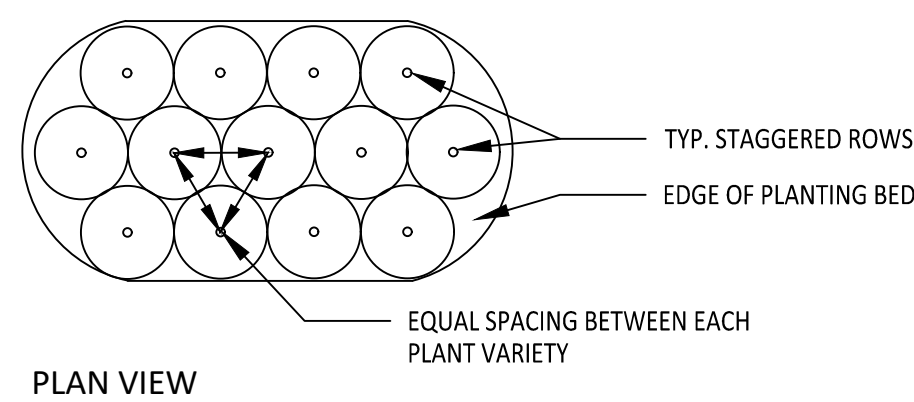
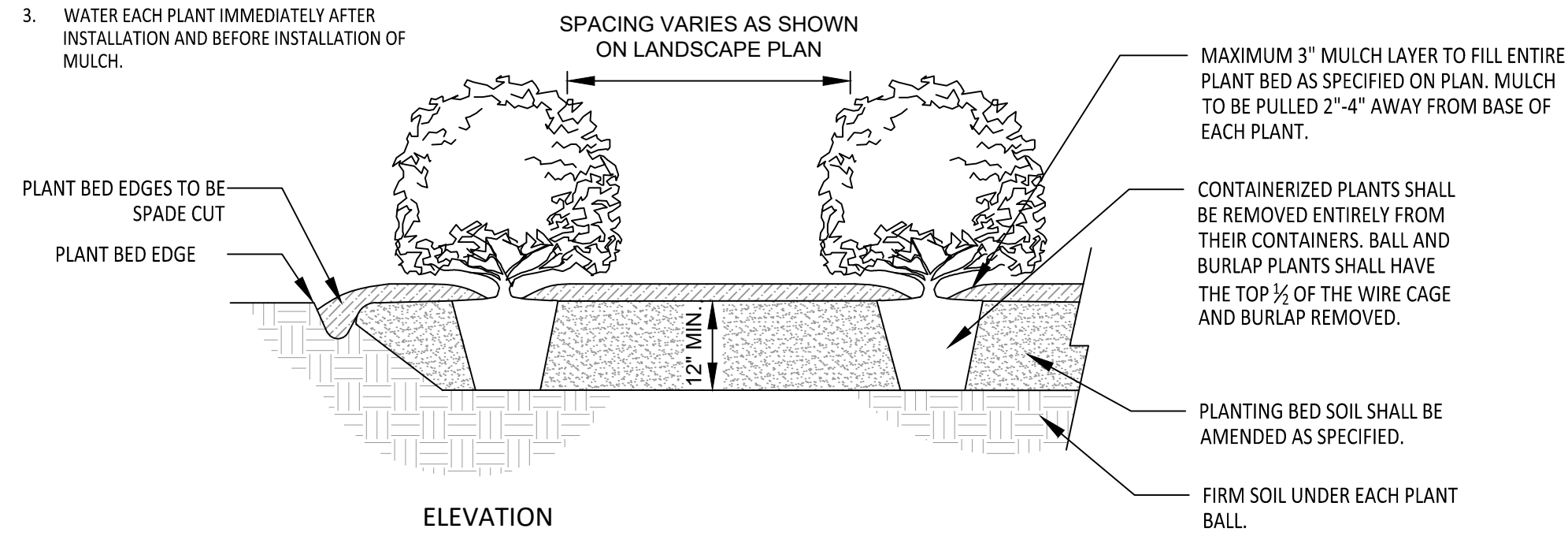
TYPICAL TREE PLANTING

(FOR SINGLE AND MULTI-STEM TREES)

NOT TO SCALE

NOTES

- SCARIFY ROOT MASS OF CONTAINERIZED PLANTS.
- PLANT ROOT BALL SHOULD BE INSTALLED 1"-3" MAXIMUM ABOVE FINISHED GRADE.
- WATER EACH PLANT IMMEDIATELY AFTER INSTALLATION AND BEFORE INSTALLATION OF MULCH.



TYPICAL SHRUB PLANTING

NOT TO SCALE

PLANT NOTES

PLANT INSTALLATION & MAINTENANCE NOTES:

- ALL LANDSCAPING SHALL BE OF NURSERY STOCK QUALITY AND SHALL BE INSTALLED IN A SOUND, WORKMANLIKE MANNER AND ACCORDING TO ACCEPTED GOOD PLANTING PROCEDURES.
- ALL LANDSCAPING SHALL BE ADAPTABLE TO CLIMATIC CONDITIONS OF THE AREA.
- LARGE TREES SHOULD NOT BE PLANTED WITHIN EASEMENTS AND A MINIMUM OF 6' FROM UTILITY LINES, UNLESS OTHERWISE SPECIFIED BY REVIEWING AGENCY. SHRUBS MAY BE PLANTED IN EASEMENTS, BUT A MINIMUM OF 3' FROM UTILITY LINES, UNLESS OTHERWISE SPECIFIED BY REVIEWING AGENCY.
- ALL LANDSCAPING SHALL BE MAINTAINED IN GOOD CONDITION.
- ALL LANDSCAPING SHALL AT ALL TIMES PRESENT A HEALTHY, NEAT, CLEAN, ORDERLY, DISEASE-FREE AND PEST-FREE APPEARANCE.
- ALL LANDSCAPING SOIL AND FILL SHALL BE FREE FROM WEEDS, REFUSE, AND DEBRIS AT ALL TIMES.
- EXCESS SOIL SHALL BE DISPOSED OF IN A LEGAL MANNER.
- ANY DEAD PLANT MATERIAL OR MATERIAL THAT FAILS TO SHOW HEALTHY GROWTH MUST BE REMOVED WITHIN 30 DAYS.
- REPLACEMENT OF REMOVED PLANT MATERIAL MUST TAKE PLACE WITHIN 90 DAYS OF REMOVAL OR NOTIFICATION BY THE CITY, WHICHEVER OCCURS FIRST.
- ANY REPLACEMENT PLANT MATERIAL MUST MEET THE SIZE AND OTHER CHARACTERISTICS OF NEWLY PLANTED MATERIAL.
- IF USING STAKES AND GUYWS SUCH SUPPORTS SHALL BE DESIGNED SO AS TO PROTECT TREES AND SHRUBS FROM INJURY. TREES AND SHRUBS SHALL BE FASTENED TO THE SUPPORT WITH AN ACCEPTABLE COMMERCIAL TREE TIE OF PLASTIC OR HOSE-COVERED WIRE. AFTER THE WARRANTY PERIOD HAS ENDED, STAKES AND GUYWS SHALL BE REMOVED.
- CONTRACTOR IS RESPONSIBLE TO CONTACT MISS UTILITIES (811) 48 HOURS PRIOR TO COMMENCEMENT OF WORK. CONTACT LANDSCAPE ARCHITECT IF FIELD CONFLICTS/DISCREPANCIES ARISE.
- CONTRACTOR RESPONSIBLE TO VERIFY PLANT COUNTS. PLANTING PLAN SHALL GOVERN IN THE CASE OF A CONFLICT.
- ALL PLANTS SHALL MEET OR EXCEED STANDARDS AS DETERMINED BY THE AMERICAN STANDARD OF NURSERY STOCK.
- CONTRACTOR SHALL WARRANTY ALL PLANTS FOR A PERIOD OF ONE YEAR FROM DATE OF FINAL ACCEPTANCE.
- WHEN POSSIBLE, PLANTING SHALL BE INSTALLED BETWEEN SEPTEMBER 1 - JUNE 30TH AND IN FAVORABLE WEATHER CONDITIONS. WHEN PLANTING MUST BE PERFORMED OUTSIDE OF SPECIFIED DATES, PLANTS MUST BE WATERED ON A REGULAR BASIS TO ENSURE VIABILITY.
- PLANT VARIETIES, SIZES AND LAYOUT SHALL CONFORM ACCURATELY TO THE LANDSCAPE PLAN. CONTACT LANDSCAPE ARCHITECT FOR FIELD CONFLICTS.
- DISTURBED AREAS SHALL BE SEEDED ACCORDING TO THE NOTES FOUND ON THIS PAGE.
- PLANT SUBSTITUTIONS SHALL BE BROUGHT TO THE ATTENTION OF AND APPROVED BY LANDSCAPE ARCHITECT PRIOR TO INSTALLATION.
- MULCH USED ON-SITE SHALL BE OF A NON-DYED, NATURAL HARDWOOD VARIETY TO BE INSTALLED AT A MAXIMUM DEPTH OF 3", MINIMUM DEPTH OF 2".

TOPSOIL / PLANTING MIX MINIMUM REQUIREMENTS:

- TOPSOIL/PLANTING MIX SHOULD BE NATURAL, FERTILE, AGRICULTURAL SOIL CAPABLE OF SUSTAINING VIGOROUS PLANT GROWTH. IT SHOULD BE UNIFORM COMPOSITION THROUGHOUT, WITH ADMIXTURE OF SUBSOIL. IT SHOULD BE FREE OF STONES, LUMPS, LIVE PLANTS AND THEIR ROOTS, STICKS AND OTHER EXTRANEIOUS MATTER. TOPSOIL SHOULD NOT BE USED WHILE IN A FROZEN OR MUDDY CONDITION.

CLAY (RED CLAY, WELL PULVERIZED)	MINIMUM 10%; MAXIMUM 35%
COMPOST*/ORGANIC	MINIMUM 5%; MAXIMUM 10%
SILT	MINIMUM 30%; MAXIMUM 50%
COARSE SAND (FREE OF ROCKS, 0.5 TO 1.0 MM F)	MINIMUM 30%; MAXIMUM 45%
- ORGANIC MATERIAL SUCH AS SAWDUST OR LEAF MOLD THAT HAS COMPLETED THE DECOMPOSITION PROCESS
- RECOMMENDATIONS:
- ALL PLANTING AREAS SHOULD BE TESTED FOR PROPER DRAINAGE. DRAINAGE SHOULD BE CORRECTED AS NECESSARY TO INSURE PROPER TREE GROWTH AND SURVIVAL. THE FOLLOWING LEVEL OF NUTRIENT ELEMENTS IS RECOMMENDED FOR PROPER GROWTH:

CALCIUM	55 - 80%
MAGNESIUM	10 - 30%
POTASSIUM	5 - 8%

SEEDING SCHEDULE FOR LAWNS & SLOPES (MAXIMUM 3:1):

DATE	TYPE	PLANTING RATE
AUG 15 - NOV 1	TALL FESCUE	300 LBS/ACRE
NOV 1 - MAR 1	TALL FESCUE AND ABRUZZI RYE	300 LBS/ACRE OR ANNUAL RYE
MAR 1 - APR 15	TALL FESCUE OR HARD FESCUE	300 LBS/ACRE
MAR 1 - JUL 15	HULLED COMMON BERMUDA GRASS OR HYBRID BERMUDA GRASS OR CENTIPEDE GRASS OR ZOYSIA GRASS OR ST. AUGUSTINE GRASS	200 LBS/ACRE
APR 15 - JUN 30	WEeping LOVE GRASS OR BAHIA GRASS	25 LBS/ACRE
JUL 1 - AUG 15	TALL FESCUE AND *** BROWNTOP MILLET OR OR SORGHUM-SUDAN HYBRIDS	120 LBS/ACRE 35 LBS/ACRE 30 LBS/ACRE



PRELIMINARY



NO. DATE REVISION:

STIPULATION FOR REUSE

THIS DRAWING WAS PREPARED FOR USE ON THE SPECIFIC SITE, NAMED HEREON, CONTEMPORANEOUSLY WITH ITS ISSUE DATE AS LISTED, HEREON, AND IT IS NOT SUITABLE FOR USE ON A DIFFERENT PROJECT SITE OR AT A LATER TIME. USE OF THIS DRAWING FOR REFERENCE OR EXAMPLE ON ANOTHER PROJECT REQUIRES THE SERVICES OF PROPERLY LICENSED ARCHITECTS AND ENGINEERS. REPRODUCTION OF THIS DRAWING FOR REUSE ON ANOTHER PROJECT IS NOT AUTHORIZED AND MAY BE CONTRARY TO THE LAW.

KALAS FALLS
PHASE 1
1832 ROLESVILLE ROAD
WAKE COUNTY, NC

JOB NUMBER: 9900

CHECKED BY:

DRAWN BY:

DATE: 02-23-2021

SHEET TITLE:

SHEET NO.:

CITY OF RALEIGH - PLANS AUTHORIZED FOR CONSTRUCTION

Electronic Approval: This approval is being issued electronically. This approval is valid only upon the signature of a City of Raleigh Review Officer below. The City will retain a copy of the approved plans. Any work authorized by this approval must proceed in accordance with the plans kept on file with the City. This electronic approval may not be edited once issued. Any modification to this approval once issued will invalidate this approval.

City of Raleigh Development Approval _____

Raleigh Water Review Officer



*** 3 Days Before Digging ***

North Carolina 811
811 or 1-800-632-4949
Remote Ticket Entry
http://nc811.org/remoteticketentry.htm