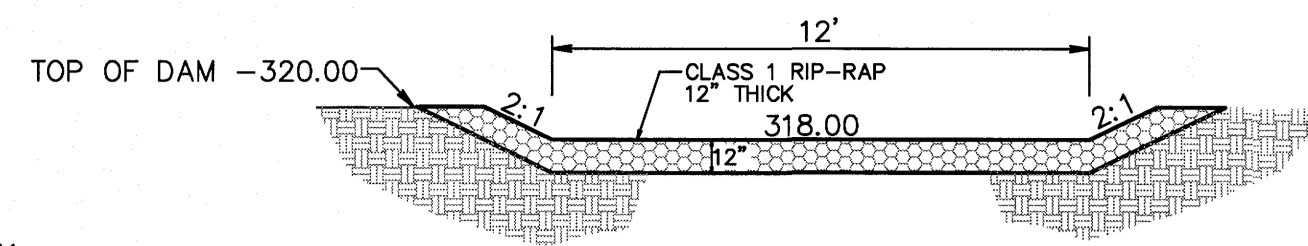
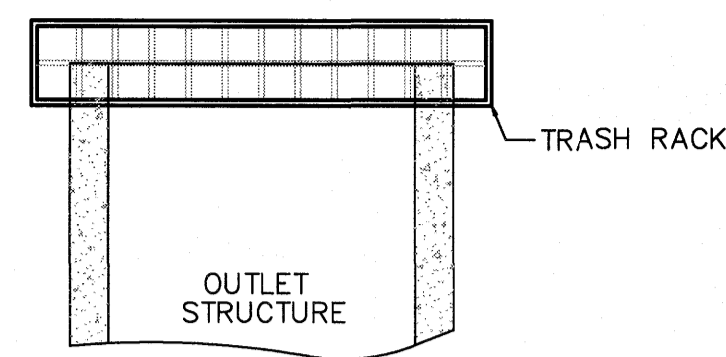


TRASH RACK DETAIL
N.T.S.



EMERGENCY SPILLWAY CROSS-SECTION

WET POND #2B
BOTTOM EL- 310.00
NORMAL POOL- 313.50
TOP OF DAM- 320.00

PLANT LIST LITTORAL SHELF PLANT SCHEDULE:

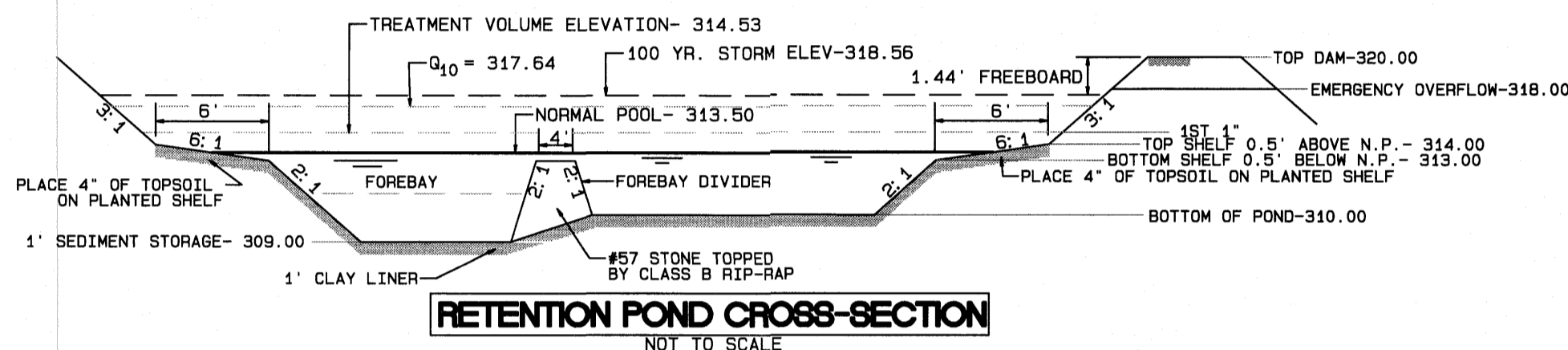
Code	Plant Name	Quantity	Spacing
EF	EUPATORIUM FISTRULOSUM	4-6"	POT @ 3' SPACING
HC	HIBISCUS COCCINEA	4-6"	POT @ 3' SPACING
C6	CHELONE GLABRA	4-6"	POT @ 3' SPACING
LC	LOBELIA CARDINALIS	4-6"	POT @ 3' SPACING
JOE	JOE PYE WEED	4-6"	POT @ 3' SPACING
SCAR	SCARLET ROSE MALLOW	4-6"	POT @ 3' SPACING
WHITE	WHITE TURTLEHEAD	4-6"	POT @ 3' SPACING
CARD	CARDINAL FLOWER	4-6"	POT @ 3' SPACING
JUNC	JUNCUS EFFUSES	4-6"	POT @ 3' SPACING
ACOR	ACORUS SPP	4-6"	POT @ 3' SPACING
IRIS	IRIS VERSICOLOR	4-6"	POT @ 3' SPACING
PECK	PECKEREL WEED	4-6"	POT @ 3' SPACING
ARROW	ARROW ARUM	4-6"	POT @ 3' SPACING

LANDSCAPE PLAN:
SHALLOW LAND= 1,731 sf (USE 433 PLANTS FROM LIST ABOVE)
SHALLOW WATER= 1,663 sf (USE 416 PLANTS FROM LIST ABOVE)
USE EQUAL NUMBER OF PLANTS FROM LIST ABOVE

CALCULATION: 50 PLANTS PER 200 SF

TRASH RACK NOTES

- TRASH RACK SHALL BE 6" CLEAR OF STRUCTURE TOP AND SIDES. THE TRASH RACK NEED NOT COVER THE TREATMENT OUTLET PIPE.
- IF STRUCTURE FEATURES ANY WEIR NOTCHES THE TRASH RACK WILL EXTEND 5" BELOW THE NOTCHES. (SEE CROSS-SECTION OF THE OUTLET STRUCTURE.)
- TRASH RACK SHALL BE FASTENED TO EACH SIDE OF THE STRUCTURE AT AT LEAST 2 POINTS. IT SHALL BE EASILY REMOVED FOR MAINTENANCE OR ENTRY INTO THE STRUCTURE.
- TRASH RACK SHALL ACCOMMODATE VALVE SHAFT THROUGH AN OPENING.
- TRASH RACK SHALL BE MADE OF DURABLE MATERIAL WHICH WILL NOT RUST OR DETERIORATE IN SUNLIGHT.
- MAX. OPENING IN TRASH RACK SHALL BE 6"x6".
- TOP OF TRASH RACK SHALL HAVE A GRID OF BARS (MAX. 5"x5").



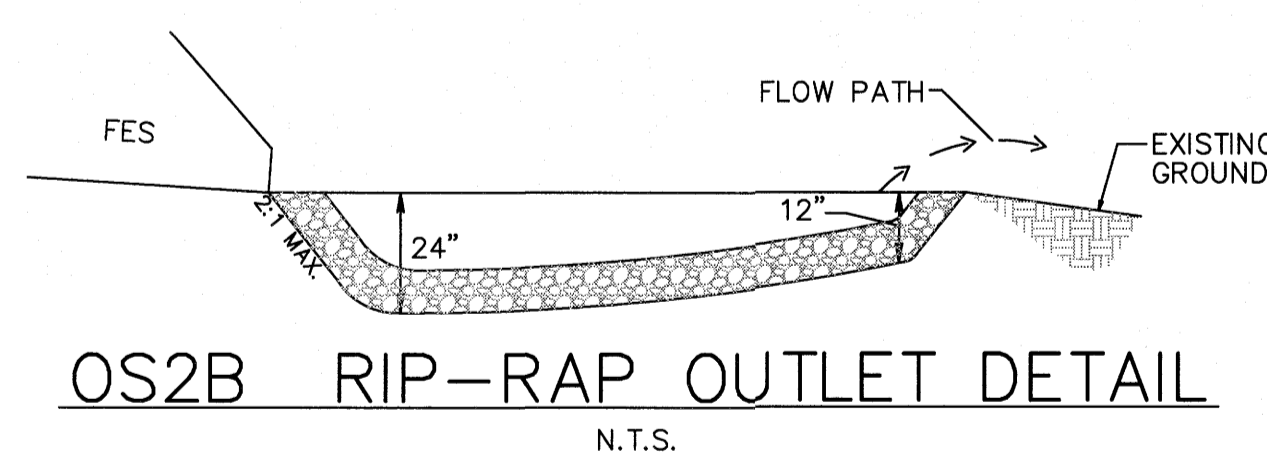
RETENTION POND CROSS-SECTION
NOT TO SCALE

OUTLET STRUCTURE GENERAL NOTES

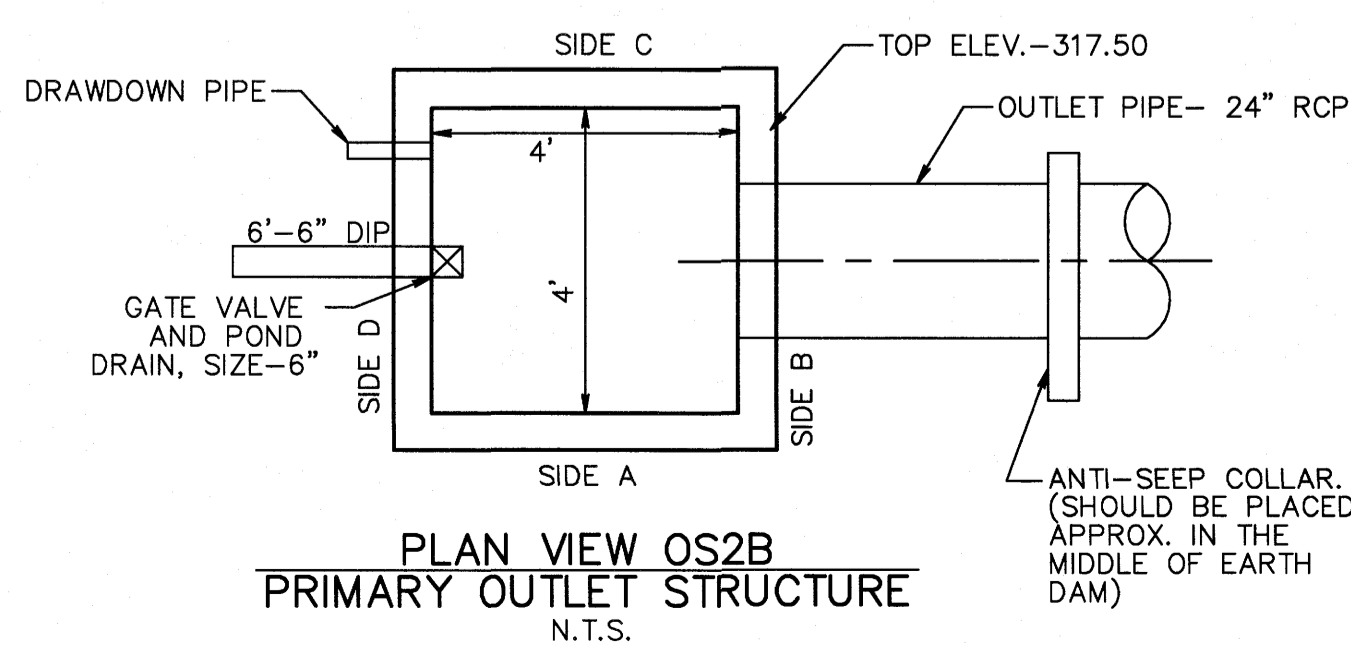
- OUTLET STRUCTURE ELEVATIONS SHOWN ON THE DETAILS ON THIS SHEET ARE CRITICAL AND MUST BE WITHIN 0.02' OF THAT SHOWN. IF OUTLET STRUCTURES ARE PRE-CAST OFF-SITE, THE HOLE FOR THE OUTLET PIPE SHALL BE ENLARGED TO ALLOW UP TO 0.3' OF VERTICAL MOVEMENT. WHEN INSTALLED, THE EXCESS OPENING SHALL BE FILLED WITH GROUT.
- THE OUTLET STRUCTURE SHALL HAVE A TRASH RACK COVERING THE OPENINGS. SUCH TRASH RACK SHALL BE 6" OUT FROM THE OPENING AND SHALL HAVE A MAXIMUM OPENING OF 6"x6". IT SHALL BE SECURELY FASTENED TO THE STRUCTURE BUT REMOVEABLE FOR MAINTENANCE.
- OUTLET PIPES SHALL HAVE AN ANTI-SEEP COLLAR OF CONCRETE LOCATED APPROXIMATELY UNDER THE MIDDLE OF THE DAM IN WHICH IT IS LOCATED. IT SHALL CONSIST OF CONCRETE POURED AROUND THE PIPE IN A VERTICAL DIRECTION. THE COLLAR SHALL BE A SQUARE 8" THICK AND SHALL EXTEND 18" BEYOND THE OUTSIDE OF THE PIPE IN EACH DIRECTION.
- TREATMENT OUTLET PIPE SHALL NOT BE PVC BUT OTHER MATERIAL SUCH AS GSP WHICH IS NOT SUBJECT TO DETERIORATION IN SUNLIGHT.

POND NOTES

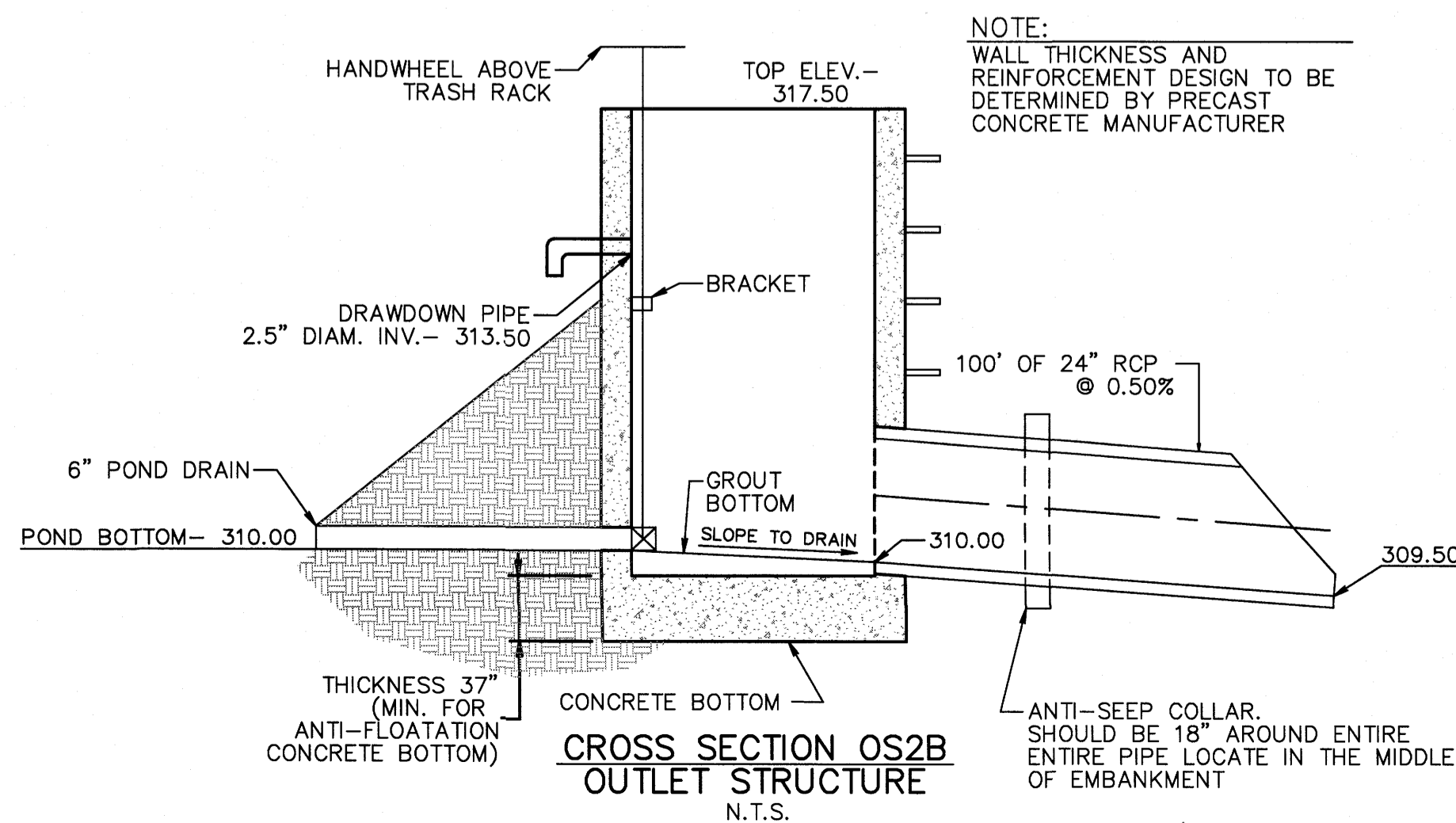
- SEE SHEET 3.0 FOR BMP CONVERSION SEQUENCE.
- FOREBAY DIVIDERS ARE TO BE INSTALLED WHILE CONVERTING FROM SEDIMENT BASIN TO WET POND.



OS2B RIP-RAP OUTLET DETAIL
N.T.S.

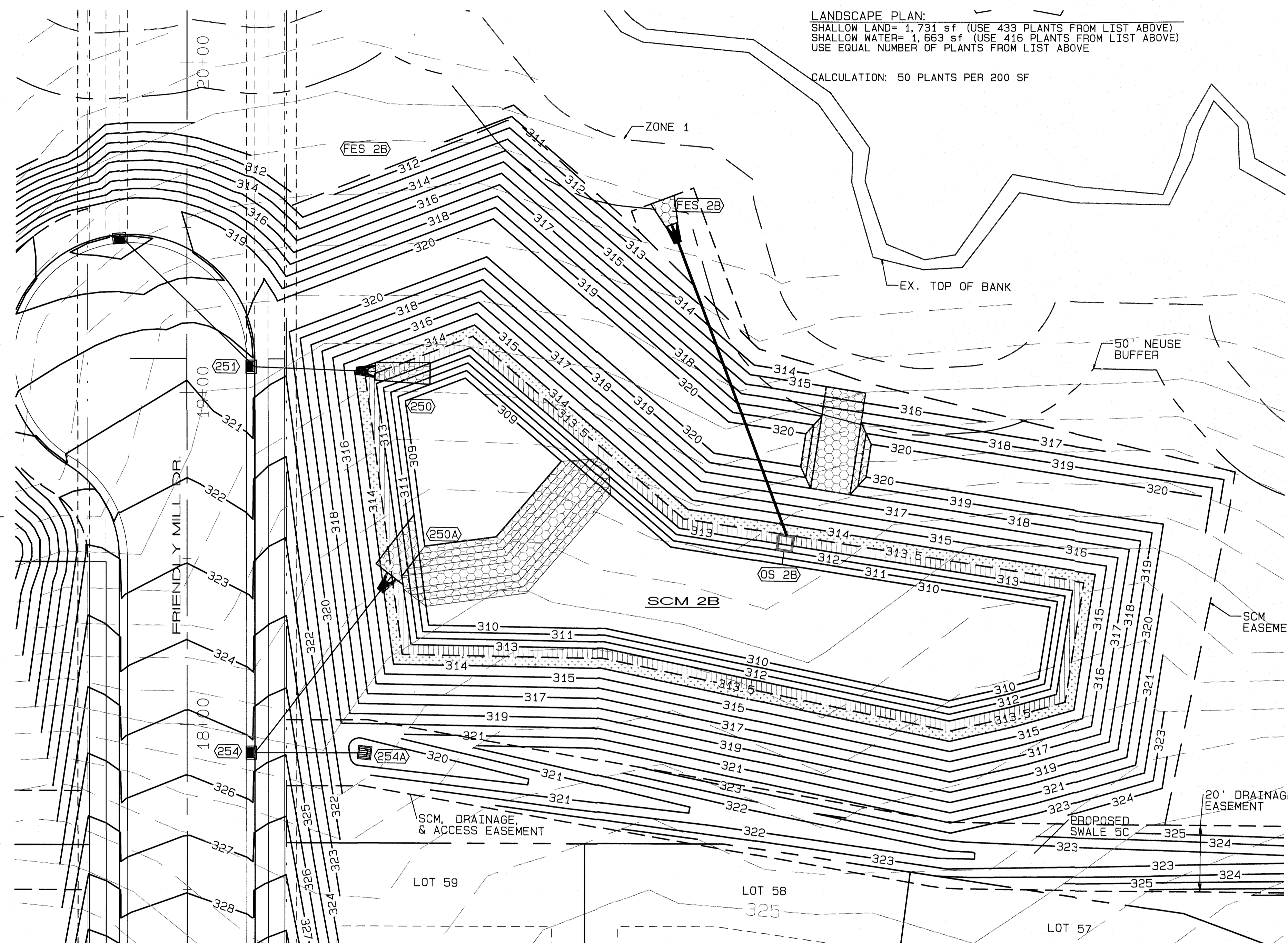
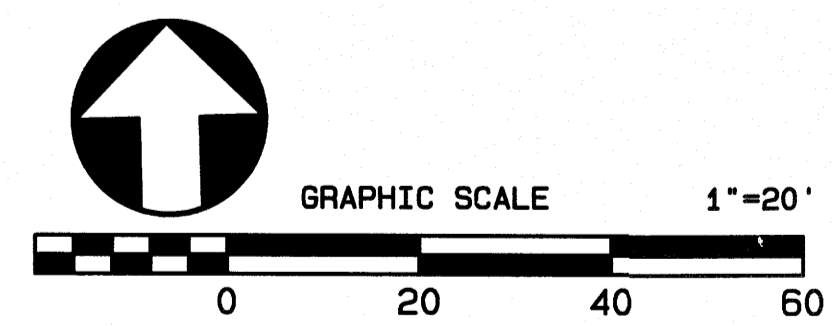


PLAN VIEW OS2B PRIMARY OUTLET STRUCTURE
N.T.S.



CROSS SECTION OS2B OUTLET STRUCTURE
N.T.S.

NOTE:
WALL THICKNESS AND REINFORCEMENT DESIGN TO BE DETERMINED BY PRECAST CONCRETE MANUFACTURER



NO.	DATE	REVISION
1	11-20-20	UPDATED PLAN PER TOR COMMENTS
2	07-18-21	REVISIONS PER TOR CONSULTANT REVIEW
3	07-18-21	FINAL SET

SCM 2B DETAILS
FOR
KALAS FALLS PHASE 1
SITUATED AT
1832 ROLESVILLE ROAD
WAKE COUNTY, NORTH CAROLINA
FIRM # C-3881

JOB NUMBER: 9900
CHECKED BY: JRH
DRAWN BY: BAH
DATE: 4/24/2020

AMERICAN Engineering
American Engineering Associates-Southeast, P.A.
4020 Westchase Blvd. Ste. 450
Raleigh, NC 27607 919-469-1101

7-15-21
SEAL 9810
SHEET NO.
4.9