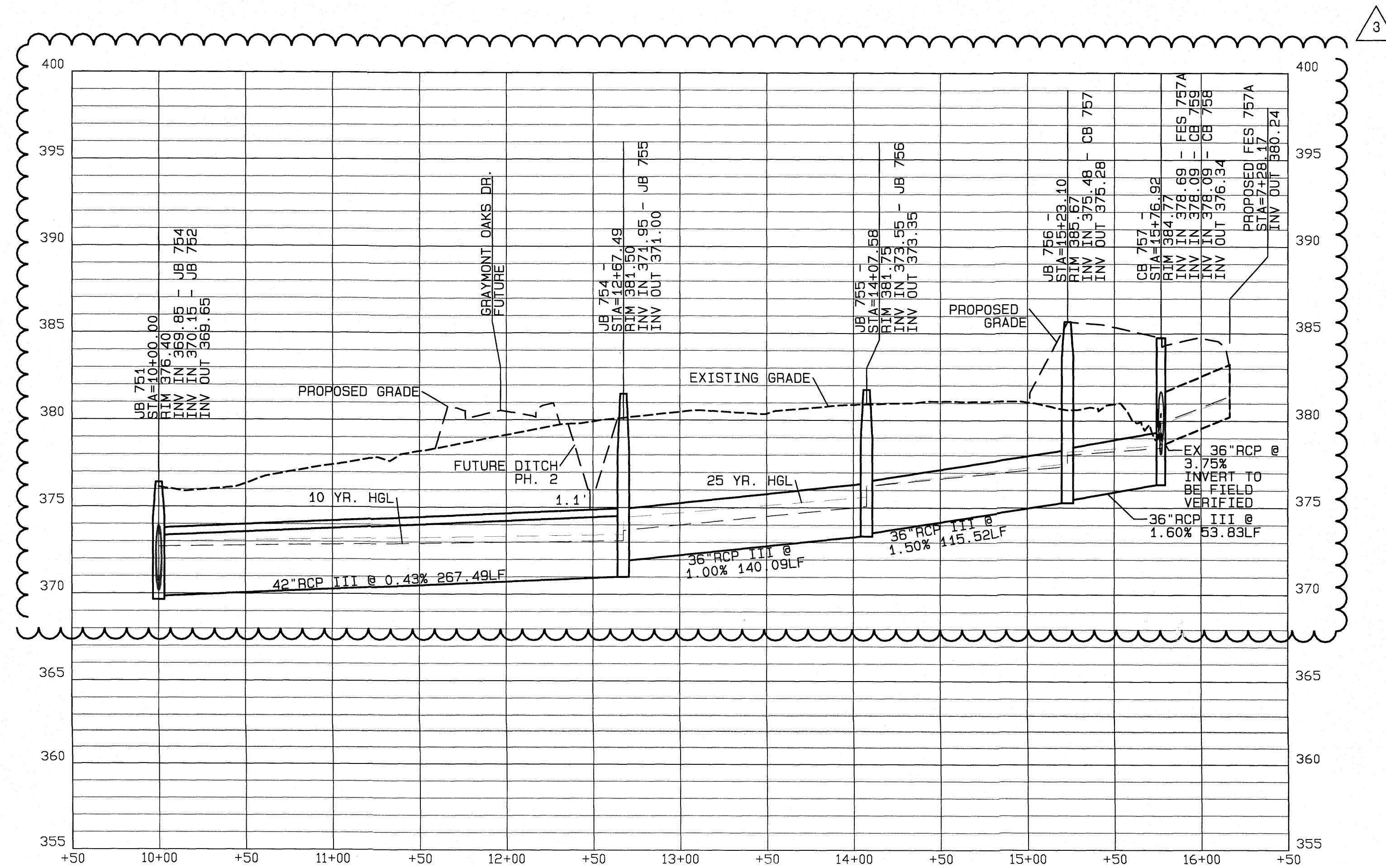


FES 757A TO JB 751



FILE: Z:\udbs\9900\Watkins Property\dwg\Phase Map\Kalas Falls Base Phase 1.dwg T:\line: B: 22AM 10/19/2021

No.	DATE	REVISION
1	05/10/21	ADDRESSING FOR CONSULTING COMMENTS
2	10/18/21	PROFILE UPDATES, PRELIM PHASE 2, GRADING REVISIONS.
3	10/18/21	PROFILE UPDATES, PRELIM PHASE 2, GRADING REVISIONS.

ROLESVILLE ROAD OFF-SITE STORM PLAN AND PROFILES FOR KALAS FALLS SITUATED AT 1832 ROLESVILLE ROAD WAKE COUNTY, NORTH CAROLINA FIRM # C-3881

JOB NUMBER:
CHECKED BY:
DRAWN BY:
DATE:

AMERICAN Engineering
American Engineering Associates-Southeast, P.A.
4020 Westchase Blvd., Suite 450
Raleigh, NC 27607 919-469-1101

Professional Engineer Seal
10-18-21
SHEET NO. 18.3