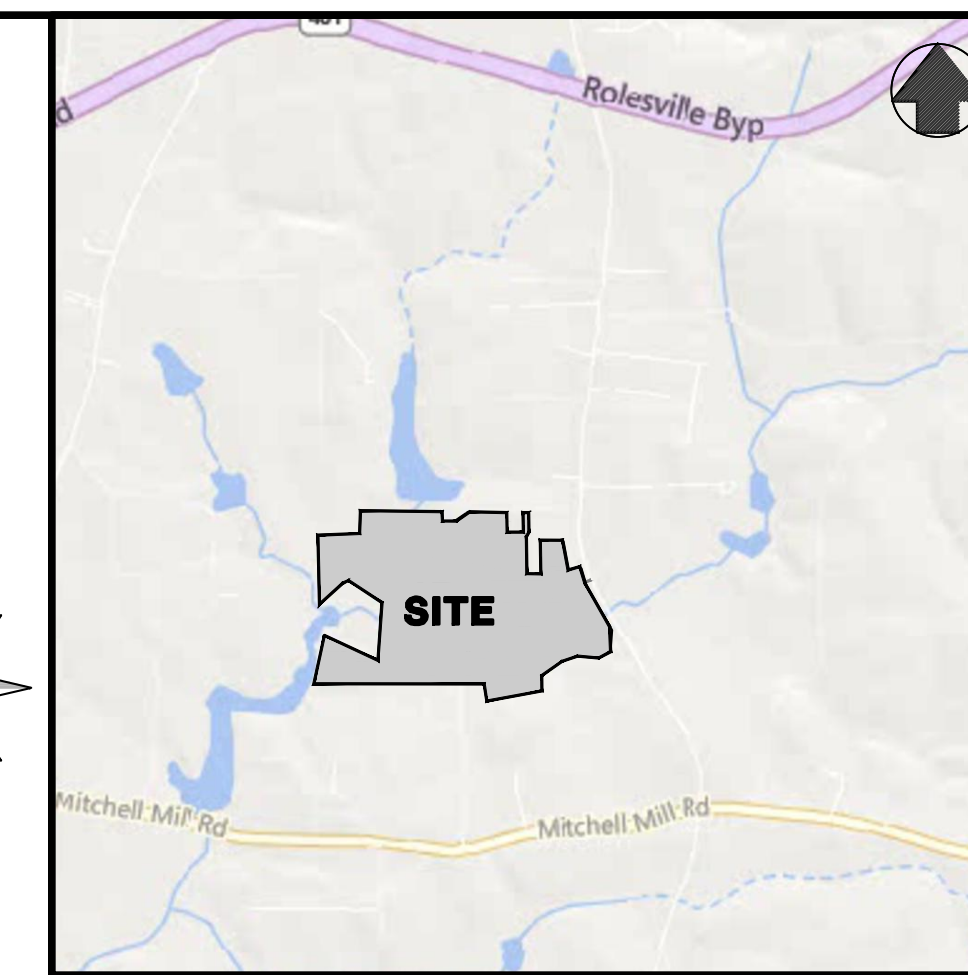


REZONING AND ANNEXATION FOR JONESVILLE ROAD

ROLESVILLE, NORTH CAROLINA



VICINITY MAP
SCALE: 1" = 2000'

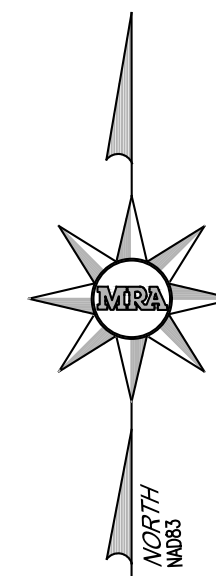
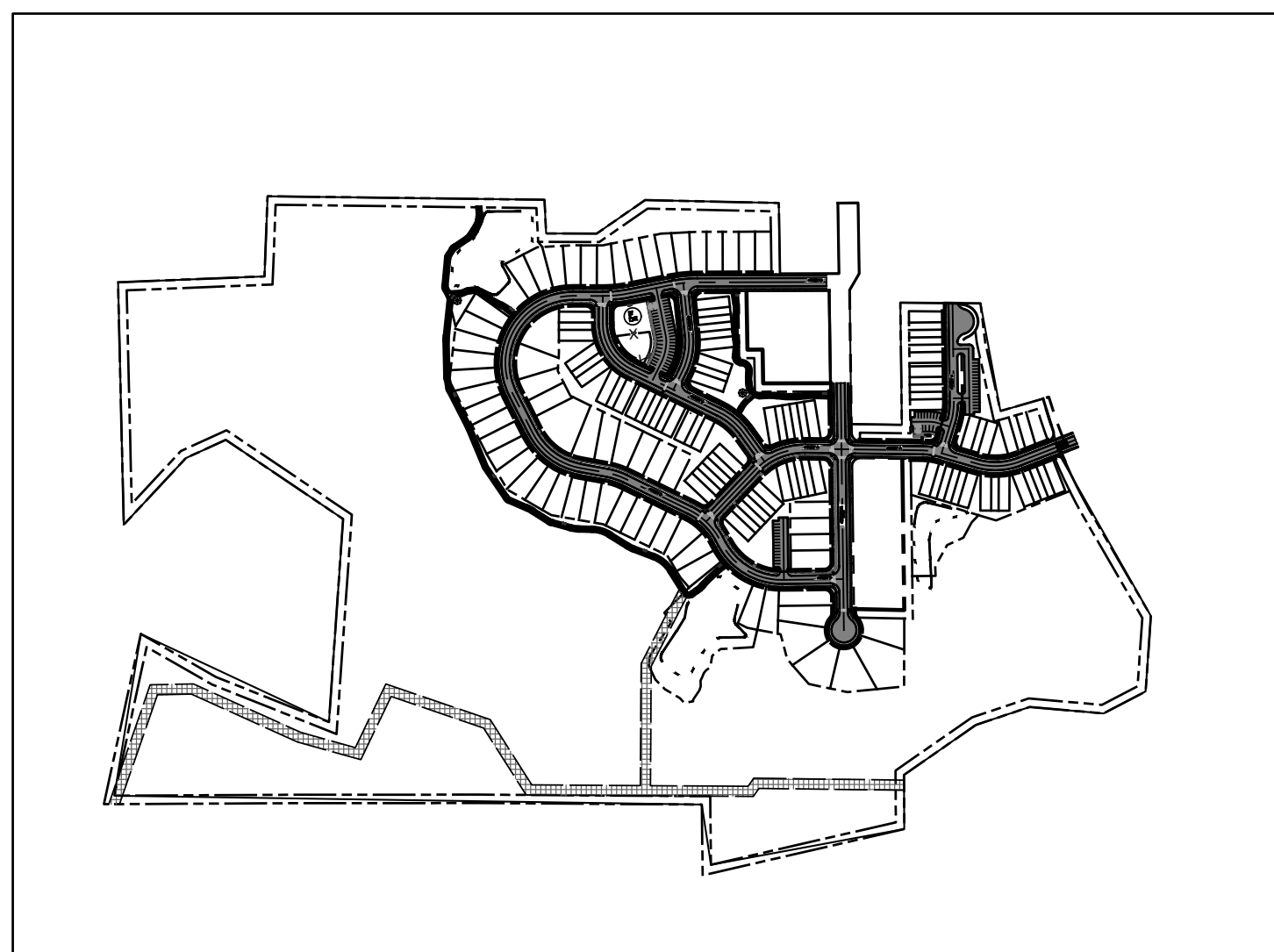
AGENCY CONTACTS

A. Town of Rolesville
Planning Department
502 Southtown Circle
Rolesville, NC 27571
Contact: Meredith Gruber
Phone: (919) 554-6517
Email: meredith.gruber@rolesville.nc.gov

B. Wake County
Watershed Management
Waverly F. Akins Building
337 S. Salisbury St
Raleigh, NC 27601
Contact: Karyn Pageau
Phone: (919)-796-8769
Email: karyn.pageau@wakegov.com

C. City of Raleigh Public Utilities Department
One Exchange Plaza
Suite 620
Raleigh, NC 27601
P.O. Box 590
Raleigh, NC 27602
Phone: 919-996-3245
Email: publicutilityinfo@raleighnc.gov

D. NCDOT
Division 5, District 1 Office
4009 District Drive
Raleigh, NC 27607
Contact: Amy Neldringhaus, District Engineer
Phone: 919-733-3213
Email: anneldringhaus@ncdot.gov



KEY MAP

SCALE: 1" = 500'



SCALE 1" = 500'

SITE DATA

OWNER	CHEN, PING 10020 GREEN LEVEL CHURCH RD STE 802 CARY, NC 27514	
PIN	175121701, 1751915216, 1751915365, 1751915464, 1751915215, 1751915665, 1751915165, 1751915665, 1751915415, 175196064, 1751984512, 1751989512, 1751989016, 1751919013, 1751919104, 1751919303, 1751919490, 1751411554, 1751989344	
DEED BOOK/PAGE/MAP	018453/00623/1151 01, 018453/00942/1151 01	
CURRENT ZONING	R30	
PROPOSED ZONING	RM, RH	
MIN. LOT SIZE	5000 SQ FT (SINGLE FAMILY CLUSTER) 2000 SQ FT (TOWNHOMES)	
LAND USE	RESIDENTIAL	
PROPOSED DEVELOPMENT	145 UNITS 64 SINGLE FAMILY UNITS 81 TOWNHOUSE UNITS	
TOTAL SITE AREA	43.23 ACRES	
PROPOSED DENSITY	TOWNHOMES (RH) 4.0 UNITS/AC (MAX) 5.76 UNITS/AC (PROVIDED)	
	SINGLE FAMILY (RM) 5.0 UNITS/AC (MAX) (CLUSTER) 0.67 UNITS/AC (PROVIDED)	
FLOOD PLAIN/ZONE	ZONE AE/ZONE X	
FIRM PANEL NO.	312075100J	
WATERSHED PROTECTION	NONE	
MINIMUM LOT WIDTH	20' TOWNHOMES 40' SINGLE FAMILY (CLUSTER)	
OPEN SPACE	RESIDENTIAL HIGH DENSITY: PASSIVE: 2.10 (REQUIRED) 14.26 (PROVIDED) RESIDENTIAL MEDIUM DENSITY: PASSIVE: 4.70 (REQUIRED) 44.09 (PROVIDED) IMPROVED OPEN SPACES: REQUIRED: SMALL: 1 MEDIUM: 2 LARGE: 0 SMALL: 1 0.54 AC (TOTAL PROVIDED) MEDIUM: 1 1.01 AC (TOTAL PROVIDED) LARGE: 1 13.74 AC (TOTAL PROVIDED)	
PARKING	REQUIRED: 2.0/DWELLING UNIT PLUS 0.25 GUEST SPACES/DWELLING UNIT 81 UNITS X 2.25 = 183 SPOTS PROVIDED: 81 UNITS X 1 (DRIVEWAY) = 81 SPOTS PARKING LOTS = 111 SPOTS TOTAL PROVIDED = 192 SPOTS	
SETBACKS	TOWNHOMES: FRONT: 15' SIDE: 10' REAR: 15' SINGLE FAMILY (CLUSTER): FRONT: 20' SIDE: 5' REAR: 20'	

PROJECT TEAM

DEVELOPER/
OWNER: THE CSC GROUP LLC
10020 GREEN LEVEL CHURCH RD STE 802
CARY, NC 27514
ATTN: PING CHENG
919-798-0424

LAND PLANNERS,
CIVIL ENGINEER: MORRIS & RITCHIE ASSOCIATES OF NC, PC
5605 CHAPEL HILL ROAD, SUITE 112
RALEIGH, NC 27607
ATTN: MR. JEREMY M KEENEY, PE, PLS

SURVEYOR: MORRIS & RITCHIE ASSOCIATES OF NC, PC
5605 CHAPEL HILL ROAD, SUITE 112
RALEIGH, NC 27607
ATTN: MR. JEREMY M KEENEY, PE, PLS

ENVIRON.
CONSULTANT: MORRIS & RITCHIE ASSOCIATES OF NC, PC
5605 CHAPEL HILL ROAD, SUITE 112
RALEIGH, NC 27607
ATTN: MR. JAMIE B. GUERRERO, PE, CPSWQ

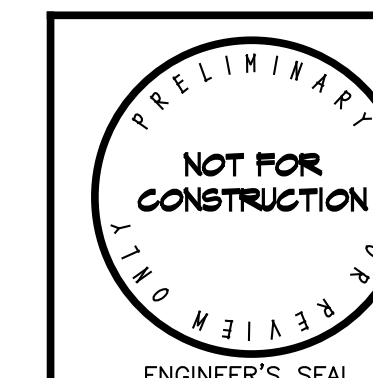
FOR SITE PLAN REVIEW ONLY
NOT FOR CONSTRUCTION
PLAN IS SUBJECT TO REVISIONS
DURING THE CONSTRUCTION
APPROVAL PROCESS

Sheet List Table

Sheet Number	Sheet Title	Date	Revised Date
C0.0	COVER - REZONING		
C0.1	EXISTING CONDITIONS		
C1.0	OVERALL SITE PLAN		
C1.1	SITE PLAN - SHEET 1 OF 6		
C1.2	SITE PLAN - SHEET 2 OF 6		
C1.3	SITE PLAN - SHEET 3 OF 6		
C1.4	SITE PLAN - SHEET 4 OF 6		
C1.5	SITE PLAN - SHEET 5 OF 6		
C1.6	SITE PLAN - SHEET 6 OF 6		
C1.7	OVERALL ZONING PLAN		

STREET DATA

STREET A	1200 LF
STREET B	2369 LF
STREET C	450 LF
STREET D	743 LF



COVER - REZONING
FOR
JONESVILLE ROAD

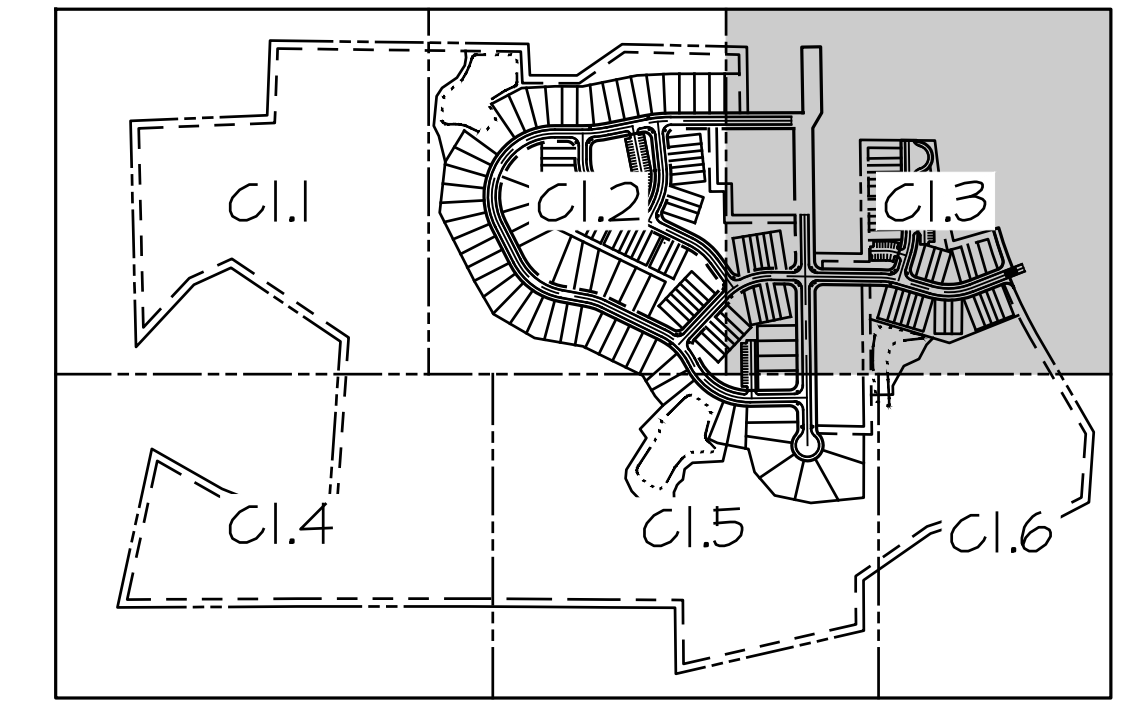
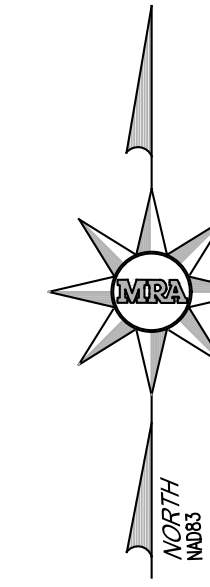
TOWN OF ROLESVILLE WAKE COUNTY, NORTH CAROLINA

No.	DATE	REVISIONS
		JOB NO. 21790
		SCALE: AS SHOWN
		DATE: 6/1/2022
		ENGINEER: JMK
		DRAWN BY: ER/JJM
		DESIGN BY: DC
		REVIEW BY: JMK

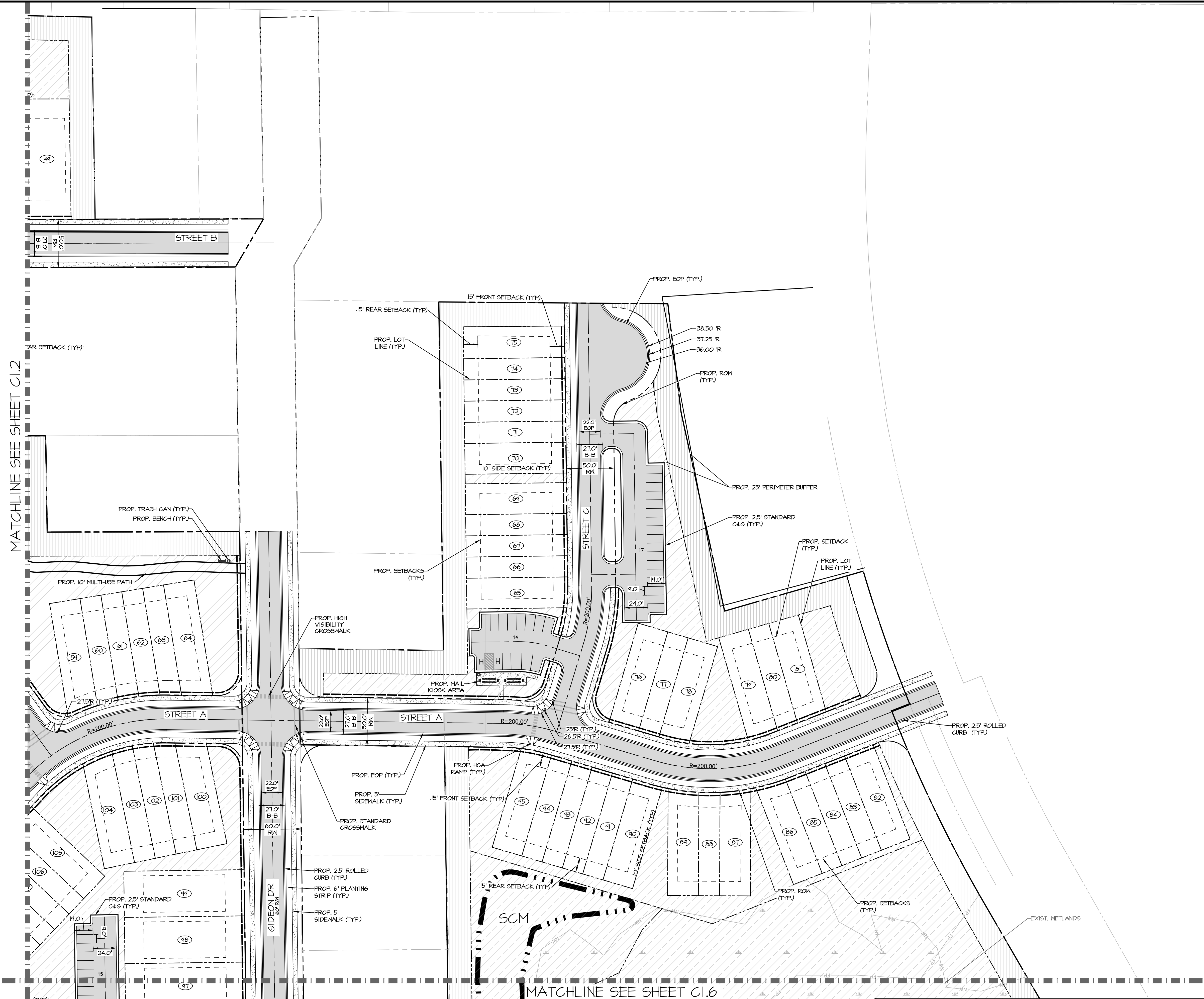


MORRIS & RITCHIE ASSOCIATES OF NC, PC
ENGINEERS, ARCHITECTS, PLANNERS, SURVEYORS AND LANDSCAPE ARCHITECTS
5605 CHAPEL HILL RD. STE 112
RALEIGH, NC 27607
(984) 200-2103
LICENSE # C-4182
WWW.MRAGTA.COM
© 2022 MORRIS & RITCHIE ASSOCIATES, INC.

STATUS: PRELIMINARY NOT FOR CONSTRUCTION REVISION: -- SHEET: C0.0

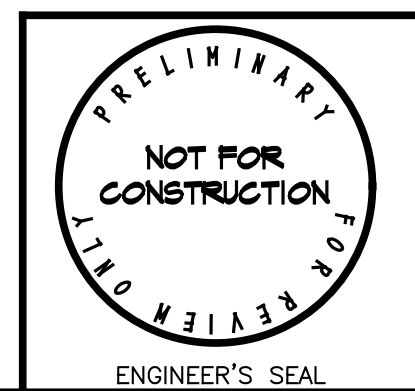


KEY PLAN
NOT TO SCALE



LEGEND

- PR, RIGHT OF WAY
- PR, LOT LINE/EASEMENT LINE
- PR, EASEMENT
- PR, BUILDING
- PR, CURB & GUTTER
- PR, RETAINING WALL
- PR, ROAD CONTROL LINE
- PR, HEAVY DUTY PAVEMENT
- PR, LIGHT DUTY PAVEMENT
- 20' PERIMETER BUFFER
- PR, SCH ACCESS EASEMENT
- PR, OPEN SPACE
- PR, IMPROVED OPEN SPACE
- PR, ACTIVE OPEN SPACE
- PR, FENCE
- PR, HANDICAP PARKING
- PR, HANDICAP RAMP
- PR, LOT NUMBER
- PR, OPEN SPACE
- PR, PARKING SPACE COUNT
- PR, LIMIT OF DISTURBANCE
- PR, TREE PROTECTION FENCE
- PR, TREELINE
- PR, F' CONTOUR
- EX, F' CONTOUR
- EX, 5' CONTOUR
- EX, 10' CONTOUR
- EX, PROPERTY LINE
- EX, RIGHT-OF-WAY
- EX, ADJACENT PROPERTY LINE
- EX, EASEMENT
- EX, 24 HOUR CHANGE FLOODPLAIN
- EX, NON-TIDAL WETLAND
- NW
- SB
- EX, STREAM BUFFER
- EX, BRIDLE
- EX, CURB
- EX, PAVEMENT/EDGE OF GUTTER
- EX, HALK
- EX, STREAMPOND
- EX, TREELINE
- EX, TREE
- SD
- EX, STORM DRAIN
- EX, SANITARY LINE
- W
- EX, WATERLINE
- EX, GAS LINE
- U&E
- EX, UNDERGROUND ELECTRIC
- O&E
- EX, OVERHEAD ELECTRIC



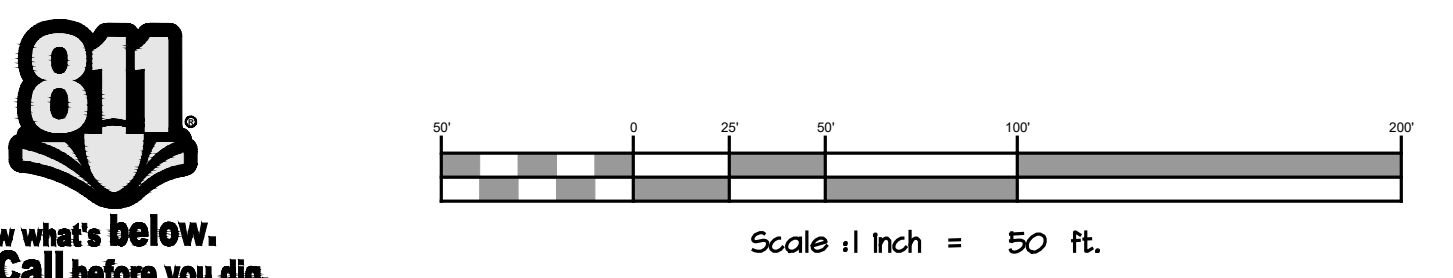
SITE PLAN - SHEET 3 OF 6
FOR
JONESVILLE ROAD
TOWN OF ROLESVILLE WAKE COUNTY, NORTH CAROLINA



MORRIS & RITCHIE ASSOCIATES OF NC, PC
ENGINEERS, ARCHITECTS, PLANNERS, SURVEYORS AND LANDSCAPE ARCHITECTS
5605 CHAPEL HILL RD, STE 112
RALEIGH, NC 27607
(984) 200-2103
LICENSE # C-4182
WWW.MRAGTA.COM
© 2021 MORRIS & RITCHIE ASSOCIATES, INC.

No.	DATE	REVISIONS

STATUS: PRELIMINARY NOT FOR CONSTRUCTION REVISION: -- SHEET: C1.3



MATCHLINE SEE SHEET C1.1

ACTIVE OPEN SPACE

PASSIVE OPEN SPACE

PROP. 25' PERIMETER BUFFER

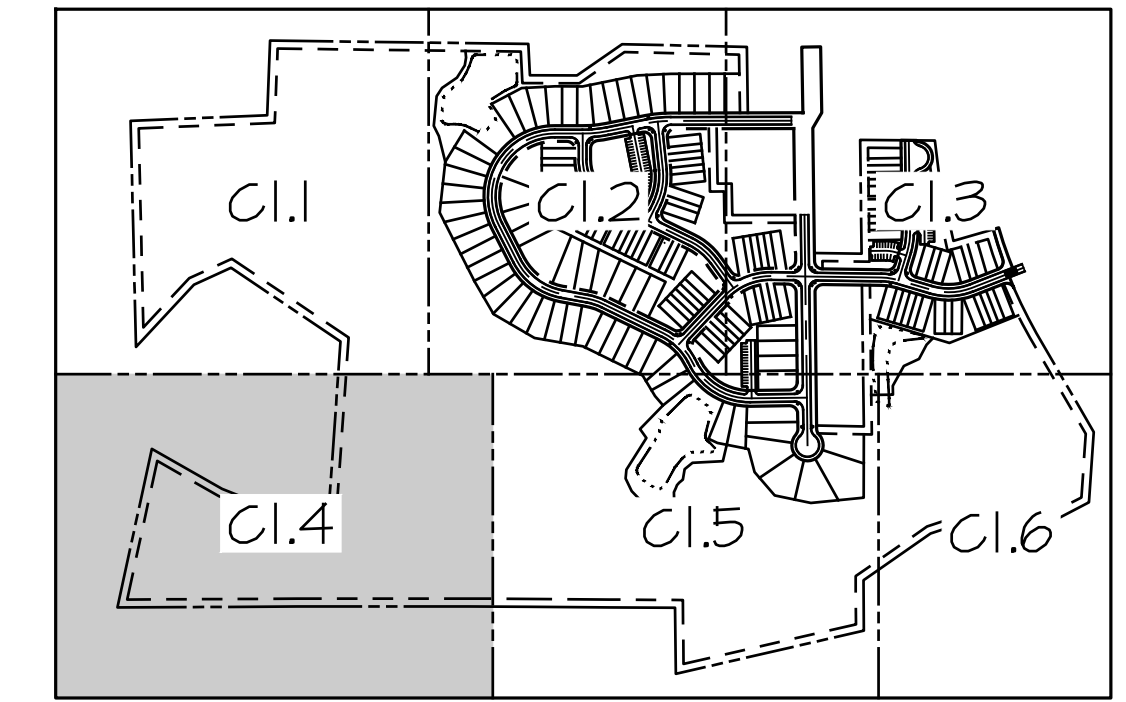
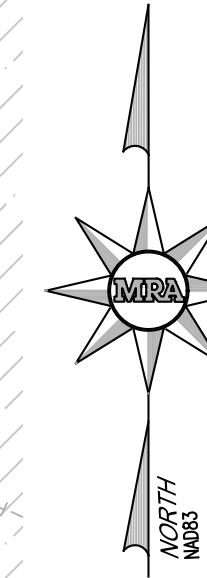
EXIST. WETLANDS (TYP.)

EXIST. SEWER (TYP.)
EXIST. SEWER EASEMENT (TYP.)

30.00'
30' FUTURE GREENWAY EASEMENT (TYP.)

PROP. 25' PERIMETER BUFFER

ADJACENT PROPERTY OWNER (TYP.)

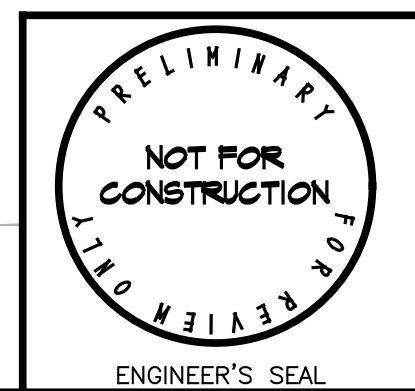
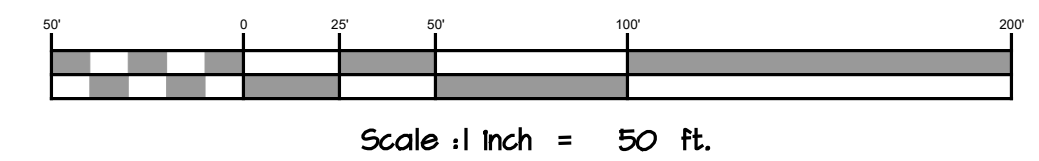


KEY PLAN
NOT TO SCALE

MATCHLINE SEE SHEET C1.5

LEGEND

- PR. RIGHT OF WAY
 - PR. LOT LINE/PARCEL LINE
 - PR. EASEMENT
 - PR. BUILDING
 - PR. CURB & GUTTER
 - PR. RETAINING WALL
 - PR. ROAD CONTROL LINE
 - PR. HEAVY DUTY PAVEMENT
 - PR. LIGHT DUTY PAVEMENT
 - 20' PERIMETER BUFFER
 - PR. SCH ACCESS EASEMENT
 - PR. OPEN SPACE
 - PR. IMPROVED OPEN SPACE
 - PR. ACTIVE OPEN SPACE
 - PR. FENCE
 - PR. HANDICAP PARKING
 - PR. HANDICAP RAMP
 - PR. LOT NUMBER
 - PR. PARKING SPACE COUNT
 - PR. OPEN SPACE
 - PR. LIMIT OF DISTURBANCE
 - PR. TREE PROTECTION FENCE
 - PR. TRELLIS
 - PR. F' CONTOUR
 - EX. F' CONTOUR
 - EX. F' CONTOUR
 - EX. F' CONTOUR
 - EX. PROPERTY LINE
 - EX. RIGHT-OF-WAY
 - EX. ADJACENT PROPERTY LINE
 - EX. EASEMENT
 - EX. 30 ANNUAL CHANCE FLOODPLAIN
 - EX. NON-TIDAL WETLAND
 - NW
 - SB
 - EX. STREAM BUFFER
 - EX. BUILDING
 - EX. GARB
 - EX. PAVEMENT/EDGE OF GUTTER
 - EX. HALK
 - EX. STREAMPOND
 - EX. TRELLIS
 - EX. TREE
 - SD
 - SD
 - SD
 - W
 - EX. SANITARY LINE
 - EX. WATERLINE
 - EX. GAS LINE
 - UG-E
 - EX. UNDERGROUND ELECTRIC
 - EX. OVERHEAD ELECTRIC
- EXISTING PROPOSED
- FIRE HYDRANT
 - WATER VALVE
 - RESIDUER
 - WATER METER
 - POWER POLE
 - LIGHT POLE
 - PROP. TRASH CAN
 - PROP. BENCH

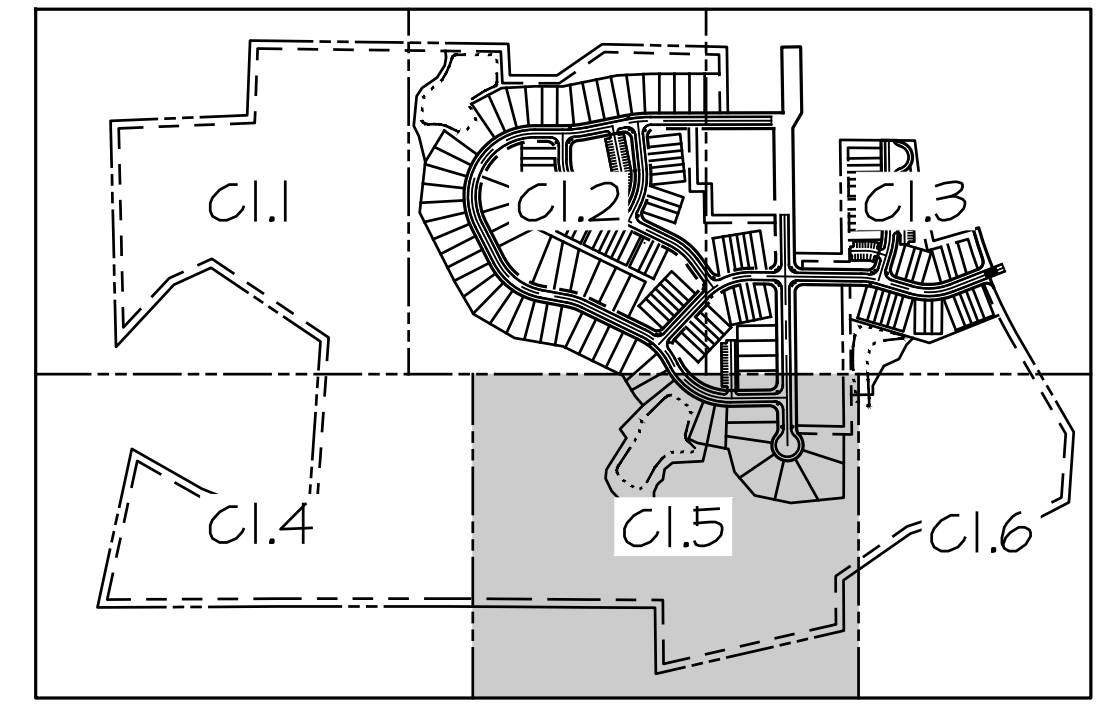
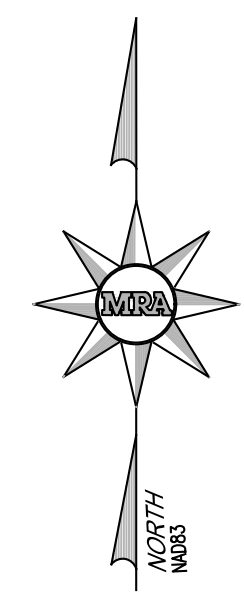
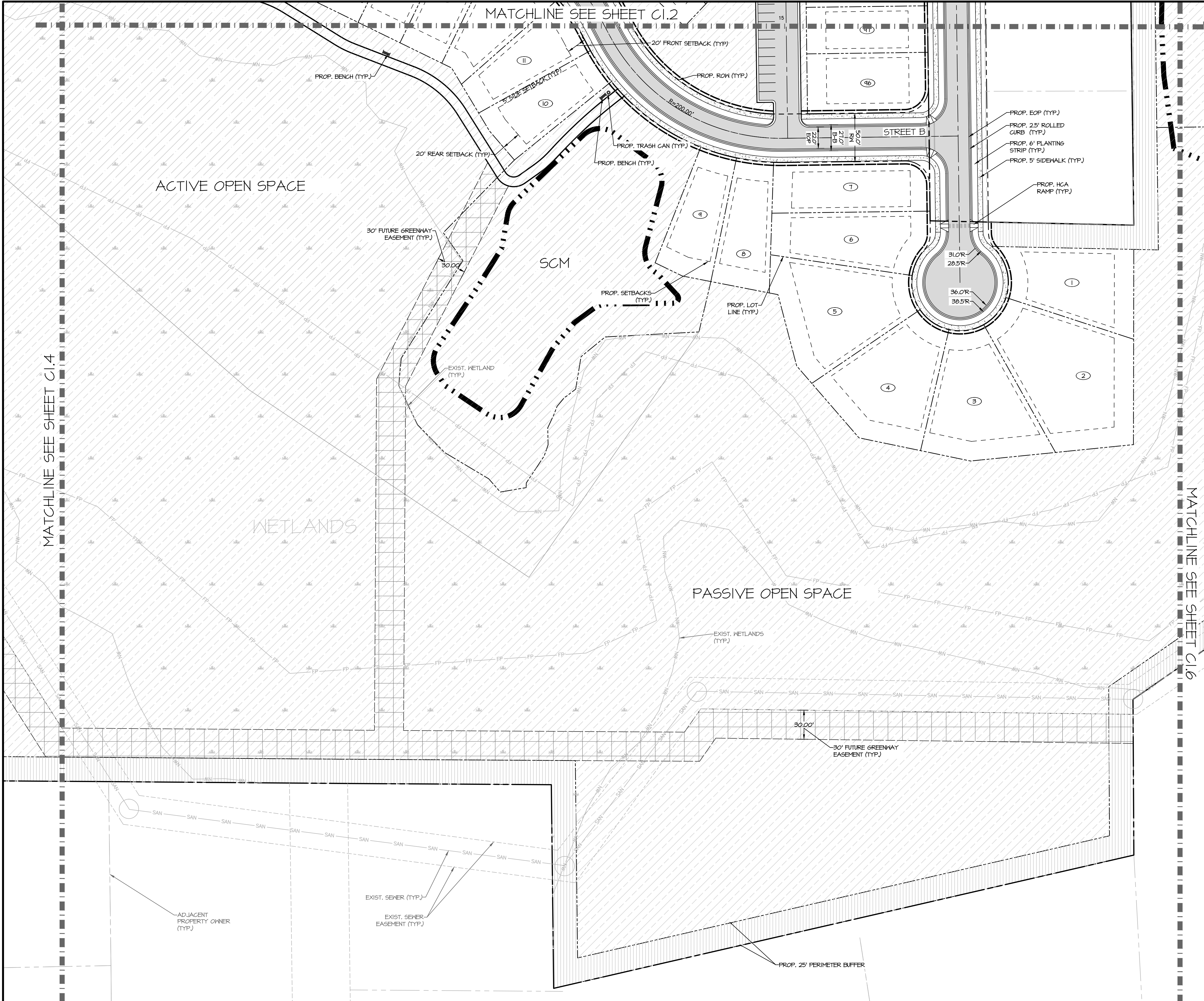


SITE PLAN - SHEET 4 OF 6
FOR
JONESVILLE ROAD
TOWN OF ROLESVILLE WAKE COUNTY, NORTH CAROLINA

MORRIS & RITCHIE ASSOCIATES OF NC, PC
ENGINEERS, ARCHITECTS, PLANNERS, SURVEYORS AND LANDSCAPE ARCHITECTS
5605 CHAPEL HILL RD. STE 112
RALEIGH, NC 27607
(984) 200-2103
LICENSE # C-4182
WWW.MRAGTA.COM
© 2021 MORRIS & RITCHIE ASSOCIATES, INC.

No.	DATE	REVISIONS

MATCHLINE SEE SHEET C1.2



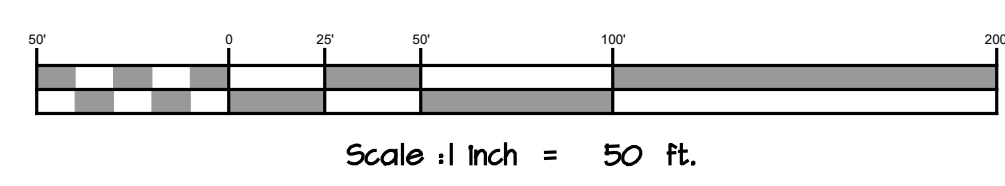
KEY PLAN
NOT TO SCALE

MATCHLINE SEE SHEET C1.4

MATCHLINE SEE SHEET C1.6

LEGEND

- PR, RIGHT OF WAY
- PR, LOT LINE/PARCEL LINE
- PR, EASEMENT
- PR, BUILDING
- PR, CURB & GUTTER
- PR, RETAINING WALL
- PR, ROAD CONTROL LINE
- PR, HEAVY DUTY PAVEMENT
- PR, LIGHT DUTY PAVEMENT
- PR, IMPROVED OPEN SPACE
- PR, SCH ACCESS EASEMENT
- PR, OPEN SPACE
- PR, IMPROVED OPEN SPACE
- PR, ACTIVE OPEN SPACE
- PR, FENCE
- PR, HANDICAP PARKING
- PR, HANDICAP RAMP
- PR, LOT NUMBER
- PR, PARKING SPACE COUNT
- PR, OPEN SPACE
- PR, LIMIT OF DISTURBANCE
- PR, TREE PROTECTION FENCE
- PR, TRESLIE
- PR, F' CONTOUR
- EX, F' CONTOUR
- EX, F' CONTOUR
- EX, F' CONTOUR
- EX, PROPERTY LINE
- EX, RIGHT-OF-WAY
- EX, ADJACENT PROPERTY LINE
- EX, EASEMENT
- EX, 24 HOURS CHANGE FLOODPLAIN
- EX, NON-TIDAL WETLAND
- NW
- SB
- EX, STREAM BUFFER
- EX, GARB
- EX, PAVEMENT/EDGE OF GUTTER
- EX, HALK
- EX, STREAMFORD
- EX, TRESLIE
- EX, TREE
- SD
- SAN
- W
- EX, SANITARY LINE
- EX, WATERLINE
- EX, GAS LINE
- UGE
- OHES
- EX, UNDERGROUND ELECTRIC
- EX, OVERHEAD ELECTRIC
- EXISTING PROPOSED
- FIRE HYDRANT
- WATER VALVE
- RESERVOIR
- WATER METER
- POWER POLE
- LIGHT POLE
- PROP. TRASH CAN
- PROP. BENCH



No.	DATE	REVISIONS

PRELIMINARY
NOT FOR
CONSTRUCTION

ENGINEER'S SEAL

SITE PLAN - SHEET 5 OF 6

FOR
JONESVILLE ROAD

TOWN OF ROLESVILLE WAKE COUNTY, NORTH CAROLINA

MORRIS & RITCHIE ASSOCIATES OF NC, PC
ENGINEERS, ARCHITECTS, PLANNERS, SURVEYORS AND LANDSCAPE ARCHITECTS
5605 CHAPEL HILL RD. STE 112
RALEIGH, NC 27607
(984) 200-2103
LICENSE # C-4182
WWW.MRAGTA.COM
© 2021 MORRIS & RITCHIE ASSOCIATES, INC.

MRA

STATUS: PRELIMINARY NOT FOR CONSTRUCTION

REVISION: --

SHEET: C1.5

JOB NO. 21790
SCALE: AS SHOWN
DATE: 6/1/2022
ENGINEER: JMK
DRAWN BY: ER/JJM
DESIGN BY: DC
REVIEW BY: JMK

